



Dresden STEM Merit Badge Clinic 2018 BOY SCOUTS and GIRL SCOUTS Program Details/Leaders Guide

Rainbow Council
Boy Scouts of America
George S. McGee Service Center
921 South State St.
Lockport, IL 60441
(815) 942-4450



Dresden Nuclear Generating Station and BSA Rainbow Council Partnership



NEW FOR 2018
CAMPING AT RSR AND
FREE TRANSPORTATION

SCOUTS AND ADULTS
CAN CHOOSE TO
ATTEND CLINIC ONLY,
OR ALL-INCLUSIVE
CAMPING WEEKEND

REGISTRATION OPENS APRIL 1st, 2018 and Closes July 31st, 2018
Register at www.rainbowcouncil.org

Dresden Generating Station, the nation’s first full-scale, privately financed nuclear power plant, invites Girl Scouts and Boy Scouts (11 to 17-year age group) to a Science, Technology, Engineering, and Mathematics (STEM) Merit Badge Clinic on August 11, 2018, featuring Nuclear Science, Engineering, Electricity, Automotive Maintenance, Fire Safety, Bird Study, Electronics, Medicine, Plumbing, Traffic Safety, Farm Mechanics, Radio, First Aid, & Finger Printing Merit Badges. **Limited class sizes, first come first served.**

All participants will be provided a tour of the Nuclear Reactor Control Room simulator. **Lunch will be provided.**

- WHAT BOY SCOUT and GIRL SCOUT MERIT BADGE CLINIC
- WHERE DRESDEN NUCLEAR POWER PLANT
6500 North Dresden Road, Morris, IL 60450
- WHEN SATURDAY, AUGUST 11, 2018 – Arrive no later than 7:30 AM
- WHO GIRL SCOUTS, BOY SCOUTS (Limited class sizes) and ADULT LEADERS
- WHY EXPERIENTIAL LEARNING in Nuclear Science, Engineering, Electricity, Automotive Maintenance, Fire Safety, Bird Study, Electronics, Medicine, Plumbing, Traffic Safety, First Aid, Radio, Farm Mechanics and Finger Printing Merit Badges.
- HOW PREREGISTER ONLINE www.rainbowcouncil.org
Click on “Calendar” at top of home page. Go to August 11th and click on ‘Dresden Merit Badge Clinic’ and then “Register.”

LIMITED CLASS SIZES

CONTACT PERSON: Bryan Schulte, Work: (815) 416-2296, 3396
Cell: (815) 405-1374

Bryan.Schulte@exeloncorp.com or bryanschulte@comcast.net

All guests and vehicles arriving at Dresden Nuclear Generating Station must follow all requirements per federal law. **NO** firearms, incendiary devices, explosives, and incapacitating devices per Title10, Code of Federal Regulation.



**Dresden STEM Merit Badge Clinic 2018
BOY SCOUTS and GIRL SCOUTS
Program Details/Leaders Guide**

Rainbow Council
Boy Scouts of America
George S. McGee Service Center
921 South State St.
Lockport, IL 60441
(815) 942-4450



Dresden Station
Scouts/Adults attending Clinic ONLY – NO Camping
REGISTRATION OPENS APRIL 1st, 2018 and Closes July 31st, 2018

Register at www.rainbowcouncil.org

Click on “Calendar” at top of home page. Go to August 11th and click on ‘Dresden Merit Badge Clinic’ and then “Register.”

August 11th, 2018

Opening Ceremony: 7:35 AM

Program: 8:00AM – 3:30PM

Lunch Provided by Dresden Station

Activity Badge Included

Cost \$5.00 per Scout

Adults – Free but must register.

**OFFICIAL FIELD UNIFORM
REQUIRED FOR CLINIC**

LIMITED CLASS SIZES

Merit Badges Offered

****See Page's 5-7 for Details****

Nuclear Science	Fire Safety
Radio	Electricity
Electronics	Medicine
Bird Study	Finger Printing
Plumbing	Engineering
Automotive Maintenance	Traffic Safety
Farm Mechanics	First Aid (Eagle Required)





Dresden STEM Merit Badge Clinic 2018
BOY SCOUTS and GIRL SCOUTS
Program Details/Leaders Guide

Rainbow Council
Boy Scouts of America
George S. McGee Service Center
921 South State St.
Lockport, IL 60441
(815) 942-4450



New for 2018 All Inclusive Camping Weekend

REGISTRATION OPENS APRIL 1st, 2018 and Closes July 31st, 2018

Register at www.rainbowcouncil.org

Click on "Calendar" at top of home page. Go to August 11th and click on 'Dresden Merit Badge Clinic' and then "Register."

August 10th – 12th, 2018

August 10th, 6:00 PM - Check in at Rainbow Scout Reservation

August 11th, Clinic 6:30 AM to 3:30 PM

Open Program after Clinic

Buses transport participants to and from Dresden Station. (First Student) - Lunch Provided by Dresden Station

August 12th, Camp Clean-up – Checkout by 11:00 AM

Activity Badge Included

Free Activity/Event T-Shirt Provided

All Food will be Provided

Cost \$45.00 per Individual

All Participants Must Register

Mandatory BSA Health Form parts A and B

"NO HEALTH FORM, NO PARTICIPATION"
NO CAMPING EQUIPMENT PROVIDED, BRING YOUR OWN EQUIPMENT
No Onsite Accommodations will be Provided

**OFFICIAL FIELD
UNIFORM REQUIRED
FOR CLINIC**



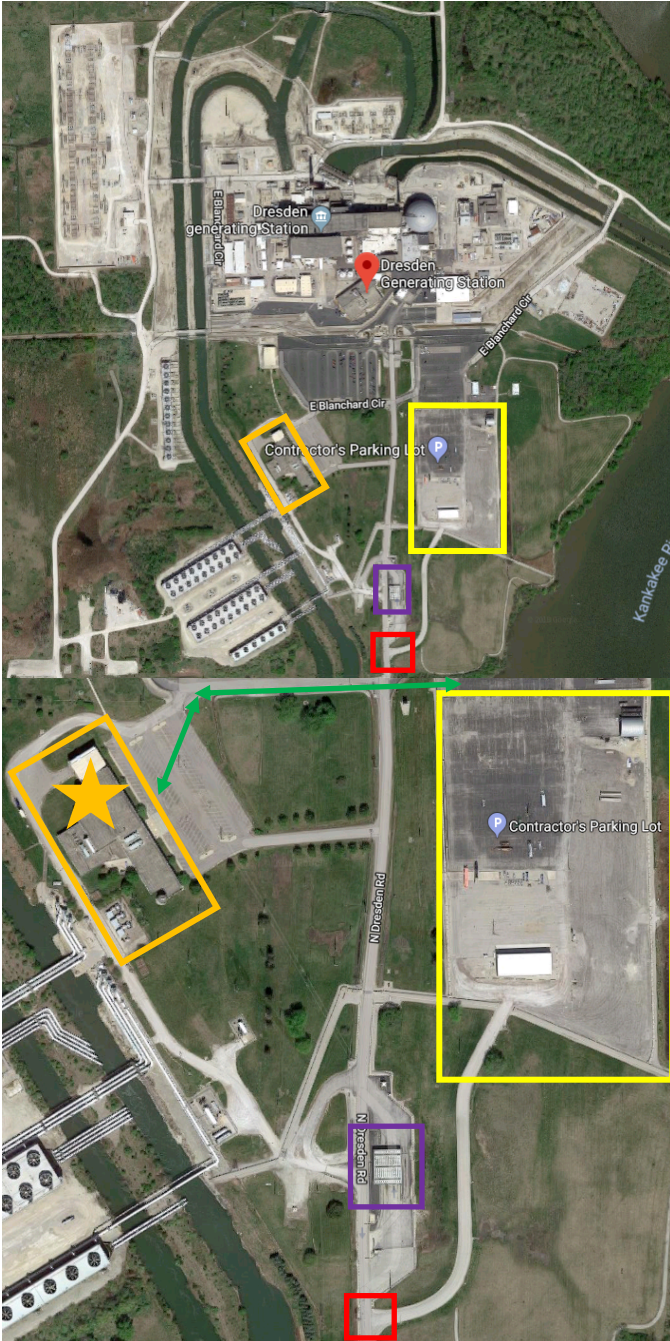
Dresden STEM Merit Badge Clinic 2018 BOY SCOUTS and GIRL SCOUTS Program Details/Leaders Guide

Rainbow Council
Boy Scouts of America
George S. McGee Service Center
921 South State St.
Lockport, IL 60441
(815) 942-4450



Dresden Station (PARKING)—for those attending clinic only

Adults and Scouts will be required to provide their own transportation to and from Dresden Station. Parking will be provided and located in the **contractor lot**. Any vehicle that approaches Dresden’s security checkpoint will be denied access. **YOU MUST PARK IN CONTRACTOR LOT AND WALK TO THE TRAINING BUILDING.**



Contractor Lot Access

As you approach station property, there is a three way stop. Turn right at stop sign and follow road to contractor lot. If you proceed straight you will be stopped at security checkpoint.

Contractor Lot (PARKING)

Three Way Stop

Security Checkpoint
(Do Not Approach)

Dresden Nuclear Power Station
6500 N. Dresden Rd.
Morris, IL 60450

★ Training Building

Walking Route



Dresden STEM Merit Badge Clinic 2018

BOY SCOUTS and GIRL SCOUTS

Program Details/Leaders Guide

Rainbow Council
 Boy Scouts of America
 George S. McGee Service Center
 921 South State St.
 Lockport, IL 60441
 (815) 942-4450



Merit Badges, Merit Badge Counselors, and Pre-Requisites

All Boy Scouts must have a Signed **BLUE CARD** from there Scoutmaster to participate for all Merit Badges (NO EXCEPTIONS) (CLASS SIZES ARE LIMITED)

Merit Badge & Counselor	Class Size	AM PM All Day	Pre-Requisites (Pre-Work) (Must be completed by Scouts prior to event. Evidence must be provided: Photo, Video, Documentation, ETC.)
Bird Study Lou Magers	5	AM PM	Pre-Work: Scoutmaster Approval and prepared/signed blue card. Pre-Work Requirements: #2 and #8. What to Bring: Bird drawing with parts labeled. Picture of a bird feeder, bird bath, or bird. habitat. Merit Badge Card and desire to learn. Requirements covered at Dresden: 1 - 1½ hour in the classroom and then spend the remainder of the time in the field looking for 20 birds.
Fire Safety Matt Kerchenfaut	25	All Day	Pre-Work: Scoutmaster Approval and prepared/signed blue card. Pre-Work Requirements: #6a – Draw home fire escape plan. Create home fire drill schedule, and conduct home fire drill. What to Bring: Your home fire-escape plan and fire drill schedule. Merit Badge Card and desire to learn. Requirements covered at Dresden: Rest of Requirements
Radio Brian McDaniel	20	All Day	Pre-Work: Scoutmaster Approval and prepared/signed blue card. Fill out your portion of the blue card in advance (name, troop, etc.) Pre-Work Requirements: #1 Explain what radio is. Then discuss the following: (1a) The differences between broadcast radio and hobby radio (1b) The differences between broadcasting and two-way communications (1c) Radio station call signs and how they are used in broadcast radio and amateur radio (1d) The phonetic alphabet and how it is used to communicate clearly. 2. Do the following: (2a) Sketch a diagram showing how radio waves travel locally and around the world. (2b) Explain how the radio stations WWV and WWVH can be used to help determine what you can expect to hear when you listen to a shortwave radio. (3c) Explain the difference between a distant(DX) and a local station. (4d) Discuss what the Federal Communications Commission (FCC) does and how it is different from the International Telecommunication Union. 8. Find out about three career opportunities in radio. Pick one and find out the education, training, and experience required for this profession. Discuss this with your counselor and explain why this profession might interest you.
First Aid Krista Schulte MSN/BSN/RN	15	AM PM	Pre-Work: Scoutmaster Approval and prepared/signed blue card. Pre-Work Requirements: #1 Satisfy your counselor that you have current knowledge of all First-aid requirements for Tenderfoot, Second Class, and First-Class ranks. (Copy, Photo, of/or Scout Book Sign-off), #2.d., Prepare a first-aid kit for your home. Display and discuss its contents with your counselor. Scout should be ready to fill out worksheet, be prepared to discuss, and participate. Scouts are expected to read First Aid Merit Badge Handbook prior to arrival.
Electricity Ray Papach	25	AM PM	Pre-Work: Scoutmaster Approval and prepared/signed blue card. Fill out your portion of the blue card in advance (name, troop, etc.) Pre-Work Requirements: #1a,c,d,e research in the merit badge book and be able to discuss in class answer the questions in advance in the work sheet.# 2 Complete a home electrical safety inspection at your home using merit badge work sheet pages 6 and 7. #3 If you are able, make a simple electromagnet at home and bring it with you to demonstrate in class. #4, 5, 6, 7 research and write down your answer on the work sheet. #6 how to reset a circuit breaker will be discussed and demonstrated in class. #8 Use the work sheet and make a diagram of a room in your home. We will also discuss in class and look at examples in the classroom. #9a Try this at home and discuss what you found. We will follow up with a discussion and examples in class. #9b Research and be ready to discuss what you found in class. home. #10 Look up definitions and be ready to discuss in class. #11 We will do this one on class and all the materials needed will be provided by Dresden. What to Bring: Completed home electrical safety inspection (req. #2) and answer to req. #7, Part 2, #1a-e, 2 will be reviewed at Dresden with the Scout, #3, 4, 5. Merit Badge Card and desire to learn. Requirements covered at Dresden: #6, 7, 8 will be done using a room in the training building, #9a, b, 10, 11. Build and run a motor from scratch and take it home.



Dresden STEM Merit Badge Clinic 2018

BOY SCOUTS and GIRL SCOUTS

Program Details/Leaders Guide

Rainbow Council
 Boy Scouts of America
 George S. McGee Service Center
 921 South State St.
 Lockport, IL 60441
 (815) 942-4450



Merit Badge & Counselor	Class Size	AM PM All Day	Pre-Requisites (Pre-Work) (Must be completed by Scouts prior to event. Evidence must be provided: Photo, Video, Documentation, ETC.)
Electronics Scott Patterson	20	AM PM	Pre-Work: Scoutmaster Approval and prepared/signed blue card. Fill out your portion of the blue card in advance (name, troop, etc.) Pre-Work Requirements: NONE
Nuclear Science Jeff Cady	25	All Day	Pre-Work: Scoutmaster Approval and prepared/signed blue card. Pre-Work Requirements: #1a, tell what radiation is. #1b, Describe radiation hazards to humans, environment, wildlife. Explain the difference between radiation exposure & contamination, discussing radiation risks from nuclear power, medical radiation, and background radiation including radon. Explain the ALARA principle & measures required by law to minimize these risks. #1c, Describe the radiation hazard symbol; explain where it should be used; Tell why & how people must use radiation or radioactive materials carefully. #2a, Tell the meaning of the following: atom, nucleus, proton, neutron, electron, quark, isotope; alpha particle, beta particle, gamma ray, X-ray; ionization, radioactivity, and radioisotope. #3b, Name three particle accelerators and describe several experiments that each accelerator performs. <u>You will be given a multiple-choice quiz on the stuff above and if you get a passing score, You will get a sign off for those requirements.</u> What to Bring: Be able to speak about the pre-requirements that were completed and have a desire to learn! And...your blue card! Requirements covered at Dresden: The rest of the requirements & cool experiments
Medicine Dr. Juli Micetich D.C.	25	AM PM	Pre-Work: Scoutmaster Approval and prepared/signed blue card. Pre-Work Requirements: A signature on paper letter, photo, email, etc from a scoutmaster or assistant scoutmaster showing proof the scout participated in activity for requirement #10. #10. Serve as a volunteer at a health-related event or facility in your community (e.g. blood drive, "health fair", blood pressure screening, etc.) approved by your counselor. What to Bring: Merit Badge Card and desire to learn. Requirements covered at Dresden: Rest of the requirements with hands on experiences.
Farm Mechanics John Cairns Jr.	8	AM PM	Pre-Work: Scoutmaster Approval and prepared/signed blue card. Fill out your portion of the blue card in advance (name, troop, etc.) Pre-Work Requirements: #1.d. Describe what a material safety data sheet (MSDS) is and tell why it is used. Obtain the MSDS for any engine coolant, oil, grease, fuel, hydraulic or transmission fluid, or other flammable or hazardous materials you use in meeting the requirements for this merit badge. Scouts should review this requirement and its components and be prepared to discuss. It is strongly recommended that Scouts bring any notes or supporting documents they may have to help show the counselor that they have prepared for discussion of these items. #2.b. Scouts should also bring their drawing required in 2B ready to share with the counselor during the discussion time in the class. #5., Visit an implement dealer. Interview the dealer technician or service manager for hints on good preventive maintenance. Ask why it is important, the costs, and what causes wear or damage. Report what you learn. Requirement 5 will NOT be covered in the class, HOWEVER, Scouts who can bring documented proof of completing any of the components of this requirement will have an opportunity to share with the counselor their accomplishments and potentially be signed off if the work meets the satisfaction of the merit badge counselor, (saying you did it is not enough, you need to bring proof), I will sign off on the requirement. #7. Find out about three career opportunities in farm mechanics. Pick one and find out the education, training, and experience required for this profession. Discuss this with your counselor and explain why this profession might interest you. Scouts should review this requirement and its components and be prepared to discuss. It is strongly recommended that Scouts bring any notes or supporting documents they may have to help show the counselor that they have prepared for completion of this requirement.



Dresden STEM Merit Badge Clinic 2018

BOY SCOUTS and GIRL SCOUTS

Program Details/Leaders Guide

Rainbow Council
 Boy Scouts of America
 George S. McGee Service Center
 921 South State St.
 Lockport, IL 60441
 (815) 942-4450



Merit Badge & Counselor	Class Size	AM PM All Day	Pre-Requisites (Pre-Work) (Must be completed by Scouts prior to event. Evidence must be provided: Photo, Video, Documentation, ETC.)
Traffic Safety Sgt. Tanya Paquette Grundy County Sherriff	15	AM	Pre-Work: Scoutmaster Approval and prepared/signed blue card. Pre-Work Requirements: None. What to Bring: Desire to learn. Requirements covered at Dresden: Rest of the requirements with hands on experience. Also, open questions and discussions about life experiences in law enforcement.
Plumbing Tom Ditchfield	15	AM PM	Pre-Work: Scoutmaster Approval and prepared/signed blue card. Pre-Work Requirements: None. What to Bring: Desire to learn. Requirements covered at Dresden: Rest of the requirements with hands on experience. Also, open questions and discussions about how important piping and safety are in a Nuclear Power plant.
Automotive Maintenance Mathew Yunkers	10	AM PM	Pre-Work: Scoutmaster Approval and prepared/signed blue card. Pre-Work Requirements: #2.h., Find out the requirements for your state's emissions and safety inspections (as applicable), including how often a vehicle needs to be inspected. #2.i., Explain the importance of registering a vehicle and find out the annual registration fee for renewing your family car's registration. #4.c., Explain why wheel alignment is important to the life of a tire. Explain caster, camber, and toe-in adjustments on wheel alignment. #4.e., Explain how to dispose of old tires in accordance with local laws and regulations. #8.a., Diagram and explain the parts of the electrical system. #9.a., Diagram the drive train and explain the different parts. #11.a., Determine the value of three different vehicles you are interested in purchasing. One must be new and one must be used; the third vehicle can be new or used. For each vehicle, find out the requirements and cost of automobile insurance to include basic liability and options for collision, comprehensive, towing, and rental car. Using the three vehicles you chose and with your merit badge counselor's assistance, complete the operation/maintenance chart provided in the merit badge pamphlet. Use this information to determine the operating cost per mile for each vehicle, and discuss what you learn with your counselor. #11.b., Choose a car cleaner and wax product for a vehicle you want to clean. Explain clear-coat paint and the precautions necessary for care. Clean the vehicle, both inside and out, and wax the exterior. Use a vinyl and rubber protectant (on vinyl tops, rubber door seals, sidewalls, etc.) and explain the importance of this protectant. #12., Find out about three career opportunities in the automotive industry. Pick one and find out the education, training, and experience required for this profession. Discuss this with your counselor and explain why this profession might interest you.
Engineering Brian Weight	25	AM PM	Pre-Work: Scoutmaster Approval and prepared/signed blue card. Pre-Work Requirements: #1: Select a manufactured item in your home (such as a toy or a appliance) and, under adult supervision and with the approval of your counselor, investigate how and why it works as it does. Find out what sore of engineering activities were needed to create it. You can find information on http://www.howstuffworks.com/ #5a. Use the systems engineering approach to make step-by-step plans for your next campout. List alternative ideas for such items as program schedule, campsite, transportation and costs. Tell why you made the choices you did and what improvements were made. #5b. Make an original design for a piece of patrol equipment. Use the systems engineering approach to help you decide how it should work and look. Draw plans for it. What to Bring: Merit Badge Card and desire to learn. Requirements covered at Dresden: Rest of requirements and some fun experiments

**OFFICIAL FIELD UNIFORM
REQUIRED FOR CLINIC**



Dresden STEM Merit Badge Clinic 2018 BOY SCOUTS and GIRL SCOUTS Program Details/Leaders Guide

Rainbow Council
Boy Scouts of America
George S. McGee Service Center
921 South State St.
Lockport, IL 60441
(815) 942-4450



General Information

Rainbow Council, Boy Scouts of America and Exelon Generation, Dresden Nuclear Power Station have been in partnership for several years providing youth the opportunity/education of Science – Technology – Engineering - Math (STEM). Dresden Station provides professional experts that can provide their experience and expertise to the STEM program. Not all merit badges are STEM but are hobbies of employees and outside professionals.

Dresden Station Unit 1 was the first privately financed nuclear power plant in the United States. Unit 1 is a Boiling Water Reactor (BWR) by General Electric and began operation in 1960 creating 197 MW of electricity. Dresden Unit 1 was retired in 1978. Unit 1 is currently at SAFSTOR (SAFe STORAge) status.

Dresden Station Units 2 and Unit 3 began operating in 1970 and are Boiling Water Reactor (BWR-3) designed by General Electric. Each unit produces 940 MW of electricity respectively, enough electricity for 1.5 million homes. Both units are designed to operate for 2 years continuously providing carbon free electricity before re-fueling. Dresden Station employs approximately 700 full time personal.

Rainbow Council is chartered by the Boy Scouts of America and serves communities in Will, Grundy, and Kankakee counties. Rainbow Council is located in Lockport, IL at the George S. McGee Service Center. Rainbow Scout Reservation is located on 700-acres near Morris, IL. The camp is open year around supporting all Boy Scout programs and maintains nationally accredited camp status.

Girl Scouts

Dresden Nuclear Power Station encourages all Girl Scouts and their adult leaders to participate. However, Dresden NPS must follow Boy Scouts of America “Guide to Advancement” for all Merit Badges. All Girl Scouts will be required to follow the BSA Merit Badge program. Girl Scouts can register for the *Clinic Only* option at www.rainbowcouncil.org. Click on “Calendar” at top of home page. Go to August 11th and click on ‘Dresden Merit Badge Clinic’ and then “Register.” Absolutely no late registration will be accepted.

Girl Scouts and Camping at Rainbow Scout Reservation

Girl Scouts are more than welcome to camp at Rainbow Scout Reservation and take full advantage of the all-inclusive weekend with *exceptions*. **All Girl Scouts must be directly related to a participating family member currently registered with Boy Scout of America (Adult or Youth) attending the event.** Unfortunately, this is required because of insurance liability requirements. Parent/Guardian is required to attend and provide supervision while at Rainbow Scout Reservation (no provisional camping will be provided). Girl Scouts will be required to fill out Boy Scouts of America health form sections A and B. No digital copies will be accepted. The health form is mandatory and participants must turn in to medical staff upon check-in. Health records will be destroyed after the event. All participants must attend the clinic. Girl Scouts will be required to register for weekend camping at www.rainbowcouncil.org. Click on “Calendar” at top of home page. Go to August 11th and click on ‘Dresden Merit Badge Clinic’ and then “Register.” No camping equipment will be provided. Absolutely no late registration will be accepted. No onsite accommodations.



Dresden STEM Merit Badge Clinic 2018 BOY SCOUTS and GIRL SCOUTS Program Details/Leaders Guide

Rainbow Council
Boy Scouts of America
George S. McGee Service Center
921 South State St.
Lockport, IL 60441
(815) 942-4450



Boy Scouts and Camping at Rainbow Scout Reservation

All registered Boy Scouts are encouraged to take advantage of this camping opportunity. There will be many program activities available for scouts attending camp. All participants must attend Merit Badge Clinic. Adults and Troop leaders are encouraged to provide supervision at camp during the entire event. Provisional camping will be provided for any registered Boy Scout, but must be selected during registration. Mandatory Boy Scouts of America health form section A and B must be turned in to medical staff upon check-in. No digital copies will be accepted. Health records will be destroyed after the event. Boy Scouts will be required to register for weekend camping at www.rainbowcouncil.org. Click on “Calendar” at top of home page. Go to August 11th and click on ‘Dresden Merit Badge Clinic’ and then “Register.” No camping equipment will be provided. Absolutely no late registration will be accepted. No onsite accommodations.

Transportation

Transportation is being provided to Dresden Station by First Student. These are 66 passenger school buses and run continuously during the morning and afternoon. Every scout must realize the importance of being prompt for arriving at designated bus stops. Merit Badge Clinic Staff and Rainbow Scout Reservation Staff will make every attempt to ensure youth are on buses for transportation. Please discuss with your scout the importance of paying attention to bus schedule and details.

General Program Description for Camp activities

The program is constantly being developed for activities at camp by Dresden Merit Badge Committee. Examples are, but not limited to: Live DJ at fire bowl, Movie and popcorn in Dining Hall Friday night, Touch a Truck experience, Rifle and Shotgun shooting, COPE course, Waterfront and fellowship of scouts. Rainbow Council and Dresden Merit Badge Clinic Committee would remind all campers that no program or food will be available at RSR during Clinic Hours between 7:35 AM – 4:30 PM. No camping equipment will be provided.

Adults/Leaders

Adults/Leaders are encouraged to attend the clinic and camping program. There is no fee for Adults/Leaders attending Clinic Only and lunch will be provided. Adults/Leaders are required to register at www.rainbowcouncil.org. Click on “Calendar” at top of home page. Go to August 11th and click on ‘Dresden Merit Badge Clinic’ and then “Register.” All adults/leaders (Guardians/Parents) attending clinic only are strongly encouraged to take Youth Protection Training at www.scouting.org. Adults/Leaders attending camp must register. The fee will be \$45, all-inclusive (food provided). Mandatory Boy Scouts of America health form section A and B must be turned in to medical staff upon check-in. Health records will be destroyed after the event. No digital copies will be accepted. Adults/Leaders are welcome to participate during camp activities but youth come first. Adults/Leaders will not receive activity badge or activity/event t-shirt. **All Adults/Leaders attending camp must take Youth Protection training, this is mandatory. Proof of YPT training will be required during check-in. This includes parents/guardians.** Adults can stay back at camp if they choose. Absolutely no late registration will be accepted. No program or food will be available at RSR during Clinic Hours between 7:35 AM – 4:30 PM. No camping equipment will be provided. No onsite accommodations.

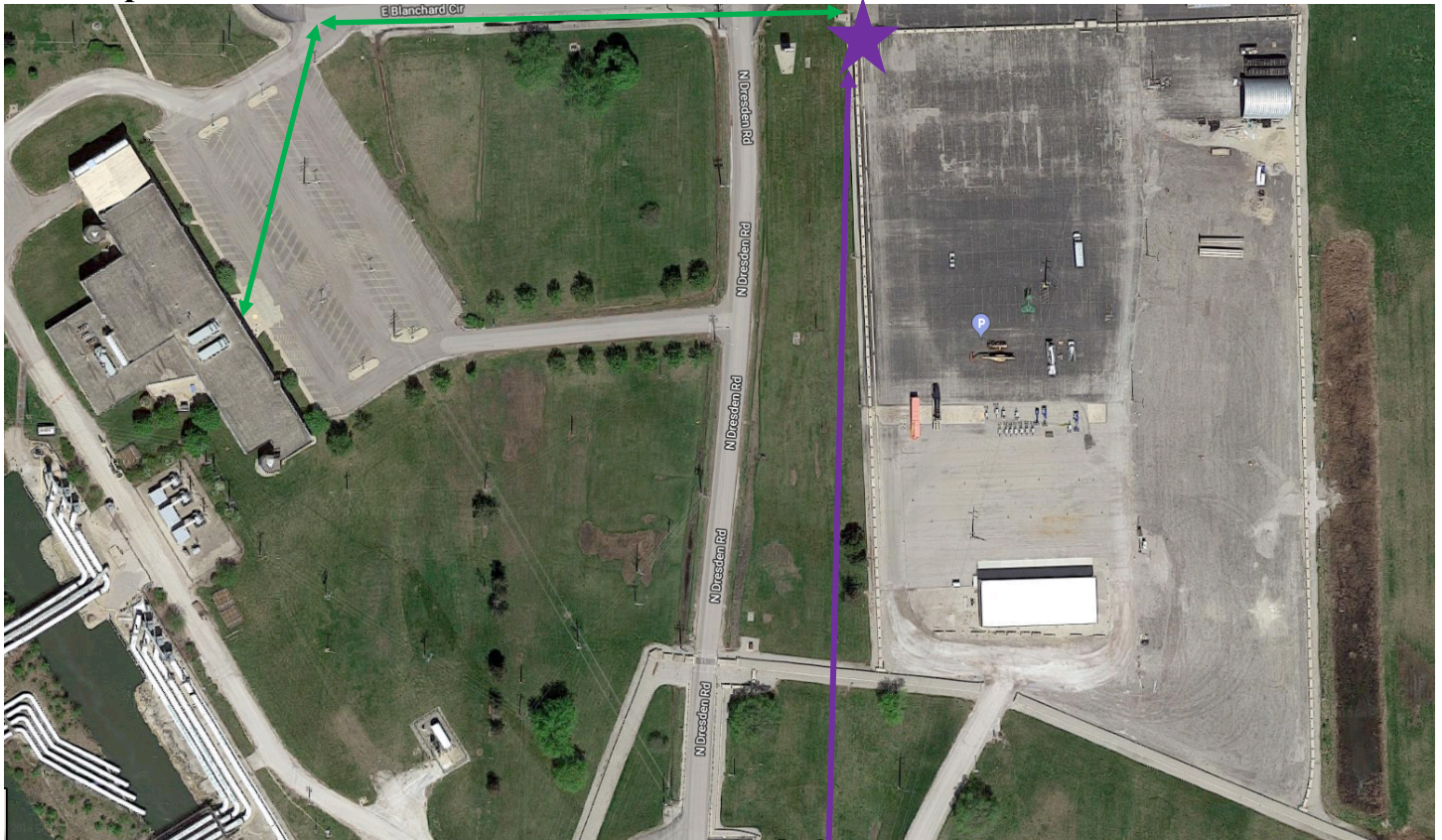


Dresden STEM Merit Badge Clinic 2018 BOY SCOUTS and GIRL SCOUTS Program Details/Leaders Guide

Rainbow Council
Boy Scouts of America
George S. McGee Service Center
921 South State St.
Lockport, IL 60441
(815) 942-4450



Bus Stop at Dresden Station



Follow Green route to walk to training building

Bus stop will be located in the Contractor lot, N.W. corner of jersey barriers. Scouts and participants will be required to walk to training center.

Dresden Nuclear Power Station
6500 N. Dresden Rd.
Morris, IL 60450

Bus Schedule- Round Trip between Rainbow Scout Reservation and Dresden Station

Morning of Saturday, August 11th, 2018
Bus departs Rainbow Council to Dresden Station
6:30 AM – 7:30 AM

Afternoon of Saturday, August 11th, 2018
Bus departs Dresden Station to Rainbow Council
3:00 PM – 4:30 PM

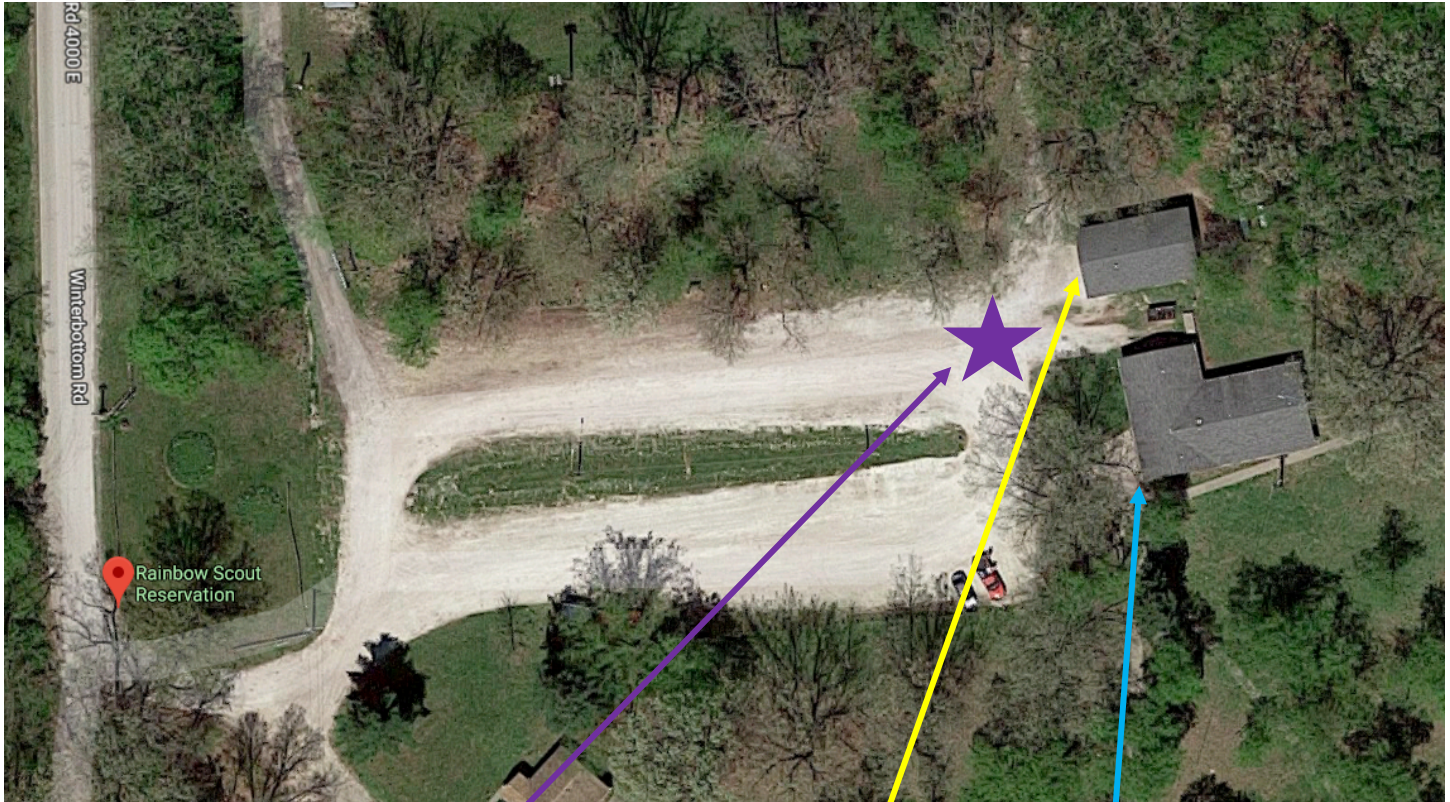


Dresden STEM Merit Badge Clinic 2018 BOY SCOUTS and GIRL SCOUTS Program Details/Leaders Guide

Rainbow Council
Boy Scouts of America
George S. McGee Service Center
921 South State St.
Lockport, IL 60441
(815) 942-4450



Bus Stop at Rainbow Scout Reservation



Bus Stop

Training Building

Camp Office

Rainbow Scout Reservation
2600 Winterbottom Rd.
Morris, IL 60450

Bus Schedule- Round Trip between Rainbow Scout Reservation and Dresden Station

Morning of Saturday, August 11th, 2018
Bus departs Rainbow Council to Dresden Station
6:30 AM – 7:30 AM

Afternoon of Saturday, August 11th, 2018
Bus departs Dresden Station to Rainbow Council
3:00 PM – 4:30 PM



Dresden STEM Merit Badge Clinic 2018 BOY SCOUTS and GIRL SCOUTS Program Details/Leaders Guide

Rainbow Council
Boy Scouts of America
George S. McGee Service Center
921 South State St.
Lockport, IL 60441
(815) 942-4450



Additional Program and Fee's

Rainbow Scout Reservation Shooting Sports

If your Scout enjoys Shooting Sports, rifle and shotgun will be offered during open program. There will be an additional fee of \$10.00 for all participants. This is optional and will be first come first serve basis. Scouts and participants must register using www.rainbowcouncil.org (Dresden Merit Badge Clinic). Click on "Calendar" at top of home page. Go to August 11th and click on 'Dresden Merit Badge Clinic' and then "Register." Wrist bands will be issued to scouts and mandatory safety brief is required. No refunds will be offered for inclement weather. RSR staff, Shooting Sports staff, and Dresden Merit Badge Committee will have discretion and determination of inclement weather. Absolutely no late registration will be accepted.



Rainbow Scout Reservation COPE Course

If your Scout likes to Climb, Repel, Zip Line, or Hi Ropes this is for them. This is optional and will be first come first serve basis. Scouts must be 13 years of age to participate. There will be an additional fee of \$10.00 for all participants. Adults and Scouts must register using www.rainbowcouncil.org (Dresden Merit Badge Clinic). Click on "Calendar" at top of home page. Go to August 11th and click on 'Dresden Merit Badge Clinic' and then "Register." All participants must fill out activity consent/waiver form on page 19 of leader's guide. **No waiver/consent form, No COPE.** There is always a possibility that not all parts of COPE course will be open based on availability of qualified supervision. Activity Consent Form/waiver will be collected and turn in during check-in. BSA health form required parts A and B. Wrist bands will be issued to scouts and mandatory safety brief is required. Inclement weather could affect COPE course and close the program. No refunds will be offered for inclement weather. RSR staff, COPE staff, and Dresden Merit Badge Committee will have discretion and determination of inclement weather. Absolutely no late registration will be accepted.





Dresden STEM Merit Badge Clinic 2018 BOY SCOUTS and GIRL SCOUTS Program Details/Leaders Guide

Rainbow Council
Boy Scouts of America
George S. McGee Service Center
921 South State St.
Lockport, IL 60441
(815) 942-4450



Waterfront

Rainbow Scout Reservation waterfront will be open for swimming during open program. This is optional and will be first come first serve basis. Swim checks are mandatory and buddy system will be enforced. Swim tags from 2018 summer camp will be accepted, Aquatics director has discretion on accepting or denying swim tags. BSA health form required parts A and B. Inclement weather could affect Waterfront and close open swimming. RSR staff, Waterfront staff, and Dresden Merit Badge Committee will have discretion and determination of inclement weather. Waterfront will only be open during program hours of 4:30 PM to 6:30 PM on Saturday.



Trading Post

Rainbow Scout Reservation Trading Post will be open during program. Snacks, Drinks, ice cream, and Scouting items will be available for purchase during this time.

Food

Special Dietary Needs

Any Adult/Leader/ or Scout that has special dietary needs, should contact RSR food coordinator for this event. Adult/Leader/ or Scout must submit written request for special dietary needs no later than July 17th, 2018. Please fill form out on page 18 of leaders guide and return to food coordinator. Scanned PDF file is preferred. Do not contact Rainbow Council directly, contact event specialist(s) on page 16 of this guide specifically the food coordinator. Make sure any correspondents have “Dresden MBC DIET” in subject field of e-mails. In some rare cases, it may be necessary for the camper/scout/adult to bring some food items, which can then be prepared by the camp staff. **Dresden NPS will not be providing special dietary needs.** No onsite accommodations.

Written requests can be sent to:

ATTN: Patty Provanve
Pattyp88@sbcglobal.net
Cell Phone: (815) 955-3900

RSR Furnished Meals

Friday Evening - Cracker Barrel
Saturday - Breakfast and Dinner
Sunday – Breakfast
Ice water will be available at all times.

Dresden Furnished Meals

Saturday – Lunch w/drink



**Dresden STEM Merit Badge Clinic 2018
BOY SCOUTS and GIRL SCOUTS
Program Details/Leaders Guide**

Rainbow Council
Boy Scouts of America
George S. McGee Service Center
921 South State St.
Lockport, IL 60441
(815) 942-4450



Dresden Merit Badge Clinic 2018 Schedule - Saturday: Rev 1

<u>Morning AM</u> August 11 th , 2018 <i>Bus Schedule</i> <i>(Arrival to Dresden) 6:30 AM – 7:30 AM</i>	<u>Afternoon PM</u> August 11 th , 2018 <i>Bus Schedule</i> <i>(Departure from Dresden) 3:00 PM – 4:30 PM</i>
7:35 AM Morning Flags Flag Ceremony Led by Waupacan Lodge Scout Oath and Scout Law	11:30 AM – 12:00 PM LUNCH Training Building Cafeteria Lunch Provided by Dresden Station
7:40 AM – 8:00 AM Classroom Orientation Scouts and Guests locate Classrooms	
8:00 AM – 11:30 AM Morning Merit Badge Session	12:00 PM – 3:30 PM Afternoon Merit Badge Sessions
Half Day AM Sessions Electricity, Electronics, Medicine, Bird Study, Plumbing, Engineering, Automotive Maintenance, Traffic Safety, Farm Mechanics, First Aid	Half Day Afternoon Sessions Electricity, Electronics, Medicine, Bird Study, Finger Printing, Plumbing, Engineering, Automotive Maintenance, Farm Mechanics, First Aid
All Day Sessions 8:00AM – 3:30 PM Half Hour Lunch Nuclear Science Fire Safety - Radio	
Control Room/Plant Simulator Tours every 20-30 minutes Security Simulator – All Day in commons area	
** Automotive Maintenance and Farm Mechanics is located on the East side of station property. ** ** Schedule subject to change. **	

**OFFICIAL SCOUT UNIFORM
IS REQUIRED FOR CLINIC**

CLASS SIZE IS LIMITED



Dresden STEM Merit Badge Clinic 2018 BOY SCOUTS and GIRL SCOUTS Program Details/Leaders Guide

Rainbow Council
Boy Scouts of America
George S. McGee Service Center
921 South State St.
Lockport, IL 60441
(815) 942-4450



Dresden Merit Badge Clinic 2018 Weekend Schedule

<u>Friday</u> August 10 th , 2018	<u>Saturday</u> August 11 th , 2018	<u>Sunday</u> August 12 th , 2018
Check-In RSR (Verify Scout Schedule) (Collect Health Forms) 6:00 pm – 10:30 pm	5:45 am Revile Wake-Up Call	7:00 am Revile Wake-Up Call
6:00 pm – 9:00 pm Camp Set-Up	6:00 am – 6:30 am Breakfast (Dining Hall)	8:00 am – 9:00 am Breakfast Dining Hall
7:00 PM – 7:30 PM Shooting Sports Safety Briefing BRTVA Training Building	6:30 am – 7:30 am Buses Arrive at RSR (Begin Transport to Dresden)	9:00 am – 9:30 am Dining Hall Clean-Up
7:00 PM – 8:00 PM Swim Checks (Buddy Required) Waterfront	7:35 am Opening Ceremony at Dresden	9:45 am – 10:00 am Chapel Service
7:30 PM – 8:00 PM COPE Safety Briefing Activity Shelter	8:00 am – 3:30 pm Dresden Merit Badge Clinic	10:00 am – 11:00 am Break Camp Scouts Dismissed
Cracker Barrel 9:00 pm – 10:00 pm Dining Hall	3:00 pm – 4:30 pm (Buses Begin Transport Back to RSR) 4:30 PM Buses are done	11:00 am – 12:00 Camp inspection Staff and Waupecan Lodge
Program Activity Movie 8:00 pm – 10:00 pm Dining Hall	4:30 pm 6:30 pm Free Time/Open Program Trading Post Open	
11:00 pm (Taps) Lights Out	6:30 pm – 7:30 pm Dinner (Dining Hall)	
	7:30 pm – 8:00 pm Dining Hall Clean-up	
	7:30pm – 9:30 pm Free Time/Open Program Waterfront Closed	
	9:00 pm – 10:30 pm Campfire - DJ Camp Fire Ring or Trading Post	
	11:00 pm (Taps) Lights Out	

** Schedule subject to change. **



Dresden STEM Merit Badge Clinic 2018 BOY SCOUTS and GIRL SCOUTS Program Details/Leaders Guide

Rainbow Council
Boy Scouts of America
George S. McGee Service Center
921 South State St.
Lockport, IL 60441
(815) 942-4450



Disclaimers

All payments are final, no refunds offered after July 31st, 2018 registration closing. Rainbow Council will determine all refunds, if any. Merit Badges are subject to change based on Counselor availability. There is no guarantee of open program(s) at scout reservation and are subject to change. Rainbow Council and Dresden Merit Badge Committee will do its best to provide world class program for all participants. No special dietary needs will be met for lunch at Dresden Station. Mandatory Health Forms Parts A and B for Youth and Adults staying at Rainbow Scout Reservation, no exceptions. **Proof of Youth Protection Training (All Adults) is required for camp, no exceptions.** Adults and Youth will be sent home if these conditions are not met. All scouts should read Merit Badge handbook for respective badge (sold at Rainbow Council Scout Shop) prior to arrival to clinic. All scouts are responsible for their Blue Card - not the Merit Badge Counselors. MeritBadge.org workbooks can be used but will not be accepted per BSA Guide to Advancement. Merit Badge Counselors and Scouts may use MeritBadge.org worksheets as an aid. All open program areas subject to inclement weather. RSR staff and Dresden Merit Badge Committee will determine at their discretion, if hazardous weather limits open program. No refunds will be offered for inclement weather. No onsite accommodations. Boy Scouts of America, Rainbow Council, and Exelon Dresden Nuclear Power Station will be using video and/or photography equipment during event. Absolutely no late registration will be accepted. Questions, please call or email us.

Contact Information

**Exelon Generation
Dresden Nuclear Power Station
Main Contact**

Bryan W. Schulte
Event Coordinator
Instrument Maintenance Department
Control System Technician
(815) 416-2296, 3396
Bryan.Schulte@exeloncorp.com

Personal
Cell Phone: (815) 405-1374
bryanschulte@comcast.net

**Exelon Generation
Dresden Nuclear Power Station**

Dean J. Walker
Assistant Coordinator
Senior Regulatory Specialist
Dresden Regulatory Assurance
(815) 416-2812
Dean.Walker@exeloncorp.com

Personal
Cell Phone: (815) 274-0955

**Rainbow Council
Boy Scouts of America**

George S McGee Service Center
921 South State St.
Lockport, IL 60441
(815) 942-4450

www.rainbowcouncil.org

Alexis Yakich
Program Executive
Alexis.Yakich@scouting.org

Kris Przewoznik
Development Director
Kris.Przewoznik@scouting.org

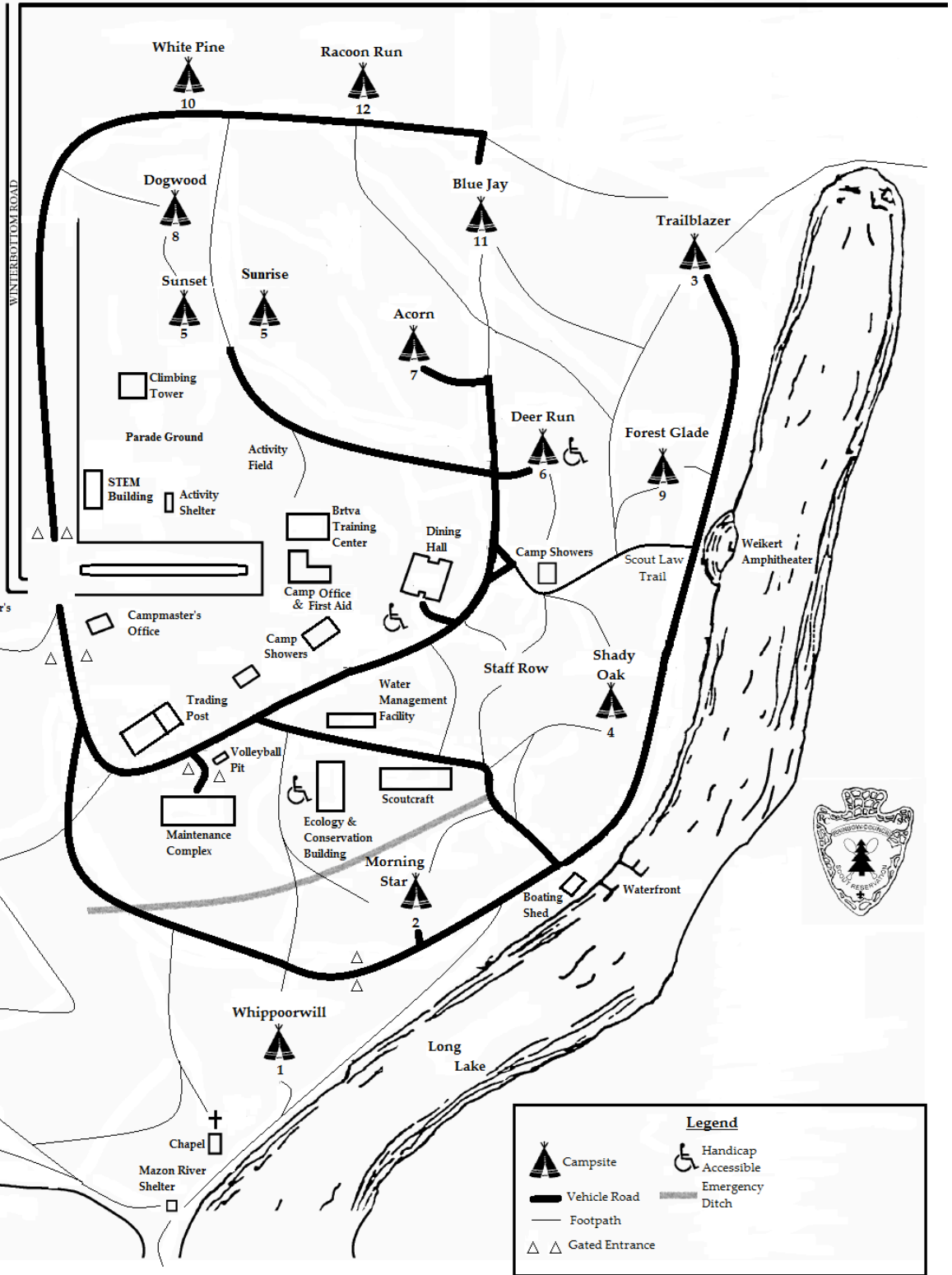
Patty Provance
Food Coordinator/Chef
Pattyp88@sbcglobal.net
Cell Phone: (815) 955-3900
Home: 815-634-8739



Dresden STEM Merit Badge Clinic 2018
BOY SCOUTS and GIRL SCOUTS
Program Details/Leaders Guide



Rainbow Council
Boy Scouts of America
George S. McGee Service Center
921 South State St.
Lockport, IL 60441
(815) 942-4450





**Dresden STEM Merit Badge Clinic 2018
BOY SCOUTS and GIRL SCOUTS
Program Details/Leaders Guide**

Rainbow Council
Boy Scouts of America
George S. McGee Service Center
921 South State St.
Lockport, IL 60441
(815) 942-4450



Dietary Needs Form - Must be turned in by July 17th, 2018 - No Exceptions

Rainbow Scout Reservation strives to serve its campers nutritious meals which meet or exceed all applicable requirements and standards. The variety of foods available at meals is usually adequate to suit the nutritional needs of most campers. In order to meet the needs of participants who have special dietary requirements due to allergies, food intolerances, or other health issues, as well as those who have religious dietary requirements, it is necessary to obtain as much information as possible prior to arrival at camp. Please be as specific regarding exact nature and severity of any allergy or intolerance. This information is necessary to determine whether the individual can simply avoid eating certain foods, whether we need to assess all ingredients in every food, or whether offending foods can or cannot be stored or served where they may contact the individual or things he or she may eat. Additionally, extra time may be required to obtain special foods such as gluten-free breads or vegetarian, vegan entrees or foods made in nut free environments. While RSR attempts to provide meals, which meet these special needs as much as possible, it is still the responsibility of the individual to avoid those foods which he or she is unable to eat. In some rare cases, it may be necessary for the camper to bring some food items, which can then be prepared by the camp staff. No onsite accommodations. **Dresden Nuclear Power Station will not be providing special Dietary Needs for Lunch on Saturday.**

Please Print Legibly

Date of Request:	
Name:	
Council:	
Troop:	
Leaders Name:	
Parents Name:	
Main Phone # Contact Person:	
Allergies (yes/no) What is Allergy(s)	Yes No Allergy:
Severity of Allergy(s)	Circle One Moderate Strong Severe

Dietary Needs:	Circle One Vegan Diabetic
Other: Please Explain	
Parent/Guardian Signature and Date:	

Please attached additional page(s) as needed. Please print legibly.



Dresden STEM Merit Badge Clinic 2018 BOY SCOUTS and GIRL SCOUTS Program Details/Leaders Guide

Rainbow Council
Boy Scouts of America
George S. McGee Service Center
921 South State St.
Lockport, IL 60441
(815) 942-4450



ACTIVITY CONSENT FORM AND APPROVAL BY PARENTS OR LEGAL GUARDIAN FORMULARIO DE CONSENTIMIENTO Y APROBACIÓN DE ACTIVIDAD POR PARTE DE LOS PADRES DE FAMILIA O TUTORES

The recommended use of this form is for the consent and approval for Cub Scouts, Boy Scouts, Varsity Scouts, Venturers, and guests to participate in a trip, expedition, or activity. It is required for use with flying plans.

El uso recomendado de este formulario es para obtener el consentimiento y aprobación para Cub Scouts, Boy Scouts, Varsity Scouts, Venturers, e invitados para participar en un viaje, expedición o actividad. Es obligatorio para su uso con planes de vuelo.

First name of participant Nombre del participante	Middle initial Inicial del segundo nombre	Last name Apellido
Birth date (month/day/year) Fecha de nacimiento (mes/día/año)		Age during activity Edad al momento de realizar la actividad

Address Domicilio		
City Ciudad	State Estado	Zip Código postal

Has approval to participate in (name of activity, orientation flight, outing trip, etc.) **COPE/CLIMBING** From _____ to _____
 Tiene la aprobación para participar en (nombre de la actividad, vuelo de orientación, excursión, etc.) De _____ a _____
(Date) (fecha) (Date) (fecha)

INFORMED CONSENT, RELEASE AGREEMENT, AND AUTHORIZATION

CONSENTIMIENTO INFORMADO, CONVENIO DE EXONERACIÓN Y AUTORIZACIÓN

I understand that participation in Scouting activities involves the risk of personal injury, including death, due to the physical, mental, and emotional challenges in the activities offered. Information about those activities may be obtained from the venue, activity coordinators, or local council. I also understand that participation in these activities is entirely voluntary and requires participants to follow instructions and abide by all applicable rules and the standards of conduct.

Entiendo que la participación en actividades Scouting implica el riesgo de lesiones personales, incluyendo la muerte, debido a los retos físicos, mentales y emocionales en las actividades que se ofrecen. Se puede obtener información sobre dichas actividades en la sede, con los coordinadores de la actividad o el concilio local. También entiendo que la participación en estas actividades es totalmente voluntaria y requiere que los participantes sigan instrucciones y acaten todas las reglas y normas de conducta pertinentes.

In case of an emergency involving my child, I understand that efforts will be made to contact me. In the event I cannot be reached, permission is hereby given to the medical provider to secure proper treatment, including hospitalization, anesthesia, surgery, or injections of medication for my child. Medical providers are authorized to disclose protected health information to the adult in charge and/or any physician or health care provider involved in providing medical care to the participant. Protected Health Information/Confidential Health Information (PHI/CHI) under the Standards for Privacy of Individually Identifiable Health Information, 45 C.F.R. §§160.103, 164.501, etc. seq., as amended from time to time, includes examination findings, test results, and treatment provided for purposes of medical evaluation of the participant, follow-up and communication with the participant's parents or guardian, and/or determination of the participant's ability to continue in the program activities.

En caso de que mi hijo se vea involucrado en una emergencia, entiendo que se realizarán esfuerzos para contactarme. En caso de que yo no pueda ser localizado, por este medio otorgo permiso al proveedor de servicios médicos para garantizar el tratamiento adecuado, incluyendo hospitalización, anestesia, cirugía o inyecciones de medicamentos para mi hijo. Los proveedores de servicios médicos están autorizados a revelar información médica protegida al adulto a cargo, médico o proveedor de servicios médicos involucrado en la prestación de atención médica para el participante. La Información de salud protegida/Información médica confidencial (PHI/CHI, por sus siglas en inglés) bajo los Estándares de privacidad de información médica individualmente identificable, 45 C.F.R. §§ 160.103, 164.501, etc., y siguientes, como se emiendan de vez en cuando, incluyen resultados de reconocimientos médicos, resultados de pruebas y el tratamiento proporcionado para fines de evaluación médica del participante, seguimiento y comunicación con los padres o tutor legal del participante, o determinación de la capacidad del participante para continuar en las actividades del programa.

With appreciation of the dangers and risks associated with programs and activities including preparations for and transportation to and from the activity, on my own behalf and/or on behalf of my child, I hereby fully and completely release and waive any and all claims for personal injury, death, or loss that may arise against the Boy Scouts of America, the local council, the activity coordinators, and all employees, volunteers, related parties, or other organizations associated with any program or activity.

Con reconocimiento de los peligros y riesgos asociados con los programas y actividades incluyendo preparativos y transportación hacia y desde la actividad, en mi propio nombre o en nombre de mi hijo, por este conducto eximo total y completamente, y renuncio a cualquiera y toda reclamación por lesiones personales, muerte o pérdidas que puedan surgir, a la organización Boy Scouts of America, el concilio local, los coordinadores de la actividad y todos los empleados, voluntarios, grupos involucrados, u otras organizaciones asociadas con cualquier programa o actividad.

NOTE: The Boy Scouts of America and local councils cannot continually monitor compliance of program participants or any limitations imposed upon them by parents or medical providers. List any restrictions imposed on a child participant in connection with programs or activities below and counsel your child to comply with those restrictions.

NOTA: La organización Boy Scouts of America y los concilios locales no pueden vigilar continuamente el cumplimiento de los participantes del programa o cualquier limitación impuesta sobre ellos por los padres o proveedores de servicios médicos. Enumerar más abajo las restricciones impuestas a un niño participante en relación con los programas o actividades.

List participant restrictions, if any: None

Restricciones del participante, si existen: Ninguna

Participant's signature Firma del participante	Date Fecha
---	---------------

Parent/guardian printed name Nombre con letra de molde del padre de familia/tutor	Parent/guardian signature Firma del padre de familia/tutor	Date Fecha
--	---	---------------

Area code and telephone number (best contact and emergency contact) Código de área y número telefónico (primer contacto y contacto de emergencia)	Email (for use in sharing more details about the trip or activity) Correo electrónico (para informar más detalles sobre el viaje o actividad)
--	--

Contact the adult leader with any questions:
Póngase en contacto con el líder adulto si es que tiene preguntas:

Name Nombre	Phone Teléfono	Email Correo electrónico
----------------	-------------------	-----------------------------

