

# **STEMBOREE**

**Guidebook for Participants**

**Smilin V Scout Ranch**

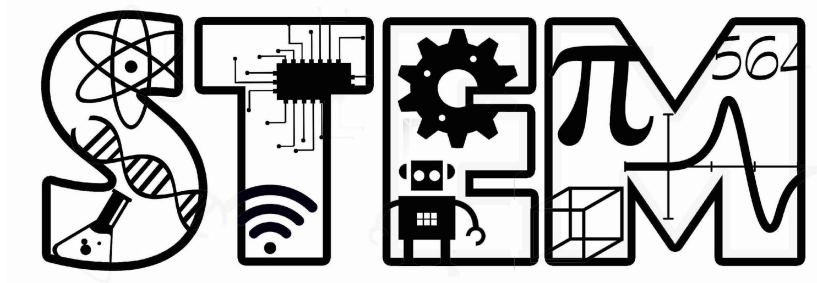
**Capitol Area Council**

**March 25-26, 2023**

Cub Scout activities, adventures, and awards with an emphasis on exploring Science, Technology, Engineering & Math

Version 1 (1/29/2023)  
Version History

Version 1 – January 29, 2023  
• Original document



## WELCOME TO STEMBOREE 2023

### About

The purpose of this weekend is to provide Cub Scouts and their families opportunities to explore scouting and have fun in a STEM-focused camp environment.

STEMboree includes age-appropriate activities for all Cub levels (Lions, Tigers, Wolves, Bears, and Webelos). Camping overnight is optional.

During STEMboree we will:

- Deliver a fun outdoor experience for the whole family.
- Foster enthusiasm in STEM in Scouting.
- Promote and follow Scouting methods, skills, procedures, and values.
- Provide scouting families an opportunity to meet and engage with other scouting families.

STEMboree is hosted by the volunteer STEM Nova Committee of the Capitol Area Council. This event is for Cub Scouts and their families (older scouts may attend by volunteering to help, but the program material is geared towards Cubs). For older youth in Scouts BSA, Venturing, and Sea Scouting who are looking to add more STEM to their program, check out our combined STEM Adventure and Conservation Award Weekend, October 13--15, 2023 at Lost Pines.



*"STEM is part of an initiative the Boy Scouts of America has taken on to encourage the natural curiosity of youth members and their sense of wonder about these fields through existing programs."*

<http://www.scouting.org/stem/AboutSTEM.aspx>

CAC Staff Contact: Jessica Snider, Assistant Director of Support Services  
Office: (512) 617-8651, Cell: (512) 632-9395, [jessica.snider@scouting.org](mailto:jessica.snider@scouting.org)

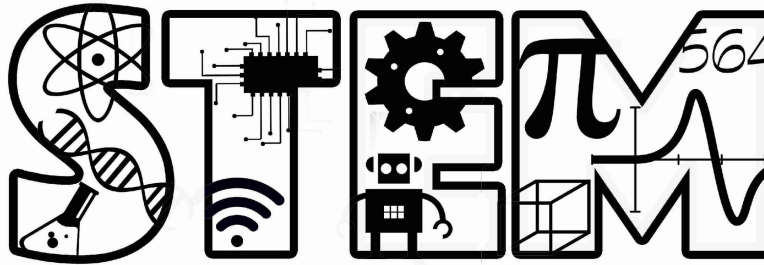
Volunteer Contact: Dr. Tim Urban, STEM Nova Committee Chair  
(512) 627-0472, [drtimurban@gmail.com](mailto:drtimurban@gmail.com)

Capitol Area Council STEM Webpage  
<https://www.bsacac.org/activities/stem/>  
<https://bsastemnova.org/>

## **Table of Contents**

<b>Overview of STEMboree</b>	<b>6</b>
<b>Weekend Schedule</b>	<b>7</b>
<b>Class Schedule</b>	<b>8</b>
<b>Class Descriptions</b>	<b>9</b>
Free-time STEM Activities (during class times and at designated free time)	9
Cub Elective Adventures (1 hour each class)	9
Cub Shooting Sports (1 hour each class and designated free time)	9
Nova Award classes (2 hours - Cubs must sign up for both parts)	10
Group Instruction – Being Respectful and Engaged	11
<b>Registration</b>	<b>12</b>
<b>Youth Protection</b>	<b>13</b>
<b>Adult Participation</b>	<b>13</b>
<b>Location: Smilin V</b>	<b>13</b>
<b>Arrival</b>	<b>14</b>
Check-in	14
Little STEM Library	14
Medical reminders	14
<b>Around Camp</b>	<b>16</b>
Restrooms	16
Trash	16
Food	16
Gear	16
Utilities	17
Personal Electronics Policy	17
<b>Departure</b>	<b>18</b>
Electronic Completion Reports	18
<b>Camp Rules &amp; Notes</b>	<b>19</b>
Safe Scouting	19
Vehicles	19
Conduct Policy	19

Outdoor Code	19
Visitors	20
Arrivals and Departures	20
Scout Volunteers	20
Uniform	20
Appropriate Clothing and Footwear	20
STEM Gear	20
Lost and Found	21
Camp Staff Areas	21
Health and Safety	21
Medications	21
Not Allowed	21
<b>Contact Capitol Area Council</b>	<b>22</b>
STEMboree - Primary Staff Contact	22
STEMboree - Primary Volunteer Contact	22
CAC Main Reception Desk	22



## Overview of STEMBoree

- Smilin V Scout Ranch, Liberty Hill. See [council](#) for directions and maps.
- Activities all day Saturday
- Check-in Saturday begins at 8:30 AM
- Class rotations begin at 10:00 AM
- Saturday evening activities and overnight camping to Sunday is optional
  
- Cubs may attend STEMBoree with their families or dens or packs.
- Each youth must have a designated responsible adult on site.
- Lions, Tigers, and any non-registered siblings must have a Parent/Guardian with them at all times.
- Cub families are responsible for their own food (Saturday lunch) and if staying for evening activities (Saturday dinner) and if camping overnight (Sunday breakfast).
  
- Registration link: <https://scoutingevent.com/564-67460>
- Registration fees: Cubs signing up for any of the classes are \$20. Adults and siblings are \$10.
- Cubs may sign up for up to 4 class periods. It is not necessary to sign up for all 4 class periods, as there will be many “STEM Free-Time Activities” to occupy Cubs and siblings throughout the day.
- Cubs sign up for activities including Elective Adventures, Nova Awards, Shooting Sports, and “STEM Free-Time Activities”. You will choose these classes on the online registration form. After registering, you may change classes online or at check-in as long as the class has space.
  
- Checklist of things to bring:
  - Medical form A&B for every participant
  - Refillable water bottle for every participant.
  - Food: lunch, optional snacks & dinner & breakfast
  - Camp chair
  - Book(s) to exchange with the Little STEM Library

### Note

- Check-in and check-out are at the Large Pavilion.
- If you leave camp for any reason, even if you will be returning, you must check out with staff at the Large Pavillion.
- No vehicles are allowed in camp. Bring a wagon or backpack to transport your gear from the parking lot.
- Potable water and restroom facilities are available.
- There is no dumpster at Smilin V. Please plan to pack out all your trash.
- If you need electricity overnight for health reasons (CPAP), please contact a CAC Staff member as soon as possible to make arrangements.

## Weekend Schedule

Saturday, March 25		
8:30 AM	Check-in begins	Large Pavilion
8:30 - 10:00 AM	STEM free-time activities	Large Pavilion
<b>10:00 - 10:45 AM</b>	<b>Class Session 1</b>	Around camp
<b>11:00 - 11:45 AM</b>	<b>Class Session 2</b>	Around camp
12:00 - 1:00 PM	Lunch on your own	Campsite
1:00 - 1:45 PM	STEM free-time activities/ Additional range time	Large Pavilion/ Ranges
<b>2:00 - 2:45 PM</b>	<b>Class Session 3</b>	Around camp
<b>3:00 - 3:45 PM</b>	<b>Class Session 4</b>	Around camp
4:00 - 5:30 PM	Free time – Set up camp STEM free-time activities Additional range time	Campsite/ Large Pavillion/ Ranges
5:30 - 6:30 PM	Dinner on your own	Campsite
6:30 - 7:30 PM	STEM free-time activities	Large Pavillion
7:30 PM	Flags/Special events	Flagpoles
8:00 PM	Campfire and Night Hike	Fire ring
8:30 - 10:00 PM	Star Party	Telescope area
10:00 PM	Lights Out, Quiet Time to 6:30 AM	
Sunday, March 27		
7:30-9:00 AM	Breakfast on your own, Pack up camp and clean up	Campsite
9:00 AM	Morning events/Announcements	Large Pavillion
9:30 AM - 10:30 AM	Check out and Depart	Large Pavilion

The STEMboree schedule may change due to weather, construction, or other camp considerations. Updates will be provided at the event.

## Class Schedule

Registered Cubs (\$20) may select up to 4 class periods appropriate for their age group. Not all sessions need to be filled with a class: "Free-time STEM Activities" may be chosen for one or more hours and will be available most of the day. See the following pages for Class Descriptions.

- Some classes are rank specific. Check the name in the list.
- Nova Awards are only available to Wolf, Bear and Webelos.
- Shooting sports are only available to Tiger, Wolf, Bear, and Webelos.
- Nova Award classes have Part 1 and Part 2. Cubs need to sign up for both parts to complete that activity.
- Lion and Tiger Adventure classes have Part 1 and Part 2. Cubs may sign up for both parts to get the most out of that activity, but it is not required.

<b>Class Session 1 10:00-10:45 AM</b>	<b>Class Session 2 11:00-11:45 PM</b>	<b>Class Session 3 2:00-2:45 PM</b>	<b>Class Session 4 3:00-3:45 PM</b>
Free-time STEM Activities at the Large Pavillion			
Free-time STEM Activities	Free-time STEM Activities	Free-time STEM Activities	Free-time STEM Activities
Cub Adventures			
		Webelos - Earth Rocks	Webelos - Into the Woods
Bear Adventure - Super Science	Bear Adventure - Forensics		
Wolf - Adventures in Coins & Code of the Wolf	Wolf Adventure - Air of the Wolf		
		Tiger Adventures part 1	Tiger Adventures part 2
Lion Adventures part 1	Lion Adventures part 2		
Shooting sports			
Tiger BB Gun	Webelos BB Gun	Bear BB Gun	Wolf BB Gun
Webelos Archery	Tiger Archery	Wolf Archery	Bear Archery
STEM Nova Awards			
Nova Down & Dirty part 1	Nova Down & Dirty part 2	Nova Down & Dirty part 1	Nova Down & Dirty part 2
Nova Out of This World part 1	Nova Out of This World part 2	Nova Out of This World part 1	Nova Out of This World part 2
Nova Up and Away part 1	Nova Up and Away part 2	Nova Up and Away part 1	Nova Up and Away part 2



## **Class Descriptions**

### Free-time STEM Activities (during class times and at designated free time)

Let your scout run around to enjoy the various STEM stations set up at Smilin V. Activities include (subject to change): rockets, chemistry experiments, egg drop contest, chess and other games, mammal studies, obstacle course, STEM hike, STEM story time, branding, sewing, neckerchief silk screening, STEM movies, open archery and bb gun shooting time, and the Little STEM Library and free book exchange.

### Cub Elective Adventures (1 hour each class)

- Webelos:
  - Earth Rocks – Geology (rocks and minerals)
  - Into the Woods – Identify trees and plants, and discuss how animals and humans use them.
- Bear:
  - Forensics - Learn how crimes are solved with fingerprints and chromatography
  - Super Science - Electricity, buoyancy and more.
- Wolf:
  - Adventures in Coins & Code of the Wolf - Coins, codes, and math-related activities.
  - Air of the Wolf - From musical instruments to aircraft.
- Tiger:
  - Stories in Shapes – Art and tangrams
  - Curiosity, Intrigue, and Magical Mysteries – Magic tricks and science demonstrations
  - Sky is the Limit – Activities about astronomy (completed with an observation of the night sky)
- Lion:
  - Build it Up, Knock it Down – Structures and emotions
  - On Your Mark – Games, obstacle course, and box derby relay
  - Rumble in the Jungle – Animal games, rules, and animal sounds
  - Gizmos and Gadgets – Learn about motion and force, and make something useful
  - Plus astronomy activities related to the observation of the night sky

### Cub Shooting Sports (1 hour each class and designated free time)

- BB Gun or Archery (for Tiger, Wolf, Bear, Webelos only).  
Cubs can work on earning their rank Level 1 patch and Level 2 pin.  
[https://www.scouting.org/wp-content/uploads/2018/04/510-320\\_WEB.pdf](https://www.scouting.org/wp-content/uploads/2018/04/510-320_WEB.pdf)

Nova Award classes (2 hours - Cubs must sign up for both parts)

For Wolf, Bear, Webelos only. Click each title for the link to the award requirements. Classes cover all requirements except #1 read/watch for an hour. Take advantage of the Little STEM Library to relax with a book and complete your Nova reading requirements.

- [Down and Dirty](#) - Earth science, geology, fossils, volcanoes, weather, ecosystems
- [Out of This World](#) - Space exploration, planets, astronomy
- [Up and Away](#) - Air flow and fluid dynamics, parachutes, airfoils

## Group Instruction – Being Respectful and Engaged Setting Expectations in Advance

A purpose of STEMboree is for the Cubs to have fun learning STEM. Our STEM instructors will “Do Their Best” to make sure all Cubs are engaged and have the opportunity to complete the requirements.

Some classes are rank-specific, but there is no rank or age limit to attend the weekend event; however, it is imperative that all attendees be attentive and engaged in the interactive environment that is created by the instructors, and to not disturb others in the class.

Cubs have the *opportunity* to complete most class requirements at STEMboree. However, not all awards may be completed at camp, either by limitations of the camp environment or by the Cub’s ability or willingness to do or show or demonstrate or complete or participate in the activity.

From the BSA:

- *“Simply...listening during a group instruction session does not constitute completing a requirement.”*
- *“It is unacceptable to award badges on the basis of sitting in classrooms watching demonstrations, or remaining silent during discussions.”*
- *“[Signing off requirements] in such a manner takes away from the Scout’s opportunity for learning and personal growth...”*

Our instructors will strive to make STEMboree fun and engaging. We ask that all adults attending STEMboree help the Cubs to understand and remain engaged. Thank you for your cooperation!

## Registration

Register at this link: <https://scoutingevent.com/564-46062>

Registration fees for 2022 are \$20/Cub and \$10/adult or sibling.

Registration includes entrance to Smilin V, campsites and facilities, classes, materials and activities, and a commemorative STEMboree patch.

Classes without a minimum number of scouts signed up one week before STEMboree may be canceled and youth will be offered an alternate class. Participants will be notified as soon as possible of any class changes. In the case that a class is canceled due to unforeseen circumstances, Cubs will be moved into alternate instruction areas as available.

For the Council's refund policy please visit <https://www.bsacac.org/refund-policy/>.

Class Changes: There is an opportunity during check-in on Saturday to make changes in Cubs' schedules if the class is available.

Sign up individually (family) or as a den or pack.

Because this is a Council event, packs do not need a Baloo-trained leader.

For groups of Cubs, two-deep leadership is required, and a female adult is required for any units bringing female youth.

Cubs and units from other councils are very welcome to participate in the Capitol Area Council STEMboree!

Please reach out to our staff if you have any questions about our council and our events.

## **Youth Protection**

All adults must have unexpired Youth Protection Training.

If you have female youth attending, per BSA youth protection policy, there must be a registered female adult leader 21 years of age or over in every unit serving females.

This camp relies 100% upon adult volunteers and so we ask that all adults help by monitoring camp and scouts. If you see something that needs help or attention, please let us know.

## **Adult Participation**

Adults with a talent or interest in helping with a specific class or area are asked to please volunteer with the Primary Event Contacts as soon as possible so that we can assign class instructors and assistants.

Adults are reminded to follow youth protection training guidelines at all times. Two-deep leadership is a fundamental tenet of the policies of the BSA.

## **Location: Smilin V**

STEMboree is held at the Smilin V Scout Ranch, 250 County Rd 286 Spur, Liberty Hill, TX 78642. Smilin V is comprised of 91 acres of improved Hill Country ranch land.

Campsites that will be available for STEMboree are determined that weekend by the ranger and staff and may depend upon weather, logistics, camp repairs, and other factors. Locations are first come, first served. Large dens or packs (having 8 or more tents) are asked to please notify STEMboree staff ASAP so that an area may be reserved for your group.

For directions, a camp map, and additional information about Smilin V, please visit <https://www.bsacac.org/activities/camping/smilin-v/>.

## **Arrival**

Upon arrival at Smilin V, you will be directed to park in the main parking lot. The speed limit is 10 MPH everywhere inside Smilin V.

After parking, participants should gather their paperwork and walk to check-in. Follow the signs to the Large Pavillion.

If you are camping overnight, you do not need to bring your gear at this time. There will be time for you to set up later.

Check-in begins Saturday at 8:30 AM at the Large Pavillion. Late check-in and check-out are at the same location.

### Check-in

- Verify your (family/den/pack) head count. Is anybody registered but not attending? Please let us know so that we can open up classes for others.
- Turn in a copy of parts A & B of the Annual Health and Medical Release (AHMR) form for everyone for review by the health officer.
- Everyone gets a wristband to wear that shows that you belong at camp.
- Scouts get a nametag and class schedule.
- Activities begin as soon as you arrive and classes begin at 10:00 AM.
- If you are camping, during free time you may carry your gear from the parking lot to your campsite and set up camp.

There will be a map of Smilin V at check-in with the locations of all the events marked.

Any persons entering camp must check in with Staff at the Large Pavillion. Likewise, every participant leaving camp for any reason must log their departure with Staff.

### Little STEM Library

Bring a gently used STEM book and take another book home with you! Borrow as many as you wish to read during camp. Examples include books about volcanoes, sharks, bugs, trucks, castles, animals, and cool science experiments.

### Medical reminders

Please bring a COPY of your AHMR medical forms. Camp will keep Part A. Do NOT bring your original. Medical forms not picked up at the conclusion of the weekend will be destroyed.

All injuries should be referred to camp medical staff. Current medical forms (Parts A&B) are required for all attendees.

[http://www.scouting.org/filestore/HealthSafety/pdf/680-001\\_AB.pdf](http://www.scouting.org/filestore/HealthSafety/pdf/680-001_AB.pdf)

## **Around Camp**

### Restrooms

The bathhouse at Smilin V has 6 single-stall restrooms with shower facilities. Follow attire, footwear, and youth protection training policies at all times. Only wear shower shoes in the shower – always wear closed-toed shoes to and from the facilities.

### Trash

There is no dumpster at Smilin V. Please pack out your trash.

Please help keep Smilin V clean and pick up trash anywhere you see it.

### Food

Cub families are responsible for their own food (Saturday lunch and any snacks) and if staying for evening activities (Saturday dinner) and if camping overnight (Sunday breakfast).

There is no dumpster at Smilin V. We ask that you pack out as much of your trash as you can.

Do not leave food unattended: Smilin V has many stinging, biting, and clever critters that adore smellables – please keep food contained.

If you need to leave camp to get food - or for any reason - you must check out at the Large Pavillion and check-in again when you return.

Propane grills are the best option for cooking. Ground fires are not permitted in campsites. Participants will be notified if there is a burn ban, in which case charcoal fires will be prohibited. If you have any questions about bringing any items, please contact staff beforehand. Thank you for your cooperation.

### Gear

Dress for the weather. Bring a water bottle. Bring a camp chair.

Bring non-aerosol bug repellent and sunscreen. Aerosols harm the environment, deteriorate tent waterproofing, and are fire hazards. Look for sunscreen without chemicals that harm animal life: <https://oceanservice.noaa.gov/news/sunscreen-corals.html>

There is no camp store. Convenience stores in Liberty Hill are about 5 miles away. If you need to leave camp to get supplies - or for any reason - you must



check out at the Large Pavillion and check-in again when you return. A Scout is helpful and thrifty: most items you can share, make out of duct tape, or live without.

### Utilities

Smilin V has potable water. Campsites have no electricity. Camp staff has access to electricity for emergencies. For any health issues needing electricity (CPAP), please contact Staff as soon as possible.

### Personal Electronics Policy

Cell coverage is very limited. Enjoy the outdoors and put your phone away!

Some classes may use electronics as tools for their STEM classes. Scouts are asked not to use devices during class unless instructed.

We ask that all Scouts and Scouters refrain from using devices for any non-Scouting related activities. Playing video games, watching YouTube, TV, or listening to the radio disturb others and are not appropriate at camp (unless done in a STEM class). There are plenty of activities at STEMBoree and acres of land at Smilin V to explore to engage youth and adults.

## Departure

Check out at the Large Pavillion.

You may depart camp at any time on Saturday or Sunday after checking out with Staff. Please make sure your campsite is clean.

You will get your STEMBoree patches and may pick up medical forms when you check out. Any medical forms left at camp will be shredded for privacy protection.

Drive safely and be careful going home!

### Electronic Completion Reports

Congratulations Cubs! Here is your award...

There are no paper reports. Instead, each scout will receive an Electronic Completion Report accessible through the *Black Pug* registration system that lists the Cub requirements that they completed.

This report is a record of a Scout's progress in the pursuit of completing Adventures and Nova awards. The instructor will call roll at the beginning of each class. After the class, the instructor will turn in the class list and requirements actually and personally completed by each scout. See also Group Instruction Expectations.

The electronic completion report should be turned in to your Den Leader, Cubmaster, or Advancement Chair of your unit for proper verification and recording of your achievements during STEMBoree.

## Camp Rules & Notes

### Safe Scouting

All Scouts must be at camp with a parent, guardian, or adult who is responsible for them.

All BSA regulations that apply to your unit's regular campouts apply to STEMboree as well (annual health A & B forms, youth protection training for adults, etc.). <http://www.scouting.org/Training/YouthProtection.aspx>

Follow the Guide to Safe Scouting: <https://www.scouting.org/health-and-safety/gss>

### Vehicles

Park in the main parking lot north of the entrance. *No vehicles are allowed beyond this point or in the campsites.* If you require special assistance, please contact Staff in advance. The walk from the parking lot is not far. These rules are in place for Scout safety. Speed Limit is 10 MPH everywhere in camp.

### Conduct Policy

The conduct and discipline of the youth in your pack are your responsibility. Please be vigilant in making sure your scouts' behavior is consistent with the Scout Oath and Law. This is a camp policy that we have found to be of mutual benefit.

Your campsite is your home. Entering or loitering around another campsite without that group's permission invites problems.

Lights out and quiet time is from 10:00 PM to 6:00 AM. All campers are expected to be in their own campsites during that time. If coming back late from the Star Party, please be extra quiet and do not disturb others.

### Outdoor Code

Please abide by the outdoor code while at camp. Do not cut or mar trees. Help your Scouts know the importance of caring for trees and all property.

Capitol Area Council prohibits pets, hammocks, and drones on all our properties including Smilin V Scout Ranch. We appreciate your cooperation.

Ground fires are not permitted in campsites during STEMboree.

## Visitors

Visitors are not allowed beyond the parking lot for pickup/dropoff. All youth and adults on site must be registered for the event.

## Arrivals and Departures

Staff must maintain an accurate head count in case of emergency at all times.

All participants **MUST** check in at the Large Pavilion upon arrival.

All participants **MUST** check out at the Large Pavillion before departing for any reason, including if they are returning.

## Scout Volunteers

Volunteers will be asked to help with the STEM Service on Sunday. If your Scouts wish to participate in the service, please contact staff at check-in. All are welcome to attend.

## Uniform

While wearing the official field uniform is always appropriate, it is not required for STEMboree. If desired, it is recommended for flags, Sunday service, and when traveling to and from camp.

## Appropriate Clothing and Footwear

Any Scout-appropriate clothing is acceptable. Not permitted are caps, t-shirts, etc., with words or pictures not representing the best spirit of the Scout Oath and Law.

For safety reasons, closed shoes (sneakers or boots) are to be worn at all times (except in your tent or in the shower). No Crocs or hiking sandals.

A shirt *with sleeves* must be worn at all times.

## STEM Gear

STEM t-shirts will be available while supplies last for \$15. The design is shown and the shirts are blue (not black as pictured). Vintage STEM shirts, mugs, patches, and other items will also be available for purchase.



### Lost and Found

Lost and found will be kept at the Large Pavilion. Please take only what belongs to you from the lost and found area. Unclaimed items will be kept at the Fickett Center for 30 days before being donated to a charitable organization.

### Camp Staff Areas

Participants are not allowed in the camp staff areas at any time. We ask adults to help enforce this policy.

### Health and Safety

The Health and Safety of the Scouts and Scouters is a primary consideration at Smilin V. We provide a Health Officer trained to handle minor accidents or illness. They will generally be at the Large Pavilion.

### Medications

Medications to be taken at camp must be controlled by the parent/guardian or unit leader. All medications must be in the proper original containers labeled with the patient's name, medication name and written dosage directions. Adults may dispense medications to scouts but must never allow medication to be in the possession of a scout. The only exceptions are epi pens, inhalers, and other medical devices which the scout is trained on and needs to carry on their person for extreme emergencies; please fill out this form and turn it in at check-in: [https://www.bsacac.org/my\\_files/epi\\_pen\\_and\\_inhalers\\_cac.pdf](https://www.bsacac.org/my_files/epi_pen_and_inhalers_cac.pdf)

### Not Allowed

Adult leaders should not allow the use of tobacco/vape products at any BSA activity involving youth participants. In addition, tobacco use in the presence of Scouts is not permitted at camp. Adult Leaders wishing to use tobacco products or vape may do so only in the main parking lot. The consumption, possession, or use of any alcohol, illegal drug or controlled substance is strictly forbidden on any Capitol Area Council property. We will report to authorities where violations involving local, state, or federal laws are reported. Fireworks, pets, personal firearms and ammunition, and personal bows and arrows, of any type are not allowed at camp. In addition, camp policy prohibits the carrying of fixed-blade knives except for the purposes of OA ceremonies and Living History night. Do not take home any wild animal. Pets of any kind are not allowed on camp unless they are a service animal. Violators will be asked to leave camp.

## Contact Capitol Area Council

### STEMboree - Primary Staff Contact

#### **Jessica Snider, Assistant Director of Support Services**

Among her many duties, Jessica oversees STEM and Conservation programs, and performs conservation research on our council's camp properties.

Office: (512) 617-8651

Cell: (512) 632-9395

[jessica.snider@scouting.org](mailto:jessica.snider@scouting.org)

### STEMboree - Primary Volunteer Contact

#### **Dr. Tim Urban, STEM Nova Committee Chair**

Tim has been volunteering for more than 14 years in the Capitol Area Council as a STEM advocate and resident rocket scientist.

(512) 627-0472

[drtimurban@gmail.com](mailto:drtimurban@gmail.com)

#### **CAC Webpage**

<https://www.bsacac.org>

#### **CAC STEM Webpage**

<https://bsastemnova.org>

#### **CAC Main Reception Desk**

(512) 617-8611

#### **Ron Settele, Director of Support Services**

Ron is responsible for developing council camping and training programs, the Scout Shop and our council's support staff. He reports to the Scout Executive.

Office: (512) 617-8636

Cell: (972) 822-0984

[ron.settele@scouting.org](mailto:ron.settele@scouting.org)

#### **Jon Yates, Scout Executive**

Jon supervises our council's professional staff. He reports to our council's Executive Board as well as the Southern Region and BSA National offices.

Office: (512) 617-8613

Cell: (512) 496-3289

[jon.yates@scouting.org](mailto:jon.yates@scouting.org)

Please reach out if you have any questions about our event.