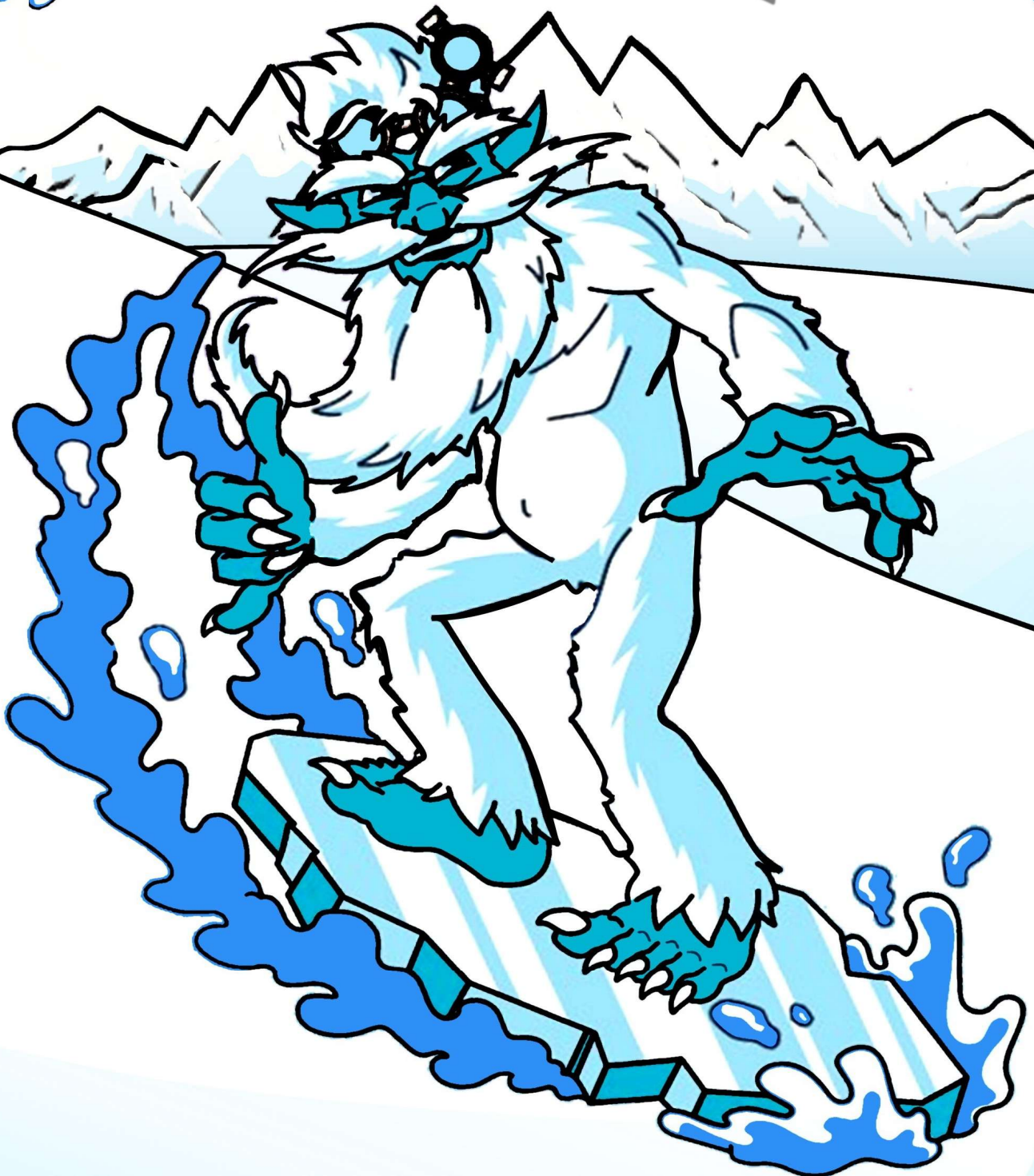


TRANSATLANTIC COUNCIL 2026

KLONDIKE DERBY

YETI ESCAPE



JANUARY 16-19, 2026 - KANDERSTEG INTERNATIONAL SCOUT CENTRE

INTRODUCTION

The Klondike Derby is an annual cold-weather camporee held by the Transatlantic Council as well as other Scouting America councils during the winter months based on the heritage of the Klondike Gold Rush. We hold this annual event in Kandersteg, Switzerland, in the heart of the Swiss Alps, taking advantage of the opportunities the International Scout Centre and Europe have to offer.

This year, our theme is “Yeti Escape.” The Yeti is an ape-like creature purported to inhabit the Himalayan Mountain range in Asia. In Western popular culture, the creature is commonly referred to as the Abominable Snowman.

Units/patrols will have to band together, prep their gear sledges, and prepare to explore the Scout Centre and Kandersteg, all while completing a variety of tasks set to test their Scout skills and knowledge. Scouts should be prepared to work together, work hard, work fast, and so much more! Don’t forget the Scout Spirit!

2026 KLONDIKE DERBY STAFF

Below is the primary leadership for this year’s event:

Klondike Camp Director: **Paul Skinner**

Klondike Program Director: **Ami Sansone**

Klondike Staff Advisers: **Trevor Nitz/John Erskine**

IF YOU HAVE ANY QUESTIONS

regarding the event or the event guide, please contact our team via email at klondikederby2025@gmail.com or follow the latest event updates on social media at



@TACscouting



@TACscouts

TABLE OF CONTENTS

OVERVIEW AND REGISTRATION INFORMATION	4
<i>WHO CAN ATTEND?</i>	<i>4</i>
<i>REGISTRATION</i>	<i>4</i>
<i>REGISTRATION FEES</i>	<i>5</i>
<i>PAYMENTS AND DEPOSITS.....</i>	<i>5</i>
<i>PARTICIPATING AS STAFF.....</i>	<i>5</i>
<i>REFUND POLICY</i>	<i>6</i>
<i>FOOD</i>	<i>6</i>
<i>ACCOMMODATION</i>	<i>7</i>
<i>CHECK-IN</i>	<i>7</i>
CAMPOREE SATURDAY	8
<i>OPENING CEREMONY.....</i>	<i>8</i>
<i>PROGRAM</i>	<i>8</i>
<i>PATROLS</i>	<i>9</i>
<i>SCORING.....</i>	<i>9</i>
<i>BROTHERHOOD WALK</i>	<i>9</i>
<i>CAMPFIRE.....</i>	<i>9</i>
WINTER SPORTS SUNDAY	10
<i>SCOUT'S OWN.....</i>	<i>10</i>
<i>WINTER SPORTS</i>	<i>10</i>
<i>HOW TO BOOK KISC ACTIVITIES.....</i>	<i>10</i>
<i>GAME DAY.....</i>	<i>10</i>
<i>MOVIE NIGHT.....</i>	<i>10</i>
IMPORTANT INFORMATION	11
<i>CHECKOUT.....</i>	<i>11</i>
<i>TRADING POST.....</i>	<i>11</i>
<i>GENERAL POLICIES AND RULES</i>	<i>12</i>
<i>MEDICAL REQUIREMENTS.....</i>	<i>13</i>
PACKING LIST.....	14

OVERVIEW AND REGISTRATION INFORMATION

The Klondike Derby will be held from **January 16-19, 2026**, at the [Kandersteg International Scout Centre \(KISC\)](#).

The address of the centre is: **Wagetiweg 7, 3718 Kandersteg, Switzerland**

WHO CAN ATTEND?

The Klondike Derby is open to all registered participants of Scout Troops, Venturing Crews, and Sea Scout Ships in the Transatlantic Council. Scouting America-registered adult Scouters are invited as well, especially to come and help volunteer to run a great program for the youth. Unfortunately, Cub Scouts cannot participate in this event.

REGISTRATION

IMPORTANT NOTE: Units must submit a single registration for all participants! Please do not create individual registrations. Also, DO NOT register Girls with the Boys Troop and vice versa. This also applies to any Troops participating in the Combined Troop Pilot Program. Separate Girl and Boy Troop registrations are necessary to facilitate gender-specific room allocation.

- Your Unit can register here: <https://www.scoutingevent.com/802-Klondike2026>
- Your Unit must fully complete its registration by **December 15, 2025**.
- Please note that KISC requires the collection of attendee passport numbers and food allergy information, so we ask that registrations are completed thoroughly. We request that the primary contact for your registration is an Adult Leader who will be attending the event since we will release more information as the Klondike Derby approaches.

We offer a variety of accommodation lengths for Units wanting to participate in this year's Klondike Derby:

Saturday ONLY Option – Only for Units wanting to attend the primary activity day on Saturday. Lunch and dinner on Saturday are included.

2-Night Option – Friday/Saturday nights with departure planned for Sunday – A great option for Units just wanting to participate in the main camporee event or not able to take advantage of the MLK holiday. Meals include Friday dinner through Sunday breakfast plus a packed lunch for Sunday.

3-Night Option – Friday/Saturday/Sunday nights with departure planned for Monday – All three evenings allow Units to participate in everything the Klondike Derby has to offer. Meals include Friday dinner through Monday breakfast plus a packed lunch for Monday.

REGISTRATION FEES

REGISTRATION TYPE	FEE	DETAILS
3-NIGHT OPTION	\$280.00	Friday, Saturday, and Sunday Evenings
2-NIGHT OPTION	\$230.00	Friday and Saturday Evenings
SATURDAY ONLY OPTION	\$90.00	Participation on Saturday ONLY

PAYMENTS AND DEPOSITS

- Event fees include meals, lodging, program, patch, and Klondike Derby swag.
- All payments must be made through the [ONLINE REGISTRATION SITE](#).
Registration payments cannot be accepted upon arrival.
- Saturday Only participants will be required to pay the full fee upon registration.
- **All fees MUST be paid by 11:59 pm CET on December 15, 2025.**

IMPORTANT: Please make sure your Unit has submitted the 2026 Charter; otherwise, you may not be permitted to attend the Klondike Derby.

PARTICIPATING AS STAFF

This program will not be able to run without huge volunteer support! Klondike Derby Staff Members will be tasked with running stations during the Saturday program. Staffing is primarily open to adults, but we have a few roles open to older youth and Order of the Arrow members. There are a few benefits to staffing the Klondike Derby:

- Bonus Staff Patch
- Meeting and networking with other Scout Leaders
- Discounted registration
- Delivering an amazing program to your Scouts!

You can participate as a staff member even if you are attending with a Unit. If your Unit has the appropriate minimum adult leadership to accompany Scouts around the course, additional leaders can help run program stations. You are still able to participate in the Winter Sports day with your Unit, as your staff services are only needed on Saturday.

If you are interested in volunteering to staff this year's event, please contact the Klondike Derby Staff at klondikederby2025@gmail.com for further instructions.

REFUND POLICY

This policy applies to Transatlantic Council and District Events. Some activities and events may have a non-refundable/non-transferable fee component. These are non-negotiable, as they were established by the event leadership to ensure financial stewardship of the event.

- All participation cancellation notifications and refund requests must be submitted in writing.
- Cancellations due to medical emergencies or other such unforeseen circumstances will be given the utmost consideration in favor of the registrant for any exceptions to the refund policy.
- 85% refund will be granted if cancellation is made before 15 December 2025.
- 50% refund will be granted if cancellation is made before 1 January 2026.
- 20% refund will be granted if cancellation is made before 15 January 2026.
- No refunds will be provided for a cancellation within 48 hours of the start of the event.
- All refunds are subject to a 15% administrative fee*, primarily to cover the transactional fees assessed by our financial institutions.
- Refunds will be processed within 30 days after the close of the event, with funds being deposited into the Unit Deposit Account.

** If the event is cancelled by the council, this will not apply.*

FOOD

- Food during the event is provided by the KISC staff in a traditional dining hall setup. Your Unit will be assigned a sitting time to eat in the dining hall. Please arrive promptly and eat quickly because we need to feed 300 people in only 90 minutes. On Saturday, we will be eating outside with a large communal hot lunch. **Bring your mess kit!** Washing stations will be provided.
- If you have any dietary restrictions, you must clearly mark this on your registration, including doctor-mandated diets, allergies, and religious restrictions. KISC Staff may need up to a month to procure and supply us with the required food, and we want to ensure all Scouts are well-fed. Participants will receive a colored wristband for specific food needs and will communicate those needs to the serving staff.
- The Scout Centre has a shop where you can purchase a range of snacks, candy and fizzy drinks, as well as a range of KISC souvenirs. We will be operating a hot beverage station during the Saturday events with coffee, tea, and hot chocolate.
- Participants who drop out of the event after December 15th may be charged a late drop fee to include the price of food ordered unless that spot can be filled by a last-minute replacement person.

ACCOMMODATION

Units will be staying in several dormitory-style rooms throughout the KISC property. The Klondike Derby Staff team will allocate the rooms. Youth Protection Policies set forth by Scouting America will always be followed.

We must respect and follow the KISC house rules and respect their staff during our stay at their facilities. Scouts and Unit Leaders will be responsible for keeping their rooms clean and tidy. Remember: **A Scout is Clean.**

CHECK-IN

Upon arrival at Kandersteg International Scout Centre and before checking in with the KISC team, your Scoutmaster and Senior Patrol Leader should report to the Klondike Derby Event Registration Team located in the Main Hall inside the Kanderlodge.

PLEASE MAKE SURE YOU HAVE THE FOLLOWING AT CHECK-IN:

- **COMPLETED ANNUAL HEALTH AND MEDICAL RECORDS** Parts A and B for each person attending (Youth & Adult). Participants registered for the 3-night option will require Part C as well.
- A copy of your **UNIT REGISTRATION ROSTER**
- Unit/Patrol **CAMPFIRE SONG AND SKIT PROPOSALS**

The Klondike Derby Staff will provide Units with a Klondike Event Packet that includes any updates to Derby plans along with everything needed for the rest of the event. Details for check-in with the KISC team will also be provided.

BE ON THE LOOKOUT: An Arrival Checklist will be made available to Unit Leaders 2 weeks before the event to help you stay on track.

REMINDER: You **MUST** check in with Klondike Derby Staff in the Kanderlodge Main Hall prior to KISC check-in. The KISC Team (Pinkies) will provide your orientation and get you settled in your rooms. The Klondike Derby Staff will be in the Kanderlodge throughout the weekend in case you need anything else.



CAMPOREE SATURDAY

OPENING CEREMONY

A short opening ceremony will be held before Units start the day's program. We will take a quick attendance (be prepared with a troop yell), conduct a small ceremony, rattle through some announcements, and get the Klondike fun underway. All patrols/units should bring their sledges!

PROGRAM

The Klondike Derby offers a traditional camporee round-robin style competition but with a couple of twists. This year's theme is "Yeti Escape." Scouts will have to brave the untamed wilderness with their trusted sledges and compete in a series of fun activities and tasks at program stations.

- Once the Opening Ceremony ends and the competition starts, Scouts will not be allowed to return to their rooms and collect additional items. They should be familiar with their patrol gear and all required items. Make sure to be dressed appropriately for the weather.
- All stations are open during both morning and afternoon sessions, so patrols will complete some stations after lunch. We will also have a couple of rest stops along the way.
- Patrols should strive to complete as many stations as they can in the allocated time. They may not be able to complete all of them. Patrols will be given a program station list and map to help navigate the course.
- Each Patrol will be allocated a station number to begin the course and then rotate through the stations from there.
- Program stations will be a mix of Scout Skills (up to First Class), puzzles, and team-building activities.
- Speed will be important for this year's Derby!



PATROLS

Scouts should be organized into Patrols, each with their own sledge. We recommend Patrols consist of no less than six (6) participants and no more than eight (8) participants.

- Ensure each Patrol is comprised of Scouts from a variety of ranks, merging junior and senior Scouts equally among the Patrols, if needed.
- Each Patrol should have a Patrol name, flag, and yell. Scout Spirit and enthusiasm are mandatory!
- Smaller troops and provisional Scouts may be paired with other Scouts to form reasonably sized Patrols.

A list of recommended Patrol Equipment is available in the [Packing List](#) at the end of this guide.

SCORING

The 2026 Klondike Derby will be a race to the end! Which patrol will be able to complete the stations and solve the puzzles the quickest? Gold nuggets may be earned for Scout Spirit and enthusiasm, but beware—there might be a Yeti lurking on the grounds of KISC. This Yeti might stop your Patrol and ask a Scouting-related question. If the Patrol answers correctly, no tax will be imposed. Answer incorrectly, and the Patrol may be at risk to lose gold nuggets.

After completing the program stations, Patrols will need to turn in all earned gold nuggets to the Klondike Derby Staff. Winners will be announced during the evening Campfire Program.

BROTHERHOOD WALK

An Order of the Arrow Brotherhood Walk will be held Saturday evening for all eligible OA members for \$25. Please add this option to your registration if you plan to participate.

CAMPFIRE

No Scout camping Event would be complete without a Campfire!

- Please prepare to lead a song or skit during the Saturday Evening Campfire.
- Troops should submit their songs or skits upon check-in but no later than the opening ceremony.
- Questions and clarifications will be addressed with Units during lunch. All songs and skits must be Scout appropriate!
- All awards will be announced during Campfire.
- It may be a bit cold, so make sure to dress warmly. The Campfire is planned to last no more than one hour.



WINTER SPORTS SUNDAY

SCOUT'S OWN

A Scout is Reverent. On Sunday morning we will hold a Scout's Own service in the Kanderlodge Main Hall. The service will take place after breakfast. All participants are encouraged to attend. Please be in your Field Uniform for the ceremony. The short service is planned for no longer than 30 minutes and will be interactive.

WINTER SPORTS

On Sunday, Units will have the opportunity to participate in winter sports programs coordinated through KISC. This is separate from the main Klondike Derby event and will incur additional fees, depending on the chosen activities. Some Units choose to bring their own gear, and others choose to rent through KISC.

Additionally, you can visit the [village of Kandersteg](#) to learn more about the local area. The village is a great area to explore, eat traditional Swiss foods, and do some shopping if you're not the biggest fan of winter sports.

Don't forget to wear your neckerchief while traveling on the local bus! Scouts and Adult Leaders wearing their neckerchiefs get to ride the local buses into town and back for free!

HOW TO BOOK KISC ACTIVITIES

Activities, rentals, and purchases must be booked directly with KISC! Please use the following KISC link to book Sunday activities: <https://go.kisc.ch/klondike26> **A few rules:**

- All KISC bookings should be submitted and paid for via this website.
- Only ONE booking per Unit/Group, do not make multiple bookings for a Unit.
- At least one Adult (18 or older) must be included in any booking that includes Youth under 18.
- Any questions or issues with the activities or the online booking should be directed to programme@kisc.ch. DO NOT send booking requests to this email.

GAME DAY

After a day out enjoying winter activities, join fellow Scouts in the Kanderlodge Main Hall for games before dinner. Games will be provided, but feel free to bring your favorite as well!

MOVIE NIGHT

A movie night is planned for the Scouts to enjoy on Sunday evening in the Kanderlodge Main Hall. We will announce the movie selection upon arrival. Troops will be responsible for any Scouts allowed to watch the movie. Adult Leaders will be present to supervise, but Troop Leaders are more than welcome to attend too!

IMPORTANT INFORMATION

CHECKOUT

Unfortunately, all good things must come to an end. Whether you are departing KISC on Sunday or Monday, your Unit will have to do a few things before departure:

1. **A Scout is Clean.** Clean your room, deposit the dirty sheets, and get it approved by a KISC Pinkie.
2. Once that is complete, return your room keys and finalize any remaining balance with KISC reception.
3. Complete your feedback form with your Scouts/Unit. We want to know how they enjoyed the event!
4. Come to the Klondike Derby Office in the Kanderlodge with your signed Checkout Sheet and the Klondike Derby Staff will confirm completion of all requirements.

You will receive your checkout packet along with your patches once all tasks are completed. KISC will assign fees to Units if rooms are not cleaned or maintained to their high standard.

- **IF CHECKING OUT ON SUNDAY**, please confirm the departure time for your Unit with the Klondike Derby Staff before the start of the event. We need to ensure KISC staff are available to conduct your checkout.
- **IF CHECKING OUT ON MONDAY**, you will need to check out of the event by **10:00 am**.

TRADING POST

The Transatlantic Council (TAC) will be running a small Trading Post over the course of the weekend.

- The TAC Trading Post will be located in the Kanderlodge Main Hall. Access to the TAC Trading Post may be limited based on the size of the space.
- A limited number of pre-order items will be available during your registration from the Program Supply Center to be delivered to you at Klondike.
- All TAC Trading Post prices are in U.S. Dollars (*USD*), and the preferred method of payment is via credit card. The TAC Trading Post can also accept cash in USD and Euro. Purchases in Euro cash will be accepted at a 1 Euro to 1 USD exchange rate.
- The TAC Trading Post will not be selling American snacks or foods.

KISC also has a trading/gift shop available.

- They can only accept Swiss Francs (*CHF*) and credit card payments.
- The KISC gift shop has KISC swag, candy, snacks, and drinks.

GENERAL POLICIES AND RULES

The event takes place at the height of winter in the Swiss Alps, so Scouts should be prepared for the cold weather. Only Scouts properly dressed and prepared for the weather should attend this event. The program on Saturday takes the form of outdoor competition, during which Patrols will be moving between activity stations.

Unit leaders are responsible to instruct all participants beforehand as to the proper clothing to wear and gear to bring when participating in winter activities. Please be prepared for worst-case scenarios, which could be very cold temperatures with driving rain all weekend or potentially a snowstorm. A recommended event Packing List is available on the last page of this program guide and via the [registration website](#).

- **All Scouts can and will participate, regardless of skill level.**
- **Leave No Trace principles will be in effect during the entire weekend:**
 - Debris and garbage are the responsibility of each person, and any teams found littering will lose points from their overall score.
 - Recycling is a top priority at KISC. You will find recycling stations all around the KISC facilities. Klondike Derby participants are expected to follow these recycling and sustainability measures while attending events at KISC.
- **The consumption of alcoholic beverages, illicit and illegal drugs, and other substances is strictly prohibited.**
 - Any encouragement of the consumption of alcohol or drugs by youth or adults will result in immediate dismissal from the event.
- **Adult use of tobacco must be limited to KISC-designated smoking areas, away from the sight of youth. Smoking is not permitted in KISC facilities, lodging, or activity areas.**
- **Non-folding knives, sheath knives, or blades greater than a palm's width (3-inches) are forbidden at this event.**
 - Individuals with knives must have earned their Totin' Chip.
- **Any form of personal firearms or projectile weapons are prohibited at this event. This includes but is not limited to:**
 - Real or toy firearms, including BB guns, air rifles, and paintball guns.
 - Bows, slingshots, crossbows, throwing weapons.
 - Any ammunition for the aforementioned items.
- **Any dangerous or explosive items are prohibited, such as fireworks, liquid fuels, model rockets, and any other hazardous materials.**

MEDICAL REQUIREMENTS

ANNUAL HEALTH AND MEDICAL RECORD

Each Unit Leader or designee shall have in their possession the BSA Annual Health and Medical Record Forms for each Scout and Leader in their contingent. Unit Leaders should maintain a binder with their Unit's information. Klondike Derby Staff will review medical forms upon arrival at the Klondike Derby. As a reminder, Parts A and B are required for each person attending (Youth & Adult). Participants registered for the 3-night option will require Part C as well.

Please alert the Klondike Medical Staff of any outstanding health requirements, needs, and/or concerns. If you have any questions/concerns or medical requirements, please get in contact with the Klondike Derby Staff at klondikederby2025@gmail.com.

COMMUNICABLE DISEASE PREVENTION MEASURES

The primary goal of the Transatlantic Council and Boy Scouts of America is the health and safety of our participants. It is the priority of the event leadership and TAC professional staff to minimize the risk of transmitting illnesses at the Klondike Derby.

We strongly recommend that all individuals evaluate the risks they could face if participating in the event. As with all medical conditions and potential exposure to communicable diseases, discuss with your physician the right course of action.

The event will have many instances when many people will be gathered together in relatively limited spaces. Additionally, most of the participants will be sharing lodging facilities with several other Scouts or Adults. Communicable illnesses can quickly spread in close quarters and one sick person could cause many others to become ill.

If you are feeling ill during the days and hours leading up to your arrival in Kandersteg, please be considerate of others and do not attend this event.



PACKING LIST

SCOUT OUTDOOR ESSENTIALS

- First-Aid Kit
- Flashlight
- Water Bottle
- Rain Gear
- Trail Food
- Sun Protection
- Pocket Knife
- Extra Clothing
- Matches & Fire Starters
- Map & Compass

RECOMMENDED COLD WEATHER OUTING GEAR

- Long-Sleeved Shirts
- Warm Hooded Parka or Jacket
- Long Pants (*fleece or wool*)
- Stocking Hat (*fleece or wool*)
- Sweaters (*fleece or wool*)
- Mittens or Gloves with Water-Resistant Shells (*fleece or wool*)
- Long Underwear (*polypropylene*)
- Wool Scarf
- Hiking Boots or Sturdy Shoes
- Bandana
- Snow Boots
- Rain Gear
- Socks (*wool or synthetic*)

KEEPING CLEAN

- Toothbrush
- Waterless Hand Cleaner
- Toothpaste
- Washcloth
- Dental Floss
- Toilet Paper
- Soap
- Small Towel
- Comb

SATURDAY PROGRAM EQUIPMENT LIST

PERSONAL GEAR

In addition to the 10 Scout Outdoor Essentials, each Scout and Scouter should have a day pack with the following for Saturday's program:

- ☐ Extra Layers of Warm Clothing
- ☐ Hat, Gloves, and Scarf
- ☐ Extra Socks
- ☐ Mess Kit & Mug (*must have for Saturday lunch*)
- ☐ Snow Boots (*highly recommended*)
- ☐ Plenty of Water
- ☐ Sun Protection (*i.e. sunglasses, sunscreen, broad hat*)
- ☐ Hand Warmers
- ☐ Extra Snacks (*optional*)

TROOP/PATROL GEAR

Our Saturday program will have Troops and Patrols competing in a series of challenges that will test your Scouts' skills and teamwork prowess. Your Troop will need to bring each Patrol a few supplies to help you succeed in the Challenges:

- ☐ Sled
- ☐ Simple Totin' Chip Tools (*hatchet, small saw*)
- ☐ Rope (*A few lengths for the lashings & knots*)
- ☐ Patrol First Aid Kit
- ☐ Methods to Help Start Fires
- ☐ Mapping Tools (*compass*)
- ☐ Water Vessel (*to carry spare water*)
- ☐ Tarp (*to make dry temporary seating in the snow*)
- ☐ Shovel (*to help dig out the sled if needed*)
- ☐ Small Bag or Box (*to store Gold Nuggets*)
- ☐ Patrol Flag and Cheer!

** These items are normally carried via sled over the day. Note that a sled will be critical to several of this year's challenges!*