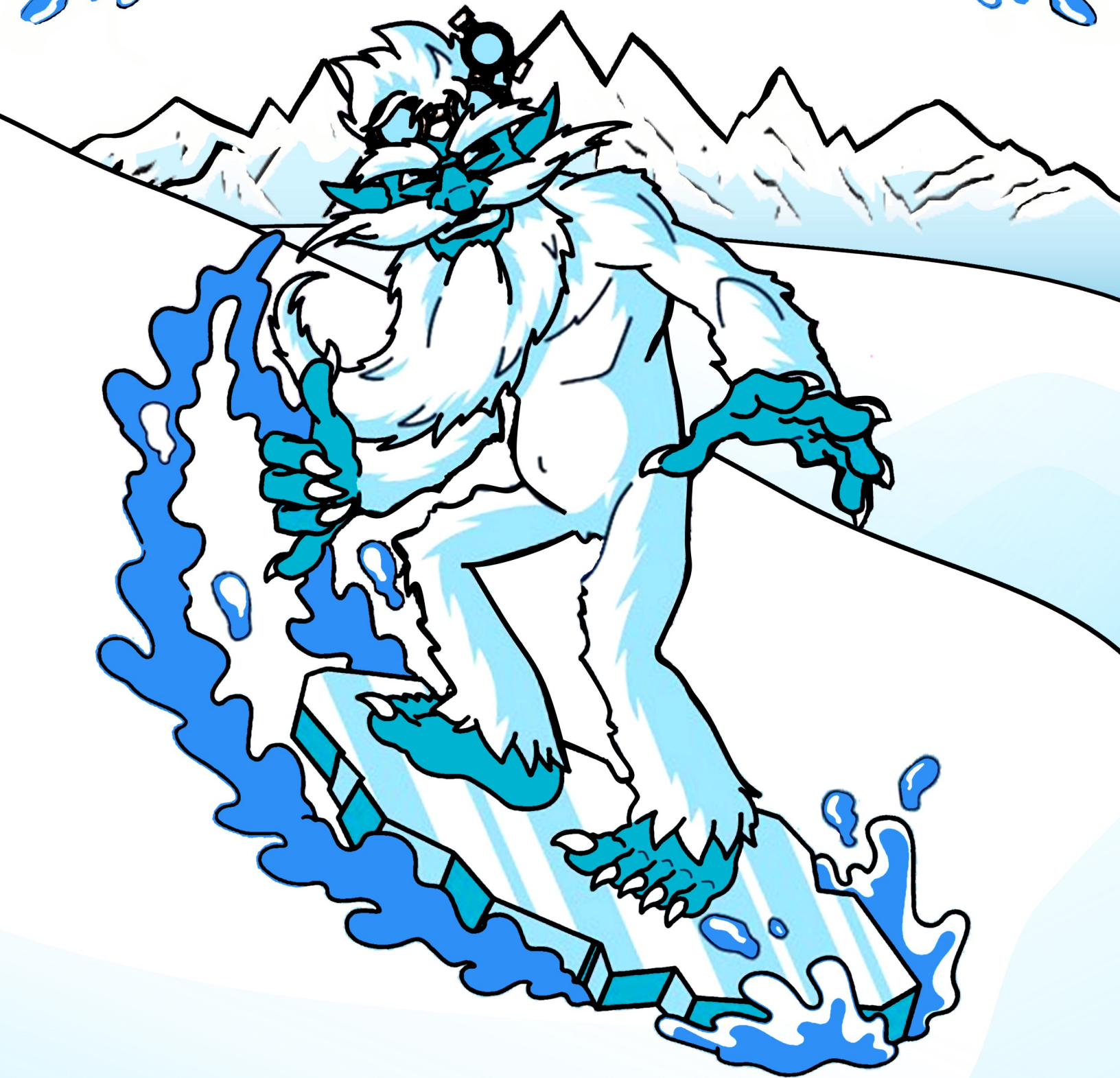


BSA TRANSATLANTIC COUNCIL 2024

KLONDIKE DERBY

LAND OF THE YETI



JANUARY 12-15, 2024



KANDERSTEG INTERNATIONAL SCOUT CENTRE

INTRODUCTION

The Klondike Derby is an annual cold-weather camporee held by the Transatlantic Council and other BSA councils during the winter months based on the heritage of the Klondike Gold Rush. We hold this annual event in Kandersteg, Switzerland in the heart of the Swiss Alps, taking advantage of the opportunities the International Scout Centre and Europe have to offer.

This year, our theme is the “Land of the Yeti.” The Yeti is an ape-like creature purported to inhabit the Himalayan Mountain range in Asia. In Western popular culture, the creature is commonly referred to as the Abominable Snowman.

Units or patrols will have to band together, prep their gear sledges, and prepare to explore the Scout Centre and Kandersteg, all while completing a variety of tasks set to test their Scout skills and knowledge. Scouts should be prepared to win gold nuggets, spot hidden Yetis, and try to win the coveted Frozen Eagle for their Unit!

2024 KLONDIKE DERBY STAFF

Below is the primary leadership for this year's event:

Klondike Camp Director: Patrick Thomas

Klondike Program Director: Michael Garst

Klondike Staff Adviser: Trevor Nitz

IF YOU HAVE ANY QUESTIONS

regarding the event or the event guide, please contact our team via email at klondike@tac-bsa.org or follow the latest event updates on social media at



TABLE OF CONTENTS

Introduction.....	2
Klondike Derby Staff	2
Table of Contents.....	3
Overview and Registration Information	4
Who Can Attend?.....	4
Registration	4
Participating as Staff	5
Fees	5
Payments and Deposits.....	5
Refund Policy	6
Food	6
Accommodation	7
Check-in.....	7
Camporee Saturday	8
Opening Ceremony.....	8
Program.....	8
Patrols	9
Scoring.....	9
Campfire.....	9
Winter Sports Sunday	10
Scout’s Own.....	10
Winter Sports	10
Guided Activities.....	10
Self-Guided Activities.....	11
How to Book.....	11
Movie Night.....	11
Trading Post	12
Check-out	12
General Policies and Rules	13
Medical Checks.....	14
COVID-19 Prevention Measures.....	14
Klondike Packing List.....	15

OVERVIEW AND REGISTRATION INFORMATION

The Klondike Derby will be held from **January 12-15, 2024** at the [Kandersteg International Scout Centre](#). The address of the centre is:

**Wagetiweg 7
Kandersteg 3718
Switzerland**

WHO CAN ATTEND?

The Klondike Derby is open to all registered participants of Scouts BSA, Venturing, and Sea Scout Programs in the Transatlantic Council. BSA-registered Scouters are invited as well, especially to come and help volunteer to run a great program for the youth. Unfortunately, Cub Scouts cannot participate in this event.

REGISTRATION

- Your Unit can register for the Klondike Derby via our [Online Registration Form](#).
- Your Unit must fully complete its registration by **DECEMBER 15, 2023**.
- Please note that KISC requires the collection of attendee **Passport numbers and food allergy information**, so we ask that registrations are completed thoroughly. We request that the primary contact for your registration is an Adult Leader who will be attending the event since we will release more information closer to the event.

We offer a variety of accommodation lengths for Units wanting to participate in this year's Klondike Derby:

[Saturday ONLY Option](#) – Only for Units wanting to attend the primary activity day on Saturday. Lunch and dinner on Saturday are included.

[2-Night Option](#) – Friday/Saturday nights with departure planned for Sunday – A great option for Units just wanting to participate in the main camporee event or not able to take advantage of the MLK holiday days. Meals: Friday dinner through Sunday breakfast, including a packed lunch for Sunday.

[3-Night Option](#) – Friday/Saturday/Sunday nights with departure planned for Monday – All three evenings allows Units to participate in everything the Klondike Derby has to offer. Meals: Friday dinner through Monday breakfast, including packed lunches for Sunday and Monday.

REGISTRATION FEES

REGISTRATION TYPE	FEE	DETAILS
3-NIGHT OPTION	\$240.00	Friday, Saturday, and Sunday Evenings
2-NIGHT OPTION	\$205.00	Friday and Saturday Evenings
SATURDAY ONLY OPTION	\$60.00	Participation on Saturday ONLY

PAYMENTS AND DEPOSITS

- Event fees include meals, lodging, program, patches, and some Klondike Derby swag.
- All payments and deposits must be made through the [Online Registration Form](#). Registration payments cannot be accepted upon arrival.
- A deposit of \$100.00 per participant is required during your initial booking for the event.
- Saturday Only participants will be required to pay the full fee at registration.
- **All fees must be paid by 11:59pm CET on December 15, 2023.**

IMPORTANT: Please make sure your Unit has submitted the 2024 Charter, otherwise you may not be permitted to attend the Klondike Derby.

PARTICIPATING AS STAFF

This program would not be able to run without huge volunteer support! Klondike Derby Staff Members will be tasked with running program stations on the Saturday camporee day. Staffing is primarily open to adults, but we have a few roles open to older youth and Order of the Arrow members. There are a few benefits to staffing the Klondike Derby:

- **Bonus Staff Patch**
- **Meet and network with other Scout Leaders**
- **Thank-you Cracker Barrel**
- **20% discount on your registration**
- **Help deliver an amazing program to your Scouts!**

You can participate as a staff member even if you are attending with a Unit. If your Unit has the appropriate minimum adult leadership to accompany Scouts around the course, additional leaders can help run program stations. You are still able to participate on the Winter Sports day with your Unit, as your staff services are only needed on Saturday.

If you are interested in volunteering to staff this year's event, please complete the online [Klondike Derby Staff Survey](#), and you will be contacted by a member of the Derby staff.

REFUND POLICY

This policy applies to Transatlantic Council and District Events. Some activities and events may have a non-refundable/non-transferable fee component. These are non-negotiable, as they were established by the event leadership to ensure financial stewardship of the event.

- All participation cancellation notifications and refund requests must be submitted in writing.
- Cancellations due to medical emergencies or other such unforeseen circumstances will be given the utmost consideration in favor of the registrant for any exceptions to the refund policy.
- 85% Refund will be granted if cancellation is made more than one week in advance of the event.
- 50% Refund will be granted if cancellation is made one week or less
- No refunds will be provided for a cancellation within 24 hours of the start of the event.
- All refunds are subject to a 15% administrative fee*, primarily to cover the transactional fees assessed by our financial institutions.
- Refunds will be processed within 30 days after the close of the event, with funds being deposited into the Unit Deposit Account.

** if the event is cancelled by the council, this will not apply.*

FOOD

- Food during the event is provided by the KISC staff in a traditional dining hall setup. Your Unit will be assigned a sitting time to come and eat at the dining hall. Please arrive promptly and eat quickly because we need to feed 300 people in only 90 minutes. On Saturday, we will be eating outside with a large communal hot lunch, and you will have to bring a mess kit with you. There will be washing stations provided.
- If you have any dietary restrictions, you must mark this clearly on your registration, including doctor-mandated diets, allergies, and religious restrictions. KISC Staff may need up to a month to procure and supply us with the correct food, and we want to make sure all Scouts are well-fed. You will receive a colored wristband for your specific food needs and will have to tell the serving staff what meal you need.
- The Scout Centre has a shop where you can purchase a range of snacks, candy and fizzy drinks, as well as a range of KISC souvenirs. We will be operating a few hot beverage stations during the Saturday events with coffee and hot water for tea and hot chocolate.
- Participants who drop out of the event after December 15th may be charged a late drop fee to include the price of food ordered unless that spot can be filled by a last-minute replacement person.

ACCOMMODATION

Units will be staying in several dormitory-style rooms throughout the KISC property. The Klondike Derby Staff team will allocate the rooms. We will always follow the requirements set forth by the Boy Scouts of America Youth Protection Policies.

We must respect and follow the KISC house rules and respect their staff during our stay at their facilities. Scouts and Unit Leaders will be responsible for keeping their rooms clean and tidy. Remember: **A Scout is Clean.**

CHECK-IN

Upon arrival at Kandersteg International Scout Centre, and before checking in with the KISC team, your Scoutmaster and Senior Patrol Leader should report to the Klondike Derby Event Registration Team which will be located in the Kanderlodge Main Hall.

PLEASE MAKE SURE YOU HAVE THE FOLLOWING AT CHECK-IN:

- **COMPLETED BSA ANNUAL HEALTH AND MEDICAL RECORDS** Parts A and B for each person attending (Youth + Adult). Participants registered for the 3-night booking will require part C as well.
- A copy of your **UNIT REGISTRATION ROSTER**
- Unit/Patrol **CAMPFIRE SONG AND SKIT PROPOSALS**

The Klondike Derby Staff will provide Units with a Klondike Event packet with any updates to Derby plans and everything you should need for the rest of the event, and then they will provide the details for the check-in with the KISC team.

BE ON THE LOOKOUT: An Arrival Checklist will be made available to Unit Leaders a month before the event to help you stay on track.

REMINDER: You **MUST** check in with Klondike Derby Staff in the Kanderlodge Main Hall prior to KISC check-in. The KISC Team will then get you settled in your rooms and give you their induction. The Klondike Derby Staff will be in the Kanderlodge throughout the weekend in case you need anything else.



CAMPOREE SATURDAY

OPENING CEREMONY

We will be hosting a quick opening ceremony before Units start the day's program. We will take a quick attendance, conduct a small ceremony, rattle through some announcements and then get the Klondike fun underway.

Your Patrol/Unit will have to get a quick gear check of your Patrol's sledges and then will be led to your starting program station by a member of our Klondike staff. Don't forget, you get extra points for Scout Spirit!

PROGRAM

Klondike Derby offers a traditional camporee round-robin style competition but with a couple of twists. This year's theme is "Land of the Yeti." Scouts will have to brave the untamed wilderness, with their trusted sledges and compete in a series of fun activities and tasks at program stations.

- Once the Opening Ceremony ends and the competition starts, Scouts will not be allowed to return to their rooms and collect additional items. They should be familiar with their Patrol gear and all the required items. Make sure to be dressed appropriately for the weather.
- The stations are open during both morning and afternoon sessions, so they will complete some stations after lunch. We will also have a couple of rest stops along the way.
- Patrols should strive to complete as many stations as they can in the allocated time. They may not be able to complete all of them. Patrols will be given a program station list and a map to help navigate the course.
- Each Patrol will be allocated a station number to begin the course and then rotate through the stations from there.
- Please don't skip stations, as it can cause more problems later in the day.
- Program stations will include Scout Skills, up to First Class, team activities and some general fun activities.
- Each station should last a maximum of 30 minutes.



PATROLS

Scouts should be organized into Patrols, each with their own sledges. We recommend Patrols consist of no less than six (6) participants.

- Make sure each Patrol is made up of Scouts from a variety of ranks, merging junior and senior Scouts equally among the Patrols if needed.
- Each Patrol should have a Patrol name, flag, and yell. Scout Spirit and enthusiasm is mandatory!
- If you are a smaller troop or coming as provisional Scouts, you may be paired with other Scouts to form a reasonably sized Patrol.

A list of recommended Patrol Equipment is available in the [Packing List](#) on page 15 of this guide, and will also be posted to the [Klondike Derby registration website](#).

SCORING

Each Patrol will earn gold nuggets when competing in each activity. There is a limit that stations can give out. You can earn extra nuggets for Scout spirit and enthusiasm, but beware—there might be Yetis lurking on the grounds of KISC. They might stop your Patrol and question you with a Scouting related question. If you answer correctly, you may walk free with no charge. Answer incorrectly and you'll be ransomed some of your nuggets.

After completing the program stations, you need to hand-in your nugget pouch to the Klondike Derby Staff and they will calculate your score. Participants will learn the winner of the competition at the evening Campfire.

CAMPFIRE

No Scout camping Event would be complete without a Campfire!

- Please prepare to lead a song or skit for the Saturday Evening Campfire.
- Troops should submit their songs and/or skits upon check-in, but not later than the opening ceremony.
- Questions and clarifications will be addressed with Units during lunch. All songs and skits must be BSA Scout appropriate!
- We will be handing out all awards during the Campfire.
- It may be a bit cold so make sure to dress warmly. The Campfire is planned to last no more than one hour.



WINTER SPORTS SUNDAY

SCOUT'S OWN

A Scout is Reverent. On Sunday morning we will hold a Scout's Own service. The service is scheduled after breakfast. All participants are encouraged to attend. Please be in your Field Uniform for the ceremony. The short service is planned to be no longer than 30 minutes and be interactive.

WINTER SPORTS

On Sunday, Units will have the opportunity to participate in winter sports programs coordinated through KISC. This is separate from the main Klondike Derby event and will incur additional fees. Some Units choose to bring their own gear and others choose to rent through KISC. KISC has suggested the following potential activities:

GUIDED ACTIVITIES		
ACTIVITY	DESCRIPTION	FEES
Gemmipass Hike`n`Sled <i>(Full-Day)</i>	Hike the historic Gemmipass along snowy trails, while enjoying amazing views of the surrounding peaks until arriving at Gemmi. You will then hike and sledge your way back; a worthy reward for the hike! For more information, look here!	Adult CHF 45.00 Child CHF 30.00 <i>(includes KISC guide, sled rental and cable car tickets)</i> Helmet Rental CHF 9.00 <i>(Required)</i>
Winter Survival Experience <i>(Full-Day)</i>	KISC guides will take you through snowy forests on snowshoes to a viewpoint above Kandersteg. Along the way, they will teach you about emergency shelters, how to find your friends in an avalanche and some survival first aid! For more information, look here!	Adult CHF 25.00 Child CHF 20.00 <i>(includes KISC guide & snowshoe rental)</i>
Curling <i>(Half-Day, Morning & Afternoon)</i>	Take a trip to the local curling hall in Kandersteg along with a Pinkie. They will teach you everything you need to know, from brushing to sliding. The session will begin with instruction of how to play this sport and then give you the opportunity to play against your friends. For more information, look here!	Adult CHF 21.00 Child CHF 21.00 <i>(includes KISC guide & shoe rental)</i>
Igloo Building <i>(Half-Day, Morning & Afternoon)</i>	With help from a Pinkie, learn the age-old skill of building a shelter with snow. Depending on the snow conditions you could construct an igloo or dig a snow cave. Can you make one to fit your whole group in? For more information, look here!	Adult CHF 4.00 Child CHF 4.00 <i>(includes KISC guide & activity material)</i>
Valley Snowshoeing <i>(Half-Day, Morning & Afternoon)</i>	Explore the forests around Kandersteg with snowshoes. Our KISC Guides will teach you the basics and deliver some fun games along the way! For more information, look here!	Adult CHF 12.00 Child CHF 12.00 <i>(includes KISC guide & snowshoe rental)</i>

SELF-GUIDED ACTIVITIES

ACTIVITY	INFORMATION
Skiing and Snowboarding	<ul style="list-style-type: none">• For information about ski/snowboard equipment rental, look here!• To buy a lift ticket for Kandersteg (<i>Oeschinensee</i>), look here!• To book a private ski/snowboarding lesson at Oeschinensee (<i>you must also purchase a lift ticket</i>), look here!• To book group ski/snowboarding lessons at Oeschinensee (<i>you must also purchase a lift ticket</i>), look here!
Sled Rental	<ul style="list-style-type: none">• To rent sleds, look here!
Snowshoe Rental	<ul style="list-style-type: none">• To rent snowshoes, look here! For recommended routes, and to purchase lift tickets, speak to the KISC programme team in reception when you arrive.
Ice Skating	<ul style="list-style-type: none">• For more information, look here!

HOW TO BOOK

Activities, rental and purchases must be booked directly with KISC!

- Go to the [KISC webpage](#), create an account, and log in. Once in, go to 'BOOK' and then 'BOOKING ACTIVITIES – WINTER' or 'BOOK WINTER RENTALS' to create your booking form(s).
- The booking form(s) should be sent to KISC by **Friday, December 15th after 10:00am CET**. Activity allocation will operate on a first-come, first-served basis.
- Make sure you include the following essential details on any booking: Your **association with the Klondike Derby**; your **Troop Name/Number**; and **the number of Adults and Scouts with age breakouts**.
- Any correspondence with KISC should include your **Booking Number** in the e-mail subject line.

Additionally, you can visit the [village of Kandersteg](#) to learn more about the local area. The village is a great area to explore, eat traditional Swiss foods, and do some shopping if you're not the biggest fan of winter sports.

Don't forget to wear your neckerchief while traveling on the local bus! Scouts and Adult Leaders get to ride the local buses into town and back for free!

MOVIE NIGHT

A movie night is planned for the Scouts to enjoy on Sunday evening in the Kanderlodge Main Hall (*we'll announce the PG or PG-13 movie before the event on our [Facebook page](#) and via e-mail*). Troops will be responsible for any Scouts allowed to watch the movie. Adult Leaders will be present to supervise, but Troop Leaders are more than welcome to attend too!

TRADING POST

As always, the Transatlantic Council (TAC) will be running a small Trading Post over the course of the weekend.

- The Trading Post will be located in the Kanderlodge Main Hall (*with the Klondike Derby Staff Office*). Access to the Trading Post may be limited based on the size of the space.
- You will have the option to pre-order limited items from the Program Supply Center to be delivered at Klondike. These will be listed on your registration page.
- All Trading Post prices are in U.S. Dollars (*USD*), and the preferred method of payment is via credit card.
- The Trading Post can also accept cash in USD and Euro.
- Purchases in Euro cash will be accepted at a 1 Euro to 1 USD exchange rate.
- The TAC Trading Post will not be selling American snacks or foods.

KISC also has a trading/gift shop available.

- They can only accept Swiss Francs (*CHF*) and credit card payments.
- The KISC gift shop has KISC swag, candy and snacks and drinks.

CHECK-OUT

Unfortunately, all good things must come to an end. Whether you are departing KISC on Sunday or Monday, before we can let you depart the event, your Unit will have to do a few things:

1. **A Scout is Clean.** Clean your room, deposit the dirty sheets, and get it approved by a KISC Pinkie.
2. Once that is complete, return your room keys, and finalize any remaining balance with KISC reception.
3. Complete your feedback form with your Scouts/Unit. We want to know how they enjoyed the event!
4. Come to the Klondike Derby Office in the Kanderlodge with your signed Check-out Sheet and the Klondike Derby Staff will confirm the completion of all requirements.

You'll receive your check-out packet along with your patches once all tasks are completed. KISC will assign fees to Units if rooms are not cleaned or maintained to their high standard.

- **IF CHECKING OUT ON SUNDAY**, please confirm the departure time for your Unit with the Klondike Derby Staff before the start of the event. We need to make sure that KISC staff are available to conduct your check-out.
- **IF CHECKING OUT ON MONDAY**, you'll need to check-out of the event by **10:00am**. We will review the check-out procedures at the Leader's Close-out Meeting on Sunday Evening.

GENERAL POLICIES AND RULES

The event takes place at the height of winter in the Swiss Alps, so Scouts should be prepared for the cold weather. Only Scouts properly dressed and prepared for the weather should attend this event. The program on Saturday takes the form of outdoor competition, which Patrols will be roving between activity stations.

Unit leaders are responsible to instruct all participants beforehand as to the proper clothing to wear and gear to bring when winter camping. Please be prepared for the worst-case scenarios, which could be very cold temperatures with driving rain all weekend, or potentially a snowstorm. A recommended event [Packing List](#) is available on page 15 of this program guide and via the [registration website](#).

- **All Scouts can and will participate, regardless of skill level.**
- **Leave No Trace principles will be in effect during the entire weekend:**
 - Debris and garbage are the responsibility of each person, and any teams found littering will lose points from their overall score
 - Recycling is a top priority at KISC. You will find recycling stations all around the KISC facilities. Klondike Derby participants are expected to follow these recycling and sustainability measures while attending events at KISC.
- **The consumption of alcoholic beverages, illicit and illegal drugs, and other substances is strictly prohibited.**
 - Any encouragement of the consumption of alcohol or drugs by youth or adults will result in immediate dismissal from the event.
- **Adult use of tobacco must be limited to designated smoking areas, away from the sight of the youth, and smoking is not permitted in KISC facilities, lodging, or activity areas.**
- **Non-folding knives, sheath knives, or blades greater than a palm's width (3-inches) are forbidden at this event.**
 - Individuals with knives must have earned their Totin' Chip.
- **Any form of personal firearms or projectile weapons are prohibited at this event. This includes but is not limited to:**
 - Real or Toy firearms, including BB guns, air rifles and paintball guns.
 - Bows, slingshots, crossbows, throwing weapons.
 - Any of the ammunition for the aforementioned items.
- **Any dangerous or explosive items are prohibited, such as fireworks, liquid fuels, model rockets and any other hazardous materials.**

MEDICAL CHECKS

Each Unit Leader or their designee shall have in their possession the BSA Annual Health and Medical Record Forms for each Scout and Scouter. Unit Leaders should maintain a binder with their Unit's info. Klondike Derby Staff will review medical forms upon arrival at the Klondike Derby.

Please alert Klondike Medical Staff of any outstanding health requirements, needs or concerns. If you have any questions/concerns or medical requirements, please get in contact with the Klondike Derby Staff at klondike@tac-bsa.org.

COVID-19 PREVENTION MEASURES

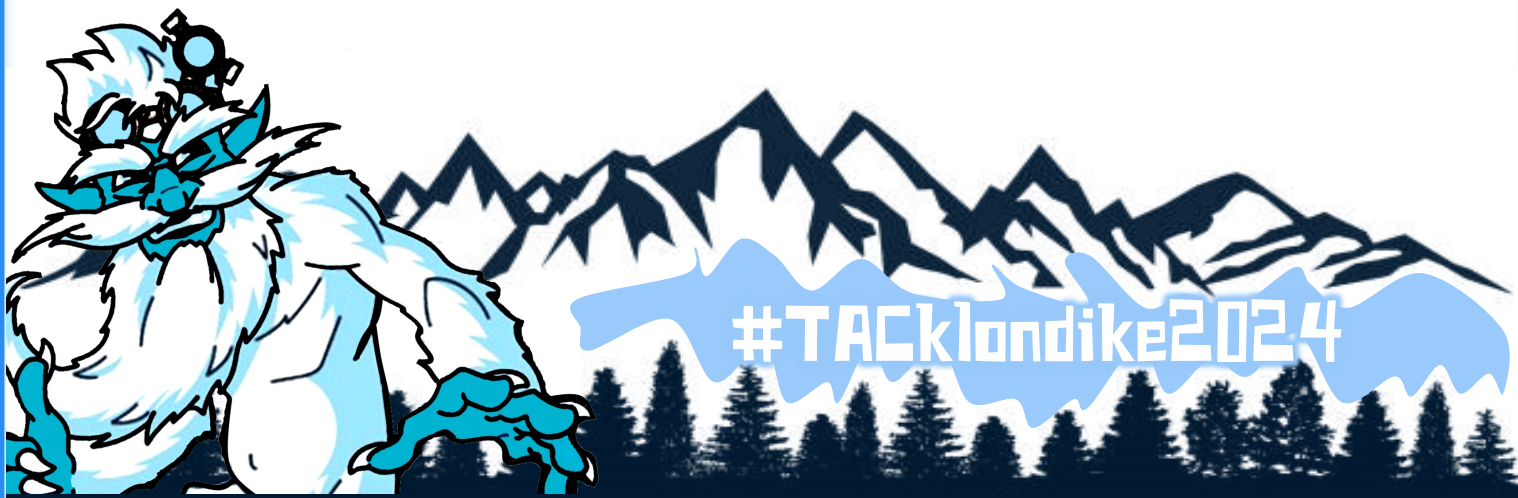
The primary goal of the Transatlantic Council and Boy Scouts of America is that the health and safety of our participants comes first. It is the priority of the event leadership and TAC professional staff to minimize the risk of COVID-19 transmission at the Klondike Derby.

We, the event leadership, may be implementing social distancing and other measures to reduce the risk of transmission. We are monitoring the current climate and adapting our strategy to it. We will partner with KISC to ensure their facilities can comply with local government requirements for minimizing COVID-19 transmission.

Units will be informed of the full measures closer to the time of the Klondike Derby. With coronavirus, an environment so volatile, we do not want to issue guidance before the proper time. This is to prevent the guidance from becoming out-dated or incorrect and causing confusion for our participants.

WE CANNOT GUARANTEE THAT THE KLONDIKE DERBY WILL BE A COVID-19 RISK-FREE EVENT

We strongly recommend that all individuals evaluate the risks they could face if coming to participate in the Derby, discuss with your physician, and determine the right course of action. We do not recommend that individuals with serious underlying medical conditions that can be exacerbated by the coronavirus attend this event.



PACKING LIST

SCOUT OUTDOOR ESSENTIALS

- Pocket Knife
- First-Aid Kit
- Extra Clothing
- Rain Gear
- Water Bottle
- Flashlight
- Trail Food
- Matches and Fire Starter
- Sun Protection
- Map and Compass

RECOMMENDED COLD WEATHER OUTING GEAR

- Long-Sleeved Shirts
- Long Pants (*fleece or wool*)
- Sweaters (*fleece or wool*)
- Long Underwear (*polypropylene*)
- Hiking Boots or Sturdy Shoes
- Snow Boots
- Socks (*wool or synthetic*)
- Warm Hooded Parka or Jacket
- Stocking Hat (*fleece or wool*)
- Mittens or Gloves with Water-Resistant Shells (*fleece or wool*)
- Wool Scarf
- Bandana
- Rain Gear

KEEPING CLEAN

- Toothbrush
- Toothpaste
- Dental Floss
- Soap
- Comb
- Small Towel
- Waterless Hand Cleaner
- Washcloth
- Toilet Paper
- Trowel (*for digging cathole latrines*)

SATURDAY PROGRAM EQUIPMENT LIST

PERSONAL GEAR

In addition to the 10 Scout Outdoor Essentials, each Scout and Scouter should have a day pack with the following for Saturday's program:

- Extra Layers of Warm Clothing
- Hat, Gloves, and Scarf
- Extra Socks
- Mess Kit (*for Saturday lunch*)
- Snow Boots (*recommended*)
- Plenty of Water
- Sun Protection (*i.e. sunglasses, sunscreen, broad hat*)
- Hand Warmers
- Extra Snacks (*optional*)

TROOP/PATROL GEAR

Our Saturday program will have Troops and Patrols competing in a series of challenges that will test your Scouts' skills and teamwork prowess. Your Troop will need to bring each Patrol a few supplies to help you succeed in the Challenges:

- Sledge
- Simple Totin' Chip Tools (*hatchet, small saw*)
- Rope (*A few lengths for the Lashing Challenge*)
- Patrol First-Aid Kit
- Methods to Help Start Fires
- Mapping Tools (*compass*)
- Water Vessel (*to carry spare water*)
- Tarp (*to make dry temporary seating in the snow*)
- Shovel (*to help dig out the sledge if needed*)
- Bag or Box (*to store Gold Nuggets*)
- Patrol Flag and Cheer!

These items are normally carried via sledge over the day, but the list is small enough that your Scouts could split the load between them.