



Welcome to Spanish Trail Scout Reservation!

Lion / Tiger Growl - Short-Term Camping Guide

If you are reading this guide – CONGRATULATIONS! This means that you are one step closer to an awesome experience at one of Spanish Trail Scout Reservation's themed weekend adventures. In the following pages you will find more detailed information on your event, how to register, how to prepare for your adventure, and what to expect when you get here.

If you have any questions about the information contained in this Guide, please contact:

Specific Event Information:

Each event has a volunteer event director that should be listed in the registration link on the www.scoutingevent.com/773 website. If you want to help volunteer at an event, please reach out to the event director. Since most events do have limited capacity, **Please** register EARLY! This will save you money as well as ensure that your spot is reserved.

Lion and Tiger Growl Event Director:

Jeff Bennet, cubscoutleader602@yahoo.com, 850-982-5443

Wade Hartley, VP of Programs, wade.l.hartley@gmail.com

General Camp Information:

Chris Sams, STSR Operations Director, chris.sams@scouting.org, 850-516-0735 cell



Table of Contents

General Camp Information

3	Camp Overview
3	Campsites
4	Check - In
5	Parking
6	Camp Safety
7	Health Services
8	Food Services
8	Trading Post
9	Rules and Regs
10	Trash Disposal
10	Fishing
10	Wildlife
13	Recommended Supplies/What to Bring
14	Cancellation Policy & Refunds
15	Campsite Map
16	Parking Lot Map
17	Contact Us

Camp Overview

For over 60 years, SPANISH TRAIL SCOUT RESERVATION has been called home to thousands of Scouts of all ages. It is a rustic 1264-acre hidden gem just north of some of the most beautiful white sand beaches that the Florida Gulf Coast Panhandle has to offer. It's located 70 miles northeast of Pensacola Beach, 60 miles northwest of Panama City Beach, 40 miles northeast of Destin Beach, in a city called DeFuniak Springs.

Camp Euchee is a Nationally Accredited traditional style camp located on STSR with a full-service dining hall, trading post, health lodge, central shower house, radio station, shotgun, rifle, and archery ranges, campfire amphitheater, parade field with flag poles, large activity field, full sized water front for swimming, row boats, and canoes, lots of fishing spots, a Chapel, many program buildings and pavilions, and 10 campsites. Everything is within a ~10 min walk through our various trails.

Campsites

The 10 campsites are equipped with a couple campfire rings, a few picnic tables, a drop style latrine with a water spigot, two showers, and hand wash sink.



Work together with your Pack so each of you might select the same campsite preference during online registration. Your campsite assignment should be emailed to you by Thursday, the day before your event. It will also be given to you at check-in. Cub Scout families and Packs who Pre-register will be kept together in the same campsite. If you register late or at the event, we will do our best to assign you to the same site with your unit.

At virtually every event, you will be sharing your campsite with others. When setting up camp, please be considerate to others and do not pitch your tent in pathways to the rest rooms, within 5ft of a road, nor in trails, and make sure it is **20ft away from all fire rings**. Participants within the same unit are advised to pitch tents closer together when events are at higher capacities in order to make room for others.

The size and number of Packs attending has a significant bearing on campsite assignments. Requests for **participants with special needs** should be submitted in comment section on our Online Registration System at least 2 weeks prior to your arrival at camp.

STSR will only acknowledge and attempt to honor special campsite requests that are submitted into the Online Registration System under “Medical Concerns” in the Event Registration. Please include the specific reason for us to consider, such as “youth with mobility issue due to surgery”. Only Seminole and Sioux campsites have a power outlet at this time.

Check- In

Check in for all events is at Henson Hall on Friday from 4:00-8:00pm and will open again on Saturday morning at 7:30 – 9:00am. **Make sure you bring your QR code that you got when you registered, that will speed things up greatly!!!** You will be given wristbands, meal wrist bands, pre-ordered t-shirts, schedules, and any other items you may need at this time – or be told where to report to gather one or all these items.

If you are arriving after 8pm, please go to your assigned campsite (found in your registration by Thursday before the event), drop your gear and park your vehicle in the main parking lot. Then come to the check-in station in the morning to check in and receive wristbands and other materials needed for the weekend. Make sure you put on your meal wrist bands when they are handed out.

Parking

Camper vehicles belong in the **3 Parking Lots ONLY!** Camp reserves the right to have the vehicle **towed at the owner's risk and expense**, without prior notice. Parking on grass, trail roads, next to buildings or in any area other than the 3 designated parking lots is **prohibited**. We must maintain clearance for emergency personal and vehicles throughout camp. This can be done if everyone uses the parking lots. **Do NOT Leave your vehicle in, near, nor across the road, of your campsite. USE the Parking Lots!**

PACK TRAILERS

Trailers may be parked in campsites or in other areas designated by the Commissioners. Trailers must be **disconnected from the tow vehicle and the tow vehicle parked in a designated parking space**. Trailer wheels must be chocked and the tongue must be secured on a block or stand such that the trailer is safe, secure and does not block roads or trails. We cannot allow a tow vehicle to stay in a campsite with the trailer. Note: Trailers that cannot be removed from the tow vehicle will be parked with the tow vehicle in an area designated by the Ranger.

MEDICAL EXCEPTIONS & GOLF CARTS

The camp will consider allowing individuals with unique medical challenges the opportunity to bring a golf cart. This requires advance permission from the Camp Director. As per NCAP National Policy, **ALL**



Golf Carts must carry a fire extinguisher and First Aid kit on board or they will **NOT** be allowed on property. All drivers must be at least 21 years old. **STAY ON THE ROAD.** The camp wide maximum speed limit is 10 mph. Pedestrians have the right of way at all times.

Private Vehicles are not to be driven around camp during the event.

Please see the camp director if there is someone in your Pack with a special need.

Camp Safety

First and foremost, in accordance with Youth Protection policy, ALL participants must attend these events either with a parent or 2-deep leadership.

WHO SHOULD BE AT CAMP

Only registered Scouts and Scouters are to stay in the campsite. Visitors who are not paid registered campers are not allowed to stay in the campsites. If a Scout must leave camp, they are to be under the supervision of an adult leader. Please sign out at the camp office at Henson Hall when departing and upon your return to camp. Visitors must sign in at Henson Hall.

THE BUDDY SYSTEM

The buddy system should be used at all times. The buddy system is a safety measure for all Scouting activities. Buddies should know and be comfortable with each other. Self-selection with no more than two years age or significant differences in maturity should be strongly encouraged.

LOST OR MISSING SCOUT

If a youth is believed to be missing, Adult Leaders should first confirm that the youth is not in the campsite, program or activity areas, or other common gathering places about camp, then if not found, escalate to the Staff.

CAMP WIDE EMERGENCY

If there is a camp wide emergency, a wailing (air raid) siren and Dining Hall bell will sound. If you hear this, everyone, regardless of where you are in camp, must immediately proceed to the Flag Pole parade ground outside of the Dining Hall and await further instructions from Camp Staff.

Health Services

Hand Washing

To prevent camp illnesses, everyone should wash / sanitize their hands prior to each meal. Hand washing sinks and sanitizing stations are located at bathrooms on the side of the Dining Hall.

Health Lodge

The Health Lodge is located to the left of the Trading Post and will be at virtually all Short-Term Camping Events. The Health Lodge has a qualified Health Officer and medical equipment to handle all minor injuries, scrapes, bruises, etc. Any person with a serious injury or severe illness will be referred to the emergency room of the local hospital.

Your Pack's first aid kit should have up-to-date materials for minor first aid treatments. Please handle small injuries, scratches, nicks, etc. within your Pack. Visit the health lodge if you feel you need medical assistance. If you feel you need to call 911, please do not hesitate to do so, but then send someone to the Health Lodge to report the incident.



Evening / Overnight Emergencies

Should you have an emergency overnight/after office hours, you must report it to the health lodge. If you feel 911 is warranted, please do not hesitate to call them FIRST and then send someone to the Health Lodge to inform the Health Officer. This will allow the Health Officer to ensure that the camp gate is open for the First Responders and allows him/her to assist with the situation.

Food Services

The Dining Hall serves cafeteria-style meals utilizing 1 or 2 serving lines to expedite service. One waiter will be needed for each table. Each den is expected to thoroughly clean their area after each meal. This includes throwing out all trash and wiping down tables. Waiters are not to leave until dismissed by the Dining Hall Steward.

If you have special dietary needs that cannot be met within the realm of the camp menu, you will need to bring appropriate substitutions with you. We find it is easier on the scout and the kitchen staff if the dietary needs are significant, that complete, frozen meals be provided which can be microwaved. If the need requires substitutions (IE Non-dairy milk versus milk) we will have a special refrigerator in the dining hall where scouts can store their ingredients and access them at will. We ask that unit leaders take a lead role in ensuring that the proper substitutions are made for those scouts in their units with dietary needs.

Trading Post

STSR has its own Trading Post where Cub Scouts can purchase various kits, T-Shirts, candy bars, drinks, pocket knives, etc. They accept cash and credit card. Make sure to try a slushy!



Lost and Found box is located on the front porch of the Trading Post.

Rules and Regs

EXPECTATATIONS OF PACK ADULTS

- Vehicles belong in the **3 Parking Lots ONLY!** Do NOT Leave your vehicle in, near, nor across the road, of your campsite. **USE the Parking Lots! Unload and return vehicle to a parking lot, THEN go back and setup camp.**
- Monitor their Scout's behavior at all times, that **INCLUDES** at the GaGa Pit.
- Know where their Scouts are at all times.
- Sit at the same table with their group of Scouts at all meals.
- Assist Camp Staff when requested.
- Observe the No Smoking No Vaping Policy of the BSA.
- Having the Pack arrive as a group helps registration flow much faster.
- Clean your campsite completely and dispose of all trash at end of the event in the appropriate dumpster.
- Set the example by following the Scout Oath and Law.
- Follow and help reinforce all camp policies, rules, and reminders.

NO TOBACCO, ALCOHOL, AND DRUGS

In accordance with BSA policy. STSR is a smoke-free camp. Tobacco is not permitted in camp. Alcohol and non-prescribed drugs are prohibited. This also includes electronic cigarettes

We encourage everyone to **REGISTER EARLY!** for several reasons.

1. Many of these events are quite popular and will sell out
2. Registering early will save you \$\$\$!
3. Event T-shirts cost less when pre-ordered and is the only guarantee that you will receive a shirt. T-shirts are available in the Trading Post at the event, but supply is very limited.

If your unit is not planning to come to any of these events, you can attend as a family. All participants must attend these events with either a parent(s) or two deep leadership.

TRASH

You are responsible for your trash. The Boy Scouts of America lives by a Leave No Trace philosophy. We teach all Scouts to respect the outdoors and take care of our precious lands. Please keep in mind, trash (even trash in bags) will attract wildlife. Please do NOT leave trash in your campsites. Please take your trash to one of the two dumpsters located at the dining hall or the main parking lot. Do Not over flow a dumpster. Thank you!

FISHING

Must use the Buddy System at all times. Fishing is NOT PERMITTED off ANY Waterfront Dock nor within 50 yds. from the boat or swimming area. Fishing from the Dam and the floating bridge is permitted if 50 yds. away from the boat or swimming area. You must bring your own bait and gear. There are some pole that can be checked out by the event leader. Fish caught at camp may be eaten or released back into the water.

PETS

Pets are to be left at home (Exception - those assisting individuals with special needs **and have been pre-approved prior by the Camp Director**). Pets of any type are not permitted by BSA policy. Our camp has plenty of wildlife (rabbit, snakes, squirrels, etc.)

WILDLIFE WARNING

DO NOT MESS WITH THE TURTLES!! They are Federally protected!

Please respect our wildlife and enjoy watching from a distance. We share camp with deer, racoons, squirrels, and many other types of wildlife. Please keep food and drinks stored properly in a vehicle or trailer and make sure trash is disposed of properly.

BE BUG AWARE, TOO! Our camp is home to ticks, chiggers and yes mosquitoes. Stay out of long grass, wear long pants when in deep woods, and check for ticks daily! (Have a parent/guardian check their child.) Use bug spray (preferably non-aerosol).

CAMP SAFETY POLICIES

- No fireworks of any kind are permitted on camp property.
- No flames, fires, or fuels of any kind are permitted inside tents.
- All flames are to be 20 ft away from all tents and buildings.
- ALL FIRES MUST have a FULL Bucket of water beside it. Fires must stay in the fire ring. Tents and shelters must be 20 feet away from all fires.
- Do not use any liquid propellant on fires.
- Each Fire ring is meant to be shared with any other unit sharing your campsite.
- Throwing rocks is strictly forbidden.
- DO NOT Clean dishes in or around ANY Bath house or Latrine!
- No running in camp. We ask adult and youth leaders to help keep camp safe.
- Personal firearms and bows are not permitted, please leave them at home.
- All vehicles must be parked in the designated camp parking areas. Only authorized vehicles are allowed in campsites or on the roads. Closed-toed shoes with covered heels must be worn at STSR. You can swap to your shower or water shoes once you get in the shower house or waterfront.
- NO Pets - Pets are not allowed in camp at any time except those aiding the disabled and have been approved by Camp Director
- Sheath Knives – Camp policy restricts the carrying of sheath knives. Leave them at home.
No LASER (pens/pointers) of any kind are permitted in camp.
- All guests are required to immediately check-in at the Camp Office.
- Refer to the Boy Scouts of America Guide to Safe Scouting for additional policies.



TALENT RELEASE / CONSENT GIVEN

During camp, it is possible that photographs or recordings of camp participants might be taken. These photos might be used in camp promotion and report items, council publications or possibly region or national publications. No individual Scout will be identified in any of these photos without permission. By default, attendees at camp grant the local council and the Boy Scouts of America the right and permission to use and publish the photographs/ film/ videotapes/ electronic representations and/or sound recordings made of me or my child by the Boy Scouts of America, and I hereby release the Boy Scouts of America from any and all liability from such use and publication. Camp participants hereby authorize the reproduction, sale, copyright, exhibit, broadcast, electronic storage, and/or distribution of said photographs/ film/ videotapes/ electronic representations and/or sound recordings without limitation at the discretion of the Boy Scouts of America, and they specifically waive any right to any compensation that they may have for any of the foregoing. If you do not agree with the above paragraph, or if you desire that your Scout or a Leader not be photographed or recorded while at camp, you must request (in writing) that we refrain from this activity. Please be prepared to turn in the written request naming that individual during check in.

Recommended Supplies

Camping Gear

- Waterproof Tent with waterproof ground cover (tarp or piece of plastic sheeting the size of your tent floor)
- Sleeping bag & pad/blankets/Pillow
- Flashlight with extra batteries
- Toiletries (hand soap, shampoo, toothpaste/brush, TP, etc.)
- Towel/washcloth

Cooking:

- If you did not purchase meal plan options then you will need to provide your own food and means to cook, clean, eat, and store it.
- Trash Bags
- Dish Liquid, cloth, and towel/paper towels and tubs to wash your dishes in.
- Cooler with ice

General

- Clothing appropriate for the event/weather - including bathing suit
- Field Uniforms ("Class A") for Flag Ceremony
- Sweater/Jacket/**Rain Gear**
- Waterproof Sunscreen
- Insect Repellent (preferably non-aerosols)
- First Aid Kit, Watch, Pad and Pen
- Hand sanitizer
- Hat
- Closed toed shoes
- Day Backpack
- Water Bottle – **bottle** (LABELED with NAME) – MANDATORY
- BSA Health Form – Parts A & B - keep these with you!

**Do NOT Bring the Following:
Firearms, fireworks, ammunition, bows, sheath knives,
handheld video games or pets.**



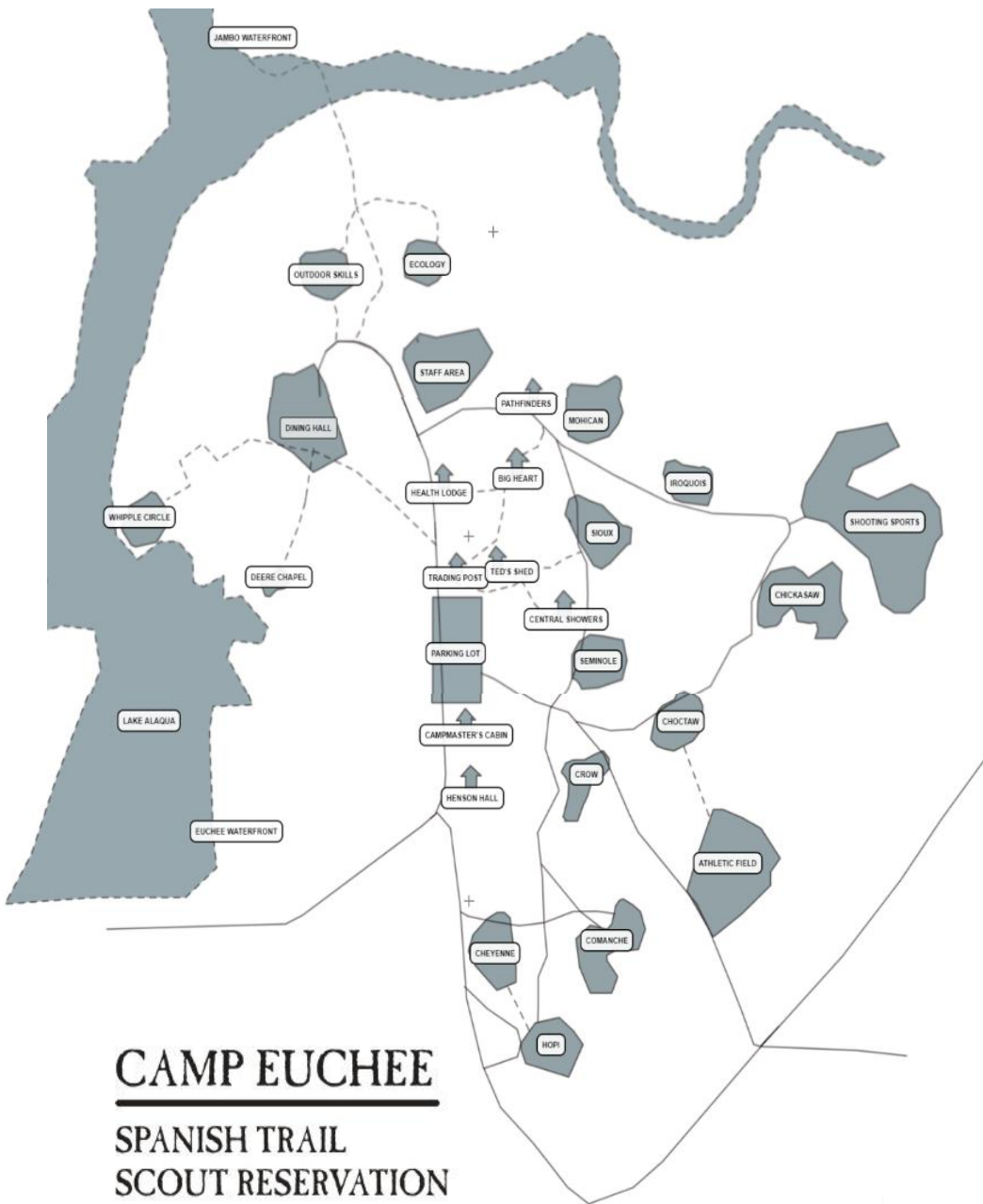
Cancellations and Refunds

As of 1/1/23:

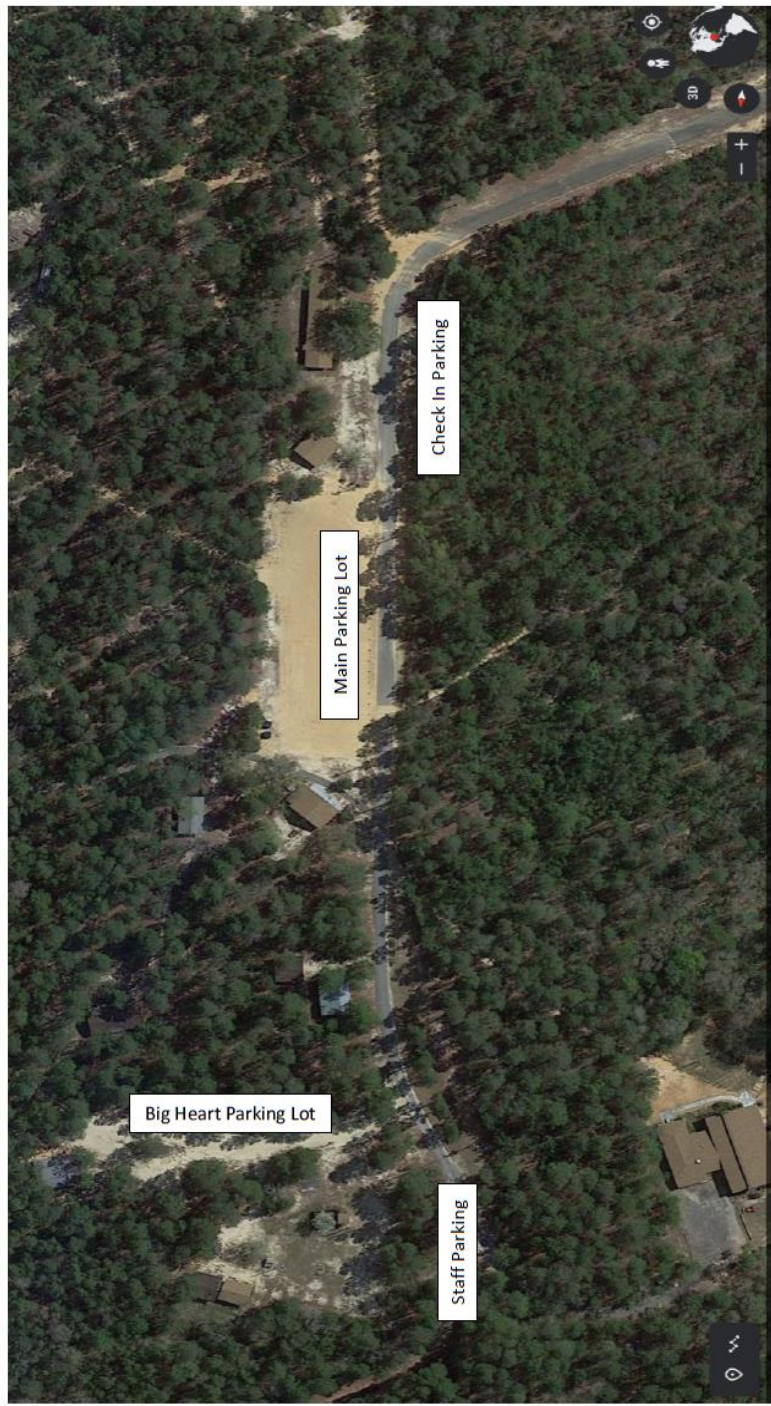
30 Days prior is full refund. Anything between 2 weeks and 30 days is 50% refund. Within 2 weeks of the event refund is at the discretion of the event coordinator or staff advisor. Usually only granted in cases of emergency. Unless otherwise stated.



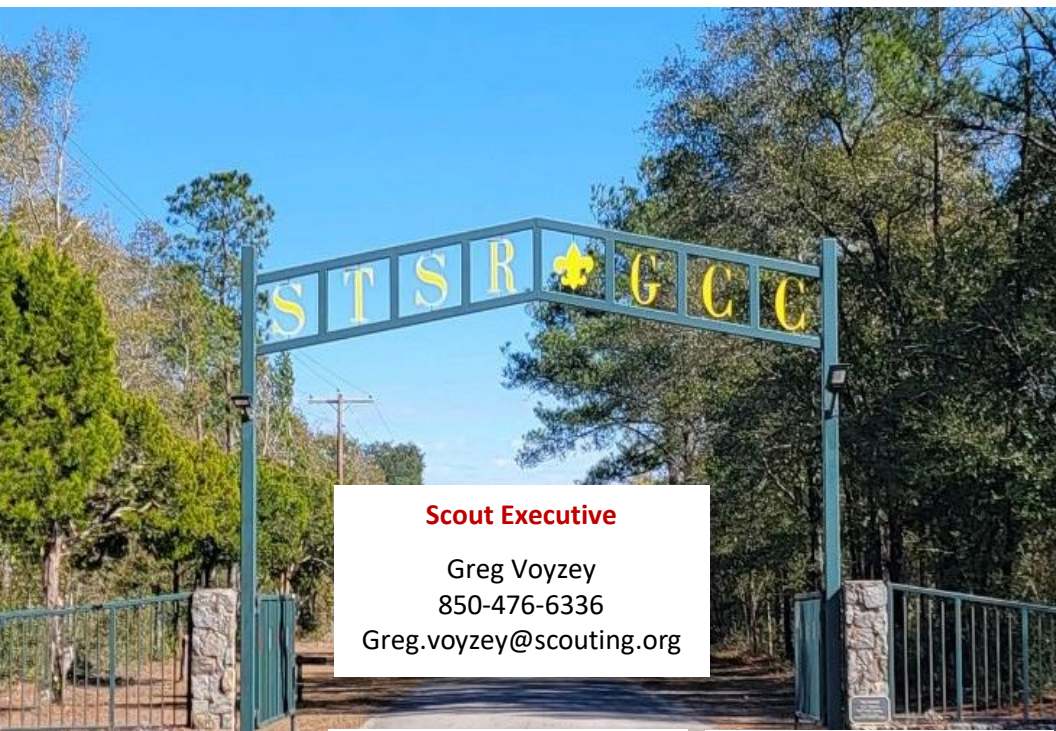
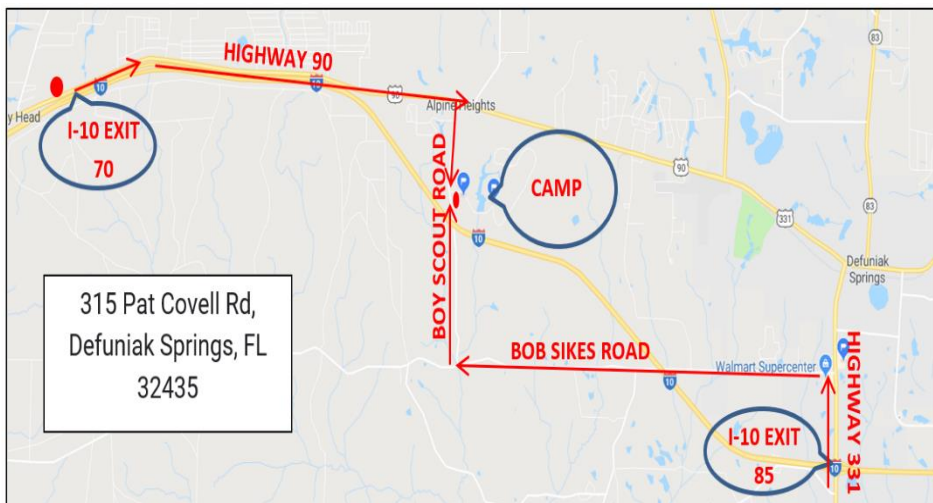
Campsite Map



Spanish Trail Scout Reservation Parking Map



Vehicles belong in the 3 Parking Lots ONLY! Camp reserves the right to have the vehicle towed at the owner's risk and expense, without prior notice. Parking on grass, trail roads, next to buildings or in any area other than the 3 designated parking lots is prohibited. We must maintain clearance for emergency personal and vehicles throughout camp. This can be done if everyone uses the parking lots. **Do NOT Leave your vehicle in, near, nor across the road, of your campsite.** USE the Parking Lots and **Please don't parallel park!** It takes up too much room.



Scout Executive

Greg Voyzey
850-476-6336
Greg.voyzey@scouting.org

Council Office

Gulf Coast Council
940 University Pkwy
Pensacola, FL 32514
www.stsr-gcc.org

Camp Fees & Registration

Council Office
850-476-6336
www.Scoutingevent/773

STSR Operations Director

850-516-0735
Chris.sams@scouting.org