

Summer Merit Badge Camp 2025 Program Guide

Contents

Location	4
Google Maps Link	4
Roads	4
Transportation	4
Proximity Map	4
2025 Summer Merit Badge Camp Dates & Fees	5
Camp Fees	5
Payment Schedule	5
Refund Policy	5
Arrival at Camp	5
Departing Camp	5
Camp Information	6
Housing Facilities	6
Trading Post	7
Dining Hall & Meals	7
Uniforms	7
Adult Leadership & Maverick Units	
Program	8
Trail to First Class (TFC)	8
Program Fees	8
Merit Badge Offerings	8
Evening Programs	9
Astronomy, Chess, Cycling & Climbing Merit Badges	9
Branding	9
Adult Specific Opportunities	9
Schedule	10



Located in Post, Texas, C.W. Post Memorial Scout Camp is nestled between ravines of the West Texas Caprock System. With its western theme, the camp offers an adventure for every Scout. Through various outdoor activities and programs Scouts can discover adventure in the Great Plains.

Camp Post offers a range of activities for adventure seeking Scouts including mountain biking, climbing, swimming in a 135,000 gallon pool, archery and shooting shotguns in our stellar shooting sports program. Come beat the summer heat! Scouts of all ages can find adventure and advancement at Camp Post.



Location

From Lubbock, take US highway 84 to the center of Post.

Turn west on US highway 380 (W. 8th St.) and begin looking for the sign to Camp Post, BSA. Turn south at this sign onto state highway 669 (S. Avenue M), which is three blocks west of US highway 84.

Travel along highway 669 for two miles and turn right at the sign for Camp Post.

Google Maps Link

Click [here](#) to view camp in Google Maps and get directions from your hometown!

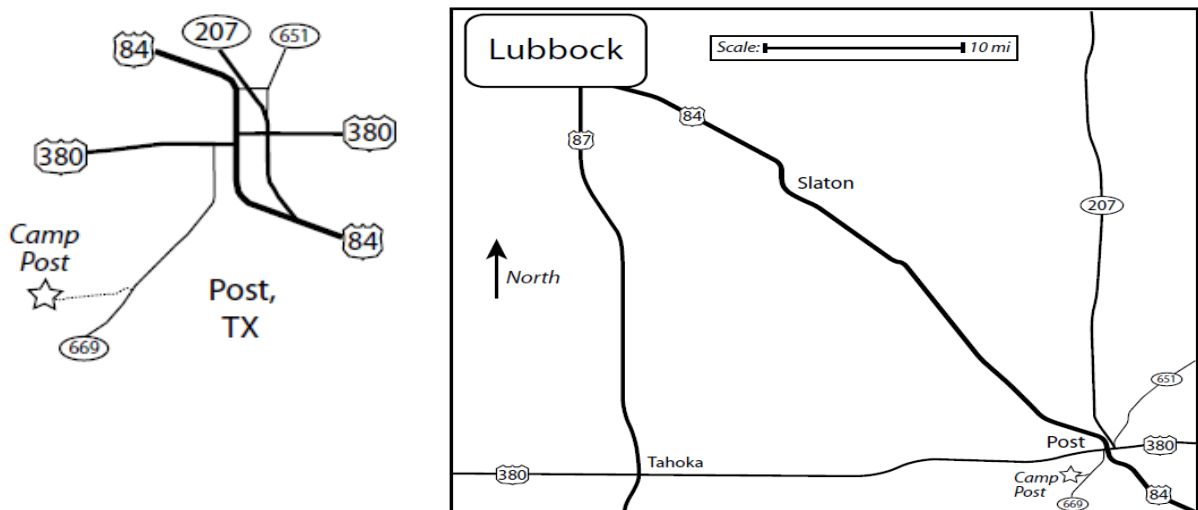
Roads

99% of roads leading to camp are state or interstate highways. The final 1/8 mile is a historic road and easement. This road is typically well maintained by the county, but can be bumpy, especially after heavy rainfall. There is also a low dip and ravine that can be impassible in severely inclement weather. In that case, we will make arrangements for parking and transporting gear.

Transportation

Each troop is responsible for transportation to and from camp. Please condense the number of vehicles brought to camp.

Proximity Map



2025 Summer Merit Badge Camp Dates

Camp Week	June 23 – June 26
-----------	-------------------

Camp Fees

We want everyone to be able to come to camp, so we have kept our rates low again for 2025. Deposit and fees can be paid at: <https://scoutingevent.com/694-2025camppost>

- Youth - \$250
- Adults - \$150

Refund Policy

Refunds are issued due to accident, illness, death in the immediate family or family relocation. "No Shows" will not receive a refund.

Refunds will **NOT** be available **after the June 1st** due date for units or individuals unable to attend camp.

Please contact our Scout Executive, Nathan Baie at Nathan.Baie@scouting.org if you have any questions about refunds.

Arrival at Camp

Arrival at camp will be Monday, June 23rd. Check in will be from 7:30am-8:30am. Please eat breakfast before arrival. Flags will be at 8:30am.

The sooner you arrive, the easier it'll be to get you set up into your bunkhouse before Merit Badge program begins, which will be promptly at 9:00am.

Departing Camp

Camp will end at 5:30pm on Thursday, June 26th. Please remember to check out at the Camp Office and collect your Med Forms from the Camp Medic.

Camp Information

Housing Facilities

Camp Post has two bunkhouses and an additional building called the Scout Master Hut as housing. All three buildings have air-conditioning. The East Bunkhouse has several rooms, with two bunk beds each. This building will be for Adult and Youth Females. The West Bunkhouse is open concept with several bunk beds. This building will be for Youth Males. The Scout Master Hut will be for Adult Males, and cots will be provided, or you may bring your own. There are bathrooms and showers across from the bunkhouses; however, there is no bathroom at the Scout Master Hut, but a porta-potty will be provided.



Trading Post

The Trading Post will have a fully stocked inventory of great camp merchandise. We will carry items including cold drinks, water bottles, candy, scouting items, t-shirts, merit badge books, as well as grooming and hygiene items. It is recommended for Scouts to bring about \$50-100 for the Trading Post. (Credit/Debit cards are accepted)



Dining Hall and Meals

All meals are served in the dining hall, cafeteria style. Units will assemble at the flag poles then we will dismiss for meals by unit or some other grouping.

Servers, Dishwashers & Kitchen Staff Volunteers

We will have staff working the kitchen and can always use the help with maintaining the cleanliness of our Dining Hall (cleaning off tables, taking out trash, sweeping, etc). Please feel free to offer to help if time allows!

Uniforms

The average temperature of Post, Texas in June ranges between min 71.2°F (21.8°C) and max 93°F (33.9°C). With that in mind, Troops will be permitted to wear whatever they deem as comfortable for their uniforms, whether that be matching Troop t-shirts or UPF shirts with some sort of light-weight, breathable shorts or the official Scouting America field uniform. The STAFF will be in a Magellan type breathable, UPF fishing shirt and khaki or green shorts.

Adult Leadership & Maverick Units

In Scouting America, “Maverick” or provisional Scouts are individuals attending Camp without their home unit. Here are the leadership requirements we would need to follow:

- **Two-Deep Leadership:** Scouting America mandates at least two registered adult leaders aged 21 or over present at all times. For attending youth females, we will need at least one female adult leader over age 21.
- **Combining Units:** If a troop cannot provide the required two adult leaders, we may arrange to combine units. This collaboration helps maintain the necessary two-deep leadership and ensures all Scouts can participate safely.
- **Adult Leadership Requirements:** All adults attending camp must be registered Scouting America members with current Youth Protection Training (YPT) certification.

Program

Trail to First Class (TFC)

Camp Post will offer a robust Trail to First Class program. We offer both a morning session and an afternoon session, along with opportunities to earn the Totin' Chip and Firem'n Chit in the evenings. Your Scouts will also get to enroll in two additional merit badges.

Program Fees

Some merit badges have additional fees for required materials. These materials are available at camp from the Trading Post. These merit badges would include:

- Leatherwork \$15

Merit Badge Offerings *(subject to change based on staffing and are first-come, first-serve)*

All the classics with a few extras thrown in! Camp Post offers Eagle required and non-required badges, but most importantly, we offer a fun learning experience at camp!

Areas	Merit Badge
ScoutCraft	Camping (Eagle)
	First Aid (Eagle)
	Swimming (Eagle)
	Climbing
	Pioneering
Nature	Astronomy
	Indian Lore
Handicraft	Pottery or Art
	Leatherwork
Other	Chess
	Motorboating (Both 3 Hour Sessions)
	Cycling (Eagle)
Shooting Sports	Archery
	Shotgun
Trail to First Class	TFC (Both 3 Hour Sessions)

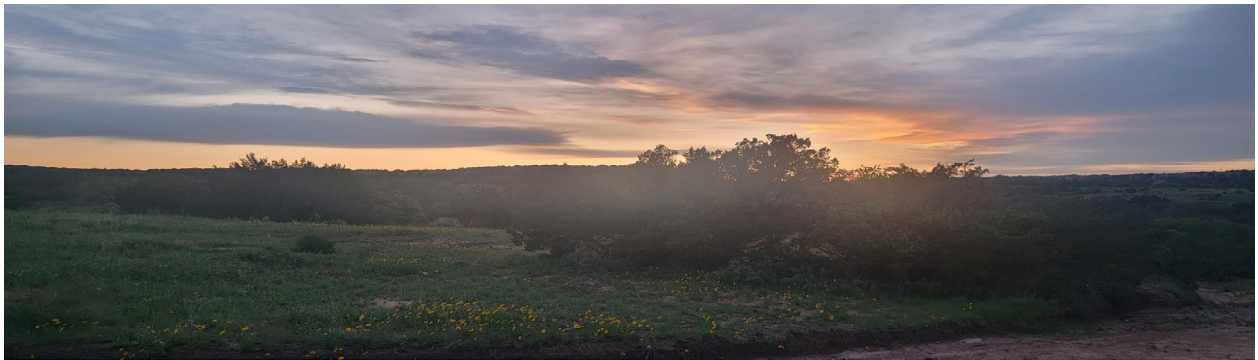
Registration for Merit Badges will open May 16, 2025.

Evening Programs

Our evening programs will be the Climbing, Cycling, Chess, and Astronomy merit badges. Each evening we will be offering the opportunity to participate in these merit badges once the sun goes down, and it's not as hot. Ever climb a tower by spotlight? Ever bike the South Ridge of Camp by headlamp? With little light pollution, and vast openness, you can see the stars from all directions for Astronomy. Camp Post is the perfect setting for some stargazing! Or relax and learn about the great game of Chess!

Branding¹

The Currycomb brand is known far and wide across West Texas, New Mexico, and Oklahoma. Show your friends that you visited beautiful Camp Post by having your items branded.



Adult Specific Opportunities

Adults get to have fun too! We have a few adult-specific activities planned to keep all of our fine unit leaders engaged.

- Scoutmaster Coffee – Daily in the Dining Hall. Come at sunrise for the perfect view!
- Yard Games
- Quiet time in your campsite, or enjoying the rocking chairs on the front porch of the Dining Hall

¹ Branding is only suitable for certain resilient materials. We do not recommend branding anything thin, meltable, or living. Available program after Friday Closing Campfire.

Schedule

Merit badges sessions will be offered Monday – Thursday.
The schedule below is an example of a typical day at Camp Post.

TIME	Activity
7:00 AM	Breakfast
8:30 AM	Morning Flags
9:00 AM	Trading Post Open until 5pm
9:00 AM	Session 1
10:30 AM	Session 2
12:00 PM	Lunch
1:30 PM	Session 3
3:00 PM	Session 4
5:00 PM	Evening Flags
5:15 PM	SPL Meeting
5:30 PM	Dinner
7:00 PM	Climbing or Cycling
7:00 PM	Trading Post Open Until 9pm
9:00 PM	Astronomy or Chess
10:00 PM	Lights Out