



Parents' Guide

Friday-Sunday, October 11-13, 2024

Fall Cub Camp – C.W. Post Memorial Scout Camp – Post, TX

Table of Contents

Welcome to Fall Cub Camp (Boo! Camp)	2
Event Registration	3
BSA Annual Health and Medical Record (Required)	3
Refund Policy	3
Arrival	4
Group Assignments.....	4
Meals / Dietary Needs	4
Health Lodge / Camp Office.	4
Participant Care.....	5
Water.....	5
Bathrooms.....	5
Camp Attire.....	5
Lost Youth.....	5
Lost & Found.....	5
Parking.....	5
Costume Photo Site	5
Trading Post	6
Spooky Spectacles	6
Schedule	8
Wildlife Safety	9
Leaving Camp / Check Out	9
Tips for Cub Camp	9
Cub Scout Six Essentials	9
What to Bring Checklist	10
Items Not to Bring	10
Items Not Allowed	10
Directions to Camp & Camp Map	11

Welcome to Fall Cub Camp

Welcome to Fall Cub Camp

We want your family to have an amazing outdoor experience. We are volunteers from South Plains Council, and we are honored to be coordinating Fall Cub Camp, Boo! Camp, for Cub Scouts.

C.W. Post Memorial Scout Camp

Located in Post, Texas, C.W. Post Memorial Scout Camp is nestled between rugged ravines and scenic hiking trails, and features a variety of outdoor activities. Located on the edge of the West Texas Caprock system, Camp Post's Western Theme is full of amazing landscapes and fun things to try!

Scout Fun

This Fall Cub Camp will be a great outdoor experience for all while enjoying Halloween themed activities around camp, lunch in the Dining Hall, and to top it off, a spooky campfire at our Council Fire Ring!

You can learn more about what makes Fall Cub Camp, Boo! Camp, special in our easy-to-follow Parents' Guide. Any questions, please email sonja.morton@scouting.org. This email is monitored every business day. We look forward to seeing you in the great outdoors!

Yours in Scouting,

Josh Nichols – Activities & Civic Service District Committee Chair

Jennifer Nichols – Volunteer

Clyde Shannon – Volunteer

Tori Apel – Volunteer

Sammie Shaw – Commissary Staff Lead

Sonja Morton – Council Program Director



BSA MISSION STATEMENT

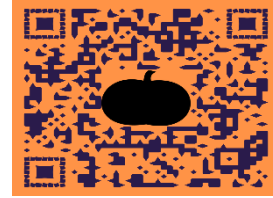
The mission of Scouting America is to prepare young people to make ethical and moral choices over their lifetimes by instilling in them the values of the Scout Oath and Law.

Registration

We want to thank you for taking the time to explore the official 2024 Fall Cub Camp Parents' Guide, a resource providing essential information to help you plan and prepare for an unforgettable outdoor experience. We strongly encourage all adults attending camp to read this guide in its entirety. For your convenience, the latest version of this document is always available at southplainscouncil.org – Fall Cub Camp – Registration.

Event Registration

Register at southplainscouncil.org – Fall Cub Camp
<https://scoutingevent.com/694-2024fallcubcamp> OR
bit.ly/2024boocamp



Please be sure to fill out the entire registration form with your contact information, participant information, Pack #, dietary needs and special needs. Please also include information on:

- Scout Rank – Please include your Scout's current rank (grade)

This information will help us to provide your family with a great experience. Within the family registration, youth must be accompanied by at least one parent or an adult family member (over 21 years of age). This event is subject to weather conditions.

BSA Annual Health and Medical Record (Required)

This event **does not** require a medical professional signature on the Annual Health and Medical form.

On arrival to camp, all attendees (scouts, adult leaders, and staff members), must submit a BSA Annual Health and Medical Record – Part A, B1 & B2 with immunization records written on B2 or attached and a copy of the family insurance card. The health form used for all scouting events is on the BSA website at:

[Annual Health and Medical Record – Scouting America \(scouting.org\)](https://www.scouting.org/health-and-safety/ahmr/)
www.scouting.org/health-and-safety/ahmr/

This record is provided as a fillable PDF, and members are encouraged to fill it out on their computer, then print the record (rather than printing the record and filling it out by hand). Doing this will improve the readability and accuracy of each member's medical information.

Refund Policy

Refunds must be requested by email to Nathan.Baie@scouting.org and need to include the following information: First and Last Name, Unit Number, and Reason for Request.

For this event, the refund policy is:

0 – 10 days	0%
11-30 days.....	50%
31+ days	100%

Refund requests received after a program has begun will be considered if there are extraordinary circumstances and the maximum refund will be 50%. Examples include: documented medical reason (doctor's note required), a death in the immediate family, or a natural disaster. No refund requests will be accepted after ten (10) days following the end of the applicable activity.

Approved refunds will be processed within thirty (30) days of their receipt in writing and made either by check or by credit card reversal, at the discretion of the council staff, to the original payer for individual registrations or the unit, in care of the reservation contact, for group reservations.

Your Visit to C.W. Post Memorial Scout Camp

Arrival

On Friday evening, check-in is from 6:00 pm to 8:00 pm. Please eat dinner prior to arrival. We will have a Night Hike beginning at 8:00pm. Saturday morning, check in and breakfast is from 7:30 a.m. to 8:30 a.m. The main parking lot is directly in front of the Camp Office. Please park in the main parking lot. To check-in, you will need to go to the Camp Office and please bring your medical forms for each participant.

At Check-In you will receive

- ❖ Your Group Assignment
- ❖ A Schedule of Events
- ❖ A Map of Camp
- ❖ Meals – Food Allergy/Dietary Restrictions Card (*if applicable*)

Group Assignments

Whenever possible, participants from the same Pack will be grouped together so be sure to include your Pack number during the registration process.

Meals/Dietary Needs

All meals are provided in our camp Dining Hall. For Fall Cub Camp we will service cracker barrel on Friday evening, breakfast, lunch and dinner on Saturday, and breakfast on Sunday. There will be drinking water stations set up around camp. Additional snacks, treats and drinks will be available for purchase in the Trading Post.

Participants with special dietary needs, including allergies, must be noted during the online registration process so the proper accommodations can be made. You will receive your food allergy / dietary restrictions card at check-in. We will try to accommodate dietary needs as much as possible.

Medic Lodge

The Medic Lodge is staffed 24 hours a day by qualified medical personnel. For insurance purposes and for the health and safety of all participants, all accidents and illnesses must be reported to the Medic Lodge and recorded. Arrangements have been made with local rescue squads and hospitals to handle any medical emergencies.

Participant Care

C.W. Post Memorial Scout Camp can average a high of 74.8°F (23.8°C) and a low of 54.5°F (12.5°C) in October. It is important that everyone **drinks lots of water** and stays hydrated.

It's vital for every person to wash their hands regularly. All participants are required to wash their hands before meals.

Water

All stations will have drinking water as well as water in the Dining Hall.

Bathrooms

Bathrooms are located to the left of the parking lot. They are stocked with toilet paper, paper towels and hand soap. If you run out of any of these, please notify a staff member. Please throw all trash in the trash cans provided. All feminine products should also go in the trash. Please turn off the lights and close the door behind you when you're done. This helps to keep the bugs and other critters out of the bathrooms.

Camp Attire – Pack shirt or costume

Staff will be wearing navy blue “STAFF” shirts, in order to be recognizable to participants.

During the day, a Scout t-shirt and Scout shorts or pants are great. For non-Scouting America members, we ask that attire be family appropriate and conservative.

For Cub Scouts, a Scout uniform, field uniform, or Class A, is not necessary for this event.

Lost Youth

Lost youth will be escorted to the Medic Lodge and camp staff will be notified to help reunite the child with their family.

Lost & Found

Lost and found is located at the Camp Office. Any items left at camp will be kept for two more weeks and then donated or thrown away. After the event, please contact camping@southplainscouncil.org regarding any lost items.

Parking

The main parking lot is directly in front of the Camp Office. Please park in the main parking lot.

Costume Photo Site & Trunk or Treat

We have created a cool Halloween backdrop where all of our Ghosts and Ghouls can take their pictures to remember this wonderful outing! Please share to the Camp Post FB Page!

<https://www.facebook.com/camppost> #2024boocamp. There will be a contest and we will announce the winners at Campfire!

We will also have Youth Summer Camp Staff set up a Trunk or Treat in the back parking lot, closest to the Livery Stable.

Trading Post

The staff has worked hard to fill the Trading Post with snacks, drinks and treasures. Please be sure to stop by and visit. Proceeds will benefit the South Plains Council and future events like these.

Thank you for your support!

This is also where you'll paint and decorate your very own pumpkin for the Pumpkin Decorating activity! Post pictures to remember this wonderful outing! Please share to the Camp Post FB Page!

<https://www.facebook.com/camppost> #2024boocamp. There will be a contest and we will announce the winners at Campfire!

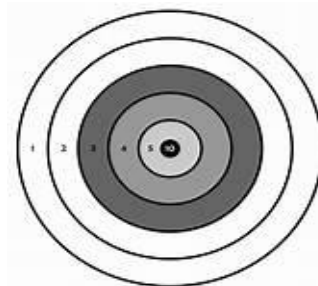
Spooky Spectacles

Along with Trunk or Treat/Costume Contest, there are six other stations. These stations will be set in the Old West Town area, in a round-robin style.



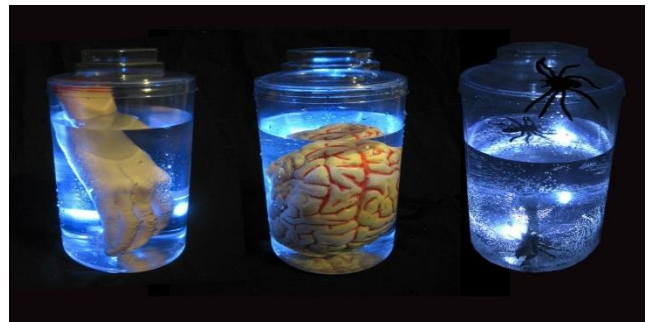
Archery – In a safe and supervised environment, Cub Scouts will learn the fundamentals of this ancient and skillful sport. Under the guidance of experienced instructors, they will learn proper techniques for handling bows, aiming, releasing arrows and potentially earn the Archery Adventure. Find us in the Archery Range!

BB Guns – In a safe and supervised environment, Cub Scouts will learn the fundamentals of range safety, loading, and shooting BB guns at paper targets and/or clays. Under the guidance of experienced instructors, they will learn proper techniques for handling firearms safely and potentially earn the BB Adventure.. **NOTE: Lions may not shoot BB Guns.** They will potentially earn the Slingshot Adventure. Find us in the BB Range!



Run for Your Life! Relay Races – Skills will be tested with Don't Wake the Spider, Zombie Sack Race, and Skeleton Hand Cornhole! Find us by PSC Pavilion and picnic tables!

Eww! Gross! Sensory Station – Try to guess what’s inside using your sense of touch! Get it right, get a treat! Find us in the Camp Office.



Get Out! – Go for a hike! We will have a guided hike to a pre-determined location for you and your Cub Scout. Make sure to bring your Cub Scout 6 Essentials and good walking closed-toe shoes! Find us at the Camp Office Breezeway.

Disguise Your Pumpkin to Save it from Getting Carved!
– Decorate your pumpkin using glow in the dark paints, to disguise it as already carved. Then take it home to enjoy! Find us at the Trading Post.



Rules for the Costume Contest

Remember the Scout Oath and the Scout Law. Costumes must be Scout appropriate. Nothing that promotes the use of illegal substances or activities or is derogatory, disrespectful or depicts violence. Masks and facepaint are acceptable; however, weapons are not (nun chucks/sickles/swords/knives/guns, etc).

Parents and leaders please guide the Scouts.

Scouts will be grouped by rank (Lion, Tigers, Wolf, Bear, Webelos and Arrow of Light). Some groups may be put together, depending on their sizes. We will also have a group for Siblings. At the start of campfire, we will call each group to the stage and introduce their costume. We will have a panel of judges. At the end of campfire the judges will announce a winner from each group.

Friday:

6:00-8:00PM Check-in (Camp Office) and Campsite Setup
8:00-9:00PM Night Hike
9:00-10:00pm Cracker Barrel (Dining Hall)
10:00pm Lights Out

Saturday:

7:30-8:30am Check in (Camp Office)
7:30-8:30am Breakfast (Dining Hall)
8:45am Flag Ceremony (Poles)
9:00-12:00pm Morning Program
12:15pm Lunch (Dining Hall)
1:30-5:30pm Afternoon Program
5:45pm Flag Ceremony
6:00pm Dinner (Dining Hall)
7:15 pm Campfire (Amphitheater)
9:00 pm Cracker Barrel (Dining Hall)
10:00 pm Lights Out

Sunday:

7:30-8:30am Breakfast
9:00-9:30am Scout Service
 Held at Kate's Chapel by Pool
11:00am Camp Closes



	9:00 am	10:00 am	11:00 am	12:15 pm	1:30 pm	2:30 pm	3:30 pm	4:30 pm
Group 1	Relay Races	Sensory Station	Trunk or Treat	Lunch	Hike	Pumpkin Painting	BB	Archery
Group 2	Archery	Relay Races	Sensory Station	Lunch	Trunk or Treat	Hike	Pumpkin Painting	BB
Group 3	BB	Archery	Relay Races	Lunch	Sensory Station	Trunk or Treat	Hike	Pumpkin Painting
Group 4	Pumpkin Painting	BB	Archery	Lunch	Relay Races	Sensory Station	Trunk or Treat	Hike
Group 5	Hike	Pumpkin Painting	BB	Lunch	Archery	Relay Races	Sensory Station	Trunk or Treat
Group 6	Trunk or Treat	Hike	Pumpkin Painting	Lunch	BB	Archery	Relay Races	Sensory Station
Group 7	Sensory Station	Trunk or Treat	Hike	Lunch	Pumpkin Painting	BB	Archery	Relay Races

Locations

PSC Pavilion — Relay Races, Trading Post—Pumpkin Painting/Photo Booth, Office Breezeway—Guided Hike,
Camp Office—Sensory Station, **BB Range**—BB Guns/Slingshots, **Archery Range**- Archery, **Back Parking Lot**—Trunk or Treat

Wildlife Safety

Cub Scouts have an opportunity to observe many types of wildlife that includes rattlesnakes and other snakes, lizards, horned toads, tarantulas and other spiders, raccoons, coyotes and many types of birds and insects. It is wise to remember that these creatures are the permanent residents of camp. Please make sure everyone remembers to:

- ❖ Treat all animals with respect and observe from a distance.
- ❖ Do not follow, feed, tease or handle wildlife.
- ❖ Store all food in a secure place; personal vehicle, or daypack.
- ❖ All trash should be thrown away in a trash receptacle.
- ❖ If you discover a snake or an animal that is behaving strangely, please notify the camp staff immediately.

Leaving Camp / Check Out

Any time you would like to leave camp, please be sure to check-out at the Medic Lodge. It is important we know when you are gone.

At the end of camp, please check-out at the Camp Office. At check-out, your BSA Health Forms will be returned to you. We will also kindly ask that you complete a survey, to help us make Fall Cub Camp better each year. The check-out time will be before 11:00am on Sunday.

Tips for Cub Day

- Please label belongings so we can help get them back to you.
- Check the weather the week prior and day prior to the weekend to be better prepared.
- Bring refillable water bottles to refill at the water stations throughout camp to stay hydrated.

Cub Scout Six Essentials

These are items every Cub Scout should carry in their personal gear when going on hikes or campouts:

1. **First-aid kit:** adhesive bandages, moleskin, gauze, antibiotic ointment, etc
2. **Water bottle:** filled and large enough to last until it can be filled again
3. **Flashlight:** for emergency use only
4. **Trail food:** can be made as a den activity prior to hike or campout
5. **Sun protection:** sunscreen of SPF 30 or greater and a hat
6. **Whistle:** for emergency use only

Source: Aaron on Scouting

By Bryan Wendell [August 8, 2017](#)

<https://blog.scoutingmagazine.org/2017/08/08/cub-scout-six-essentials-half-dozen-items-pack-every-campout-hike/>

What to Bring Checklist

Please label belongings so we can help get them back to you.

Required Documents

- Medical Form – Parts A, B1 & B2 for every participant
- Copy of Family Insurance Card (if applicable)
- Medications (if applicable)

Personal Gear

- Day Pack (**carry stuff during the day**)
- Water Bottle or Hydration System
- Weather appropriate clothing
- Rain Jacket or Poncho
- Hat
- Close-toed Shoes (**no sandals or flip flops allowed outside of the tent or showers**)
- Sunglasses, Sunscreen, Chapstick
- Bug Spray
- Whistle
- Trading Post money (**cash or card**)
- Pocketknife (**if earned**)
- First Aid Kit

Family Equipment

- Wagon (**for taking gear to campsite. Vehicles are not allowed past the parking lot**)
- Tent with Rain Fly and Ground Tarp (Footprint)
- Camp Chair (one per camper)
- Sleeping Bag/Blankets/Pillow
- Air mattress/Cot/Sleeping pad
- Mess kit
- Flashlight or Headlamp
- Extra Clothing/Sleepwear/Socks/Underwear
- Toiletries (Toothpaste/Toothbrush, Shampoo/Body Wash, Deodorant, Hairbrush/Comb, Towels)

Items Not To Bring

Electronic games and devices
Radios, iPods, etc
Matches & Lighters

Laser Pointers
Personal Archery/Shooting Equipment

Items Not Allowed

Fireworks
Alcoholic Beverages or Illegal Drugs
RVs or Travel Trailers

Personal Firearms
Pets
Personal ATVs, Golf Carts, etc.

Use or possession of tobacco products by anyone under the age of 21 is illegal in Texas. All camp buildings are smoke and vaping free. The only authorized location for adult smoking or vaping is the parking lot, your personal vehicle, or behind the Dining Hall if there is no food being cooked.

Directions to C.W. Post Memorial Scout Camp

C.W. Post Memorial Scout Camp is located just outside of the City of Post, TX, at 1730 FM 669. Look for the white stone entrance and flags just off the road. You will follow this road to a red gate and the Ranger's house. Continue on through another set of gates, past the climbing towers, to the parking lot nearest the Camp Office.

