

**Scouting America - Longhorn Council**  
**Worth Ranch, Palo Pinto County, Texas**  
**Emergency Action Plan (NCAP AO-805)**

**Revised 05/17/2026**

This emergency action plan is the guide for professional staff, temporary staff, volunteers, participants, and guests at Worth Ranch Scout Ranch, the Brazos River Canoe Trip, and The Big Adventure Summer Camp.

“The Scout Oath and Law are our binding disciplinary force”, Lord Robert Baden-Powell. No policy document can or should attempt to cover every situation someone might encounter. When in doubt, always consider the Scout Oath and Scout Law.

While the likelihood of experiencing a major emergency at Worth Ranch is low, this guide was created following Scouting America’s motto, Be Prepared!

In this document, the following terms are used

- Camp Administration Team – The camp administration team consists of the Camp Director and the Program Director (during summer camp programs), the professional scouter in charge (during short term events) and the Camp Ranger (year-round).
- Senior Camp Staff – This term includes the program area directors, managers, and the camp business manager (during summer camp programs).
- Staff Senior Patrol Leader – During summer camp programs, this is the elected lead staff member. During other program activities throughout the year, this is the most senior Scout aged staff member or volunteer working the event or camp. For events without Scout aged staff, another adult on staff or volunteering should fill this roll for the procedures outlined here.
- Emergency Headquarters – The camp office, also known as Landreth Lodge, serves as the camp headquarters. An alternate headquarters or command post may be established as necessary by the camp administration team or the incident commander.
- Emergency Assistance Meeting Point – the road at main entry plaza of Worth Ranch, between the Foreman’s House and the Dario Lorenzetti Memorial Pavillion (32° 49' 2.7546", -98° 19' 34.1178"), is the emergency meeting point to meet first responders for any emergencies located within the main camp. For emergencies on the McClure Property, on one of the Range and Target activity ranges (archery, rifle, or shotgun), at the Old Man Gillespi Campsite, at the warehouse, or at the Ranger’s residence, the emergency meeting point shall be on Worth Ranch Road at the point closest to where assistance is needed. The emergency assistance meeting point should be agreed upon with the county 911 operator or dispatcher when the call is made for assistance.

- Incident commander – should it become necessary to implement this emergency action plan, a member of the camp administration team will be identified as the incident commander. The camp administration team may name another qualified, trained, and competent adult on the property as the incident commander instead of a member of the team. The incident commander is responsible for the overall management of the incident and has final decision-making authority on site.

## **Notices**

**Staff members, volunteers, and participants are NOT authorized to release information or make any statements on behalf of the Longhorn Council or the camp. All media requests should be directed to the Longhorn Council Chief Executive Officer.**

**This document is confidential for the use of staff, campers, and parents/guardians of campers or staff. It may not be released without the explicit permission of the Longhorn Council Chief Scout Executive. Per the Texas Health and Safety Code, section 141.0091(o), an emergency plan (this plan) submitted to, received by, or accessed by the department, the Texas Division of Emergency Management, an emergency management director or coordinator designated under Section 418.1015, Government Code, or any other governmental entity under this section is confidential and not subject to disclosure under Chapter 552, Government Code.**

***In the event of an emergency please follow these procedures.***

### **General Assembly**

**Signal:** Continuous ringing of the main bell and/or siren(s). Announcement over the camp radio's emergency channel and over the public address system. Repeat the announcement at least two times.

**Fire Signal:** Three 15-second soundings of the bells/sirens at one minute intervals. Announcement over the camp radio's emergency channel and over the public address system. Repeat the announcement at least two times.

Procedure:

- All participants (Scouts and leaders) are to assemble at the main flagpole (the muster area) to wait quietly for instructions from the camp administration team.
- Unit leaders are to assist their campers with disabilities, mobility issues, or special situations that require additional assistance. The camp staff can provide assistance as necessary.
- Adults and/or drivers with vehicles in camp should bring their vehicle keys with them. *Getting vehicle keys does not take priority over getting to the assembly point.*
- Each unit leader should immediately make an accounting of their unit's members and guests present (see the accountability procedures).
- Staff (paid and volunteer) are to secure their assigned program area or facility and assemble in the muster area(s).
- The staff senior patrol leader or another ranking staff member will make an accounting of the staff (see the accountability procedures).
- The camp administration staff shall collect all accountability reports.
- **EXCEPTION** – In the event of an active severe weather emergency...
  - Everyone should take shelter in the closest building, covered shelter, or shelter in place.
  - As soon as reasonably safe, people should move to the closest of the following buildings: Duncan Hall, Roeser Hall, or The Collier Building.
  - Unit leaders at each of these shelters will make an accounting of their members and guests present.
  - The ranking staff member at each location will make an accounting of staff and collect the unit accountability also.
  - The camp administration staff shall coordinate a camp wide accountability as soon as it is safe to do so.

### **Missing Person**

- Youth should immediately alert an adult of the missing person. Adults should contact their unit leader and notify the camp staff.
- Determine when and where the person was last seen.
- Everyone should remain calm so others aren't unnecessarily alarmed.

- Discover (if possible) the state of mind of the person. Were they depressed or angry, threatening to run away? Did they fall behind on a hike, or leave to visit a friend in another unit? A person who does not wish to be found will require a wider and more careful search.
- Do a search of the immediate area with available staff. The person may have wandered to the edge of the activity. Ask nearby participants and staff if they have seen or know where the person is. Before leaving the rest of the group to find a person, see that the group is supervised by another staff member or unit leader.
- Attempt to contact the lost person via their cell phone, if they might have one.
- Anyone sent to search for the missing person should always do so in at least pairs and with a specific search area defined for them. If there are not enough people to keep searchers in pairs, wait until additional resources are available to create additional search parties. Use only qualified searchers familiar with the area they are to search and have an agreed check-in time for them to update their progress. Do not allow searchers to become additional lost people.
- Check with any known acquaintances (friends in other tents, units, etc.)
- Check bathrooms (nearest the last know point and the main bathrooms), the dining hall, the campsite, their tent, their friends' tents, the first aid station, and the trading post.
- Contact the camp administration team, a senior staff member, or other staff about the situation. Include the name of the missing person, when and where last seen, description of person: hair, eyes, weight, height, and, clothing.
- Check program areas, including program areas that are closed, for the lost person. Pools and climbing areas can be an attractive area for a young person to lose track of time in.
- The camp administration team will organize an extended search.
- If the Scout is not found in 30 minutes, the person will be presumed lost. The camp administration team should instigate the general assembly procedure and make an accountability of the camp.
- If the missing person is still not accounted for, the camp administration team will institute a public search that will include contacting the county sheriff (dial 911), the Longhorn Council Chief Executive Officer, the Longhorn Council office staff, and person's parents, if they are a minor. The emergency contact for a missing adult may also be contacted. The Palo Pinto County Emergency Management Coordinator will be contacted after the above contacts are made.
- Do not ignore the remaining participants. Be calm and positive. Acknowledge their fears and move on to some activity.
- Once the lost person situation is resolved, the camp administration team will complete an incident report and any other reports as required.

## **Fire at Camp**

- Sound the alarm by yelling “Fire!”.
- Notify an adult (if a youth finds the fire)
- Report the fire to the camp staff. Camp staff should immediately notify the camp administration team.
- Extinguish the fire only if it can be done quickly and safely. Dirt can be used to smother a fire. Water can be used to douse a fire. Drop/collapse any tents to smother a fire inside a tent. Fire extinguishers may be available in nearby program areas.
- Youth should not be directly involved in the firefighting process.
- **Evacuate the area** - If the fire is not immediately extinguished, everyone should evacuate the area and go to the main flagpoles (the muster area). Escape routes downhill of a fire are preferred.
- The camp administration should call 911 to report the fire. Be prepared to clearly identify the location of the fire. A competent, knowledgeable adult, preferably on staff, should be sent to the Emergency Assistance Meeting Point to lead the initial responders to the general location of the fire.
- For any fire with a potential to spread beyond the initial ignition point, the camp administration should instigate a camp-wide assembly. See the General Assembly procedure above.

### **Fire Outside Camp (wildfire)**

In a perfect situation, local fire officials will give adequate time to organize and evacuate the camp. However, if a fire is discovered near camp, immediately notify the camp administration team. If not already notified, the camp administration team shall report the fire to the local authorities (call 911).

### **Fire – Next Steps**

If after the camp administration staff assess the risk to camp, campers, or camp evacuation routes and find that there is a substantial risk to participants; or if directed by a local agency to evacuate or prepare to evacuate, the camp administration will

1. Signal for a general assembly (see procedures above)
2. Once the accountability procedures are materially complete, and if time allows, hold a general meeting with senior staff and unit leaders at the camp office or other suitable location. The rest of the camp staff should remain with the participants and ensure that no one leaves the general assembly.
3. If a camp evacuation is called for, follow the camp evacuation procedures. Contact the county emergency management coordinator in the event of an evacuation.
4. If a camp evacuation is not called for, but the camp is put on notice that an evacuation may be necessary, the camp administration staff should suspend normal activities and begin preparations to implement the camp evacuation plan. The camp administration team should also contact the Longhorn Council Chief Executive Officer and the county emergency management coordinator for additional assistance.

### **Camp Evacuation Plan**

The decision to evacuate camp lies with the camp administration team in consultation with the Longhorn Council Chief Executive Officer. Local authorities (the county sheriff, the county emergency management coordinator, the county fire marshal, the Palo Pinto Volunteer Fire Department chief, or the county judge) or state authorities (the Texas Department of Public Safety, the Texas A&M Forest Service, the Governor's office, the state fire marshal, etc.) may also direct the camp to be evacuated.

Primary evacuation routes to the muster zone are illuminated at night. Evacuation routes are shown to campers during their camp tour and orientation.

*There are two types of "evacuations" of camp. "Closing camp" and "evacuating camp". Closing camp would generally include multiple days of advance notice and can be coordinated with unit leaders and parents. The camp administration team should coordinate the departure of units in a fashion similar to the unit's existing plans. Some units will have on site transportation to take people and equipment out of camp and back to their local community. Some units may have parents pick up their Scouts at camp – if time allows and it is safe to do so, parents will be contacted by their unit leaders to come to camp and take their campers home.*

For a *camp evacuation*, the steps below should be completed **as time permits**. The primary focus of the camp evacuation is to safely remove people from the danger at the camp without introducing any additional risk to their safety during the evacuation.

- The camp administration team may announce an emergency leader meeting to coordinate the evacuation of camp. Leaders will be advised of the planned evacuation and the timeline to evacuate camp.
- The camp administration team may signal a general assembly if one has not already been started and complete a camp accountability as described in the general assembly procedure.
- The camp administration team will determine if the primary external rally point is suitable for the evacuation and notify all camp staff and all evacuation vehicle drivers of their destination. Any external communications regarding the evacuation should also reference the external rally point's location. The pre-defined rally points are listed below. A senior staffer should be sent to the external rally point to confirm its suitability to receive people from the camp.
- At the general assembly, unit leaders should confirm the number of seats they have at camp (the number of seats available in vehicles on site to transport the driver and additional passengers) and the number of necessary seats to evacuate their unit. Unit leaders should report to the staff the number of open seats they have or the number of people that need seats to leave camp.
- The staff senior patrol leader should confirm how many seats are available in vehicles owned by the staff versus how many staff members are to be transported. Care must be taken to ensure that staff members that are also members of units currently in camp are accounted for and aren't double counted.

- Unit leaders and the staff senior patrol leader should also identify any individuals with disabilities or mobility issues that require additional assistance in the evacuation process. They will then coordinate additional resources as necessary to ensure these individuals are safely transported and evacuated.
- A member of the camp administration team shall coordinate across the units and the staff to utilize every seat available in the vehicles leaving camp. If available, a large capacity vehicle such as a van or bus can also be utilized to move people to the external rally point.
- Should the camp not have enough resources to safely transport all individuals out of camp, additional resources may be requested to come to camp to assist. These may include:
  - Families of campers, leaders, volunteers, and staff in the surrounding community
  - Public resources including the Palo Pinto County Sheriff's office, the Palo Pinto Volunteer Fire Department, the Texas Department of Public Safety, or any other agencies with a mutual aid agreement with these agencies or other local agencies
  - School districts including Palo Pinto ISD, Mineral Wells ISD, Graford ISD, Gordon ISD, Santo ISD, and Strawn ISD.
  - For public assistance, contact the local agency representative on site, the Palo Pinto County Emergency Management Coordinator (see the emergency contact sheet), or call 911.
- People in camp should be directed to not pack gear or equipment. Only people will be evacuated from camp.
- Staff should secure their program area and other facilities under the assumption that no one may return to camp for several days or longer (stoves and ovens off, doors closed, etc.).
- Units should secure their campsites (put out campfires, lanterns, etc.).
- A senior staff member should be assigned to track the departure of each unit from camp. This staffer should be located at the exit from camp with the roster of units currently in camp. Units are encouraged to travel together. The unit departing camp should report the number of people they are transporting and the total number of vehicles for their unit as they leave the property. The staffer should track the unit and the number of vehicles that have departed camp to confirm that the unit has left camp.
- Drivers should be reminded of their destination, the route to get there, and to use reasonable caution and care during the drive. Drivers should go directly to the external rally point and should not go to any other destinations.
- If a unit does not have all its vehicles accounted for at the exit, the unit leader should be contacted to confirm the count before sending staff back into camp to search for a missing vehicle.
- The staffer at the rally point should complete a similar vehicle accounting as units arrive.
- Once a unit has arrived at the external rally point, the unit leader shall perform another accountability check to ensure all their adults and members have arrived. Once this is complete, it should be reported to the staffer in charge there.

- The staff senior patrol leader will perform a similar accounting of every staff member arriving at the external rally point.
- Anyone not accounted for at the rally point should be immediately investigated. The missing person procedure can be used in this situation also. If the person may still be at camp, the camp administration team should contact the local authorities directly or call 911 to report the missing person potentially in the evacuated area.
- The camp administration team, in consultation with the Longhorn Council Chief Executive Officer and local authorities, as applicable, should determine if units should plan on returning to their local communities and reuniting their members with their parents or plan to stay at the external rally site to await an all clear to return to camp. The camp administration team should regularly share status updates with the unit leaders and staff.
- Unit leaders shall coordinate contacting the parents of their members. A senior staff member should coordinate contacting the parents of any youth staff.

**Anyone arriving at camp during an evacuation should be directed to the external rally point. No members of the public including council/camp staff and volunteers should be permitted to enter camp during an evacuation without the permission of the camp administration team.**

During an evacuation, campers should not be released to their parents or guardians at camp. Arriving parents should also be directed to the external rally point or reunification center where their children can be released to the parent(s) after:

- the camper is accounted for at the rally point,
- confirmation is made that the person picking up the camper is authorized to do so,
- the unit leader is advised that the camper is being picked up, and
- the parent has signed out the camper.

These procedures are in place to ensure that all campers are accounted for when they leave camp, when they arrive at the rally point, and that a true accounting of campers remaining with the staff is maintained. Parents and guardians are expected to follow these procedures to ensure the safety of their child/children during this type of event.

### **Camp Evacuation Routes and Internal Rally Point**



Evacuation routes are marked on the map above along with the internal rally point. During the camp orientation, the internal rally point/muster area will be identified. For arriving first responders, the emergency meeting point is the location to meet first responders for any emergencies located within the main camp. Other meeting points may be coordinated with the emergency services as necessary (on Worth Ranch Road, the camp main gate, etc.).

**External Rally Points**

**Primary external rally point** – The parking lot located at FM4 and S. 5<sup>th</sup> Avenue (32° 46' 3.993", - 98° 17' 55.5324") across from the Palo Pinto County Sheriff’s office at the Palo Pinto County Courthouse is the external rally point in the event of a camp evacuation. From camp, exit on to Worth Ranch Road heading east. Turn south (right) on to FM4 and drive approximately 3 miles. Turn west (right) on to US-180 E/Cedar St. and drive approximately 0.2 miles. The parking lot is located on the south side of the roadway at S. 5<sup>th</sup> Ave.



**Alternate external rally point 1** – in the event that local authorities direct the camp to be evacuated beyond Palo Pinto (if Palo Pinto itself is being evacuated, for example), the alternate external rally point will be the Allsup’s Convenience Store east parking lot located at 1900 US-180, Mineral Wells, TX 76067 (32° 48' 15.2058", -98° 8' 12.1452"). From camp, exit on to Worth Ranch Road heading east. Turn south (right) on to FM4 and drive approximately 3 miles. Turn east (left) on to US-180 E/Cedar St. and drive approximately 9.9 miles. The store and parking lot will be on the north side of the roadway.



**Alternate external rally point 2** – in the event that local authorities direct the camp to be evacuated to the north (if Palo Pinto itself is inaccessible, for example), the alternate rally point will be the Graford High School west parking lot located at 400 W. Division Ave, Graford, TX 76449 (32° 56' 23.5422", -98° 15' 13.572"). From camp, exit on to Worth Ranch Road heading east. Turn north (left) on to FM4. Drive 7.0 miles and follow the roadway to the east (right) for 1.4 miles then follow the roadway to the north (left) for 1.5 miles. Turn east (right) on Hwy 254 E and travel .8 miles. Turn left on TX-337 N and travel 0.4 miles. Turn east (right) on W. Division St. and travel 0.5 miles. The parking lot will be on the south side of the road.



If directed by local or state authorities, the camp may be evacuated to an external rally point or reunification center identified by the local or state authority.

### **Severe Injury, Severe Illness, or Serious Accident**

All injuries beyond Scout rendered self first aid are to be reported to the camp health officer or to the camp ranger.

See Medical Camp Policy NCAP HS-505

For any campers with a severe injury, illness, or involved in a serious accident, the camp health officer shall coordinate with the unit leader to contact the parent or guardian of the camper. The camp health officer may direct another member of the camp administration team to contact the parent or guardian. The camper emergency contact information is also available on the camper health form and the camp roster.

For unit leader injuries, the camp administration team shall coordinate with the leaders from the unit to ensure suitable leadership and supervision is still provided for that unit. The camp administration team may assign another adult staff member to the unit until the unit can provide suitable leadership for themselves. Scouting America procedures on youth supervision and adult contact must still be followed.

The camp health officer shall utilize additional qualified staff as necessary to provide care and support for patients in this category. For injuries involving more people than the on-site staff can reasonably support, the county emergency management coordinator should be contacted for additional assistance.

### **Aquatic Emergencies**

See NCAP PS-201 Emergency Procedures Aquatic Areas

For any campers involved in an aquatic emergency, the camp health officer shall coordinate with the unit leader to contact the parent or guardian of the camper. The camp health officer may direct another member of the camp administration team to contact the parent or guardian. The camper emergency contact information is also available on the camper health form and the camp roster.

For unit leaders involved in an aquatic emergency, the camp administration team shall coordinate with the leaders from the unit to ensure suitable leadership and supervision is still provided for that unit. The camp administration team may assign another adult staff member to the unit until the unit can provide

suitable leadership for themselves. Scouting America procedures on youth supervision and adult contact must still be followed.

For additional assistance, the county emergency management coordinator can also be contacted.

### **Epidemic (widespread sickness)**

The Health Officer will make the determination if someone is ill and suspected of being ill with a communicable disease. If someone is ill or suspected of such illness, they should be isolated to ensure both safety for others and to the patient. Any youth that is isolated shall have adult supervision provided. Isolation, for a small number of patients, may be in the first aid station at The Foreman's House. For a larger number of people to be isolated, a specific campsite may be identified. For a unit with multiple ill people and/or exposed people, their existing campsite may be utilized. Staff and other campers should be directed away from the isolation campsite(s). Anyone in isolation may not participate in other camp activities. Consideration should be made to provide ongoing support for these individuals including appropriate shelter, food, water, and any escalating illness that may require a higher level of care.

The camp health officer shall notify the camp administration team of any suspected epidemic.

Staff providing support or treatment to ill people with a potentially communicable disease or those that have been potentially exposed to other ill patients (in general, the isolated people) shall use personal protective equipment commensurate with the threat. Gloves, face masks, and eye protection, are to be readily available in the first aid station at all times. Asymptomatic exposed people should also wear personal protective equipment while in isolation to reduce any additional exposures.

The parent or guardian of an isolated youth should be contacted to pick their child up from camp as soon as possible. The camp administration team, in consultation with the camp Health Officer, will provide appropriate medical information and recommendations to the parents and guardians. The unit leader may also be consulted to facilitate the conversation the parents and guardians. The parent/guardian contact information may be obtained from the unit leader, the camp health officer (on the camper medical form), or the camp administration team (from the camp roster/information).

Appropriate privacy measures should still be observed related to the status of isolated people.

The camp administration team shall contact the Longhorn Council Chief Executive Officer for guidance on ongoing camp operations. The camp Health Officer should contact the Council Medical Director for additional support and recommendations. For serious illness requiring additional public resources, the camp Health Officer can contact Palo Pinto County (call 911), the local hospital (see the emergency contact sheet) and/or the county emergency management coordinator (see the emergency contact sheet). The Council Medical Director

shall make any notifications to the Texas Department of State Health Services as required by law. See the camp health standing orders for more information.

### Death of a Participant, Staff, or Guest

In the event that a person is found and appears to be deceased or is deceased, the camp health officer and the camp administration team must be immediately contacted. The camp administration team shall immediately notify the county sheriff and medical first responders by calling 911. For additional assistance, the county emergency management coordinator may be contacted for assistance. First aid shall be rendered by the camp health officer until such time that professional responders or the camp's medical director determine that the person is deceased. Other participants should be directed to leave the area. The primary concern at that point should be those that were in the area or witnessed the event. The camp administration team shall secure the area to keep others away until local officials arrive. Senior camp staff should remain with any participants that may have observed the deceased person. The Longhorn Council Chief Executive Officer shall direct any further actions of the staff.

At no time should any statements be made to the public by anyone other than the Longhorn Council Chief Executive Officer. The Longhorn Council Chief Executive Officer, or their suitable designee, is responsible for contacting the parent/guardian, or emergency contact, of the deceased person.

### Unauthorized Person(s)

During council-organized events (including summer camp), Longhorn Council uses a wristband system to identify people that have checked in and are permitted to be on camp. As an adult or staff member, if you suspect an unauthorized person(s) has entered camp, use the **Power of Hello**<sup>\*</sup>. Used effectively, the right words can be a powerful tool. Simply saying "Hello" can prompt a casual conversation with unknown individuals and help you determine why they are there. **Remember, a Scout is friendly.** The **OHNO** approach – **O**bserve, initiate a **H**ello, **N**avigate the risk, and **O**btain help – helps you observe and evaluate suspicious behaviors, empowers you to mitigate the potential risk, and obtain help when necessary. The OHNO approach to risk prevention relies on reasonable persons to make these observations to properly detect and report suspicious behavior.



\*From <https://www.cisa.gov/topics/physical-security/conflict-prevention/power-hello>

As a Scout, you should notify your unit leader, a staff member, or another known adult of the potentially unauthorized person.

Lost or unknown people should be directed to the camp administration team, typically at the camp office. If necessary, accompany the lost person to the office.

Unfamiliar people on the camp property may range from someone lost and looking for directions to a person with intent to do harm to people or property. Some judgement must be made on the part of staff. Persons should be questioned to ascertain who they are and why they are here. Do not antagonize the intruder. Be polite, give assistance if possible, refer the person to the camp office, or ask them to leave. This is private property and not open to the public. Observe to ascertain that the person leaves the site. If the appearance of the unfamiliar person makes you uncomfortable, approach with another staff member. Someone should stay with the campers away from the situation. If the person seems threatening in any way, do not approach or take any chances. Remove yourselves and the campers from the area, notify the camp administration team, and observe the whereabouts of the person. If you see or suspect an intruder in camp at night, immediately and quietly notify the other staff members and the camp administration team. Check all camper sleeping areas with a head count. In order to prevent false alarms and unnecessary fright, all camp personnel will carry flashlights and identify themselves when walking in the camp at night.

The camp administration team may contact the county sheriff (call 911) for additional assistance.

The camp administration team may also, as necessary, institute a shelter-in-place order for the camp due to an unauthorized person or people in camp. See the Shelter-in-Place Orders section for more information.

### **Child Abuse & Kidnapping**

Suspected Child Abuse - whether physical, mental, emotional or sexual - should be reported to the Camp Director or Program Director immediately. In Texas, [Section 261.101 of the Texas Family Code](#) requires any person suspecting child abuse or neglect must immediately report it to authorities. Healthcare professionals are legally mandated reporters who must report within 24 hours of suspected abuse. A professional cannot delegate the responsibility of making this report.

### **Attempted or Suspected Kidnapping**

**DO NOT ALLOW ANYONE (stranger or known) TO REMOVE A CAMPER FROM CAMP!**

All staff members will refer all visiting persons (stranger or known) to the camp administration team at the camp office. Under NO conditions may a camper be removed from camp without the permission of the camp administration team during summer camp operations or their unit leader during other events. Strangers may come to the camp in search of potential victims.

Custody disputes between parents can result in an attempt to remove a camper from camp. Parents can file a form in advance if a camper is to be picked up from camp early or by another person. The camp administration team will verify this written instruction if someone comes for a camper. Should a camper be taken from camp without the expressed and direct approval of the camp administration team Director: Get descriptions of all persons involved if possible (hair, clothes, height, license number of car, etc.). Notify the Camp Director IMMEDIATELY!

### **Transportation Emergencies (including boating)**

See NCAP AO-805 Vehicular Emergencies

For any campers involved in a vehicular emergency, the camp health officer shall coordinate with the unit leader to contact the parent or guardian of the camper. The camp health officer may direct another member of the camp administration team to contact the parent or guardian. The camper emergency contact information is also available on the camper health form and the camp roster.

For unit leaders involved in a vehicular emergency, the camp administration team shall coordinate with the leaders from the unit to ensure suitable leadership and supervision is still provided for that unit. The camp administration team may assign another adult staff member to the unit until the unit can provide suitable leadership for themselves. Scouting America procedures on youth supervision and adult contact must still be followed.

For additional assistance, the county emergency management coordinator can also be contacted.

### **Natural Disasters Including Weather Emergencies**

Worth Ranch is equipped with radios to receive alerts from the National Weather Service (NWS). These radios should be monitored 24x7 anytime camp is in session. Radios are to be monitored in these key locations and by these staff positions:

- Landreth Lodge – Camp Director and Program Director
- Ranger's residence – Camp Ranger
- Room 1 of Oscar Bilger Lodge – Camp Senior Staff Member
- The Foreman's House – Camp Health Officer
- Duncan Hall (kitchen) – kitchen staff
- The Collier Building – Camp Commissioner.

The camp administration team shall broadcast the alert on the camp radio system after receiving the NWS alert. Anyone staffing or residing in the location of an NWS radio shall immediately contact the camp administration team if no one has already re-broadcasted the alert on the camp radio system.

The camp administration team or the incident commander, if activated, shall direct the staff to ensure the continued safety and security of campers and staff at the camp. For any campers in

program areas, the senior most staff member shall be responsible for the program area. For campers with their unit or in their campsites shall be supervised by their unit leader. Should campers and staff be sheltered in buildings or other structures, the senior most staff member in each location shall be responsible for this area. All coordination shall be through the incident commander or the camp administration team if an incident commander hasn't been activated.

For additional assistance in a natural disaster, the camp administration team may contact local authorities (call 911) and the county emergency management coordinator.

### **Tornado Warning**

In the event that the National Weather Service issues a tornado warning for any area of Worth Ranch, the camp administration team shall immediately notify any participants in the affected area of the tornado warning. In the event that the Tornado Warning impacts a significant portion of the camp, the camp administration team shall instigate a camp-wide alert. For injured persons, contact the camp health officer and following the injured person(s) procedures. Render first aid as necessary.

**Signal:** Continuous blast of the siren for three minutes. Announce the nature of the emergency to all camp radios and PA.

**Procedure:** Shelter-in-place - participants in sessions are to follow the instructions of the staff member in charge of the activity. During the day or night, participants should move from the campsite and into a depression, ditch, or ravine that is at a right angle of the path of the tornado. Do not attempt to gather in the dining hall or any other large, open building. If there is an impact from a tornado on the camp property, the camp administration team shall instigate a camp accountability check to ensure that all persons are safe and accounted for as soon as it is safe to do so. Areas damaged should be evacuated and closed until such time that they may be made safe again. The camp administration team shall contact the Longhorn Council Chief Executive Officer to coordinate the continued operation of camp and external notifications.

### **Lightning**

The camp administration team will notify the following program areas to close:

- Pool and surrounding areas
- Target and Range Activities (rifle, shotgun, and archery)
- Waterfront areas (boat docks/marina and The Island)
- Parade ground and flagpole areas

In the event of a lightning storm or any storm accompanied by lightning, care should be taken to prevent injuries. Participants and staff should take actions to actively decrease the chances of being struck. Never stand under trees, tall structures, or out in the open during the storm.

### **Worth Ranch Topology and Waterfront**

Worth Ranch includes a variety of topological features including riverfront areas, lower elevation campsites known as “The Bottoms”, middle elevation campsites known as “The Tops”, a higher elevation area known as Kyle Mountain, and an undeveloped, primarily flat and open area known as “The McClure Property” (the open area east of Kyle Mountain to FM4). In The Bottoms, there is also a low water crossing that is a concrete roadway that connects the Collier Campsite area with campsites beyond the creek – Bowie, Travis, Bonham, Big Foot Wallace, Houston, and Deaf Smith.

The Brazos River is the western border of Worth Ranch. It is primarily fed from Possum Kingdom Lake through the Morris Sheppard Dam. Worth Ranch is approximately 15 miles downstream of the dam. Changes in the flow rate at the dam take 5-6 hours to reach Worth Ranch. There is just under a half a mile of riverfront property at Worth Ranch. The river height is managed by the Brazos River Authority through the opening and closing of spillway gates at the dam. Each flood gate can release approximately 9,000 cfs of water. Historically, opening 3 gates at the same time occurs once every 5 years. The maximum number of gates opened previously was 6 (on two different occasions since the dam’s construction). The river height during these historic events has never reached the current FEMA 100-year floodplain. It is noteworthy that the river height, at its typical seasonal peak, including the opening of multiple gates at the dam, does not rise high enough to encroach on any campsites at Worth Ranch. Only the low water crossing is impacted as the river backs upstream into the creek under the crossing.

See also the Worth Ranch map for specific locations described in this section.

### **Flash Flood Watch or Flood Watch**

Upon the issuance of a Flash Flood Watch or a Flood Watch by the National Weather Service that includes The Bottoms at Worth Ranch, or a notification of a single gate opening at the Possum Kingdom Lake (in the Morris Sheppard Dam), the camp administration team shall immediately notify the unit leaders and campers in any of the sites beyond the crossing of a potential need to evacuate the area. If the weather forecast is for continued rain and the camp has capacity to allow a unit to relocate to campsites on the Collier side of the crossing, the camp administration should facilitate the relocation.

### **Flash Flood Warning or Flood Warning**

Upon the issuance of a flash flood warning or flood warning impacting areas of Worth Ranch beyond the creek crossing in The Bottoms, the camp administration team shall evacuate any units camping beyond the crossing as quickly as it is safe to do so. In the event that it is not safe to move to the Collier Building (the closest structure/shelter), participants should take shelter in the closest campsite’s covered shelter. Participants should evacuate to the Collier Building or Duncan Dining Hall as soon as it is safe to do so.

### **Water release from the Morris Sheppard Dam and Possum Kingdom Lake**

When additional water releases are scheduled by the Brazos River Authority, they alert potentially impacted people downstream via email, text messages, and postings to their website and social media. The camp administration team along with key staff members are subscribed to receive updates from the Brazos River Authority. Anyone can subscribe to updates via their website (<https://brazos.org/forms/downstream-notification-signup>).

In the event of an alert from the Brazos River Authority of the opening of *one* flood gate, the camp administration team will institute the same procedures as a flash flood or flood *watch* issued by the National Weather Service. Additionally, all riverfront and aquatic activities on the river will be closed and relocated as necessary in advance of the approaching additional water flow. Signage and a physical warning barrier are to be placed across the entrance to the Boat Docks, the Kim Anderson River Trail, and the Island noting that the areas are closed.

In the event of an alert from the Brazos River Authority of the opening of *additional* flood gates, the camp administration team will institute the same procedures as a flash flood or flood warning issued by the National Weather Service impacting areas beyond the creek crossing in the lower portion of the camp. Historically, river water will back up the creek and cover the crossing with 6 to 18 inches of standing water only after multiple gates are opened in the dam.

## **Emergency Procedures for Brazos River Canoe Trips**

### Weather Safety

Always be prepared for the worst, particularly when paddling during the summer, as weather conditions in North/Central Texas on the Brazos can change rapidly. Typical conditions in this area include extreme heat and the occasional summer thunderstorm.

Even when forecasts are favorable, remember that temperatures on the water are usually colder and winds are often stronger than conditions on shore. Monitor conditions continuously and watch for sudden wind shifts, rapid temperature drops, or darkening skies.

Weather information should be obtained from the National Weather Service prior to departure and reviewed daily when possible. The Trek Director will be in contact with main camp daily for any major updates, with the ability to make a satellite phone call if necessary.

If weather conditions worsen while canoeing on the Brazos River, prioritize safety over continuing the trip. Conditions on the Brazos can change quickly due to wind, thunderstorms, and rising water levels.

#### 1. Get Off the Water Early

- At the first signs of severe weather (darkening skies, lightning, strong or shifting winds, sudden temperature drops) begin moving toward the nearest safe shoreline.
- Do not attempt to “beat the storm.” Open water and exposed river bends increase risk.

#### 2. Seek a Safe Landing Spot

- Land the canoe at a stable, accessible shoreline, preferably on higher ground.

- Avoid steep banks, eroded edges, or areas with fast current.
  - Stay clear of low-lying sandbars, which may flood rapidly if upstream rain causes water levels to rise.
3. Take Shelter Safely
- Move away from the water's edge once ashore.
  - Avoid sheltering under isolated trees, tall trees, or dead limbs, which are especially dangerous during high winds or lightning.
  - If lightning is present, spread out slightly (while staying within sight) and crouch low on insulated ground until the storm passes.
4. Secure Canoes and Gear
- Pull canoes fully out of the water and secure them to prevent drifting.
  - Keep essential gear, dry clothing, and emergency supplies accessible.
  - Put on dry layers if exposed to wind or rain to reduce hypothermia risk, even in warmer Texas seasons.
5. Monitor River Conditions
- Be aware that storms upstream can cause rapid rises in water level on the Brazos, even if rainfall is light where you are.
  - Watch for increasing current speed, floating debris, or rising water along the bank, these may indicate a surge.
  - In the event of an alert from the Brazos River Authority of the opening of additional flood gates, the camp administration team will institute the same procedures as above.
6. Communicate and Regroup
- Keep the group together and maintain visual contact.
  - Use whistles or radios if necessary to coordinate movement or alert others.
  - Inform the group leader immediately if anyone is injured, missing, or struggling.
7. Decide Whether to Continue or Stop
- After the weather passes, the Trek Director will assess:
- River level and current speed
  - Wind conditions
  - Physical condition of participants
  - Remaining daylight
- If conditions remain unsafe, stop for the day, set up camp if appropriate, or arrange for evacuation at the next safe access point.
8. Emergency Situations
- If someone is injured due to the weather or conditions become life-threatening, contact the camp health officer, the camp administration team (via the camp extended radios or mobile phone) or call 911 for assistance.
  - Access points are reviewed and assessed annually prior to camp. Know the nearest Brazos River access points and emergency services for your section of the river and communicate with Camp Director.

First Aid and Medical Response

The Trek Director will carry the primary first-aid kit, and all participants must know its location. The Trek Director, Staff, and adult participants will all be certified in American Red Cross Wilderness First Aid training. Personal medications must be carried by the individual in waterproof containers.

If someone is injured severely/beyond the training of the staff, contact the camp health officer, the camp administration team (via the camp extended radios or mobile phone) or call 911 for assistance.

All personnel are expected to operate:

- Within their individual training, certification, and licensure,
- In compliance with applicable state and federal law, and
- Within the clinical boundaries defined by the Standing Medical Orders referenced earlier in this document.

**Shelter-In-Place Orders** (by a government agency or official, or by the camp administration team)

Upon the issuance of a shelter in place order by a local or state government official, the camp administration team shall determine, in cooperation with the government official, if the participants and staff in camp should stay in their current locations (program areas and campsites), move to the closest physical cover (buildings, covered shelter, pavilion), or designated shelters (building). Once that is determined, the camp administration team shall

- Announce on the emergency radio channel and PA the shelter in place directive including to stay in place, to move to physical cover, or to move to the closest shelter. This announcement should be repeated at least two times.
- As soon as reasonably safe, people should move to the closest of the following buildings: Duncan Hall, Roeser Hall, or The Collier Building.
- If moved to the closest designated shelter (Duncan Hall, Roeser Hall, or The Collier Building), unit leaders at each of these shelters will make an accounting of their members and guests present.
- The ranking staff member at each location will make an accounting of staff and collect the unit accountability also.
- The camp administration staff shall coordinate a camp wide accountability as soon as it is safe to do so.

The camp administration team shall coordinate with the local government official the lifting of any shelter-in-place orders. As soon as safe to do so, and depending on the nature of the shelter-in-place order, the camp administration team should conduct the camp accountability procedure and contact the Longhorn Council Chief Executive Officer for guidance on continuing camp operations and communications with parents and others outside of camp.

### **Emergency Notification Procedure (external)**

For staff contacts and emergency contacts, see the posted emergency contact list.

In situations where these emergency plans have been activated, the ranking member of the camp administrator or their designee shall immediately notify...

- The Longhorn Council Chief Executive Officer via telephone or their deputies and Council staff until a member is reached in person.
- In the event of a widespread event or evacuation of the camp, or in the event that additional external resources are required, contact the local emergency management coordinator.
- In any emergency requiring law enforcement, fire, or medical response, the camp administration team shall contact 911. See the emergency contact list for additional resources including Palo Pinto Hospital, Palo Pinto County Sheriff (non-emergency number), and the camp medical director.

After consultation with the Chief Executive Officer, the camp administration team shall coordinate with unit leaders to contact parents of participants. Unit leaders have the most knowledge and personal connections with their parents and guardians. If the unit leader does not have contact information for the parents of their members, the emergency contact information is also available from the health officer.

### **Emergency Communications Systems (internal)**

There are multiple methods of communications available to camp staff and campers at Worth Ranch.

#### **Camp Radio System**

The camp radio system provides multiple channels for redundancy and emergency use. The primary radio channel is available to staffers assigned a radio. During summer camp operations, the following staff positions shall always be assigned a radio. Additionally, a camp radio will be located in the program areas below when they are in operation.

Camp Director	High Gear area
Program Director	Range and Target Activity areas
Camp Ranger	Pool
Health Officer	Boat docks
Nature and Ecology Director*	Collier Building*

\*This may be the same radio/person as the nature and ecology (NECO) is located in the NECO area at the Collier Building.

The camp radio also has a priority emergency announcement channel. All radios are programmed to monitor that channel and will automatically switch to that channel when an emergency announcement is received.

A subset of the camp radios have an option to communicate over the public cellular network for communications when off the camp property.

#### **Public Address System**

The camp has a public address system that will sound an alert tone and replay any messages broadcast on the emergency announcement channel. This radio system does not rely on any Internet connections. The positions listed in the left column above will have the ability to broadcast on the emergency announcement channel. The camp administration team has primary responsibility to make emergency announcements. The camp health officer and the NECO director can also make emergency announcements.

#### Mobile Phone/Public Network

For each session of summer camp, the unit leaders can join a GroupMe messaging group to receive general camp updates and alerts for that session.

For camp staff, each department has their own GroupMe or group text message communications. The camp administration team and the program leads also have their own GroupMe or text message group to communication leadership updates to the members.

#### Special Situations

Unit leaders have the primary responsibility for ensuring that the campers and volunteers from their unit with hearing challenges or other comprehension challenges are appropriately notified of any emergency communications.

During summer camp operations, the staff senior patrol leader has the primary responsibility for ensuring that camp staff with hearing challenges or other comprehension challenges are appropriately notified of any emergency communications.

The camp administration team has the backup responsibility for communications in the special situations listed above.

The camp ranger has the responsibility to maintain the camp communications systems.

#### **Accountability Procedure**

Campers attend camp with a Scouting unit led and supervised by a unit leader that is on site with them. In rare occasions, a youth may register alone as a "Maverick Scout". Maverick Scouts are then paired with a unit and unit leader. They camp and participate as part of the unit during their camp session. Each unit leader is required to maintain a roster of all participants from their unit on the camp property. Additionally, the camp maintains the roster of all participants and staff.

During an accountability check, each unit leader shall confirm that they can personally account for every member of their unit, youth and adult. Anyone missing during the accountability check shall be reported to the camp administration team. The search procedure should follow the process appropriate to the reason for the accountability check, typically the missing person procedure.

For camp staff, the staff senior patrol leader shall confirm that they can personally account for every member of staff and volunteers as part of the staff. For events with a larger staff, department heads may be used to account for the staff in their department and then reported up to the staff senior patrol leader. In the absence of a staff senior patrol leader position at the event, the camp program director or another member of the camp administration team shall be responsible for the staff accountability check. Anyone missing during the accountability check shall be reported to the camp administration team. The search procedure should follow the process appropriate to the reason for the accountability check, typically the missing person procedure.

### **Training**

The camp administration team shall provide annual training on this emergency action plan to all camp staff, volunteers, and professional staff. This training shall include

- a review of the physical locations for this plan,
- distributing an electronic version of this plan,
- a review of the evacuation routes within camp,
- and a review of the procedures outlined in this document.

Everyone taking this training shall sign an acknowledgement of the training. These acknowledgements should be maintained for 2 years or as otherwise required by law.

Campers and leaders must attend a mandatory safety orientation within 48 hours of the beginning of a camp session. This orientation shall cover the following topics:

- the camp's boundaries and any hazards present on the camp premises;
- camp evacuation routes and the muster area;
- behavioral expectations in an emergency event; and
- provides each camper developmentally appropriate instruction on the appropriate actions and procedures to follow in an emergency event.

Unit leaders should provide additional instruction to their campers or volunteers that may need additional information or have special needs to address. Unit leaders should also develop an evacuation plan for their campers with any special needs or concerns. The camp administration staff can provide additional support in this area also.

The council emergency preparedness coordinator shall review the annual emergency action plan training and safety orientation programs with the camp administration team prior to April 1<sup>st</sup> annually or upon any changes to this document.

### **Required Notification to Parents**

Longhorn Council must:

- Provide the most recent version of a youth camp's emergency plan (this plan) to the parent or legal guardian of:
  - a camper who is participating in a camp session; or
  - a camper who is registered to participate in a future camp session;

This Emergency Action Plan will be available on the Longhorn Council website with a link provided in the registration confirmation.

- Notify the parent or legal guardian of a camper described above if any area of the camp is located within a floodplain. The floodplain statement and acknowledgement form will be distributed and made available to unit leaders as part of their registration for summer camp.
- Ensure the parent or legal guardian signs and submits an acknowledging receipt of the floodplain notification. The acknowledgement form will be collected during the unit check in along with their health forms. No campers are permitted to remain at summer camp without their check-in forms completed.

### **Internet Service**

Worth Ranch is serviced by multiple Internet broadband providers which is then distributed to specific buildings and areas in camp.

- Cirra Networks – provides high speed broadband Internet access to the camp via three line of sight wireless connections from their tower in Palo Pinto (at the former Dempsey Army heliport)
- Starlink – provides satellite based high speed broadband access to the camp during summer camp operations only

Worth Ranch strives to provide a true outdoors and “unplugged” experience for all campers. Access to the camp’s Internet (wi-fi) services is limited to unit leaders and selected camp staff during summer camp operations. Guest access to wi-fi is generally available during events and weekend camping outside of the summer camp operations.

The camp ranger is responsible for the camp Internet service. The service provider contact information is located on the camp emergency contact list.

### **Emergency Preparedness Coordinator**

Ensure the emergency action plan training is sufficient and updated annually

Ensure that the Emergency Contact List is updated as appropriate

Coordinate that evacuation exits and routes are posted in all structures

Inspect at least annually the illumination of evacuation routes in camp

Ensure that this Emergency Procedures document is submitted to the Palo Pinto County Emergency Management Coordinator upon approval by the Texas Department of State Health Services.

Coordinate the inspection of the emergency preparedness components and equipment described in this document at least annually or more often as required by NCAP or other regulations and policies.

Maintain the emergency action plan training acknowledgements. Acknowledgements (the training roster) for staff shall be maintained by the Longhorn Council in the electronic file system with Scouting America’s national camp accreditation program (NCAP) submission files.

Note: During an actual activation of this emergency action plan, the activation shall be led by the *Incident Commander*. The emergency preparedness coordinator may also serve in that role if assigned by the camp administration team.

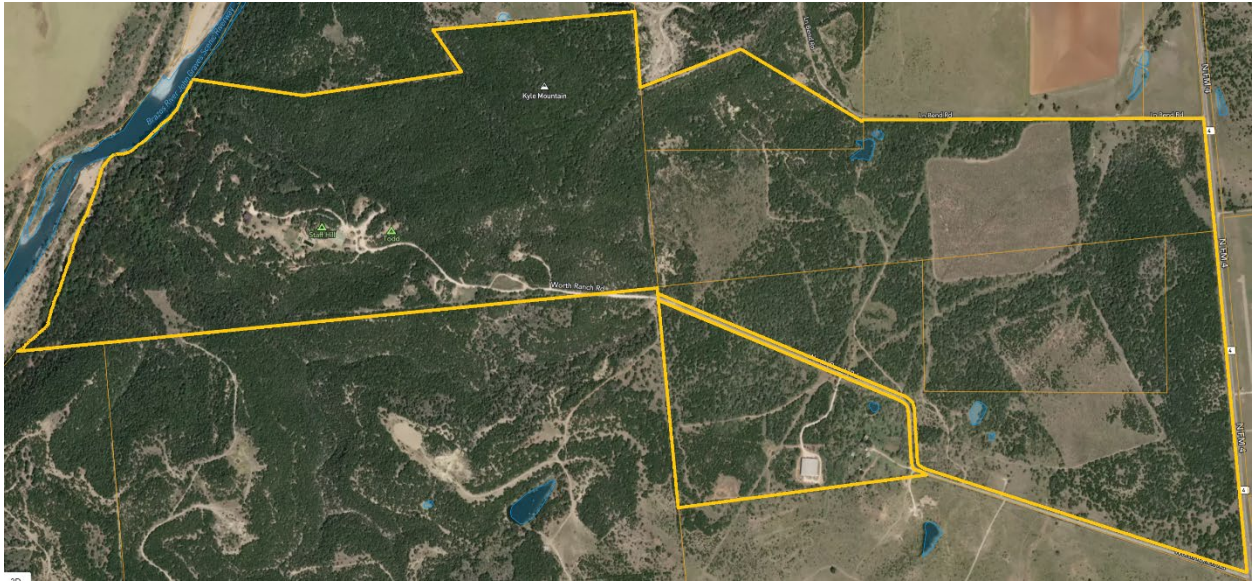
**Emergency Action Plan Updates**

Updates to this plan must be submitted to the Texas Département of State Health Services and the local emergency management coordinator anytime it is updated. Additionally, this plan must be submitted at least annually to the State. Upon approval of the plan by the Texas Department of State Health Services, this plan must be submitted to the local emergency management director or coordinator within 10 days of the State's approval.

## **Worth Ranch Emergency Contact List**

The annual WR contact list is included here by reference and is available in any location where this EAP document is stored.

## Worth Ranch Maps Including FEMA Flood Plain Overlays



*Overview Map of Worth Ranch*

Worth Ranch, located near Palo Pinto, TX in Palo Pinto County, is approximately 835 acres in total acreage. It is bordered by the Brazos River with 2,900 feet of waterfront and approximately 15 miles downstream of the Morris Sheppard Dam at Possum Kingdom Lake.

### FEMA Floodplain Definitions

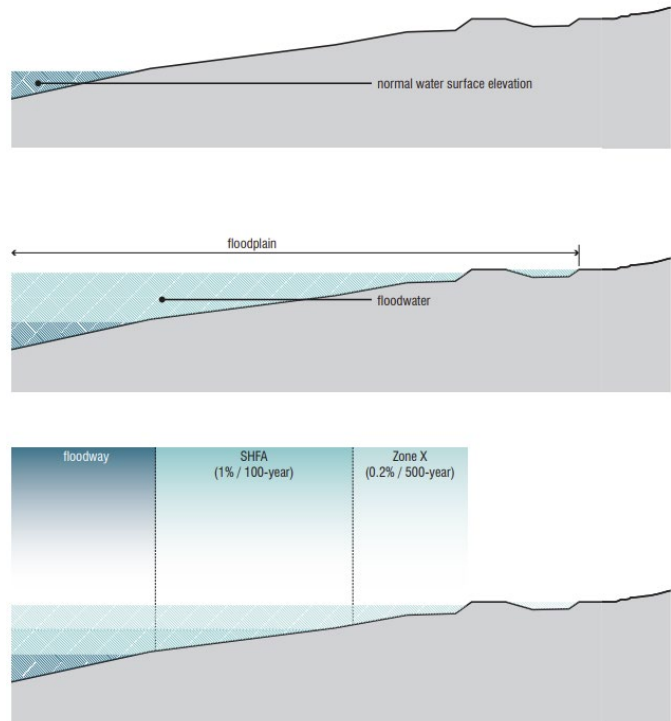
Floodway – the typical path a waterway flows at the normal water surface elevation

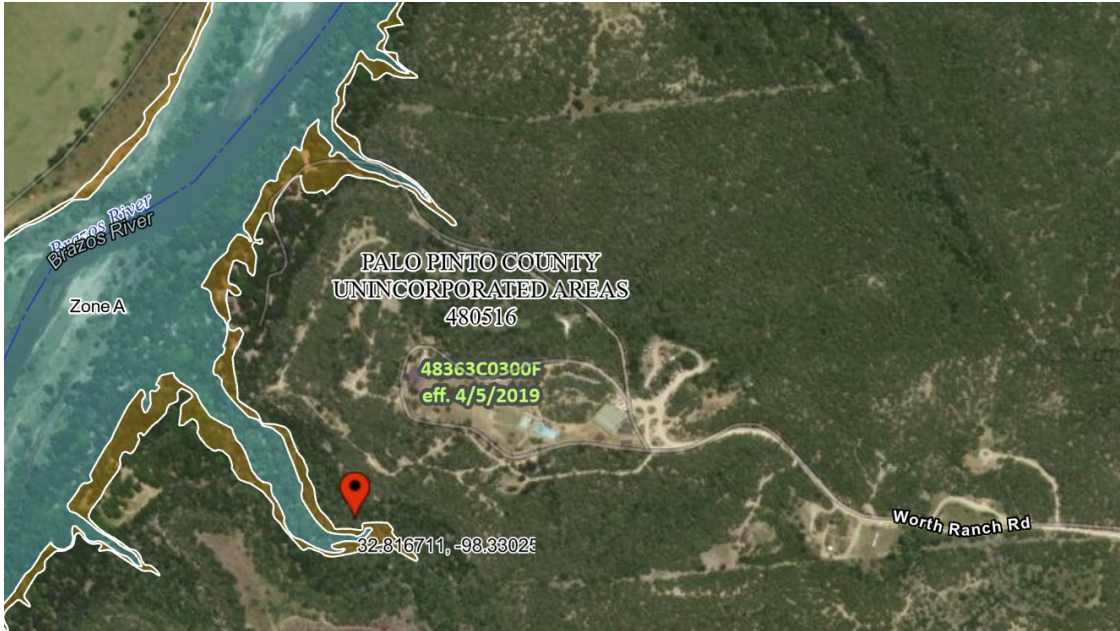
Floodplain – Floodplain means any area within a 100-year floodplain identified by FEMA.

Zone X – the area a waterway may cover during a 500-year or 0.2% event.

Texas state law requires the identification of any areas in a 100-year floodplain.

In the following maps, the 100-year floodplain is in light blue.





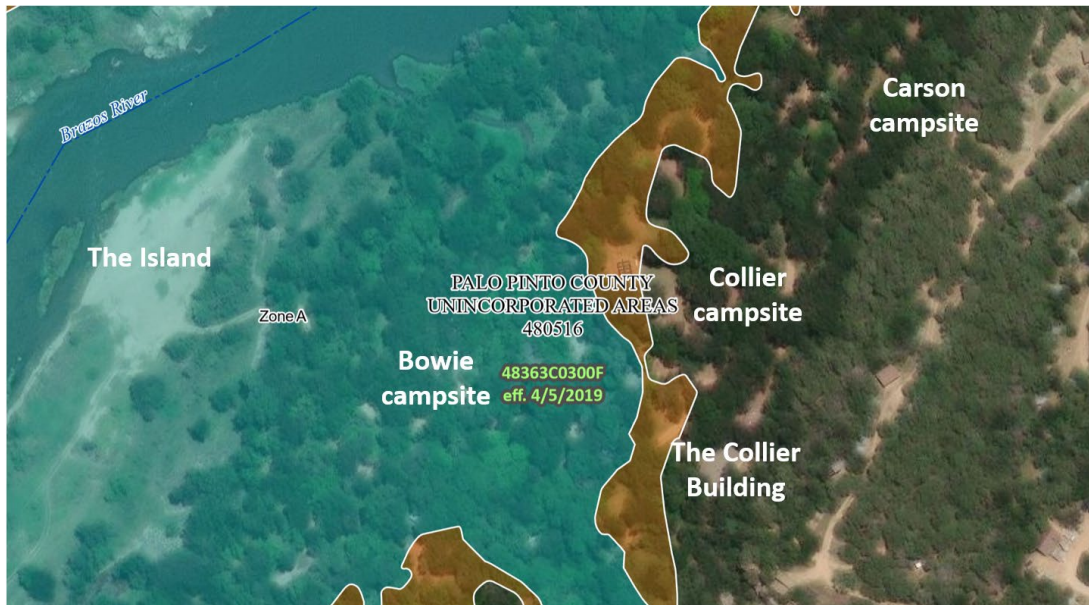
*Light blue is FEMA zone A (100 year). Brown is FEMA 0.2%*

The camp is physically divided into the upper and lower camp. The main camp consists of the central “upper” camp with the majority of buildings and activity areas. The lower camp is located closer to the river includes campsites and a program building. The southwestern quarter of the camp is only accessible by vehicle over a low water crossing.



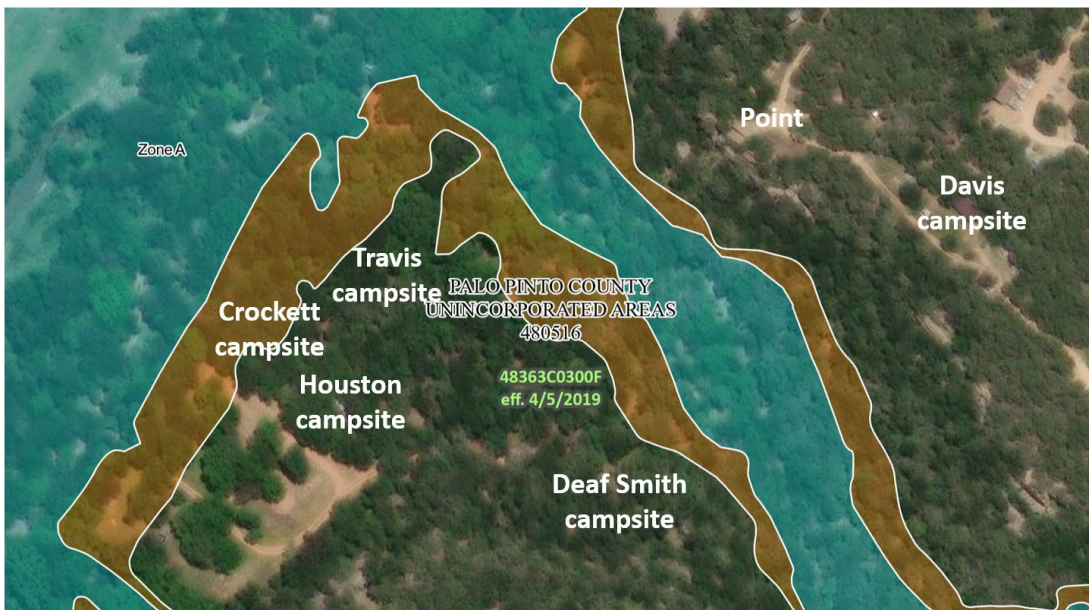
*Light blue is FEMA zone A (100 year). Brown is FEMA 0.2%*

This is the northwestern corner of the property. The marina would be inaccessible in a flood. Crawford’s way (the road to the lower portions of the camp) is not in the 100-year floodplain but is in the 0.2% zone. The Austin campsite is outside of the 100-year floodplain.



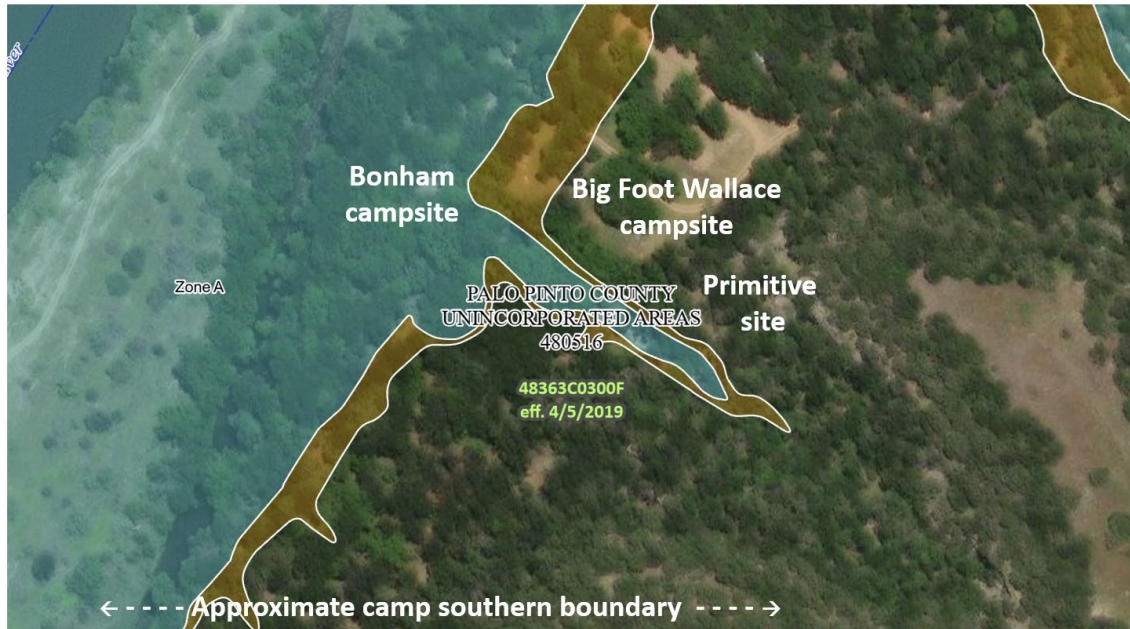
*Light blue is FEMA zone A (100 year). Brown is FEMA 0.2%*

The island would be inaccessible in a flood. Camping is not permitted on The Island. The Bowie campsite is in the floodplain, but other campsites and all buildings are outside the floodplain. The steps to the upper camp are outside the flood zone.



*Light blue is FEMA zone A (100 year). Brown is FEMA 0.2%*

The campsites and buildings are outside the floodplain, but they would be inaccessible via a vehicle from camp in the event of a flood. The Davis campsite and Point are in the upper camp and would not be impacted by river flooding. They are just shown for reference.



*Light blue is FEMA zone A (100 year). Brown is FEMA 0.2%*

The Bonham campsite is in the 100-year floodplain. Other campsites identified here are outside the floodplain, but they would be inaccessible via a vehicle from camp in the event of a flood. There are no cabins in the 100-year floodplain.

## Additional Information

### Texas Department of State Health Services Cross Reference Guide

Category	Reference (section in this document)
Floodplain Locations	Worth Ranch Maps Including FEMA Flood Plain Overlays (there are no cabins at camp)
Muster Zones	Camp Evacuation Routes and Internal Rally Point
Camper Accountability	Accountability Procedure General Assembly
Designated EPC	Emergency Preparedness Coordinator
Lost Camper Plan	Missing Person
Fire Plan	Fire at Camp
Severe Injury/Severe Illness/Serious Accident/Death Plan	Severe Injury, Severe Illness, or Serious Accident Death of a Participant, Staff, or Guest Epidemic (widespread sickness)
Aquatic Emergency Plan	Aquatic Emergencies
Epidemic Plan	Epidemic (widespread sickness)
Unauthorized Individual Plan	Unauthorized Person(s)
Transportation Emergency Plan	Transportation Emergencies
Natural Disaster Plan	Natural Disasters Including Weather Emergencies
Flash Flood Warning Evacuation Plan	Natural Disasters Including Weather Emergencies Flash Flood Warning or Flood Warning
Evacuation Plan	Camp Evacuation Plan
Evacuation Plan for NWS Notice	Camp Evacuation Plan
Shelter-in-Place Plan	Tornado Warning Shelter-in-Place Orders
Evacuation Routes Posting	There are no cabins on the property
Illuminated Evacuation Routes	Camp Evacuation Plan
Cabin Ladder	There are no cabins on the property
Emergency Plans to Staff	Training
Communication with Parents	Missing Person Camp Evacuation Plan Epidemic Emergency Notification Procedure (external) Required Notification to Parents
Parent Notification of Flood Plain	Required Notification to Parents
Parent Emergency Plan Provision	Required Notification to Parents
Communication with Local Emergency Management	Emergency Plan Updates Worth Ranch Emergency Contact List

Camp Administrative & Medical Services Staff Notification	Severe Injury, Severe Illness, or Serious Accident Epidemic Death of a Participant, Staff, or Guest Missing Person Fire at Camp Fire Outside Camp Camp Evacuation Plan Unauthorized Person Child Abuse & Kidnapping Natural Disasters Including Weather Emergencies (and all sub-sections)
Emergency Warning System / Public Address System	Emergency Communications Systems (internal)
Monitoring Safety Alerts	Natural Disasters Including Weather Emergencies Water release from the Morris Sheppard Dam and Possum Kingdom Lake
Operable Weather Radio	Natural Disasters Including Weather Emergencies
Internet Service / Broadband Service	Internet Service
Camper Safety Training	Training
Annual Staff Training and Maintaining Training Records	Training

Palo Pinto County Community Wildfire Protection Plan - <https://www.co.palo-pinto.tx.us/upload/page/0084/docs/Emergency/Signed%20Palo%20Pinto%20Co%20CWPP.pdf>