



## Emergency Action Plan

### Capitol Area Council Camps

**Lost Pines Scout Reservation (LPSR)**

785 FM 1441  
Bastrop Texas, 78602

**Griffith League Scout Ranch**

424 Oak Hill Cemetery Rd  
Bastrop, TX 78602

**Camp Tom Wooten**

785 FM 1441  
Bastrop Texas, 78602

**Camp Alma McHenry**

County Road 121  
Giddings, Texas 78942

**Smilin V Scout Ranch**

250 CR 286 Spur  
Liberty Hill, Texas 78642

**Roy D. Rivers Wilderness Camp**

FM 535 turn on CR 305  
Rosanky, TX 78953

**Camp Green Dickson**

Co Rd 354  
Shiner, TX 77984

**Ranger Contact Information:**

Lead Ranger, PJ Brown: (979) 417-6564  
LPSR Ranger, Charles Frentz: (806) 928-8920

*Document Revision Date: May 2026*

*Reviewed on an annual basis per OSHA and Texas Department of Health and Human Services (DSHS) guidelines*

*Distributed annually to:  
Bastrop County Emergency Management  
Gonzales County Emergency Management*

## Camp Muster Areas

**Lost Pines Scout Reservation:**

Muster Area: Parade ground  
Secondary Muster Area: Front gate by ranger office

**Camp Tom Wooten:**

Muster Area: Parade ground  
Secondary Muster Area: Front gate by ranger office

**Smilin V Scout Ranch:**

Muster Area: Parade ground  
Secondary Muster Area: Front gate

**Camp Green Dickson:**

Muster Area: Parade ground  
Secondary Muster Area: Front gate

**Griffith League Scout Ranch:**

Muster Area: Climbing pavilion  
Secondary Muster Area: Front gate

**Camp Alma McHenry:**

Muster Area: Open area by old ranch house  
Secondary Muster Area: Front gate

**Roy D. Rivers Wilderness Camp:**

Muster Area: Open area near water  
Secondary Muster Area: Front gate

See Appendix 1 of this document for [Capitol Area Council Evacuation Plans](#)

## Definitions

Camp Director	Camp director is being used interchangeably with coordinator and event lead.
Campers	Used interchangeably with participants.
Emergency Plan Coordinator (Coordinator)	<p>The coordinator is the designated leader for the council or district event (e.g., camp director, event lead). The coordinator is the person making decisions or taking actions pursuant to this plan.</p> <p>For purposes of Capitol Area Council licensed camps, the Coordinator is Toni Nelson (<a href="mailto:txtoni13@gmail.com">txtoni13@gmail.com</a>), Camp Director.</p>
Emergency Plan Manager (Manager)	<p>The lead ranger will also act as the manager, unless an alternative is assigned by the Capitol Area Council Scout Executive or the Director of Support Services.</p> <p>For purposes of Capitol Area Council licensed camps, the Emergency Plan Manager is Ron Settele (<a href="mailto:ron.settele@scouting.org">ron.settele@scouting.org</a>), Director of Support Services, Capitol Area Council.</p>
Event Lead	Event lead is being used interchangeably with camp director and coordinator.
Participants	Used interchangeably with campers.
Staff	Staff is being used for contracted staff and vendors, and volunteers.

## **Table of Contents**

Overview.....	1
Capitol Area Council Camp Locations .....	2
Area of Responsibility .....	3
Evaluation of this Emergency Action Plan .....	6
Use of this Emergency Action Plan.....	7
Appendix 1: Capitol Area Council Evacuation Plans.....	8
Lost Pines Scout Reservation Severe Weather, Flood, and Wildfire Evacuation Plan .....	9
Camp Tom Wooten Severe Weather, Flood, and Wildfire Evacuation Plan.....	13
Smilin V Scout Ranch Severe Weather, Flood, and Wildfire Evacuation Plan.....	15
Camp Green Dickson Severe Weather, Flood, and Wildfire Evacuation Plan .....	17
Griffith League Scout Ranch Severe Weather, Flood, and Wildfire Evacuation Plan.....	19
Camp Alma McHenry Severe Weather, Flood, and Wildfire Evacuation Plan .....	20
Appendix 2: Emergency Stages.....	21
Appendix 3: Camper Security .....	22
Appendix 4: Dangerous Wildlife .....	24
Appendix 5: Fire Incidents .....	25
Appendix 6: Hazardous Materials Exposure .....	27
Appendix 7: Medical Emergencies .....	28
Appendix 8: Missing Person Incidents.....	30
Appendix 9: Aquatic Emergencies .....	32
Appendix 10: Active Shooter .....	34
Appendix 11: Severe Weather Incidents .....	37
Appendix 12: Shooting Sports Incident .....	40
Appendix 13: Capitol Area Council Communication Plans.....	41
Lost Pines Scout Reservation Phone List .....	42
Camp Tom Wooten Phone List.....	43
Smilin V Scout Ranch Phone List.....	44
Camp Green Dickson Phone List.....	45
Griffith League Scout Ranch Phone List.....	46

**Emergency Action Plan  
Capitol Area Council Camps**

Camp Alma McHenry Phone List .....47  
Roy D. Rivers Wilderness Camp Phone List..... 48  
Appendix 14: Transportation Emergencies ..... 49  
Appendix 15: Epidemic Plan..... 50

## **Overview**

The objective of the Capitol Area Council (CAC) Emergency Action Plan (EAP) is to comply with the Occupational Safety and Health Administration's (OSHA) Emergency Action Plan Standard, 29 CFR 1910.38, and Fire Prevention Plan (29 CFR 1910.39), Texas Health and Safety Code Chapter 141 and Texas Administrative Code Chapter 265, and prepare staff, participants, and campers to deal with emergency situations.

Ladders for cabins are not applicable at Lost Pines Scout Reservation, pursuant to Texas Health and Safety Code Chapter 141 and Texas Administrative Code Chapter 265, in that all cabins are more than 1000' from a FEMA designated flood zone.

Additionally, this EAP is designed to comply with the National Camp Accreditation Program (NCAP) of Scouting America.

This EAP is designed to minimize injury and loss of human life and resources by training staff, participants, and campers, procuring and maintaining necessary equipment, and assigning responsibilities. This EAP represents a completed assessment of risks to staff, participants, and campers and serves as a written guide for emergency procedures used to address those risks.

## Capitol Area Council Camp Locations

**Lost Pines Scout Reservation**

785 FM 1441  
Bastrop Texas, 78602

**Camp Tom Wooten**

785 FM 1441  
Bastrop Texas, 78602

**Smilin V Scout Ranch**

250 CR 286 Spur  
Liberty Hill, Texas 78642

**Camp Green Dickson**

Co Rd 354  
Shiner, TX 77984

**Griffith League Scout Ranch**

424 Oak Hill Cemetery Rd  
Bastrop, TX 78602

**Camp Alma McHenry**

County Road 121  
Giddings, Texas 78942

**Roy D. Rivers Wilderness Camp**

FM 535 turn on CR 305  
Rosanky, TX 78953

## **Area of Responsibility**

### **1. Emergency Plan Manager (Manager)**

The lead ranger will act as the manager, unless an alternative is assigned by the Capitol Area Council Scout Executive or the Director of Support Services.

For purposes of Capitol Area Council licensed camps, the Emergency Plan Manager is Ron Settele ([ron.settele@scouting.org](mailto:ron.settele@scouting.org)), Director of Support Services, Capitol Area Council.

The manager will be responsible for:

- a. Scheduling annual tests of the emergency notification system with the appropriate authorities.
- b. Coordinate with local emergency response personnel and the local emergency manager to ensure they are familiar with this plan.
- c. Providing all staff members internet access to the plan (or a hard copy if the staffer has no internet access) and training each staff member on this plan during staff development training prior to camp.
- d. Maintaining staff and camper training records pertaining to this plan.
- e. Providing parents or next of kin have access to floodplain maps and this Emergency Action Plan by posting the plan on the Capitol Area Council website and, prior to camp participation, obtaining a signed acknowledgement from each parent and guardian that they have been provided access to the plan and flood plain map for their review.
- f. Monitoring internet services and availability at camp.
- g. Providing the most current Emergency Action Plan to the local Emergency Management office prior to the operation of any licensed camp and, further, providing any updated plan to the local Emergency Management office as soon as possible after revision.

### **2. Emergency Plan Coordinator (Coordinator)**

The coordinator is the designated leader for the council or district event (e.g., camp director, event lead). The Coordinator is the person making decisions or taking actions pursuant to this plan. The Coordinator is also responsible for implementation of this plan at the event or camp, making all notifications including coordinating with the Local Emergency Management personnel on specific emergencies and for conducting all training related to this plan.

For purposes of Capitol Area Council licensed camps, the Coordinator is Toni Nelson ([txtoni13@gmail.com](mailto:txtoni13@gmail.com)), Camp Director.

### **3. Emergency Warning/Public Address System**

For purposes of our licensed camps at LPSR, the camp ranger is responsible for the maintenance of the Emergency Warning System/Public Address System. This system is located at the Administration Building (A Building) and is operated electronically without reliance on the internet. This manual system is designed to alert audibly to all camping and program areas utilized at our licensed camp.

This plan calls for the Coordinator, or their designee, to manually activate the alarm in the event that all campers are to be called to the muster area. If there are campers that are hearing impaired, the coordinator will arrange for a staff member to retrieve those persons to the muster area.

### **4. Internet Providers**

Lost Pines Scout Reservation (LPSR), our only licensed camp, utilizes AT&T as its primary internet provider for end-to-end fiberoptic service. The secondary broadband service is through Starlink.

### **5. Contractors, Vendors, or Outside Instructors**

Contractors, vendors, or outside Instructors are responsible for complying with this plan and will be provided training or direction from the staff assigned to manage them.

### **6. Campers/Participants**

The Emergency Plan coordinator will ensure the participating unit leadership is aware of the plan and the location, content, and procedures described in this document.

For purposes of Capitol Area Council licensed camps at LPSR, developmentally appropriate training for all campers is to be conducted within 48 hours of the beginning of the camp session to include actions and procedures to follow in an emergency event and cover at least the following topics:

- a. The emergency alarm sound and where the alarm is located
- b. Muster area(s) for when the alarm sounds.
- c. Instructions on behavioral expectations during an emergency
- d. Who is responsible for conducting headcount and relaying emergency response information and directives
- e. Camp boundaries and hazards

### **7. Staff Training and Records**

Prior to the beginning of any camp (short-term or long-term camp), the Emergency Plan coordinator or designee will provide emergency action plan training for staff to include the following topics:

- a. Anticipated types of potential emergency conditions
- b. The method for alerting the staff, participants, and campers of an emergency condition. The camp's emergency alarm device its location and use.

- c. Location of the camp health officer.
- d. Location of the designated muster areas.
- e. Instructions on conducting head counts and assessments of the physical well-being of everyone once assembled.
- f. Assigning emergency response tasks, such as establishing communications with outside authorities, providing first aid, forming, and initiating searches, relocating everyone to secure and safe areas, inspecting facilities and grounds for damage, coordinating orderly and safe camp evacuation.

Staff EAP training records will be maintained by the Coordinator for long-term camp staff and will provide the names and date of training. These records will be maintained with Scouting America's National Camp Accreditation Program (NCAP) training records. No record retention is required for short-term (non-licensed) camps.

#### **8. Drills Fire/Emergency Response**

*Long-Term Camp:* Within 24 hours of providing emergency training to unit leaders, the ranger/coordinator or designee will conduct a camp wide emergency response test by sounding the alarm and oversee the assembly of units and head counting procedures.

*Short-Term Camp:* Unit leaders will be advised at check-in of emergency response procedures provided by the coordinator or their designee.

#### **9. Contact or notification at camp**

Whenever it is required that contact be made to any person, including but not limited to, the coordinator or medical officer, at camp, that notification should be made as expeditiously as possible and can be by phone, radio or in person.

## **Evaluation of this Emergency Action Plan**

This plan will be evaluated by the Risk Management Committee, ranger(s), NCAP chair, and long-term camp director.

This plan has been submitted to, and approved by, Bastrop County Emergency Management.

## **Use of this Emergency Action Plan**

This plan includes individual appendices for emergency events and phone lists for every Capitol Area Council camp. The purpose for the sections is two-fold:

- a. The individual appendices for emergency events are available so the coordinator can have the appropriate section available to them at the time needed.
- b. The individual appendices for the phone listings allow for printing and posting in appropriate areas where people are gathered or where potential issues may arise.

## Appendix 1: Capitol Area Council Evacuation Plans

[Capitol Area Council Evacuation Plans](#)

## Lost Pines Scout Reservation Severe Weather, Flood, and Wildfire Evacuation Plan

### **Severe Weather:**

If severe weather necessitates an evacuation at camp, this protocol will be followed. See Appendix 10 for a complete description of the severe weather protocol leading to an evacuation decision.

### **Flash Flood:**

The floodplain at Lost Pines Scout reservation is limited to the shoreline area of Lake Bastrop and does not affect camping and most activity areas. If, however, a flash flood warning is issued, the protocols relating to wildfire as set forth below will be followed. See Appendix 10 for a complete description of the severe weather protocol leading to an evacuation decision.

### **Fire:**

If a fire is out of control, send a runner to the Ranger or notify a staff member. Also send a runner to the nearest camp alarm. This will either be the Administration Building or Lindsay Lodge or the location designated by the program leader.

See Appendix 5 for a complete description of the fire protocol leading to an evacuation decision.

### **Evacuation Plan:**

If a camp emergency alarm is sounded by camp personnel (siren at the A Building but can also be communicated by staff members) all campers and staff will muster as quickly as possible in the designated muster area.

The primary designated muster area is the parade ground at the dining hall. If this muster area is deemed unusable, the secondary muster area is the front gate by the Ranger office. See map below for locations.

The Coordinator shall conduct headcounts at the designated muster area utilizing staff to assist as necessary. Each unit shall provide a roster for this purpose. The Coordinator will maintain the master roster for any event.

In the event an evacuation is being considered or ordered for camp, the Coordinator will notify 911 and Bastrop County Emergency Management.

If necessary, the Coordinator shall give the evacuation order and evacuation route instructions. Evacuation will take place from the designated muster area.

If an evacuation is ordered the first option for evacuation is by utilizing the private vehicles on camp belonging to units and volunteers who brought the campers. Staff member vehicles may be used if necessary to transport remaining campers to the reunification location, Lost Pines Elementary School at 151 Tiger Woods Drive in Bastrop is the reunification location.

Evacuation shall take place by the primary access road to camp. Should the primary road be blocked by fire, flood, downed trees, or power lines, the Coordinator will order that the evacuation take place by walking to Lost Pines Elementary School at 151 Tiger Woods Drive in Bastrop via the secondary evacuation route as noted on the attached map. Evacuation routes

## Emergency Action Plan Capitol Area Council Camps

are illuminated by solar lights to guide evacuees although staff members will be assigned to lead the campers from the muster area along the secondary route to Lost Pines Elementary School.

Bastrop Independent School District may also be called to provide bus services from the muster area or the secondary egress point on camp to Lost Pines Elementary School at 151 Tiger Woods Drive in Bastrop. The Council has a memorandum of understanding with Bastrop Independent School district for this purpose.

The emergency evacuation route and secondary evacuation route are posted in cabins and buildings and on bulletin boards throughout camp.

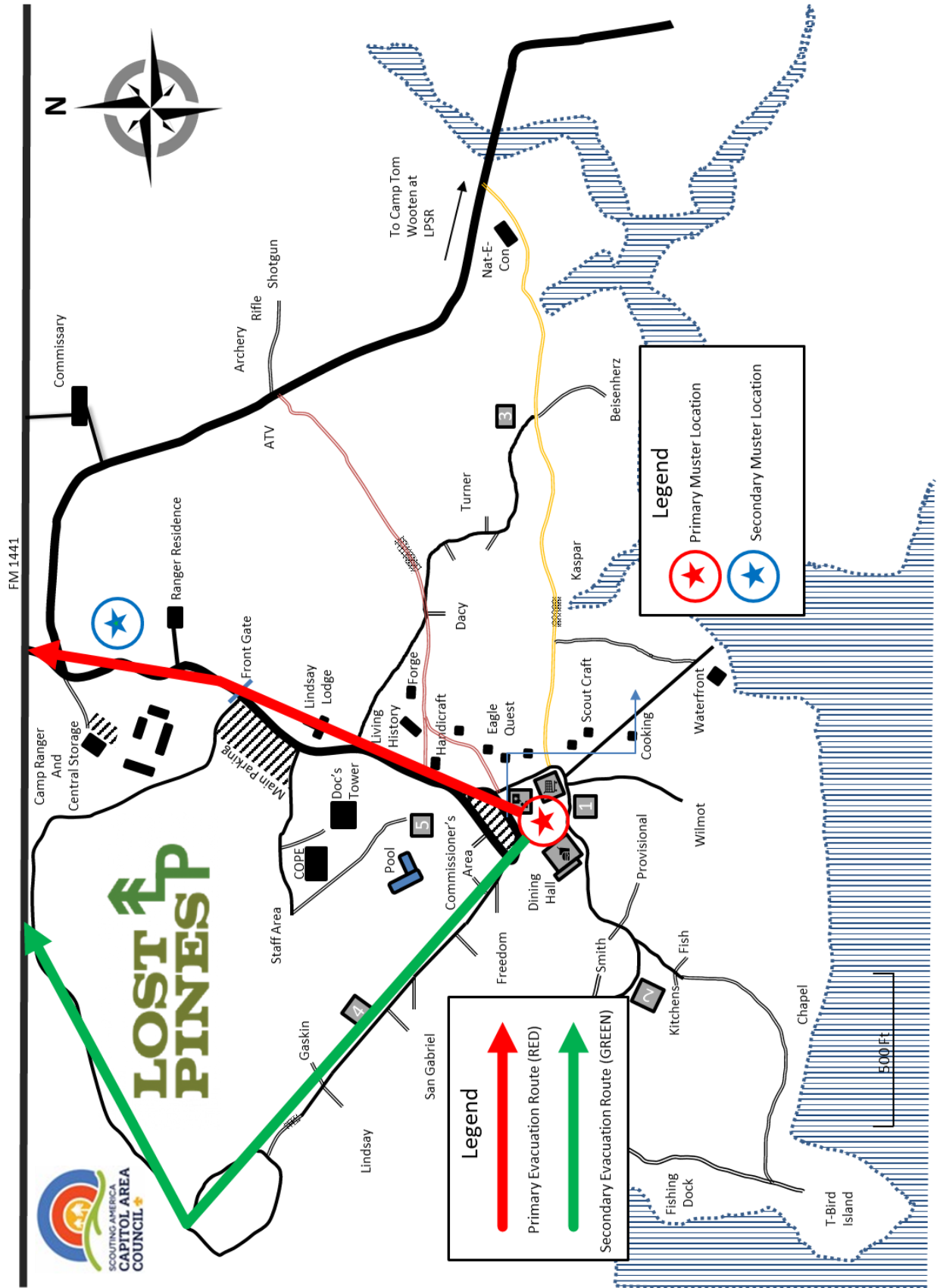
In the event an evacuation is necessary via the secondary evacuation route by walking, the Coordinator will make arrangements for any individuals with disabilities or functional needs to be evacuated by personal vehicle or other means coordinating such needs, if necessary, with local authorities and Bastrop Emergency Management.

If evacuation is accomplished completely with personal vehicles to home without the necessity for stopping at a reunification point, contact with the parents will be made by the unit leaders taking them home.

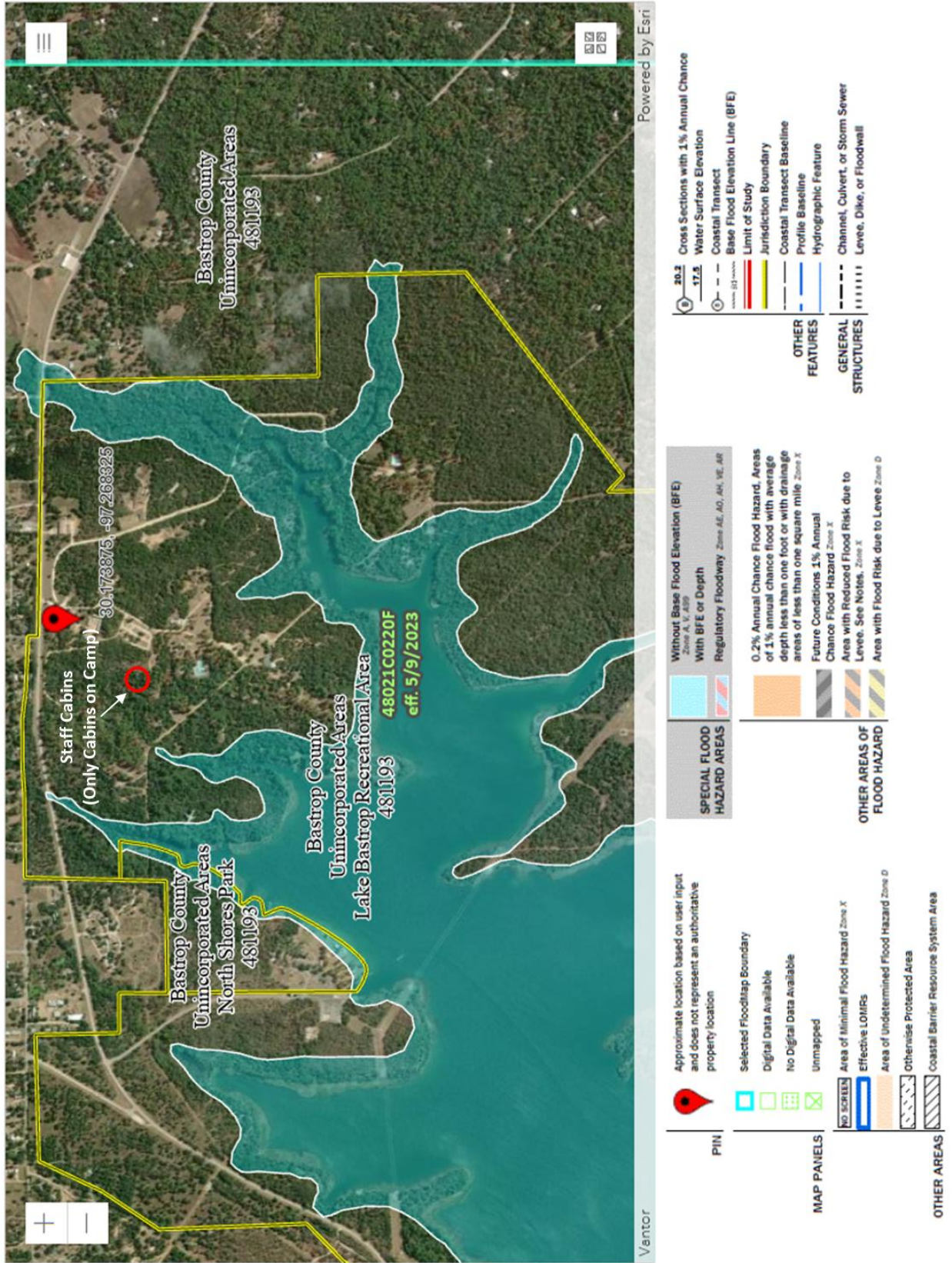
If it is necessary to transport campers to the reunification location, the Coordinator is responsible for ensuring contact is made with parents or guardians of the youth concerning the evacuation and the location of the reunification point. This contact will be made using retained camp rosters by assigning staff members to make phone calls with the campers to their parents or contact person. The Coordinator will ensure there is sufficient staffing at the reunification point to supervise campers until they are all reunited with their parents, guardians or contact persons.



# Emergency Action Plan Capitol Area Council Camps



# Emergency Action Plan Capitol Area Council Camps



## Camp Tom Wooten Severe Weather, Flood, and Wildfire Evacuation Plan

Know whether burn restrictions are in place and follow them. Know and use the unit fireguard chart and post it each day. Make sure campfires are “cold out” when done (you can put your hand on it without burning).

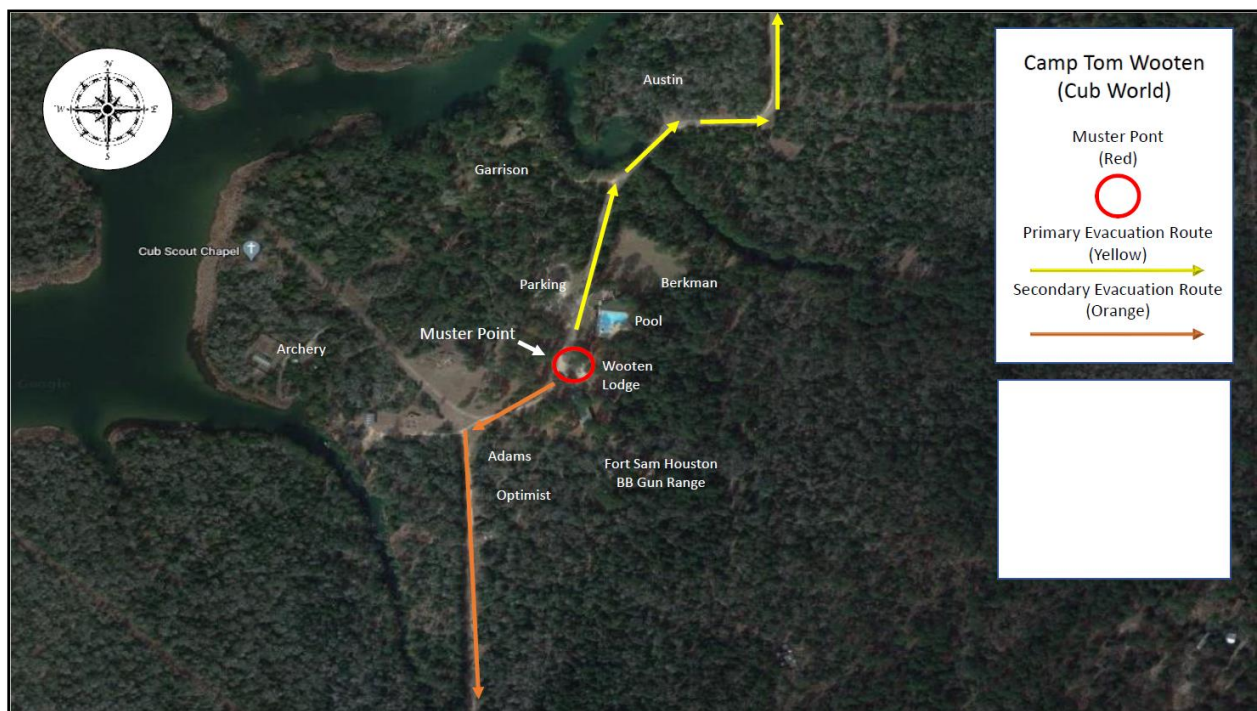
If you spot a fire and can put it out safely and quickly, do so. Notify the ranger or a staff member.

If a fire is out of control, send a runner to the ranger or notify a staff member. Also send a runner to the nearest camp alarm. This will be Hagn Lodge or the location designated by the program leader. Make sure your program designates a camp alarm location.

If a camp emergency alarm is sounded by camp personnel, (usually air horn over a megaphone but can be communicated by staff members) all campers and staff will muster as quickly as possible in the designated muster area. See attached map.

The designated muster area is the flagpole at Hagn Lodge or other designated location specified by the program leader. See the map below.

The ranger, Coordinator shall coordinate headcounts at the designated muster area. Each unit should maintain a roster for this purpose.



**Emergency Action Plan  
Capitol Area Council Camps**

If necessary, the ranger, Coordinator shall give the evacuation order and route instructions. Evacuation will take place from the designated muster area. Evacuation shall take place by the primary access road to camp. Should the primary road be blocked by fire, flood, downed trees, or power lines, then evacuation shall take place via secondary evacuation routes as noted on the attached map.

The emergency evacuation escape route and secondary evacuation routes are also posted on bulletin boards throughout camp.

## Smilin V Scout Ranch Severe Weather, Flood, and Wildfire Evacuation Plan

Know whether burn restrictions are in place and follow them. Know and use the unit fireguard chart and post it each day. Make sure campfires are “cold out” when done (you can put your hand on it without burning).

If you spot a fire and can put it out safely and quickly, do so. Notify the Camp Ranger or a staff member.

If a fire is out of control, send a runner to the Ranger or notify a staff member. Also send a runner to the Ranger’s house. Make sure your program designates a camp alarm location.

Know the location of all firefighting equipment at your campsite and make sure it is not used for any other purpose.

If a camp emergency alarm is sounded by camp personnel, (airhorn) all campers and staff will muster as quickly as possible in the designated muster area. See attached map.

The designated muster area is east side of the big pavilion.

If members are to muster at the designated muster area, firefighting equipment should be assembled as well, to be used as a defense for the movement of personnel.

The Camp Ranger, Camp Director or program leader shall coordinate headcounts at the designated muster area. Each unit should maintain a roster for this purpose.

If necessary, the Camp Ranger, Camp Director or program leader shall give the evacuation order and route instructions. Evacuation will take place from the designated muster area.



## **Emergency Action Plan Capitol Area Council Camps**

Evacuation shall take place by the primary access road to camp. Should the primary road be blocked by fire, flood, downed trees, or power lines, then evacuation shall take place via secondary evacuation routes as noted on the attached map.

The emergency evacuation escape route and secondary evacuation routes are also posted on bulletin boards throughout camp.

If there is a flash flood and evacuation is unsafe, all persons will remain in the muster area pending later evacuation.

## Camp Green Dickson Severe Weather, Flood, and Wildfire Evacuation Plan

Know whether burn restrictions are in place and follow them. Know and use the unit fireguard chart and post it each day. Make sure campfires are "cold out" when done (you can put your hand on it without burning).

If you spot a fire and can put it out safely and quickly, do so. Notify the Camp Ranger or a staff member.

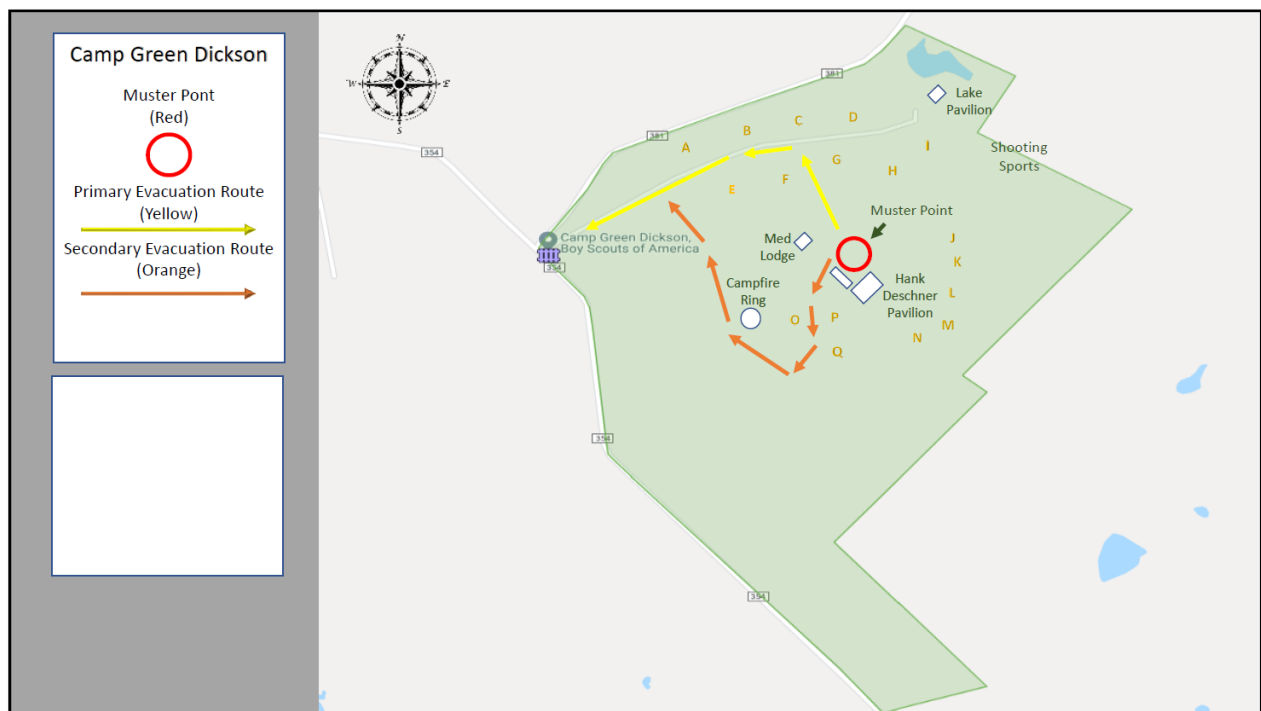
If a fire is out of control, send a runner to the Ranger or notify a staff member. Also send a runner to the nearest camp alarm. This will either be Medical Lodge or the location designated by the program leader. Make sure your program designates a camp alarm location.

Know the location of all firefighting equipment at your campsite and make sure it is not used for any other purpose.

If a camp emergency alarm is sounded by camp personnel, air horn over megaphone, all campers and staff will muster as quickly as possible in the designated muster area. See attached map.

The designated muster area is the parade ground in front of the pavilion or other designated location specified by the program leader. See the attached map.

If members are to muster at the designated muster area, firefighting equipment should be assembled as well, to be used as a defense for the movement of personnel.



## **Emergency Action Plan Capitol Area Council Camps**

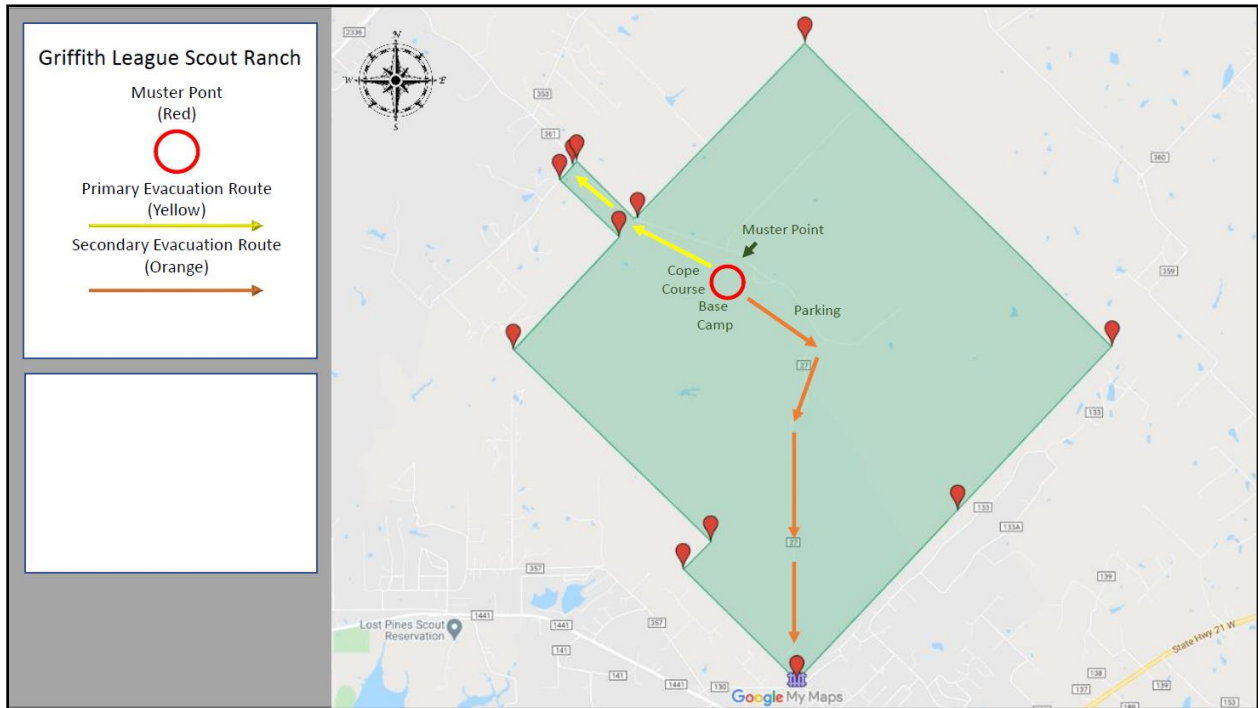
The Camp Ranger, Camp Director or program leader shall coordinate headcounts at the designated muster area. Each unit should maintain a roster for this purpose.

If necessary, the Camp Ranger, Camp Director or program leader shall give the evacuation order and route instructions. Evacuation will take place from the designated muster area.

Evacuation shall take place by the primary access road to camp. Should the primary road be blocked by fire, flood, downed trees, or power lines, then evacuation shall take place via secondary evacuation routes as noted on the attached map.

The emergency evacuation escape route and secondary evacuation routes are also posted on bulletin boards throughout camp.

# Griffith League Scout Ranch Severe Weather, Flood, and Wildfire Evacuation Plan



# Camp Alma McHenry Severe Weather, Flood, and Wildfire Evacuation Plan



## Appendix 2: Emergency Stages

When an emergency arises and the entire camp or event must have a headcount, personal accountability includes actions by unit leaders and the coordinator.

Capitol Area Council has a three-stage plan for emergency incidents.

### Stage 1

Units are expected to stay in their current location and upon direction from the coordinator or their designee:

- a. The unit leader accounts for all in their unit and makes note of who is missing and their last known location.
- b. Reports this information back to the coordinator or their designee.
- c. Keeps their unit in place until further orders or directions are given.

### Stage 2

Units are expected to quickly travel to the muster location and upon direction from the coordinator or their designee:

- a. The unit leader accounts for all persons in their unit and makes note of who is missing and their last known location.
- b. Reports this information back to the coordinator or their designee.
- c. Keeps their unit in place at the muster area until further direction is given.

### Stage 3

Camp is being evacuated to a secondary location or released to go home. The coordinator or their designee is to report all accounted for and the names of any missing.

- a. The unit leader accounts for all in their unit and makes note of who is missing and their last known location.
- b. The **unit leader** reports this information back to the coordinator or their designee.
- c. Units are expected to travel quickly home or to the off-site location.

The coordinator is responsible for staff, visitors, participants, and campers. They must provide a list of the missing to the emergency first responder (the lead fire officer, lead police officer, etc.).

The Coordinator is responsible for ensuring contact is made with parents or guardians or next of kin concerning an evacuation or at a reunification point following an evacuation. This notification can be made by phone with the assistance of staff members.

The coordinator must also inform the staff advisor, or the scout executive, a summary of the event and a list of missing and or unaccounted persons.

## Appendix 3: Camper Security

**NOTE:** Depending on the incident, the emergency incident may cause the coordinator to:

- Notify 911
- Notify the staff adviser / scout executive
- Complete a Scouting America Incident Report

Families sending their children to Scouting America camps expect that Scouting America will exercise due care for the security of their children. To mitigate the risk of any unauthorized release of a camper from camp, and against any unauthorized person from being at camp, the following must be followed:

- a. Signs must be posted along the entryway reminding all visitors to sign in at a designated spot, such as registration or the Administrative Building.
- b. A sign in/out logbook is maintained for the event.
- c. Wristbands (or some designation) shall be issued to everyone that has checked in.
- d. For events where units are coming together, unit rosters are collected at check in and all youth and adults are issued a wrist band indicating that they have checked in.
- e. If any person is identified as not properly checked in (no wristband), then they must be escorted to the designated area to verify that they have permission to be on camp and to get properly signed in.
- f. All staff members wear something that designates them as staff, such as a name badge.

### Check In:

All staff, participants, and campers will be checked in by staff when they arrive, either by a parent/guardian or by their unit leader if the camp is unit-based.

- a. During check-in, staff will review Scouting America Annual Health and Medical Record.
- b. Staff should be aware that certain custody disputes may involve court orders or other directions from the legal guardian to prohibit specific people from picking up a youth from camp, including another parent.

### Leaving The Event Early

#### **Participants:**

- a. All participants (youth and adults) must sign out at the designated place / Administration Building if departing prior to the end of the event.
- b. Campers can only be released to the individual(s) listed on the Scouting America Annual Health and Medical Record. The person seeking to take possession of the camper shall have a valid government issued form of identification.
- c. For troops attending district or council events:
  - I. The unit leader must be aware of the person leaving and their expected return time.

## Emergency Action Plan Capitol Area Council Camps

- II. All youth must have a unit leader with them to sign out (depart the camp). The unit leader is responsible for confirming who the youth is departing with and if they are approved. A camper release form is required for all youth departing prior to the end of camp term.
- d. For long-term camp staff under the age of 18, they must have written permission from their parents/guardians to leave the camp with another staff member.

### **Unauthorized Persons:**

If any staff, participants, and campers observe an unauthorized person entering camp, they are not to approach the person under any circumstances. The staff, participant, and camper should immediately alert the coordinator or ranger to the location of the unauthorized person. This should be done directly without alerting any other staff members or campers.

- a. Once the coordinator or ranger is alerted, they will take the necessary action.
- b. The coordinator will take no less than two (2) other staff members and proceed to the last location the person was seen.
- c. The Coordinator will direct staff to lead campers away from the unauthorized person.
- d. While the coordinator and staff approach the person there will be at least one other staff member in the camp office who is in radio contact with the director.
  - I. If the unauthorized person is one that is to be escorted off the camp property with additional assistance (police, country sheriff), the staff member in the office will contact 911.
- e. The coordinator or ranger will speak to the unauthorized person to determine the identity of the person and why they are in camp.
- f. If it is determined that the person would be approved to be in camp (parent, troop leader), the director will tell the camp office to lower the warning.
  - I. To determine if the person is to be in camp, the director will check the person's driver's license and confirm with the unit leader.
- g. The person will be escorted to the designated area to be formally authorized to be in camp.

The coordinator will review any unauthorized entrant at the weekly staff meeting and adjust procedures to ensure protection of campers.

## Appendix 4: Dangerous Wildlife

**NOTE:** Depending on the incident, this event may cause the coordinator to:

- Notify the staff advisor / scout executive
- Complete a Scouting America Incident Report if it involves an injury

If you see a dead animal, or an animal acting in a strange manner, leave the area and notify the coordinator or camp staff. Do not approach the animal.

If an injury occurs with an animal, contact the Coordinator immediately and refer to the Capitol Area Council's Health Policy and Procedure Manual for guidance.

## Appendix 5: Fire Incidents

**NOTE:** Depending on the incident, this event may cause the coordinator to:

- Contact 911
- Notify the scout executive
- Complete a Scouting America Incident Report

The Coordinator or his designee will monitor emergency alerts on a 24-hour basis, including for fires, through the website [warncentraltexas.org](http://warncentraltexas.org). This service is available on the internet or through a phone app called Everbridge at [www.everbridge.com](http://www.everbridge.com).

Capitol Area Council reserves the right to limit or ban fires on camp at any time. The ranger/coordinator will know whether any burn ban restrictions are in place.

Under no circumstances will anyone attempt to fight a fire that has passed the incipient stage (that can be put out with a single fire extinguisher), nor will anyone attempt to enter a burning building to conduct search and rescue. These actions will be left to emergency services professionals.

### Campsite Fires

- Fires are only allowed in existing fire rings
- Each troop will post a Unit Fireguard Chart in the campsite. It is the responsibility of the unit leader to train campers/participants in the use of the fire plan, fire prevention, fire detection, reporting and fire control.

### Unattended Fires

- If the fire is small and able to be suppressed with available equipment, put the fire out and; notify the ranger or coordinator about the location of the fire. If a fire is out of control, send a runner to the Ranger or notify a staff member. Also send a runner to the nearest camp alarm location. This will be the administrative area for the program.
- If the fire is large and unable to be suppressed with available equipment, see protocol below for structure fires and wildfires on camp.

### Structure Fires and Wildfires on Camp

- The coordinator will notify 911, the ranger, and call county Emergency Management personnel.
- If necessary, the coordinator or their designee will utilize the camp public address system and sound the emergency signal for all staff, participants, and campers to assemble at the muster area to await instructions from the coordinator. The Coordinator will assign staff members to escort campers to the muster area.
- The camp health officer will remain in the health lodge for medical assistance if it can be safely done. If not, the camp health officer will report to the muster area.
- The coordinator will designate staff member to meet the fire personnel at the camp gate and lead them to the fire location.

## **Emergency Action Plan Capitol Area Council Camps**

- e. The coordinator may ask camp staff to form a fire-blocking team (working as a defensive team to support evacuation of the camp), if needed, and can be done safely, to help maintain a safe path for evacuation of camp.
- f. The coordinator will account for all staff, participants, and campers at the muster area.
- g. If evacuation of the camp is required, the evacuation protocol in Appendix 1 will be followed.
- h. The ranger, with the professional fire-fighting lead, will determine when it is safe to return to the area. The ranger will conduct an inspection of camp structures to verify safe entry.

### **Wildfires off Camp**

- a. The coordinator will monitor the fire danger situation and consult with the ranger and local Emergency Management authorities on fire movement.
- b. If necessary, the coordinator or their designee will use the emergency public address system and sound the emergency signal for all staff, participants, and campers to assemble at the muster area and await instructions from the coordinator. The Coordinator will assign staff members to escort campers to the muster area.
- c. If evacuation is determined to be the prudent choice, the coordinator will account for all staff, participants, and campers at the muster area using camp rosters with the assistance of staff members. The evacuation protocol in Appendix 1 will be followed.

### **Reporting**

All unintended fires will be reported to the ranger and coordinator as soon as possible.

To eliminate confusion and the possibility of false alarms for fires, only the coordinator and/or Ranger are authorized to contact 911 and notify county Emergency Management personnel regarding fire incidents.

### **Council Headquarters Notification**

The coordinator and or ranger will contact the council office and the scout executive as soon as possible with information on employee injuries and/or loss of life and property damage.

## Appendix 6: Hazardous Materials Exposure

**NOTE:** Depending on the incident, this event may cause the coordinator to:

- Notify the staff advisor / scout executive
- Complete a Scouting America Incident Report

If a hazardous chemical spill is observed:

- a. All people are to leave the area.
- b. Report the spill to the ranger and provide the time of spill, location, what was spilled, and a description of the area.
- c. The ranger will handle the spill as required by the chemical data sheet.
- d. The ranger will report back when the area is all clear.

All chemicals are stored in their original container. If chemicals are required to be placed in a different style container for use, the container must be clearly labeled as to the contents.

**In the event the camp is notified of a release or spill of hazardous material in the area,** the Ranger will work with county emergency management personnel to determine if the camp should shelter in place or evacuate.

## Appendix 7: Medical Emergencies

**NOTE:** Depending on the incident, this event may cause the coordinator to:

- Call 911 and contact county emergency management personnel
- Notify the staff advisor / scout executive
- Complete a Scouting America Incident Report

**NOTE:** Additional and more complete information about medical information can be found in the Capitol Area Council Health Policy and Procedure Manual. If any conflict exists between this policy and the Health Policy and Procedure Manual, Health Policy and Procedure Manual controls.

All council and district events must have a designated camp health officer familiar with the council health policies and procedures (separate document). The camp health officer will evaluate all camp illnesses and injuries for treatment and severity. Treatment will be provided for illnesses and injuries within the scope and capabilities of the medical facilities and standing orders in the council Health Policy and Procedure Manual.

**If a suspected or known communicable disease occurs at a Scouting event,** see the Epidemic Policy (in the appendices) and contact the Coordinator.

**Minor Injuries/Illness:** these can be treated with first aid and seen by appropriate medical personnel, when necessary.

**Major Accident or Health Emergency:** expertise and equipment may not be available at the camp facilities to treat severe injuries and illnesses such as fractures, lacerations requiring stitches, second- or third-degree burns, snake bites, major allergic reactions, and concussions. When these occur, the patient should be taken to the nearest emergency medical facility by ambulance, camp vehicle, or personally owned vehicle. Youth protection requirements are still required when transporting a youth under the age of 18. The coordinator shall notify the parent/guardian, or emergency contact listed on the Scouting America Annual Health and Medical Record as soon as possible.

Automated External Defibrillators (AEDs) are located at Lost Pines Scout Reservation in Medical Lodge in Kindsay Lodge, the Dining Hall, swimming pool.

Automated External Defibrillators (AEDs) are located at Camp Tom Wooten in Hagn Lodge and the pool.

Automated External Defibrillators (AEDs) are located at Camp Green Dickson in the medical lodge.

Automated External Defibrillators (AEDs) are located at Smilin V in the headquarters building.

Depending on the severity, the camp health officer may also contact the parent/guardian listed on Scouting America Annual Health and Medical Record to pick up their child.

Advanced medical care should not be provided by staff or participants. These situations should be left to emergency services professionals or the camp health officer.

All attempts must be made to provide care listed in the Health Policy and Procedure Manual.

## Emergency Action Plan Capitol Area Council Camps

If necessary, call 911 and county emergency management personnel.

**Fatalities:** if a fatality occurs on camp property, the coordinator shall call 911 immediately and direct that their instructions be followed. Unless rescue or first aid was required, do not disturb the victims or the surrounding area unless necessary for safety or to provide aid to others. Keep a responsible adult at the scene to prevent disturbance of the area until the authorities arrive. The coordinator will notify the scout executive as soon as possible. The scout executive shall notify the parent/guardian, or emergency contact listed on the Scouting America Annual Health and Medical Record, as soon as possible.

## Appendix 8: Missing Person Incidents

**NOTE:** Depending on the incident, this event may cause the coordinator to:

- Notify the staff advisor / scout executive
- Complete a Scouting Incident Report

The coordinator will maintain a list of all staff, visitors, and participants at the camp. If a person is believed to be missing, the coordinator will initiate a headcount of the unit (See Stage 1 in Appendix 2: Accountability Plan) and ask for the whereabouts of the lost person.

It is most important to remain calm and not to frighten any campers / participants to allow all to think clearly.

During the event, coordinator maintains a written listing of places checked and the staff member that cleared the area to allow for an efficient and quick response to all areas of camp.

- a. Missing Person
- b. Determine where and when the last time the person was seen.
- c. Assign a staff member to check:
  - I. Normal areas the person would be found (e.g., campsites, tents, bath houses, dining hall, program areas),
  - II. Camp medical area
  - III. Review the camp sign-out log.
- d. Ask Scouts/friends for possible locations. Possible questions include:
  - I. Who saw the Scout last?
  - II. Who is their "buddy"?
  - III. Where – which way – was the Scout going?
  - IV. When did the Scout leave?
  - V. With whom did the Scout leave?
  - VI. What mood was the Scout in? Angry? Homesick? Normal?
  - VII. Was the Scout feeling ill?
  - VIII. Does the Scout have family or a favorite staff member they would contact?
- e. Contact all staff with information on the missing person and include the following:
  - I. Name of the missing person
  - II. Where and when last seen
  - III. Description of the person to include hair, eye color, weight, height, clothing.
- f. If the person isn't found in twenty (20) minutes, they will be presumed lost. The coordinator will proceed to Stage 2 of the Emergency stages listed in Appendix 2 of

**Emergency Action Plan  
Capitol Area Council Camps**

this document and all campers and staff will muster at the designated location where a general call out/canvas for the missing person will be accomplished.

- g. If the missing person is still not located, the coordinator will institute a public search that will include contacting 911, the staff advisor and/or the scout executive, and youth's parent or guardian, or adult's emergency contact. (This level of missing person event will require a Scouting America Incident Report to be completed and turned into the Capitol Area Council.)

## Appendix 9: Aquatic Emergencies

The following protocol will be followed for aquatic emergencies including drowning, missing swimmers, capsized watercraft or the need for aquatic rescue.

### Drownings

See Medical protocol for deceased persons in Appendix 7.

### Missing swimmers

- a. The lifeguard on duty will clear the water of all swimmers and the staff on shore will count and assemble all campers/participants and compare them to the buddy tags.
- b. The lifeguard will conduct a visual scan of the area.
- c. If a person is not located immediately, lifeguard will notify the coordinator and the waterfront director, if not already at the swimming area.
- d. All lifeguards and unattached staff will assemble at the swimming area immediately and begin search efforts.
- e. Staff will be sent to common areas to search for the missing person.
- f. Coordinator will notify the health officer, who will report to the waterfront area with the AED immediately.
- g. If the camper/participant is not located, the coordinator will institute a public search that will include contacting 911, county emergency management personnel, the staff advisor and/or the scout executive, and youth's parent or guardian, or adult's emergency contact.

### Capsized watercraft

- a. Waterfront staff will contact the Camp Coordinator.
- b. If rescue of persons on the craft is an emergency, waterfront staff should call 911 to assist in the rescue giving details of the location and necessity for rescue.
- c. If a rescue of persons on the craft is necessary, other watercraft or waterfront staff members can initiate rescue using the "reach, throw, row, go" protocol.
- d. If necessary for life safety, utilize the protocol for water rescue below.
- e. Other than possible rescue watercraft, waterfront staff will recall all other watercraft to return to shore during any recovery of capsized watercraft.
- f. If practical and rescue of persons is not an issue, other watercraft will assist in either righting the capsized craft or assist in towing it to shore. If not practical, waterfront personnel will tow the craft to shore.
- g. If there is an injury involved, the coordinator will contact, by telephone, 911, the County Emergency Management authorities, the staff advisor and/or the scout executive, and youth's parent or guardian, or adult's emergency contact. The coordinator and/or Scout Executive will make the call to the person's parent, guardian or emergency contact.

**Water rescues**

- a. Waterfront staff are trained (pursuant to Scouting America and American Red Cross guidelines) to recognize whether a swimmer is in trouble.
- b. Waterfront staff will utilize the principle of “reach, throw, row, go” to determine rescue course of action. Poles, ring buoys, rescue ropes and watercraft will be available at all pools and waterfront areas for use in the event needed.
- c. If resuscitation is needed following rescue, 911 should be called immediately and a staff member will be assigned by the Coordinator to meet 911 responders at the front gate to take them to the needed location.
- d. The Coordinator should immediately be notified and be responsible for bringing an AED to the location needed.
- e. Waterfront staff should administer first aid, including CPR, if necessary, while awaiting 911 services.
- f. As soon as practical, the Coordinator will provide notification of the event to the Scout Executive, and the parent, guardian or next of kin of the rescued person.

## Appendix 10: Active Shooter

**NOTE:** This event will cause the coordinator to:

- Notify 911
- Notify the staff advisor / scout executive
- Complete a Scouting America Incident Report

An active shooter is an individual actively engaged in killing or attempting to kill people in a confined and populated area; in most cases, active shooters use firearms(s) and there is no pattern or method to their selection of victims.

Active shooter situations are unpredictable and evolve quickly. Typically, the immediate deployment of law enforcement is required to stop the shooting and mitigate harm to victims.

Because active shooter situations are often over within ten (10) to fifteen (15) minutes, before law enforcement arrives on the scene, individuals must be prepared both mentally and physically to deal with an active shooter situation.

### **Best practices for coping with an active shooter situation:**

- a. Be aware of your environment and any possible dangers.
- b. Take note of the two nearest exits in any facility you visit.
- c. If you are in an office, stay there and secure the door.
- d. If you are in a hallway, go into a room and secure the door.
- e. As a last resort, attempt to take the active shooter down. When the shooter is at close range and you cannot flee, your chance of survival is much greater if you try to incapacitate him or her.
- f. Call 911 when it is safe to do so!

### **How to Respond When an Active Shooter is in Your Vicinity**

Quickly determine the most reasonable way to protect your own life. Remember that campers/participants are likely to follow the lead of staff during an active shooter situation.

- a. **Get out (evacuate).** If there is an accessible escape path, attempt to evacuate the premises. Be sure to do the following:
  - i. Have an escape route and plan in mind.
  - ii. Evacuate regardless of whether others agree to follow.
  - iii. Leave your belongings behind.
  - iv. Help others escape, if possible.
  - v. Prevent individuals from entering an area where the active shooter may be located.
  - vi. Do not attempt to move wounded people.
  - vii. Call 911 when it is safe to do so.

- b. **Hide out.** If evacuation is not possible, find a place to hide where the active shooter is less likely to find you. Your hiding place should:
  - i. Be out of the active shooter's view.
  - ii. Provide protection if shots are fired in your direction (i.e., an office with a closed and locked door).
  - iii. Not trap yourself or restrict your options for movement.
- c. To prevent an active shooter from entering your hiding place:
  - I. Lock the door.
  - II. Block the door with heavy furniture.
- d. If the active shooter is nearby, do the following:
  - I. Lock the door.
  - II. Silence your cell phone and/or pager.
  - III. Turn off any source of noise (i.e., radios, televisions).
  - IV. Hide behind large items (i.e., cabinets, desks).
  - V. Remain quiet.
- e. If evacuation and hiding out are not possible, do the following:
  - I. Remain calm.
  - II. Dial 911, if possible, to alert police of the active shooter's location.
  - III. If you cannot speak, leave the line open and allow the dispatcher to listen.
- f. **Take out (act against the active shooter).** As a last resort, and only when your life is in imminent danger, attempt to disrupt and/or incapacitate the active shooter by:
  - I. Acting as aggressively as possible against him or her
  - II. Throwing items and improvising weapons
  - III. Yelling
  - IV. Committing to your actions

**g. How to Respond When Law Enforcement Arrives**

Law enforcement's purpose is to stop the active shooter as soon as possible. Officers will proceed directly to the area in which the last shots were heard.

- I. Officers usually arrive in teams of four.
- II. Officers may wear regular patrol uniforms or external bulletproof vests, Kevlar helmets, and other tactical equipment.
- III. Officers may be armed with rifles, shotguns, and handguns.
- IV. Officers may use pepper spray or tear gas to control the situation.

- V. Officers may shout commands and may push individuals to the ground for everyone's safety.

**h. How to react when law enforcement arrives:**

- I. Remain calm and follow the officers' instructions.
- II. Put down any items in your hands (i.e., bags, jackets).
- III. Immediately raise hands and spread fingers.
- IV. Keep hands visible at all times.
- V. Avoid making quick movements toward officers,
- VI. Avoid holding grabbing ahold of the officer for safety.
- VII. Avoid pointing, screaming, and/or yelling.
- VIII. Do not stop to ask officers for help or directions when evacuating, just proceed in the direction from which officers are entering the premises.

**i. Information to provide to law enforcement or the 911 operator:**

- I. Location of the active shooter
- II. Number of shooters, if more than one
- III. Physical description of shooter(s)
- IV. Number and type of weapons held by the shooter(s)
- V. Number of potential victims at the location

**NOTE:** The first officers to arrive at the scene will not stop to help injured persons. Expect rescue teams comprised of additional officers and emergency medical personnel to follow the initial officers. These rescue teams will treat and remove any injured persons. They may also call upon able-bodied individuals to assist in removing the wounded from the premises.

Once you have reached a safe location, you will probably be held in that area by law enforcement until the situation is under control and all witnesses have been identified and questioned. Do not leave until law enforcement authorities have instructed you to do so.

## Appendix 11: Severe Weather Incidents

**NOTE:** Depending on the nature of the weather, damage to the facility, and injuries:

- Notify the staff advisor / scout executive
- Decide whether to shelter in place or evacuate
- Follow “shelter in place” or “evacuation” protocols

The Coordinator or their designee will monitor on a 24-hour basis all National Weather Service alerts by weather radio (independent of the internet). Depending on the severity of the weather event (whether it is an advisory, watch or a warning), the Coordinator will issue directives as necessary and reasonable to either shelter in place or evacuate in consultation with local authorities (911) and County Emergency Management.

AC/battery backup weather radios will be maintained by the camp ranger and provided for use at each camp session. The Coordinator or their designee will ensure on a daily basis that the weather radio is powered on, operational and set to receive NWS alerts 24 hours a day.

The Coordinator will make sure the staff is kept apprised of any National Weather Service event (whether it is an advisory, watch or a warning) either at meeting times or as necessary when an event calls for further action on the part of the Coordinator.

Some weather incidents, including severe weather incidents, could necessitate a “shelter in place” determination or “assemble at the muster area” determination.

The coordinator will utilize the camp public address system as well as tasking staff members to physically notify campers of the emergency stage (shelter in place or go to muster area).

If a shelter in place determination is made, the assigned staff members will be given rosters of the campers for whom those staff members are responsible during the “shelter in place” timeframe. If any campers are unaccounted for by the staff member, the names of those persons will be reported back to the Coordinator to assign other staff members to locate.

The staff members will take their assigned campers to the most appropriate shelter in place area and remain with the campers during the pendency of the weather warning or, if called for, accompany the campers to the muster area.

If an evacuation is necessary due to a weather or natural disaster event, the coordinator will follow the evacuation plan outlined in Appendix 1. The coordinator will also notify 911 and local Emergency Management authorities if an evacuation is being considered or other services are needed.

Notification of parents, guardians and contact persons is not necessary for a “shelter in place” situation. In the event of an evacuation, the Coordinator will follow the protocol outlined in the Evacuation Plan in Appendix 1. Notification of parents, guardians or contact persons will be done as soon as practicable pursuant to the protocol in Appendix 1.

### Flash Floods

The dangers of flash flooding can occur suddenly and usually within hours of excessive heavy rainfall. Camping in low areas can be hazardous due to flash flooding therefore observe the following.

## Emergency Action Plan Capitol Area Council Camps

- a. Camp on the highest ground available within the established camping area.
- b. Secure all boats, canoes, and equipment against possible high water.
- c. *At the first sign of rapidly rising water*, move to the highest ground possible; leave all gear and/or equipment as necessary.

### Thunder/Lightning

In the event thunder or lightning is monitored in the areas, care should be taken to prevent injury.

- a. Stay away from natural lightning rods: trees in open areas, high ground, aquatic areas, climbing tower, canoes, and any metal object.
- b. If near a building or vehicle, get inside.
- c. In a wooded area, seek shelter in a growth of trees in a low area and not under the tallest tree in the area.
- d. If in the open seek a low area, such as a ravine or valley.
- e. Groups should spread out.
- f. Never stand under a tree, tall structures, or out in the open during a thunder/lightning storm.

If unable to safely find shelter during a thunder/lightning storm, crouch down in a ball-like position with head tucked and hands over their ears to make minimal contact with the ground.

### High winds

- a. Everyone should move to a shelter or an open area away from trees.
- b. Be aware of dead trees and trees with dead limbs.
- c. Monitor for power lines that may have fallen due to high wind in the area.

### Tornados

Camp leadership should become thoroughly familiar with the terrain adjacent to their campsite as to the best location for everyone when a tornado warning is in effect. Everyone should try and lay down in a depression, ditch, or ravine to be as low as possible.

Knowing the difference between a watch and a warning can be lifesaving.

- a. A *tornado **watch*** means conditions are right for a tornado to form. Keep apprised of weather conditions and be ready to take shelter.
- b. A *tornado **warning*** means that a funnel cloud or tornado has been spotted in the area. Take shelter immediately in case a tornado approaches.

### Hurricane / Tropical Storm

In the event of a Hurricane being reported within 200 miles and heading in the general direction of the camp, all council camps will be closed, and everyone will be requested to return home.

**Earthquakes**

While uncommon, the potential for an earthquake exists in Central Texas. Everyone should act immediately to lay flat on open ground with no structures nearby and away from as many trees as possible. All aquatic activities will stop, and the water will be cleared. A swimmer count will be taken.

## Appendix 12: Shooting Sports Incident

**NOTE:** ANY shooting-related injury will require:

- Notify 911
- Notify the staff advisor/scout executive
- Complete a Scouting America Incident Report

**If an any shooting-related injury occurs,** the Shooting Sports Rangemaster will immediately:

- Call a cease fire, order all guns and bows cleared, instruct all shooters to step away from the firing line until the situation has been handled.
- Ensure the safety of all on the range, by assigning a designee to confirm all guns are safe.
- Notify the coordinator with the following information:
  - Name and age of the injured
  - Nature of the injury
  - Severity of the injury
  - If 911 has already been notified
- Contact the camp health officer for treatment.
- The Coordinator will notify the parent, guardian or contact person for the injured person.

**In the event the injury requires additional medical treatment,** 911 will be contacted or (depending upon the severity of the injury), the parents/guardians may transport the participant to the local treatment facility. Other participants will be cleared from the area until the injured are removed.

**If a serious injury occurs,** 911 will be contacted immediately along with the ranger. Other participants will be removed from the area; only those assisting with the injured will remain. The Coordinator will notify the parent, guardian or contact person for the injured person and advise of the injury and facility to which the person was transported.

## **Appendix 13: Capitol Area Council Communication Plans**

Communications with the authorities on site must be left to the coordinator or his designee. Communications with the press must be left to the scout executive or his designee.

This plan includes individual evacuation protocols for every Capitol Area Council camp. The individual pages are available for printing and posting in appropriate areas where people are gathered or where potential issues may arise.

## Lost Pines Scout Reservation Phone List

**Camp Street Address:** 785 FM 1441 Bastrop, Texas 78602

**Scouts First Helpline:** (844) 726-8871

**Fire, Police, Medical and Health Services - Call 911 \*Notify the ranger to direct services**

Acadian Ambulance Service 927 Main Street Bastrop, TX 78602 (512) 303-0558	Ascension Seton Bastrop Hospital 630 Hwy 71 Bastrop, TX 78602 (737) 881-7400
	St. David's Emergency Center - Bastrop 3201 Hwy 71 Bastrop, TX 78602 (512) 308-5900
Department of State Health Services	(512) 776-7111
Bastrop County Health Services	(512) 321-3982
Bastrop County Emergency Management	911 or (512) 581-4022

**Police/Sheriff's Department – Call 911 \*Notify the Ranger to direct services**

Bastrop Police Department 104 Grand Avenue Bastrop, TX 78602 (512) 332-8600	Bastrop County Sheriff's Office 200 Jackson Street Bastrop, TX 78602 (512) 303-1080
--	--

**Fire Department – Call 911 \*Notify the Ranger to direct services**

Bastrop County ESD 2, Fire Station 3 926 FM 1441 Bastrop, TX 78602
--

### Council Contact Information

Chief Executive	Jon Yates	(512) 496-3289
Director of Support Services	Ron Settele	(972) 822-0984
Ranger	Charles Frentz	(806) 928-8920
Council Health Supervisor	Dr. Zachary Crislip	(713) 878-0813
Council Health Coordinator	Staci Kilpatrick	(512) 657-5789

### Suggested Camp Muster Areas:

Primary Muster Area: Parade Ground

Secondary Muster Area: Front Gate by ranger Office

## **Camp Tom Wooten Phone List**

**Camp Street Address:** 785 FM 1441 Bastrop, Texas 78602

**Scouts First Helpline:** (844) 726-8871

**Fire, Police, or Medical Services - Call 911 \*Notify the ranger to direct services**

Acadian Ambulance Service 927 Main Street Bastrop, TX 78602 (512) 303-0558	Ascension Seton Bastrop Hospital 630 Hwy 71 Bastrop, TX 78602 (737) 881-7400  St. David's Emergency Center - Bastrop 3201 Hwy 71 Bastrop, TX 78602 (512) 308-5900
Department of State Health Services	(512) 776-7111
Bastrop County Health Services	(512) 321-3982
Bastrop County Emergency Management	911 or (512) 581-4022

**Police/Sheriff's Department – Call 911 \*Notify the Ranger to direct services**

Bastrop Police Department 104 Grand Avenue Bastrop, TX 78602 (512) 332-8600	Bastrop County Sheriff's Office 200 Jackson Street Bastrop, TX 78602 (512) 303-1080
--	--

**Fire Department – Call 911 \*Notify the Ranger to direct services**

Bastrop County ESD 2, Fire Station 3 926 FM 1441 Bastrop, TX 78602
--

### **Council Contact Information**

Chief Executive	Jon Yates	(512) 496-3289
Director of Support Services	Ron Settele	(972) 822-0984
Lead Ranger	PJ Brown	(979) 417-6564
Council Health Supervisor	Dr. Zachary Crislip	(713) 878-0813
Council Health Coordinator	Staci Kilpatrick	(512) 657-5789

### **Suggested Camp Muster Areas:**

Primary Muster Area: Parade Ground

Secondary Muster Area: Front Gate by ranger Office

## Smilin V Scout Ranch Phone List

**Camp Street Address:** 250 CR 286 Spur, Liberty Hill, Texas 78642

**Scouts First Helpline:** (844) 726-8871

**Fire, Police, or Medical Services - Call 911 \*Notify the ranger to direct services**

Access Health Urgent Care 13140 W State Hwy 29 Liberty Hill, TX 78642 (512) 615-9868	Baylor Scott & White Emergency Medical Center – Cedar Park 900 E Whitestone Blvd Cedar Park, TX 78613 (737) 757-3600
---	--

**Police/Sheriff's Department – Call 911 \*Notify the Ranger to direct services**

Liberty Hill Police Department 1120 Loop 332 Liberty Hill, TX 78642 (512) 515-5409	Williamson County Sheriff's Office 508 S Rock Street Georgetown, TX 78626 (512) 864-8282
---	---

**Fire Department – Call 911 \*Notify the Ranger to direct services**

Williamson County Emergency Service District No. 4 301 Loop 332 Liberty Hill, TX 78642 (512) 512-5165
--

### Council Contact Information

Chief Executive	Jon Yates	(512) 496-3289
Director of Support Services	Ron Settele	(972) 822-0984
Lead Ranger	PJ Brown	(979) 417-6564
Council Health Supervisor	Dr. Zachary Crislip	(713) 878-0813
Council Health Coordinator	Staci Kilpatrick	(512) 657-5789

### Suggested Camp Muster Areas:

Primary Muster Area: Parade Ground

Secondary Muster Area: Front Gate

## Camp Green Dickson Phone List

**Camp Street Address:** County Rd 354, Shiner, TX 77984

**Scouts First Helpline:** (844) 726-8871

**Fire, Police, or Medical Services - Call 911 \*Ensure someone is at the gate to lead in emergency services**

Gonzales County EMS 1700 Water St. Gonzales, TX 78629 (830) 672-4949	Gonzales Memorial Hospital 1110 N Sarah Dewitt Dr. Gonzales, TX 78629 (830) 672-7581
---	---

**Police/Sheriff's Department – Call 911 \*Ensure someone is at the gate to lead in emergency services**

Gonzales Police Department 716 St Paul St Gonzales, TX 78629 (830) 672-8686	Gonzales County Sheriff's Office 1713 E Sarah DeWitt Dr Gonzales, TX 78629 (830) 672-6524
--	--

**Fire Department – Call 911 \*Ensure someone is at the gate to lead in emergency services**

Shiner Volunteer Fire Department 519 N Avenue D Shiner, TX 77984 (361) 594-3333
--

### Council Contact Information

Chief Executive	Jon Yates	(512) 496-3289
Director of Support Services	Ron Settele	(972) 822-0984
Lead Ranger	PJ Brown	(979) 417-6564
Council Health Supervisor	Dr. Zachary Crislip	(713) 878-0813
Council Health Ccoordinator	Staci Kilpatrick	(512) 657-5789

### Suggested Camp Muster Areas:

Primary Muster Area: Parade Ground

Secondary Muster Area: Front Gate

## Griffith League Scout Ranch Phone List

**Camp Street Address:** 424 Oak Hill Cemetery Rd, Bastrop, TX 78602

**Scouts First Helpline:** (844) 726-8871

**Fire, Police, or Medical Services - Call 911**

Acadian Ambulance Service 927 Main Street Bastrop, TX 78602 (512) 303-0558	Ascension Seton Bastrop Hospital 630 Hwy 71 Bastrop, TX 78602 (737) 881-7400  St. David's Emergency Center - Bastrop 3201 Hwy 71 Bastrop, TX 78602 (512) 308-5900
Department of State Health Services	(512) 776-7111
Bastrop County Health Services	(512) 321-3982
Bastrop County Emergency Management	911 or (512) 581-4022

**Police/Sheriff's Department**

Bastrop Police Department 104 Grand Avenue Bastrop, TX 78602 (512) 332-8600	Bastrop County Sheriff's Office 200 Jackson Street Bastrop, TX 78602 (512) 303-1080
--	--

**Fire Department – Call 911**

Bastrop County ESD 2, Fire Station 4 1432 N. State Highway 95 Bastrop, Texas
--

**Council Contact Information**

Chief Executive	Jon Yates	(512) 496-3289
Director of Support Services	Ron Settele	(972) 822-0984
Lead Ranger	PJ Brown	(979) 417-6564
Council Health Supervisor	Dr. Zachary Crislip	(713) 878-0813
Council Health coordinator	Staci Kilpatrick	(512) 657-5789

**Suggested Camp Muster Areas:**

Primary Muster Area: Climbing Pavilion

Secondary Muster Area: Front Gate

## **Camp Alma McHenry Phone List**

**Camp Street Address:** County Road 121, Giddings, Texas 78942

**Scouts First Helpline:** 844-726-8871

**Fire, Police, or Medical Services - Call 911 \*Ensure someone is at the gate to lead in emergency services**

B & M Ambulance Inc 330 E Austin St Giddings, TX 78942 (979) 542-2777	Ascension Seton Smithville Hospital 1201 Hill Rd Smithville, TX 78957 (979) 542-9519
--	---

**Police/Sheriff's Department – Call 911 \*Ensure someone is at the gate to lead in emergency services**

Giddings Police Department 179 E Industry St Giddings, TX 78942 (979) 540-2700	Lee County Sheriff's Office 2122 FM448 Giddings, TX 78942 (979) 542-2800
---	---

**Fire Department – Call 911 \*Ensure someone is at the gate to lead in emergency services**

Giddings Fire Department 151 W Independence St Giddings, TX 78942 (979) 542-3131
---

### **Council Contact Information**

Chief Executive	Jon Yates	(512) 496-3289
Director of Support Services	Ron Settele	(972) 822-0984
Lead Ranger	PJ Brown	(979) 417-6564
Council Health Supervisor	Dr. Zachary Crislip	(713) 878-0813
Council Health coordinator	Staci Kilpatrick	(512) 657-5789

### **Suggested Camp Muster Areas:**

Primary Muster Area: Open area by old ranch house

Secondary Muster Area: Front Gate

## Roy D. Rivers Wilderness Camp Phone List

**Camp Street Address:** FM 535 turn on CR 305, Rosanky, TX 78953

**Scouts First Helpline:** 844-726-8871

**Fire, Police, or Medical Services - Call 911 \*Ensure someone is at the gate to lead in emergency services**

Acadian Ambulance Service 1401 N W Loop 230 Smithville, TX 78957 (512) 237-1271	Ascension Seton Smithville Hospital 1201 Hill Rd Smithville, TX 78957 (512) 237-3214
--	---

**Police/Sheriff's Department – Call 911 \*Ensure someone is at the gate to lead in emergency services**

Smithville Police Department 105 NW 4th St Smithville, TX 78957 (512) 237-3228	Bastrop County Sheriff's Office 105 NW 4th St Smithville, TX 78957 (512) 237-2543
---	--

**Fire Department – Call 911 \*Ensure someone is at the gate to lead in emergency services**

Bastrop County ESD No. 1 Station 3 142 High St Smithville, TX 78957
---

### Council Contact Information

Chief Executive	Jon Yates	(512) 496-3289
Director of Support Services	Ron Settele	(972) 822-0984
Lead Ranger	PJ Brown	(979) 417-6564
Council Health Supervisor	Dr. Zachary Crislip	(713) 878-0813
Council Health coordinator	Staci Kilpatrick	(512) 657-5789

### Suggested Camp Muster Areas:

Primary Muster Area: Open area by water

Secondary Muster Area: Front Gate

## **Appendix 14: Transportation Emergencies**

Communications with the authorities on site must be left to the coordinator or his designee. Communications with the press must be left to the scout executive or his designee.

- **Notify 911**
- **Notify the county Emergency Management office**
- **Notify the staff advisor / scout executive**
- **Notify the youth's parent or guardian or an adult's emergency contact**
- **Complete a Scouting America Incident Report**

Transportation emergencies can include Scout personnel on or off Scout property in vehicles owned or used by licensed drivers in the conduct of Scouting business.

### **Response to a Traffic Incident:**

- **STOP:** Stop-Think-Observe-Plan to prevent further injury or danger. If the event is on camp, the coordinator or his designee will utilize staff to assist in this effort.
- **Protect:** Immediately ensure the safety of your passengers by moving them further away from the danger, if necessary. If the event is on camp, the coordinator or his designee will utilize staff to accomplish these measures.
- **Emergency Services:** Call 911 immediately in case of an accident or personal injury contact county Emergency Management. If the event is on camp, the coordinator or his designee will make these calls.
- **First Aid:** Administer immediate first aid if trained and necessary. If the event is on camp, the coordinator or his designee will utilize staff and health personnel to assist in rendering first aid
- **Communicate:** Contact the Coordinator or his designee and/or the scout executive as soon as possible.
- The Coordinator will contact the parent or guardian of any youth member involved in the accident and advise them of any injuries and medical treatment.

Potential Transportation emergencies may include using a bus provided by Bastrop Independent School District for transporting campers during an evacuation. This process is contained in the Evacuation Plan for Lost Pines Scout Reservation, Appendix 1.

## Appendix 15: Epidemic Plan

Additional and more complete information about medical policy can be found in the Capitol Area Council Health Policy and Procedure Manual. If any conflict exists between this policy and the Council Health Policy, the Capitol Area Council Health Policy and Procedure Manual controls.

Depending on the nature and severity of the epidemic event the coordinator may:

- Notify the staff advisor / scout executive
- Notify county emergency medical service personnel
- Complete a Scouting America Incident Report

### Objective:

To establish a comprehensive response plan for containing potentially serious epidemics, ensuring the safety of staff, patients, and the community.

### Staff Use of Protective Equipment:

All medical staff are to wear appropriate PPE, including masks, gloves, gowns, and eye protection when handling suspected cases.

### Isolation Process:

- a. A specific isolation area will be designated at the camp for suspected or confirmed cases. In the case of our only licensed camp, Lost Pines Scout Reservation, the isolation area will be the Medical facility at Lindsay Lodge.
- b. Clear signage will indicate isolation areas and restrict access to authorized personnel only.

### Notifications:

- a. Campers and staff must report any suspected serious contagious diseases to the camp medical officer within 24 hours of identification. The Coordinator will utilize a standardized Scouting America injury incident report form for consistency and clarity.
- b. The Coordinator will contact county Emergency Management, the local health department and the Texas Department of State Health Services and, if necessary, develop a plan that includes representatives from Scouting America staff, Emergency Management, and public health to coordinate community-level responses.
- c. The Coordinator will promptly notify the parents or guardians of youth, or emergency contacts for adults, of isolated patients. Notification will include the nature of the disease, isolation procedures, and potential exposure risks. Updates will be provided by the Coordinator every 8 hours or as often as the parent or guardian requests.