

STEMBOREE

Guidebook for Participants

**March 29-30, 2025
Smilin V Scout Ranch
Capitol Area Council**



Cub Scout activities, adventures, and awards
with an emphasis on exploring
Science, Technology, Engineering & Math

All-day event Saturday with optional camping
overnight to Sunday.

Version 1.1 (2/10/2025)

Version History

Version 1 – February 3, 2025

- Original document

Version 1.1 – February 10, 2025

- (pages 8 & 21) COSMIC update: Every class will start with the COSMIC First-step Patch, followed by a COSMIC patch topic emphasis: Computer Hardware, Eclipses, or Biochemistry.
- Added event patch design to cover page.

WELCOME TO STEMBOREE 2025!

About

The purpose of this weekend is to provide Cub Scouts and their families, dens, and packs opportunities to explore scouting and have fun in a STEM-focused camp environment. Camping overnight is optional.

STEMboree includes age-appropriate activities for all Cub levels: Lions, Tigers, Wolves, Bears, and Webelos. (Arrow of Light scouts should have recently crossed to a troop and should explore Scouts BSA STEM opportunities).

During STEMboree we will:

- Deliver a fun outdoor experience for the whole family.
- Foster enthusiasm in STEM in Scouting.
- Promote and follow Scouting methods, skills, procedures, and values.
- Provide scouting families an opportunity to meet and engage with other scouting families.

STEMboree is hosted by the volunteer STEM Committee of the Capitol Area Council and many other Scouting volunteers just like you.

STEMboree is for Cub Scouts and their families.

All program material is geared towards Cubs. Older scouts may attend STEMboree by volunteering to help as staff. Older youth who are looking to enjoy more STEM opportunities, should check out STEM Adventure Weekend, September 19-21, 2025 at Lost Pines. <https://scoutingevent.com/564-94449>

“STEM is part of an initiative the Boy Scouts of America has taken on to encourage the natural curiosity of youth members and their sense of wonder about these fields through existing programs.”

<http://www.scouting.org/stem/AboutSTEM.aspx>

CAC Staff Contact: Jessica Snider, Assistant Director of Support Services
Office: (512) 617-8651, Cell: (512) 632-9395, jessica.snider@scouting.org

Volunteer Contact: Dr. Tim Urban, CAC VP of STEM
(512) 627-0472, drtimurban@gmail.com

Capitol Area Council STEM Webpages

<https://www.capitolareascouting.org/activities/stem/>

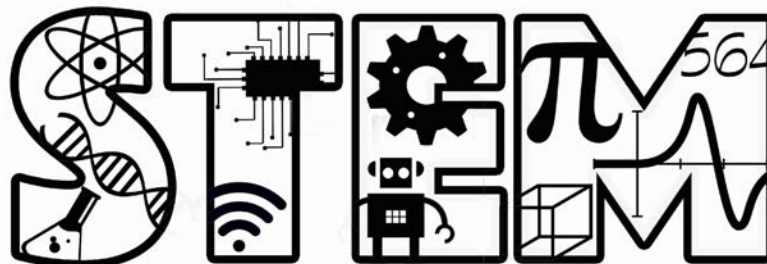
<https://www.capitolareascouting.org/activities/stem/stemboree/>

<https://www.capitolareascouting.org/activities/stem/stem-adventure-weekend/>

Table of Contents

Overview of STEMboree	6
Weekend Schedule	7
Class Schedule	8
Class Descriptions	9
Cub Adventures	9
Range & Target Sports	9
COSMIC Award classes	9
STEM Midway Activities (during class times and at designated free times)	9
Group Instruction – Being Respectful and Engaged	10
Registration	11
Youth Protection / Safeguarding Youth	12
Adult Participation	12
Location: Smilin V	12
Arrival	13
Check-in	13
Little STEM Library	13
Medical reminders	14
Around Camp	15
Restrooms	15
Trash	15
Food	15
Gear	15
Utilities	16
Personal Electronics Policy	16
Departure	17
Electronic Completion Reports	17
Camp Rules & Notes	18
Safe Scouting	18
Vehicles	18
Conduct Policy	18
Outdoor Code	18
Visitors	19
Arrivals and Departures	19

Uniform	19
Appropriate Clothing and Footwear	19
STEM Gear	19
Lost and Found	19
Camp Staff Areas	19
Health and Safety	20
Medications	20
Not Allowed	20
What is COSMIC and What Happened to Nova/Supernova?	21
Contact Capitol Area Council (CAC)	22
STEMboree - Primary Staff Contact	22
STEMboree - Primary Volunteer Contact	22
Appendix A – Map of Smilin V Scout Ranch	23
Appendix B – Directions to Smilin V Scout Ranch	24



Overview of STEMBoree

- Smilin V Scout Ranch, Liberty Hill. See the [council](#) webpage and also Appendix A for a map of Smilin V and Appendix B for directions to Smilin V.
- Activities all day Saturday
- Check-in Saturday begins at 8:30 AM
- Class rotations begin at 10:00 AM
- Saturday evening activities include a campfire, night hike, and star party
- Overnight camping to Sunday is optional

- Cubs may attend STEMBoree with their families or dens or packs.
- Each youth must have a designated responsible adult on site.
- Lions, Tigers, and any non-Scouting-registered siblings must have a Parent/Guardian with them at all times.
- Cub families are responsible for their own food (Saturday lunch) and if staying for evening activities (Saturday dinner) and if camping overnight (Sunday breakfast).

- Registration link: <https://scoutingevent.com/564-81011>
- Registration fees: Cubs signing up for any of the classes are \$25. Adults and siblings are \$10.
- Cubs may sign up for up to 5 class periods and will also have access to the open STEM Midway activities throughout the day.
- Cubs sign up for activities Adventure, Range & Target Sports, COSMIC STEM Awards, and Midway Activities. You will choose these classes on the online registration form. After registering, you may change classes online or at check-in on Saturday as long as the class has space.

- Checklist of things to bring:
 - Medical form A&B for every participant
 - Refillable water bottle for every participant.
 - Food: lunch, optional snacks & dinner & breakfast
 - Camp chair
 - Book(s) to exchange with the Little STEM Library

Note

- Check-in and check-out are at the Large Pavilion.
- If you leave camp for any reason, even if you will be returning, you must check out with staff at the Large Pavillion. We must know who is onsite at all times.
- No vehicles are allowed into camp. Bring a wagon or backpack to transport your gear from the parking lot.
- Potable water and restroom facilities are available.
- There is no dumpster at Smilin V. Please plan to pack out all your trash.
- If you need electricity overnight for health reasons (CPAP), please contact a CAC Staff member as soon as possible to make arrangements.

Weekend Schedule

Saturday, March 29		
8:30 AM	Check-in begins	Large Pavilion
8:30 - 9:50 AM	Open STEM Midway activities	Large Pavilion
10:00 - 10:50 AM	Class Session 1	Around camp
11:00 - 11:50 AM	Class Session 2	Around camp
12:00 - 1:50 PM	Lunch on your own	Campsite
1:00 - 1:50 PM	Open STEM Midway activities	Large Pavilion
2:00 - 2:50 PM	Class Session 3	Around camp
3:00 - 3:50 PM	Class Session 4	Around camp
4:00 - 4:50 PM	Class Session 5	Around camp
5:00 - 5:50 PM	Open STEM Midway activities	Large Pavillion
6:00 - 7:30 PM	Dinner on your own	Campsite
7:30 PM	Campfire and Night Hike	Campfire ring
8:00 - 9:30 PM	Star Party	Telescope area
10:00 PM	Lights Out, Quiet Time to 6:30 AM	-
Sunday, March 30		
6:30 - 8:00 AM	Breakfast on your own, Pack up	Campsite
8:00 AM	Morning Announcements	Large Pavillion
8:00 AM - 10:00 AM	Clean camp, Check out, and Depart	-

The STEMboree schedule may change due to weather, construction, or other camp considerations. Updates will be provided at the event.

Celestial Events for Saturday, March 29, 2025:

Sunrise 7:13 AM, Sunset 5:54 PM (Twilight 6:48 AM to 6:20 PM)

Moonrise 7:26 AM, Moonset 8:24 PM (New Moon)

Partial Solar Eclipse in far northeastern North America (ends at 7:03 AM)

See Venus, Mars, and Jupiter, and many other objects at the Star Party.

Class Schedule

	Class 1	Class 2	Class 3	Class 4	Class 5
CUB ADVENTURES					
Lion		Gizmos and Gadgets	Count On Me	Everyday Tech	Gizmos and Gadgets
Tiger		Designed By Tiger	Floats and Boats	Designed By Tiger	Floats and Boats
Wolf	Air of the Wolf		Digging In the Past	Air of the Wolf	Digging In the Past
Bear	Super Science	Forensics		Super Science	Forensics
Webelos	Earth Rocks	Modular Design	Earth Rocks		Modular Design
RANGE & TARGET SPORTS					
Select Time by Rank	Lion Archery	Tiger Archery	Wolf Archery	Bear Archery	Webelos Archery
	Tiger BB	Wolf BB	Bear BB	Webelos BB	Open range BB
All Ranks	COSMIC Award Class: Each class will cover the COSMIC First-step Patch and on the COSMIC patch topics below:				
	Computer Hardware	Biochemistry	Computer Hardware	Eclipses	Biochemistry
All Ranks	STEM Midway Activities: For any class period, scouts may choose the STEM activities at the large pavilion including the Lego derby, rain gutter regatta, rockets, flight simulator, and more!				

Registered Cubs (\$25) may select up to 5 class periods appropriate for their age group. Adventures and Range & Target classes are rank specific. COSMIC Awards are available to all ranks. The STEM Midway Activities may be chosen for one or more class hours and involve lots of free-play learning. The Midway will also be open during check-in, after lunch, and before dinner (see Weekend Schedule).

Class examples:

A Webelos scout wants to try everything and chooses 1) Earth Rocks, 2) Modular Design, 3) COSMIC, 4) BB, and 5) Archery. She also enjoys the STEM Midway during the three open times.

A Wolf scout is arriving late, so chooses 2) BB, 3) Digging in the Past, 4) Air of the Wolf, 5) COSMIC.

A Lion can't get enough of the Lego Derby track and chooses: 1) STEM Midway, 2) Gizmos and Gadgets, 3) Count on Me, 4) Everyday Tech, 5) STEM Midway.

Class Descriptions

Cub Adventures

- Lion:
 - Gizmos and Gadgets – Build a useful object together and explore the properties of motion and force.
 - Count On Me – Discover basic geometric shapes and their use in arts and crafts.
 - Everyday Tech – Explore how technology has made life easier and the ways to use technology safely.
- Tiger:
 - Designed By Tiger – Discover the fundamentals of the engineering process of designing, building, and improving.
 - Floats and Boats – Discover what floats and how to make a model boat.
- Wolf:
 - Air of the Wolf - Have fun making different types of airplanes and other flying objects.
 - Digging in the Past – Learn about dinosaurs.
- Bear:
 - Super Science – Learn about static electricity, buoyancy and more.
 - Forensics – Learn how crimes are solved with fingerprints and chromatography.
- Webelos:
 - Earth Rocks – Dig into the world of rocks and minerals and discover some surprises about the science of geology
 - Modular Design – Learn about modular design, build using modular-based materials, and practice making directions for others to follow.

Range & Target Sports

- Archery and BB: Cubs can work on earning their rank belt loop.

COSMIC Award classes

- Scouts may earn the COSMIC First-step Patch plus work towards awards for computer hardware, eclipses, and biochemistry!

STEM Midway Activities (during class times and at designated open times)

Let your scout run around to enjoy the various STEM stations set up at Smilin V. Activities include (subject to change): Lego derby, rain gutter regatta, rockets,

experiments, games, animals, astronomy (including some Adventure some requirements), and the Little STEM Library and book exchange.

Group Instruction – Being Respectful and Engaged

Setting Expectations in Advance:

Some classes are rank-specific, but there is no rank or age limit to attend the weekend event; however, it is imperative that all attendees be attentive and engaged in the interactive environment that is created by the instructors, and to not disturb others in the class.

A purpose of STEMboree is for the Cubs to have fun learning STEM. Our STEM instructors will “Do Their Best” to make sure all Cubs are engaged and have the opportunity to complete the requirements.

Cubs have the *opportunity* to complete most class requirements at STEMboree. However, not all awards may be completed at camp, either by limitations of the camp environment or by the Cub’s ability or willingness to do or show or demonstrate or complete or participate in the activity.

From the BSA:

- *“Simply...listening during a group instruction session does not constitute completing a requirement.”*
- *“It is unacceptable to award badges on the basis of sitting in classrooms watching demonstrations, or remaining silent during discussions.”*
- *“[Signing off requirements] in such a manner takes away from the Scout’s opportunity for learning and personal growth...”*

Our instructors will strive to make STEMboree fun and engaging. We ask that all adults attending STEMboree help the Cubs to understand and remain engaged.

Thank you for your help and cooperation!

Registration

Registration:

- Link: <https://scoutingevent.com/564-81011>
- Fees for 2025 are \$25/Cub and \$10/adult or sibling.
- Sign up individually (family) or as a den or as a pack.
- Registration includes entrance to Smilin V, campsites and facilities, classes, materials and activities, and a commemorative STEMboree patch.

Cubs and dens/packs from other councils are very welcome to participate in the Capitol Area Council STEMboree! Please reach out to our staff if you have any questions about our council and our events.

Because this is a Council event, packs do not need a Baloo-trained leader.

For groups of Cubs (two or more non-sibling scouts), two-deep leadership is required, and a female adult is required for any units bringing female youth.

Classes without a minimum number of scouts signed up one week before STEMboree may be canceled and youth will be offered an alternate class. Participants will be notified as soon as possible of any class changes. In the case that a class is canceled due to unforeseen circumstances, Cubs will be moved into alternate instruction areas as available.

Class Changes: There is an opportunity during check-in on Saturday to make changes in Cubs' schedules if the class is available.

For the Council's refund policy please visit <https://www.bsacac.org/refund-policy/>.

Youth Protection / Safeguarding Youth

All adults must have unexpired Youth Protection (Safeguarding Youth) Training.

If you have female youth attending, per Scouting America youth protection (safeguarding youth) policy, there must be a registered female adult leader 21 years of age or over in every unit (pack) serving females.

Adult Participation

This camp relies 100% upon volunteers and so we ask that all adults help by monitoring camp and scouts. If you see something that needs help or attention, please let us know.

Adults with a talent or interest in helping with a specific class or area are asked to please volunteer with the Primary Event Contacts as soon as possible so that we can assign class instructors and assistants.

Adults are reminded to follow youth protection (safeguarding youth) training guidelines at all times. Two-deep leadership is a fundamental tenet of the policies of Scouting America.

Location: Smilin V

STEMboree is held at the Smilin V Scout Ranch, 250 County Rd 286 Spur, Liberty Hill, TX 78642. Smilin V is comprised of 91 acres of improved Hill Country ranch land.

Campsites that will be available for STEMboree are determined that weekend by the ranger and staff and may depend upon weather, logistics, camp repairs, and other factors. Locations are first come, first served.

Large dens or packs (having 8 or more tents) are asked to please notify STEMboree staff ASAP so that an area may be reserved for your group.

For directions, a camp map, and additional information about Smilin V, please visit <https://www.bsacac.org/activities/camping/smilin-v/>. See also Appendix A for a map of camp and Appendix B for driving directions to camp.

Arrival

Upon arrival at Smilin V, you will be directed to park in the main parking lot. The speed limit is 10 MPH everywhere inside Smilin V.

After parking, participants should gather their paperwork and walk to check-in. Follow the signs to the Large Pavillion.

If you are camping overnight, you do not need to bring your gear at this time. There will be time for you to set up later.

Check-in begins Saturday at 8:30 AM at the Large Pavillion. Late check-in and check-out are at the same location.

Check-in

- Please verify your (family/den/pack) head count upon arrival. Is anybody registered but cannot attend? Please let us know so that we can open up classes for others.
- Turn in a copy of parts A & B of the Annual Health and Medical Release (AHMR) form for everyone for review by the health officer.
- Everyone gets a wristband to wear that shows that you belong at camp.
- Scouts get a nametag and class schedule.
- Activities begin as soon as you arrive, and the first class begins at 10:00 AM.
- If you are camping, at any time you may carry your gear from the parking lot to your campsite and set up camp. Many Cubs find a wagon useful.

There will be a map of Smilin V at check-in with the locations of all the events marked.

We need an accurate head count at all times for emergencies:

- All persons entering camp must check in with Staff at the Large Pavillion and must be registered to attend.
- Likewise, every participant leaving camp for any reason must log their departure with Staff.

Little STEM Library

Bring a gently used STEM book and take another book home with you! Borrow as many as you wish to read during camp. Examples include books about volcanoes, sharks, bugs, trucks, castles, animals, and cool science experiments.

Medical reminders

Please bring a COPY of your AHMR medical forms. Do NOT bring your original. Medical forms not picked up at the conclusion of the weekend will be destroyed.

All injuries should be referred to camp medical staff. Current medical forms (Parts A&B) are required for all attendees.

http://www.scouting.org/filestore/HealthSafety/pdf/680-001_AB.pdf

Around Camp

Restrooms

The bathhouse at Smilin V has 6 single-stall restrooms with shower facilities. Follow attire, footwear, and Safeguarding Youth training policies at all times. Only wear shower shoes in the shower – always wear closed-toed shoes to and from the facilities.

Trash

There is no dumpster at Smilin V. Please pack out your trash.

Please help keep Smilin V clean and pick up trash anywhere you see it.

Food

Cub families are responsible for their own food (Saturday lunch and any snacks) and if staying for evening activities (Saturday dinner) and if camping overnight (Sunday breakfast).

There is no dumpster at Smilin V. We ask that you pack out as much of your trash as you can.

Do not leave food unattended: Smilin V has many stinging, biting, and clever critters that adore smellables – please keep food contained.

If you need to leave camp to get food - or for any reason - you must check out at the Large Pavillion and check-in again when you return.

Propane grills are the best option for cooking. Ground fires are not permitted in campsites. Participants will be notified if there is a burn ban, in which case charcoal fires will be prohibited. If you have any questions about bringing any items, please contact staff beforehand. Thank you for your cooperation.

Gear

Dress for the weather. Bring a water bottle. Bring a camp chair.

Bring non-aerosol bug repellent and sunscreen. Aerosols harm the environment, deteriorate tent waterproofing, and are fire hazards. Look for sunscreen without chemicals that harm animal life: <https://oceanservice.noaa.gov/news/sunscreen-corals.html>

There is no camp store. Convenience stores in Liberty Hill are about 5 miles away. If you need to leave camp to get supplies - or for any reason - you must check out

at the Large Pavillion and check-in again when you return. A Scout is helpful and thrifty: most items you can share, make out of duct tape, or live without.

Utilities

Smilin V has potable water. Campsites have no electricity. Camp staff has access to electricity for emergencies. For any health issues needing electricity (CPAP), please contact Staff as soon as possible.

Personal Electronics Policy

Cell coverage is very limited. Enjoy the outdoors and put your phone away!

Some classes may use electronics as tools for their STEM classes. Scouts are asked not to use devices during class unless instructed.

We ask that all Scouts and Scouters refrain from using devices for any non-Scouting related activities. Playing video games, watching YouTube, TV, or listening to the radio disturb others and are not appropriate at camp (unless directed technology use for a STEM class). There are plenty of activities at STEMBoree and acres of land at Smilin V to explore to engage youth and adults.

Departure

Check out at the Large Pavillion.

You may depart camp at any time on Saturday or Sunday after checking out with Staff. Please make sure your campsite is clean.

You will get your STEMboree patches and may pick up medical forms when you check out. Any medical forms left at camp will be shredded for privacy protection.

Drive safely and be careful going home!

Electronic Completion Reports

Congratulations Cubs! Here is your award...

There are no paper reports. Instead, each scout will receive an Electronic Completion Report accessible through the *Black Pug* registration system that lists the Cub requirements that they completed.

This report is a record of a Scout's progress in the pursuit of completing Adventures and other awards. The instructor will call roll at the beginning of each class. After the class, the instructor will turn in the class list and requirements actually and personally completed by each scout. See also Group Instruction Expectations.

The electronic completion report should be turned in to your Den Leader, Cubmaster, or Advancement Chair of your pack for proper verification and recording of your achievements during STEMboree.

Camp Rules & Notes

Safe Scouting

All Scouts must be at camp with a parent, guardian, or adult who is responsible for them.

All Scouting America regulations that apply to your unit's regular campouts apply to STEMboree as well (annual health A & B forms, youth protection (safeguarding youth) training for adults, etc.).

<http://www.scouting.org/Training/YouthProtection.aspx>

Follow the Guide to Safe Scouting: <https://www.scouting.org/health-and-safety/gss>

Vehicles

Park in the main parking lot north of the entrance. *No vehicles are allowed beyond this point or in the campsites.* If you require special assistance, please contact Staff in advance. The walk from the parking lot is not far. Bring a wagon if you wish. These rules are in place for Scout safety. Speed Limit is 10 MPH everywhere in camp.

Conduct Policy

The conduct and discipline of the youth in your pack are your responsibility. Please be vigilant in making sure your scouts' behavior is consistent with the Scout Oath and Law. This is a camp policy that we have found to be of mutual benefit.

Your campsite is your home. Entering or loitering around another campsite without that group's permission invites problems.

Lights out and quiet time is from 10:00 PM to 6:30 AM. All campers are expected to be in their own campsites during that time. If coming back late from the Star Party, please be extra quiet and do not disturb others.

Outdoor Code

Please abide by the outdoor code while at camp. Do not cut or mar trees. Help your Scouts know the importance of caring for trees and all property.

Capitol Area Council prohibits pets, hammocks, drones, and fixed-blade knives on all our properties including Smilin V Scout Ranch. We appreciate your cooperation.

Ground fires are not permitted in campsites during STEMboree.

Visitors

Visitors are not allowed beyond the parking lot for pickup/dropoff. All youth and adults on site must be registered for the event.

Arrivals and Departures

Staff must maintain an accurate head count in case of emergency at all times.

All participants **MUST** check in at the Large Pavilion upon arrival.

All participants **MUST** check out at the Large Pavillion before departing for any reason, including if they are returning.

Uniform

While wearing the official field uniform is always appropriate, it is not required for STEMboree. If desired, it is recommended for traveling to and from camp.

Appropriate Clothing and Footwear

Any Scout-appropriate clothing is acceptable. Not permitted are caps, t-shirts, etc., with words or pictures not representing the best spirit of the Scout Oath and Law.

For safety reasons, closed shoes (sneakers or boots) are to be worn at all times (except in your tent or in the shower). No Crocs or hiking sandals.

A shirt *with sleeves* must be worn at all times.

STEM Gear

There will be some STEM items available for purchase such as t-shirts, patches, and other vintage items while supplies last. Mugs for branding will be available while supplies last.



Lost and Found

Lost and found will be kept at the Large Pavilion. Please take only what belongs to you from the lost and found area. Unclaimed items will be kept at the Fickett Center for 30 days before being donated to a charitable organization.

Camp Staff Areas

Participants are not allowed in the camp staff areas at any time. We ask adults to help enforce this policy.

Health and Safety

The Health and Safety of the Scouts and Scouters is a primary consideration at Smilin V. We provide a Health Officer trained to handle minor accidents or illness. They will generally be at the Large Pavilion.

Medications

Medications to be taken at camp must be controlled by the parent/guardian or unit leader. All medications must be in the proper original containers labeled with the patient's name, medication name and written dosage directions. Adults may dispense medications to scouts but must never allow medication to be in the possession of a scout. The only exceptions are epi pens, inhalers, and other medical devices which the scout is trained on and needs to carry on their person for extreme emergencies; please fill out this form and turn it in at check-in: https://www.bsacac.org/my_files/epi_pen_and_inhalers_cac.pdf

Not Allowed

Adult leaders should not allow the use of tobacco/vape products at any Scouting America activity involving youth participants. In addition, tobacco use in the presence of Scouts is not permitted at camp. Adult Leaders wishing to use tobacco products or vape may do so only in the main parking lot. The consumption, possession, or use of any alcohol, illegal drug or controlled substance is strictly forbidden on any Capitol Area Council property. We will report to authorities where violations involving local, state, or federal laws are reported. Fireworks, pets, personal firearms and ammunition, and personal bows and arrows, of any type are not allowed at camp. In addition, camp policy prohibits the carrying of fixed-blade knives except for the purposes of OA ceremonies and Living History night. Do not touch or take home any wild animal. Pets of any kind are not allowed on camp unless they are a service animal. Violators will be asked to leave camp.

What is COSMIC and What Happened to Nova/Supernova?

“Beginning June 1, 2022, BSA national has delegated STEM Nova and Supernova award program administration to local councils, should they choose to do so. Please see the FAQ at <https://www.scouting.org/stem-nova-awards/stem-faq/>

*With your tremendous support, Capitol Area Council has one of the strongest and most popular STEM programs in the nation, and your STEM committee will continue to administer Nova and Supernova awards as long as there is interest and availability. And rest assured that our **STEMboree** and **STEM Adventure Weekend** events will continue providing mountain-top STEM experiences.*

*Additionally, because the Nova program will no longer evolve, **the CAC STEM committee is developing a comparable parallel STEM award program with a focus on adding new topics and continuously improving the STEM program.** Our goal is to begin with a few Nova-similar award options at the Cub and Scouts BSA levels, with requirements and curricula that provide a deeper STEM dive into Scouting topics and the world around us. Watch for an announcement this fall with a targeted program kickoff in January 2023.*

We have been delighted by all the scouts that have participated in Nova and Supernova over the past decade; we are grateful for all the adult counselors, mentors, and STEM supporters; and we are very happy to continue this program with your support and to explore new opportunities that expand STEM for our scouts.”

*Yours in Scouting,
CAC STEM Committee
June 1, 2022*

COSMIC

While the Capitol Area Council’s STEM Committee continues to support Supernova for a few scouts working on completing those awards, our emphasis is now on supporting the current STEM in Scouting activities (like the Cub Adventures offered at STEMboree) and on developing a new STEM award called COSMIC.

The COSMIC Awards provide STEM experiences for all levels (Lions through older youth programs), have a simple award system, and are expandable and quickly adaptable to new discoveries, youth interests, available expertise, and special events such as the 2023/2024 solar eclipses. We hope that the new program educates and encourages STEM interest in the next generation of scouts.

The specific requirements are under council review and will be shared at the event.

Contact Capitol Area Council (CAC)

STEMboree - Primary Staff Contact

Jessica Snider, Assistant Director of Support Services

Among her many duties, Jessica oversees STEM and Conservation programs and performs conservation research on our council's camp properties.

Office: (512) 617-8651

Cell: (512) 632-9395

jessica.snider@scouting.org

STEMboree - Primary Volunteer Contact

Dr. Tim Urban, STEM Nova Committee Chair

Tim has been volunteering for more than 16 years in the Capitol Area Council as a STEM advocate and resident space expert.

(512) 627-0472

drtimurban@gmail.com

CAC Webpage

<https://www.bsacac.org>

CAC Main Reception Desk

(512) 617-8611

Ron Settele, Director of Support Services

Ron is responsible for developing council camping and training programs, the Scout Shop, and our council's support staff. He reports to the Scout Executive.

Office: (512) 617-8636

Cell: (972) 822-0984

ron.settele@scouting.org

Jon Yates, Scout Executive

Jon supervises our council's professional staff. He reports to our council's Executive Board as well as the Council Service Territory 7 and Scouting America National offices.

Office: (512) 617-8613

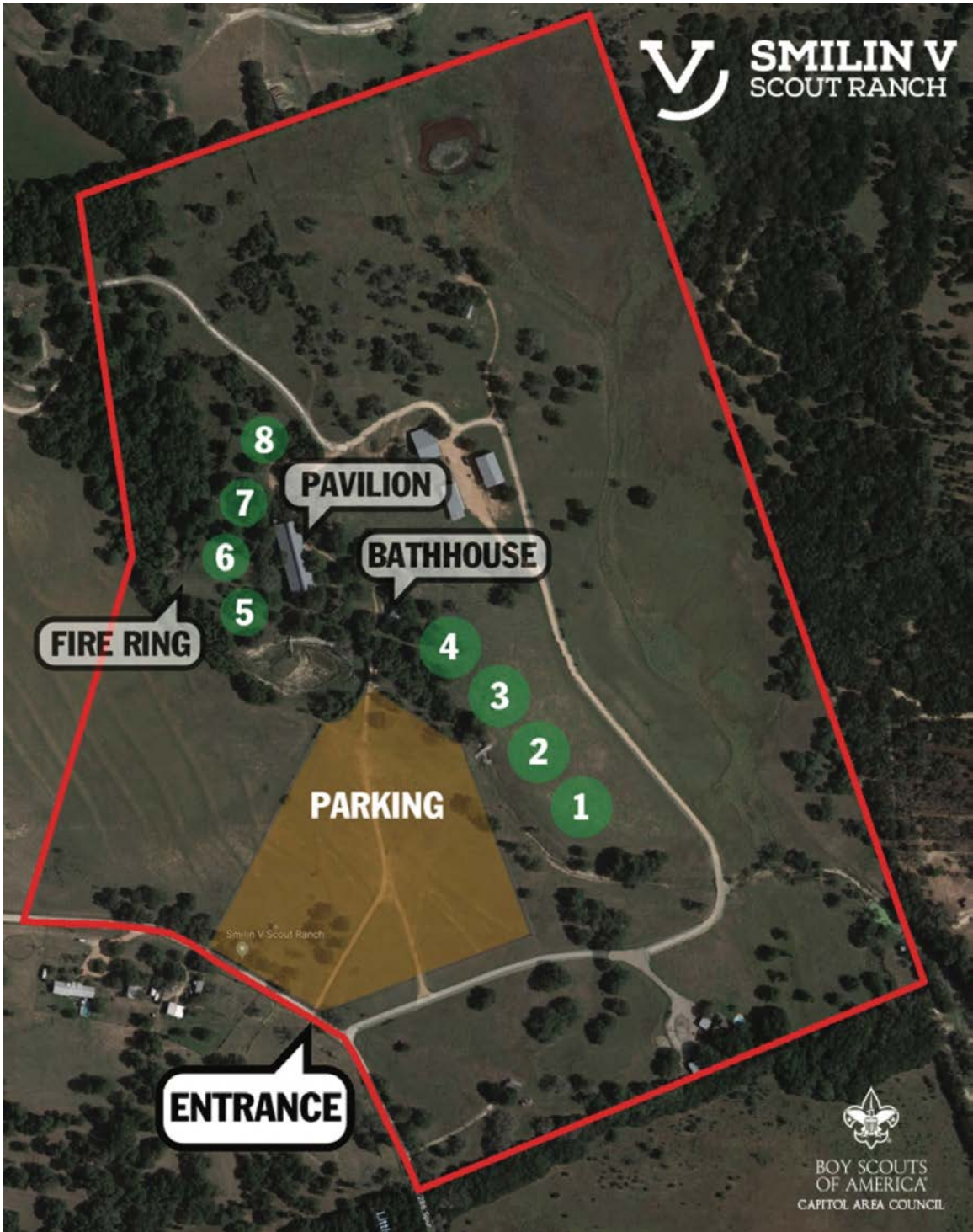
Cell: (512) 496-3289

jon.yates@scouting.org

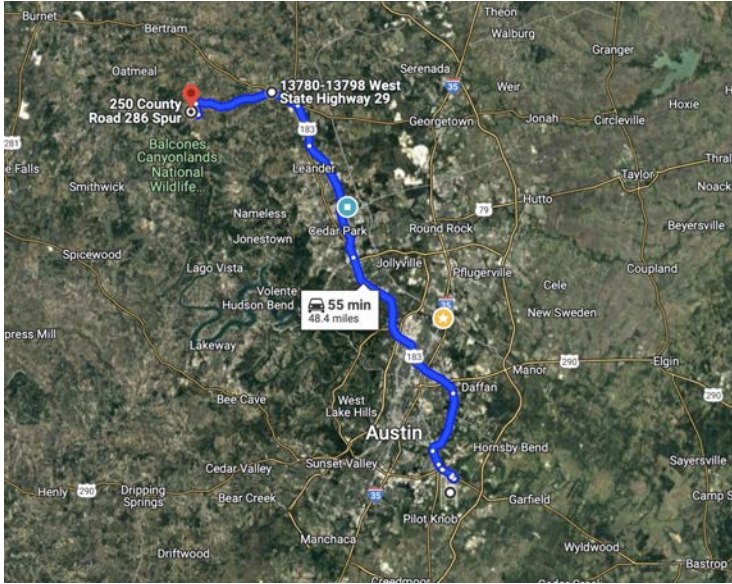
Please reach out if you have any questions about our event.



Appendix A – Map of Smilin V Scout Ranch



Appendix B – Directions to Smilin V Scout Ranch



From Austin, take US-183 north to 29 west in Liberty Hill.

Take 29 west for 2.5 miles, then turn left at the light onto RM 1869.

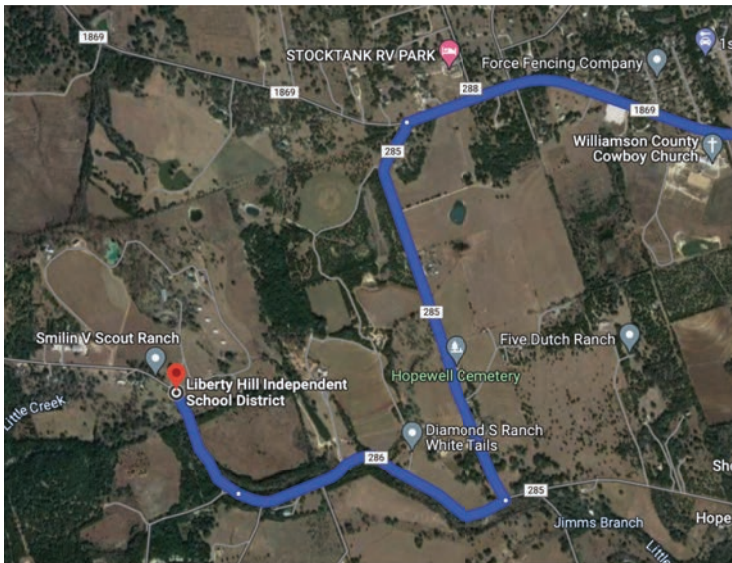
Take 1869 for 6.5 miles, then turn left onto Co Rd 285. (This is the second entrance for 285. Look for the blue Smilin V sign on 1869 before the turn).

After 1.0 miles, 285 will end at 286. Turn right.

Go 0.7 miles and take the slight right onto 286 Spur.

Drive carefully for 0.4 miles. Watch for oncoming traffic. The road is narrow.

Turn right into the second driveway into Smilin V. This is the camp entrance. Follow staff instructions for parking.



Drive times to Smilin V (on a normal day with no traffic):

From North Austin/Cedar Park is about 30 minutes (25 miles)

From Austin-Bergstrom International Airport (ABIA) is about 1 hour (50 miles)

From Dallas/Ft Worth is 3 hours (180 miles)