

OUTDOOR OVERNIGHT ADVENTURE 2024



OUTDOOR OVERNIGHT ADVENTURE

SUMMER 2024

CUB SCOUTS

PARENT GUIDE JUNE 30TH THROUGH JULY 3RD

Version 1.2



BOY SCOUTS OF AMERICA®
CAPITOL AREA COUNCIL

Table of Contents

Location.....	1
Map to Lost Pines Scout Reservation.....	1
Map of Lost Pines Scout Reservation.....	2
General Information	3
Parent Orientation	3
Fees and Check-In	3
Payment Schedule	3
Adult Leadership	4
Uniforms	4
Prohibited Items	4
Facilities	6
Campsites.....	6
Restroom Facilities.....	6
Electricity.....	6
Wi-Fi	6
Food Service.....	6
Trading Post	7
Health and Safety.....	8
First Aid	8
Medicines.....	8
Emergency Plans	8
Personal Vehicles	8
Pool and Waterfront Safety	8
BSA Swim Test.....	8
Leaving Camp	9
Program Schedule	10
Day 1 (Sunday)	10
Days 2 and 3 (Monday and Tuesday).....	10
Day 4 (Wednesday)	10
Program Activities.....	11

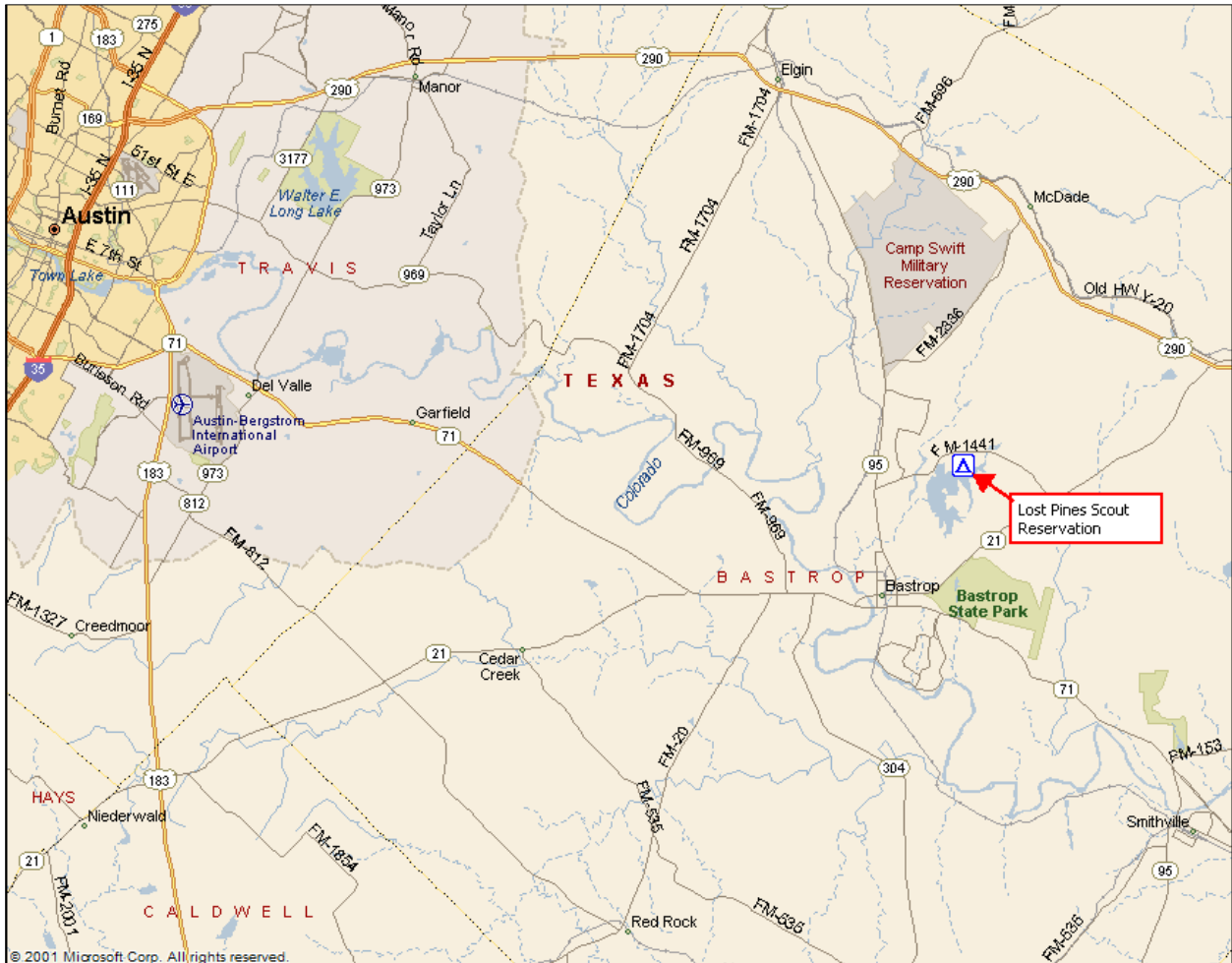
**Outdoor Overnight Adventure 2024
Parent Guide**

Adventures..... 12
What to Bring..... 13
Frequently Asked Questions 14

Location

Outdoor Overnight Adventure is held at the Lost Pines Scout Reservation (LPSR) near Bastrop, Texas.

Map to Lost Pines Scout Reservation



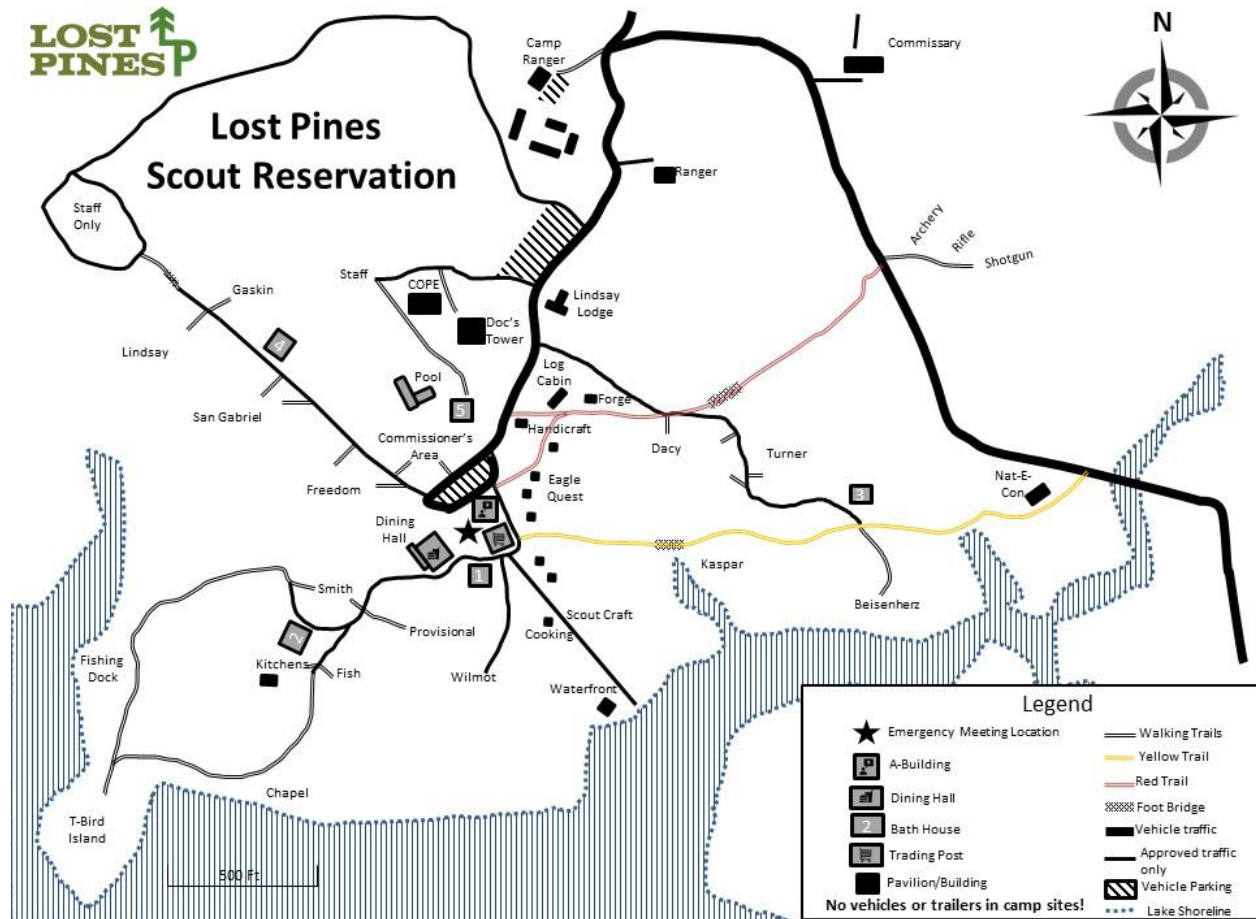
To reach Lost Pines Scout Reservation from Austin using Hwy 290:

- East on Highway 290 to Elgin
- Right on Highway 95 South, approximately 12.8 miles to FM 1441
- Left on FM 1441 East, approximately 3.4 miles to Lost Pines Scout Reservation
- Turn right into Lost Pines Scout Reservation

To reach Lost Pines Scout Reservation from Austin using Hwy 71:

- East on Highway 71 to Bastrop
- Right on Highway 95 North, approximately 3.8 miles to FM 1441
- Right on FM 1441 East, approximately 3.4 miles
- Turn right into Lost Pines Scout Reservation

Map of Lost Pines Scout Reservation



General Information

This handbook provides important information intended to prepare Scouts and parents for a safe and enjoyable Outdoor Overnight Adventure experience. It is STRONGLY RECOMMENDED that parents read this handbook prior to attending camp.

Parent Orientation

The Parent Orientation meeting is scheduled for June 6th, starting at 6:30 p.m., and will be held via Zoom. Click the link below to join the meeting.

Join Zoom Meeting

<https://us06web.zoom.us/j/88210457282>

Meeting ID: 882 1045 7282

Passcode: Scouting

ALL questions will be answered at the Parent Orientation. This is the only Parent Orientation that will be held. While not mandatory, this session is strongly encouraged to provide you the details and understanding of this program for your son(s) or daughter(s).

Fees and Check-In

Scout \$225 (Lion, Tiger, Wolf, Bear, Webelos or Arrow of Light)

Adult \$100 (Parent/Guardian or Registered Leader)

Check-in Sunday, June 30th starting at 1:00 p.m. (Lindsay Lodge)

Check-out Wednesday, July 3rd, by 11:00 a.m.

Go to <https://scoutingevent.com/564-SAC2024> to register!

The Capitol Area Council's refund policy can be found at <https://www.bsacac.org/refund-policy/>.

Payment Schedule

	Due	Youth	Adults
Deposit	At registration	\$25	\$25
First Payment	April 30 th	\$100	-
Final Payment	June 15 th	\$100	\$75

Adult Leadership

Cub Scout parents or legal guardians taking part in an overnight Cub Scout program with their own child or legal ward are not required to register as leaders. All adults must review the [How to Protect your Children from Child Abuse: A Parent's Guide](#) that can be found in the front of each Cub Scout Handbook. In addition, the parent or legal guardian must be accompanied by a registered leader at any time they are with youth members other than their own child/ward. All other overnight adults must be currently registered in an adult fee required position.

This event is only open to youth registered with the Boy Scouts of America.

Lions and Tigers MUST have a parent or guardian present to take part.

For all other ranks a Cub Scout whose parent or legal guardian cannot attend a unit overnight camping trip may participate under the supervision of another registered adult member of the BSA, a parent of a Cub Scout who is also attending. The unit leader and a parent or legal guardian must agree to the arrangement, and all Youth Protection policies apply. At no time may another adult accept responsibility for more than one additional "non-family member" youth.

For Webelos and Arrow of Light, each Scout should attend with a parent or guardian. A Webelos or Arrow of Light Scout whose parent or legal guardian cannot attend a den overnight camping trip may participate under the supervision of at least two registered leaders. The leaders and a parent or legal guardian must agree to the arrangement, and all Youth Protection policies apply.

Uniforms

Scouts and adult leaders are encouraged to wear the official Scout field uniform while arriving at camp. Other times when it would be appropriate to wear the field uniform are evening flag ceremonies, dinner, and campfires. During other times, the activity uniform (Scout shorts and Scouting T-shirt) is considered appropriate. Ideally, T-shirts with den or pack insignias would be worn.

Prohibited Items

- Personal firearms and ammunition, including BB guns, and toy weapons (cap-guns/water-guns)
- Bows and/or arrows
- Weapons of any kind
- Pets
- Electronics
- Fireworks of any kind

Tobacco use in the presence of scouts is not permitted at camp. Adult leaders wishing to use tobacco products or vape may do so only in the Commissioners Area.

The consumption, possession, or use of any alcohol, illegal drug or controlled substance is strictly forbidden on any Capitol Area Council property. We will enforce all local, state, or federal laws where violations involving the above are reported.

Outdoor Overnight Adventure 2024 Parent Guide

While knives are not required for any portion of Outdoor Overnight Adventure, the staff acknowledges that pocketknives are often an integral part of the outdoor Scouting experience. The camp staff mandates that pocketknives be used only under adult supervision, and that all carriers of pocketknives hold a current Whittlin' Chip Card. Unsafe use of knives will result in an adult advisor keeping the knife until the end of camp. According to BSA standards, an "approved pocketknife" is a folding knife of open length less than 6 inches (including handle).

Facilities

Campsites

Tents, with wooden platforms, are provided for all participants (pictures). The picture will give you an idea of what to expect when you arrive at your campsite. Cots are **NOT** provided.

You are also welcome to bring your own tent.

Campsites will be assigned based in two groupings:

1. **Family Camping** – One or more Cub Scouts (Lions, Tigers, Wolves, and Bears) tenting with their parent or guardian.
2. **Den Camping** – Webelos and Arrow of Light Scouts with a parent or guardian, or Webelos or Arrow of Light Scouts under the supervision of at least two registered leaders.



Note: If a family has multiple Scouts, where one/more is a Cub Scout, and the other a Webelos/Arrow of Light Scout, the Webelos/Arrow of Light Scout will spend nights in the Family Camping area with their parent/guardian and sibling(s). They will join the other Webelos/Arrow of Light Scouts for program time.

Restroom Facilities

Lost Pines Scout Reservation has several bathhouse facilities near our campsites and the parade ground that offer showers, toilets, and sinks. These facilities all have running water and electricity.

Electricity

Campsites at Lost Pines Scout Reservation do NOT have electrical power.

- Power strips are provided on the Administration Building porch and at the Dining Hall where adults may charge their phones and other electrical devices.
- In the campsites, CPAP machines must run on a portable power source. Portable power sources may be charged at the Administration Building and the Dining Hall on the power strips provided.
- Running extension cords to tents is prohibited.
- It is prohibited to run a generator on Capitol Area Council properties.

Wi-Fi

We recognize that adults are taking time away from their personal life and work to be with us at camp. Wi-Fi is available inside the air-conditioned Dining Hall and on the porch of the Administration Building.

Food Service

We strive to provide options that fit the dietary needs/restrictions of our campers. Upon request, we can provide the following options:

- Gluten-free
- Vegetarian
- Poultry Only (No Beef and/or No Pork)

Outdoor Overnight Adventure 2024 Parent Guide

In the online registration system, in the *Update Information* area, please be sure to indicate which members of your family/den require these dietary options.

We do acknowledge that we cannot accommodate every dietary need or restriction. For those cases, microwave ovens and refrigerators/freezers are available in the Dining Hall for campers who may need to prepare food brought from home. Please ensure that items stored in the refrigerators/freezers are labeled with name and unit number.

Trading Post

The trading post will be open at designated times each day. Scouts and adults may purchase camping items, souvenirs, drinks, and snacks.

Health and Safety

Every youth and adult participant attending Outdoor Overnight Adventure will need to have a completed [Annual Health and Medical Record](#) (Parts A and B only), dated within the last twelve months. Part C is not required since Outdoor Overnight Adventure lasts less than 72 hours. If you have any questions about the Annual Health and Medical Record, click [here](#) to be taken to the instruction handout.

Make a copy of all medical forms, leave the original at home, and bring the copies to camp. The medical forms will remain in the Health Lodge for the duration of camp and be returned when you depart.

First Aid

A fully trained first aid person will be available in camp 24 hours a day. Arrangements have also been made at a clinic in Bastrop. ALL injuries (no matter how small) must be reported to the camp staff. As proper records and treatments must be assured, the Capitol Area Council does not advise the use of personal "first aid kits." If you wish to bring your own first aid kit (even if this merely includes band-aids) we ask that you use it sparingly.

Medicines

All medication must be managed by a **parent/guardian or registered** leader. You will also be asked to verify medication will be stored behind two locks, as per BSA requirements.

Emergency Plans

Emergency plans have been developed to handle situations that may arise at camp. Details concerning these plans will be made available at check in.

Personal Vehicles

Personal vehicles are driven to the parking lot where all personal gear is carried a short distance to your campsite on a luggage shuttle. **PACK LIGHT!** No Vehicles are allowed in campsites.

Pool and Waterfront Safety

We are committed to assuring the highest standards of safety in all facets of the camp program, particularly at the pool and waterfront. The pool and waterfront, and ranges are supervised by BSA trained staff that will NOT compromise National BSA policies for assuring the health and safety of all campers.

BSA Swim Test

BSA requires that ALL scouts and adults wishing to participate in aquatics activities have completed a Swim Test within the last 12 months. All youth and adult participants are to be designated as swimmers, beginners, or nonswimmers based on swimming ability confirmed by standardized BSA swim classification tests.

Swimmer Classification

Jump feetfirst into water over the head in depth. Level off and swim 75 yards in a strong manner using one or more of the following strokes: sidestroke, breaststroke, trudgen, or crawl; then swim 25 yards using an easy resting backstroke. The 100 yards must be completed in one swim without stops and must include at least one sharp turn. After completing the swim, rest by floating.

Beginner Classification

Jump feetfirst into water over the head in depth, level off, and swim 25 feet on the surface. Stop, turn sharply, resume swimming, and return to the starting place.

Nonswimmer Classification

Anyone who has not completed either the swimmer or beginner tests is classified as a nonswimmer.

Leaving Camp

If a Scout will be leaving camp before the end of the session with someone other than a parent/guardian, or registered leader, written permission from the parent/guardian **MUST** be provided at the time of check-in. **Scouts must check in/out with the camp director or assistant at the Administration Building.**

Program Schedule

Day 1 (Sunday)

Please eat lunch before arriving at Lost Pines Scout Reservation.

- 12:00 p.m. Check-in starts at Lindsay Lodge
Bring the following paperwork
- Youth Protection Training certification (all adults)
 - Annual Health and Medical Record for all participants (Parts A and B)
- Staff will take you to your campsite. Do not pitch your tent until advised to do so
Guests are welcome to visit the campsite and camp facilities
Proceed to the pool for BSA Swimmer Test
Set up your campsite
- 5:45 p.m. Opening flag ceremony on the parade ground
- 6:00 p.m. Dinner is served in the Dining Hall
- 7:00 p.m. Evening program starts

Days 2 and 3 (Monday and Tuesday)

- 7:00 a.m. Breakfast is served in the Dining Hall
- 7:45 a.m. Flag ceremony starts on the parade ground
- 8:00 a.m. Program activities start
- 12:30 p.m. Lunch is served
- 1:30 p.m. Program activities start
- 5:45 p.m. Opening flag ceremony on the parade ground
- 6:00 p.m. Dinner is served in the Dining Hall
- 7:00 p.m. Evening program starts

Day 4 (Wednesday)

- 7:00 a.m. Breakfast is served in the Dining Hall
- 7:45 a.m. Flag ceremony starts on the parade ground
- 8:00 a.m. Program activities start Cub Scouts
Webelos/Arrow of Light Scouts break camp
- 9:00 a.m. Program activities for Webelos/Arrow of Light Scouts
Cub Scouts break camp
- 10:00 a.m. Closing flag ceremony starts
- 11:00 a.m. Departure

Program Activities

Program Activities offered at camp may include, but not be limited to:

- Archery
- BB Guns
- Bouldering/Climbing
- Canoeing/Kayaking
- Knots/Lashings
- Leatherwork
- Nature Hike
- Rappelling
- Rowing
- Snorkeling
- Stand-Up Paddleboards
- Swimming

Adventures

All scouts will have the opportunity to complete Adventures and earn beltloops and pins.

More detail to follow.

Lion	Tiger	Wolf	Bear	Webelos	Arrow of Light

What to Bring

Mark personal items with the initials of the Scout. It is helpful to pack clothes in separate plastic bags for each day and mark them.

- _____ Official Scout Field Uniform
- _____ Tent (optional)
- _____ Cot (if using camp-provided tents)
- _____ Sleeping Bag and Pillow
- _____ Shoes, plus an extra pair
- _____ Sleep clothes
- _____ Shorts/Long Pants
- _____ Shirts (Scout/Pack T-shirt recommended)
- _____ Extra underwear
- _____ Extra socks
- _____ Sunscreen
- _____ Swimsuit
- _____ Towel
- _____ Watch
- _____ Light Jacket
- _____ Refillable Water Bottle
- _____ Rain gear
- _____ Toothbrush and toothpaste
- _____ Soap and shampoo
- _____ Washcloth
- _____ Comb/Brush
- _____ Dirty clothes bag
- _____ Hat
- _____ Insect repellent (non-aerosol)
- _____ Flashlight/Spare batteries
- _____ Camera

Frequently Asked Questions

- Question:** May we choose our campsite?
Answer: No. Campsites are assigned by the staff based on the *Guide to Safe Scouting* principles and camp program.
- Question:** Does the council provide tents?
Answer: Yes... but bring a cot! You are welcome to use your own tent(s), if you like.
- Question:** Can we park our cars by our campsite?
Answer: No. There is one centrally located parking lot. All cars must park there, and equipment will be transported to your campsite.
- Question:** Can we build a campfire?
Answer: Probably not. The county burn ban is usually in effect in July due to dry conditions. Did we mention it is July in Texas?
- Question:** Ok, no campfires, but what about Dutch Oven cooking?
Answer: If you want to make a treat for your scouts and show off your Dutch Oven cooking skills, that is allowed if you use charcoal. Just check with staff. Keep in mind that Dutch Oven cooking tends to attract scouts... a LOT of scouts.
- Question:** Are pets allowed at camp?
Answer: No. Not even cute ones.
- Question:** Are bikes allowed at camp?
Answer: Yes. Riders must wear a helmet, and only ride during daylight hours on defined paths/roads.
- Question:** Are scouts expected to stay for the entire camp?
Answer: We prefer that Scouts experience the entirety of camp, but it is not required that they stay.

Leaving Camp

If a Scout will be leaving camp before the end of the session with someone other than a parent/guardian, or registered leader, written permission from the parent/guardian **MUST** be provided at the time of check-in. **Scouts must check in/out with the camp director or assistant at the Administration Building.**