

**Bald Eagle District  
Disabilities Awareness  
Camporee Guide**



**September 27 – 29, 2024  
Lycoming County Fairgrounds**

# Contents

Overview .....	3
<b>General Rules and Information .....</b>	<b>3</b>
Registration .....	3
Adult Leaders .....	3
Arrival .....	4
Departure .....	5
Arrow of Light .....	5
Restroom Facilities .....	5
Water .....	6
Trash .....	6
Fires/Campground Safety .....	6
Buddy System .....	6
First Aid .....	7
Alcohol & Tobacco .....	7
Pets .....	7
A Scout is Courteous .....	7
Volunteer Staff .....	7
Contacts .....	7
<b>Equipment .....</b>	<b>9</b>
Unit Gear .....	9
Scout Gear .....	9
<b>Events .....</b>	<b>10</b>
Simulated Disability .....	10
Disabilities Overview (Station) .....	10
Service/Therapy Animals (Station) .....	10
Sign Language (Station) .....	10
Careers for those with Disabilities (Station) .....	10
Blind Room Traverse (Activity) .....	10
Braille Stamped Money (Activity) .....	10
<b>Schedule .....</b>	<b>11</b>
<b>Schedule Notes .....</b>	<b>12</b>
Leaders Meeting/Cracker Barrel .....	12
Flag Raising .....	12
Campfire Program .....	12
Competitions/Games .....	12
Chapel Service .....	13
<b>Map .....</b>	<b>14</b>
<b>Requirements .....</b>	<b>15</b>

## Overview

The Bald Eagle district is excited to run a disabilities awareness camporee where scouts will have the opportunity to earn the merit badge while learning from local disability assistance organizations. The event will be held at the Lycoming County Fairgrounds at 354 E Lycoming St, Hughesville, PA 17737 from Friday September 27<sup>th</sup> to Sunday September 29<sup>th</sup>. Scouts who wish to earn the merit badge must complete a prerequisite (requirement 4) and write a reflection Saturday afternoon of what they learned, including a commitment to have a positive attitude to people with disabilities (requirement 6). Both requirements are printed out at the very back of this packet. We recommend that you tear the last two pages to be copied for all scouts to bring them to the camporee.

## General Rules and Information

These rules are the general framework around which this camporee will be operated. The Scout Oath, Law, and Outdoor Code are the guides for ALL behavior at this Camporee. Individuals who do not follow these guidelines may be required to leave the camporee.

### Registration

- **REGISTRATION DEADLINE: SEPTEMBER 13TH, 2024**
- A registration fee will be charged to cover the cost of camporee supplies, patches, and prizes. All fees must be paid in full by the deadline of September 13th, 2024. Registration will be **\$15** per person for the Earl Bird Registration through August 31, 2024, then the registration fee will increase to \$20 until the deadline of September 13, 2024. Registration is the same cost for those attending the entire weekend or just for Saturday's events.
- Each unit should be prepared with their own two deep leadership. If your unit is not able to provide their own two deep leadership, you must notify the district executive, [Ashley.sparrow@scouting.org](mailto:Ashley.sparrow@scouting.org), by the registration deadline.
- If your unit **MUST** camp with another unit, you will need to notify the district executive, [Ashley.sparrow@scouting.org](mailto:Ashley.sparrow@scouting.org), prior to the event.

### Adult Leaders

- Unit leaders are always responsible for the supervision of their units. **ACTIVE** two deep leadership is always required. Please enforce safety and discipline.
- Every unit must provide at least **ONE ADULT LEADER FOR EVERY EIGHT YOUTH** in attendance at the event with a **MINIMUM OF TWO ADULT LEADERS** per unit.
- **ALL** adults and leaders in attendance at this event must be fully registered prior to the event. *LEADER REGISTRATION POLICY: Effective March 1, 2024, the adult application flow*

*will change to require the completion of the Criminal Background Check (CBC) (results must be received) before the new adult volunteer can assume a leadership role.* This means that all adult registration applications, clearances, and Youth Protection Training must be submitted to the Registrar at the Susquehanna Council Service Center two weeks prior to the start of the camporee to allow proper time to submit and process these applications. The adult leader will get an email notice informing them that their registration is being processed, and they are not to assume any leadership roles until the completion of the CBC. The unit key 3 will also get an email. Once the CBC comes back and there is no follow-up needed, the system will finish registering the person. An email will then be sent to the unit key 3 and the individual letting them know that they are registered as an active leader. This active leader status must be attained prior to the start of the camporee.

## Arrival

- Units should plan to arrive at the fairgrounds after 5:00pm and before 9:00pm on Friday. Please have the following information available at check in:
  - A unit roster of scouts and adults in attendance at the event.
  - Medical form A & B for each scout and leader. Please make sure that the A&B forms are filled out properly including the insurance policy number, any medication that is being taken, and any and all medical conditions and allergies. This helps our health officer and staff be fully prepared for any issues that may arise.
- The check-in station will provide each unit with multiple copies of the event schedule and fairgrounds map.
- During check-in, units will be assigned a station group number. Please write down your group number on top of your schedule. Each unit will also be handed an attendance sheet for their senior patrol leader to hand to each station leader for them to mark the present scouts. **SCOUTS MUST ATTEND ALL STATIONS, COMPLETE THE PREREQUISITE AND THE REFLECTION TO EARN THE MERIT BADGE.**
- Each unit **MUST** provide their blue cards for their scouts. It is the unit's responsibility to turn in completed blue cards alongside merit badge work and pre-requisites during Saturday's flag lowering.
- Everyone in attendance at the camporee will be given a color-coded wrist band meant to signify the registration status, both youth and adults need to wear the wristband. All are required to wear this wrist band from the time of check-in on Friday to check-out on Sunday.
- Units are allowed to have one vehicle and/or trailer parked within the camping area. There is a 5 MPH speed limit when moving within the camping area. All extra vehicles will need to be parked outside the fairgrounds in the designated parking area.

- Units select their campsite on a first come, first served basis. The camping area will have marked walking lanes where no campsites or parked vehicles are allowed. Units are to take a reasonable amount of space with respect to their unit size and equipment.
- Female and male units' campsites must be distinguishable from one another. No unit can have their tents intermingle with other units.
- Although there is electricity throughout the camping area, we are not to be using it. We will be charged an extra fee if the electricity is used without permission. If you need electricity for medical purposes, please contact the District Executive, [Ashley.sparrow@scouting.org](mailto:Ashley.sparrow@scouting.org).

## Departure

- Units must police their entire camping area and have all trash picked up prior to checking out. Scouts should make every effort to leave the area better than they found it.
- Time for check-out will be from 9:30am - 12:00pm on Sunday. Camporee staff will be going around the camping area to ensure unit sites are clean before units depart. The staff member will then allow an adult leader to retrieve the unit's medical forms from the staff pavilion, and to check-out the unit.
- Units will also be responsible for helping to clean the restroom facilities before check-out.

## Arrow of Light

- Arrow of light units are allowed to attend Saturday's events, games and campfire. AOL groups must follow all the same camporee guidelines as all other units. The early bird registration cost for an arrow of light scout is **\$8** until August 31. September 1-13, registration cost for an Arrow of Light Scout is \$10.
- Arrow of light units will participate in events alongside their boy scout troop. If their troop is not in attendance, staff will assign them to a station group upon checking in.
- We wish for AOL groups to check-in at the staff pavilion at 8:00am Saturday. During check-in, the unit leader must provide a unit roster, and medical forms A and B for each scout. If a group is late, but they are registered and have all the necessary forms, they may jump in with their troop at whichever station they're currently at.

## Restroom Facilities

There are restrooms located on both sides of the fairgrounds. Scouts are to be respectful to the facilities. Latrine areas should be checked and cleaned up by everyone throughout the weekend. Misuse of latrine facilities that can be linked to a particular unit will result in repercussions such as the cleaning of the facilities.

## Water

Potable water will be provided at the fairgrounds. Troops will need to bring jugs and bottles to transport the water to their campsite.

## Trash

Each unit will need to bring their own trash container. Units will need to pack out their own trash. Prior to checking out Sunday, units must police their campsites and remove all trash, including articles left behind by previous campers.

## Fires/Campground Safety

- The fairgrounds have authorized **ONLY ABOVE GROUND FIRES**. Units will need to bring their own firepits. All fires should have a 5-foot radius safety zone cleared around them. Safety and fire prevention are the responsibility of everyone at the camporee. Have all necessary fire buckets and firefighting tools available. **Firewood will not be provided.**
- Fire ash or unburnt fuel wood should be drowned in water and then disposed of and be hauled out alongside the unit's trash. **DO NOT DUMP ASH ON THE GROUND OR IN THE GRAVEL PARKING AREA.**
- Any unsafe or improper use of knives, axes, or other tools will result in repercussions for the unit and/or removal from the camporee. Sheath knives and fixed scabbard knives are always prohibited.

## Buddy System

The Buddy System entails that scouts group together in groups of at least two. These scouts then always stay together when they're not at the campsite or alongside the rest of their unit. The Buddy System is one of the ways to ensure that all Scouts are accounted for and is a very important barrier to abuse. The Buddy System guidelines are as follows:

- The buddy system should be used at all times. Aquatics, horseback riding, cycling, canvassing the neighborhood during a fundraiser...you name it, you need a buddy.
- It's recommended that buddies know and be comfortable with each other. No youth should be forced into or made to feel uncomfortable by a buddy assignment.
- It is strongly encouraged to pair scouts of similar abilities, ages and maturity. **Buddy pairs should be no more than two years apart in age and should be a single gender. There are no boy-girl buddy pairs in any programs, including Venturing and Sea Scouts. Adults (anyone over the age of 18) may not be a youth members buddy.** This means that a Venturing crew cannot have a 17-year-old youth be the buddy of a 19-year-old Venturing participant.
- A buddy team may consist of three scouts, when necessary.

## **First Aid**

First Aid should be administered at the unit level. Units should have adequate first-aid supplies as part of their unit's equipment. All injuries, even if treated at the unit level, are to be reported to the camporee first aid officer in a timely manner. Should professional medical assistance be needed, report to the first aid officer, district executive, or any available staff.

**OUR FIRST AID OFFICER WILL BE DENISE STEVENSON, WHO WILL BE AT THE STAFF SITE.**

## **Alcohol & Tobacco**

It is the policy of the Boy Scouts of America that the use of alcoholic beverages and controlled substances is not permitted at encampments or at any activity involving participation of youth members. Adult leaders should support the attitude that they, as well as youths, are better off without tobacco in any form and may not allow the use of tobacco products at any BSA activity involving youth participants. All Scouting functions, meetings, and activities should be conducted on a smoke-free basis, with smoking areas located away from all participants. Smoking areas for this camporee will be in the parking lot outside the fenced fairgrounds. If you must use the smoking area, please take all of your trash with you, do not leave it on the ground.

## **Pets**

No pets are allowed unless they are service animals. Note that there will be service/therapy animals present for disability assistance demonstrations. Scouts must be courteous to the animals and their owners.

## **A Scout is Courteous**

Remember this part of the Scout Law! Stay out of other troop campsites unless invited or given permission to enter. Show respect to others by being at your campsite with lights dimmed and quiet from 11:00pm to 7:00am the next morning.

## **Volunteer Staff**

Adult leaders who are not required to fulfill two deep leadership for their units may attend Friday's leaders meeting and volunteer to help as camporee staff for Saturday's activities. All staff will be given a complimentary large lunch selection on Saturday served at the staff canopy.

## **Contacts**

Any questions or concerns regarding the camporee can be sent to the following:

Event Coordinator Nathan Read via email at [cookkat2000@hotmail.com](mailto:cookkat2000@hotmail.com)

District Executive Ashley Sparrow at [Ashley.Sparrow@scouting.org](mailto:Ashley.Sparrow@scouting.org) or 570-660-9673

Denise Stevenson at [dstevens133@gmail.com](mailto:dstevens133@gmail.com) or 570-660-5885



# Equipment

## Unit Gear

- **MEDICAL FORMS FOR ALL SCOUTS AND ADULTS**
- Unit Roster
- Unit Flags (troop and patrol)
- First-Aid Kit
- Water Jugs
- An American flag can be flown at each unit campsite if desired.
- All units are to bring and prepare their own meals. Note that lunch is only an hour and a half long, so plan your meals accordingly. Adult leaders surpassing the unit's two deep minimums are free to return to the unit's campsite to help prepare for a meal.
- And any other items that your troop would bring while camping.

## Scout Gear

- **MERIT BADGE PREREQUISITES COMPLETED and Signed Blue Cards**
- Class A uniform
- Class B clothes appropriate for the weather
- Toiletry supplies (Toothbrush, Toothpaste, Soap, etc.)- no showers available
- Tent
- Mess Kit
- Sleeping gear appropriate for the weather
- Poncho/Rain gear
- Water bottle (**STAY HYDRATED**)
- Watch
- Pen/Pencil
- And any other items that you would bring and need while camping.

## **Events**

### **Simulated Disability**

During the leaders meeting Friday night, each unit will receive the disability equipment for their unit. Scouts will either be given an arm sling to simulate a loss of a limb, ear plugs to experience partial deafness or special safety glasses to experience partial blindness. Following Saturday's flag raising and prior to any of the events, units' leaders will have their scouts put on their assigned equipment. We ask for leaders to monitor that scouts do not remove the simulated disability, including during lunch, until we collect the equipment at 3:00pm Saturday.

### **Disabilities Overview (Station)**

Volunteers will explain different types of disabilities and standard accommodations for them. They will explain the meaning of advocacy. Individuals with disabilities will be donating their time to answer respectful questions from the scouts about their disabilities/daily life.

### **Service/Therapy Animals (Station)**

Volunteers will explain and demonstrate how service animals assist those with disabilities. They will explain how those with disabilities learn to trust their animals. All scouts ought to be respectful to the animals and their owners. Only touch the animals if the owner allows you to.

### **Sign Language (Station)**

An American sign language instructor will help teach the scouts about how to sign common words and phrases. Scouts will learn the origins of ASL and how it grew to what it is today.

### **Careers for those with Disabilities (Station)**

Volunteers from a local company who provide career opportunities for those with disabilities will highlight some of the jobs and accommodations they provide.

### **Blind Room Traverse (Activity)**

Scouts will be provided with a blindfold and a cane to try to navigate a mock house. Scouts will be given a couple household tasks to try to complete while blind.

### **Braille Stamped Money (Activity)**

At the same station with the blind traverse, scouts will have time to study the different braille symbols for each denomination of money. Then each scout will be blindfolded and handed a wallet with 10 braille stamped bills inside of it. Scouts will have 3 minutes and 2 guesses to say how much money was in their wallet. Scouts who are successful in time will be given a prize.

## Schedule

### Friday Sept. 27

4:00pm	Staff Arrival
5:00pm – 9:00pm	Troop Arrival and Campsite Setup
9:00pm	Cracker Barrel
11:00pm	Taps. Lights out. Quiet until morning

### Saturday Sept. 28

7:00am	Reveille, Breakfast
8:15am	Flag Raising, Announcements
8:40am – 9:30am	Station 1
9:30am – 9:40am	Rotate to next station
9:40am – 10:30am	Station 2
10:30am – 10:40am	Rotate to next station
10:40am – 11:30am	Station 3
11:30am – 11:40am	Rotate to next station
11:40am – 12:30pm	Station 4
12:30pm – 1:45pm	Lunch
1:45pm – 2:45pm	Select Activities
2:45pm	Return Disability Equipment/Attendance Sheet
3:00pm – 5:30pm	Disability Inclusive Games
5:30pm – 7:30pm	Dinner
7:30pm	Campfire
11:00pm	Taps. Lights out. Quiet until morning

### Sunday Sept. 29

7:00am	Reveille, Breakfast
8:30am	Interfaith Service
9:00am	Closing and Awards Ceremony
9:30am – 12:00pm	Departure

## Schedule Notes

### Leaders Meeting/Cracker Barrel

There will be a short meeting for all unit leaders, staff and senior patrol leaders Friday at 9:00pm at the staff pavilion. We ask for leaders to bring pen and paper to write down notes. Refreshments and snacks will be provided following the meeting.

### Flag Raising

All scouts must wear their class A uniforms to flag raising. Troop flags are to be carried to flag raising. During the leaders meeting, we will be asking for any units to volunteer scouts to help with honor guard duties. To give the units more time Saturday night, we will not be lowering the flag, but instead lighting it so it can fly during that night.

### Campfire Program

Saturday night there will be a campfire program of songs and skits that will bring the day's activities to a close. Each unit will be required to have a skit/song for the campfire. Each unit will be required to **BRING THEIR SKIT/SONG WITH THEM TO FRIDAY'S CRACKER BARREL**. All skits/songs must be approved. Please see the attached National BSA Ceremonies and Campfire Guidance for what is not appropriated in skits and songs.

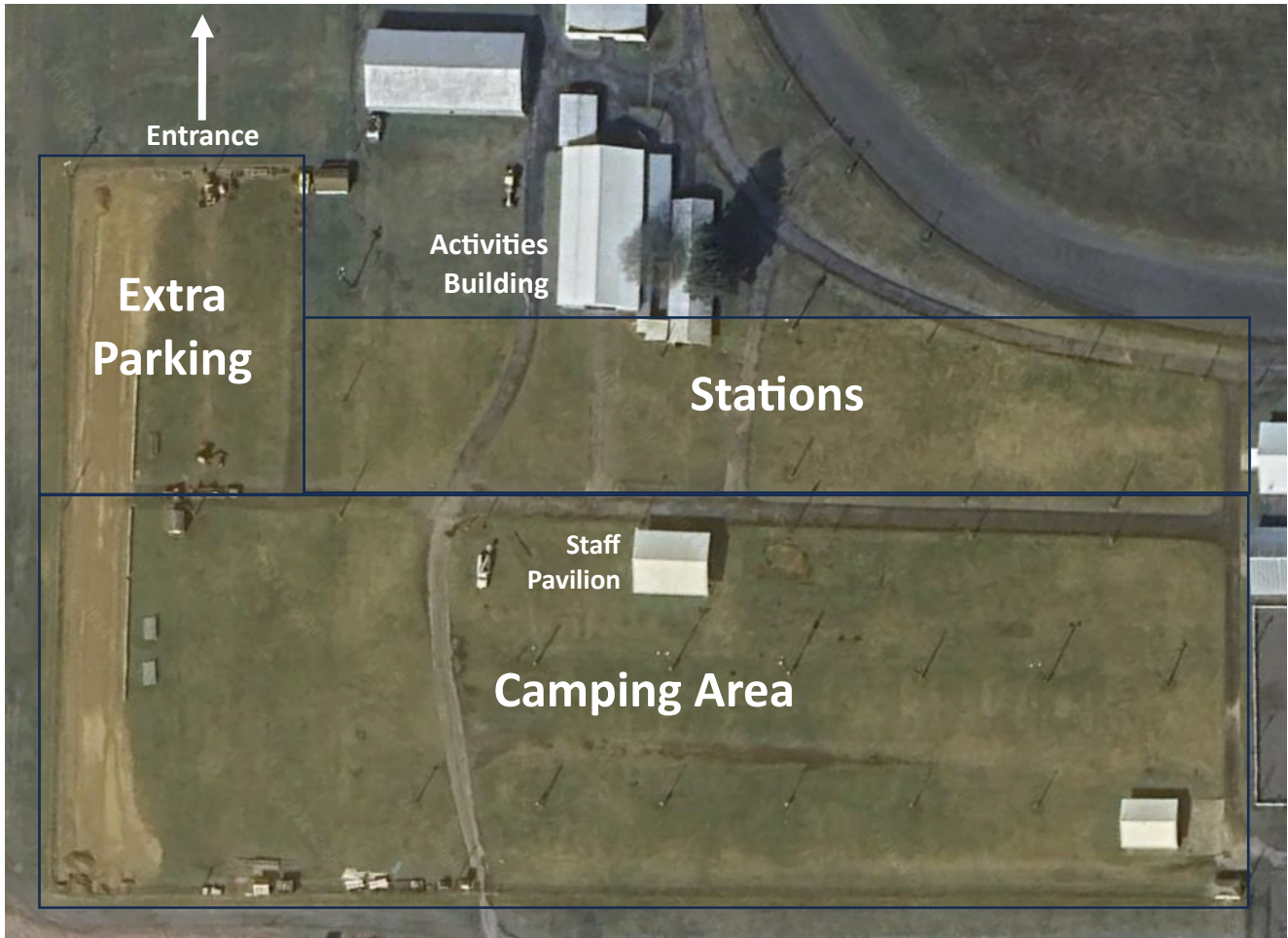
### Competitions/Games

This camporee will **NOT** be holding any cooking competitions to allow time for other activities. Instead of the cooking competition, we are excited to hold a wheelchair basketball tournament, one-handed volleyball and seated bowling Saturday afternoon. The basketball tournament will be the only organized game where 1<sup>st</sup> and 2<sup>nd</sup> place will be awarded with a trophy. The tournament will start at 3:00pm Saturday. Each unit can have up to 3 teams of 5-9 players with 1 adult leader coach. Units without enough scouts may group together to make a team. Games will be first to 21 points or until 15 minutes have passed, if the score is tied, next team to score wins. Scores behind the 3-point line will be 3 points and 2 points when in front of it. Horseplay and fouls will reward the other team with 1 point. Fouled players must rotate with a player on the bench. Coaches are responsible for each teammate getting a chance to play. The tournament will be single elimination, but each team who hasn't played at least two games can play another match after the tournament ends.

## **Chapel Service**

At 8:30am Sunday morning, there will be a non-denominational chapel service. Volunteers will be gathered to help run the service.

## Map



The entrance is located on the west corner of the fairgrounds at 354 E Lycoming St, Hughesville, PA 17737. You will need to drive down the edge of the lot to reach the south corner, where we are holding the camporee. Check-in will be at the end of the entrance road, where you'll receive a more detailed map and your unit's station schedule.



**TO BE COMPLETED SATURDAY AFTERNOON**

6. Make a commitment to your merit badge counselor describing what you will do to show a positive attitude about and toward people with disabilities and to encourage positive attitudes among others.


Discuss how your awareness has changed as a result of what you have learned.
