



# PLAN YOUR IDEAL YEAR OF SCOUTING



Everything you need to make Scouting Fun and exciting during 2024-2025.



Program Workbook: Earn a special Pack flag ribbon for completing this process by Aug 31, 2024.

**Scouting America**  
Cascade Pacific Council

Want to learn more? Contact us!  
<https://cpcbsa.org/Planning>

# YOUR 2024-2025 PROGRAM PLANNING TOOLS

## Your Step-by-Step Guide to a Fun, Impactful Cub Scout Program!



### Checklist:

- Gather school calendar, previous years Pack calendar, and council calendar (Appendix)
- Gather Bank Account with previous years' statements.
- Schedule Planning Mtg: \_\_\_\_\_
- See Council Segment List (next Page)
- Plan Events: See Suggestions Below plus, segment list, plus other events you choose.

Fall Popcorn Fundraiser	Blue and Gold Ceremony
Fall Friend Event/Join Night	Spring Scouting For Food 3/1/2025
New Parent Orientation	Spring Recruiting Event
University of Scouting 11/2/2024	Summer Camp 2025
Fall/Winter Service Project	Little Buckaroo Horse Ride
Winter Lodge Snow Day	Camp4all presentation: Jan- March
Pinewood Derby	
Spring Snack Attack	

Activity (Segment)	No Scouts	Cost/Scout	Total Cost	Date
Sept Pack Meeting	22	\$ 5.00	\$ 110	9/28/23
Recruitment	20	\$ 10.00	\$ 200	9/14/23
School Clean up Day	20	\$ 5.00	\$ 100	9/1/23
			\$ 0	
Oct Pack Meeting	25	\$ 2.00	\$ 50	9/25/23
Pumpkin Patch	20	\$ 10.00	\$ 200	9/21/23
Webelos Woods	5	\$ 25.00	\$ 125	9/20/23
Winter Lodge Clean up (Adult Only)	0		\$ 0	

### Quick Planning Steps

- A. Review Segments, Catalog, previous calendars and begin filling out worksheet with Activities and dates. (Example above)
- B. Estimate the number of youth and Costs per youth for each Activity.
- C. When you have scheduled a year, the worksheet will total the Activity expenses on the Budget Sheet.
- D. Estimate the per Scout, per Adult, and General Operating Expenses.
- E. Once you have the Total Costs you can begin trying to fund your year. Popcorn Sale, Spring Sale, Holiday sales, Can drives, Cookie sales, Cake Auctions are all things you can do to fund your year.
- F. Just enter in Commission, and the form will show you how much you need to sell as a pack and per Scout.
- G. Your challenge is to fund your whole year.
- H. You may choose to handle the Summer Camp and monthly non pack meeting separately.

### Pack Budget Worksheet

Pack Number

#### EXPENSES

Monthly Activities Fees	Per Scout	# Scouts	Total
	1565	24	1565

Scout Fees Per Scout	# Scouts	Total
BSA Registration	\$ 80.00	
Scouts Life	\$ 15.00	
Uniform	\$ 25.00	
Handbook	\$ 10.00	
Advancements	\$ 20.00	
Summer Camp	\$ 300.00	
<b>Total Cost Per Scout</b>	<b>\$ 450.00</b>	<b>24</b>
		<b>\$ 10,800.00</b>

Adult Fees	# Adults	Total
Registration	\$ 70.00	15
Training	\$ 10.00	
Recognition	\$ 20.00	
<b>Total Cost Per Adult</b>	<b>\$ 100.00</b>	<b>15</b>
		<b>\$ 1,500</b>

Operating	Total Operating
Facilities	\$ 500.00
Equipment	\$ 250.00
Miscellaneous	\$ 250.00
<b>Total Operating</b>	<b>\$ 1,000.00</b>

Total Pack Expenses	Per Scout	Total
	\$ 623.54	\$ 14,965.00

#### REVENUE

Fundraising	Total Expenses	Commission	Sales needed	Sales /Scout	Goal	Goal /Scout
Popcorn Sale Candy	\$ 14,965.00	30.00%	\$ 49,883	\$ 2,078	\$ 26,000.00	\$ 1,083.33
Sale Other	\$ 7,165.00	30.00%	\$ 23,883	\$ 995	\$ 17,000.00	\$ 708.33
Other Funding 1	\$ 2,065.00	100.00%	\$ 2,065	\$ 86	\$ 2,200.00	\$ 91.67
Other Funding 2	-\$ 135.00	1.00%	-\$ 13,500	-\$ 562		
Other Funding 3	-\$ 135.00	1.00%	-\$ 13,500	-\$ 562		\$ 0.00
Dues Total	-\$ 135.00					
Dues per Scout	-\$ 5.62					

	Activity (Segment)	No Scouts	Cost/Scout	Total Cost	Date
Sept					
Oct					
Nov					
Dec					
Jan					
Feb					
Mar					
April					
May					
Jun					
Jul					
Aug					

Pack Planning Worksheet

Grand Total

# Pack Budget Worksheet

Pack Number  
Cubmaster

## EXPENSES

Monthly Activities Fees Per Scout # Scouts Total Email

--	--	--	--

Scout Fees Per Scout	# Scouts	Total
BSA Registration		
Scouts Life		
Uniform		
Handbook		
Advancements		
Summer Camp		
<b>Total Cost Per Scout</b>		

Adult Fees	# Adults	Total
Registration		
Training Recognition		
<b>Total Cost Per Adult</b>		

Operating	
Facilities	
Equipment	
Miscellaneous	
<b>Total Operating</b>	

<b>Total Pack Expenses</b>	<b>Per Scout</b>	<b>Total</b>

## REVENUE

Fundraising	Total Expenses	Commission	Sales needed	Sales /Scout	Goal	Goal /Scout
Popcorn Sale						
Candy Sale						
Other Funding 1						
Other Funding 2						
Other Funding 3						
Dues Total						
Dues per Scout						

Once you have completed your Calendar and Budget Worksheet. Email them to [carrie.hutchcraft@scouting.org](mailto:carrie.hutchcraft@scouting.org) to receive a Ribbon for your Pack Flag.

# Council Activity Segments for Cub Scouts



BOY SCOUTS OF AMERICA®  
CASCADE PACIFIC COUNCIL

Use for Program Planning and immediate retention:

**Central Emblem:** The circular council patch is worn centered on the right uniform pocket (in the temporary position). Segments are sewn around this emblem. Segments are for youth participants in den or pack activities only. Excess segments may also go on the red vest.

Please be aware that the segment program is a local council program, not a BSA program.



**Adopt-a-School Clean Up** - Successfully complete a unit-approved conservation activity.



**Campfire** - Participate in a Campfire program or build a campfire.



**Anniversary** - Participate in a Pack activity that displays Scouting to the public during the February anniversary.



**Capital** - Visit the Capital Building.



**Ape Caves** - Hike Ape Caves. Learn about its history.



**Civic Service** - Participate in a service project (does not include Scouting for Food).



**Archery** - Participate in an Archery activity at a council camp.



**Climbing** - Participate in a Pack or Den climbing activity.



**Art & Music Appreciation** - Visit an Art Museum, County Fair, Concert, Play, etc.



**Conservation** - Successfully complete a Unit-approved conservation activity.



**Aviation** - Visit an Air Museum or other aviation-related activity.



**Cub Scout Olympics** - Participate in a Pack-organized Olympics using the President's Challenge Guidelines.



**Barlow Trail** - Hike the Barlow Trail from the summit to the Pioneer Woman's grave.



**End of the Oregon Trail Museum: Visit the End of the Oregon Trail Museum in Oregon City.**



**Baseball** - Attend a Baseball Sporting Event or learn the rules and play baseball with your den or pack.



**Fireman Hat** - Participate in a Pack or Den visit to or by a Fire-Fighter professional.



**Basketball** - Attend a basketball game or learn the rules and play basketball with your pack or den. Coming Soon



**First Aid/Red Cross** - Participate in a Pack or Den visit to or by a Medical professional.



**BB Gun** - Participate in a BB gun activity at a Council camp.



**Fishing** - Go fishing with your Den or Pack or Participate in a fishing derby.



**Bike Rodeo** - Participate in a Pack or District sponsored bike rodeo.



**Football** - Attend a football game or learn the rules and play flag football with your den or pack. Coming Soon



**Bowling** - Participate in a Pack or Den bowling activity.



**Fort Clatsop** - Visit the museum, tour the Fort, and/or hike two miles of the Fort-to-Sea Trail.



**Butte Creek Horse Trip** - Webelos visit Butte Creek and participate Ride or Cubs Participate in lil Buckaroo.



**Fort Vancouver** - Visit the Fort Vancouver Museum and tour the historic fort.



**Fundraiser** - Take part in a Pack fundraiser.

	<b>Geocache</b> - Participate in a Letter-Boxing or Geocaching activity.		Participate in a Choose Kindness Program to promote inclusion and avoid bullying. Coming Soon		<b>Soccer</b> - Attend a Soccer game or participate in a Soccer program.
	<b>Hockey</b> - Attend a Hockey Sporting Event. Coming Soon		<b>Patriotic Service</b> - Place flags in a cemetery, raise the flag at school, or take part in an other Patriotic Service.		<b>Solve</b> - Participate in a SOLVE event. <a href="http://www.solveoregon/get-involved/boy-scouts">www.solveoregon/get-involved/boy-scouts</a>
	<b>Helping/Seeing</b> - For Webelos who participate in a special activity with a local Boy Scout troop.		<b>Pinewood Derby</b> - Build and race a car in a Pack-organized Pinewood derby event.		<b>Space Derby</b> - Build and race a space derby rocket in a Pack-organized event.
	<b>Hiking I</b> - For beginning hikers. Short non-demanding hike.		<b>Popcorn</b> - Participate in your Unit's Scout popcorn sales program.		<b>Tiger Paw</b> - Complete the First grade as a Tiger Cub.
	<b>Hiking II</b> - Participate with your Den in a hike that requires you bring a backpack for supplies.		<b>Pumpkin Patch</b> - Visit a Pumpkin Patch as a Den or Pack activity.		<b>Train</b> - Visit a model railroad club, railroad museum, ride a train, etc.
	<b>Ice Skating</b> - Participate in a Pack or Den ice-skating activity.		<b>Recruiter (Hi!)</b> - For any Cub Scout responsible for bringing a new Cub Scout into the program.		<b>Tree Plant</b> - Participate in a Tree plant activity.
	<b>Kite Derby</b> - Build a kite and participate in a Den or Pack Kite Derby.		<b>Recycle</b> - Visit a recycle facility or participate in a Unit-approved conservation activity.		<b>Unit Activity</b> - For a special Den or Pack activity approved by the Pack and not covered by another segment.
	<b>Learn to Swim</b> - Successfully complete a Pack learn-to-swim program.		<b>Raingutter Regatta</b> - For all who build and race a boat in a Pack-sponsored Raingutter Regatta.		<b>Webelos Camporee</b> - Webelos participate in a District Camporee with a Webelos Program.
	<b>Living Service</b> - Adopt someone homebound, visit a nursing home, brighten someone's life.		<b>Resident Camp</b> - Attend a Resident Camp.		<b>Webelos Campout</b> - Participate in a Den or Pack-organized parent/son Webelos Campout.
	<b>Magness Tree Farm</b> - Visit and tour the Magness Tree Farm.		<b>Rocket/Space Derby</b> - Participate in a Rocket making and launching event.		<b>Whale Watching</b> - Go whale watching with your Den/Pack, visit a Whale-Watching Center.
	<b>Masks</b> - Participate in Pack or Den skits. Pack or Den outings related to; comedy,theater,movies, etc.		<b>Roller Skating</b> - Participate in a Pack or Den roller skating activity.		<b>Whittling Chip</b> - Learn knife safety and whittle a project such as a neckerchief slide.
	<b>Multnomah Falls</b> - Visit the Visitor's Center and/or hike one of the nearby trails.		<b>Science &amp; Nature</b> - Discover our world through hatcheries, wildlife refuges, parks, etc.		<b>Winter Activity</b> - Take part in a Wintertime activity such as inner-tubing, ice skating, igloo-building, or sledding.
	<b>National Summertime Pack Award</b> - For Cub Scouts whose Pack has met the requirements.		<b>Scouts Life</b> - For any Cub Scout whose Pack is 100% Scouts Life (one subscription per family).		<b>Wreath</b> - Take part in a holiday event such as caroling.
	<b>Northwest History</b> - Experience the history of our Great Northwest. Visit a Museum or historic house, take a ferry ride, etc.		<b>Scout Sunday/Sabbath</b> - Observe Scout Sunday/Scout Sabbath at the house of worship of your choice.		<b>Youth Protection</b> - For all Youth who view online Kids Safety program.
	<b>STEM</b> : Participate in a Science, Technology, Engineering or Math activity. ie: Complete a Nova Award.		<b>Silver Creek Falls</b> - Hike one of the trails and visit the historic South Lodge.		<b>Zoo Fun</b> - Visit the Oregon Zoo, or any other zoo as part of a Pack or Den activity.
	<b>OMSI</b> - Visit the Oregon Museum of Science and Industry.				
	<b>Parade</b> - For participating in any parade.				

These segments are to be used as a supplemental recognition system for activities not covered by other awards or recognitions to broaden the range of experiences available to the Cub Scout. Feel free to submit ideas for future segments to [info@cpbsa.org](mailto:info@cpbsa.org)

## Appendix: This information you may find helpful.

The Following information is provided as a resource tool for unit leaders. We want you to have a resource that has most of the things you need to operate Cub Scouting. There is so much information and it could be overwhelming.

What is provided here is optional for your review. It is not required information for your annual planning.

**A: How to Grow Your Pack**

**B: Catalog of Council**

**C: How to learn what we do**

**D: What is Cub Scout Summer Camp**

**E: How to Use Council Facilities**

**F: How to Fund Your Year**

**G: What are the Scouting Safety Rules**

**H: Where Do We Go for Help.**

**I: Council Calendar**



**#ADVENTUREON**

# Appendix A: How to Grow Your Pack.



BOY SCOUTS  
OF AMERICA  
CASCADE PACIFIC COUNCIL

## THE ULTIMATE JOIN NIGHT & UNIT MARKETING CHECKLIST

Here's what other Cub Scout packs have found successful to grow. (Remember: more kids means more parent volunteers and more fun for all!) And though this may seem like an exhaustive list, many items take only a moment:

- Download social media graphics at [cpcbsa.org/recruiting](http://cpcbsa.org/recruiting)
- Create a public-facing Facebook page for your Scout unit.
- Connect your Facebook page to the CPC at [cpcbsa.org/marketing](http://cpcbsa.org/marketing) (We'll post additional fun things to help keep your social media feed fresh!)
- Ask parents to like/follow your page.
- Create your first post.
- Ask parents to **share the post**. (Pro Tip: make this a weekly habit!)
- Choose your Join Night date, location & activity.
- Use the enclosed Postcards and Labels to create an invitation to your Join Night.  
(A downloadable Word template & label ordering can be found at [cpcbsa.org/recruiting](http://cpcbsa.org/recruiting))
- **Ask each family to invite 1 friend per Scout** to your join night via text AND a postcard.  
(Friends can put the postcard on their refrigerator as a reminder!)
- Put yard signs and banners up in your neighborhood! Order yours at [cpcbsa.org/recruiting](http://cpcbsa.org/recruiting)
- Put up a poster in your school and/or meeting place!
- Post your Join Night information on [NextDoor.com](http://NextDoor.com)
- **MOST IMPORTANTLY: HAVE FUN AT YOUR JOIN NIGHT!**

NEED HELP? CONTACT  
INFO@CPCBSA.ORG

MARKETING  
TOOLKIT



DIGITAL  
DOWNLOADS



ORDER  
MATERIALS





# Appendix B.1: Council Activity Catalog

**GRIT STARTS HERE** 



**Fun for Families & Friends**

 **BOY SCOUTS OF AMERICA**  
CASCADIA PACIFIC COUNCIL

**ALL YOUTH**  
GRADES K-5

## Camp Work Weekends

Thousands of acres of council property need to be spruced up after each winter in preparation for spring and summer camping activities, and we need your help! Each camp has at least one “work weekend” or day of service. Families, packs, troops, companies, service clubs: all are welcome to join in the fun and light labor. Meals are provided and the fun is complimentary.

### WHEN:

**2024**

**Pioneer -Sept. 9/8-9/10**

**Baldwin-Oct. 6-8**

**2025**

**Meriwether/Clark - April 19-21**

**Baldwin -May 17-19**

**Butte Creek - May 31-June 2**

**Cooper - May 31-June 2**

**Pioneer-June 7-9**

**INFO:** <https://cpcbsa.org/members/work-weekends>



## Cub Scout Summer Camp

### Which camp is best for my Cub Scout?

Our **overnight camps** are designed to be a progression for age groups and abilities.

**Butte Creek** is recommended for Tigers, Wolves and Bears (but all are welcome!).

Butte Creek is a western-themed overnight camp that will intrigue the imaginations of our younger Cub Scouts. **Baldwin Webelos Experience** is a Webelos camp for



scouts entering the 4th and 5th grades and includes more challenging activities that will excite Webelos & Arrow of Light age scouts and prepare them to join a troop. **INFO/ DATES:** [www.cpcbsa.org/summercamp](http://www.cpcbsa.org/summercamp)

## Cub Scout Super Weekends

This is an excellent event for Cub Scout Packs to camp and experience some of the programs they will see at camp. BBs, Archery, Campfires, games and more. Packs will bring their own food and cook in their campsites. Also, tons of Beach fun.

**WHEN:** **Oct. 6-8, Mar. 1-3, 2024, April 5-7, 2024**

**WHERE:** Camp Clark  
<https://cpcbsa.org/events>

## District Camporees

Camporee is the opportunity for Webelos and Arrow of Light Scouts to spend a day participating with Troops. The Troops will be camping, showing Scout skills, having fun, and enjoy good fellowship while learning from each other.

**WHEN:** Check your District’s calendar for dates.

**WHERE:** Varies

**INFO:** <https://cpcbsa.org/events>



## Holiday Weekend Family Camps

Do you love to go camping with your family over the Memorial Day and Labor Day weekends but can’t stand the noisy, crowded public campgrounds? We have a great way for your family to enjoy the outdoors over these holiday weekends. Come to Camp Clark for a fun, relaxing weekend at the beach! **We provide a light program for those who wish to stay in camp.** Many families tour local attractions during the day and return to Camp Clark as their base camp.

**WHEN:** Labor Day & Memorial Day Weekends 2024



**Join us for family fun & outdoor adventure!**

Open to all youth grades K-5!




**WHERE:** Camp Clark, Tillamook

**INFO:** [www.cpcbsa.org/events](http://www.cpcbsa.org/events)



## Lil Buckaroo Cub Scout Horse Experience

A fun and instructive introduction to horsemanship for Cub Scouts, ages 6 to 9 at Butte Creek Scout Ranch! Cubs will learn about the history and nature of horses; how to be around horses safely; horse care and basic riding skills; and cowboy gear.

**WHEN:** Oct.- May

**WHERE:** Butte Creek Scout Ranch

**INFO:** [www.cpcbsa.org/adventures/weekend-horse-rides](http://www.cpcbsa.org/adventures/weekend-horse-rides)

## Scouting for Food & Walk n Knock

“To help other people at all times.” By participating in the Scouting for Food program, Scouts come a step closer to fulfilling those words. Always the first Saturday in March, Scouters hit the streets to collect food for those in need. In Washington, the first Weekend in December is Walk n Knock.

**WHEN:** SFF: Saturday, March 1, 2025  
WalknKnock: Dec. 7, 2024

**WHERE:** Various locations

**INFO:** [www.cpcbsa.org/sff](http://www.cpcbsa.org/sff)

# Appendix B.2: Council Activity Catalog



## SOLVE Service

Cascade Pacific Council partners with SOLVE to bring Scouts the opportunity to participate in community service projects. Participate in preorganized service days or create your own event through one of the SOLVE programs. SOLVE provides free cleanup supplies, small grants, advice, and support.

**WHEN:** Year-round

**WHERE:** Various locations

**INFO:** <https://solveoregon.org/youth-and-teen-volunteering>

## University of Scouting (For Leaders And Parents)

University of Scouting is a one-day adult conference full of tips, tricks, and training for adults involved in any Scouting program such as a Pack, Troop, or Venturing Crew. Every leader will leave inspired and armed with new ideas from fellow adult Scouters. You choose the sessions and topics that interest you and learn from volunteers experienced in those subject areas.

**WHEN:** November 2, 2024

**WHERE:** Mt. Hood Community College

**INFO:** [www.cpcbsa.org/Upcoming-events/university-of-scouting](http://www.cpcbsa.org/Upcoming-events/university-of-scouting)



## Weekend Horse Riding

Most youth in today's society will never get a chance to ride a horse, but CPC Scouts can—thanks to a horseback riding program unique to Butte Creek Scout Ranch. Allow our weekend wranglers—experienced rid-

ers—to introduce your Arrow of Light Scouts to horsemanship on a half-day or full-day horseback ride. Your Scouts will get basic instruction and demonstration before the group departs for a ride through forested areas surrounding the homestead.

Throw in on-site camping, and you've got a memorable weekend activity. \*AOL only.

**WHEN:** Weekends, Sept- April

**WHERE:** Butte Creek Scout Ranch, Molalla

**INFO:** [www.cpcbsa.org/horses](http://www.cpcbsa.org/horses)

## Webelos Woods

Webelos Woods is a fun-filled weekend of camping designed to give Webelos & Arrow of Light Scouts an in-depth preview of the Boy Scouting experience. The program centers on areas of interest to any Webelos & Arrow of Light Scout: competitive events, simple Scouting skills, games, meal preparation, and campfires. \*Webelos & Arrow of Light only.

**WHEN:** Late September—October

**WHERE:** Various Locations

**INFO:** [www.cpcbsa.org/events](http://www.cpcbsa.org/events)

## Weekend Camping

Most of the Council's eleven properties are available for weekend camping. Some are primitive sites: Others feature Adirondacks (three-sided cabins that sleep six to eight) or Mini-Daks (tent-sized structures that sleep two) for easy rainy season adventures. Units that reach their Camp4All goal are treated to free use of campsites.

**WHEN:** Year-round; September - May

**WHERE:** Many council properties

**INFO:** [www.cpcbsa.org/rental](http://www.cpcbsa.org/rental)

## Winter Lodge

Cascade Pacific Council operates two lodges on the slopes of Mount Hood. These lodges are operated for Scout use each weekend, December through March. Each weekend date is assigned to a group



(Packs, Troops, Venturing, Families, etc.) to keep the tubing hills safe and everyone smiling. All reservations are made online - units that participate in a Winter Lodge Service Day will get access to the reservation system early in addition to a discount.

**WHEN:** December 2024 – March 2025

**WHERE:** Aubrey Lodge and Nanitch Lodge, Government Camp

**INFO:** [www.cpcbsa.org/adventures/winter-camps](http://www.cpcbsa.org/adventures/winter-camps)



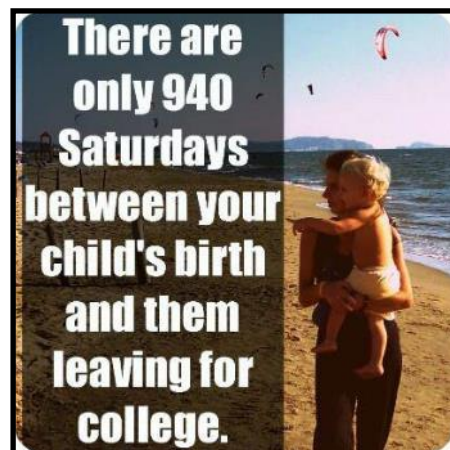
## Wood Badge

Wood Badge is Scouting's most advanced training course, focusing on leadership, personal, and team development. Inspired by Robert Baden-Powell—Wood Badge has provided the ultimate training for thousands of leaders around the world.

**WHEN:** Fall 2024  
Camp Clark

**INFO:** [www.cpcbsa.org/woodbadge](http://www.cpcbsa.org/woodbadge)

**Check [cpcbsa.org/events](http://cpcbsa.org/events) throughout the year for new and exciting events!**



# Appendix C: How do we learn what to do?

## The Magic of Training

If you had a magic wand, would you use it to make the Scouting program better and more fun for youth so they stayed in Scouting longer and have a larger impact on their lives? What if the same magic wand made leadership roles easier, more rewarding, and led to better retention among adult leaders? Would using that magic wand be a top priority?

Well, such a magic wand does exist—in the form of the learning programs for leaders in the Boy Scouts of America. Common sense tells us that training is important, and research shows the value of trained leaders. A trained leader is knowledgeable and more confident in the role being performed. Trained leaders impact the quality of programs, leader tenure, youth tenure, safety, and much more. A trained leader is better prepared to make the Scouting program all it can be!



## Cub Scout Adult Leader Training



### Youth Protection Training is Required every 2 years

Youth Protection training is required for all leaders. All parents are encouraged to complete this training as well. Though the national Youth Protection Training certificate is valid for two years, your council requires all registered adult leaders to complete training annually. This protects children, adult leaders, and the organization by maintaining high vigilance on the important subject and methods of youth protection.

**INFO:** [www.cpcbsa.org/training](http://www.cpcbsa.org/training)

### Position-Specific Training

Position-Specific training is required to be considered "Trained" in the BSA. This training can be completed by **ALL** leaders and committee members online. It is recommended that leaders seek trainings near their district for an "In-Person" training. The live trainings are led by an experienced leader who can directly answer questions, and they are well versed on local council resources.

**INFO:** [www.cpcbsa.org/training](http://www.cpcbsa.org/training)

### Outdoor Training

Since "outing" is most of Scouting, being prepared for the outdoors is essential for all Scouting leaders.

### Basic Adult Leader Outdoor Orientation (BALOO)

, an instructor-led course of camping policies, taught along with the necessary tools to help packs carry out a successful camping experience. Completion of this course is mandatory for at least one adult on a Pack overnighter.

# Appendix D.1: What is Cub Scout Camp

## Cub Scout Overnight Camp: Butte Creek

The moment each Cub Scout steps onto Main Street and sets eyes on the old western town of Butte Creek, he or she will find it easy to imagine themselves as part of the Old West.

The Butte Creek program is designed for those Scouts who come back summer after summer.

Each age group is given different challenges and is able to participate in activities specially built for their level.

Each day, Scouts receive a visit from the Pony Express who delivers the mail. Then they enjoy breakfast, dinner, and supper in the Hotel on Main Street. With full tummies they can run all day enjoying the time learning about Cosmic Cowboy and Bad Bart. They then get to enjoy some rest during our daily homestead time. Each evening is brought to a close with a memorable camp-wide activity.

Activities may include fishing, horse experience, live animals, gold panning, archery, BB Range, crafts, games, campfires, cooking and so much more.

The parents that attend arguably have as much fun as their children.

Camp Sessions are 4 days / 3 nights and run from July through mid August. Scouts and leaders stay in two-person mini-dacks. Meals are served in a large full service dining hall.

**WHEN:** Four-day sessions Sat - Tues and Wed - Sat, July through August 2025

**WHERE:** Butte Creek, Scotts Mills, OR

**INFO:** [www.cpcbasa.org/buttecreek](http://www.cpcbasa.org/buttecreek)



# Appendix D.2: What is Cub Scout Camp

## WEBELOS BIG-ADVENTUROUS-SCOUTING-EXPERIENCE.

Webelos & Arrow of Light Scouts need more challenge. Soon they will join the ranks of Scouts BSA Troops. They will cook their own food, participate in more challenging activities and need to work close together to successfully navigate all the Scouting has to offer.

Camp Baldwin **Webelos BASE Camp** is an upgrade from other Cub Scout camping experiences.

Below is a list of activities that Webelos & Arrow of Light Scouts will be able to do that we do not offer at Cub Resident Camp.

**Cooking:** Scouts will cook their own meals with adult supervision in their campsite.

Baldwin has full outdoor kitchen equipment so you will only need to bring your appetite.

Meal ingredients (according to your campsite needs) and cooking and cleaning supplies are delivered to the campsite regularly

**Swimming and Boating:** Scouts will be able to swim and boat in lake Hanel under the supervision of qualified lifeguards. There are rowboats, sailboats, kayaks, canoes and stand up paddleboards available for those Webelos and parents who are ready for them. Lifejackets are required.

**Shooting Pellet Gun and compound bows:**

Only Webelos & AOLs can shoot pellet guns. These rifles are bolt action CO2 powered and are a wonderful transition between pump action BB guns to .22 rifles used in Scouts BSA. Safety is maintained by supervision by an NRA trained shooting instructor. Though we have the Cub Scout bows available, most older Cubs enjoy using the compound bow at the archery range. These bows use cams to propel the bow with more force than the pull weight of the bow. This allows for more success hitting the target.

**Scouting Skills:** Scouts will learn Pioneering skills which allow for constructing gadgets and structures using poles and rope. In addition, they will learn knot tying, fire building, and knife and ax safety. AOLs will be prepared to enter Scouts BSA and learn early advancement

skills.

Sign your Webelos & AOLs up for B.A.S.E Camp.

Find out more information at <https://cpcbsa.org/project/baldwin-webelos-adventure-camp/>



# Appendix E.1: How to Use Council Facilities

Property (Adirondack: a three-sided shelter) (Program Shelter: an undercover area provided for various Program activities)	Drive Time from PDX	Summer Camp	Weekend Camping	Approved for Cub Scout Camping	Adirondacks	Program Shelters
<b>Camp Lewis</b> <a href="http://www.cpcbsa.org/lewis">www.cpcbsa.org/lewis</a> Camp Lewis consists of approximately 116 acres of tall trees, meadows, river shore, and developed campsites five miles north of Battle Ground, WA. Great features include; fire bowls, large fields for Scout activities, and several large shelters.	:45	No	Yes Sep - May	Yes	Yes	Yes
<b>Camp Ireland</b> <a href="http://www.cpcbsa.org/ireland">www.cpcbsa.org/ireland</a> Camp Ireland is located about two miles north of downtown Hillsboro, OR. The camp is part of a wetland/nature preserve area that offers a close to town experience of the outdoors and some of the best nature trails. Camp Ireland is great for merit badge and advancement campouts.	:30	No	Yes Sep - May	Yes	No	Yes
<b>Camp Baldwin</b> <a href="http://www.cpcbsa.org/baldwin">www.cpcbsa.org/baldwin</a> Camp Baldwin is located in the scenic Mount Hood National Forest near Dufur, OR. Tall evergreens and plentiful wildlife abound. Lake Hanel is available for swimming, boating, canoeing, and fishing.	2:00	Scout BSA Camp	Yes Sep - May	Yes (not winter)	Some Minidaks & Cabins	Yes
<b>Butte Creek Scout Ranch</b> <a href="http://www.cpcbsa.org/buttecreek">www.cpcbsa.org/buttecreek</a> Located near Scotts Mills, Butte Creek is a working ranch and Western town. A fishing pond has both native cut throat and rainbow trout along an exciting weekend horse riding program is available. (Separate reservation is required).	1:20	All Cub Scouts Resident Camp	Yes Sep - May	Yes	Yes & Mini-Dack	Yes
<b>Camp Clark</b> <a href="http://www.cpcbsa.org/clark">www.cpcbsa.org/clark</a> Right on the beach! Take advantage of playing in the sand, examining sea-life in the local marine gardens and enjoy the breathtaking views of the ocean at the base of Cape Lookout.	2:00	Family Camping	Yes Sep - May	Yes	Mini-Dack	Yes

## Council Property Rental

### Pack Camping

Cub Scouts can camp! Every pack's annual plan should include outings in addition to resident camp. Young boys and girls have a great desire for outdoor fun, excitement, and adventure. These experiences encourage them to spend quality time with family and friends. A successful outdoor program that meets the goals of the Cub Scout program ensures that all activities are appropriate for the target age group. Age-Appropriate Guidelines for Scouting activities and the Guide to Safe Scouting are both available on the Cascade Pacific Council website. One member of the Pack must have completed Basic Adult Leader Outdoor Orientation to participate (BALOO) to do pack camping.

**WHEN:** September - May

**INFO:** [www.cpcbsa.org/rental](http://www.cpcbsa.org/rental)

### Weekend Camping

Most of the council's properties are available for weekend camping. Some are primitive

sites; others feature adirondacks (three-sided cabins that sleep six to eight) or mini-dack (tent-sized structures that sleep two) for easy rainy season adventures. Units that reach their Camp4All goal are treated to free use of campsites.

**WHEN:** September - May

**WHERE:** Many council properties

**INFO:** [www.cpcbsa.org/rental](http://www.cpcbsa.org/rental)

### Camp Clark Family Cabin

Our Family Cabins are available to rent most of the year. Two bedrooms, bathroom, shower and kitchenette.

### Mini-dak sleeping

Butte Creek, Camp Clark, and many other of our camps have Mini-dak structures for your use. These are wooden structures with two bunks. You need to bring a sleeping pad for a single bed.



Family Cabin at Camp Clark



Mini-Dack at Camp Clark & Butte Creek

# Appendix E.2: How to Use Council Facilities

Property	Drive Time from PDX	Summer Camp	Weekend Camping	Approved for Cub Scout Camping	Adirondacks	Program Shelters
<b>Camp Ireland</b> <a href="http://www.cpcbsa.org/ireland">www.cpcbsa.org/ireland</a> Camp Ireland is located about two miles north of downtown Hillsboro, OR. The camp is part of a wetland/nature preserve area that offers a close to town experience of the outdoors and some of the best nature trails. Camp Ireland is great for merit badge and advancement campouts.	:30	No	Yes Sep - May	Yes	No	Yes
<b>Camp Lewis</b> <a href="http://www.cpcbsa.org/lewis">www.cpcbsa.org/lewis</a> Camp Lewis consists of approximately 116 acres of tall trees, meadows, river shore, and developed campsites five miles north of Battle Ground, WA. Great features include; fire bowls, large fields for Scout activities, and several large shelters.	:45	No	Yes Sep - May	Yes	Yes	Yes
<b>Camp Meriwether</b> <a href="http://www.cpcbsa.org/meriwether">www.cpcbsa.org/meriwether</a> The mighty Pacific Ocean provides the dramatic backdrop for this full service camp with 2 miles of private beach. The camp includes Lake Chamberlain, a fresh-water lake for swimming and boating, marine gardens, hiking, and rifle/shotgun ranges.	2:00	SBSA Camp	Yes Sep - May	Yes	Yes	Yes
<b>Nanitch Lodge</b> <a href="http://www.cpcbsa.org/winterlodge">www.cpcbsa.org/winterlodge</a> Nanitch Lodge, located just above Government Camp, provides Scouts a wonderful opportunity for winter sports, snow camping, hiking, training experiences, trekking or just enjoying an outing on the mountain.	1:45	No	Yes Scheduled dates only	No	No	No
<b>Camp Pioneer</b> <a href="http://www.cpcbsa.org/pioneer">www.cpcbsa.org/pioneer</a> On Pine Lake in the shadow of Mt. Jefferson, Camp Pioneer offers hiking, backpacking, caving, rugged overnights, and fishing in a beautiful location with the national wilderness area almost encircling the camp. Pine Ridge Lake.	2:45	SBSA Camp	Yes September only due to snow	No	No	Yes
<b>Royce-Finel</b> <a href="http://www.cpcbsa.org/roycefinel">www.cpcbsa.org/roycefinel</a> Royce-Finel is a great camp for year-round camping. Things to do at this camp include hiking to the beach (2 miles), canoeing, fishing, or visiting the nearby Fort Clatsop National Park.	2:00	No	Yes All months	No	No	Yes

## Family Camping

Cascade Pacific Council offers several exciting family camping opportunities for members' families. These outdoor events are offered to help families find fun, affordable things to do in the outdoors at family-friendly locations. Sitting around the campfire is the perfect way to reconnect with family.



## Labor Day Weekend Family Camp at the Beach

Families of Scouts will enjoy activities at the Meriwether Scout Reservation with a few planned activities so that families can pick and choose camp activities, head into town to visit local attractions, or just relax on the beach.



## Memorial Weekend Family Camp at the Beach

Scouting families will enjoy a traditional Memorial Day camp at Camp Meriwether with loosely-planned activities so that families can pick and choose camp activities, head into town to visit local attractions, or just relax on the beach.



# Appendix F.1: How to Fund Your Pack

## POPCORN SALE

**WHEN:** August – November

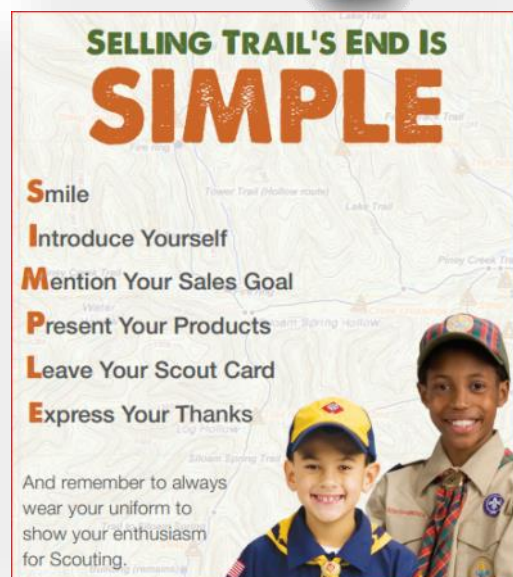
[cpcbsa.org/popcorn](http://cpcbsa.org/popcorn)

Selling Trails End popcorn is a wonderful opportunity for units to earn funds to support their entire year of Scouting. It is also a great way for Scouts to gain confidence and practice communication skills. Every unit should attend a training to get all the information and inspiration they need to run their best sale yet! All sessions open with registration at 6:30pm, training at 7pm, and be done by 8pm! Choose the best one for your schedule. Visit [cpcbsa.org/popcorn](http://cpcbsa.org/popcorn) for all the details.

Visit [www.cpcbsa.org/popcorn](http://www.cpcbsa.org/popcorn) and commit to a fully funded year of Scouting!

### WHY SELL POPCORN?

- Increase your unit and council income—73% stays local.
- Pay for your entire Scouting program.
- Don't just stand at the same store front! Visit new stores and ask to sell and increase sales.
- Scouts learn life lessons by "earning their own way."
- The prize program motivates Scouts.
- Sell online to friends and family out of town.



## Spring Sale

The **Spring Product Sale** is a great way to help our youth attend one of our outstanding summer camps and make memories that will last a lifetime. The skills and lessons learned by selling helps to teach perseverance and builds self-confidence that will last a lifetime.

### Our Products:

- World's Finest Chocolate Variety Pack
- Tillamook Meat Sticks (Earn up to **30% profit**-No risk to your unit!)



### Do Your Best

It's easy...Order your product, get the entire unit to sell, return unopened boxes, keep your commission!

### Do a Good Turn

The council provides opportunities for our youth and units to earn money for unit program and provides additional revenue for the council budget that

supports our camps, programs, and general support to every pack and troop.

### Find Out More

To find out more about the candy sales, visit the council website at [www.cpcbsa.org/candy](http://www.cpcbsa.org/candy).





# Appendix F.2: How to Fund Your Pack

## BSA Fiscal Policies & Procedures for Units FAQ

### Should our unit have a checking account?

Yes. Unit funds should be deposited in a checking account that requires two signatures on every check unless the chartered organization requires other procedures.

### Who is responsible for the finances of the unit?

The unit committee is responsible for the unit's finances, but the assets belong to the chartered organization.

### Should our unit consider insuring our unit equipment?

Yes. It is suggested that your unit insure its equipment. Remember, the chartered organization owns the assets.

### When should our unit submit a BSA Unit Money-Earning Application?

For all unit fundraising. Approval must be given in advance by the chartered organization and the local council. The Unit Money-Earning Application can be found at the Council Service Center or online at: [cpcbsa.org/unitfundraising](http://cpcbsa.org/unitfundraising)

### Is our unit considered tax-exempt by the IRS?

Chartered organizations vary widely in tax status, but the tax status of your unit is the same as that of your chartered organization if the chartered organization includes the unit in its tax status.

### Does our unit need to file annually an electronic postcard 990-N with the IRS?

The BSA national office consulted with outside counsel. In their opinion, most units do not have to file. The only exception is for the very small number of units that have filed for separate federal tax-exempt status under Section 501(c)(3) of the Internal Revenue Code.

### Can our unit be covered under the BSA's group exemption?

No. The IRS only allows local councils (and council trust funds) to be included under the BSA group exemption.

### A volunteer suggested that our unit apply for its own tax-exempt status. Can we?

Units should not incorporate or apply for their own tax-exempt status. Units are not legal entities.

### Can we solicit gifts for our unit?

No. Simply put, units are not permitted to solicit any gifts.

### Does that mean people can't make gifts to our unit?

Anyone can contribute to a Scout pack, troop, or unit—and many donors don't need or care about charitable deductions.

### Can gifts go to the local council to benefit our unit, then "pass through" the council to us?

No. Your unit "belongs" to your chartered organization, not to your local council.

### My local company has employee volunteerism grants. Can these gifts go to our unit?

Employee incentive awards and volunteerism grants usually can NOT go to a unit, due to the company's giving restrictions. Corporate donations often can only go to charities that are "501(c)(3)."

## Safety while fundraising

Include these safety considerations when planning a unit fundraiser (source Guide to Safe Scouting).

1. Money-earning projects should be suited to the ages and abilities of youth participants.
2. Proper adult supervision should be provided.
3. Youth should engage in money-earning projects only in neighborhoods that are safe and familiar and should use the buddy system.
4. Leaders must train youth members to never enter the home of a stranger and to know whom to contact in case of an emergency.
5. Youth participants should be familiar with safe pedestrian practices and participate during daylight hours only.

## Non-Commercialization

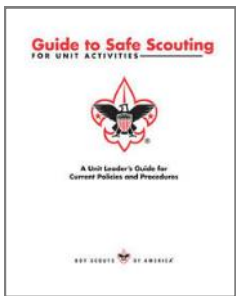
Other than for the council sponsored candy and popcorn sales no Scouter, member, employee, or representative of the Boy Scouts of America, or any local council or unit, is authorized to use any logo, insignia, terms in common usage, or descriptive marks relating to Scouting for any commercial purpose, without the express written authorization of the National Council for the subject use.



# Appendix G.2: How to Keep Scouts Safe

A basic responsibility of every Scouting leader is to ensure safety for all Scouts and Scouters. Boy Scouts of America provides numerous resources to help leaders in planning safe and fun activities. Detailed here are a few key resources. Also use the council's Scouting Safety webpages (<https://cpcbsa.org/tools/insurance-safety/>) as a resource when planning events and activities.

## Planning Safe Activities



### **Guide to Safe Scouting**

Without question, the *Guide to Safe Scouting* is the primary safety planning tool for Scouting leaders—so much

so that every leader is encouraged to always have a current copy available. This valuable tool provides an overview of BSA safety policies, procedures, and guidelines to help leaders plan safe and enjoyable adventures. The policies are established to protect members from known hazards that have been identified through over 100 years of experience. Available as an inexpensive printed booklet, as a free PDF download, and in a handy online format, the guide is updated regularly. It is recommended that all Scouting leaders have and use it whenever planning for events.

**INFO:** <https://www.scouting.org/health-and-safety/gss/>

### **Ages & Activities**

Did you know that there is a chart of activities and appropriate ages for each? It's a great resource to help Scouting leaders plan activities that are appropriate for Scouts in their unit. Find the chart in the *Guide to Safe Scouting* and through a link on the council website.

**INFO:** [www.cpcbsa.org/scoutsafety](http://www.cpcbsa.org/scoutsafety)

### **S.A.F.E Checklist**

Few youth organizations encompass the breadth, volume, and diversity of physical activity common to Scouting, and none enjoy a better safety record. The key to maintaining and improving this exemplary record is the conscientious and trained adult leaders who are attentive to safety concerns. Scouts and their parents

expect all Boy Scouts of America activities to be conducted safely. To ensure the safety of participants, the Boy Scouts of America expects leaders to use the four points of SAFE when delivering the Scouting program. These rules are applicable to all activities.

**INFO:** <https://www.scouting.org/health-and-safety/safe/>

## Insurance Resources

### **Accident and Sickness Coverage for Scouts and Scouting Volunteers**

Thanks to Friends of Scouting funds, Cascade Pacific Council ensures that every Scouting unit has basic Accident & Sickness Insurance through a group policy that covers local packs, troops, crews, and other Scouting units (other than LDS units as they already have Church-provided coverage). This insurance provides secondary coverage when someone is injured during Scouting activities. Description of Coverage and claim forms are available on the council website.

**INFO:** [www.cpcbsa.org/insurance](http://www.cpcbsa.org/insurance)

### **General Liability Insurance for Charter Organizations and Registered Leaders**

The BSA National Council provides **general liability insurance**, giving excess protection for registered volunteer adult leaders and chartering organizations. This insurance program is funded by membership and charter organization fees.

**INFO:** [www.cpcbsa.org/insurance](http://www.cpcbsa.org/insurance)

### **Certificates of Insurance**

When another organization requests a **certificate of insurance**—usually when utilizing others' property or facilities—the certificate can be requested by using a *Certificate of Insurance*

*Request Form* available at the following link:

**INFO:** [www.cpcbsa.org/insurance](http://www.cpcbsa.org/insurance)

## Youth Protection Resources



### **Youth Protection is for Everyone**

The BSA has announced bold, wide-ranging updates to its Youth Protection program as part of an ongoing effort to protect young people from child abuse. The course will take about an hour to complete. It includes cutting-edge research from the top experts in the field of child abuse prevention. It covers topics like bullying, neglect, exposure to violence, physical and emotional abuse, and child sexual abuse. Adults who will be present at a Scouting activity for 72 hours or more must register as volunteers and complete a background check and Youth Protection training. Cascade Pacific Council requires Youth Protection be taken bi-annually.

**INFO:** [www.cpcbsa.org/youthprotection](http://www.cpcbsa.org/youthprotection)

### **Internet Safety with Protect Yourself videos**

To help families and volunteers keep youth safe while online, the BSA introduced the Protect Yourself Adventure videos. The Scouting portal showcasing Protect Yourself resources includes grade-specific videos for each level.

**INFO:** [www.scouting.org/programs/cub-scouts/preview-adventures/protect-yourself-rules/](http://www.scouting.org/programs/cub-scouts/preview-adventures/protect-yourself-rules/)



BARBARA SINATRA  
CHILDREN'S CENTER  
AT EISENHOWER

# Appendix H.1: Where Do We



## Your District Support Team

Your council is organized into many zones called districts. Each district has a team of volunteers ready to support you as a leader or parent. To find your district go online to [www.cpcbsa.org/districtmap](http://www.cpcbsa.org/districtmap). There you can zoom in to the map to find where you live, click that location on the map and you will see your district. From there, select your district and the district web page will come up. Key contacts and local resources are available here.

## Your District Executive

Thanks to donations through Friends of Scouting your council is able to employ an executive to serve your unit in Scouting. Each district has been assigned an executive. By accessing the district above you will be able to locate the name and contact of that executive. Since the District Executive works for your council they may be more accessible than some of your volunteer leaders to answer questions.

## Your District Roundtable

Each month the leaders of the other Scouting units in your "District" gather to learn about how to run the next month's program, share information and resources, be ready to answer questions, and offer a forum to share successes and concerns. Go to your District web page described above and find your roundtable.



## Your Website [www.cpcbsa.org](http://www.cpcbsa.org)

Your council website has important information about resources and events. There are several tabs along the top to help you in addition to a search button.

## Your Council Facebook Page and other Social Media

For those of you who use Facebook, Twitter, Instagram, Flickr, YouTube, LinkedIn and Google+, your council has a presence on each of these social media venues. Here you will get information on upcoming activities, tools, best practices and general articles of interest. You can access each of these venues by scrolling to the bottom of your council's home page [www.cpcbsa.org](http://www.cpcbsa.org).

## Your Council E-news "Compass Points"

Each week your council sends out a newsletter to share our upcoming activities and inform about important resources and issues. Connect to Compass Points by selecting the Blue Square on your council homepage [www.cpcbsa.org/enews](http://www.cpcbsa.org/enews) to get on the list.

## National BSA Website

The national BSA has a website to support you as well. This site is full of general information about how Scouting is operated. You can access this website at [www.Scouting.org](http://www.Scouting.org).

## National BSA Volunteer Help Desk

Sometimes you may have problems with online training, the my.Scouting.org website or with other national resources. The BSA National volunteer help desk is ready to be there for you. They are open from 9am-5pm PST. Phone: 972-580-2489 or [myScouting@myScouting.org](mailto:myScouting@myScouting.org).

## Nor'West Scout Shop

Where you go to buy all your Scouting awards, uniforms, gifts, crafts, books and a whole lot more.

INFO: [www.cpcbsa.org/offices](http://www.cpcbsa.org/offices)

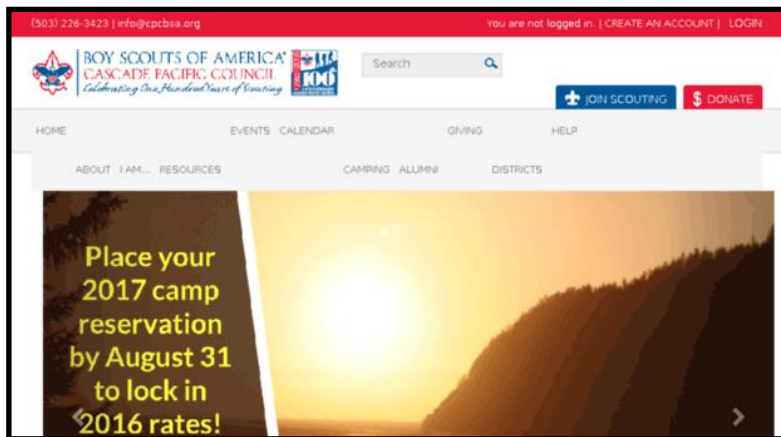


# Appendix H.1: Where Do We Go to For Help



## Online Accounts with Scouting

Several tools have been created that require you to create an online account. Though it can be a challenge maintaining so many accounts. We suggest you keep a single Scout Login for all your accounts and change the password each year to one master password to keep things simpler for you. In some instances the account is for your entire unit and in other cases the account is for a single family. Below is a list of the online resources that require you to set up an account.



## Personal Accounts

**My.Scouting.org** is where you will have access to your personal Scout records and various Scouting tools prepared by the National BSA Support. It is also where you will take many different online trainings. It is important that you attach your specific "Member" or "Person" ID to this account. For instructions on how to do this go to [www.cpcbsa.org/help](http://www.cpcbsa.org/help) to see several short video tools. **You must attach your individual Scouting Personal Member ID to your My.Scouting.org profile for your online trainings to be recorded.** If you don't know your member ID, check with your unit Committee Chairman or you can start a support ticket at [www.cpcbsa.org/help](http://www.cpcbsa.org/help). This

site also has a short video on how to attach your ID to your my.Scouting.org profile.

## Signing your family up for events

Explore our comprehensive guide at [www.cpcbsa.org/tools/event-registration-guide](http://www.cpcbsa.org/tools/event-registration-guide) to discover seamless steps on signing up for enriching Scouting events and securing weekend camping reservations. Access a wealth of resources, including how-to guides and informative videos, to ensure a smooth and enjoyable registration experience.

## Signing your Unit up for events

Secure your unit's ideal camp property or facility by visiting [www.campreservation.com/492/Home](http://www.campreservation.com/492/Home). Discover availability, take virtual photo tours, and seamlessly book reservations for unforgettable unit weekend camping experiences.

## Charter Renewal

Once a year starting October 1<sup>st</sup>, all units are required revalidate their unit through a process called Charter Renewal. This process is done online through Internet Advancement. Typically the Committee Chairman for your unit will take on this task but you may volunteer as well. Find out more about Charter Renewal at [www.cpcbsa.org/charter](http://www.cpcbsa.org/charter)

## Membership Renewal

Each Scout and Adult Volunteer will need to renew and pay membership fees during the month of their registration anniversary.

## Resources and Help

As a volunteer you will have many questions. There are resources available day or night. Your ability to get the answers you need in a timely fashion will make your role as a volunteer leader more enjoyable. Listed below are the many various places you can go to get your questions answered.



**Prepared. For Life.™**

# Appendix I: Council Calendar

## September 2024 [www.cpcbsa.org/events](http://www.cpcbsa.org/events)

### Monthly Theme

Pack Meeting Theme: Trustworthy

Trustworthy: /'trəs(t),wərTHē/ : able to be relied on as honest or truthful.

### September Key Priorities:

- Attend Roundtable
- Leader training
- Report service hours online
- Troops sign up for 2025 Summer camp
- Conduct Fall Recruitment
- Take Youth Protection Training
- Prepare for Charter Renewal
- Sell Popcorn
- Solve Beach & Riverside Cleanup



SUNDAY	MONDAY	TUESDAY	WEDNESDAY	THURSDAY	FRIDAY	SATURDAY
1	2 <b>LABOR DAY</b>	3	4	5	6	7
8	9	10	11	12 <b>ROUNDTABLE</b>	13 <b>SANTIAM RIVER WE- BELOS WOODS</b>	14
15 <b>SANTIAM RIVER WE- BELOS WOODS</b>	16	17	18	19	20	21
	<b>FALL CUB SCOUT JOIN NIGHTS</b>					
22	23	24	25	26	27 <b>SPIRIT LAKE BIGFOOT SEARCH</b>	28
	<b>FALL CUB SCOUT JOIN NIGHTS</b>					
29	30	OCTOBER	2	3	4	5
<b>SPIRIT LAKE BIG- FOOT SEARCH</b>		1			<b>RIVERS EDGE WEBELOS WOODS</b>	

# October 2024 [www.cpcbsa.org/events](http://www.cpcbsa.org/events)

## Monthly Theme

**Pack Meeting Theme:** Loyal

**Loyal:** /'loi(ə)l/ : giving or showing firm and constant support or allegiance to a person or institution.

### October Key Priorities:

- Attend Roundtable
- Attend Leader training online
- Complete Recruitment
- Sign up for Winter Lodge Snow Day
- Sign up for University of Scouting
- Collect Fees for Charter Renewal
- Sign up for Weekend Horse Ride
- Plan date for den to attend 2025 camp
- Sell Popcorn



SUNDAY	MONDAY	TUESDAY	WEDNESDAY	THURSDAY	FRIDAY	SATURDAY
		1	2	3	4	5
					RIVERS EDGE WEBELOS WOODS	
6	7	8	9	10	11	12
RIVERS EDGE WEBELOS WOODS				ROUNDTABLE		
13	14	15	16	17	18	19
					PACIFIC TRAIL WEBELOS WOODS	
					TIMBERLINE WEBELOS WOODS	
20	21	22	23	24	25	26
PACIFIC TRAIL WEBELOS WOODS						HAUNTED TRAILS @ BUTTE CREEK
TIMBERLINE WEBELOS WOODS						
27	28	29	30	31	NOVEMBER	2
				HALLOWEEN	1	UNIVERSITY OF SCOUTING

# November 2024 [www.cpcbsa.org/events](http://www.cpcbsa.org/events)

## Monthly Theme

Pack Meeting Theme: Helpful

Helpful: /'helpfəl/ : giving or ready to give help.

### November Key Priorities:

- Attend Roundtable
- Attend University of Scouting
- Attend Leader training
- All units sign up for 2025 Summer camp
- Complete Charter Renewal
- Sign up for Winter Lodge Snow Day
- Prepare for Camp4all campaign
- Complete Charter Renewal
- Sign up for Weekend Horse Ride



SUNDAY	MONDAY	TUESDAY	WEDNESDAY	THURSDAY	FRIDAY	SATURDAY
					1	2
						UNIVERSITY OF SCOUTING
3	4	5	6	7	8	9
		ELECTION DAY				
10	11	12	13	14	15	16
	VETERANS DAY			ROUNDTABLE		
17	18	19	20	21	22	23
24	25	26	27	28	29	30
				THANKSGIVING		

# December 2024 [www.cpcbsa.org/events](http://www.cpcbsa.org/events)

## Monthly Theme

**Pack Meeting Theme:** Friendly

**Friendly:** /'fren(d)lē/ : kind and pleasant.

### December Key Priorities:

- Attend Roundtable
- Leader training
- All units sign up for 2025 Summer camp
- Turn in new youth applications now
- Sign up for Winter Lodge Snow Day
- Prepare for Blue and Gold
- Complete Charter Renewal
- Sign up for Weekend Horse Ride
- Recruit Spring Sale Chair



SUNDAY	MONDAY	TUESDAY	WEDNESDAY	THURSDAY	FRIDAY	SATURDAY
1	2	3	4	5	6	7 SPIRIT LAKE WALK & KNOCK
8	9	10	11	12 ROUNDTABLE	13	14
15	16	17	18	19	20	21
22	23	24 CHRISTMAS EVE	25 CHRISTMAS DAY	26	27	28
29	30 NEW YEAR'S EVE	31	JANUARY 1 NEW YEAR'S DAY	2	3	4



# January 2025 [www.cpcbsa.org/events](http://www.cpcbsa.org/events)

## Monthly Theme

**Pack Meeting Theme:** Courteous

**Courteous:** /'kərdēəs/ : polite, respectful, or considerate in manner.

### January Key Priorities:

- Attend Roundtable
- Leader training
- Conduct a Camp4All Presentation
- Attend Spring Product Sale Training
- Plan a Scouting Anniversary program
- Sign up for Weekend Horse Ride
- Collect funds for March 1st camp payment deadline
- Prepare for Scouting For Food.
- Sign up for Cub Scout Super weekend



SUNDAY	MONDAY	TUESDAY	WEDNESDAY	THURSDAY	FRIDAY	SATURDAY
			1	2	3	4
	NEW YEAR'S EVE					
			NEW YEAR'S DAY			
5	6	7	8	9	10	11
				ROUNDTABLE		
12	13	14	15	16	17	18
19	20	21	22	23	24	25
	MARTIN LUTHER KING DAY					
26	27	28	29	30	31	FEBRUARY
						1

# February 2025 [www.cpcbasa.org/events](http://www.cpcbasa.org/events)

## Monthly Theme

**Pack Meeting Theme:** Kind

**Kind:** /kīnd/ : having or showing a tender and considerate and helpful nature.

### February Key Priorities:

- Attend Roundtable
- Leader training
- Conduct a Camp4All Presentation presentation
- Sign up for 2025 Summer Camp
- Collect funds for March 1st camp payment deadline
- Conduct an OA election (Troops)
- Plan Spring joining activity
- Attend Spring product sale training at February Roundtable
- Conduct a Scouting Anniversary program



SUNDAY MONDAY TUESDAY WEDNESDAY THURSDAY FRIDAY SATURDAY

1

2

3

4

5

6

7

8

GROUNDHOG DAY

SCOUTING ANNIVERSARY WEEK

9

10

11

12

13

14

15

ROUNDTABLE

VALENTINE'S DAY

16

17

18

19

20

21

22

PRESIDENTS' DAY

23

24

25

26

27

28

MARCH

1

SCOUTING FOR FOOD

# March 2025 [www.cpcbsa.org/events](http://www.cpcbsa.org/events)

## Monthly Theme

**Pack Meeting Theme:** Obedient

**Obedient:** /ə'bedēənt,ō'bedēənt/ : following the rules of family, school, and troop.  
Obey the laws of community and country.

### March Key Priorities:

- Attend Roundtable
- Leader training
- Complete Camp4all
- Sign up for 2025 Summer Camp
- Plan Crossover Program



SUNDAY	MONDAY	TUESDAY	WEDNESDAY	THURSDAY	FRIDAY	SATURDAY
						1 SCOUTING FOR FOOD
2	3	4	5	6	7	8
9	10	11	12	13 ROUNDTABLE	14	15
16	17 ST PATRICK'S DAY	18	19	20	21	22
23		25	26	27	28	MARCH 1

# April 2025 [www.cpcbsa.org/events](http://www.cpcbsa.org/events)

## Monthly Theme

Pack Meeting Theme: Cheerful

Cheerful: /'CHɪrfəl/ : noticeably happy and optimistic.

### April Key Priorities:

- Attend Roundtable
- Leader training
- Sign up for 2025 Summer Camp
- Plan Spring joining activity
- Recruit a Popcorn Chair
- Pay your Camp fees by May 1st
- Participate in a SOLVE event for Earth Day



SUNDAY	MONDAY	TUESDAY	WEDNESDAY	THURSDAY	FRIDAY	SATURDAY
		1	2	3	4	5
6	7	8	9	10 ROUNDTABLE	11	12
13	14	15 TAX DAY	16	17	18 GOOD FRIDAY	19
20 EASTER DAY	21	22	23	24	25	26
27	28	29	30	MAY 1	2	3

# May 2025 [www.cpcbsa.org/events](http://www.cpcbsa.org/events)

## Monthly Theme

Pack Meeting Theme: Thrifty

**Thrifty:** /'Thriftē/ : using resources carefully and not wastefully.

### May Key Priorities:

- Attend Roundtable
- Leader training
- **Conduct a Friends of Scouting** presentation
- Sign up for 2025 Summer Camp
- Plan Spring joining activity
- Recruit a Popcorn Sales Chair
- Pay your Camp fees by May 1st
- Secure a date for Fall recruitment



SUNDAY MONDAY TUESDAY WEDNESDAY THURSDAY FRIDAY SATURDAY

1

2

3

4

5

6

7

8

9

10

ROUNDTABLE

11

12

13

14

15

16

17

MOTHER'S DAY

18

19

20

21

22

23

24

25

26

27

28

29

30

31

MEMORIAL DAY

# June 2025 [www.cpcbsa.org/events](http://www.cpcbsa.org/events)

## Monthly Theme

**Pack Meeting Theme:** Brave

**Brave:** /brāv/ : having or showing courage.

### June Key Priorities:

- Attend Roundtable
- Leader training
- Set a planning date for your annual Pack Program planning conference

- Recruit a Popcorn Sales Chair and sign up online at [cpcbsa.org/popcorn](http://cpcbsa.org/popcorn)
- Adjust Camp numbers at least two-weeks prior to arrival
- Plan your Fall recruitment campaign



SUNDAY	MONDAY	TUESDAY	WEDNESDAY	THURSDAY	FRIDAY	SATURDAY
1	2	3	4	5	6	7
8	9	10	11	12 ROUNDTABLE	13	14 FLAG DAY
15 FATHER'S DAY	16	17	18	19 JUNETEENTH	20	21
22	23	24	25	26	27	28
29	30	JULY 1	2	3	4	5 INDEPENDENCE DAY

# July 2025 [www.cpcbsa.org/events](http://www.cpcbsa.org/events)

## Monthly Theme

**Pack Meeting Theme:** Clean

**Clean:** /klēn/ : keeping body and mind fit and clean. Choosing the company of those who live by high standards. Keeping home and community clean.

### July Key Priorities:

- Attend Roundtable
- Leader training
- Complete Annual Plan
- Recruit a Popcorn Sales Chair and sign up.
- Adjust Camp numbers at least two-weeks prior to arrival
- Plan your Fall recruitment campaign
- Review Summertime Camping Award



SUNDAY	MONDAY	TUESDAY	WEDNESDAY	THURSDAY	FRIDAY	SATURDAY
		1	2	3	4	5
6	7	8	9	10	11	12
BUTTE CREEK SESSION 1				ROUNDTABLE		
13	14	15	16	17	18	19
20	21	22	23	24	25	26
27	28	29	30	31	AUGUST	2
					1	

# August 2025 [www.cpcbsa.org/events](http://www.cpcbsa.org/events)

## Monthly Theme

Pack Meeting Theme: Reverent

Reverent: /'rev(ə)rənt/ : feeling or showing deep and solemn respect.

### August Key Priorities:

- Attend Roundtable
- Leader training
- Sign up for Fall Little Buckaroo Horse Experience
- Complete Annual Planning
- Attend Popcorn Training
- Sell Popcorn
- Plan a Fall Joining event
- Update unit BeAScout Pin so those interested know how to find you



SUNDAY	MONDAY	TUESDAY	WEDNESDAY	THURSDAY	FRIDAY	SATURDAY
					1	2
3	4	5	6	7	8	9
10	11	12	13	14 ROUNDTABLE	15	16
17	18	19	20	21	22	23
24	25	26	27	28	29	30





# PLAN YOUR IDEAL YEAR OF SCOUTING



Everything you need to make Scouting Fun and exciting during 2024-2025.



Program Workbook: Earn a special Pack flag ribbon for completing this process by Aug 31, 2024.

**Scouting America**  
Cascade Pacific Council

Want to learn more? Contact us!  
<https://cpcbsa.org/Planning>