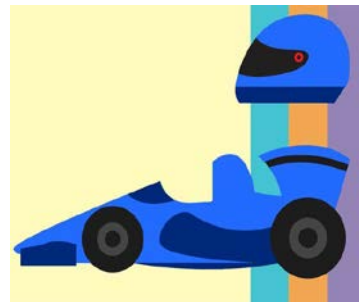


## 2019 Wayne Trace District Pinewood Derby Race

Saturday - April 6, 2019

Weigh-in Time: 9:00-9:30am

Race Start Time: 10:00am (will race by rank starting with Lions and ending with Webelos; last race will be for anyone)



Location: Trinity Lutheran Church, 511 N. Commerce St., Lewisburg, OH  
Cost: \$5.00 (Pre-registration Online through 4/2/19) / \$10.00 (day of the race)

The Cub Scouts will race by rank, i.e. Lion, Tiger, Wolf, Bear, and Webelos/Arrow of Light. Arrow of Light Scouts that crossed over to a Troop since December 2018 can race their car with the other Webelos. **The top two racers by rank from each Pack's pinewood derby are eligible to race.** There will be a final race for anyone to participate.

**All cars must pass inspection to qualify for the race.** The inspection points are as follows:

- A. The Scouts can race any car they have built – current or previous year. Please let the boys do as much work on the car as possible, they learn more this way. Leaders do not need to collect cars after the Pack's race; Scouts will bring their own.
- B. Width - overall width shall not exceed 2.75" (2-3/4 inches).
- C. Length - overall length shall not exceed 7 inches. (Note: check your length; cars out of the box are sometimes over 7 inches.)
- D. Height - overall height shall not exceed 3.5 (3-1/2) inches. (Note: the starting gate on the track is the reason for this limit. You can exceed this limit for judging, if the item can be removed when racing.)
- E. Weight - Shall not exceed 5 ounces.
- F. Wheel bearings, washers, bushings or hubcaps are prohibited.
- G. No solid axles, only the official Grand Prix Pinewood Derby kits with nails for axles can be used. **Wheel base can't exceed 4.75" (4-3/4 inches) Center to Center of axle.**
- H. The car shall not ride on any kind of springs.
- I. Dry Lubricant only. **No Liquid Lubricant allowed.**
- J. Wheels can be sanded to remove surface imperfections, but the treads must be left flat. Wheels can't be any smaller than 1.170" diameter. You can't remove any significant amount of plastic - inside or outside of wheel. Only the official wheels supplied with the Grand Prix kit are acceptable. Car with modified wheels will be disqualified to run. No hubcaps of any sort are allowed. The attached pictures show a sample of acceptable and unacceptable type wheels and old vs. new wheels.
- K. Must have a .375" (3/8 inch) clearance under the car body. Low hanging weights must be moved to another part of the car or recess into the bottom of the car to pass the .375" clearance.
- L. Any details added must be within length, width, and weight limits.
- M. No loose materials of any kind are allowed on the car. If anything falls off during or after a race, it stays off.
- N. Scouts must be present to race.

If you have any questions please call or email:

Lori Metivier - 937-602-9856 (cell); E-mail: lori.metivier@wright.edu



MIAMI VALLEY COUNCIL  
BOY SCOUTS OF AMERICA