

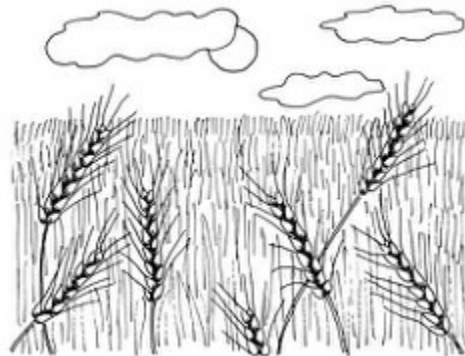
**SCOUTSWARTS
ACADEMY**



**SCOUTERS
OF THE
LOST GOLDEN
KNOT**



LITTLE PACK ON



THE PRAIRIE

2019 FRONTIER TRAILS CUB SCOUT DAY CAMPS - CENTRAL

**Scoutswarts Academy – July 27
Scouters of the Lost Golden Knot – August 17
Little Pack on the Prairie – October 5&6**

Register for 1, 2 or all 3 !

Online Pre-registration is required.

Frontier Trails Central Day Camps

Scoutwatts Academy

WHEN: July 27 - Saturday

WHERE: General Sibley Park
5001 South Washington Street – Bismarck 58504

TIME: 8-9 Check In
9-5 Activities
5 Check Out

COST: \$35 By July 13 / \$40 After July 13

REGISTER: <https://scoutingevent.com/429-27059>

Scouters of the Lost Golden Knot

WHEN: August 17 – Saturday

WHERE: McDowell Dam
1951 93 St NE – Bismarck - 58504

TIME: 8-9 Check In
9-4:45 Activities
4:45 Egg Drop
5 Check Out

COST: \$35 By August 3 / \$40 After August 3

REGISTER: <https://scoutingevent.com/429-27060>

Little Pack on the Prairie

WHEN: October 5-6 – Saturday/Sunday (parent required if camping overnight)

WHERE: Eagles Park
10900 Hwy 1804 – Bismarck 58503

TIME: 8-9 Check In (parents staying overnight may set up camp)
9-5 Activities
5-5:30 Check Out/Check In/Set Up Camp
5:30 Family Dinner
7:45 Campfire Program
10 Lights Out
8 AM Sun Breakfast/Break Camp/Check Out

COST: \$35 By September 21 / \$40 After September 21

REGISTER: <https://scoutingevent.com/429-27061>

OPTIONAL OVERNIGHTER: Families staying overnight must supply their own camping gear (tent, sleeping bag/pillow, change of clothes, flashlight...)
Be prepared for cooler weather.
Scouts must have a parent present (no exceptions).

REGISTRATION INFO NEEDED: Family Dinner – How many people will be staying for dinner?
Overnight – Is scout staying overnight with family member?

Capital Credit Union Scout Center – 3320 Hamilton St #1 – Bismarck ND 58503 701-223-7204 bismarck@nlcbsa.org

General Information **ALL adults will be station leaders/walking den leaders.**

- 3 page medical form is attached & **must be completed by all youth & adults attending camp.** Return to your pack/Scout Center before camp starts (can also be scanned & emailed)
- Lunch, snacks & water provided.
- **Online pre-registration is required.** Follow the “Register” link provided for each day camp.

Day Camp in A Nutshell

Tigers, Wolves, Bears, Webelos, Arrow of Light Scouts

Cub Scout Day Camp is a Camping program for Tigers, Wolves, Bears, Webelos & Arrow of Light Scouts.

Scouts will arrive at camp with their Pack for a day full of activities, such as crafts, nature, sports and games, BB guns and archery.

The camp provides all program materials needed to complete and perform each activity. Also included in the fee are a camp patch and T-shirt.

Scouts will receive a list of advancements earned at the end of camp!

Please carpool as a group if possible. Units **MUST** have 1 adult leader for every 5 boys attending camp. **ALL** adults will be used as station leaders or Walking Den Leaders while at Day Camp.

Pack Responsibilities

Each Pack is asked to select a Day Camp Coordinator. This person handles promotion, registration, coordinates transportation and recruits adults to provide leadership at Day Camp.

In order to ensure good attendance, each Pack needs to promote Day Camp at a Pack meeting. If needed, district Day Camp staff can make a presentation to your Pack.

Action Items

- ❖ Select Day Camp Coordinator.
- ❖ Collect sign ups, health forms and fees. Register online.
- ❖ Recruit parents to serve as leaders at Day Camp and as drivers to and from camp.
- ❖ **Health Forms are required for each Cub Scout and Adult.** Once completed, they must be turned in to the Bismarck Scout Center before camp starts. This is not a physical, just a health history (Part A & B).
- ❖ Every day, at check-in and check-out time, each youth will need to be signed in and out by his parent/guardian. Make sure "Adults Authorized to Take Youth To And From Events" on Part A of the medical form is filled in.
- ❖ Any person visiting camp will need to check in and out at the visitor's desk and wear the "Visitor Stamp" on a visible part of their clothing.

Medications

The Health Officer at Day Camp will administer only medications prescribed by a doctor. All medications must be in their original container and properly labeled.

The "Personnel Health and Medical Record" must specify any medications, the dosage and be signed by the scout's parents or guardians.

Sunscreen should be used daily. Leaders may apply aerosol sunscreen. Sunscreen cream should only be applied to a Scout by a Scout or by a parent or guardian.

Buddy System

The Buddy System is a simple technique in assuring scout safety. Another scout must accompany any scout that must be separated from their den. This includes, but is not limited to, trips to the restrooms, running errands, going to Headquarters and seeking medical attention. No youth should ever go anywhere alone.

Dress Code

All staff and campers will wear the official Camp Staff shirt for ease of identification. All staff and campers must wear closed-toe shoes. No sandals, flip-flops or any other types of shoes that don't enclose the toes will be allowed and campers may be asked to leave camp until they have the proper footwear. Dress comfortably and sensibly for the anticipated weather.

Items to bring

A water bottle labeled with name. Cups will NOT be provided.

Poncho for wet weather.

Any required medications. All medications must be in their original container and properly labeled. (These will be stored at Camp HQ)

Sunscreen (Should be applied prior to arrival)

Hat

Items not to bring

Portable electronic equipment, including such things as iPod/iPad, MP3 Players, radios, etc. Playing or trading cards of any type

Cell phones will only be used by staff members for emergency's

BB guns or bows (These will be provided for your use)

Knives

Walking Den Leaders (adults attending camp with their scout)

All Den Leaders shall:

Be concerned for camper safety.

Assist and supervise the scouts in the Den. Give positive encouragement.

Be responsible for the conduct and safety of scouts when moving from session to session and during lunch.

Ensure all camp notes, crafts and Scout's personal items are sent home with them.

Assist in program areas as needed so scouts make the most of their opportunities.

Teach good cheer and self-respect.

EGG DROP RULES

(only at “Scouters of the Lost Golden Knot” August Day Camp)

Here is a family project: Pack a single, raw, hen’s egg so well that when it is dropped from the bucket of a truck, it will not break. Please abide by the following rules, so that it is fair to all:

1. You must use a raw chicken egg. It cannot be cooked or frozen. Eggs that do not break will be checked to be sure they are raw.
2. You may use some type of suspension system, as long as it is not fused onto the egg - or you may just pack the egg in some type of packing; jello, popcorn, crushed newspaper, plastic peanuts, etc. The egg cannot be coated with any type of material, such as a chemical, rubber latex or cement. **NO PARACHUTES!!**
3. The overall size of your container may not be more than 6”x6”x6”. **ALL BOXES WILL BE MEASURED AND THOSE TOO LARGE WILL NOT BE DROPPED.**
4. Put your full name and pack number on the outside of the box.
5. You must stay away from the truck - there will be barriers that you must stay behind during the drop.
6. Once the boxes have been dropped, you will be able to retrieve the box/stuffing if needed.
7. A judging team will be on hand to check boxes after the drop and determine the winners.
8. **GOOD LUCK!!**

