



BOY SCOUTS OF AMERICA®  
NORTHERN LIGHTS COUNCIL



**2024 CUB SCOUT ADVENTURE CAMP**  
**LEADERS GUIDE**  
**BUTLER WILDERNESS OUTPOST**

# TABLE OF CONTENTS

<b>Welcome Letter .....</b>	<b>3</b>
<b>Schedule .....</b>	<b>4</b>
<b>Planning for Camp .....</b>	<b>5</b>
• Checklist	
• The Day You Leave	
• Getting Scouts Excited	
• Informing Parents	
• How to Register	
• Refund Policy	
• Financial Assistance	
• Advancement in Camp	
<b>Packing List .....</b>	<b>8</b>
<b>Arrival and Departure .....</b>	<b>9</b>
• Forms to Bring	
• Check-In Day Procedures	
• Check-out and Final Payment Process	
<b>Health and Safety .....</b>	<b>10</b>
• Health Forms	
• Medications	
• Medical Staff	
<b>Camp Accomodations .....</b>	<b>11</b>
• Trading Post	
• Laundry Service	
• Meal Service	
• Shower and Toilet Facilities	
• Tent Camping	
<b>Program .....</b>	<b>12</b>
• Camp Theme	
• Fishing and Nature	
• Shooting Sports	
• Waterfront	
<b>Camp Map and Directions .....</b>	<b>13</b>



# WELCOME!

## Greetings from Adventures on the High Sea Camp!

We are extremely excited about the 2024 camping season and hope you and your Scouts are too!

Cub Scouts of all ages are invited to join us in the sea themed summer camp. Nestled in the Heart of the Paul Bunyan State Forest in Central Minnesota, Butler Wilderness Outpost offers families opportunities to enjoy the outdoors, featuring tent, cabin, and limited RV camping. The camp has modern bathroom and shower facilities along with warm delicious meals in the Dining Hall. Cub Adventure Camp provides numerous activities for Cub Scouts including archery, swimming, crafts, fishing, boating and more. Come experience adventure, advancement and achievement while enjoying time with friends and family!

**NEW for 2024!** Adventures on the High Sea: Each Cub Scout will have the opportunity to build and design their own Raingutter Regatta Boat. There will be a tournament on Theme Night along with games and activities.

You can sign up anytime on our website at [nlcbsa.org/adventurecamp](https://nlcbsa.org/adventurecamp). We continue to make frequent updates to our website as well as our Facebook and Instagram pages in preparation not only for Cub Adventure Camp, but all our year-round programs.

If you have any questions about Cub Adventure Camp, our summer programs, or year-round programs, please feel free to contact us at the Fargo Center for Scouting. We look forward to seeing you and your Scouts on the trails of camp!

Yours in Scouting,

*Missy Hendrickx*

**Missy Hendrickx**

Northern Lights Council Program Director  
Cell: 218.252.8706 | Email: [missy.hendrickx@scouting.org](mailto:missy.hendrickx@scouting.org)



DAY 1		
1:00 PM	3:00 PM	Check-in
5:10 PM		Flag Ceremony
5:20 PM	6:30 PM	Dinner
6:45 PM	7:15 PM	Adult Leader Meeting
6:45 PM	7:30 PM	Scout Meeting & Boat Making
7:45 PM		Gather for Campfire
8:00 PM	8:45 PM	Opening Campfire
10:00 PM		Lights Out
DAY 2		
6:30 AM	7:00 AM	Polar Bear Plunge
7:00 AM	8:00 AM	Breakfast
8:00 AM		Flag Ceremony
8:10 AM		Meet with Village Guide
8:15 AM	9:45 AM	1st Rotation
10:00 AM	11:30 AM	2nd Rotation
11:45 AM		Lunch
12:30 PM		Quiet/Personal Time
1:10 PM		Meet with Village Guide
1:15 PM	2:45 PM	3rd Rotation
3:00 PM	5:00 PM	Open Time
5:10 PM		Flag Ceremony
5:20 PM		Dinner
6:30 PM	8:30 PM	Theme Night
10:00 PM		Lights Out
DAY 3		
7:00 AM	8:00 AM	Breakfast
8:00 AM		Flag Ceremony
8:10 AM		Meet with Village Guide
8:15 AM	9:45 AM	4th Rotation
10:00 AM	11:30 AM	5th Rotation
11:45 AM		Lunch
12:30 PM		Quiet/Personal Time
1:00 PM		Chapel
1:30 PM	2:30 PM	Whittling Chit
1:30 PM	5:00 PM	Open Time
5:10 PM		Flag Ceremony
5:20 PM		Dinner
6:30 PM	7:00 PM	Closing Campfire
7:30 PM		Movie Night
7:00 PM	8:00 PM	Optional Early Check-out
10:00 PM		Lights Out
DAY 4		
7:00 AM		Flag Ceremony
7:05 AM	8:30 AM	Continental Breakfast
7:00 AM	9:00 AM	Check-out

# SCHEDULE

## ARRIVAL

Check-in is between 1:00 and 3:00 PM. Check your email for your assigned arrival time.

## CAMPFIRE

Opening Campfire is put on by the Butler Wilderness Outpost staff. Closing Campfire is put on by packs, start practicing your skits now. Theme costumes are highly encouraged!

## ROTATIONS

During rotations, Cub Scouts will be broken up by rank to work on advancements. At the end of your stay, each Cub Scout will receive a Rank Advancement Form that shows what they accomplished at camp.

## OPEN PROGRAM TIME

Program areas, such as fishing, waterfront, and shooting sports will be open for anyone to enjoy!

## FLAG CEREMONIES

Cub Scouts and leaders are encouraged to bring and wear uniforms to all flag ceremonies. Cub Scouts will have the opportunity to help a staff member raise, lower and fold the flag.

## CHECK OUT

Optional early check-out is available for those units want to leave a little early. Prior to your check-out, find a Camp administration team member to go through the check-out process with you.



# PLANNING FOR CAMP

## PLANNING CHECKLIST

- **Register** your pack
- **Read** the Leader's Guide
- **Recruit** your adult leadership
  - Remember that both leaders must be 21 years of age and a female leader must accompany any female Scouts!



## NOW

- Sign-up online at [nlcbsa.org/adventurecamp](https://nlcbsa.org/adventurecamp) for your spot. Space is limited, so sign up early!
- Recruit a volunteer Pack Camp Coordinator

## APRIL

- **April 1:** Campership applications are due online
- Have a parent information night to inform parents about summer camp opportunities and pack goals, including:
  - Completed health forms
  - Camp address
  - Things to pack
- **April 12:** Early Bird payment is due in full for each Scout and adult.

## MAY

- Confirm the following with your pack:
  - Secure adequate leadership
  - Plan transportation

## JUNE/JULY

- Does your pack have adequate leadership?
- Has each Scout, sibling, and adult completed a health form?
- Have all fees been paid online?
- Do parents have info on leave/return times and your phone number?
- Does everyone have the necessary equipment (including **rain gear**)?
- Is every Scout officially registered in your unit?

## THE DAY YOU LEAVE

- Have adequate money to pay any unpaid fees
- Bring along a copy of each Scout's and adult's health history form
- Have accurate directions to camp.
- Depart so your unit will arrive during the check-in times
- Be prepared to take the **swim check**



## GETTING SCOUTS EXCITED FOR CAMP

Promotional information should be shared with Scouts, leaders, and parents in your troop. This can be accomplished in many ways. Some ideas for promotion include, but are not limited to:

- Handout information sheets to Scouts' parents
- Show photos or videos of previous summer camps at meetings
- Invite Scouts to share their favorite parts of camp to the younger Scouts
- Invite former and current staff members to visit your troop to talk about camp
- Request a formal camp presentation from camp leadership

## INFORMING PARENTS

Holding an informational meeting for parents before camp is a great way to put parents at ease. This can be done during an already scheduled meeting or as a stand-alone meeting. Some topics you could cover include:

- Travel Information
- What to Bring and What Not to Bring
- Camp Schedule
- How to Reach us at Camp
- Medications
- Extra Expenses

## HOW TO REGISTER

Packs are encouraged to register as a unit by coordinating through a Camping Coordinator. Reservations can be made online at [nlcbsa.org/adventurecamp](http://nlcbsa.org/adventurecamp). You can log back in to make payments or adjustments to your roster at any time after you make your reservation.



## REFUND POLICY

Staffing levels, food and program supplies are purchased in advance based upon the projected numbers registered for camp. Below is the refund policy for Cub Scout Adventure Camp.



- There is a **\$50** non-refundable fee for a Scout that cancels
- There is a **\$25** non-refundable fee for an adult or sibling that cancels
- For any cancellations at least **30 days prior** to arrival date, we will refund all payment minus the non-refundable fee
- For any cancellations less than **15 days prior** to the arrival date there will be **no refunds** at all

## FINANCIAL ASSISTANCE

Camperships are assistance for Northern Lights Council Scouts who would otherwise be financially unable to attend summer camp. Camperships are available for up to **one half** of the total camp fee.

The campership may only be used to attend Northern Lights Council Summer Camps. Financial need must be demonstrated before a campership is awarded. If you are out-of-council, check with your council to see what assistance might be available. Only online applications received by **April 1** will receive priority. If a Scout is in need of a campership after this date, please send a message to Missy Hendrickx at [missy.hendrickx@scouting.org](mailto:missy.hendrickx@scouting.org) and we will see what can be done.

## ADVANCEMENT IN CAMP

 TIGERS	 WOLVES	 BEARS	 WEBELOS	 ARROW OF LIGHT
Tigers in the Water	Paws of Skill	Champions of Nature	Shooting Sports	Fishing
Fish On	Paws for Water	Balancing Bears	Earth Rocks!	Shooting Sports
Shooting Sports	A Wolf goes Fishing	Bears Afloat	Paddle Onward	Into the Wild
Sky is the Limit	Shooting Sports	A Bear Goes Fishing	Art Explosion	Into the Woods
Tiger Tag	Finding Your Way	Shooting Sports	Catch the Big One	Paddle Craft

# PACKING LIST

- |  |   |
|--|---|
| <input type="checkbox"/> Backpack/pencils/pens                                 | <input type="checkbox"/> * Pocket knife (see below)                     |
| <input type="checkbox"/> Camp chair  | <input type="checkbox"/> Rain gear                                      |
| <input type="checkbox"/> Change of clothes for 3 days                          | <input type="checkbox"/> Shower and/or beach towel                      |
| <input type="checkbox"/> Costume/theme-related clothing                        | <input type="checkbox"/> Sleeping bag, blanket, and pillow              |
| <input type="checkbox"/> Cub Scout handbook                                    | <input type="checkbox"/> Spending money for trading post                |
| <input type="checkbox"/> Cub Scout uniform                                     | <input type="checkbox"/> Sunscreen and bug spray                        |
| <input type="checkbox"/> First aid kit   | <input type="checkbox"/> Sweatshirt or jacket                           |
| <input type="checkbox"/> Flashlight (with extra batteries)                     | <input type="checkbox"/> Swim suit (needed for swim tests upon arrival) |
| <input type="checkbox"/> Flip flops or crocs (waterfront & showers)            | <input type="checkbox"/> Tent and camping equipment                     |
| <input type="checkbox"/> Sleeping pad  | <input type="checkbox"/> Water bottle                                   |
| <input type="checkbox"/> Hygiene kit (soap, toothbrush, toothpaste, comb, etc) |   |

- It is the policy of the Northern Lights Council that personal knives at any camping property must have **no longer than a 3-inch blade**.
- Only Bears, Webelos, and Arrow of Light Scouts can carry their knife on them and only after earning their Whittling Chip (earned at camp).
- Tigers and Wolves may only use pocket knives under strict adult supervision.

## WHAT IS PROVIDED?

We will provide access to drinking water, picnic tables, and a pavillion. We will also have access to latrines and showers. Packs are expected to bring their own tents, camping gear, and other personal supplies.



# ARRIVAL AND DEPARTURE

## FORMS TO BRING

It is important to remember to bring all the necessary forms for the members of your troop. It can be difficult to keep track of everything that is necessary. To help, please plan on the following:

- Health Forms (Parts A and B) for all participants
- Printed pack roster of those **ATTENDING** camp
- Swim Classification Form (if completed before arriving at camp)

## CHECK IN DAY AND PROCEDURES

Please check your email prior to your arrival, you will be scheduled a time to arrive. If you are not traveling as a pack, please find a meeting location prior to your arrival, and enter camp together as a pack.

Check-in times for Packs begin at **1:00 PM and end at 3:00 PM**. If you will not be able to check-in at your assigned time, please notify us in advance.

The first stop during check-in will be at the Andrew Nelson Welcome Center on the main road coming into camp. Please have your main leader check-in with the camp staff and have your health forms ready. After checking in at the Welcome Center, your whole pack will go to their campsite. A staff member will meet you there to go through the rest of the check-in.

The final stop during check-in will be at the waterfront. Make sure you pack your swim gear so it's readily accessible without unpacking your entire vehicle. If your Pack completed the swim test before camp, you are still required to visit the waterfront for the safety speech. If you need to complete or retake the swim test, you can do so at this time. Once you have completed this portion of check-in, you can head to your campsite.

## CHECKOUT AND FINAL PAYMENT PROCESS

Unit leaders will have the opportunity to schedule an appointment with the Camp Director to settle any outstanding registration fees or begin the refund process if the pack overpaid. This must be completed before the pack leaves.

Before leaving, a unit leader must check-out with a member of the administration team. After making sure your campsite is clean, they will then give you patches, health forms, and any other paperwork. If your pack plans to leave early on the third night of the camp, please let the Camp Director know.

# HEALTH AND SAFETY

## HEALTH FORMS

Every youth and adult must bring parts A and B of their Health Form to camp. This must be completed prior to your arrival.

## PRESCRIPTION MEDICATIONS

Prescription drugs must be under the control of a responsible adult and stored in a secured manner (locked box, locked vehicle, etc.). The only exception is for emergency medications such as epi-pens, rescue inhalers, and nitroglycerin. All medications must be in their original container with clearly marked labeling.

Pack leaders are encouraged to store and manage the medications for their troop. Our health officer can assist if necessary. Locked storage, including refrigeration, is available for medications.

## MEDICAL STAFF

A qualified health officer is available to deal with minor injuries that may occur during your stay at camp. In the event of a serious injury, arrangements have been made with the local hospital and clinic to provide needed medical care.

The camp's medical officer is available 24 hours a day for emergency medical services. Please make arrangements with the health officer for any daily medical needs.



# CAMP SERVICES



## TRADING POST

The Camp Trading Post stocks a wide variety of Camp memorabilia, Scouting literature and supplies, sundries, program supplies, and refreshments such as ice cream, candy, and pop.

New clothing is purchased each year for sale. Some popular items are T-shirts, hats, and sweatshirts.

## MEAL SERVICES

Meals will be served cafeteria style. Meals will be served inside, and dining will be outside. Scouts and adults should proceed to the Dining Hall as a Unit. The opportunity for Scouts and Scouters to acquire second helpings of food will be available after all units have been served in each meal session.

Camp accommodates dietary restrictions and needs. Please put this information in your registration prior to your arrival so we can prepare your meals properly. If it is not put into your registration, we cannot guarantee dietary restrictions and needs can be met. Please let the server know you have a special meal, and they will get it for you.

## LAUNDRY SERVICES

Butler Wilderness Outpost has coin operated washing machines and coin operated dryers located in the lower level of the Dining Hall. There is also an industrial washer and dryer about five miles from camp at Deer Lane Laundry.

## SHOWERS / TOILET FACILITIES

Shower facilities are at in the main camp area for use by leaders and Scouts. At Butler Wilderness Outpost, they are in the lower level of the Dining Hall. Leaders and Scouts as well as males and females must have separate shower facilities in accordance with BSA Youth Protection policies. Each room is lockable with running water, toilet and shower.



# SLEEPING ACCOMODATIONS

## TENT CAMPING

Butler Wilderness Outpost has 6 campsite options. Each campsite has access to drinking water, picnic tables, flagpoles, bulletin board, and a pavilion shelter. Each campsite will also have access to a latrine with toilet paper provided. Packs are expected to bring their own tents, camping gear, cooking equipment and other personal supplies. Don't forget your marshmallows, chocolate and graham crackers!

Please bring your own bear box or unit trailer to keep all food items in. Do not keep any food in tents or left outside unattended.

## RV / FAMILY CAMPING

Butler Wilderness Outpost has five RV hook-ups for families to use. If you prefer RV camping over tenting, there is an additional \$25 / night hookup fee, which must be paid online prior to arrival. The camp has water and electrical hookups but does not have a dumping station. Drinking water and an outdoor latrine are centrally located in the Family Camp Campground.

## TOWERS (INDOOR HOUSING)

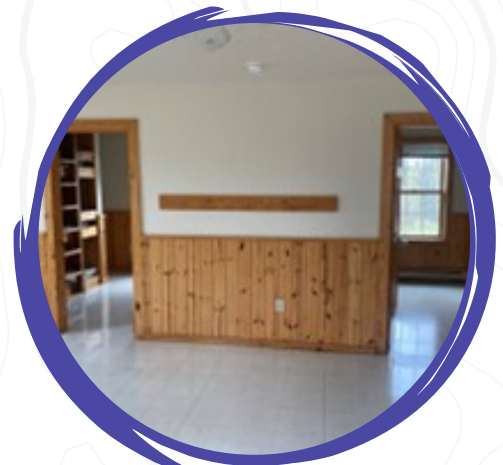
Butler Wilderness Outpost has two towers that will be available for indoor sleeping. Each tower has two floors, each floor has two rooms and a large open area for extra sleeping, additionally each room has 6 bunks. Each floor can hold up to 25 people.

### Pricing for Towers:

Scouts: \$225

Adults: \$125

Siblings: \$100



# PROGRAM

## CAMP THEME

You will see aspects of the theme in games, program areas, activities, and staff. Make sure you pack your sea costumes and join in on the fun! Campers and parents are to dress in costumes with the staff. Some ideas include sea creatures, pirates or mermaids!



Theme Night is a fun night spent exploring the sea! Each Scout will have the opportunity to build and decorate their own Raingutter Regatta Boat and there will also be sea-themed games and activities to do. This is your time to show off your costumes!

## NATURE

At Butler Wilderness Outpost you and your Pack are ecology-conscious individuals. Scouts involved in the Nature Program adventures to do. While earning these adventures, they'll learn many intriguing things about Mother Nature. You can go for a hike along the Nature Trail and see nature in both its unaltered form and in ways people have influenced it. Our Camp abounds in nature, and we encourage you to take it to the limits and explore it.

## FISHING

Our fishing program has gained recognition throughout the area. This program takes pride in the art of catching "The Big One". This area includes a dock, rods, reels, tackle, and bait. We have everything needed for a beginning angler!



## SHOOTING SPORTS

Scouts will have the opportunity to do three different shooting sports, including archery, BB guns, and slingshots. Please keep in mind that no personal firearms, archery equipment, or ammunition are allowed.

## WATERFRONT

The waterfront is a great way to cool off and have fun with your friends! From swimming, hanging out on the lily pad, or trying out rowboats and canoes. To go swimming or boating each person must take the BSA swim test. Packs do have the option of completing this before arriving at camp.





# CAMP POLICIES

## BIKES

It is the policy of the Northern Lights Council that bikes are not allowed on camp unless you get approval from the administration.

## SANDALS

It is the policy of the Northern Lights Council that closed-toe shoes must be always worn at camp, except while at the waterfront area and shower house.

## WEAPONS / KNIVES

Personal knives at camp must be no longer than a three (3) inch blade. ONLY Bear, Webelos, and Arrow of Light Scouts can carry their knife on them and ONLY after earning their Whittling Chip (which is offered at camp.) Wolf and Tiger Scouts may only use picket knives under strict adult supervision No personal firearms or archery equipment are allowed at Camp Wilderness.

## VEHICLES

When operating one of your private vehicles in Camp, please remember the following:

- The Camp speed limit is 15 mph.
- No passengers will be permitted in the beds of trucks or in trailers. All passengers must be seated inside the vehicle. Seatbelt use is required.
- You can drive your personal vehicles to your campsite to unload when you arrive and to load when you leave. We request that you keep your vehicle in the designated parking areas at all other times.
- Vehicles may not be left in campsites and must be out of your campsite before opening campfire.

## SMOKING AND VAPING

A designated smoking area is provided behind the dining hall on the Scouts BSA side. Camp policy requires all smoking and vaping to take place in this designated area.

## ALCOHOL / DRUGS

Alcohol and drugs / substances are not allowed at Camp Wilderness. This includes the use of marijuana.

# CAMP POLICIES

## STAFF HOUSING

Staff Cabins are reserved for staff only. Scouts and adult leaders cannot enter the cabins.

## DRONES

Camp Wilderness requires all use of drones to be in compliance with FAA regulations, including keeping them within line of site, flying no higher than 400 feet, and not to be flown directly over large gatherings of people.

## PHOTOS AND VIDEOS

Pictures and videos can be taken while at camp. If you see someone walking around camp with a red wristband, they cannot have their photo taken. We do have a camp photographer and videographer. You may see them around camp with various camera equipment. This person will be easily identifiable with a staff nametag. You can find all the promotional videos on our website.

## SOCIAL MEDIA

We have Facebook, Instagram, TikTok and YouTube. Throughout the week we will post videos and pictures of Scouts at camp. Each opening and closing campfire you can watch the start of it live on our Facebook page. If you have any photos or videos that you would like us to share. Please email them to the Camp Director.

## VISITORS IN CAMP

Visitors are always welcome at Camp Wilderness. If you know the parents of your Scouts will be visiting you at camp, please remind them that all visitors must check-in at the Black Building upon their arrival where they will receive their wristband, and check-out upon their departure. In addition, we encourage you to have a representative of your Troop meet your visitors at the Black Building upon their arrival.

If visitors would like to join in at a meal. They may purchase meal tickets at the Trading Post for \$8.50/meal. If visitors plan to stay in the camp overnight, they must be registered with the BSA and have a medical form with parts A & B on file with the camp health office.

# CAMP OPPORTUNITIES

## CAMP STAFF

Camp Wilderness is hiring for the 2024 camping season. There are a variety of positions available for youth and adults. Youth must be at least 15 to work at camp at aide level positions. If one is interested in an Area Director position, they must be at least 18 for some and 21+ for Aquatics, High Adventure, or Administration. Working on camp staff includes housing, 3 meals a day, bi-weekly salary, and 2 t-shirts.

Scholarship opportunities are available for those that work on camp staff 3 consecutive summers. Applications can be found at [nlcbsa.org/campstaff](https://nlcbsa.org/campstaff).

## COUNSELOR IN TRAINING (C.I.T.) PROGRAM

The Counselor in Training (C.I.T.) Program is a 2-week volunteer-based program for youth ages 14+. Being a C.I.T. is a program designed to prepare youth to be on camp staff. During the 2-week stay they will work directly with the Camp Wilderness Program Director, who will assign them to work in different program areas. They will have the opportunity to work in 4 different program areas. Being a C.I.T. includes tent housing, 3 meals a day, and 1 T-shirt. Applications can be found at [nlcbsa.org/campstaff](https://nlcbsa.org/campstaff)

## NORTHERN LIGHTS COUNCIL ALUMNI ASSOCIATION

The goal is to maintain the spirit, traditions, and memories of the Northern Lights Council Camps both past and present; to provide a means for alumni of the Northern Lights Council Camps to maintain affiliation with each other and with the Camps; and to contribute to the continued maintenance and development of the Camp's physical and human resources.

Membership in the Association is open to all past and current camp staff members, campers, or anyone who has interest in the Northern Lights Council. Our primary focus is on Camp Wilderness, Heart Butte and Big Four.  
[nlcbsa.org/alumni](https://nlcbsa.org/alumni)



# CAMP MAP

