

2026 Summer Cuboree



July 19th - July 22nd

Camp Durant





Camp Durant

4637 Old Carthage Road
Carthage, NC 28327

Camp Director

Erin Shiflett
erin.shiflett@scouting.org
(919) 475-7420

Director of Outdoor Programs

Michael Morrell
michael.morrell@scouting.org
(910) 701-0230



Occoneechee Council Office

3231 Atlantic Avenue
Raleigh, NC 27604

Camp Ranger

Terry McIntire
terriscottle.mcintire@scouting.org
(910) 824-6201

Emergency ONLY - After Hours

9PM - 9AM
(910) 948-3258



Put the Outing in Scouting!



Hey there Cub Families!

We are so excited to host another summer of fun, learning, and cub scout adventures! This year we are inviting our Tiger Cubs all the way through our Arrow of Lights for the campout of the summer. We are here to put the outing in scouting and show the passion we have for outdoor programs into our young scouts! Scouts will have the opportunity to camp in the outdoors in platform tents or bring their own, work on adventure loops, explore the outdoors and experience the paradise that is Occoneechee Scout Reservation.

Our staff is so excited for you all to join us this summer and join in on the scouting fun that they have created. This guide books should serve you as a best practices reference to help you prepare for a great week at Camp Durant! Please be sure to pay attention to details about program, procedures, services, and most importantly our packing list (a scout is ALWAYS prepared)!

So, don't put those halloween costumes away just yet and we are excited to see you this summer!

Scout On!



Erin Shiflett
Camp Director



Samuel Harrelson
Program Director



Michael Morrell
Reservation Director

Table of Contents

Contact Information.....	2
Letter to All.....	3
Table of Contents.....	4
Fees and Schedules.....	5
Camping Accommodations.....	6
General Camp Information.....	7
Food Service & Dietary Needs.....	10
Trading Post & Grill.....	11
Arrival Schedule.....	12
Camp Attire.....	13
Daily Schedule.....	14
Advancement Details.....	15
Arrow's EDGE (AOL Program).....	16
Campwide Activities.....	17
Adult Training.....	18
Six Essentials.....	19
Reminders.....	20
Recommended Packing List.....	22
Medical Policies.....	23
Attendance Roster.....	24
Swim Check Form.....	25
Mission Statement.....	26
Camp Map.....	27



Fees and Schedules

2026 Summer Cuboree Fees:
Registration Opens April 25th, 2026

Cub Scout Youth	Cub Scout Sibling (over the age of 5)
\$115	\$115
Adult Leader/Den Chief/Parent	
Summer Cuboree Fee: \$70 Registration opens April 25 th , 2026	
Late Fee	
Registration Deadline: July 1 st , 2026 \$10 Per Person Late Fee after deadline	

PAYMENTS CAN BE MADE:

- *via Black Pug**
- *By calling into the Occonechee Council Office**
- *Mailed or brought into the Occonechee Council Office in person*

Occonechee Council,
Scouting America

3231 Atlantic Avenue
Raleigh, NC 27604
919.872.4884 (Ask for Myke)

REFUND POLICY

All fees are refundable until July 5th, 2026.

After July 5th, 2026, registration fees are NOT REFUNDABLE unless there are extenuating circumstances.

EXTENUATING CIRCUMSTANCES INCLUDE:

- **Death of an immediate family member**
 - **Sickness/Injury**
 - **Military Transfer**
 - **Summer School**

NON-EXTENUATING CIRCUMSTANCES:

- **Vacation Schedule**
 - **Sports**
 - **Work**
 - **Other Camps**
- **Last Minute Change of Mind**

Unit must present documentation verifying the extenuating circumstances by a third party (i.e., doctor, military officer or school principal) to receive a refund.

- A refund request form must be filled out and turned in during the check-out process in the Administration Building before the end of camp.
- Refund checks will be issued to the treasurer listed on the refund request form within 30 days after the end of your summer camp week.

*Payments made by credit card may be subject to a 3% convenience fee.



Camping Accommodations

Campsite Availability:

Each campsite holds approximately 40 people if tent platforms and tents are to be used. If your Pack prefers a specific site, please indicate this on your Campsite Reservation Application. Every effort will be made to accommodate your request. If there are notes to include about a member of your Packs mobility or accommodations, please ensure that you include this also so we can make well informed decisions when it comes to campsite selections. Please understand that due to demand, the configuration of Packs, and limited resources at the end of the summer, there will be more than one Pack per site. We encourage all families to pack their own tents and equipment to best prepare yourselves for future Pack adventures. If a member of your pack needs a canvas tent (comes with 2 cots per tent), please note this in your reservation so we can plan accordingly.

Campsite Amenities:

Every campsite is equipped with a bathhouse that have 3 flushing toilets and 3 showers with hot water! Each campsite has a designated A and B side that each have their own shelter. Each shelter is equipped with power and some are ADA-accessible. All sites have perma-frame tents that are set up on wooden platforms. Each tent is equipped with two military style cots. We recommend that those with a CPAP machine or other necessary medical equipment bring extension drop cords.

Leadership:

To ensure that all scouts have the appropriate leadership they need in order to scout safely, all Packs/Dens are required to have two-deep leadership for every six (6) youth. A parent/adult buddy is REQUIRED for all Cubs attending without a Pack. Lastly, rising first graders (Tiger Cubs) can participate in resident camping along their adult partner, but tiger cubs must maintain an adult partner their entire stay.



General Camp Information

Parking:

Visitor parking is available in the large parking area in front of the Administration Building. Parking will be at the campsites for camper convenience. All cars, once parked, are required to remain parked in the site for the duration of the event unless otherwise notified to Camp Leadership. Handicap driving passes will be handled on a case-by-case basis.



Ranger & Target Activities (RATA):

We provide all the BB guns, BB's, targets, and archery equipment. All equipment used in the RATA program is under the supervision of a certified Range and Target Activities Director.



Visitors:

For your protection, all campers (youth and adult) who leave camp must check out and in with the Administration Building. Day visitors are not allowed to stay overnight at Camp Durant. All visitors must check out at the Administration Building by 8:30 PM. Please note that the camp-wide speed limit is 15 MPH.

If a camper must leave camp and is picked up by a parent or guardian, a driver's license must be provided to the administration building for that camper to leave.

Visitors may eat in the Grand Lodge - to do so, a meal ticket must be purchased from the camp office. A visitor meal is \$10.00.

Pets in Camp:

In compliance with Scouting America policies, no pets will be allowed in camp during the summer camp season.



General Camp Information

Camp Emergency:

An emergency drill will be conducted your first day at camp (Monday). In the event there is a camp-wide emergency, a plan is in place to deal with a lost person, missing swimmer or other accidents. In the event that an emergency is declared, a camp-wide siren will be signaled and you will be required to report to the grand Lodge with your Scout/Unit. Once there, we ask that all units line up at their campsite marker where Camp Leadership will gather attendance and determine next steps to maintain safety.

Alcohol, Drug & Tobacco Policy:

It is the policy of Scouting America that the use of alcoholic beverages and controlled substances is not permitted in camp or activities on property owned and operated by Scouting America, or at any activity involving participation of youth members.

For the health of all Scouts and Leaders, please respect the rights of all others and refrain from smoking and vaping at Camp Durant. This includes the use of electronic cigarettes, personal vaporizers, or electronic nicotine delivery systems that simulate tobacco smoking.

Cell Phone Service:

Camp Durant is in a remote area and cell phone service is unreliable. Some carriers may have slightly better reception than others. Camp is meant for getting away from it all!! Enjoy the break!



General Camp Information



Internet Access

Camp Durant has password protected internet access at all major facilities (Sullivan Center, Administration Building, Grand Lodge, and STEM center). If needed, the Beluga Club is our designated location for Leaders to be able to work from camp. Each leader will be issued a password in their check-in packet. We encourage all leaders and parents to not share the password with Scouts so they can take full advantage of being in the outdoors.



Weather Impacts on Program Activities

Camper safety is our first priority. Occasionally, camp program and activities can be impacted by weather events. In particular, Aquatics, the Ranges, and the Climbing areas are often first to be impacted. Thunder & lightning in the vicinity of camp can cause us to “delay” or “cancel” these activities by a minimum of 30 minutes per safety guidelines.

In the event of severe weather, camp leadership will execute their safety protocols to ensure all campers and leaders are in safe locations. All campsite bathhouses are perfect locations to seek shelter if necessary from intense wind or storms. If the camp siren sounds, all Packs/campers/families are to report to the assembly field, line up behind their campsite marker and follow directions from camp leadership.



Medical Services

Because Summer Cuboree is over the 72 hour period, all participants (adults included) will need to bring a completed and up to date Annual Health and Medical Record (parts A, B, and C) to camp. This form is available through [scouting.org](https://www.scouting.org). Proof of insurance must accompany the Health Form. If no insurance provided, please write ‘self-insured’ on the back. All health records will be collected at Sunday check-in, kept in a secure location at the health lodge and returned at check-out on Wednesday.

Parents/Guardians are responsible for administering medications and keeping said medications located in a secure place. Refrigeration, if required, is available at the Health Lodge. There will be a Staff Medic to assist with medical emergencies. The camp utilizes 911 services for Moore County.



Food Service & Dietary Needs

Grand Lodge

All participants will enjoy their meals together in the air-conditioned Grand Lodge, where food is served cafeteria style. The menu will include a variety of great food options, ensuring a delightful dining experience for everyone. In addition to hearty main dishes, there will be a well stocked salad bar featuring fresh greens, colorful vegetables, and a range of dressings to cater to different tastes.

Special Dietary Concerns

Camp Durant partners with Kandle Dining for its food services. The dedicated team at Kandle strives to ensure that both you and your scouts receive nourishing meals while addressing any dietary concerns. To assist with these needs, Kandle employs a Dietary Needs Professional. To ensure your dietary requirements are met, please follow these steps:

1. Dietary needs must be submitted to Kandle Dining via a link that is included in the registration process. You can also access the request form with the QR code found below. If we do not have this information, we cannot guarantee specialized meals for your Scout.
2. If the listed menu items do not meet your needs, you will need to bring supplemental items with you. Upon check-in, you can store your labeled cooler in our walk-in cooler or freezer.
3. We recommend that you work directly with our dietary lead. Contact information will be provided closer to Summer Camp.
4. There is a designated serving line for adults and youth with special dietary needs. This line allows them to get the attention they need and not get lost in the crowd at mealtime.



Trading Post & Grill

TRADING POST

Camp Durant is proud to provide a Trading Post Facility to serve campers, staff & visitors with smiling faces and knowledgeable personnel. The Camp Durant trading post has all that your scout may need while at camp. We recommend that each scout bring a minimum of \$80 to camp for purchases in the trading post and grill. We accept all major credit cards and accept tap to pay.

The trading post sells a camper's favorite camp gear including sweatshirts, tshirts, toys, games, water bottles, knives, and of course the latest Camp Durant Ice Company Merch! We also sell smaller toiletry items such as toothbrushes, shampoo, toothpaste just in case something is forgotten.

GRILL

The grill at Durant is the go-to place for all your snacking needs! Scouts can enjoy hot pretzels, hot dogs, ice cream and more! Don't miss our signature Slush Puppies! We recommend Scouts to utilize the grill as a go-to place for an extra bite to eat, while still being able to enjoy the menus provided during meal times. We recommend taking into account small snacks into the recommended allowance for camp.

TRADING POST & GRILL HOURS	
Sunday	After Campfire – 10:00 PM
Monday & Thursday	9:00 AM – 10:00 AM 1:15 PM – 5:30 PM 7:30 PM – 9:30 PM
Tuesday	9:00 AM – 10:00 AM 1:15 PM – 5:30 PM
Wednesday	9:00 AM – 10:00 AM 1:15 PM – 5:30 PM TP Only - 6:30 PM – 7:30 PM
Friday	9:00 AM – 10:00 AM 1:15 PM – 5:30 PM After Campfire – 10:00 PM

Hours are always subject to change



Arrival Schedule

Schedule subject to change

Check-In: Sunday

Camp Gate

1:00 - 3:00 PM

Check-In & receive Camp Assignment

1:30 - 4:00 PM

Settle into Campsite

Medical Checks

Swim Checks***

Dining Hall Operations

Tour of Camp

4:30 PM

Leader's Meeting (Dining Hall)

5:00 PM

Back in Campsite, get aquatinted, prepare for dinner

6:15 PM

Assembly at Dining Hall (In uniform)

6:30 PM

Dinner

7:00 - 8:00

Camp Carnival

After checking in at your campsite, there will be a camp guide to escort you through the check-in process including medical form checks, waterfront orientation and swim checks (weather and time permitting), followed by a visit to the Grand Lodge to review dining hall procedures.

*** Please carry a day pack and water with you so that you can change into your swim-wear quicker if you are not already wearing your swimsuit, instead of having to unpack all your gear. There will be plenty of time to unpack your gear and set-up after the orientation process. ***



Camp Attire

Field Uniforms (Class A)

We recommend all scouts to wear their Field Uniform during evening, assembly, meals, and campfires

**Field uniforms are highly recommended for these activities, but not required for those who families and scouts who do not yet own a uniform. **



Activity Uniform

Scouts are encouraged to wear their activity uniform during the remainder of camp for example: Check-in & out, activities during the day/evening

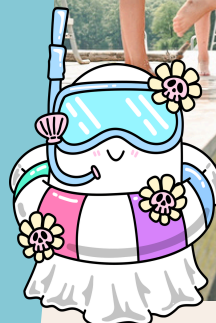
When a Cub Scout wears a Scout related t-shirt with scout shorts and socks, it's called an "Activity uniform". The activity uniform is sometimes referred to as a Class "B" uniform.

Shoes: Closed toed shoes for all activities. Water shoes/sandals are recommended for waterfront and showering.



Swimwear

Camp Durant follows Scouting America's recommendations for swim wear, which states "swimwear should be secure, clean, and designed specifically for swimming. For extra sun protection, we may wear a rash guard or T-shirt as long as it's safe for the activity."





Daily Schedule

Schedule subject to change

Monday/
Tuesday

- 8:00 AM Morning Assembly, color guard in field uniform
- 8:15 AM Breakfast
- 9:00 - 10:15 AM Session 1
- 10:30 - 11:45 AM Session 2
- 12:15 - 12:45 PM Floating Lunch
- 1:00 - 1:50 PM Quiet time, Den time, on your own
- 2:00 - 3:15 PM Session 3
- 3:30 - 4:45 PM Session 4
- 5:00 - 5:45 PM *Open Area*
- 6:15 PM Flags
- 6:30 PM Dinner
- 7:00 - 8:30 PM Campsite Activities
- TUESDAY ONLY** [*7:30PM *Gather at Vista for Campfire*
*8:00 PM *Closing Campfire*
- 9:30 PM Lights out!



Wednesday

- 8:00 AM Floating Breakfast
- 8:45 - 9:00 AM Clean Campsite/Check Out
- 10:00 AM Depart

Advancement Details

Session Activities

Based on number of campers attending, groups will rotate through activity areas based on group size and rank. Packs will have the opportunity to travel together depending on size. Advancement is based on theme related activities. Not all activities will be completed in full. An Advancement Report will be supplied at the end of camp. All advancements should be reported to the Scout's Den Leader.



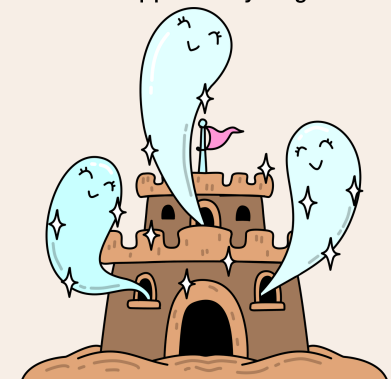
9:00 - 10:15 AM	Session 1
10:30 - 11:45 AM	Session 2
1:00 - 1:50 PM	Quiet Time/Den Time
2:00 - 3:15 PM	Session 3
3:30 PM - 4:45 PM	Session 4
5:00 - 5:45 PM	Open Area
7:00 - 8:30 PM	Campsite Activities

Tentative Advancement Activities (subject to program changes)

We are planning activities for Tiger, Cubs, Wolf, Bear, Webelos and AOLs. Advancement opportunities are based on a planned program and we encourage you to bring their handbooks. There may be activities that you choose to do on your own. Activities are planned for the following areas:

Swimming
RATA (BB and Archery)
Handicraft
Outdoor Skills and Ecology
Bouldering
Climbing

There will be plenty of opportunities for you to experience Camp Durant at your own pace. Fishing and hiking on your own as well as a volleyball and basketball court on the activity field. There will be free time activities in most areas and an opportunity to go back to your favorite area for more fun!





Campwide Activities



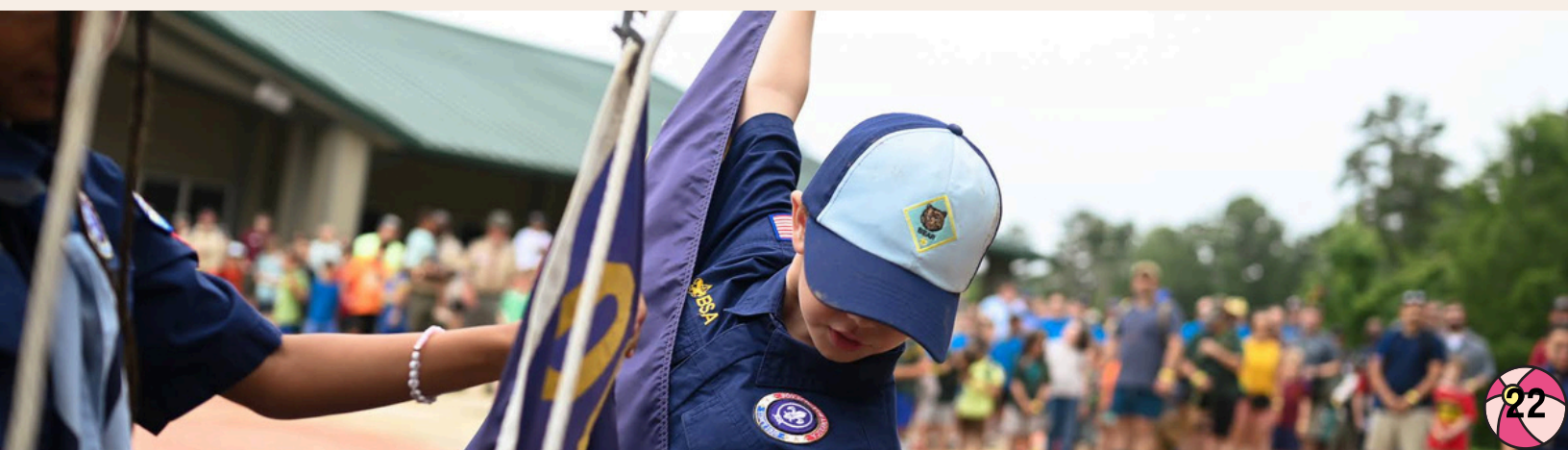
Open Areas

There is plenty for Cub Scouts to do at Summer Cuboree. There are Den times scheduled where Dens are free to enjoy all Durant has to offer. Dens may go on a hike, go fishing, swimming or boating on Nello Teer Lake. The Camp Staff will have the CLimbing Tower, BB and Archery Ranges, and Waterfront open for cubs to use. There is a Gaga Ball Pit and Cubs can even search for fossil sharkes teeth near the STEM center. There is a lot of exciting things to do at Camp Durant and the Open Den Time is a chance to see a little bit of all that can be done at camp.

Other open programs include our Campwide Carnival that happens on Sunday night and our Tuesday night closing Campfire. All campwide programs are subject to change.

Flag Ceremonies

The camp will assemble for Flag Ceremonies in the morning and evening. Scouts and Leaders are expected to attend the Flag Ceremonies in full Field uniform. Packs will have the opportunity to show off cheers and run-ons during Roll Call. Cubs are encouraged to be creative, but longer skits and songs are better suited for meals and Campfires.



Adult Training

Leader's Meeting

A leader's meeting will be held on Sunday after check-in at 4:30 PM. At the Leader's Meeting, adults will receive updates on any special events happening for the day and have an opportunity to ask questions. This leaders meeting will be an opportunity for you to meet key members of the leadership team and receive any updates or clarity needed for the week.

Safe Swim Defense and Safety Afloat

On Monday morning we will provide a Safe Swim Defense and Safety Afloat training for any leaders interested in obtaining their certifications. This is a classroom only portion and you will not be getting in the water. The course will be held at the Harrison C Smith Aquatics Center and will last approximately 1 hour. This training is recommended to those leaders who wish to continue in possible Aquatic activities with their units.

BALOO

This year we will be hosting a BALOO training for leaders who need it. We do ask that individuals who sign up for the BALOO course ensure that their scouts are still under appropriate leadership guidance and that your units are still able to abide by the rules and regulations laid out in the Safeguard Youth Training. This course is expected to run from Monday morning to Tuesday afternoon. All times are subject to change as planning continues. The course will cost an extra \$15 for those leaders interested in participating.



Six Essentials for Hiking and Camping

While doing any outdoor activity with your Cub Scouts, each Scout should have the following:

1. First Aid Kit

Cub Scouts will only need a small kit of their own. Their kits should have some adhesive bandages, moleskin to prevent blisters, antibiotic ointment (single use packages work great), and insect bite pain reliever. This is not a comprehensive list, but it will get your Cub Scout (or your own kit) started!



2. Flashlight

For camping and to have at night.



3. Water Bottle

Keeping your Cub Scout hydrated is crucial, especially when it is hot out. Everyone should have a water bottle that will hold enough water for the entire hike. If you're going on a longer hike and need to carry more water, a camelback hydration pack is a great solution.



4. Trail food

Trail mix, granola bars (without chocolate), fruit...all are great examples of trail food that is healthy, energy boosting and does not need to be refrigerated.



5. Whistle

There are two things your Cub Scouts need to know about the whistle:

1. It's for emergencies ONLY
 2. Three blasts of the whistle means "HELP!"
- *We recommend practicing the help signal before the hike or during a den meeting to help scouts understand the rules and use of the whistle.



6. Sun Protection

We all know how important sunscreen is - even when it's cloudy. We always recommend wearing a hat and lip balm when able.



Reminders:

In Case of Emergency

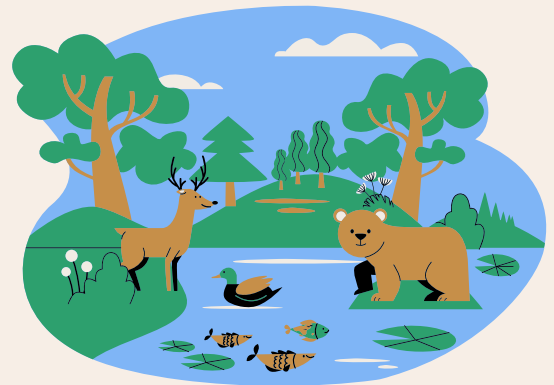
Occoneechee Scout Reservation has a Health Lodge open 24 hours a day and is managed by staff members trained in handling accidents and illnesses. There are also hospitals and clinics nearby. If this kind of treatment is required, the Scout's parents will be notified by telephone and their wishes concerning treatment will be respected. If such a trip is required, we ask that a Scout's Leader drive the Scout to the hospital. This way the Health Officer will still be available at camp to treat any other potential injuries.

In the event of a camp-wide emergency, the camp siren may sound. At which, everyone in camp should report to the Assembly Field (flag poles) and wait for further instructions from Camp Staff. The Camp Staff undergoes training in handling common types of emergencies. A camp-wide emergency situation may consist of severe weather, wildfire, missing campers, missing swimmers, or any possible severe medical emergency. Anyone who becomes aware of an emergency situation or danger should notify a staff member who will contact camp leadership.

Should you need to contact any camp leadership, there are emergency contact cards located around camp at each campsite, the Grand Lodge, and program areas.

Wildlife

Occoneechee Scout Reservation is a wilderness setting where it is common to encounter various forms of wildlife such as deer, turkey, fox, racoons, snakes, turtles and more. Bites from animals are extremely rare, but precautions should be taken. Observe wildlife from a distance so they are not scared and do not disturb wildlife just for a better look.



Safety Tips

Safety is the first priority at camp. Here are a few helpful tips for a fun, safe camping experience:

- No riding in the back of trucks or trailers
- Wear closed-toed shoes
- Always use the buddy system; two or more scouts go everywhere together
- Fires should be completely extinguished before leaving the campsite; please do not create new fire rings.
- Follow Whittling Chip procedures when using knives.
- Use insect repellents containing DEET or Permethrin
- Carry flashlights when walking at night
- Shake out clothing and shoes before wearing them
- Keep food out of tents
- Check for ticks and tick bites daily (tick bites treated within 12 hours rarely have any long-term effects)
- Please become familiar with Scouting America's "Guide to Safe Scouting"

Reminders:

Firewood

We ask that Packs do not bring their own firewood. If a Pack would like to have a campfire ask the Camp Durant Staff and they will provide you with firewood, you can also collect downed wood from the forest. Please do not cut wood from a tree that is alive or budding greenery.



Lost & Found

Lost and Found is located on the Hearth at the Grand Lodge. Items of value will be given to the Camp Director. If you lose something during your stay, check with the Camp Staff to see if the item has been turned in. To make it easier to recover lost items, scouts should clearly mark their items with their name and pack number.

If you return home and discover a missing item, call the Admin Building (910) 948-2382 for the missing item. After the summer camping season, all items in the lost and found will be donated or thrown away.

Swim Checks

All Cubs and Adults who wish to participate in any waterfront activities (including swimming and boating) must complete a swim check and be classified according to their swimming ability.

Swim checks will take place at the waterfront after check-in from 2:30 to 4:00 PM with qualified lifeguards. Each Cub and Adult will be assigned a buddy tag.

Safeguard Youth Policies:

Scouting America is committed to the highest standards for youth safety. Youth protection requires sustained vigilance, and we work every day to protect children through mandatory policies.

- Scouting America requires adults accompanying a Scouting unit who are present at the activity for 72 total hours or more must be registered as a leader, including the completion of a criminal background check and Safeguard Youth Training.
- 1:1 contact between adults and youth members is prohibited.
- Privacy of youth and adults is respected. Adult leaders and youth must respect each other's privacy, especially in situations such as changing clothes and taking showers at camp.
- Adults may not share a tent with a member of the opposite sex unless they are married.
- No youth may share a tent with an adult or person of the opposite sex other than a family member or guardian.
- The buddy system should be used at all times. The buddy system is a safety measure for all scouting activities. Buddies are encouraged to select each other, with no more than two years age difference.
- Hazing and initiations are prohibited and may not be included as part of any scouting activity.
- No bullying. Verbal, physical, and social bullying are prohibited in scouting.

Summer Cuboree Recommended Packing List

The following is a suggested list of equipment for an enjoyable stay at camp. Please label all items with the Cub Scout name and the Pack number. Please pay special attention to items that should be left at home.

Personal Gear

- Uniform
- Activity Shirts and pants (2)
- Socks and Underwear
- Jacket
- Rain Gear
- Sleep Wear
- Day Pack
- Sneakers &/or Hiking boots
- Swimwear/swim shoes
- Towels & Toiletries
- Shower Shoes
- Sleeping Bag or blankets
- Pillow
- Flashlight w/ extra batteries
- Water bottle
- Wallet w/ Money for Trading Post & Grill
- Handkerchief
- Bug repellent
- Sun screen
- Cub Scout Handbook

Optional Gear

- Watch
- Camera
- Song book
- Bible, prayer book
- Fishing pole & tackle
- Laundry Bag
- Camp Chair
- Stationary and stamps



Please leave at home:

Fireworks, firearms, ammunition, aerosol cans, radios, televisions, personal music devices, electronic games, squirt guns, dice, un-scout like literature, alcohol and illegal drugs.

Medical Policies

Health Forms:

Youth and adult participants are required to bring a completed and up-to-date Annual Health and Medical Record (parts A, B, and C) to camp. This form is available through [scouting.org](https://www.scouting.org). Proof of insurance must accompany the Health Form. Camp Medics and other trained representatives will review each medical form on check-in on Sunday. Camp Medics will communicate all concerns and questions to unit leaders. While at camp, the camp's medical staff will keep the unit's medical records on file for the week. The records will be returned to the unit on Saturday, included with their checkout packets.

This health form needs to be completed annually. Health forms that are nearing one year of proof can be accepted, provided their entire stay at camp falls within the same month of that exam. Ex: If you are attending camp on June 15th, your physical can have a date no earlier than June 1, 2026.

If your health form is not up-to-date at check-in, there are healthcare providers off-site within 20 minutes of camp that are able to complete a physical and update the form for a small fee. This must be completed and reviewed by the Camp Medic by Monday afternoon to stay at camp.

Medicines and Medical Care:

Camp Durant's Health Lodge is staffed by our camp medics (EMT certification and higher). It is open throughout the day and evening to treat minor injuries and illnesses. For injuries and illnesses beyond the scope of practice of our camp medics, we refer out to the First Health urgent care and/or to the First Health Moore County Hospital. Scouts that are sent out of camp for medical care need to be accompanied by two adult leaders and with parental consent.

We encourage all scouts to be responsible for their daily medication taking. All prescription medication are to be kept in a locked storage and in compliance with local and state laws. Medications that require refrigeration can be kept in the Health Lodge. If a scout is being sent with medication, please ensure that all medication are sent in their original container.

Scouts and leaders who carry inhalers and/or epi pens are recommended to carry it on their person at all times. We recommend all individuals who carry to keep it in a secure location that is known by their buddy, adult leaders, and medical staff in case of emergency.



Insurance:

Each registered Scout in the Oconeechee Council attending camp is covered by health and accident insurance. This coverage is secondary and is in effect only when the individual is not covered under any other policy.

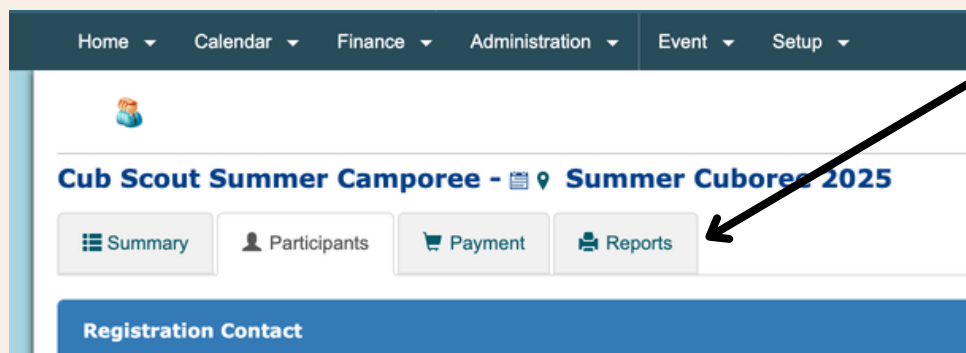
Immunizations:

The state of North Carolina Immunization Unit requires that all persons attending camp have adequate immunizations which consist of those listed on Part B of the medical form.

Attendance Roster/Black Pug Assistance

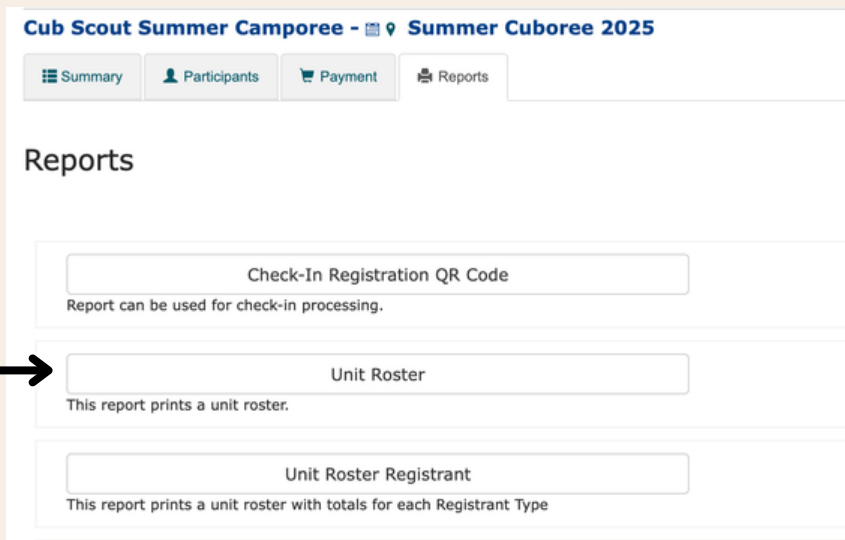
Packs/Dens bringing multiple youth to resident camp will need to provide a complete roster of campers. Two (2) deep leadership is required for every six (6) youth attending. All Leaders must be registered and provide a copy of their current Safeguard Youth Certification.

Your roster will be located on your Black Pug registration account. The leader who registered the pack will have access to reports like such. To access this, Log-in to the primary registrants account.



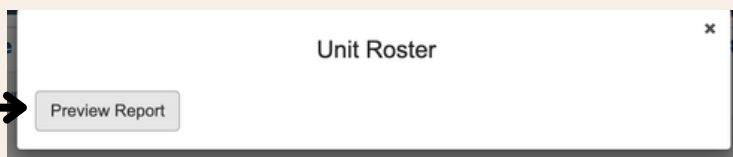
Click 'Reports'

We recommend all participants register together as ONE pack as to make finalizing your roster easier. We also recommend that the registration contact is your Onsite Leader.



Click Unit Roster

Click 'Preview Report'




This will come as a pop-up. Once you hit 'Preview Report' it will take you to a separate page that allows you to review and download your roster!

Attendance Roster/ Black Pug Assistance

EXAMPLE ROSTER FORM

Scouting America
Occoneechee Council

Camp Durant
Cub Scout Summer Camporee - Unit Roster



Onsite Leader: _____
Name Address ZIP Phone Email

Adult (6)

Name	Cell	Health	Days Attending	Notes
1		<input type="checkbox"/>	S M T W T F S	
2		<input type="checkbox"/>	S M T W T F S	
3	REDACTED		S M T W T F S	
4	REDACTED		S M T W T F S	
5		<input type="checkbox"/>	S M T W T F S	
6		<input type="checkbox"/>	S M T W T F S	

Youth (6)

Name	Health	Rel	PU	Age Rank	Swim Check	DOB	Notes
1	<input type="checkbox"/>	<input type="checkbox"/>	<input type="checkbox"/>				
2	<input type="checkbox"/>	<input type="checkbox"/>	<input type="checkbox"/>				
3	<input type="checkbox"/>	<input type="checkbox"/>	<input type="checkbox"/>	REDACTED			REDACTED
4	<input type="checkbox"/>	<input type="checkbox"/>	<input type="checkbox"/>				
5	<input type="checkbox"/>	<input type="checkbox"/>	<input type="checkbox"/>				
6	<input type="checkbox"/>	<input type="checkbox"/>	<input type="checkbox"/>				

Look over and ensure all information is correct. Print and bring with you to Check-In!

Reminders:

- All Tiger Cubs MUST be accompanied by Parent (guardian)/Partner!
- Leaders should bring a copy of emergency contact information for all campers.



Camp Durant Mission Statement:



It is the mission of the Occoneechee Scout Reservation to provide Scouts and Families with a safe, fun, and educational outdoor program full of opportunities such as:

- Practicing the Patrol Method
- Encouraging leadership and learning experiences that enhance personal skills and result in rank advancement
- To achieve personal goals
- To experience the fun and adventure only found in the outdoors.

Camp Durant is Nationally Accredited by the National Council of Scouting America. Regionally trained appraisers inspect the camp annually. Key staff members are trained through National Camp School and all staff members are trained in CPR and basic first aid.

The Occoneechee Council, in collaboration with the community, operates to serve the youth of Central North Carolina by providing an environment where leadership opportunities, life-long skills, strong values and morals are the outcomes desired for future generations.

The Occoneechee Scout Reservation and Camp Durant does not discriminate against any person based on race, color, religion, creed, age, marital status, or any other legally protected characteristic in the administration of any program.

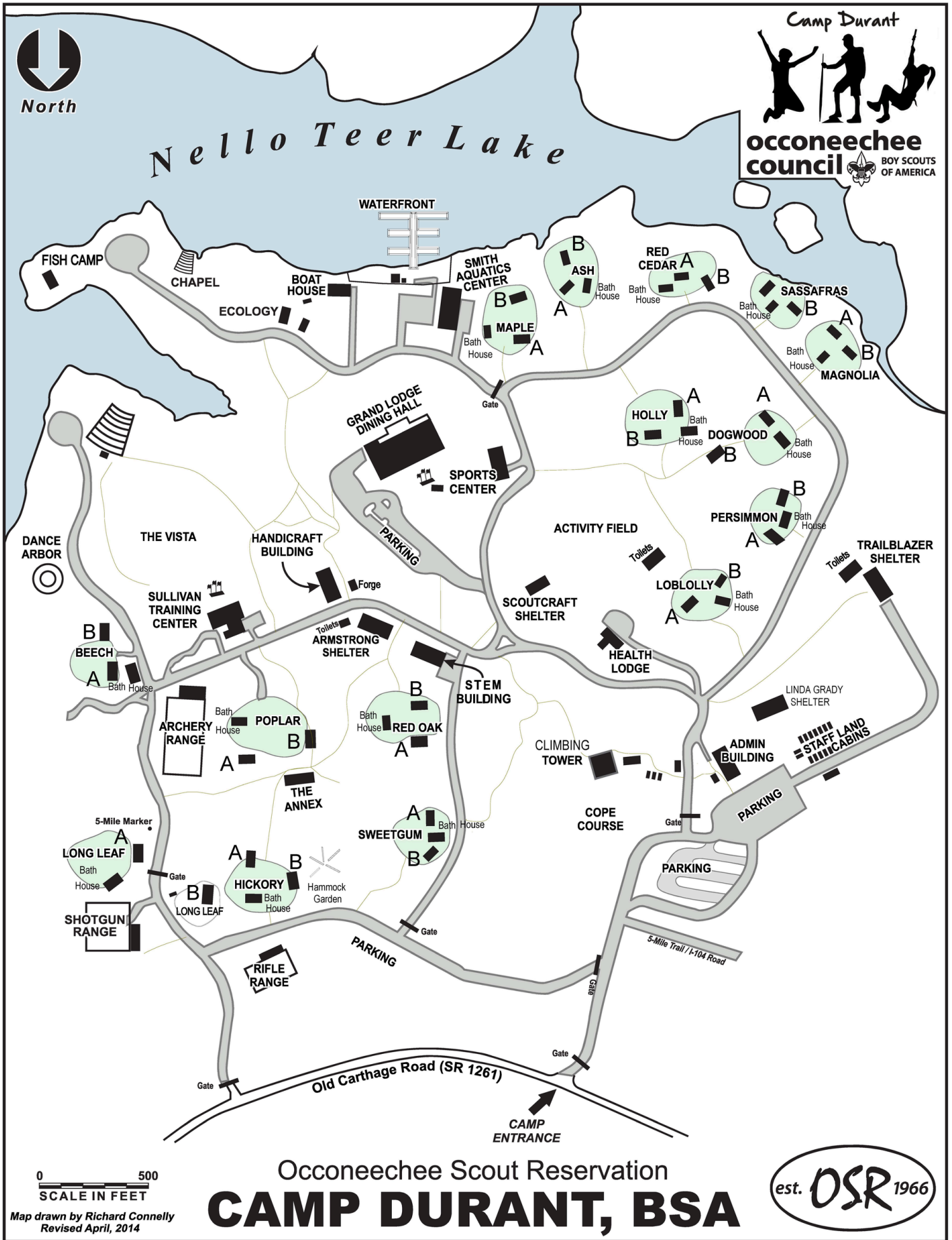
The Occoneechee Scout Reservation and Camp Durant will endeavor, as far as practically applicable, to meet the needs of the disabled under the direction of the ADA (1990). Any Scout or leader with a disability requiring the intervention of the camp staff including dietary restrictions (halal, Kosher, etc) should contact Camp Administration at least one week prior to attendance at Summer Cuboree.





North

Nello Teer Lake



0 500
SCALE IN FEET

Map drawn by Richard Connelly
Revised April, 2014

Occoneechee Scout Reservation CAMP DURANT, BSA

