

Cub Scout Adventure Camp



Cutler School of Wizardry

# Overview



Matrix



Medical Forms and Medications



Safeguarding Youth



Dietary Needs



Packing List



Sleeping Accommodations



Swim Checks & Boating



Schedule & Check In



Electives & Open Programs



Hikes



Theme



Village Cup



AOL Week





# Medical Forms and Medications

### Part A: Informed Consent, Release Agreement, and Authorization A

Full name: \_\_\_\_\_ High-altitude base participants  
 Date of birth: \_\_\_\_\_ (MM/DD/YYYY)

**Informed Consent, Release Agreement, and Authorization**

I, the undersigned, hereby consent to participate in the High Altitude Research Expedition (HARE) and to be included in the HARE database. I understand that the HARE is a research project that involves the collection of biological and medical samples from participants at high altitude. I understand that the HARE is a research project that involves the collection of biological and medical samples from participants at high altitude. I understand that the HARE is a research project that involves the collection of biological and medical samples from participants at high altitude.

**Complete this section for youth participants only:**

I, the undersigned, hereby consent to participate in the HARE and to be included in the HARE database. I understand that the HARE is a research project that involves the collection of biological and medical samples from participants at high altitude. I understand that the HARE is a research project that involves the collection of biological and medical samples from participants at high altitude.

Prepared, For Life.

### Part B1: General Information/Health History B1

Full name: \_\_\_\_\_ High-altitude base participants  
 Date of birth: \_\_\_\_\_ (MM/DD/YYYY)

Sex: \_\_\_\_\_ Height: \_\_\_\_\_ Weight: \_\_\_\_\_

**Health History**

No.	Yes	No	Substance	Exposure	Health Status: Yes / No
1			Alcohol		
2			Illicit drugs		
3			Medications		
4			Smoking		
5			Other substances		
6			Chronic conditions		
7			Recent illnesses		
8			Chronic pain		
9			Chronic fatigue		
10			Chronic cough		
11			Chronic asthma		
12			Chronic heart disease		
13			Chronic kidney disease		
14			Chronic liver disease		
15			Chronic lung disease		
16			Chronic neurological disease		
17			Chronic autoimmune disease		
18			Chronic infectious disease		
19			Chronic cancer		
20			Chronic mental health condition		
21			Chronic hearing or vision impairment		
22			Chronic dental issues		
23			Chronic skin conditions		
24			Chronic blood pressure		
25			Chronic cholesterol		
26			Chronic diabetes		
27			Chronic thyroid disease		
28			Chronic anemia		
29			Chronic kidney stones		
30			Chronic gallbladder disease		
31			Chronic pancreas disease		
32			Chronic bone disease		
33			Chronic autoimmune disease		
34			Chronic infectious disease		
35			Chronic cancer		
36			Chronic mental health condition		
37			Chronic hearing or vision impairment		
38			Chronic dental issues		
39			Chronic skin conditions		
40			Chronic blood pressure		
41			Chronic cholesterol		
42			Chronic diabetes		
43			Chronic thyroid disease		
44			Chronic anemia		
45			Chronic kidney stones		
46			Chronic gallbladder disease		
47			Chronic pancreas disease		
48			Chronic bone disease		
49			Chronic autoimmune disease		
50			Chronic infectious disease		
51			Chronic cancer		
52			Chronic mental health condition		
53			Chronic hearing or vision impairment		
54			Chronic dental issues		
55			Chronic skin conditions		
56			Chronic blood pressure		
57			Chronic cholesterol		
58			Chronic diabetes		
59			Chronic thyroid disease		
60			Chronic anemia		
61			Chronic kidney stones		
62			Chronic gallbladder disease		
63			Chronic pancreas disease		
64			Chronic bone disease		
65			Chronic autoimmune disease		
66			Chronic infectious disease		
67			Chronic cancer		
68			Chronic mental health condition		
69			Chronic hearing or vision impairment		
70			Chronic dental issues		
71			Chronic skin conditions		
72			Chronic blood pressure		
73			Chronic cholesterol		
74			Chronic diabetes		
75			Chronic thyroid disease		
76			Chronic anemia		
77			Chronic kidney stones		
78			Chronic gallbladder disease		
79			Chronic pancreas disease		
80			Chronic bone disease		

Prepared, For Life.

### Part B2: General Information/Health History B2

Full name: \_\_\_\_\_ High-altitude base participants  
 Date of birth: \_\_\_\_\_ (MM/DD/YYYY)

**Allergies/Medications**

DO YOU USE AN OSTREOMYCEIN ALLERGEN? Exp. date (MM/YY) \_\_\_\_\_ YES / NO

DO YOU USE AN ASTHMA RESCUE INHALER? Exp. date (MM/YY) \_\_\_\_\_ YES / NO

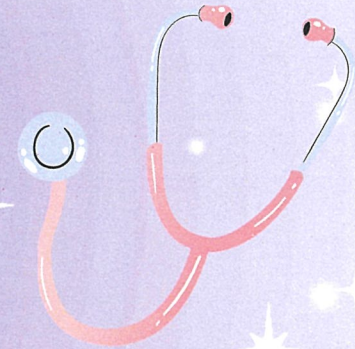
No.	Yes	Exposure to substance	Exposure	No.	Yes	Exposure to substance	Exposure
1		Penicillin		1		Penicillin	
2		Amoxicillin		2		Amoxicillin	
3		Sulfonamides		3		Sulfonamides	
4		Trimethoprim		4		Trimethoprim	
5		Vancomycin		5		Vancomycin	
6		Clindamycin		6		Clindamycin	
7		Fluoroquinolones		7		Fluoroquinolones	
8		Macrolides		8		Macrolides	
9		Tetracyclines		9		Tetracyclines	
10		Other antibiotics		10		Other antibiotics	
11		Local anesthetics		11		Local anesthetics	
12		Latex		12		Latex	
13		Shellfish		13		Shellfish	
14		Eggs		14		Eggs	
15		Nuts		15		Nuts	
16		Wheat		16		Wheat	
17		Other allergens		17		Other allergens	

**Immunization**

No.	Yes	No	Substance	Exposure	Status
1			Tetanus		
2			Diphtheria		
3			Polio		
4			MM2 (Measles, Mumps, Rubella)		
5			MM4 (Measles, Mumps, Rubella, Tetanus)		
6			MM4V (Measles, Mumps, Rubella, Tetanus, Varicella)		
7			MM4V (Measles, Mumps, Rubella, Tetanus, Varicella)		
8			MM4V (Measles, Mumps, Rubella, Tetanus, Varicella)		
9			MM4V (Measles, Mumps, Rubella, Tetanus, Varicella)		
10			MM4V (Measles, Mumps, Rubella, Tetanus, Varicella)		
11			MM4V (Measles, Mumps, Rubella, Tetanus, Varicella)		
12			MM4V (Measles, Mumps, Rubella, Tetanus, Varicella)		
13			MM4V (Measles, Mumps, Rubella, Tetanus, Varicella)		
14			MM4V (Measles, Mumps, Rubella, Tetanus, Varicella)		
15			MM4V (Measles, Mumps, Rubella, Tetanus, Varicella)		
16			MM4V (Measles, Mumps, Rubella, Tetanus, Varicella)		
17			MM4V (Measles, Mumps, Rubella, Tetanus, Varicella)		
18			MM4V (Measles, Mumps, Rubella, Tetanus, Varicella)		
19			MM4V (Measles, Mumps, Rubella, Tetanus, Varicella)		
20			MM4V (Measles, Mumps, Rubella, Tetanus, Varicella)		
21			MM4V (Measles, Mumps, Rubella, Tetanus, Varicella)		
22			MM4V (Measles, Mumps, Rubella, Tetanus, Varicella)		
23			MM4V (Measles, Mumps, Rubella, Tetanus, Varicella)		
24			MM4V (Measles, Mumps, Rubella, Tetanus, Varicella)		
25			MM4V (Measles, Mumps, Rubella, Tetanus, Varicella)		
26			MM4V (Measles, Mumps, Rubella, Tetanus, Varicella)		
27			MM4V (Measles, Mumps, Rubella, Tetanus, Varicella)		
28			MM4V (Measles, Mumps, Rubella, Tetanus, Varicella)		
29			MM4V (Measles, Mumps, Rubella, Tetanus, Varicella)		
30			MM4V (Measles, Mumps, Rubella, Tetanus, Varicella)		
31			MM4V (Measles, Mumps, Rubella, Tetanus, Varicella)		
32			MM4V (Measles, Mumps, Rubella, Tetanus, Varicella)		
33			MM4V (Measles, Mumps, Rubella, Tetanus, Varicella)		
34			MM4V (Measles, Mumps, Rubella, Tetanus, Varicella)		
35			MM4V (Measles, Mumps, Rubella, Tetanus, Varicella)		
36			MM4V (Measles, Mumps, Rubella, Tetanus, Varicella)		
37			MM4V (Measles, Mumps, Rubella, Tetanus, Varicella)		
38			MM4V (Measles, Mumps, Rubella, Tetanus, Varicella)		
39			MM4V (Measles, Mumps, Rubella, Tetanus, Varicella)		
40			MM4V (Measles, Mumps, Rubella, Tetanus, Varicella)		
41			MM4V (Measles, Mumps, Rubella, Tetanus, Varicella)		
42			MM4V (Measles, Mumps, Rubella, Tetanus, Varicella)		
43			MM4V (Measles, Mumps, Rubella, Tetanus, Varicella)		
44			MM4V (Measles, Mumps, Rubella, Tetanus, Varicella)		
45			MM4V (Measles, Mumps, Rubella, Tetanus, Varicella)		
46			MM4V (Measles, Mumps, Rubella, Tetanus, Varicella)		
47			MM4V (Measles, Mumps, Rubella, Tetanus, Varicella)		
48			MM4V (Measles, Mumps, Rubella, Tetanus, Varicella)		
49			MM4V (Measles, Mumps, Rubella, Tetanus, Varicella)		
50			MM4V (Measles, Mumps, Rubella, Tetanus, Varicella)		

Prepared, For Life.

# Youth Form



SENECA WATERWAYS COUNCIL BOY SCOUTS OF AMERICA Summer Camp Youth Medication Permission Form																							
Last Name: _____		First Name: _____		Unit: _____																			
Street: _____			City/State: _____																				
Phone: _____		Date of Birth: _____		Weight: _____																			
Oral Agents	Dosage	Indication and Schedule	Camper Health Care Provider		Comments																		
			Approval	Initials																			
Diphenhydramine (such as Benadryl)	<90# 25 mg ≥ 90# 50 mg	Allergic Reaction/ Hay Fever every six hours as needed for 24 hours	Yes	No																			
Maalox	30 cc	Indigestion/ heartburn once	Yes	No																			
Milk of Magnesia	30 cc	Constipation daily twice as needed	Yes	No																			
Robitussin	Per label instructions	Colds every six hours as needed	Yes	No																			
Acetaminophen (such as Tylenol)	15 mg/kg (below)	Fever, Headache, Pain Control, Toothache every 4 hours as needed	Yes	No																			
Ibuprofen (such as Motrin)	200 mg	Fever, Pain every 6 hours as needed	Yes	No																			
Ibuprofen Liquid (such as Motrin)	5 ml per wt (below)	Fever, Pain every 6 hours as needed	Yes	No																			
Topical Agents	Dosage	Indication and Schedule	Camper Health Care Provider		Comments																		
			Approval	Initials																			
Tripe Antibiotic (such as Neosporin)	Per label instructions	Wound care (scrapes, poison ivy) twice daily as needed	Yes	No																			
Pramoxine (such as Caladryl)	Per label instructions	Insect Bites/ Poison Ivy twice daily as needed	Yes	No																			
Miconazole Powder (such as Desenex)	Per label instructions	Athletes Foot twice daily as needed	Yes	No																			
Clotrimazole (such as Lotrimin)	Per label instructions	Jack Itch three times daily	Yes	No																			
<table border="1"> <thead> <tr> <th colspan="3">Acetaminophen (Tylenol)</th> <th colspan="3">Ibuprofen (Motrin)</th> </tr> <tr> <th>Weight</th> <th>30-75 lbs</th> <th>76-150 lbs</th> <th>151-100 lbs</th> <th>101-150 lbs</th> <th>151-200 lbs</th> </tr> </thead> <tbody> <tr> <td>Dosage</td> <td>325 mg</td> <td>500 mg</td> <td>500 mg</td> <td>500 mg</td> <td>500 mg</td> </tr> </tbody> </table>						Acetaminophen (Tylenol)			Ibuprofen (Motrin)			Weight	30-75 lbs	76-150 lbs	151-100 lbs	101-150 lbs	151-200 lbs	Dosage	325 mg	500 mg	500 mg	500 mg	500 mg
Acetaminophen (Tylenol)			Ibuprofen (Motrin)																				
Weight	30-75 lbs	76-150 lbs	151-100 lbs	101-150 lbs	151-200 lbs																		
Dosage	325 mg	500 mg	500 mg	500 mg	500 mg																		
OTC Medication	Dosage / Route	Indication and Schedule	Camper Health Care Provider		Comments																		
			Self-Administration	Initials																			
			Yes	No																			
			Yes	No																			
Health Care Provider: _____ Phone: _____																							
Address: _____ License: _____																							
Signature: _____ Date: _____																							
<p>I hereby give permission for my son/ daughter receive over the counter and prescription medications as indicated by my child's Health Care Provider and request self-administration of prescription drugs. In addition, I give permission to carry and use sunscreen or insect repellent at camp and to use it throughout the day. If my child needs help re-applying sunscreen or insect repellent, I give permission for camp staff to provide my child with assistance if he/she requests it.</p>																							
Signature of Parent or Guardian: _____ Date: _____																							



# DIETARY NEEDS

<https://scoutingevent.com/397-csac2026>

[cutler-food@senecawaterways.org](mailto:cutler-food@senecawaterways.org)



## Camp Food Accommodation Request

The food service departments at the Seneca Waterways Council Scout Camps are committed to ensuring that all participants have the best meals that we provide. We understand that many people are allergic to the foods we use every day in our kitchens or have religious dietary requirements. Our food service team will make all reasonable accommodations for our campers.

**Please select the camp being attended:** Dates / Session Attending Camp: \_\_\_\_\_  
Massawepie Scout Camps: \_\_\_\_\_ Cub Scout Adventure Camp: \_\_\_\_\_

National Youth Leadership Training (NYLT): \_\_\_\_\_ Eagle Flight: \_\_\_\_\_

Participant's name: \_\_\_\_\_ Unit: \_\_\_\_\_

Council: \_\_\_\_\_ District: \_\_\_\_\_

Home contact person: \_\_\_\_\_ Phone: \_\_\_\_\_

### Food Allergies/Religious Restrictions

Describe: \_\_\_\_\_

\_\_\_\_\_

How severe is the allergy?  Moderate  Strong  Severe

Any other information that we need to know?

### Religious Dietary Requirements:

What can we do to help accommodate your needs?

**Please return this form no later than two weeks prior to your arrival at camp.**

Please e-mail forms to:

Summer Program	Contact Address
Massawepie Scout Camps / Adirondack Treks	<a href="mailto:masc-food@senecawaterways.org">masc-food@senecawaterways.org</a>
Cub Scout Adventure Camp / Explorer First Responder Camp / Eagle Flight	<a href="mailto:cutler-food@senecawaterways.org">cutler-food@senecawaterways.org</a>
National Youth Leadership Training (NYLT)	<a href="mailto:nylt-food@senecawaterways.org">nylt-food@senecawaterways.org</a>

Questions? Please give us a call at  
SWC Camping Department - 585-241-8545  
Camp Cutler - 585-374-8656  
Massawepie Scout Camps - 518-359-2281

# What You Need to Prepare

## Recommended Packing List:

- Uniform Class A Shirt\*
- Swimsuit & goggles
- Poncho or Raincoat
- Personal Hygiene Items\*\*
- Pants/Slacks/Shorts
- Underwear & Socks
- Pajamas
- Flashlight/Headlamp
- Towels
- Water Bottle
- Sweater or Jacket
- Mosquito Repellent
- Sunscreen
- Closed Toed Shoes (2 Pairs)\*\*\***
- Small Backpack/ Day pack
- Spending Money for Trading Post
- Sleeping Bag & Pillow
- Whittling Chip
- BSA Med Forms

\*The uniform is highly recommended, but no Cub Scout is denied attendance because he does not own a uniform

\*\*Adult and youth have separate shower facilities so please plan accordingly

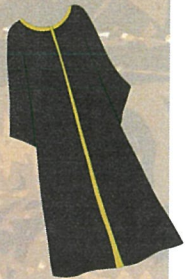
\*\*\*Good walking shoes are 100% necessary, it is recommended to have a pair of crocs or slip on CLOSED TOE shoes for before/after swimming and bathing. **NO OPEN TOED SHOES WILL BE PERMITTED EXCEPT ON THE POOL DECK AND BEACH.**

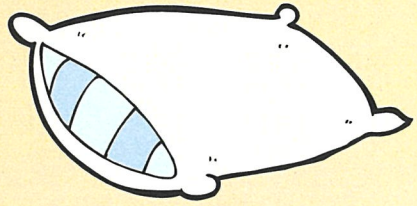
## Optional Items:

- Lunch for check in day
- Mosquito Netting
- Binoculars
- Matches (adults only)
- Cub Scout Knife
- Camera
- Watch
- Sports Equipment For Free Time
- Fishing Pole and Tackle Box
- Lawn Chairs
- Stuffed friend
- Ear Protection

## What NOT to bring!

- Open Toed Shoes
- Bikes/Scooters
- Alcoholic Beverages
- Pets
- Fireworks
- Weapons
- Aerosol Cans



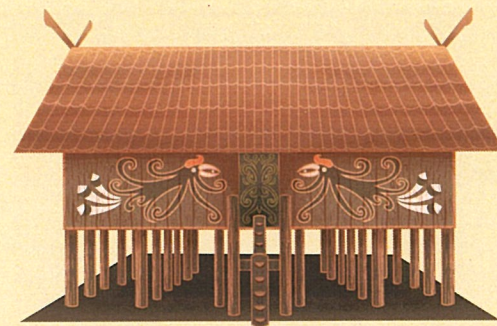
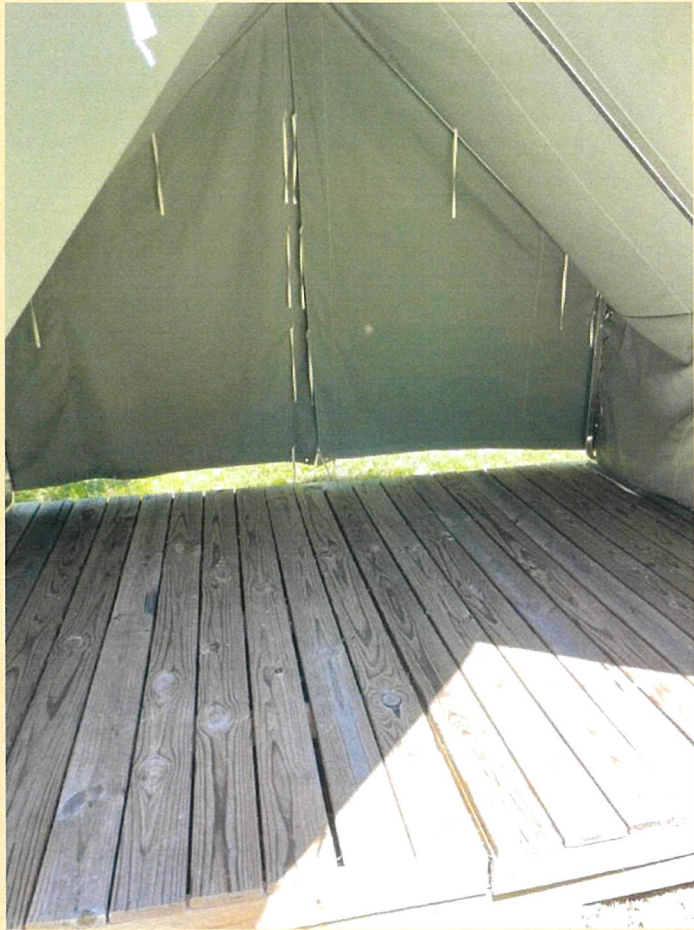


# Sleeping Accommodations

- Separate accommodations for youth males, youth females, adult males, and adult females
- Youth may not share accommodations with other youth with a two year age difference or more
- Food cannot be stored in sleeping quarters, unless you want to be visited by a furry friend
- Please use designated storage areas.
  - Castle/Fort/High Seas- Village Kitchen
  - Viking/Mountain Scout- Dining Hall Kitchen









*Special Accommodations*

# The Sorting and Arrival Process

**Check In**    11am - 12pm    Mountain Scout/  
Medieval Castle

12pm - 1pm    Pioneer Fort/  
Viking Longhouse

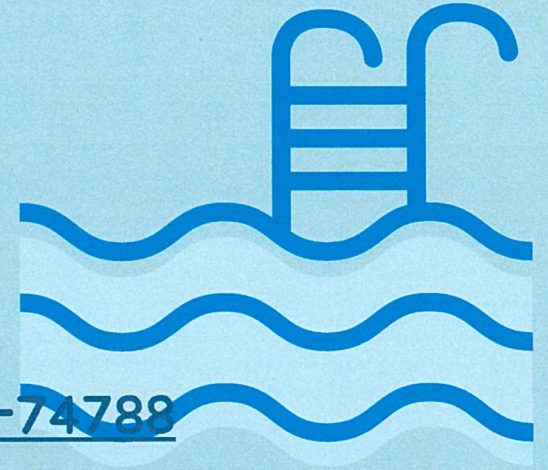
1pm - 2pm    High Seas

## **Procedure**

- Arrive during scheduled check-in by village
- Park in lower lot, follow guidance of lot attendant
- Unload gear onto designated table under lower pavilion
- Have one representative from Pack check in with:
  - Medical Forms, Pack Roster, Medications
- Keep daypack with swim suit, towel, water bottle with you on wagon



# Swim Checks and Swimmer Levels



- Option A - Before Camp <https://scoutingevent.com/397-74788>
- Option B - At Camp after check in
- Swimmer's Test/Blue Band - Jump feet first into deep end, level off, begin swimming. Swim 75 yards in a strong manner, then swim 25 yards using resting backstroke. Float on your back for one minute.
- Beginner's Test/Red Band - Jump feet first into deep end, level off, begin swimming. Swim 50 feet on the surface.
- Non-Swimmer/White Band - anyone unable to complete a swimmer or beginner test. Non-swimmers will be limited to the slip and slide.

# Boating

- Row Boat - white or red band adult or youth WITH blue band ADULT
- Canoe and Corcl - blue band youth/adult

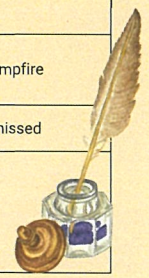


We encourage all adults to get their swim test, so they are able to participate with youth, and youth are not prevented from boating if they are white bands.



# Class Schedule

Time	Sunday/Thursday	Time	Monday/Friday	Time	Tuesday/Saturday
		6:30am - 7:00am	Polar Bear Swim	6:30am - 7:00am	Polar Bear Swim
		7:45am	Flags	7:45am	Flags
		8:00am - 8:45am	Breakfast	8:00am - 8:45am	Breakfast
		9:00am - 10:00am	Rank Activity	9:00am - 10:00am	Rank Activity
		10:05am - 11:05am	Rank Activity	10:05am - 11:05am	Rank Activity
11:00 am-12 pm	<b>Check-In Blocks</b>	11:10am - 12:00pm	Village Time	11:10am - 12:00pm	Village Time
12pm to 1 pm		12:15pm - 1:00pm	Parade Field and Lunch	12:15pm - 1:00pm	Parade Field and Lunch
1 pm - 2pm		1:00pm - 2:00pm	Siesta	1:00pm - 2:00pm	Siesta
2pm - 2:30pm	<b>Extra Time</b>	2:05pm - 3:05pm	Rank Activity	2:05pm - 3:05pm	Rank Activity
2:40-3:30	<b>Block 1</b>	3:15pm - 4:10pm	<b>Open Program</b>	3:15pm - 4:10pm	<b>Open Program</b>
3:40-4:30	<b>Block 2</b>				
4:40-5:30	<b>Block 3</b>	4:20pm - 5:15pm	<b>Open Program</b>	4:20pm - 5:15pm	<b>Open Program</b>
5:45pm	Flags	5:30pm	Flags	5:30pm	Flags
5:45pm - 6:30pm		5:45pm - 6:30pm	Dinner	5:45pm - 6:30pm	Dinner
6:00pm - 7:00pm	Dinner	6:45pm - 7:45pm	<b>Open Program</b>	6:30pm - 7:00pm	Closing Campfire
7:15pm - 7:45pm	Scouts Own Service				
8:00pm	Opening Campfire	8:00pm - 9:00pm	<b>Village Time and Campfire</b>	7:15pm	Camp Dismissed
9:15pm	Cubmaster/Leader Mtg				
10:00pm	Lights Out	10:00pm		Lights Out	



# Day 1 Blocks

	High Seas	Medieval Castle	Viking Longhouse	Pioneer Fort	Mountain Scout
Block 1 2:40pm - 3:30pm	Village Orientation	Boating	Shooting Sports	Archery	Boating
Block 2 3:40pm - 4:30pm	Archery	Village Orientation	Boating	Boating	Shooting Sports
Block 3 4:40pm - 5:30pm	Boating	Archery	Village Orientation	Village Orientation	Village Orientation

<i>Rank Based Schedule</i>		Tiger	Wolf	Bear	Webelos	AOL
Day 2	9:00am - 10:00am	Archery	Finding Your Way	Hike - Balancing Bears	Earth Rocks	Hike - Into The Woods
	10:05am - 11:05am	Tigers in the Water OR Tiger-iffic	Archery	A Bear Goes Fishing	Hike - Tech on the Trail	
	2:05pm - 3:05pm	Sky is the Limit	Paws For Water OR Paws For Skill	Whittling	Chef's Knife	Fishing

Rank Based Schedule		Tiger	Wolf	Bear	Webelos	AOL
Day 3	9:00am - 10:00am	Hike - Champions for Nature	Digging in the Past	Salmon Run OR Baloo the Builder	Catch the Big One	BB Gun
	10:05am - 11:05am	Fish On	Hike - Spirit of the Water	Forensics	BB Gun	Swimming OR Into the Wild
	2:05pm - 3:05pm	Curiosity, Intrigue & Magical Mysteries	A Wolf Goes Fishing	BB Gun	Aquanaut OR Build It	Mud Run

# Open Program

**THIS PAGE IS UNDER CONSTRUCTION!!!!**

Please note that the open program schedule is still being finalized and will be determined based on staffing. We are working hard to ensure we offer a variety of fun and engaging activities for all participants. As we get closer to camp, we will provide a more detailed schedule. Thank you for your understanding and patience as we make sure everything is in place for an exciting camp experience!

## **Open Programs:**

**Boating  
Sponge Wars  
Archery  
Shooting Sports  
Sports  
Bouldering  
Swimming  
Nature/STEAM  
Gaga  
Quidditch**

# Hikes



Wizarding School



Houses



# The Village Cup



# Point System

- Scout Spirit (daily) – up to +50 points
- Campfire Participation – +25 points
- Clean Campsite / Village Inspection – up to +25 points
- First Village to Flags (each meal) – +25 points
- All Scouts Present at Flags (per village) – +10 points
- Meal Chant Winner (each meal) – +20 points
- Dining Hall Behavior (each meal) – up to +15 points
- Lunch Competition Winner (daily) – +30 points
- Winning Organized Competitions – +25–50 points
- Participation in Open Program Activities – +10 points per activity
- Random Acts of Kindness – +10–25 points
- Helping Another Village – +20 points
- Outstanding Leadership (youth or adult) – +15 points
- Staff Recognition ('Caught Being Awesome') – +10 points



## AOL Week



Session 6-7  
July 23<sup>rd</sup> - 28<sup>th</sup>



### Things To Know:

- Week long program for AOL's
- Two overnight outposts
- Multiple meals away from camp
- Specialized programming

### Things To Bring:

- Campers will need to bring their own tents and mess kit
- Medical form C will be needed, as well as A, B1, B2



**AOL Week 7/23/26 - 7/28/26**

Time	Thursday	Time	Friday	Time	Saturday	Time	Sunday	Time	Monday	Time	Tuesday
		6:30am - 7:00am	Polar Bear Swim							6:30am - 7:00am	Polar Bear Swim
		7:45am	Flags	7:30am - 8:30am	Breakfast	7:30am - 8:30am	Cold Breakfast	7:30am - 8:30am	Breakfast	7:45am	Flags
		8:00am - 8:45am	Breakfast							8:00am - 8:45am	Breakfast
		9:00am - 9:30am	Pack Up Gear	8:30am - 9:30am	Pack Up	8:45pm - 9:45pm	Swimming	8:30am - 9:30am	Pack Up	9:00am - 10:00am	Rank Activity : BB Gun
		9:30am - 10:15am	Personal First Aid Kit								
				9:30am - 11:30am	Hike: Into the Woods Part 1	10:00am - 11:00am	Brunch With The Staff	9:30am - 12:00pm	Hike: Into the Woods Part 2	10:05am - 11:05am	Rank Activity: Swimming or Into the Wild
11:00am - 12:00 pm	Check-In Blocks					11:00am - 11:30am	Pack Up For Outpost			11:10am - 12:00pm	Village Time
12:00pm - 1:00 pm				12:15pm - 1:00pm	Parade Field and Lunch			12:15pm - 1:00pm	Parade Field and Lunch	12:15pm - 1:00pm	Parade Field and Lunch
1:00pm - 2:00pm				1:00pm - 2:00pm	Siesta			1:00pm - 2:00pm	Boating	1:00pm - 2:00pm	Siesta
1:40pm- 2:40pm	BB Range							2:05pm - 3:05pm	Siesta	2:05pm - 3:05pm	Rank Activity: Mud Run
2:50pm- 5:30pm	AOL Week Bonding Time! @Mountain Scout			2:00pm- 5:20pm	Conservation Project, prebuild fire and village activities with remainder time			3:15-4:10pm	Open Program	3:15pm - 4:10pm	Open Program
		3:00pm-4:00pm	Set up camp and get settled								
5:45pm	Flags	4:00pm - 5:00pm	Estimations at Campsite	5:30pm	Flags			4:20pm-5:15pm	Open Program	4:20pm - 5:15pm	Open Program
6:00pm - 7:00pm	Dinner	5:00-7:00pm	Make Dinner, Dessert	5:45pm - 8:30pm	Dinner			5:30pm	Flags	5:30pm	Flags
7:15pm - 7:45pm	Scouts Own Service			6:35pm - 7:35pm	Archery			5:45pm - 8:30pm	Dinner	5:45pm - 8:30pm	Dinner
8:00pm	Opening Campfire	7:00pm - 9:00pm	Knife Safety and Whittling project	7:45pm - 8:15pm	Gaga or Sports			6:45pm - 7:45pm	Open Program	6:30pm - 7:00pm	Campfire
9:15 pm	Cubmaster/Leader Mtg	9:00pm - 10:00pm	Get settled	8:30pm - 9:00 pm	Campfire at Mountain Scout, S'Mores and skits	5:00pm - 10:00pm	Make Dinner, Dessert, 1 hour rest time, then Champions of Nature elective			7:15pm	Camp Dismissed
10:00pm	Lights Out	10:00pm	Lights Out	10:00pm	Lights Out	10:00pm	Lights Out	8:00pm - 9:00pm	Village Time and Campfire		
				10:00pm	Lights Out			10:00pm	Lights Out		



**Cub Scout Adventure Camp - A Day in the Life of a Cub Scout**  
Seneca Waterways Council

# A DAY IN THE LIFE AT **CUB SCOUT ADVENTURE CAMP!**



[ScoutsROC.org](http://ScoutsROC.org)

Watch on YouTube



# JOIN CAMP STAFF

WE'RE LOOKING FOR PASSIONATE, ENERGETIC  
INDIVIDUALS!

GAIN VALUABLE EXPERIENCE, MAKE NEW FRIENDS, AND  
BE PART OF AN EXCITING TEAM!

APPLY NOW AND BE PART OF THE ADVENTURE!

MASSAWEPIE SCOUT CAMPS, TUPPER LAKE NY

JUNE 28TH - AUGUST 19TH

POSITIONS NEEDED:  
AQUATICS DIRECTOR 21+  
COMMISSIONERS 18+  
COMMISSARY DIRECTOR 18+  
HEALTH LODGE ASSISTANT 18+  
DINING HALL STEWARD 18+  
TREK GUIDES 18+  
OUTDOOR SKILLS DIRECTOR-18+  
-SPORTS/CYCLING DIRECTOR- 18+  
-LIFEGUARDS, 16+  
-CAMP PROGRAM STAFF 15+  
-COUNSELOR IN TRAINING- 14-15



CUB SCOUT ADVENTURE CAMP, NAPLES NY

JUNE 27TH - AUGUST 14TH

POSITIONS NEEDED:  
HEALTH DIRECTOR 18+  
VILLAGE DIRECTOR 18+  
CAMP PROGRAM STAFF 15+  
QUARTERMASTER 18+  
RANGE DIRECTOR 18+  
LIFEGUARDS 16+  
BUSINESS MANAGER 18+  
TRADING POST CLERK 15+  
COUNSELOR IN TRAINING 14-15



**Scouting America**  
Seneca Waterways Council



It is our choices, Harry,  
that show what we truly are,  
far more than our abilities."

- Albus Dumbledore