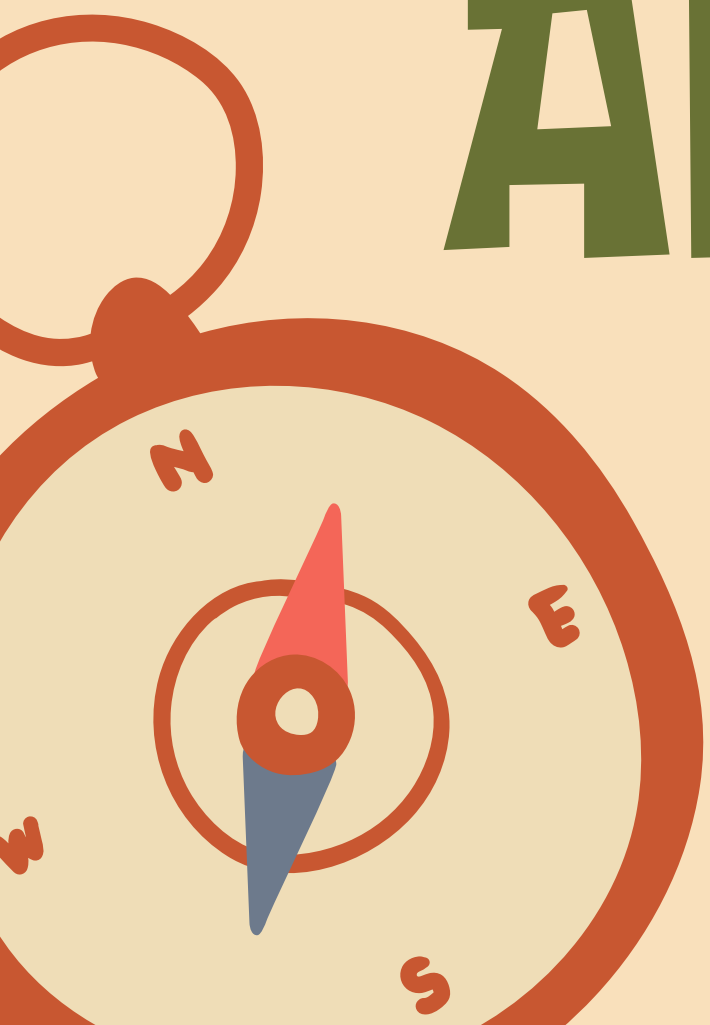




Camp Cutler

# CUB SCOUT ADVENTURE CAMP

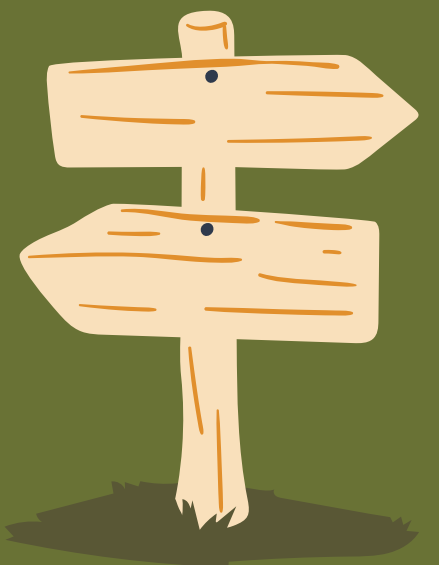


# LEADERSHIP TEAM

*Abigail Post*  
PROGRAM DIRECTOR



*Sara Hardy*  
CAMP DIRECTOR





# ABOUT CSAC



Cub Scout Adventure Camp is a three day experience at the beautiful Camp Cutler in Naples NY. Scouts moving up to the rank of Tiger - AOL have the unique opportunity to camp in themed villages with their pack and/or parents.

CSAC offers ten program areas including swimming, boating, shooting sports, archery, sports, nature, village themed activities, bouldering, fishing, and our amazing science fair!

## VILLAGES

Viking  
Longhouse

Mountain  
Scout

Medieval  
Castle

Pioneer  
Fort

High Seas



## PROGRAMS

Bouldering

Shooting Sports

Science Fair

Village Activities

Fishing

Boating

Nature

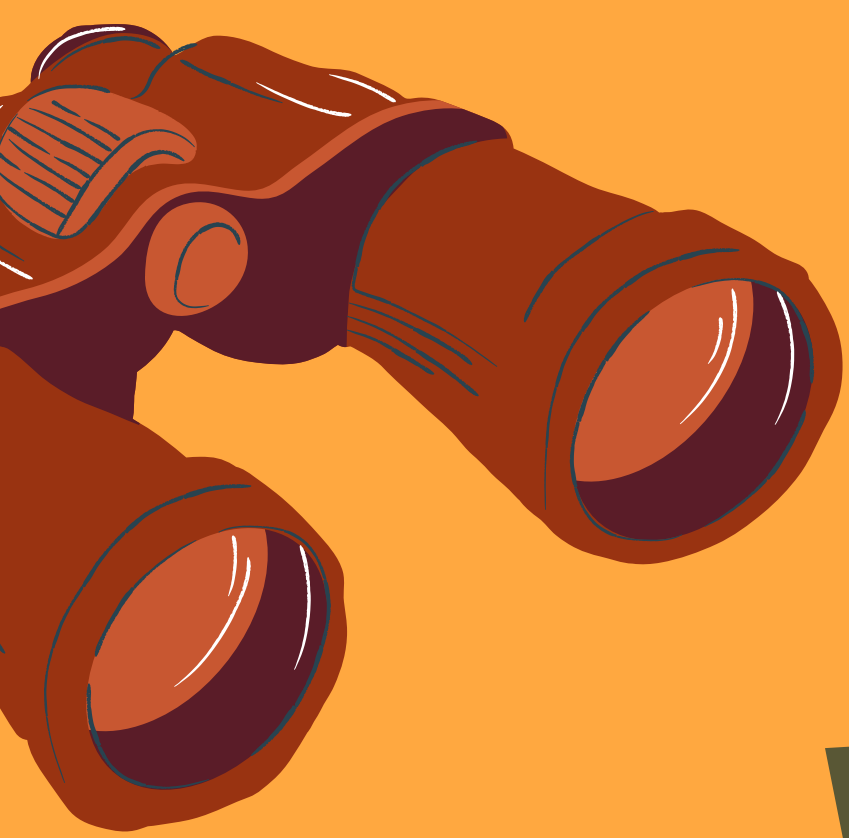
Sports

Swimming

Archery



# AROUND THE WORLD



# DESTINATIONS

## VILLAGES

-  Castle - Germany
-  Fort - Australia
-  Viking - Norway
-  High Seas - Puerto Rico
-  Mountain Scout - Canada

## PROGRAM AREAS

-  Waterfront - Madagascar
-  Sports - Italy
-  Nature - Brazil
-  Fishing - Indonesia
-  RATA - United Kingdom
-  Pool - Antarctica







# iTiNERARy

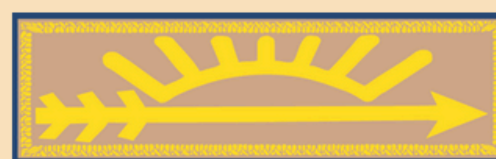
Time	Sunday/Thursday	Time	Monday/Friday	Time	Tuesday/Saturday
		6:30am - 7:00am	Polar Bear Swim	6:30am - 7:00am	Polar Bear Swim
		7:45am	Flags	7:45am	Flags
		8:00am - 9:00am	Breakfast	8:00am - 9:00am	Breakfast
		9:10am - 10:10am	Rank Activity	9:10am - 10:10am	Rank Activity
		10:20am - 11:20am	Rank Activity	10:20am - 11:20am	Rank Activity
11:00 am-12 pm	Check-In Blocks	11:30am - 12:45pm	Parade Field and Lunch	11:30am - 12:30pm	Parade Field and Lunch
12pm to 1 pm		12:45pm - 1:45pm	Siesta	12:30pm - 1:30pm	Siesta
1 pm - 2pm		1:50pm - 2:50pm	Rank Activity	1:35pm - 2:35pm	Rank Activity
2:10-3:10	Block 1			2:45pm - 3:30pm	Village Time
3:20-4:20	Block 2	3:00pm - 4:00pm	Open Program	3:30pm - 4:15pm	Open Program
		4:10pm - 5:10pm	Open Program		
4:30-5:30	Block 3	5:20pm	Flags	5:20pm	Flags
		5:30pm - 6:30pm	Dinner	5:30pm - 6:15pm	Dinner
6:00pm - 7:00pm	Dinner	6:45pm - 7:45pm	Village Time	6:15pm - 7:00pm	Campfire
7:15pm - 7:45pm	Scouts Own Service			7:15pm	Camp Dismissed
8:00pm	Opening Campfire	8:00pm - 9:30pm	Movie Night		
9:00pm	Cubmaster/Leader Mtg				
10:00pm	Lights Out	10:00pm	Lights Out		



COMPLETE

# ADVENTURES

EARNED



WHITTling

RANK BASED HIKES

UP TO 6 ELECTIVES!

RATA

**OPEN  
PROGRAM**

**2 PER DAY**



A new  
Open Program  
signup procedure  
will be released  
at our April 6th  
Leader's Meeting



# AOL WEEK



## Things to Know

- Newly redesigned week long program for AOL's
- Two overnight outposts
- Multiple meals away from camp
- Specialized programming

## Things to Bring

- Campers will need to bring their own tents
- Medical form C will be needed, as well as A, B1, B2

**SESSION 6-7**  
**JULY 24 - JULY 29**



Campsite Alignment Matrix																					
Cub Scout Adventure Camp																					
				07-06 Session 1			07-10 Session 2			07-13 Session 3			07-17 Session 4			07-20 Session 5			07-24 Session 6		
Campsite	Max			Unit	Y	A	Unit	Y	A	Unit	Y	A	Unit	Y	A	Unit	Y	A	Unit	Y	A
	Unit	Low	High																		
High Seas	99	0	48	137B WE	6	6	69F GL	16	10	332F ET	12	12	48F WG	15	5	68B HF	5	5	233F HF	9	9
				601B WNYSC	15	14	568F WNYSC	13	6				203F HF	5	5			463F WE	15	15	
													330F WG	9	9						
Medieval Castle	99	0	44	86F WG	20	20	50B GL	27	23				225F ET	23	21	163F WE	8	8	273F ET	26	18
Mountain Scout Tent Site	6	0	60							332F ET	3	3	330F WG	6	6	163F WE	8	8			
Pioneer Fort	99	0	44				10F ET	20	20				67F GL	22	22				362F ET	25	25
Viking Longhouse Village	3	0	40										25F GL	8	8				178F WG	6	6
																			277F WG	9	8
Totals:					41	40		76	59		15	15		88	76		21	21		90	81

				07-27 Session 7			07-31 Session 8															
Campsite	Max			Unit	D/C	Y	A	Unit	D/C	Y	A											
	Unit	Low	High																			
High Seas	99	0	48	67F ET		24	15	262F WE		12	8											
								4076F GFC		2	2											
Medieval Castle	99	0	44					291F ET		10	10											
Mountain Scout Tent Site	6	0	60					29F GL		7	7											
								160B GFC		6	6											
Pioneer Fort	99	0	44					126F WE		24	24											
Viking Longhouse Village	3	0	40																			
Totals:						24	15			61	57		0	0		0	0		0	0		0



# RESERVATIONS AND FEES

## **RATES:**

**REGULAR RATE - \$275**

**EARLY BIRD RATE - \$250**

**ADULT RATE \$75**

**DO YOU HAVE MORE THAN 1 CHILD ATTENDING  
CUB SCOUT ADVENTURE CAMP?**

**EMAIL [CSAC-DIRECTOR@SENECAWATERWAYS.ORG](mailto:CSAC-DIRECTOR@SENECAWATERWAYS.ORG)  
FOR \$25 OFF ADDITIONAL SIBLINGS!**

## **CAMP FEE SCHEDULE:**

- **CAMPER DEPOSITS MUST BE PAID IN FULL BY MARCH 28, 2024**
- **EARLY BIRD FEE MUST BE PAID IN FULL BY APRIL 25, 2024**
- **SCOUTS WHO MISS THE EARLY BIRD DEADLINE MUST HAVE FEES PAID IN FULL BY JUNE 30, 2024**
- **YOUTH WHO HAVE JOINED SCOUTING IN THE SPRING (FEB-JUNE) ARE ELIGIBLE FOR EARLY BIRD RATES. BE SURE TO SELECT "NEW SCOUT IN SPRING"**

# WHAT YOU NEED TO PREPARE



YPT



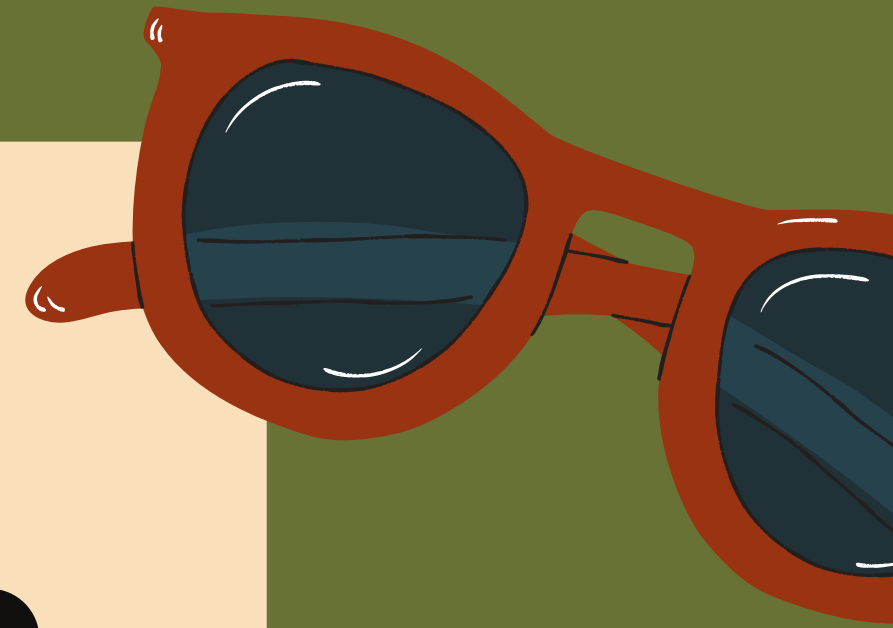
Food Service



Medical Forms



Swim Check





M.D. PACK 233



### Great Service

I really enjoyed our first time here. Every staff member had such unique personalities and we could tell how passionate they are about their roles. They were all amazing and we had a great time!



G.S. 163



### Individualized Program

I really like the approach of earning the badges and then picking individual open programs.



A.F. 2005



### Best Year Yet

We are super impressed with the staff! We loved that the staff was so interactive! By far the BEST year camping yet!!!



# TRIP REVIEWS

**"THE WORLD IS TOO BIG TO  
STAY IN ONE PLACE, AND  
LIFE IS TOO SHORT TO DO  
JUST ONE THING."**

