

February 7-9, 2025 USDA Forest Service Prosser Reservoir, CA
Registration available at
<https://Scoutingevent.com/329-Klondike>



**Immediate Emergencies
911**

Camp Director
Mark Ports
775-934-4672

Camp
Professional
Doug Ramsay
775-444-4536

Camp OA Chief
Micah Ports

Location:
Prosser Family Campground
39.377610, -120.162556
(Same as last year, map page 2)

Google Map Link:

<https://maps.app.goo.gl/ev2VHo9grqkWwH4P9>

Revised 1/10/25

Arrival: Please check in at registration to be given directions to your campsite. Any unexpected changes to activity stations, program areas, etc. will be given in writing to the adult and youth leaders on your arrival.

Med Forms: All participants (youth and adult) should have a BSA Med Form, Parts A & B filled out and present. Forms will be checked at HQ at registration.

Additional opportunity for older Scouts: Scouts 1st Class and above may sign up to take the Search and Rescue Merit Badge before Klondike occurs. A lottery system will be used to select the participants, every effort will be made to ensure all interested Scouts have an opportunity. However, those Scouts participating in the Search and Rescue Merit Badge will not be participating with their unit in the rest of the programmed event.

Signups will be limited to 16 Scouts per session, each group will be broken out into an 8 person SAR team. We will run two scenarios north of the camping area.

Merit Badge Session A 9:30 -12 and Merit Badge Session B 1:00-3:30.

Scoutmasters will need to email their list of Scouts to Kevin Fromherz (kbfromherz@gmail.com) by January 25 for priority placement on the list. In the event there is more interest than space, a cap will be instituted on each unit. If your unit signs up by January 25 and there is space all interested Scouts will be given an opportunity to participate.

Scouts should be ideally First Class and above, be able to snowshoe up to a mile, and be willing to work as a team with other Scouts not from the same unit.

Scouts will need to complete the following prerequisites: bring a copy of the Merit Badge workbook with the answers filled out. A brief discussion will occur before and after, Scouts should be able to comfortably participate in the conversation. A blue card is required or an invite in Scoutbook.

Requirements 1, 2, 3, 4, 5, 6, and 10 will need to be completed prior to attending for a complete Merit Badge, a partial will be given if the requirements are not met.

Requirement 4: Based on the county that Prosser is located in.

Requirement 7: Each Scout needs to review UTM coordinates, basic map reading, and compass work. Scouts need to be able to place UTM coordinates on a provided map.

Scouts will need to locate a counselor to finish the badge if they receive a partial, Kevin has limited capacity to offer completion after the event, so Scouts are encouraged to show up ready to complete the badge. An exception will be granted for requirement 6.

The general program will follow this outline:

- Scouts will report to the check-in location by the start time with their ready packs. Radios and maps will be provided for the program. Scouts need to bring snowshoes; limited pairs may be available for loan. These will need to be requested ahead of time.
- Scouts will receive a briefing from the incident commander. Patrols will be provided key information to locate the missing person(s).
- Scouts will work as a team to map the last known location and create an incident action plan. Once the search area and plan are approved, Scouts will embark as a search team and attempt to locate the missing person(s).
- If located, Scouts will address the emergency situation, provide basic care, and make a medevac decision. Once the victim(s) are safely transported to advanced care, a debrief will be completed and the program will end.

Scouts can participate in the morning or afternoon program with their units.

Regular Camp Schedule:

Friday:

Check in: 4:00 -10:00 (Any late arrivals check-in in the morning)

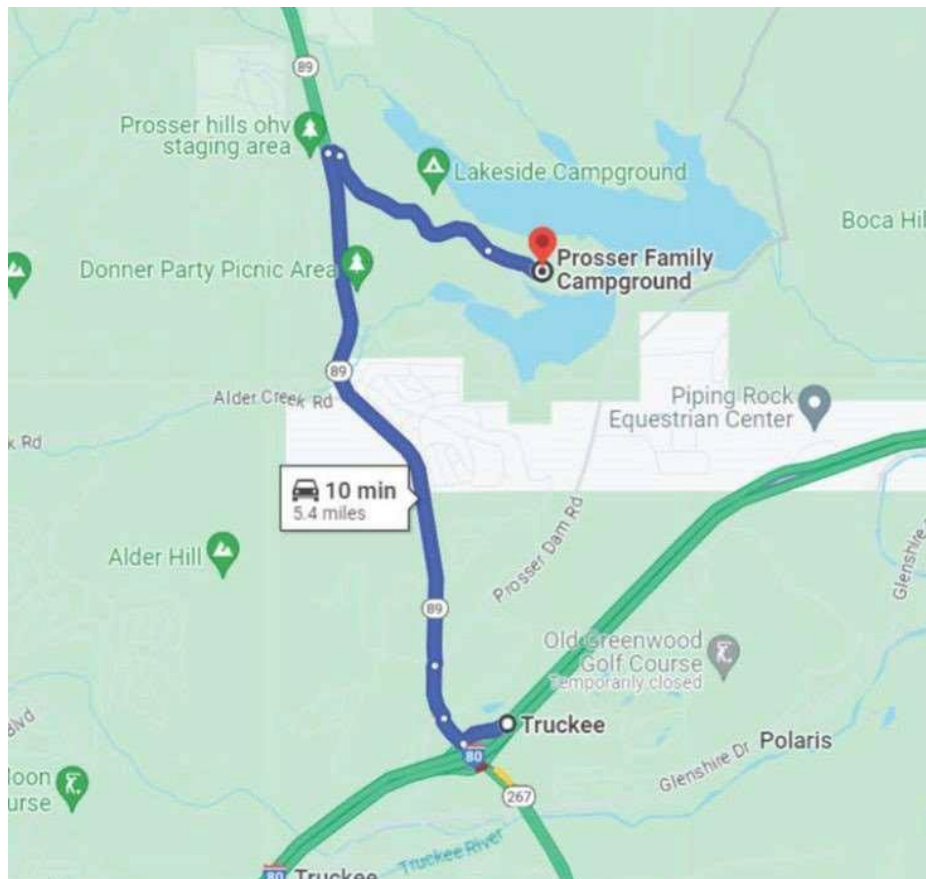
Cracker Barrel: 8:00-?

Jeremy on History Bonfire

Saturday: 7:00-8:00 Breakfast (at your campsite)
8:30 Flags/Meeting (at the flag)
9:00 Program Starts
9:00-10:00: Sled Race
10:00-11:00: Program Slot 1
11:00-12:00: Program Slot 2
12:00-12:30: Lunch as a group in Flag Area.
12:30-1:30: Program Slot 3
1:30-2:30: Program Slot 4
2:30-3:30: Program Slot 5
3:45- End Program
4:30- Closing Flags/Awards
(Units may decide to stay through the night to Sunday)

Sunday:

9:30: Scout's Own (Only official program)



Food: Troops will be responsible for their own food. For lunch on Saturday, please have a “to-go” lunch to eat together as a camp at the flag area. Staff will provide abundant hot water.

and cocoa for drinks and to keep warm. Scouts and units should be sure to bring what you need to eat, to eat on, and a cup for your drink.

Program Areas:

Units will rotate through five program areas and the sled race, for a total of six activities. The following is an overview of the program areas:

°Snow Snakes/Snowman:

Be Prepared to slide your Snow Snake the furthest! The basic design of a Snow Snake is to start with a 5' to 7' long stave that is roughly 1 1/4" square. The bottom is rounded and sanded smoothly. Several coats of varnish are applied to create a smooth, waterproof surface. The head of the "snake" is often given an upward turn and given extra weight. The whole thing is decorated however as the Patrol desires. Snow snake construction is limited only by your creativity. We will also provide Snow Snakes for Troops that haven't made their own. One bonus point will be awarded if you bring your own snake.

Units will also be asked to build a Snowman, judged by impartial judges, on your creativity and sticking to the theme of “Donner Party Rescue.”

°First Aid/Fire:

Units will be participating in First Aid and Rescue scenarios that can be accomplished by studying the Scout Book and Field Book. Units should be prepared to treat and transport a victim.

Units in this area will also be participating in a fire competition. Units will be asked to start a fire given the materials provided. The council will be providing the wood to ensure an even playing field. The more experience you have with starting fires in different scenarios, the better you will do!

°Azimuth Shoot:

For the azimuth shoot, units will be asked to accomplish various tasks with a compass like finding azimuths or measuring distances. Units must bring their own compasses; we will only have a small amount to loan out. Skills will be what is expected from map and compass work from the Scout Manual and Fieldbook. Note: this will not be an orienteering course that would count for advancement.

°Donner Party Rescue:

The big event, units will be expected to synthesize their Scouting knowledge to rescue the “Donner Party”. Units will need to travel through snow with their “Rescue Sled” to a location solved through map work, provide first aid to what the Donner Party may have required, light a fire to provide warmth, boil water for their medicinal cocoa, cook them food, and return them safely to “Sutter's Fort” Fire supplies and food ingredients will be provided. Units must bring a pot, and a frying pan they don't mind cooking over a fire/coals.

°Teamwork Challenge:

Units will be using their skills of working together to solve Scout-solvable problems. We can't tell you too much, but classic Scout teamwork games will be presented for your unit to solve. No extra materials will be needed from your unit.

°Sled Race:

Units will be racing a standard Klondike sled of your own design through a marked course as a timed event. A timed event will allow for units to not worry about collisions. Our staff will designate to you, the Scout that is required to be in the sled. Your unit can choose any number of your unit to help pull. The track will be there and back and so will have an equal amount of uphill and downhill sections.

Scoring system:

Sled Race: 1st place and the "Snowshoe Thompson Award" will be awarded to the unit that completes the sled race the fastest and achieves Honor status for the weekend. In the event the fastest unit does not achieve Honor status, the next fastest will be chosen, and so on.

Klondike Scoring: Program stations will have a scoring system that includes the skill portion of the activity, the ability to work and act as a Patrol, and maintaining the spirit of cheerfulness in the midst of adversity. Scores will be collected and compiled together and the top 1/3 of the units will be awarded an Honor designation, and every unit that participates will be given a token for their flag.



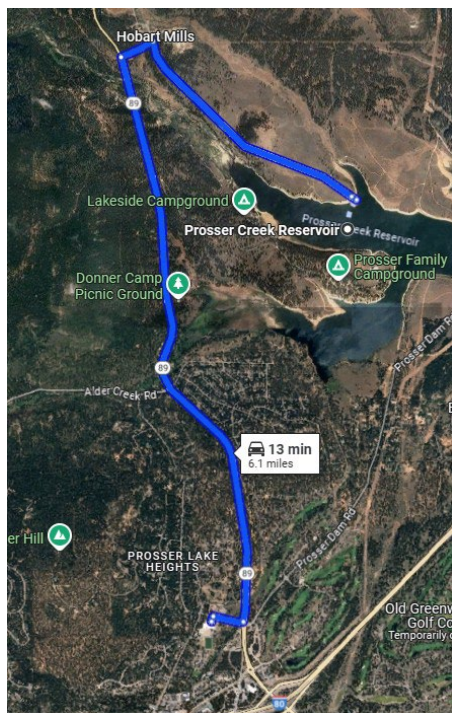
Emergency Plans:

Contacts:

<p>Emergency Call # 911</p> <p>TRUCKEE FIRE PROTECTION DISTRICT 530.582.7850</p> <p>Tahoe Forest Hospital 10121 Pine Ave, Truckee, CA 96160, United States 530-587-6011</p>	<p>Nevada County Sheriff's Department 10879 Donner Pass Rd, Truckee, California. 530-265-1471</p> <p>US Forest Service Truckee Ranger District 10811 Stockrest Springs Road Truckee CA 530-587-3558</p>
---	---

Individual emergencies will be relayed directly to the medical staff for treatment and care, and then notification to the Camp Director. All other emergencies will be relayed directly to the Camp Director who, with the consultation of the Staff Adviser and pertinent authorities, will make decisions for the health and safety of the campers.

In case of an emergency situation requiring the entire camp, blasts of loud devices will be made in groups of three, repeated indefinitely. Upon hearing the blasts, units should aid in passing the signal along by also making blasts of sounds in threes, such as honking car horns. Immediately send a representative from your unit to the flag area to receive further instructions. The rest of the unit should make their way to the flag area in a timely but safe fashion. Instructions will be delivered to the representatives that may intercept your unit with instructions if the emergency is particularly urgent, like volcanic eruption.



In case of evacuation, the designated rally point will be **Alder Creek Middle School Parking Lot** (10931 Alder Drive, Truckee CA) where all units must check in with the Camp Director before they can be dismissed, depending on

the situation. In case of non-emergent closure of the event (Weather makes it unsafe to continue and all Troops are asked to leave, for example) units must check out with the Camp Director and then may leave without going to the rally point.

Prosser Creek Reservoir
California 96161

- ↑ 1. Head northwest 203 ft
 - ↑ 2. Continue onto Old Hwy 89 1.7 mi
 - ← 3. Turn left onto Fibreboard Rd/Hobart Mills Rd 0.2 mi
 - ← 4. Turn left onto CA-89 S 3.9 mi
 - ↻ 5. At the traffic circle, take the 1st exit onto Alder Dr 0.2 mi
 - ← 6. Turn left 187 ft
 - ← 7. Turn left 3 ft
- Destination will be on the right

Alder Creek Middle School
10931 Alder Dr, Truckee, CA 96161