

ATTENTION SAC MUSEUM CUB SCOUT CAMPERS

1. Vehicles staying for the weekend must park in the Visitor Parking Area and **must** have a Nebraska State Park pass (1 total, one for each night you are staying at the Park) displayed in the windshield. Nebraska State Park passes may be purchased at Scouter Services Office in the Omaha Durham Scout Center up until Thursday October 11, 2018 or at the park for \$6.00 per day or \$12.00 for the weekend for vehicles with Nebraska License Plates and \$8.00 per day or \$16.00 for the weekend for Out of State License Plates. Purchases at the Park must be with CASH only. No other parking passes will be required.

2. A roster with names of all members staying at the Museum, youth, adult and siblings must be turned in to the person in charge at the time of entering the Museum on Saturday October 13, 2018.

3. Museum Rules for Cub Scout Overnight Campers

- Enter through the East doors of Hangar A. Far side closest to E.T. Mahoney State Park.
- Museum will be accessible beginning at 8:30 PM on Saturday, October 13, 2018.
- Campers will need to provide their own sleeping bag and bed roll/air mattress.
- Hangar floors are concrete so padding is recommended.
- Beverages (with sealable lids) and snacks are allowed.
- No food preparation will be allowed on museum premises.
- Campers must exit the museum by 8:30 a.m., Sunday, October 14, 2018.
- The museum opens to the public at 9:00 a.m. and is not responsible for lost or stolen items.

CUB SCOUT CAMPERS – All Cub Scout Campers are allowed to stay and Camp on Jubilee Hill on Friday Night and then move to the SAC Museum on Saturday

4. Park Rules for Jubilee Hill Campers

- Do not set up any ax yards or boundary lines as these can be trip hazards.
- Units are expected to follow the “Pack it in - Pack it out” method of dealing with trash. Dumpsters will be located in high volume areas of the park.
- Portable latrines will be provided to supplement permanent toilet facilities found in the Park.
- Water stations will be provided, but you are encouraged to bring large Full water containers and canteens.
- Wastewater **MUST** be collected and disposed of in designated collection points. Dumping wastewater (sometimes called “grey water”) onto the ground in your campsite is a violation of state park rules. There will be barrels with signs designated as wastewater on Jubilee Hill.
- **NO Fires Allowed** on the ground or in above ground fire pits including charcoal grills. Troops will be allowed to use gas/propane stoves in accordance with BSA safety policies and rules.
- Any digging must be approved by the Campmaster assigned to your area to avoid hitting underground power and/or water lines.
- Additional information and rules can be found in the Jubilee “Leaders Guide” on the Mid America Web Site at “http://www.mac-bsa.org/camp_details.aspx?ID=2712”

5. HAVE A GREAT TIME AT JUBILEE!

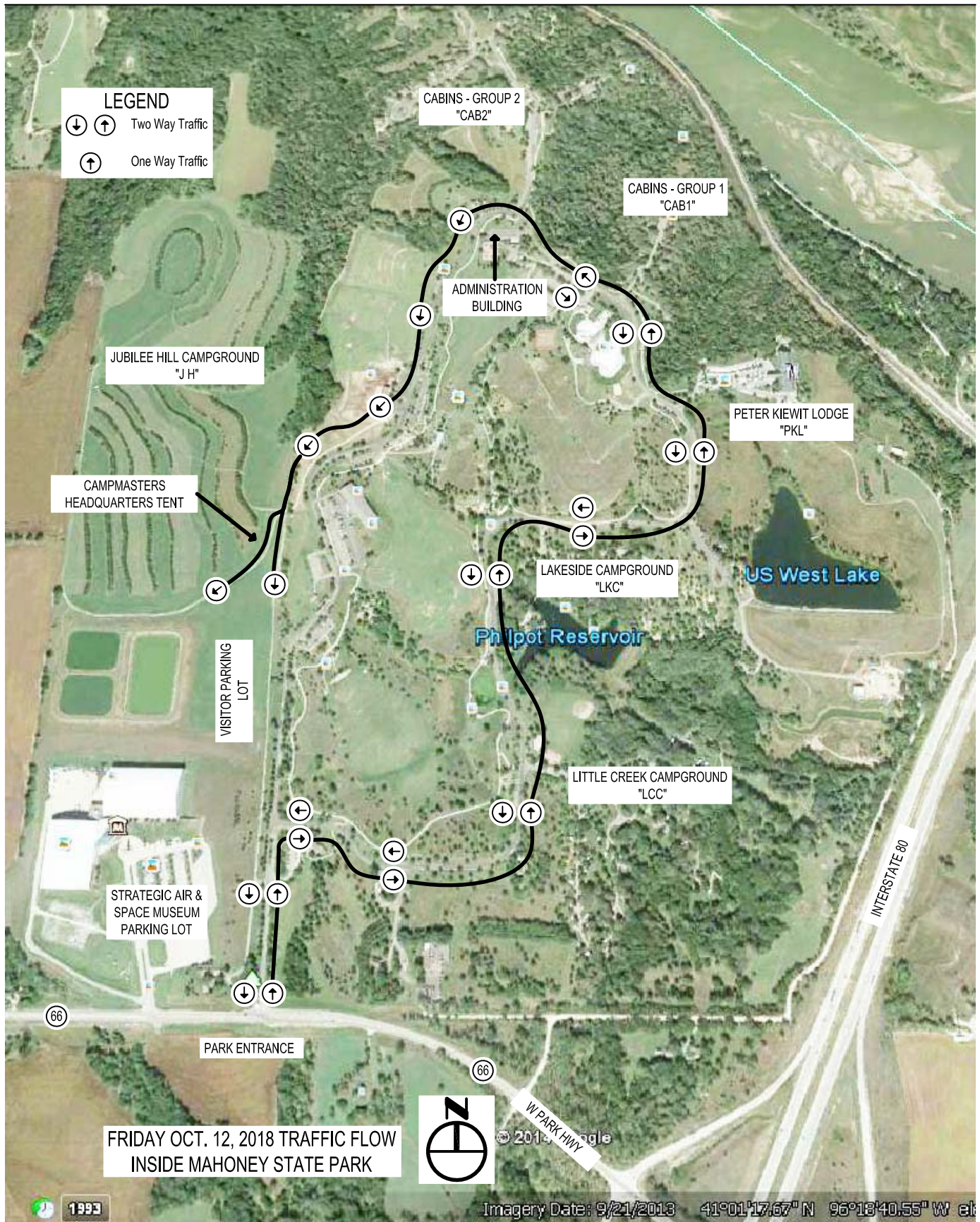
DRIVING RULES IN PARK ON FRIDAY OCTOBER 12, 2018

Before Entering Park Entrance

1. Hang Vehicle Tag (Only For Jubilee Hill Vehicles) on Rearview Mirror so that it can be read from the outside. Jubilee Issued Vehicle Tags (which have been issued, 1 per each Scout Unit) are not required for any other vehicles.
2. All Vehicles shall be required to have Nebraska State Park Passes. Place the Nebraska State Park pass stickers on dashboard in lower left (Drivers Side) of windshield. If staying Friday - Sunday 2 park passes are needed for each vehicle. If staying only Saturday 1 park pass is needed for each vehicle. Nebraska State Park passes may be purchased at Scouter Services Office in the Omaha Durham Scout Center up until Thursday October 11, 2018 or at the park for \$6.00 per day or \$12.00 for the weekend for vehicles with Nebraska License Plates and \$8.00 per day or \$16.00 for the weekend for Out of State License Plates. Purchases at the Park must be with CASH only.

Upon Entering Park Entrance

1. Stay in the right lane and bypass the Park Kiosk. Follow the signs until you arrive at your assigned Camp Accommodation area.
2. **DO NOT STOP ON THE ROAD!** If you miss your Camp Accommodation Area turnoff keep on moving. Do not Stop as you will eventually be able to go around the park in a loop and eventually get back to your turnoff.
3. Turn Offs To Accommodation Areas will be labeled as follows:
 - A: Little Creek Campground. "LCC"
 - B: Lakeside Campground. "LKC"
 - C: Peter Kiewit Lodge. "PKL"
 - D: Cabins - Group 1. "CAB1"
 - C: Cabins – Group 2. "CAB2"
 - E: Jubilee Hill. "JH"
4. There will be Volunteers and Military Personal to help direct traffic. **Please Follow their Instructions!**



DRIVING RULES IN PARK ON SATURDAY OCTOBER 13, 2018

Before Entering Park Entrance

1. All Vehicles shall be required to have Nebraska State Park Passes. Place the Nebraska State Park pass stickers on dashboard in lower left (Drivers Side) of windshield. For Saturday Visitors 1 park pass is needed for each vehicle. Nebraska State Park passes may be purchased at Scouter Services Office in the Omaha Durham Scout Center up until Thursday October 11, 2018 or at the park for \$6.00 per day or \$12.00 for the weekend for vehicles with Nebraska License Plates and \$8.00 per day or \$16.00 for the weekend for Out of State License Plates. Purchases at the Park must be with CASH only.
2. No other parking passes required.

Upon Entering Park Entrance

1. Stay in the left lane and bypass the Park Kiosk IF IT IS NOT STAFFED. Follow the signs until you arrive at the Visitor Parking Area.
2. **DO NOT STOP ON THE ROAD!**
3. There will be Volunteers and Military Personal to help direct traffic. **Please Follow their Instructions!**



ATTENTION JUBILEE HILL CAMPERS

1. Camp Trailers (Only One per Unit) can be dropped off at Jubilee Hill in Mahoney State Park after 3:00pm on Thursday October 11, 2018. No Camping or setting up tents will be allowed until after NOON (12:00pm) on FRIDAY October 12, 2018. **There will only be one vehicle per Scouting Unit allowed on Jubilee Hill.** The vehicle pulling the camp trailer or other designated vehicle will be allowed to stay in the area of the assigned campsite and must have a Nebraska State Park pass (2 total, one for each day) displayed in the windshield along with the Jubilee Hill "JH" Parking Vehicle Tag that is included in your packet and shall be hung on the rearview mirror. NO CAMPERS OR RV'S ARE ALLOWED ON JUBILEE HILL, ONLY VEHICLES & TROOP TRAILERS! The Jubilee Hill Vehicle Tag has been sent to one of your Registered Unit Leaders (Only One per Scouting Unit).

2. Additional vehicles staying for the weekend must park in the Visitor Parking Area and **must** have a Nebraska State Park pass (2 total, one for each day) displayed in the windshield. Nebraska State Park passes may be purchased at Scouter Services Office in the Omaha Durham Scout Center up until Thursday October 11, 2018 or at the park for \$6.00 per day or \$12.00 for the weekend for vehicles with Nebraska License Plates and \$8.00 per day or \$16.00 for the weekend for Out of State License Plates. Purchases at the Park must be with CASH only. No other parking passes will be required.

3. A roster with names of all members staying in your camp, youth, adult and siblings must be turned in to the Main Campmaster Tent near the entrance to Jubilee Hill no later than 7:00am on Saturday October 13, 2018.

4. Any Troop and Packs who are planning to team up to camp together should try to haul all of their groups gear in the same trailer. The person hauling the gear needs to have a total tent count for both the Troop and Pack so that the Campmasters making the assignments can provide a large enough accommodation for the Units.

5. Park Rules for Jubilee Hill Campers

- Do not set up any ax yards or boundary lines as these can be trip hazards.
- Units are expected to follow the "Pack it in - Pack it out" method of dealing with trash. Dumpsters will be located in high volume areas of the park.
- Portable latrines will be provided to supplement permanent toilet facilities found in the Park.
- Water stations will be provided, but you are encouraged to bring large Full water containers and canteens.
- Wastewater **MUST** be collected and disposed of in designated collection points. Dumping wastewater (sometimes called "grey water") onto the ground in your campsite is a violation of state park rules. There will be barrels with signs designated as wastewater on Jubilee Hill.
- **NO Fires Allowed** on the ground or in above ground fire pits including charcoal grills. Troops will be allowed to use gas/propane stoves in accordance with BSA safety policies and rules.
- Any digging must be approved by the Campmaster assigned to your area to avoid hitting underground power and/or water lines.
- Additional information and rules can be found in the Jubilee "Leaders Guide" on the Mid America Web Site at "http://www.mac-bsa.org/camp_details.aspx?ID=2712"

6. HAVE A GREAT TIME AT JUBILEE!

JUBILEE HILL "JH" 2018

