

## ATTENTION CAMPGROUND CAMPERS

1. Campers can arrive in Mahoney State Park any time on Friday October 12, 2018. All vehicles staying in the designated campground campsites Little Creek "LCC" or Lakeside "LKC" must have a Nebraska State Park pass (2 total, one for each day) displayed in the windshield. All vehicles parking in the campsite are to maintain a minimum of two tires on the camp pad pavement. Carpooling is highly recommended for large groups. NO PACK/TROOP TRAILERS ARE ALLOWED to be parked in the campground unless all tires are parked entirely on the pavement of a camp pad and do not overhang into the roadway.

2. Additional vehicles staying for the weekend must park in the Visitor Parking Area and **must** have a Nebraska State Park pass (2 total, one for each day) displayed in the windshield. Nebraska State Park passes may be purchased at Scouter Services Office in the Omaha Durham Scout Center up until Thursday October 11, 2018 or at the park for \$6.00 per day or \$12.00 for the weekend for vehicles with Nebraska License Plates and \$8.00 per day or \$16.00 for the weekend for Out of State License Plates. Purchases at the Park must be with CASH only. No other parking passes will be required.

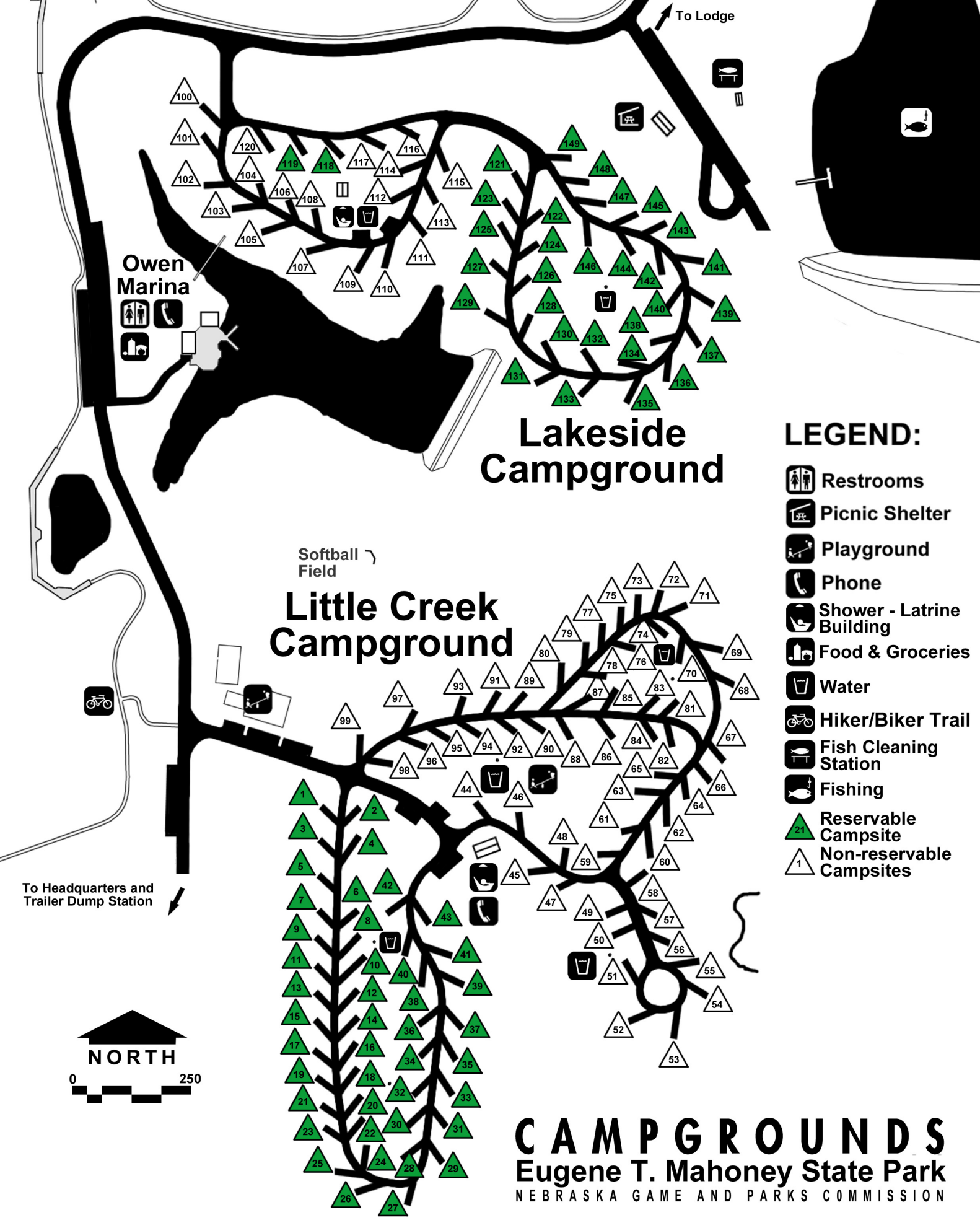
3. A roster with names of all members staying at your campsite, youth, adult and siblings must be turned in to the Main Campmaster Tent near the entrance to Jubilee Hill no later than 7:00am on Saturday October 13, 2018.

### 4. Park Rules for Little Creek "LCC" and Lakeside "LKC" Campground Campers

- Do not set up any ax yards or boundary lines in the Campgrounds as these can become trip hazards.
- Units are expected to follow the "Pack it in - Pack it out" method of dealing with trash. Dumpsters will be located in high volume areas of the park.
- There are water stations provided around the campgrounds. A map is included indicating the locations.
- Wastewater - the park has a dump station on the main roadway between the Campgrounds and Administration Building/Park Entrance that can be used on Sunday.
- **Fires are Allowed** only in existing fire rings. No other fires are allowed. State of Nebraska Park rules must be followed concerning the transport and use of firewood.
- Any digging must be approved by the Campmaster assigned to your area to avoid hitting underground power and/or water lines.
- Additional information and rules can be found in the Jubilee "Leaders Guide" on the Mid America Web Site at "[http://www.mac-bsa.org/camp\\_details.aspx?ID=2712](http://www.mac-bsa.org/camp_details.aspx?ID=2712)"

5. Anyone wanting to stay before Friday morning or after Sunday morning must make reservations with Mahoney State Park in advance.

### 6. HAVE A GREAT TIME AT JUBILEE!



Owen Marina

# Lakeside Campground

# Little Creek Campground

## LEGEND:

- Restrooms
- Picnic Shelter
- Playground
- Phone
- Shower - Latrine Building
- Food & Groceries
- Water
- Hiker/Biker Trail
- Fish Cleaning Station
- Fishing
- Reservable Campsite
- Non-reservable Campsites

# DRIVING RULES IN PARK ON FRIDAY OCTOBER 12, 2018

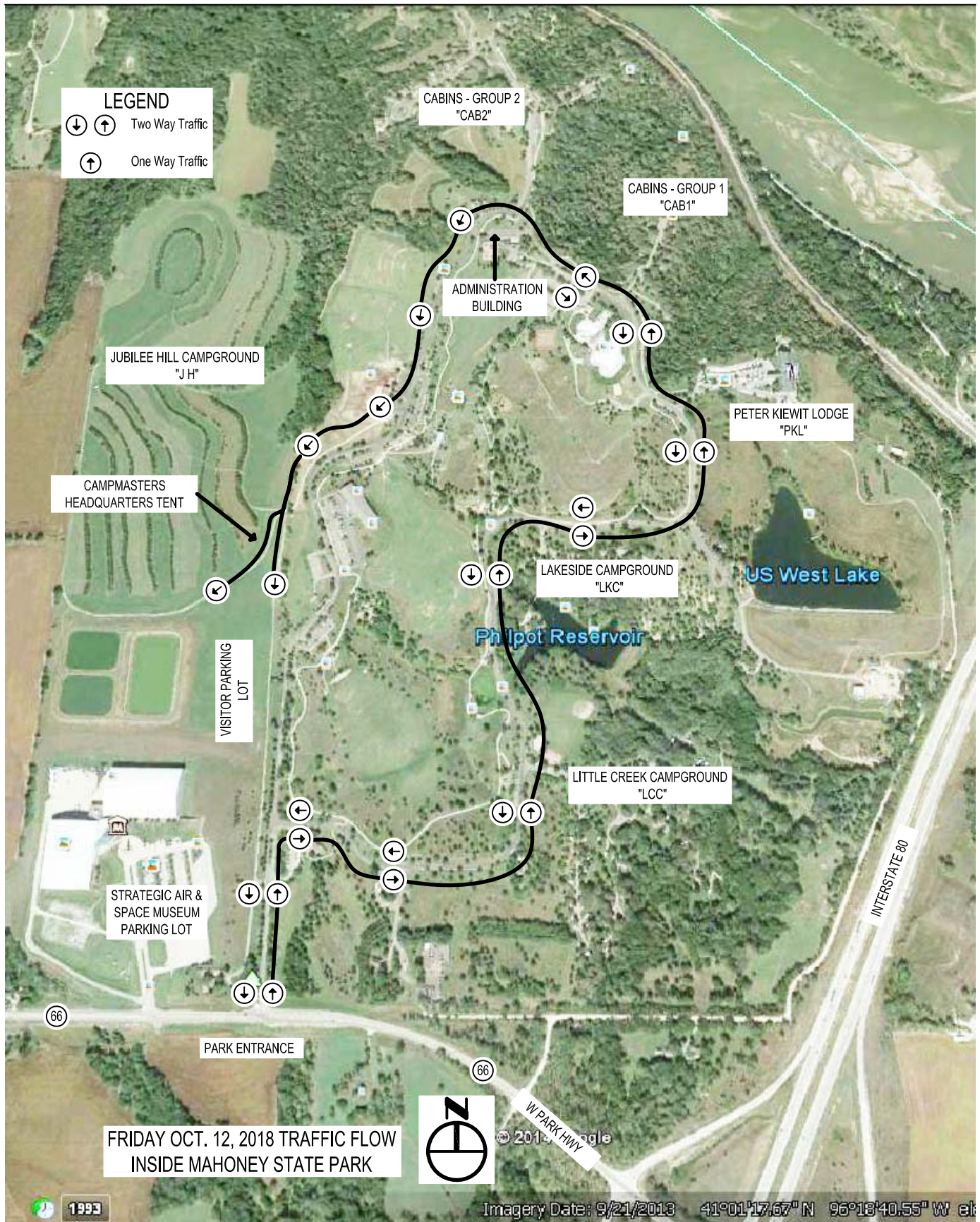
## **Before Entering Park Entrance**

1. Hang Vehicle Tag (Only For Jubilee Hill Vehicles) on Rearview Mirror so that it can be read from the outside. Jubilee Issued Vehicle Tags (which have been issued, 1 per each Scout Unit) are not required for any other vehicles.
2. All Vehicles shall be required to have Nebraska State Park Passes. Place the Nebraska State Park pass stickers on dashboard in lower left (Drivers Side) of windshield. If staying Friday - Sunday 2 park passes are needed for each vehicle. If staying only Saturday 1 park pass is needed for each vehicle. Nebraska State Park passes may be purchased at Scouter Services Office in the Omaha Durham Scout Center up until Thursday October 11, 2018 or at the park for \$6.00 per day or \$12.00 for the weekend for vehicles with Nebraska License Plates and \$8.00 per day or \$16.00 for the weekend for Out of State License Plates. Purchases at the Park must be with CASH only.

## **Upon Entering Park Entrance**

1. Stay in the right lane and bypass the Park Kiosk. Follow the signs until you arrive at your assigned Camp Accommodation area.
2. **DO NOT STOP ON THE ROAD!** If you miss your Camp Accommodation Area turnoff keep on moving. Do not Stop as you will eventually be able to go around the park in a loop and eventually get back to your turnoff.
3. Turn Offs To Accommodation Areas will be labeled as follows:
  - A: Little Creek Campground. "LCC"
  - B: Lakeside Campground. "LKC"
  - C: Peter Kiewit Lodge. "PKL"
  - D: Cabins - Group 1. "CAB1"
  - C: Cabins – Group 2. "CAB2"
  - E: Jubilee Hill. "JH"
4. There will be Volunteers and Military Personal to help direct traffic. **Please Follow their Instructions!**





## DRIVING RULES IN PARK ON SATURDAY OCTOBER 13, 2018

### **Before Entering Park Entrance**

1. All Vehicles shall be required to have Nebraska State Park Passes. Place the Nebraska State Park pass stickers on dashboard in lower left (Drivers Side) of windshield. For Saturday Visitors 1 park pass is needed for each vehicle. Nebraska State Park passes may be purchased at Scouter Services Office in the Omaha Durham Scout Center up until Thursday October 11, 2018 or at the park for \$6.00 per day or \$12.00 for the weekend for vehicles with Nebraska License Plates and \$8.00 per day or \$16.00 for the weekend for Out of State License Plates. Purchases at the Park must be with CASH only.
2. No other parking passes required.

### **Upon Entering Park Entrance**

1. Stay in the left lane and bypass the Park Kiosk IF IT IS NOT STAFFED. Follow the signs until you arrive at the Visitor Parking Area.
2. **DO NOT STOP ON THE ROAD!**
3. There will be Volunteers and Military Personal to help direct traffic. **Please Follow their Instructions!**



