

ATTENTION CABIN RENTAL PARTICIPANTS

1. Participants staying in the Cabins can arrive in Mahoney State Park any time on Friday October 12, 2018. All vehicles parking in the Cabin Parking Areas "CAB1 OR CAB2" must have a Nebraska State Park pass (2 total, one for each day) displayed in the windshield. Only (2) two vehicles will be allowed for each Cabin.

2. Additional vehicles staying for the weekend must park in the Visitor Parking Area and **must** have a Nebraska State Park pass (2 total, one for each day) displayed in the windshield. Nebraska State Park passes may be purchased at Scouter Services Office in the Omaha Durham Scout Center up until Thursday October 11, 2018 or at the park for \$6.00 per day or \$12.00 for the weekend for vehicles with Nebraska License Plates and \$8.00 per day or \$16.00 for the weekend for Out of State License Plates. Purchases at the Park must be with CASH only. No other parking passes will be required.

3. A roster with names of all members staying at your cabin, youth, adult and siblings must be turned in to the Main Campmaster Tent near the entrance to Jubilee Hill no later than 7:00am on Saturday October 13, 2018.

4. Park Rules for Cabin Participants

- Room Keys can be picked up from the Campmasters starting in the afternoon on Friday October 12, 2018 at the entrance to the Cabins site "CAB2" and as shown on the Friday Driving Rules Map.

- Cabins #1 - #14 and #41 are at Group 1 "CAB1" as labeled on the attached map.
Cabins #15 - #40 and #42 - #57 are at Group 2 "CAB2" as labeled on the attached map.

- Additional information and rules can be found in the Jubilee "Leaders Guide" on the Mid America Web Site at "http://www.mac-bsa.org/camp_details.aspx?ID=2712"

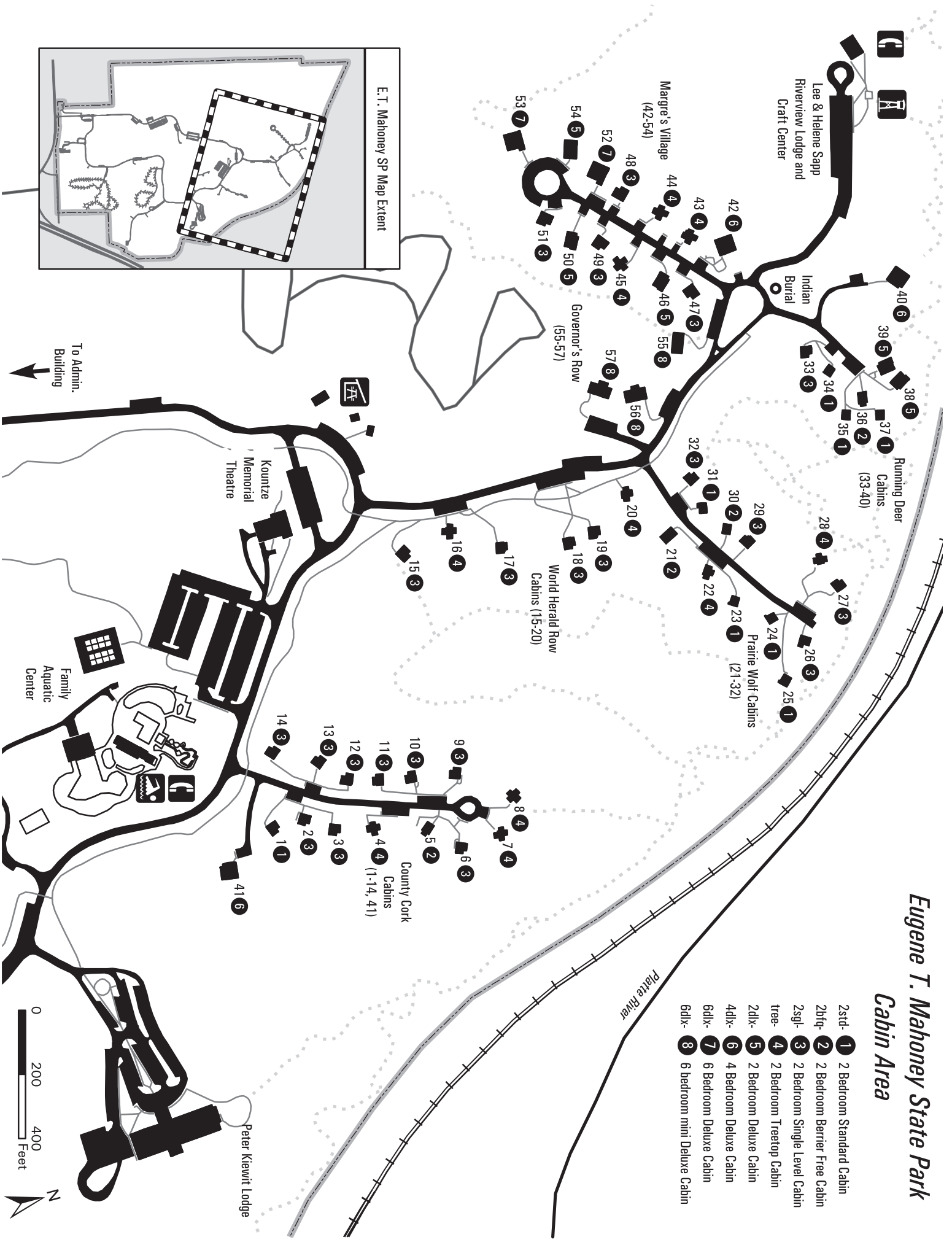
5. Anyone wanting to stay before Friday afternoon or after Sunday morning must make reservations with Mahoney State Park in advance.

6. Turn in Keys to Cabins at the Parks Kiosk located at the Entrance to the Park on Sunday as you leave.

7. HAVE A GREAT TIME AT JUBILEE!

Eugene T. Mahoney State Park Cabin Area

- 2std- 1 2 Bedroom Standard Cabin
- 2bfr- 2 2 Bedroom Barrier Free Cabin
- 2sngl- 3 2 Bedroom Single Level Cabin
- tree- 4 2 Bedroom Treetop Cabin
- 2dli- 5 2 Bedroom Deluxe Cabin
- 4dli- 6 4 Bedroom Deluxe Cabin
- 6dli- 7 6 Bedroom Deluxe Cabin
- 6dli- 8 6 bedroom mini Deluxe Cabin



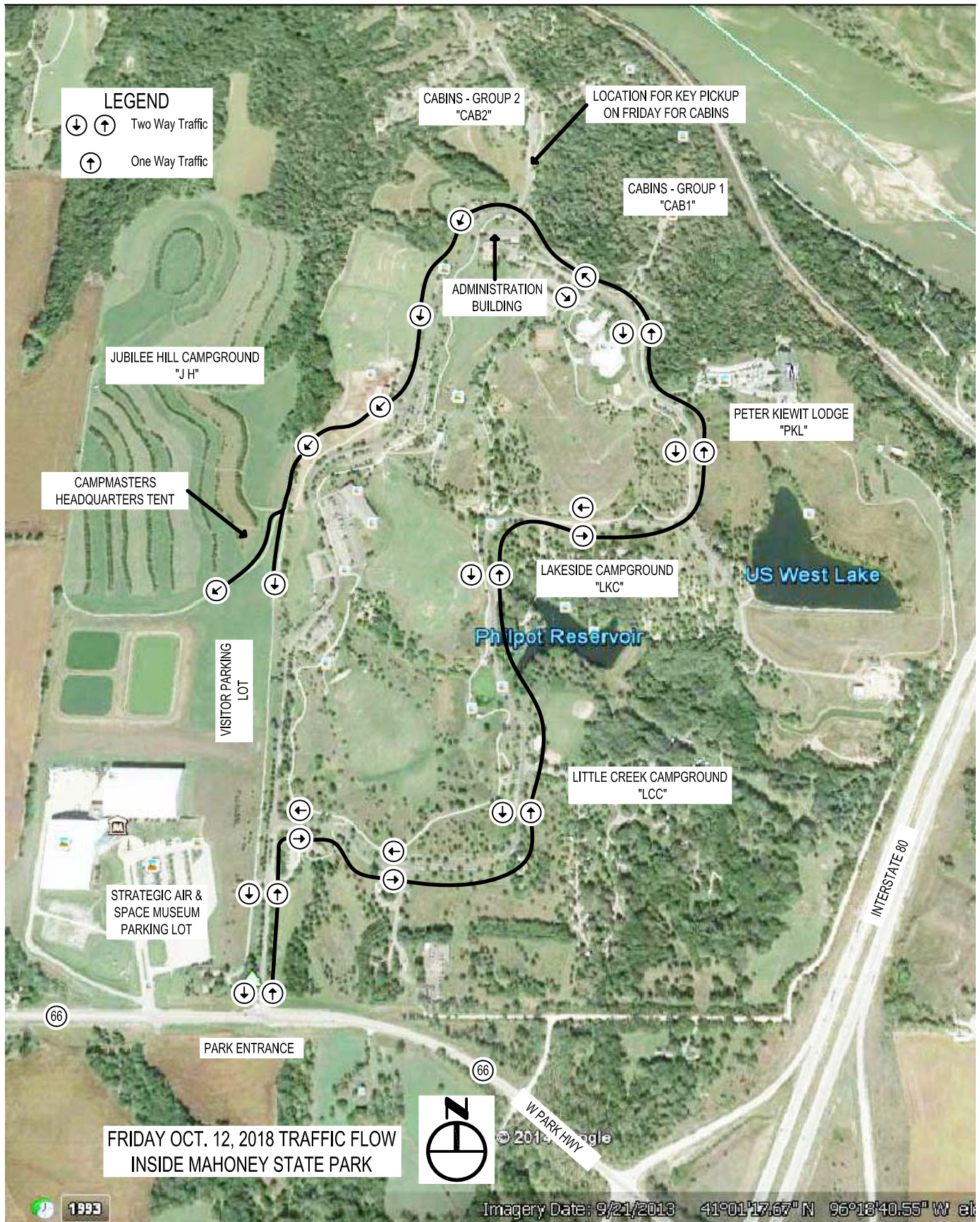
DRIVING RULES IN PARK ON FRIDAY OCTOBER 12, 2018

Before Entering Park Entrance

1. Hang Vehicle Tag (Only For Jubilee Hill Vehicles) on Rearview Mirror so that it can be read from the outside. Jubilee Issued Vehicle Tags (which have been issued, 1 per each Scout Unit) are not required for any other vehicles.
2. All Vehicles shall be required to have Nebraska State Park Passes. Place the Nebraska State Park pass stickers on dashboard in lower left (Drivers Side) of windshield. If staying Friday - Sunday 2 park passes are needed for each vehicle. If staying only Saturday 1 park pass is needed for each vehicle. Nebraska State Park passes may be purchased at Scouter Services Office in the Omaha Durham Scout Center up until Thursday October 11, 2018 or at the park for \$6.00 per day or \$12.00 for the weekend for vehicles with Nebraska License Plates and \$8.00 per day or \$16.00 for the weekend for Out of State License Plates. Purchases at the Park must be with CASH only.

Upon Entering Park Entrance

1. Stay in the right lane and bypass the Park Kiosk. Follow the signs until you arrive at your assigned Camp Accommodation area.
2. **DO NOT STOP ON THE ROAD!** If you miss your Camp Accommodation Area turnoff keep on moving. Do not Stop as you will eventually be able to go around the park in a loop and eventually get back to your turnoff.
3. Turn Offs To Accommodation Areas will be labeled as follows:
 - A: Little Creek Campground. "LCC"
 - B: Lakeside Campground. "LKC"
 - C: Peter Kiewit Lodge. "PKL"
 - D: Cabins - Group 1. "CAB1"
 - C: Cabins – Group 2. "CAB2"
 - E: Jubilee Hill. "JH"
4. There will be Volunteers and Military Personal to help direct traffic. **Please Follow their Instructions!**



DRIVING RULES IN PARK ON SATURDAY OCTOBER 13, 2018

Before Entering Park Entrance

1. All Vehicles shall be required to have Nebraska State Park Passes. Place the Nebraska State Park pass stickers on dashboard in lower left (Drivers Side) of windshield. For Saturday Visitors 1 park pass is needed for each vehicle. Nebraska State Park passes may be purchased at Scouter Services Office in the Omaha Durham Scout Center up until Thursday October 11, 2018 or at the park for \$6.00 per day or \$12.00 for the weekend for vehicles with Nebraska License Plates and \$8.00 per day or \$16.00 for the weekend for Out of State License Plates. Purchases at the Park must be with CASH only.
2. No other parking passes required.

Upon Entering Park Entrance

1. Stay in the left lane and bypass the Park Kiosk IF IT IS NOT STAFFED. Follow the signs until you arrive at the Visitor Parking Area.
2. **DO NOT STOP ON THE ROAD!**
3. There will be Volunteers and Military Personal to help direct traffic. **Please Follow their Instructions!**

