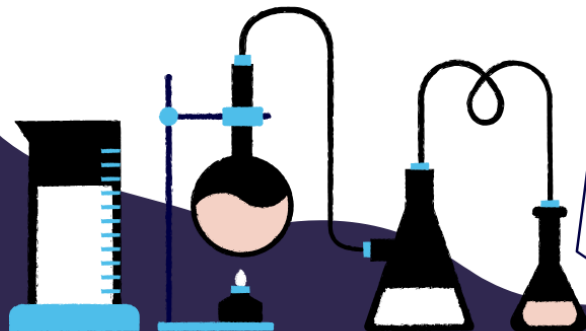


Cub Scout Day Camp

INVENTION CONVENTION

JUNE 25-27, 2005
LEADER/PARENT GUIDE



Welcome to Cub Scout Day Camp!

We are so excited to have you join us for some fun filled days this summer at Cub Scout Day Camp! This year's camp is 3 days of fun on June 25-27th, 8:30am-3:30pm(W&TH) and 8:30-6pm. . Whether you are brand new to Cub Scouts or you have attended several camps before, our Camp is sure to offer fun, challenges and adventure in the great outdoors of Nebraska.

Our theme this year is "Invention Convention". This camp is filled with creative and challenges. There will be a lot of STEM type of stations, include tower building, learning about boats, robots, electricity and more! We also have the range sports again this year but with some fun target ideas!! Can you pop a balloon or how about shoot at some ketchup packets or crackers? The boulder wall and fishing are always a great hit with the Cubs. The Camp will end the week with a family picnic and campfire. The scouts will prepare a skit during the week and showoff their acting skills at the campfire. Campers will also be presented with some awards they have earned during camp.

In this guide, you will find the information needed to prepare for a great camping experience. You will also find important details on how to be prepared for camp and what you need to bring.

We hope you find this information helpful and we look forward to seeing you at camp!

Patty Reid
Camp Director
pattyreid82@gmail.com
402-680-1273

Marcia Adams
Program Director
madams464@hotmail.com
402-321-6922

Sam Kanne
Day Camp Advisor
Sam.kanne@scouting.org
712-269-3091

MAC Member Services
Registration Support
mac@scouting.org
402-431-9272

SCHEDULE

DAY CAMP DATES

June 25-27, 2025

Walnut Creek Lake & Recreation Area

9902 Schram Road, Papillion

Check In	8:15-8:30am
Camp Begins	8:30am
Activities	8:55am-11:45pm
Lunch & Special Activity	11:55-12:55pm
Activities	1:05-3:10pm
Closing	3:20 – 3:30pm

Wednesday thru Thursday

3:30pm: Camp Ends

Friday

3:30-5pm: free time, skit practice, games!

4:45-5pm: Families may arrive

5:00–6:30pm: Campfire, skits, awards followed by dinner

6:30pm: Camp ends

Friday night dinner: Families are invited to a family picnic to finish up Day Camp. There will be no additional fee. Unit Leaders will need to turn in a head count on the first day of camp so that arrangements can be made for food preparation.

CAMP FEES

Participants:

- **Scouts** - \$80* Day Camp (\$5 late fee after June 10th)
- **Adults** - FREE with optional \$10 t-shirt purchase
Scouts that are attending camp without their unit need to contact the Camp Director for arrangements
- ***Includes** - Scouts will receive a patch, a few awards, and a t-shirt (if registered & paid by June 10th)

Staff:

- Youth: FREE - t-shirt included (if registered by June 10th)
- Adults (18+) with Current BSA Registration: FREE - t-shirt included (if registered by June 10th)
- Non-BSA Registered Adults (18+): \$25 Membership Fee - t-shirt included (if registered by June 10th)
- Youth staff must be 14 yrs. old to be considered staff. 12-13-year-olds will be volunteer assistants and must have a parent or scoutmaster with them.

Day Camp is open to all registered Cub Scouts, leaders and parents. Siblings that are not registered with BSA may not attend camp. Youth who register and are paid in full by June 10th are guaranteed to receive a free camp t-shirt.

CAMPERSHIPS

No scout should miss out on the opportunity to attend a summer camp due to financial need. Funds are available to help Scouts who need financial assistance to attend camp. All campership information is kept confidential. The application will be available online at <https://mac-bsa.org/scouting-tools/financialassistance/>.

REFUNDS

Part of a Scout's fee will be refunded only under one of the following circumstances:

- Individual illness or injury
- Death or serious illness in the immediate family
- Relocation of the family outside of the Mid-America Council

Refunds may be requested up to two weeks after the camp. Refund forms can be found at <https://247scouting.com/forms/?OrgKey=BSA326&id=937> Registration fees can be transferred to another summer camp in the same year or to another Scout.

IMPORTANT CAMPER INFORMATION

CUB SCOUT TO ADULT ATTENDANCE RATIO

- **Tigers Scouts** (1st grade fall 2025) - All Tigers must have a parent/adult with them
- **Wolf & Bear Scouts** (2nd & 3rd grade fall 2025) 2 adults per 1-8 scouts
- **Webelos** (4th & 5th grade fall 2025) 2 adults per 1-10 scouts
- Scouts not attending with their unit need contact the Camp Director to make arrangements

BSA NATIONAL STANDARD OF TWO-DEEP LEADERSHIP

All adults must be at least 21 years of age and a registered leader or participating parent. National Scouting policy requires two-deep leadership (two registered adult leaders/parents). It is not required that each Scout have their parent/guardian attend for the Scout to attend except for Tiger Cubs, which do require the attendance of the Tiger Adult Partner. All Scouts must have adult leadership from either their parents or their unit present. Our Day Camp maintains the above ratios of leadership to ensure the BSA's National Standard is met.

STAFF RESPONSIBILITIES

Our staff are responsible for making sure you have a great time at our Camps. If there is anything we can do to assist in your camp experience, please let us know. All Staff members can be identified by a Camp Staff t-shirt. Our staff is registered members of the BSA and are trained not only in their assigned areas, but also in things like Youth Protection Training, harassment identification, emergency procedures, and more. Staff is meant to support the program offered at camp, not to provide adult leadership and discipline for your pack.

CAMPER DISCIPLINE

Discipline is the responsibility of the adult leadership attending with the Pack. The camp staff is available to help with, but not take over, any discipline problem. Under no circumstances is corporal punishment allowed. Take all serious discipline problems to the Camp Director. The Camp Director reserves the right to remove any person from camp who may present a threat to any Camp Staff, camp attendees, or the camp property. All packs must provide the appropriate leadership ratios following the BSA guidelines outlined on scouting.org and in this Leader Guide.

MEALS

All campers, adults and leaders must provide their own lunch & snacks each day. All campers, adults, leaders and immediate family will be provided a picnic dinner on Friday evening. If anyone has any special dietary needs, please complete that section of the online registration or notify the Camp Director. This includes food allergies, vegetarian/vegan diets, and religious dietary needs. Peanut Allergy: We are not able to create a completely peanut-free environment in camp, but please let the Camp Director know and we will make necessary arrangements.

INSURANCE

The Mid-America Council has purchased the National Boy Scouts of America Council Accident & Sickness Insurance Plan, which will cover all registered Mid-America Council Pack, Troop and/or Crew member for both accidents and illnesses that manifest during participation in Scouting activities. All out-of-council units and other groups or individuals attending camp will not be covered by the Mid-America Council plan. Out-of-council Packs should bring proof of insurance from their council.

HEALTH & SAFETY

Our day camp will be staffed with a medical staff on hand during camp hours. Our health officer must check all medications, prescriptions and non-prescription drugs brought to camp, in accordance with BSA policy. All medications must be brought in the original container with the name of the person it belongs to clearly labeled. All injuries at camp must be reported to the First Aid station and registered in the camp's first aid log.

HEALTH FORMS

All campers, including adults, **MUST** bring a copy of their BSA annual Health & Medical Record with parts A & B completed within the past 12 months. School physical forms cannot be accepted. Please use this form found online at http://www.scouting.org/filestore/HealthSafety/pdf/680-001_AB.pdf and bring it to camp. There are no waivers nor exceptions. If you can provide a copy of the insurance card, that will be helpful in an emergency. Each individual should have their own health form available to turn in during check in. Do not list more than one person on the form. Health forms should be picked up before leaving camp.

WHAT TO BRING TO CAMP

- BSA Health History Form Parts A & B (all scouts & adults) w/insurance cards
- Sack lunch
- Water bottle
- Sunscreen
- Raingear
- Day pack
- Hat
- Tennis shoes
- Uniform – camp t-shirt or any scout T-shirt(would like everyone in the camp t-shirt for Friday)
- Cooler for lunches
- Adults – bring some skit ideas to share

DIRECTIONS TO CAMP

DIRECTIONS TO CAMP: Walnut Creek Lake & Recreation Area, 9902 Schram Road, Papillion. From 96th & Hwy 370 go south on 96th to Schram Road. Turn right on Schram road. Turn right on to Turkey Road – Walnut Creek Lake entrance. Take Turkey Road in to the park and turn left at the Day Camp sign (group camping & dog park area).

ARRIVAL AND CHECK-IN PROCEDURES

- Please arrive to camp between 8:15am – 8:30am. Parking space is limited at camp, so we recommend that packs carpool and caravan to camp.
- Upon arrival, each pack should have a designated leader to check the unit in each day. The leader will turn in all Health Forms for Scouts & adults. The leader will pick up their Pack schedule, their Cub Camp Den name along with wristbands for all participants.
- ALL participants will be required to wear a wristband. This camp is being held at a public park and for security reasons, we need to know who is supposed to be in our dens. Anyone without a wristband should be asked to go to the Camp Headquarters tent.
- Medical Forms will be reviewed by our medical staff and kept at the first aid station.
- Scouts who need to leave early must have a signed permission slip from the parent and notify their unit leader and the Camp Director by the morning of the early release. Any individual planning to pick up a scout from camp should be listed on the medical form and must show ID at the time of pick up from the camp headquarters.

EMERGENCIES

We will have a health officer in camp each day. The First Aid Station will be located near the Camp Headquarter/check-in area. Staff in each area will have radios or phones that can communicate with the camp directors and health officer.

END OF CAMP

Prior to the campfire Friday evening, the Pack Leader should pick up the medical forms. Evaluations will be e-mailed to you. Your feedback and comments on your experience at camp are very important to us. Please complete the evaluations within 2 weeks of after receiving them in an email. Your comments will help us to improve the experience for next year's day camp.

OTHER IMPORTANT RULES TO KNOW

- Do not bring any of the following items to camp: bikes, electronics, knives of any kind, tobacco, alcohol, unapproved drugs, pets or personal shooting equipment. See Camp Director for a designated smoking area.
- Do not attempt to touch or feed any wildlife. Report any wildlife that behaves in a strange manner to a staff member. This includes showing no fear of humans, biting, scratching, etc.
- Do not wear open-toe sandals or flip flops to camp - this includes the adults.
- Any form of bullying, hazing, ridicule, or fighting is unacceptable and may result in expulsion from camp.
- All scouts and adults must carry a water bottle or hydration pack at all times.
- Scouts are required to use the "buddy" system when traveling through camp.
- Profanity is unbecoming of a Scout and is not tolerated in camp from any participant or leader.
- Sign-in and sign-out procedures are required. All visitors need to sign in and out through the Camp Headquarters.
- Adult leaders must report any suspicion of abuse to the Camp Director immediately.
- Please help us keep the park clean by placing all trash into the trash containers located throughout the park.
- Lost items may be turned into the Camp Headquarters. Items not claimed within 2 weeks after the completion of camp will be given to a charitable organization.
- Weather can be unpredictable throughout the summer. Everything from hot summer days, thunderstorms and chilly days – BE PREPARED. Check the forecast each day. Don't forget jackets or rain gear for the chilly or wet days. The Camp Director and Program Director will be watching the weather throughout the week. In the event of severe weather, the Camp Staff will guide the campers to the nearest shelters.