



Back To The Future Of Scouting!

LEADERS' GUIDE

**Ft. Kearney Scout Area
May 2nd—4th 2025**

<https://www.mac-bsa.org>

**For additional information please contact the Event Chair:
Cody Yendra 308-293-8562 or codyjyendra@yahoo.com**

REGISTRATION

ONLINE REGISTRATION

All registrations must be done through Mid-America Council's website:
<https://www.mac-bsa.org>

KEY DATES

Registration Ends
Event Date

April 28, 2025
May 5, 2024

FEES

| | <u>Youth Participant</u> | <u>Adult/ Scout BSA participant</u> |
|---------|--------------------------|-------------------------------------|
| Regular | \$25 | \$15 |

CAMPING

Ft. Kearny Scout area

The open grassy area North of the Tree Row will be designated for tent Camping. Overnight camping is encouraged but not required.

Who Can attend

Cub Scouts in Lions thru Arrow of light are welcome to attend. If you would like to bring a friend to show them what scouting is all about feel free to invite them, they will need to register online as well.

ADULT LEADERS

In accordance with Youth Protection Policies, each unit MUST provide a minimum of two-deep leadership for the event.

REFUND POLICY

Effective March 1, 2025

In general, fees for district and council activities are transferable to other Scouts within the unit should a scout or adult be unable to attend. Partial refunds may be approved for all activities/events/camping programs based on the type of event and impact to the planning process for that event. If approved, the refundable amount will be returned using the original method of payment, if possible.

There will be no refunds issued for less than \$10.00.

Refund requests must be received no later than 7 days following an event.

Single Day Events: (i.e. MBU, Scouts Days with sports teams)

100% refunds available if requested more than 14 days prior to the event.

80% refunds available if requested more than 5 days prior to the event

Weekend Events: (i.e. Camporee, lock-in's, AOL and Webelos Woods)

80% refunds available if requested more than 14 days prior to the event.

70% refunds available if requested more than 5 days prior to the event.

Resident Events: (i.e. Camp Cedars, Jamboree, High Adventure Contingents, Wood Badge, NYLT)

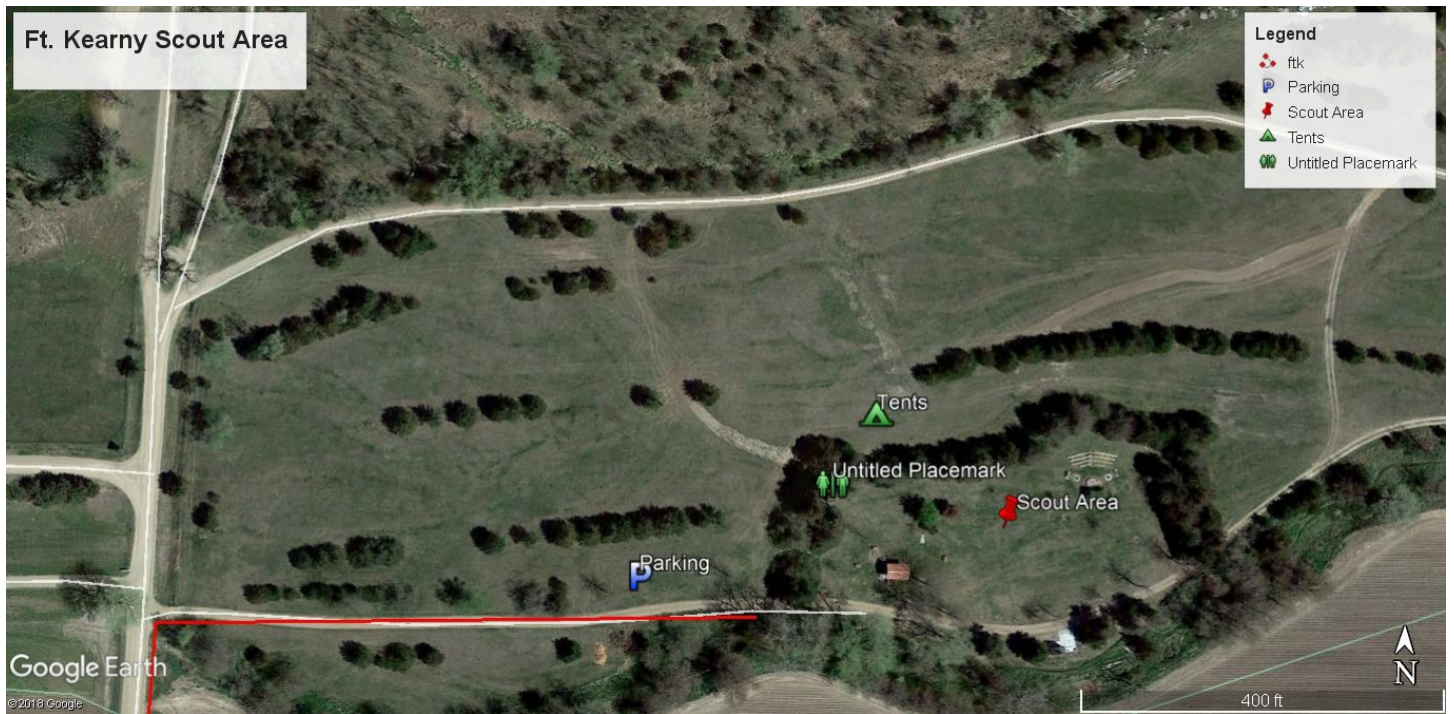
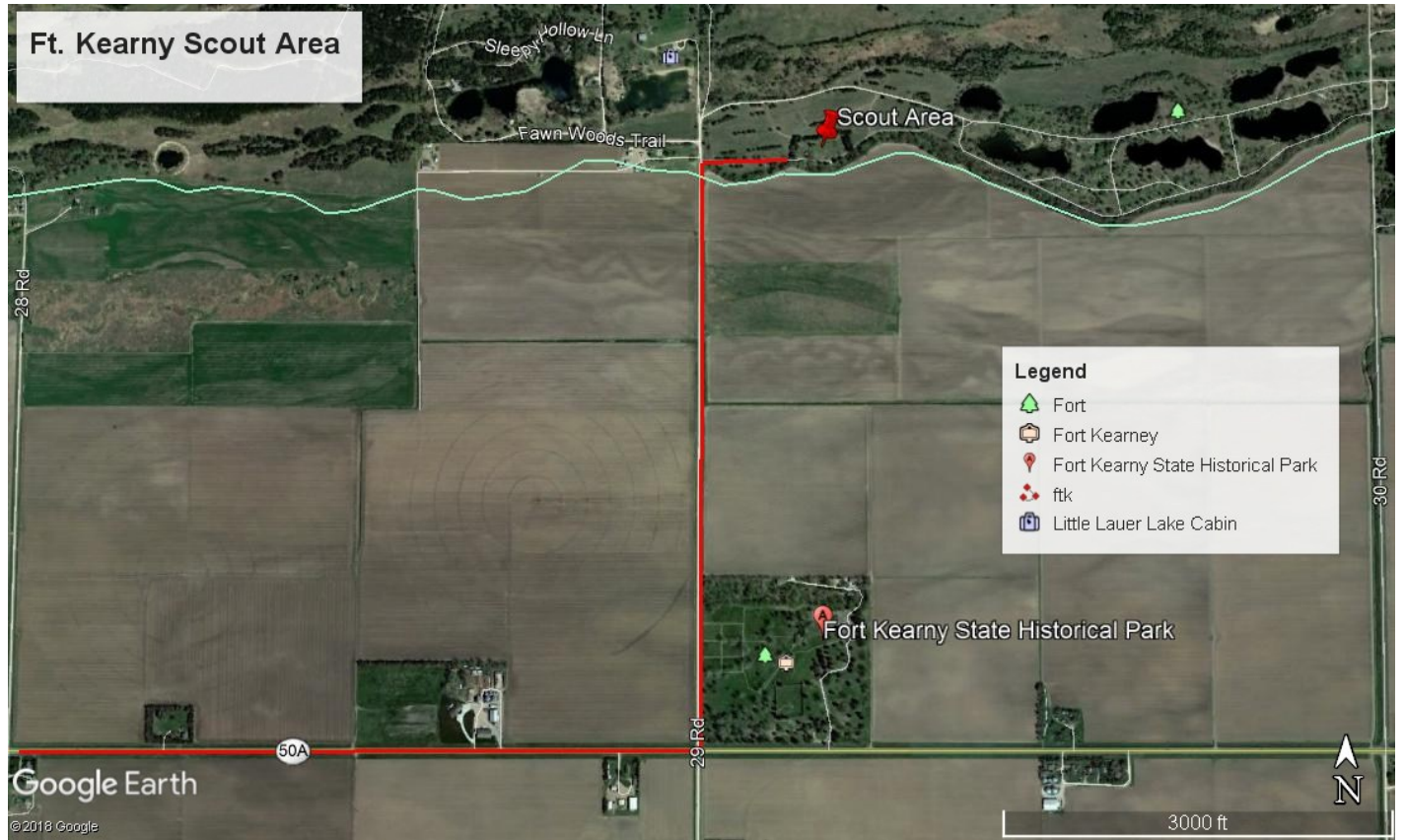
*Refund schedule will be outlined when registering for these specific events.

We understand extenuating circumstances can lead to a refund request beyond the above timeline or last-minute cancellations. The following circumstances could be eligible for a partial refund when requested.

- Sickness or injury
- Death in immediate family
- Relocation outside Mid-America Council borders

Complete online form to submit a refund request: <https://247scouting.com/forms/326-RefundRequest>.

Questions should be directed to the Mid-America Council at mac@scouting.org or 402-431-9272.



Basic Packing List

Water Bottle
– with name on it
Tent
Tarp
Sleeping Bag
Pillow
Clothes
Old Boots/Sneakers
Hat / Sunglasses
Extra Socks
Towels
Raingear
Gloves
Flashlight
Camping Cups
Water Bottles



Toothbrush & Paste
Insect Repellant
Sunscreen
* Cot
* Spare Batteries
* Camera gear
* Chairs or Camp Stools
* Medicine
* Snacks
* Ice Chest
* Pencil / Paper
* Lighter

** Optional Items*

NOTES:

No open toed shoes
Dress in Layers

PROHIBITED ITEMS

- ⊗ Shooting equipment
- ⊗ Fireworks
- ⊗ Alcohol
- ⊗ Valuables
- ⊗ Pornography
- ⊗ Illicit drugs
- ⊗ Excessive jewelry
- ⊗ Knives w/blades over 3.5"
- ⊗ Inappropriate clothing
- ⊗ Laser pointers
- ⊗ Aerosol cans

Each Vehicle must have a NE State Park Pass
There will be day passes available on-site for purchase

ACTIVITIES

****activities may change due to weather and available leaders****

FIREBUILDING

BB GUNS

ARCHERY

KNOT TYING

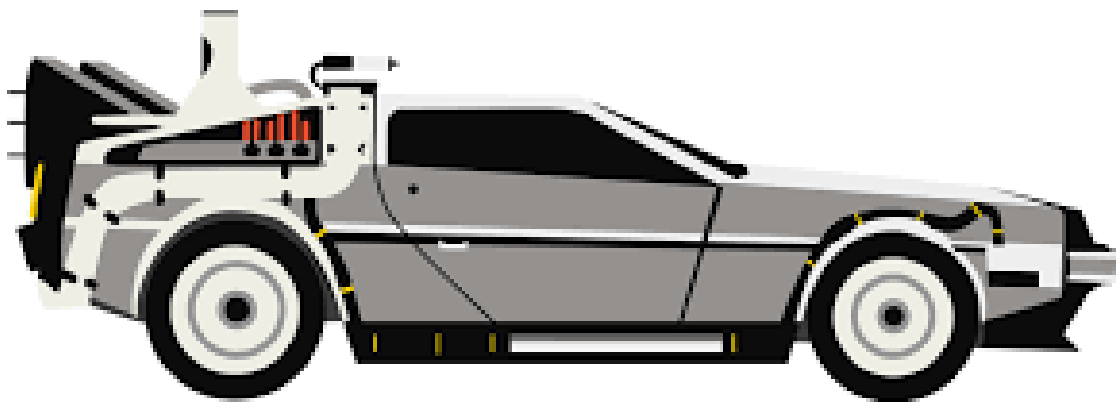
FISHING

WATER ROCKETS

HIGH VOLTAGE DISPLAY

LEATHERWORK

CAPTURE THE FLAG



SCHEDULE:

FRIDAY

| | | |
|---------|----------|----------------|
| 6:00 PM | Entrance | Troop Check-In |
|---------|----------|----------------|

SATURDAY

| | | |
|------------|-----------------------------------|---|
| 7:00 –8:30 | Entrance | Check-In and set up tents |
| 9:00–9:15 | Flag Pole | Opening flag ceremony and informational meeting |
| 9:15–11:30 | All over camp | Round-Robin Events |
| 12:00–1:00 | LUNCH TIME | |
| 1:30–4:30 | All over camp | Round-Robin Events |
| 4:30–5:15 | FREE TIME | |
| 5:30–5:45 | Closing Flags/evening notes | |
| 5:45–7:00 | SUPPER | |
| 7:15–8:00 | CAMPWIDE CAPTURE THE FLAG | |
| 8:15-9:15? | Campfire Program/"Drive-in" movie | |
| 11:00 | LIGHTS OUT | |

SUNDAY

| | |
|-------------|--------------------------|
| 08:00–08:15 | Opening flags/prayer |
| 08:15–09:30 | Breakfast |
| 09:45–10:15 | Scouts Own Service |
| 10:15–12:00 | Clean up/Pack up/Go home |

CHECK-IN PROCEDURES

1. Arrive anytime between 7:00 and 8:30 AM.
2. Adult leader will check-in with the activity leadership and get your packet. You will also turn in your health forms at this time. Please make sure if you bring non scouting youth you have a health form for them as well.
3. After checking in, the pack will proceed to its designated camping area.

CHECK-OUT PROCEDURES

1. Please find an activity leader and have them check your campsite to be sure that it has been cleaned up.
2. Check out with the activity leadership to pick up your health forms and any other materials.
3. Have a safe trip home!

POLICIES

HEALTH FORMS

- Every participant must provide a copy of their annual health and medical form as well as a copy of their insurance card. These will be returned at the end of the session.
- Parts A & B of the Annual Health and Medical Record must be completely filled out with all appropriate signatures.
- A copy of the participant's health insurance card must be attached to the Annual Health and Medical Record.
- A fillable copy of the Annual Health and Medical Record can be found at:
http://www.scouting.org/filestore/HealthSafety/pdf/680-001_AB.pdf

MEALS

- Lunch and Supper on Saturday and breakfast on Sunday is provided.
- If you decide to camp Friday night you will be in charge of your own meals.

DAMAGE TO COUNCIL EQUIPMENT

- Any damage to council-owned equipment through abuse will be the responsibility of the unit.
- Replacement costs will be assessed to the unit based on the cost of the damaged item. Units will be responsible for damaged equipment before leaving camp.

PETS

No pets are allowed on camp property except for service animals or animals which are for a program/demonstration with the approval of the Ranger.

TOBACCO USE

As we set an example for our scouts, tobacco use is only allowed in the designated area behind the Visitor Center or in personal vehicles. For the health of all scouts and scouters, please respect the rights of all others and refrain from tobacco use in your campsite or other non-approved areas. This includes the use of electronic cigarettes, personal vaporizers, or electronic nicotine delivery systems that simulate tobacco smoking.

PRIVACY

By participating in Mid-America Council activities, you agree to allow Mid-America Council to use your image in camp and council promotional materials.

ANTI-DISCRIMINATION

In the operation of the activity, no child, as defined by program regulations, will be discriminated against because of race, sex, sexual orientation, color, age, creed, ethnicity, national origins, or handicap.

CONTACTS

Event Chair

Cody Yendra
(308) 293-8562
codyjyendra@yahoo.com

Staff Advisor

Josh Sikes
(308) 293-6264
Joshua.Sikes@scouting.org