

soaring eagle day camp

june 12-16, 2017



chalco hills recreation area

leader guide



Table of contents

Note from Leadership	3
Purpose of Cub Scout Day Camp	4
Adult Help Requested	5
Day Camp Location, Dates, and Fees	6
Refund Policy	6
Daily Schedule	7
Camp Check-In/Check-Out Procedures	7
What to Bring	8
Health and Medical	9
Fire and Severe Weather	9
Security	10
General Information	10-11



A note from the Camp and Program Director

Thank you for signing your Scout up for Soaring Eagle's 5 Day Camp. Our goal with this camp is to bring unparalleled experiences for more youth.

We have a great opportunity for the scouts to enjoy five full days of Cub Scout activities, including advancement opportunities, as well as a chance for leaders and parent volunteers alike to participate with their scouts in learning the core values of Cub Scouting.

We want you to feel comfortable with the format, schedule, and location of the camp. Please familiarize yourself with the contents of this guide and feel free to contact us with any questions or information requests.

We look forward to seeing you out at camp!

Yours in Scouting,

Alex Kreifels,
Camp Director

Sandra Clarke,
Program Director



Purpose of Day Camp

This bug busting handbook will be a guide for both parents and leaders alike for Day Camp. It will serve as an introduction to those new to the program and refresher for the veterans. The camp is planned and administrated by the Camp and Program Directors, utilizing Associate Directors of Program and Staff.

Cub Scout Day Camp is a weeklong outdoor experience for boys. Program will run from 8:30 a.m. to 4 p.m. Cub Scout Day Camp:

- promotes year-round Cub Scout program
- strengthen the operation of Dens with teamwork, leadership, and cub scout skills
- provides advancement opportunities for Cub and Webelos Scouts in a local camp setting
- achieves Scouting's ideals of character development, citizenship, and personal fitness

Bugbusters is the 2017 Cub Camp theme, and we will focus on fun activities including investigating science, games, unique patches/badges, shooting sports, nature, skits and songs. We will promote Scouting and the Scout spirit in our activities while we slide in both education and advancement. The program is designed for all registered Cub Scouts (boys who have completed kindergarten and not completed the fifth grade)

All registered Cub Scouts are eligible to attend day camp. Day camp uses the same ranks to identify age groups as your pack.

- Tigers are boys who have completed kindergarten; **An adult partner must attend with each Tiger Cub**
- Wolves have completed the first grade
- Bears have completed second grade
- Webelos have completed third grade
- Arrow of Light Scouts have completed fourth grade

TIGER Partners: It is a National BSA requirement that all Tiger Scouts must have an adult partner with them at all activities. The adult partner is expected to participate.

The volunteers and staff at day camp are committed to providing the best possible program for your Scouts. Their focus is on running a safe, fun and educational camp full of Scout spirit. In order for the staff to maintain that focus, **packs should provide their own 2-deep leadership for the youth attending from their pack.** Tiger adult partners are NOT considered part of the 2-deep leadership for Scouts in the older dens. Thank you for your cooperation and assistance in creating a successful day camp.



Adult help requested

Day camp is a great opportunity for you to spend time with your Scout. We ask that if you stay with your son's den, that you assist in the activity being done at that time. If you're unable to spend the whole week with us, we request that you spend at least an hour or two at Camp, assisting with an area that could use your help. This could be a daily commitment, or a one time commitment. Please register to volunteer when you sign your son up for camp.

Name	Day Help Needed	Start Time	End Time	Notes
Daily Setup	Mon/Tues/Wed/Thurs	07:00 AM	08:00 AM	You will help with setting up the stations for the day as well as unloading the trailer.
Checkin	Mon/Tues/Wed/Thurs	07:45 AM	08:45 AM	Help with the Drop off/Check in process. Each youth has to be checked in Daily. There is a small 3 question medical re-check that happens on a daily basis with each car. Please arrive by 7:45, you should be able to depart by 8:45. Members of the team would also aid with Parking and traffic logistics
Den Walker	Mon/Tues/Wed/Thurs	08:00 AM	04:00 PM	Someone who will work with a group of 10-15 boys throughout the week as their Den Walker. You would help out with stations that your scouts are at.
Morning Program	Mon/Tues/Wed/Thurs	09:00 AM	12:00 PM	Provide leadership to an Activity Station on a daily basis, such as Nature, STEM, Shooting Sports, Fishing etc.
Afternoon Program	Mon/Tues/Wed/Thurs	01:00 PM	04:00 PM	Provide leadership to an Activity Station on a daily basis, such as Nature, STEM, Shooting Sports, Fishing etc.
Checkout/ Pickup	Mon/Tues/Wed/Thurs	03:45 PM	04:30 PM	Aid with the Checkout/Pickup process for day Camp. Arrive daily around 3:45 and plan to depart around 4:30. Help ensure scouts and parents connect and quickly depart to ensure a smooth check out process.
Daily Teardown	Mon/Tues/Wed/Thurs	03:45 PM	04:45 PM	Someone who will help with the daily tear down for the Event. Arrive Daily at 3:45 and plan to depart around 4:45.
Friday Meal	Friday	10:30 AM	01:00 PM	From 10:30 - 1:00 Help serve the camp wide meal on Friday. This could include slicing watermelon, grilling hot dogs, emptying trash etc.



Location, dates, and fees



Chalco Hills Recreation Area

Monday through Friday

June 12-16, 2017

8:30 am – 4 pm

Friday Camp will dismiss early after Campfire, approximately 2:30pm

Early Bird Fee - \$100 (deadline to be registered May 22, 2017)

Regular Fee - \$120 (starting May 23, 2017)

Fees cover the following items: Patch, Day camp tee-shirt, recognition items, and supplies

Refund policy

Refund forms can be found on the Mid-America Council website, www.mac-bsa.org.

The Mid-America Council's refund policy reads: Fees for most district and council activities are transferable to other Scouts within the unit. Partial refunds may be approved for all accredited camping programs including Cub Scout Family Weekends, Week-long Cub Scout Day Camps, Summer Resident Camp, MAC High Adventure Contingents, National Youth Leadership Training, Wood Badge, and Powder Horn. If approved, the refundable amount will be returned using the original method of payment, if possible. Refunds will not be considered for requests made more than two weeks from the conclusion of the camp. There will be no refunds under \$10.00. **Refunds will only be considered if one of the following circumstances applies, and will not exceed 80% of the fees paid.**

NOTE: Refunds will not be approved for cancellations due to a conflict with another Scout or non-Scout activity.

Only circumstances considered (You must provide supporting documentation for consideration):

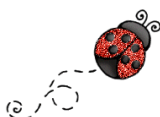
- Sickness or injury (requires physician's note)
- Death in immediate family (requires copy of obituary)
- Relocation outside Mid-America Council borders (requires copy of new BSA registration or military orders)



Daily schedule

8:15 – 8:30	Check In
8:30 – 9:15	Opening Flags
9:25 – 10:00	Session 1
10:10 – 10:45	Session 2
10:55 – 11:30	Session 3
11:30 – 12:00	Lunch
12:00 – 12:30	Free Time
12:40 – 1:15	Session 4
1:25 – 2:00	Session 5
2:10 – 2:45	Session 6
2:55 – 3:30	Skits
3:30 – 4:00	Closing
4:00	Pick Up

Note: A more detailed schedule with specific program offerings will be published in the Program Guide, which will be posted April 1st.



Check in and check out procedure

Daily check in begins at 8:15 am. Completed medical forms must be on file for car side check in. If medical forms are not filled out in their entirety (Parts A and B) parents/guardians must park their vehicle and walk their Scout to the Medic tent for check in. Late arrivals must check in at the Medic tent as well.

At check in each day, a short, verbal questionnaire will be conducted to ensure the health and safety of all campers. On day one, scouts will proceed to the Medic tent to receive their identification lanyard and Day Camp tshirt.



Lanyards will be collected at the end of each day. At the conclusion of Day Camp, Scouts will be allowed to take them home. Scouts **MUST** wear these lanyards at all time while attending camp.

All Staff and Volunteers will have specific attire identifying them as such. These and all other adult visitors **MUST** check in at the Medic tent to receive a wristband. Every person on site at Day Camp must have a completed Medical Form on file, **INCLUDING** adults. All adults must check in at the medic tent each day to receive their wristband. For adults who are spending the day with their Scout, we will have a designated parking area for them.

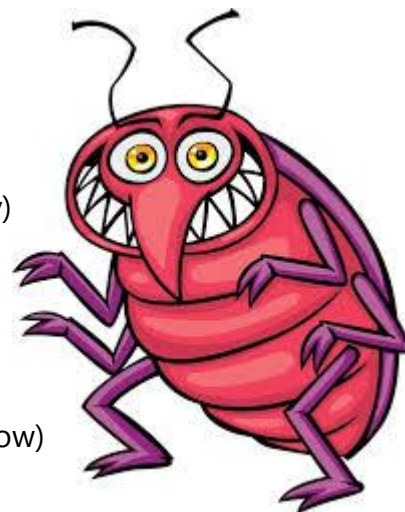
The exact time your child is released from Day Camp **MUST** be recorded during check out procedure. At 4pm, the Scouts will be ready for car side pick up.

On Friday, parents and families are invited to join us for a picnic lunch and closing ceremony. Although select activities are available for family enjoyment, most campers are checked out from camp by 2:30pm. All staff will be leaving camp no later than 4pm.

What to bring to camp

Each Scout should bring the following items:

- Refillable water bottle/canteen
- Lunch (refrigeration is not available, so please pack accordingly)
- Sunscreen and Insect repellent
- Closed toe shoes
- Hat or sun visor
- Bandana/wash cloth/hand towel
- Required prescription medication in original container (see below)



Medication:

Medication that must be taken during camp hours, must be 1) listed on Medical Part B; 2) in the original container for that individual for that medication; 3) Turned into the camp Medic in a gallon size, re-sealable bag, with the person's name and phone number on it. All medication must be picked up prior to closing on Friday. Epi Pens should be carried by the person or Den Leader.

Everyone (adults and youth) at Camp must have Medical Forms on file at the check-in table



Health services and medical information

To ensure that accurate health information is passed between physician, parents, leaders, and boys, The Boy Scouts of America maintains a strict health service policy. Campers and adults must complete parts A and B of the BSA Medical Form. These forms are mandatory and will be secured with the Health Officer during the duration of camp. They will be kept in a secure box and will be returned to campers at check out on Friday.

National Health and Safety Guidelines state that a Scout or adult who does not have appropriate medical information on their medical form may not attend camp.

Also required on the med form is the name of each person's health and accident insurance carrier and policy number.

A parent must sign the med form, which includes an authorization for emergency treatment. Double check to see that all the required signatures and information are included.

A trained first aid person is on duty at all times. In the case of serious injury or illness, the camper will be transported to the nearest hospital, where we have a standing agreement for treatment. Parents will be contacted as soon as possible.

Fire or severe weather

In case of fire or other disaster, the camp director and program director will work with the staff to handle accordingly. The staff will have training prior to the start of camp, and will know what emergency procedures to follow. Activities will be adjusted as needed per the situation.

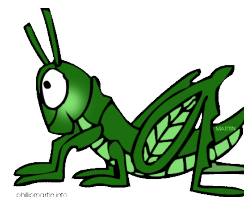


Security

All campers, staff, and visitors will be accounted for, and will need to sign in and out at the medic tent. Campers and visitors arriving during check in or check out will follow those procedures, but if there is a late arrival or early pick up, we ask that those arriving/leaving visit the medic tent. Any Scout leaving camp must have a signed med form indicating the adult(s) he is allowed/not allowed to leave Camp with.

Soaring Eagle Day Camp takes the protection of your scouts very seriously. A scout leaving early without checking out will initiate "lost scout" procedures, which includes notification of local law enforcement.

General information



Firearms and Archery Equipment

Projectiles of any nature are not allowed on camp other than those provided for programming. BB guns and other firearms or ammunition will NOT be permitted at camp. Also, leave all personal archery and BB equipment at home. Possession or use of them on camp property will be cause for immediate removal from camp for the duration of the camp. There will be no refund of unused fees.

Fireworks

Fireworks of any kind are not allowed in camp.

Footwear

Closed-toed and closed-heeled shoes or boots must be worn at all times while in any camp. Open toed sandals, clogs, crocs, and flip flops are NOT permitted. This policy applies to all camp participants, family members, staff, and visitors.

Hazing/Bullying

Hazing and bullying are strictly prohibited. Camp is intended to help Scouts grow.

Lost and Found

The camp's lost and found is located at the Medic Tent. Parents/Guardians are to remind scouts to have personal gear clearly marked with the scout's name and pack number. Each scout needs to take care of and safeguard his personal property.

Mid-America Council is not responsible for lost, stolen, or damaged items. Items not claimed within 30 days of the close of camp will either be donated to local charities or disposed of. After the end of camp, all items from the Lost and Found will be taken to the Mid-America Council Durham Scout Center to be claimed.



Pets

Pets are not permitted at camp. This applies to staff, leaders, campers, and visitors.

Tobacco

It is the responsibility of the Boy Scouts of America to protect the health and safety of the young people in the program. As a result, adults are asked to abstain from using tobacco products in any of the program areas, and around the Scouts. The use of tobacco products by anyone under the age of 18 is prohibited.

Valuables

The camp staff are not responsible for the safety of camper valuables. Please encourage your scout to leave electronics and other valuables at home.

Vehicles

Unless you are picking up or dropping your scout off, please refrain from driving around the park- we are sharing it with other people and our scouts will also need to walk to places throughout the week. Please obey all speed and road signs.

