

MAY THE
FOURTH
BE WITH
YOU

STAR CAMP 2024
LEADERS' GUIDE

Ft. Kearney Scout Area
May 4th-6th, 2024

<https://www.overlandtrailscouncil.org>
For additional information please contact the Event Chair:
Cody Yendra 308-293-8562 or codyjyendra@yahoo.com

REGISTRATION

ONLINE REGISTRATION

All registrations must be done through the Overland Trails Council's website:
<https://www.overlandtrailscouncil.org>

KEY DATES

Registration Ends	April 21, 2024
Event Date	May 4, 2024

FEES

	<u>Youth Participant</u>	<u>Adult/non participant</u>
Regular	\$25	\$15

CAMPING

Ft. Kearny Scout area

The open grassy area North of the Tree Row will be designated for tent Camping. Overnight camping is encouraged but not required.

Who Can attend

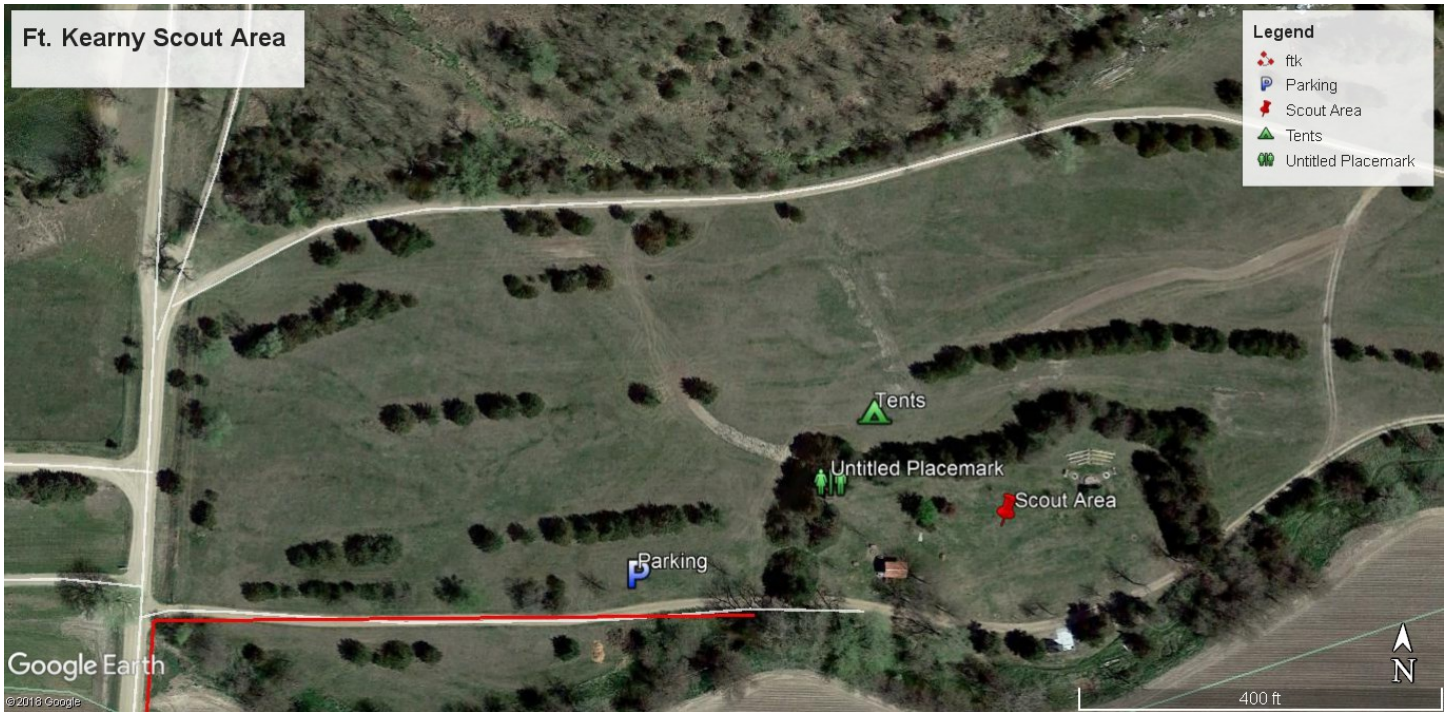
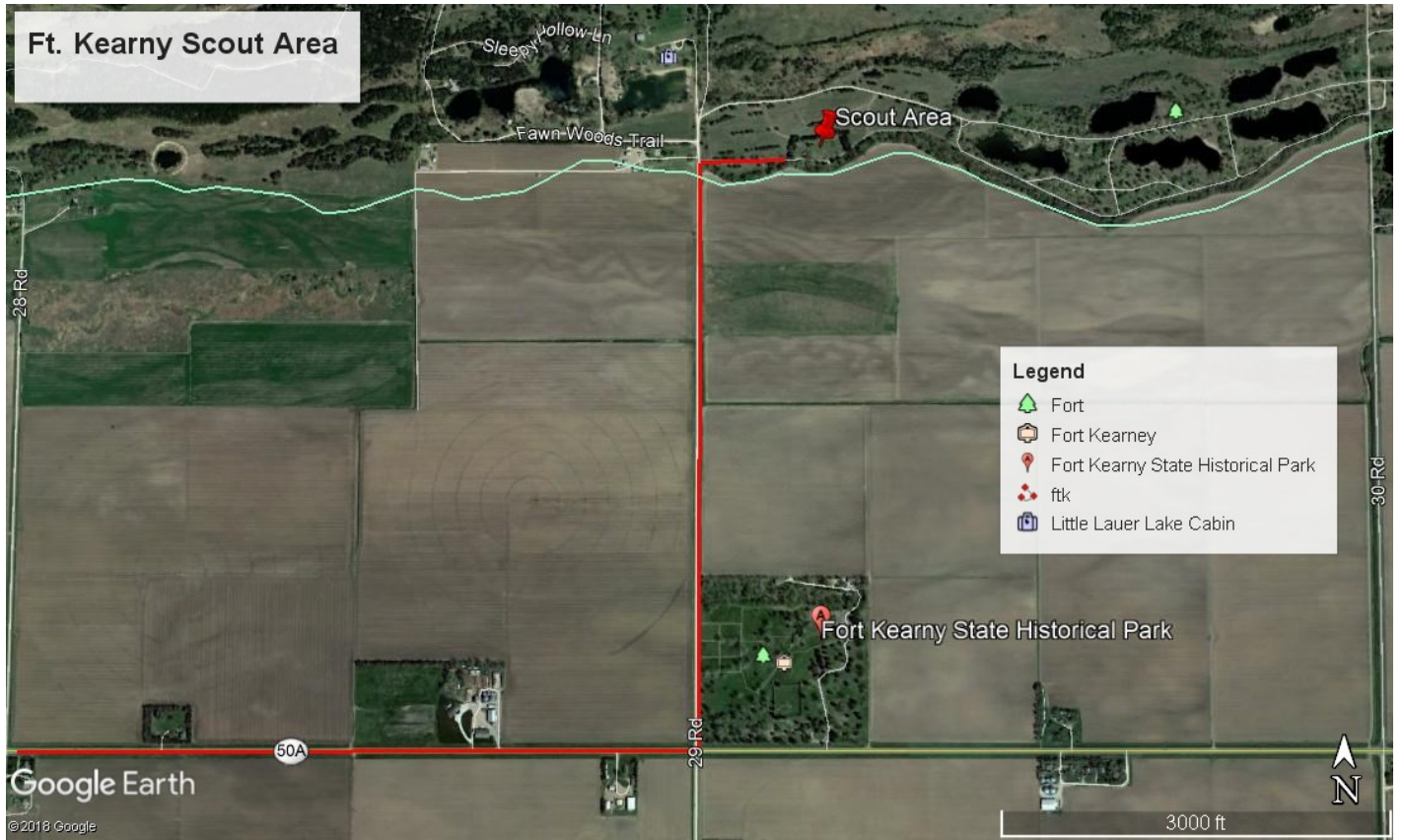
Scouts in Lions thru Arrow of light are welcome to attend. If you would like to bring a friend to show them what scouting is all about feel free to invite them.

ADULT LEADERS

In accordance with Youth Protection Policies, each unit MUST provide a minimum of two-deep leadership for the event.

REFUND POLICY

- Refunds will be considered on a case-by-case basis.
- Fees may be transferred to another Scout or Adult if done before the end of the Regular Registration period. After that, all refund requests must be in writing.
- All refund requests must be done on the form available on our website.
- 25% of the fee is non-refundable if the fee is not transferred to another Scout's or Adult's registration.
- All refund requests must be made within 30 days of the event.



Basic Packing List

Water Bottle
– with name on it
Tent
Tarp
Sleeping Bag
Pillow
Clothes
Old Boots/Sneakers
Hat / Sunglasses
Extra Socks
Towels
Raingear
Gloves
Flashlight
Camping Cups
Water Bottles



Toothbrush & Paste
Insect Repellant
Sunscreen
* Cot
* Spare Batteries
* Camera gear
* Chairs or Camp Stools
* Medicine
* Snacks
* Ice Chest
* Pencil / Paper
* Lighter

** Optional Items*

NOTES:

No open toed shoes
Dress in Layers

PROHIBITED ITEMS

- ⊗ Shooting equipment
- ⊗ Fireworks
- ⊗ Alcohol
- ⊗ Valuables
- ⊗ Pornography
- ⊗ Illicit drugs
- ⊗ Excessive jewelry
- ⊗ Knives w/blades over 3.5"
- ⊗ Inappropriate clothing
- ⊗ Laser pointers
- ⊗ Aerosol cans

ACTIVITIES

FIREBUILDING

BB GUNS

ARCHERY

SLINGSHOTS

KNOT TYING

TREBUCHET

FISHING

WATER ROCKETS

CANSTALLATIONS

IMPERIAL WALKER RACES

WOODPULP STAR DESTROYERS

CAPTURE THE FLAG



SCHEDULE:

FRIDAY

6:00 PM Entrance Troop Check-In

SATURDAY

7:00 –8:30 Entrance Check-In and set up tents
9:00–9:15 Flag Pole Opening flag ceremony and informational meeting
9:15–11:30 All over camp Round-Robin Events
12:00–1:00 LUNCH TIME
1:30–4:30 All over camp Round-Robin Events
4:30–5:15 FREE TIME/campfire skits prep
5:30–5:45 Closing Flags/evening notes
5:45–7:00 SUPPER
7:15–8:00 CAMPWIDE CAPTURE THE FLAG
8:15-9:15? Campfire Program
After Campfire—Pack members can visit the Troop campsites and enjoy the Crackerbarrel
10:30 LIGHTS OUT

SUNDAY

08:00–08:15 Opening flags/prayer
08:15–09:30 Breakfast
09:45–10:15 Worship Service
10:15–12:00 Clean up/Pack up/Go home

CHECK-IN PROCEDURES

1. Arrive anytime between 7:00 and 8:30 AM.
2. Adult leader will check-in with the activity leadership and get your packet. You will also turn in your health forms at this time. Please make sure if you bring non scouting youth you have a health form for them as well.
3. After checking in, the pack will proceed to its designated camping area.

CHECK-OUT PROCEDURES

1. Please find an activity leader and have them check your campsite to be sure that it has been cleaned up.
2. Check out with the activity leadership to pick up your health forms and any other materials.
3. Have a safe trip home!

POLICIES

HEALTH FORMS

- Every participant must provide a copy of their annual health and medical form as well as a copy of their insurance card. These will be returned at the end of the session.
- Parts A & B of the Annual Health and Medical Record must be completely filled out with all appropriate signatures.
- A copy of the participant's health insurance card must be attached to the Annual Health and Medical Record.
- A fillable copy of the Annual Health and Medical Record can be found at:
http://www.scouting.org/filestore/HealthSafety/pdf/680-001_AB.pdf

MEALS

- Lunch and Supper on Saturday and breakfast on Sunday is provided.
- If you decide to camp Friday night you will in charge of your own meals.

DAMAGE TO COUNCIL EQUIPMENT

- Any damage to council-owned equipment through abuse will be the responsibility of the unit.
- Replacement costs will be assessed to the unit based on the cost of the damaged item. Units will be responsible for damaged equipment before leaving camp.

PETS

No pets are allowed on camp property except for service animals or animals which are for a program/demonstration with the approval of the Ranger.

TOBACCO USE

As we set an example for our scouts, tobacco use is only allowed in the designated area behind the Visitor Center or in personal vehicles. For the health of all scouts and scouters, please respect the rights of all others and refrain from tobacco use in your campsite or other non-approved areas. This includes the use of electronic cigarettes, personal vaporizers, or electronic nicotine delivery systems that simulate tobacco smoking.

PRIVACY

By participating in Overland Trails Council activities, you agree to allow Overland Trails Council to use your image in camp and council promotional materials.

ANTI-DISCRIMINATION

In the operation of the activity, no child, as defined by program regulations, will be discriminated against because of race, sex, sexual orientation, color, age, creed, ethnicity, national origins, or handicap.

CONTACTS

Event Chair

Cody Yendra
(308) 293-8562
codyyendra@yahoo.com

Staff Advisor

Josh Sikes
(308) 293-6264
Joshua.Sikes@scouting.org