

**Mullan Trail District
Spring Camporee 2025
May 16-18, 2025**

Leaders Guide

Theme: Games in the Woods

Disc Golf

Geocaching



Greetings Mullan Trail Scouters,

Spring activities and Camporee are fast approaching, and I would like to invite you on behalf of the Mullan Trail Camporee Committee to take advantage of the many opportunities being offered at this year's Mullan Trail 2025 Camporee in Gilman Creek: May 16th-18th. The theme for this year's Camporee is **Games in the Woods - Disc Golf and Geocaching**.

There are many program offerings for Scouts, adults, Cubs and visitors, including:

- **Merit Badge Opportunities** – Scouts will have the opportunity to earn the Disc Golf or the Geocaching merit badge over the weekend. Scouts who plan to take the Geocaching merit badge will need to bring their own GPS unit to use.
- **Cub Scouts** – Will have activity stations, nature hikes, and events, including the BB gun range.
- **Adult Leader Training** – Training for adult leaders may include Dutch Oven Cooking, and Adult Map/Compass/GPS instruction.
- **Visitors** – Are encouraged to join the Scouting fun. Scout age visitors will join their friends in activities and adult visitors can participate in adult training or hanging out with their prospective units on Saturday.

We are highly encouraging every youth to BRING a friend and their parents for Saturday's events! Our visitor program is specifically designed for youth and adults who are new to scouting and who want to find out more of what Scouting has to offer.

We look forward to sharing an exciting Camporee weekend of Scouting at the Gilman Creek Ranch in the mountains west of Missoula, full of activities, games, campfires, hiking, and Scouting fellowship. This Camporee is open to all units in the Mullan Trail District. The Camporee runs from Friday 5PM until Sunday 2PM.

Please contact me if you have any questions and let us know as soon as possible if your unit is planning to attend. Registration will be done using Black Pug.

Yours in Scouting,

Brad Isbell - Camporee Director, Mullan Trail District
bisbell@echotech.com - 406-541-3240

Camporee Basic Information for Unit Leaders

Check-In: Friday 5-7PM

Friday Night Unit Leader Meeting: One Unit leader and the unit SPL should attend the Leaders meeting at the District Campsite Friday evening at 8PM.

Campfire Saturday Night: Campfire will begin at 9PM.

OA Call Out Saturday Night: After the campfire there will be an OA Call Out.

Model Campsite Competition: See Model Campsite Competition handout for details.

Cooking Competitions: See the Cooking Competition handout for details.

Campfire Skits: Have patrols plan on two skits or songs to do for the Campfire program Saturday night. Tell patrol leaders to inform the Program Director at the Unit Leader meeting which songs or skits they will do. All skits need to be vetted by the unit leaders before the weekend.

Cross Over Ceremony: This ceremonial Cross Over event will take place at 6:30PM Saturday at the rope bridge. Most Cross Overs have already occurred, but this is a chance for your scouts to be called to Cross Over the rope bridge, across the creek, encouraged by your Troop, friends, and family, to celebrate their joining in your Troop.

Ax Yards: All chopping of firewood will be done within Ax Yards. Firewood will also be stacked and stored on the edge of the ax yard, not next to the campfire.

Well Pump: The well pump is not a swing. If the pump is abused, it will not be available to be used.

Gilman Gauntlet Disc Golf Course: The disc golf course is a sanctioned PDGA course with competition baskets and facilities. The course components (baskets, signs, etcetera) are not toys and need to be treated with respect. They should only be touched when playing disc golf.

Mullan Trail District Spring 2025 Camporee Schedule of Events

Sunrise 6am, Sunset 9pm

Full Moon May 12

Friday – May 16, 2025

5:00 pm Units Begin to Arrive.
8:00 pm SPL, Scoutmaster, and Staff meet at District compound.
10:00 pm Lights out and taps.

Saturday – May 17, 2025

6:30 am Wakeup
7:00 am Breakfast
8:00 am Flags and opening ceremony; Instructions
9:00 am Session 1
10:00 am Session 2
11:00 am Session 3
12:00 pm Lunch
1:00 pm Session 4
3:00 pm Session 5
5:00 pm Dinner
6:30 pm Ceremonial Cross Over opportunity using camp rope bridge.
7:30 pm Adult Cracker Barrel and Cooking Competitions
8:00 pm Flags (completed by one volunteer unit; not a camp assembly)
9:00 pm Campfire hosted by Staff.
10:00 pm OA Call Out – all Units meet at Campfire.
11:00 pm Lights out and taps.

Sunday – May 18, 2025

6:30 am Wakeup
7:00 am Breakfast
8:00 am Scouts Own Service
9:00 am Flags: Closing Ceremony with Awards
10:00 am Disc Golf Tournament (optional)
12:00 pm Lunch
2:00 pm Begin tear down, clean up, and leave.
Dismantle rope bridge.

A Camporee staff member must inspect a unit's campsite before departure.

DISC GOLF MERIT BADGE Requirements

First Aid 1: Discuss safety on the golf course. Show that you know first aid for injuries or illnesses that could occur while golfing, including lightning, heat reactions, sunburn, dehydration, blisters, animal or bug bites, poison ivy exposure, sprains, and strains.

Option 2: Disc Golf

A. Study the “PDGA Official Rules of Disc Golf” now in use.

- (1) Tell about the six areas of Courtesy (812).
- (2) Describe the seven areas of Scoring (808).

B. Tell about your understanding of the “PDGA Disc Golfer’s Code.”

C. Do the following:

- (1) Tell about the history of disc golf and why it is an inclusive game.
- (2) Discuss with your counselor the contributions Ed Headrick made to the sport of disc golf.
- (3) Describe the evolution of disc design.
- (4) Tell about the accomplishments of a top disc golfer of your choice.

D. Do the following:

- (1) Tell how disc golf can contribute to a healthy lifestyle, mentally and physically.
- (2) Tell how a disc golf exercise plan can help you play better. Show two exercises that would help improve your game.

E. Show the following:

- (1) A good throwing grip
- (2) A good runup (X-step) when throwing a disc
- (3) Backhand shot
- (4) Forehand shot
- (5) Overhand shot
- (6) Rolling shot
- (7) A good (in-line) putting stance
- (8) A good straddle putting stance
- (9) A good putting grip
- (10) A good putting motion & follow through
- (11) The proper use of a mini-marking disc

F. Play a minimum of 18-holes of disc golf with another disc golfer about your age and with your counselor, or an adult approved by your counselor. Do the following:

- (1) Follow the “PDGA Official Rules of Disc Golf.”
- (2) Practice good disc golf etiquette.
- (3) Show respect to fellow disc golfers and other people in the park along with any wildlife, trees, and plants on the property.

G. Find out about three careers related to disc golf. Pick one and identify the education, training, and experience required for this profession. Discuss this with your counselor and explain why this interests you.

GEOCACHING MERIT BADGE Requirements

1. Do the following:

(a) Explain to your counselor the most likely hazards you may encounter while participating in geocaching activities, and what you should do to anticipate, help prevent, mitigate, and respond to these hazards.

(b) Discuss first aid and prevention for the types of injuries or illnesses that could occur while participating in geocaching activities, including cuts, scrapes, snakebite, insect stings, tick bites, exposure to poisonous plants, heat and cold reactions (sunburn, heatstroke, heat exhaustion, hypothermia), and dehydration.

(c) Discuss how to properly plan an activity that uses GPS, including using the buddy system, sharing your plan with others, and considering the weather, route, and proper attire.

2. Discuss the following with your counselor:

(a) Why you should never bury a cache

(b) How to use proper geocaching etiquette when hiding or seeking a cache, and how to properly hide, post, maintain, and dismantle a geocache

(c) The principles of Leave No Trace as they apply to geocaching

3. Explain the following terms used in geocaching: waypoint, log, cache, accuracy, difficulty and terrain ratings, attributes, trackable. Choose five additional terms to explain to your counselor.

4. Explain how the Global Positioning System (GPS) works. Then, using Scouting's Teaching EDGE, demonstrate to your counselor the use of a GPS unit. Include marking and editing a waypoint, changing field functions, and changing the coordinate system in the unit.

5. Do the following:

(a) Show you know how to use a map and compass and explain why this is important for geocaching.

(b) Explain the similarities and differences between GPS navigation and standard map-reading skills and describe the benefits of each.

6. Describe to your counselor the four steps to finding your first cache. Then mark and edit a waypoint.

7. With your parent's permission*, go to www.geocaching.com. Type in your city and state to locate public geocaches in your area. Share with your counselor the posted information about three of those geocaches. Then, pick one of the three and find the cache.

8. Do ONE of the following:

(a) If a Cache to Eagle® series exists in your council, visit at least three of the locations in the series. Describe the projects that each cache you visit highlights, and explain how the Cache to Eagle® program helps share our Scouting service with the public.

(b) Create a Scouting-related Travel Bug® that promotes one of the values of Scouting. "Release" your Travel Bug into a public geocache and, with your parent's permission, monitor its progress at www.geocaching.com for 30 days. Keep a log, and share this with your counselor at the end of the 30-day period.

(c) Set up and hide a public geocache, following the guidelines in the Geocaching merit badge pamphlet. Before doing so, share with your counselor a three-month maintenance plan for the geocache

where you are personally responsible for those three months. After setting up the geocache, with your parent's permission, follow the logs online for 30 days and share them with your counselor. You must archive the geocache when you are no longer maintaining it.

(d) Explain what Cache In Trash Out (CITO) means, and describe how you have practiced CITO at public geocaches or at a CITO event. Then, either create CITO containers to leave at public caches, or host a CITO event for your unit or for the public.

9. Plan a geohunt for a youth group such as your troop or a neighboring pack, at school, or your place of worship. Choose a theme, set up a course with at least four waypoints, teach the players how to use a GPS unit, and play the game. Tell your counselor about your experience, and share the materials you used and developed for this event.

Model Campsite Competition

Unit: _____ Campsite: _____ Date: _____

SITE SELECTION AND TENT PLACEMENT (10 points total) _____

- ☐ Takes advantage of ground slope, no ditching. Avoids insects, poison ivy, danger from overhead. (5)
- ☐ Camp arranged with unobstructed travel pathways for safe emergency evacuation (5)

SHELTER (10 points total) _____

- ☐ Tents properly erected; trim, securely anchored, guy lines flagged. (5)
- ☐ Cover for cooking; properly erected, securely anchored, provides for drainage, guy lines flagged. (5)

FIRE, FIREWOOD, AND WOOD TOOLS (40 points total) _____

- ☐ Fire site a safe distance from tents, etc.; adequately contained. (5 ft. radius cleared around fire) (10)
- ☐ Adequate fire buckets and/or other firefighting equipment are available. (10)
- ☐ Firewood protected from rain and dampness. (5)
- ☐ Wood tools sharp and properly stored. (5)
- ☐ Axe yard specifically located and adequately marked off. (min.1-2/Troop) (10)

HEALTH AND SAFETY (65 points total) _____

- ☐ Proper disposal of garbage. Bear Aware. (5)
- ☐ Food adequately protected from contamination and spoilage. (5)
- ☐ Food and aromatics secured from bears and mini bears (5)
- ☐ Dish washing practices result in clean pots, plates, etc. (5)
- ☐ Cooking equipment stored off ground and clean. (5)
- ☐ Clean water is available. (5)
- ☐ Location of adequate first aid kit visible to all. (10)
- ☐ Campsite is clean and in order. (10)
- ☐ Personal equipment is neat and stored properly. (uniform by patrol) (10)
- ☐ Ground cloth under bed or tent. (5)

CAMP IMPROVEMENTS (20 points total) _____

- ☐ U.S. and troop flags properly displayed. (U.S. Flag on the right side of the entrance to a person standing in the entrance facing out of camp.) (10)
- ☐ Campsite improvements/campcraft. Created with natural material and put to practical use to make the campsite more comfortable and convenient. Examples are built-up fireplace, utensil rack, pack rack, table, seat, boot scraper, fire bucket holder, tripod, wash basin, pot rack over fire, etc. (10)

PATROL ORGANIZATION AND OPERATION (40 points total) _____

- ☐ Evidence of separate patrol sites. (10)
- ☐ Scout meals prepared by patrols, not by adults. (10)
- ☐ Patrol menu posted in patrol site and kept dry. (10)
- ☐ Patrol duty roster posted on patrol site and kept dry. (10)

CONDUCT (15 points total) _____

- ☐ Conduct in keeping with the Scout Oath or Law. (15)

TOTAL POINTS (200) _____

2025 Scout Berry Delicious Dessert Competition

Create - with any method - a Berry Delicious Dessert!

1. Starting at 7:30 PM Saturday each patrol has 10 minutes. Sign up and check the schedule posted in the District Campsite for presentation time. Scouts will serve/present on a plate - a Berry Delicious Dessert. Troops may present as many entries as they wish. Entries can be presented however they wish.
2. Score will be combined from the following categories. The high score wins.

Criteria for judging:

A. Taste (15 total points) and appearance

1 - Unpleasant 5 - Plain 10 - Outstanding

Is the dish balanced or does an ingredient over power the dish? 1-5

B. The Cook of the Dish (15 total points)

Is the dish raw, overdone, or done just right? 1-10

Are the ingredients thoroughly mixed? 1-5

C. BONUS POINTS (Awarded at the Judge's discretion) (5-10 total points)

5-10 bonus points for challenging cooking technique or unique presentation.

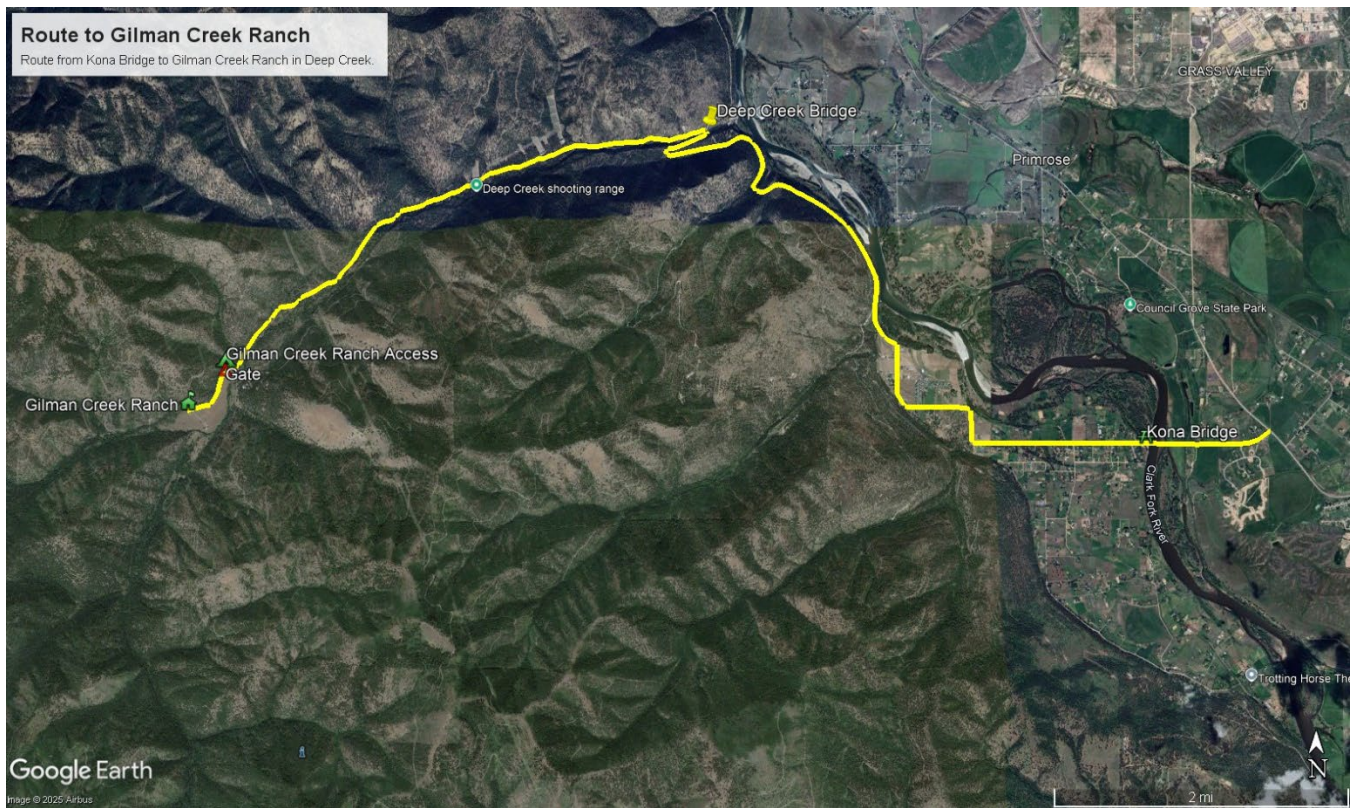
Examples: crepes, cakes, flambés, ice cream use (must be made at camp like backpacker's ice cream with plastic bag), etcetera. A presentation may include a themed or choreographed display.

3. Dessert must also be eaten by unit.
4. For health, safety, and time, certain ingredients may be prepared prior to arrival.

**1st , 2nd , and 3rd prizes based on scores will be awarded
30 points total plus 10 possible bonus points**

2025 Adult Dessert Competition

NO RULES – Just Dessert - Judged by your peers



Route to Gilman Creek Ranch

Route from Kona Bridge to Gilman Creek Ranch in Deep Creek.

Deep Creek Bridge

Deep Creek shooting range

Gilman Creek Ranch Access Gate

Gilman Creek Ranch

Primrose

Council Grove State Park

Kona Bridge

Clark Fork River

Trotting Horse Th

Google Earth

Image © 2025 Airbus

2 mi