



2024 Fall Camporee

October 11-13

Camp Warren Levis

“Search and Rescue”

Final Manual

Table of Contents

Welcome to Camp.....	3
Camporee Event Overview.....	4
Camporee Manual.....	4
Camporee Staff.....	4
Registration	5
Camporee Lunch	5
Coffee Klatch	6
Leader Training.....	6
Red Card Training	6
Clothing and Food Drive.....	6
Boone Trails Items.....	6
Event Guidelines.....	6
Camp Etiquette.....	10
Activities	11
Competitions	12
Activities	13
Scouts BSA Merit Badges	13
Webelos/AOL STEM Nova	13
Webelos/AOL Adventure	14
Schedule	14
Activity Locations	16
Event Map	17
SHOOTING SPORTS PERMISSION FORM	20

Welcome to Camp

Welcome to the Boone Trails' 2024 Fall Camporee - "Search and Rescue". We will have a lot of activities for Scouts BSA, Venturers and Webelos to have fun while providing advancement opportunities.

When arriving at camp, participants are asked to stop at the checkpoint to receive updated information from staff. Please be courteous and ask your troop leaders and guests to park in the designated parking areas and follow the traffic guidelines as outlined in this manual.

Upon arrival, please send your Scoutmaster and SPL to Headquarters (HQ) to check in along with a copy of your registration list. Check-in will begin at 5:30 PM and end at 9:00 PM Friday night. Headquarters will be at **Winter Lodge**.

There will be an opening leaders' meeting on Friday night. During this meeting, staff will provide updates regarding all changes to this manual including plans for possible weather during the event. We will also review camp safety and emergency procedures including both weather and medical emergencies. Please be sure to send your Scoutmaster and SPL to the opening meeting for these important updates.

At checkout, please send your Scoutmaster and SPL to HQ when your campsite is clean including all gear stowed away and campsite inspected for trash. Staff will inspect your campsite and then release your troop and event package when completed.

Our Boone Trails camporee is youth led. During the camp, please listen to and follow the directions provided by the youth staff. If you have any questions or comments, please contact staff or visit HQ. We are here to make sure that your troop has a great time and look forward to our next District camping event. We welcome and appreciate your feedback along with suggestions for the future.

SENIOR STAFF FOR THIS EVENT:

- CAMPMASTER: Dylan Steur dsteurbsa@gmail.com
- ASST. CAMPMASTER: Connor McMaken
- SCOUT ACTIVITY LEAD: Nolan Heinzl
- CUB ACTIVITY LEAD: Wil Kline
- LOGISTICS: Nathan King
- ADULT YOUTH ADVISOR: Dax Nieders dnieders@kdarco.com
- CAMPING CHAIR: Dave Spies bsadspies@gmail.com

Camporee Event Overview

The Boone Trails 2024 Fall Camporee will be held at Camp Warren Levis on October 11-13. Scouts BSA and Webelos/AOL activities include rank advancement opportunities, merit badges, shooting sports, games, and many unique competitions. Registration includes a lunch for all participants catered by the OFP (if registered by October 6).

Camporee Manual

Planning for the camporee takes months and goes right up to opening night as staff adjusts for the availability of equipment, resources, counselors, and the weather. In order to publish information as soon as possible, a draft manual is provided for troop planning. A final manual will be published about a week before the camporee and updates will be announced at the opening leaders' meeting. Troop feedback based upon the draft manual is appreciated for review during the planning process.

Camporee Staff

Our District camporee is youth led. The Campmaster, senior staff, and many youth staff volunteers from troops around our District are excited about the event and working hard to ensure that every participant has a good time.

We welcome Scouts and adults to join staff and help plan events that your troop wants to attend. Meetings for this event are held on Wednesday night from 7:00 to 8:30 PM at the Weldon Spring Interpretive Center, 7295 MO-94 St. Charles, MO 63304. Scouts are asked to contact the Campmaster for meeting information.

Meeting dates are as follows:

Remaining Planning dates:	Oct 2	Oct 9
---------------------------	-------	-------

Registration

The event fee for this camporee will be **\$20 until online registration closes on October 6**. If you do not register by this date but still wish to attend, you may pay a fee of \$25 at the event. **The fee includes the event patch, program materials, lunch on Saturday by the Boone Trails OFP, and all activities (except shotgun). Please note that Saturday lunch is not guaranteed for registrations after Oct 6.** Event registration can be found on the Boone Trails District webpage.

Scouts also have the opportunity to purchase shotgun shooting during pre-registration and (if there are any remaining) at HQ on Friday night. The ticket price is \$5 for a five-round set (i.e., 5 shots plus 5 clays). There will be a maximum of 23 sets available for purchase.

Each Scout wishing to participate in Shooting Sports (archery, rifle, and shotgun) during the Camporee will need to have a completed Shooting Sports Permission Form (see the last page of this manual) turned into the HQ during check in on Friday night.

Additionally, preregistration will be available for merit badges to reserve a spot for your Scouts and so they can be prepared with any prerequisites. We're offering very exciting badges therefore, if your Scouts are interested in a badge please register as soon as possible; however, please also ensure that the limited number of reserved spots will be used. Any open merit badge after registration closes will be announced at the opening leaders' meeting.

Camporee Lunch

Lunch on Saturday is included with registrations made before Oct 6. After that, we will try to accommodate but cannot guarantee lunch since the food will be ordered. The planned lunch menu is BBQ pulled pork sandwich, chips, cookies and bottled water. A limited amount of pulled pork without BBQ sauce will be available. Plates and utensils will be provided. **Some accommodation for participants with dietary restrictions may be available by emailing Darrel Tadsen (dtadsen@aol.com).**

Adults/leaders are welcome to contact Darrel Tadsen (dtadsen@aol.com) at the Boone Trails O.F. Patrol or visit the OFP Saturday morning to review ingredient labels or ask any questions about the lunch.

Coffee Klatch

Adults are welcome to visit the OFP Coffee Klatch on Saturday morning to meet with fellow leaders and unit commissioners

Leader Training

Adult leader Scoutmaster/Assistant Scoutmaster training, pressurized fuel training, and Merit Badge Counselor training are planned for this camporee. Preregistration is available during registration, but walk-in registration will be available by visiting HQ on Saturday morning immediately after the opening flag ceremony.

Scoutmaster/Assistant Scoutmaster training and Merit Badge Counselor training will begin immediately after opening flag ceremony.

Pressurized fuel training will begin immediately after coffee klatch. Please bring a pressurized fuel item such as a stove or lantern for training.

Boone Trails Items

There will be unique Boone Trails items for sale at HQ including previous Boone Trails event patches. Please stop by HQ to see what is available.



Boone Trails adult leader patches will be available at HQ for \$3 each (while supplies last). All funds generated by the patch sale will be used by the Boone Trails District Advancement Committee.

Event Guidelines

1. The Scout Oath and Law will be our guide during this event.
2. Our camporee is youth led. Please listen to and follow the youth staff directions. If you have any questions or concerns, please visit the event headquarters (HQ).
3. All adults staying overnight in connection with a Scouting activity (the Camporee) must be currently registered as an adult volunteer or an adult program participant.
 - a. Adult volunteers must register in the position(s) they are serving in. For example, an adult volunteer attending the Camporee must be registered in a

unit, district, or council position. Registration as a merit badge counselor does not satisfy this requirement.

- b. An adult program participant is an individual aged 18 or older (most often aged 18-20) who is registered as a program participant in which youth members are also eligible to participate (for example Venturing, Sea Scouting, and Exploring).
4. Arrow of Light (AOL) Dens that would like to camp with a troop must provide their own two-deep leadership and follow all overnight camporee guidelines.
 5. Absolutely NO fireworks, personal firearms, weapons, alcohol or other drugs will be permitted at the camporee. Adults that need to smoke are asked to please make sure that they are out of sight of all Scouts.
 6. Camp Warren Levis has several sinkholes on property, the majority are marked off along the camp trails. All camping participants are directed to avoid standing near the edges of any sinkhole and not to enter the sinkhole. **A sinkhole can collapse without warning leading to injury or death.** Leaders need to review this concern with their Scouts.
 7. All troops must check in their Scouts and adults when arriving and then check out before leaving.
 - a. Each unit should present a roster of those present and those who are expected to arrive during the event. The roster should include, at a minimum, name and emergency contact name, phone number, and identification of any Scouts that are to be picked up before the conclusion of the event and by whom.
 - b. All participants are required to wear their wristband for the duration of the event.
 - c. Please review the Camper Security Policies (NCAP Standard AO-804) for more information, which is available as an attachment on the registration webpage.

8. Personal Vehicles

- a. All vehicles used in the camp must be operated in a safe and legal manner. All posted speed limits must be adhered to.
- b. Passengers must be seated in a seat and seatbelts used. No one may ride in a vehicle's cargo area.
- c. Please park in designated parking areas and be courteous to other troops. Vehicles should stay on camp roads unless given permission by the camp ranger, event adult advisor or event headquarters. Vehicles must stay out of pavilions and buildings. Roads must remain clear for emergency vehicles.
- d. If required for the event, vehicles staying overnight should post the parking pass visibly on the dash while the vehicle is within camp. If required, parking passes will be handed out by staff upon arrival or will be available at HQ.
- e. Anyone wishing to use a personal ATV, UTV, golf cart or similar vehicle on a GSLAC property and/or a GSLAC Scouting event must receive permission from the event adult advisor and camp ranger and have required training per GSLAC Motor Vehicle Policy.
- f. Vehicle operation should not interrupt or spoil the experience of any Scout or participant, or program presentation such as campfires, flag ceremonies, etc.
- g. Vehicles may only be operated after dark if equipped with working headlights.
- h. Follow the *Guide to Safe Scouting* including:
 - i. Youth drivers are prohibited. Must be 18 years of age or older.
 - ii. Transportation of passengers in a pickup or truck bed, recreational camper or towed trailer is prohibited. See limited exception for parade and hayrides.

9. Medical Care

- a. Every participant in a short-term event must have an up-to-date BSA Annual Health and Medical Record, with parts A and B completed. The BSA Annual Health and Medical Record for all in camp (scouts and adults) should be kept in a secure location accessible to the unit leader and the health officer.
- b. Camp staff and volunteer leaders may and should treat minor cuts, scrapes, or other minor injuries. Anything beyond their expertise should be sent to the Camp Health Officer.

- c. Please review the Short-Term Medical Care Policies (NCAP Standards HS-503 through HS-509) for more information, which is available as an attachment on the registration webpage.
10. Please review the Emergency Procedures (NCAP Standard AO-805), which is available as an attachment on the registration webpage.
11. The current camp requirements for safe fire building will be reviewed at the opening meeting. Troops are responsible for ensuring that any troop fires are built safely, managed and put out cold when finished.
12. The scout uniform should be worn during the camporee. We ask that you wear your field uniform during flag ceremonies. Your activity uniform may be worn at all other times. If you are a former staffer and just attending, please refrain from wearing your staff shirt or hoodie.
13. Troops must maintain the BSA guidelines for two-deep leadership and follow all other Youth Protection Training (YPT) guidelines.
14. The Buddy System is required at this event and Scouts should remain within the event boundaries.
15. Campsite size will be assigned based upon the number of participants included in your registration. Early registration is appreciated and will help staff better plan the campsite assignments and activities.
16. **To participate in any shooting sports activity (if available), participants will be required to attend the safety brief and bring a completed Shooting Sports Permission Form.**
17. Garbage and trash
 - a. Participants are expected to practice the Leave No Trace guidelines and properly dispose of all trash. Dumpsters are behind Swaim Hall.
 - b. Garbage and trash should be removed from the campsite daily.
18. All leaders and participants should read and follow the Greater St. Louis Area Council (GSLAC) BSA guidelines for COVID-19.
19. There will be NO fighting (verbally or physically) at this event. Any issues should be reported to staff at HQ.

Camp Etiquette

Based upon feedback from previous events, a few common camping etiquette practices help improve the enjoyment for all participants. Experienced campers are asked to share and promote these practices within their troop.

1. It is preferable and safer to walk around another troop's campsite rather than walk through the campsite. If you must walk through a campsite, it is courteous to first ask for permission.
2. Please observe quiet hours between lights-out and reveille. Between those hours, please keep noise from conversations, music, cooking equipment, latrine doors and vehicles to a minimum so that all can get a good night's sleep.
3. Please observe surrounding campsites and the wind before building a fire. Fires built too close to another campsite risk the possibility of burning holes in tents from wind carried embers.
4. Follow Leave No Trace guidelines and keep the camp clean of trash.
5. Troops that arrive early should be courteous when setting camp and leave room for later arriving neighbors by not spreading out beyond their designated area.

Activities

SESSION 1 (8:15 am - 11:45 am)

- EMT Memorabilia Display
- Missouri Army Nat'l Guard Medical Display
- Shooting Sports
 - Rifle
 - Knife and Hawk
 - Archery
 - BB-Guns
 - Wrist Rockets
- Games
 - Cornhole & Washers
 - Kick Ball / Capture the Flag
 - Gaga Ball
 - Kubb
 - Frisbee Toss
 - Bocce Ball
 - Minuteman Bar
 - Chess
- Climbing
 - Bouldering Wall
 - Climbing Tower
 - Crate Stacking
- Canoeing
- Fishing
- Competitions
 - Top Shot
 - Frisbee Golf Contest
 - Personal Fitness Challenge
- Training
 - SM/ASM Training
 - Pressurized Fuel
 - Merit Badge Counselor

SESSION 2 (1:00 pm - 4:00 pm)

- EMT Memorabilia Displays
- Shooting Sports
 - Rifle
 - Knife and Hawk
 - Archery
 - BB-Guns
 - Wrist Rockets
 - Shotgun (ticket required)
- Games
 - Cornhole & Washers
 - Kick Ball / Capture the Flag
 - Gaga Ball
 - Kubb
 - Frisbee Toss
 - Bocce Ball
 - Minuteman Bar
- Climbing
 - Bouldering Wall
 - Climbing Tower
 - Crate Stacking
- Canoeing
- Fishing
- Competitions
 - Top Shot
 - Frisbee Contest
 - Canoe Race
 - Personal Fitness Challenge
 - Foil Pack Cookoff
 - Chess

SESSION 3 (Saturday Evening Program)

- Campfire

Competitions







- Top Shot: There will be separate Archery Top Shot and Rifle Top Shot competitions based upon the Highest Score in the respective competition. Each Scout gets one (1) “round” and must state BEFORE THEY SHOOT that the round is for top shot (one try only per Scout). Scoring will be based on the individual events normal score system. Scouts only.
- Foil Pack Cookoff: All entries must be cooked in an aluminum foil and must be cooked from scratch – no processed reheated store-bought meal. The entry must be planned, prepared, and cooked by either Scouts or Adults and will be judged separately. Staff will judge entries on Taste, Quality, and Creativity. The entry must be brought to HQ by 3:00 pm on Saturday.
- Fire Building Skill: Whoever makes a fire fastest that burns the string wins - 1ft up. Must use natural material for fuel found at CWL. The goal is to use only 1 match to start the fire. Time plenty added for each additional match needed.
- Fitness Competition: 25 jumping jacks, 15 pushups, 20 sit-ups, 15 squats and 10 burpees
- Partner Carrying Relays – Relays require using SAR carrying techniques
- Team Building Race: Team games - Step through spider web blindfolded + minefield + chair rope (rope on 2 chairs, each person must get over w/o touching rope and still touching each other)
- Chess: Win the bracket competition. Games will be 15 minutes long. After time has expired, the remaining pieces will be scored to determine the winner (Pawn=1, Knight=3, Bishop=3, Rook=5, and Queen=9 points). Open chess play in the morning and competitions in the afternoon.
- Rescue Rope Throwing Contest: Distance and Accuracy determines the winner.
- Frisbee Throwing for accuracy: Closest to the target wins the contest.
- Fishing Competition: Longest fish caught wins.
- Canoe Race: the team with the fastest time over the course wins the contest.
- Decorated Adult Beard Contest – Judged by Staff at Lunch
- Adult Musical Chairs at Campfire

Activities

- Shotgun: Scouts have the opportunity to purchase shotgun shooting tickets during pre-registration and (if there are any remaining) at HQ on Friday night. The ticket price is \$5 for a five-round set (i.e., 5 shots plus 5 clays). There will be a maximum of 23 sets available for purchase. Tickets that have not been used before 3:00 PM will be forfeit and remaining rounds will be on a first-come basis.

Scouts BSA Merit Badges

Merit badge spots can be reserved online along with camporee registration. Remaining spots (if any) will be announced during the opening leader's meeting on Friday night. Scouts are asked to bring an adult leader signed blue merit badge card to the merit badge class and complete any prerequisites as noted below.

	Health Care Professions	Prerequisites: 5 a-f, and 9
	Emergency Preparedness	Prerequisites: 1 st Aid MB, 2c, 6 a-c, 7 a, b, 8b
	Fire Safety	Prerequisites: None
	Safety	Prerequisites: 2a-c, 3b, 4, 6
	Signs, Signal, and Code	Prerequisites: 3a, 5a, 5b, 10 (all requirements handwritten)
	Wilderness Survival	Prerequisites: 5. bring kit, 8. bring picture or SM sign-off, 11. Proper clothing for the weather



Search and Rescue

Prerequisites: None
Come prepared with a day bag, water, writing tools and a small notebook.

AOL STEM Nova

AOLs will have the opportunity to participate in a STEM Nova during this event



AOL Adventure: Tech Talk

AOL Activities:

- 1st Aid Baseball
- Pool Noodle Marble Race
- ??? As time allows

Schedule

FRIDAY

- 5:30 pm Check-in opens at HQ
- 9:00 pm Check-in closes
- Opening Leaders' Meeting starts

11:00 pm Movie night starts (bring a chair)
Lights out

SATURDAY

6:00 am Reveille
7:30 am Flag ceremony at HQ and morning announcements
8:15 am Activities open and Merit Badges start
AOL Nova Morning Session Starts; followed by AOL Adventure
Scoutmaster/ASM training starts (Adults/Leaders)
Merit Badge Counselor training starts (Adults/Leaders)
9:00 am Coffee Klatch by OFP (Adults/Leaders)
Pressurized fuel training (Adults/Leaders)
11:45 am Activities close
12:00 pm Lunch by OFP
Special activities during lunch
1:00 pm Activities open
Chess Tournament Starts
3:00 pm Bring Foil Pack creation to HQ to be judged
Patrol Flag Competition Submissions judged
4:00 pm Activities close
4:30 pm All Campfire sheets are to be turned into HQ
5:00 pm Dinner at campsites
6:15 pm Flag ceremony at HQ
7:00 pm Religious Services start
8:00 pm Religious Services end
8:15 pm Campfire starts
10:00 pm Campfire ends
11:00 pm Lights Out

SUNDAY

6:00 am Reveille
7:30 am Closing Flag Ceremony at HQ
8:00 am Check-out begins at HQ
11:00 am Camp Closed

Activity Locations

FRIDAY

Check-in	HQ at Winter Lodge
Movie Night	Winter Lodge
Opening Leaders' Meeting	Swaim Lodge

SATURDAY

Opening Flag Ceremony	Winter Lodge
Coffee Klatch	Winter Lodge
Lunch by OFP	Pioneer Field
Adult Leader Training	Winter Lodge
Red Card Training	TBA

Merit Badges

Health Care Professionals	Swaim Porch
Emergency Preparedness	Chapel & Amph.
Fire Safety	Winter Lodge
Safety	Pioneer Fld Pav
Signs, Signal, & Codes	Swaim Lodge
Wilderness Survival	Swaim Porch
Search & Rescue	Pioneer Field

AOL Adventures	Rotary Campsite
AOL Nova	
Optimist Campsite	

Competitions:

• Top Shot	Ranges
• Frisbee Contest	Pioneer Field
• Canoe Race	Waterfront
• Personal Fitness	Pioneer Field
• Foil Pack Cookoff	Winter Lodge
• Adult Beard	Winter Lodge

Religious Services:

• Catholic	Swaim Lodge
• Protestant	Chapel
• Scouts Own Service	Eco Lodge

Campfire:	Amphitheater
-----------	--------------

SUNDAY

Closing Flag Ceremony	HQ at Winter Lodge
Check-Out	HQ at Winter Lodge

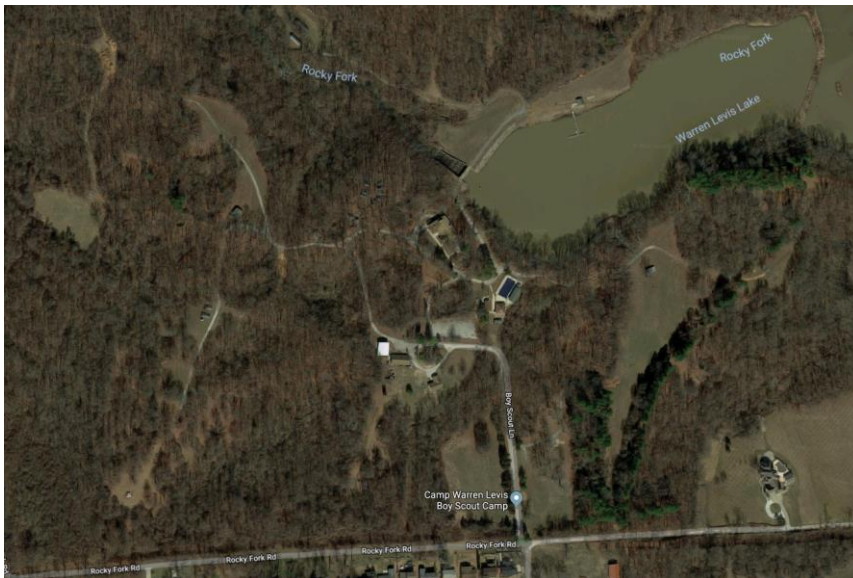
- EMT Memorabilia Area
- Pool

Activities:

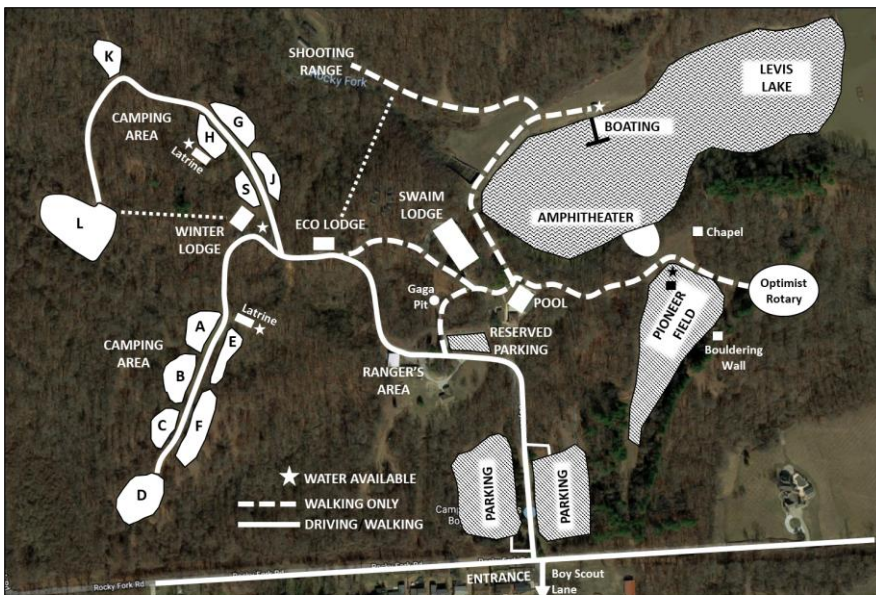
- Knife and Hawk Archery/BB Range
- Archery Archery Range
- BB-Guns BB-Gun Range
- Wrist Rockets Archery/BB Range
- Rifle Rifle Range
- Shotgun Shotgun Range
- Gaga Ball Gaga Pit
- Canoeing / Fishing Waterfront
- Climbing Tower Climbing Tower
- Bouldering Wall Pioneer Field
- Crate Stacking Bouldering Wall
- Cornhole/Washer Pioneer Field
- Kick Ball Pioneer Field
- Capture the Flag Pioneer Field
- Slinky's/Jacks/Marbles Pioneer Field
- Leatherworking Pioneer Field
- Duct tape Wallet Pioneer Field
- Kubb Pioneer Field
- Frisbee Toss Pioneer Field
- Minuteman Bar Pioneer Field
- Bocce Ball Pioneer Field
- Chess Pioneer Field

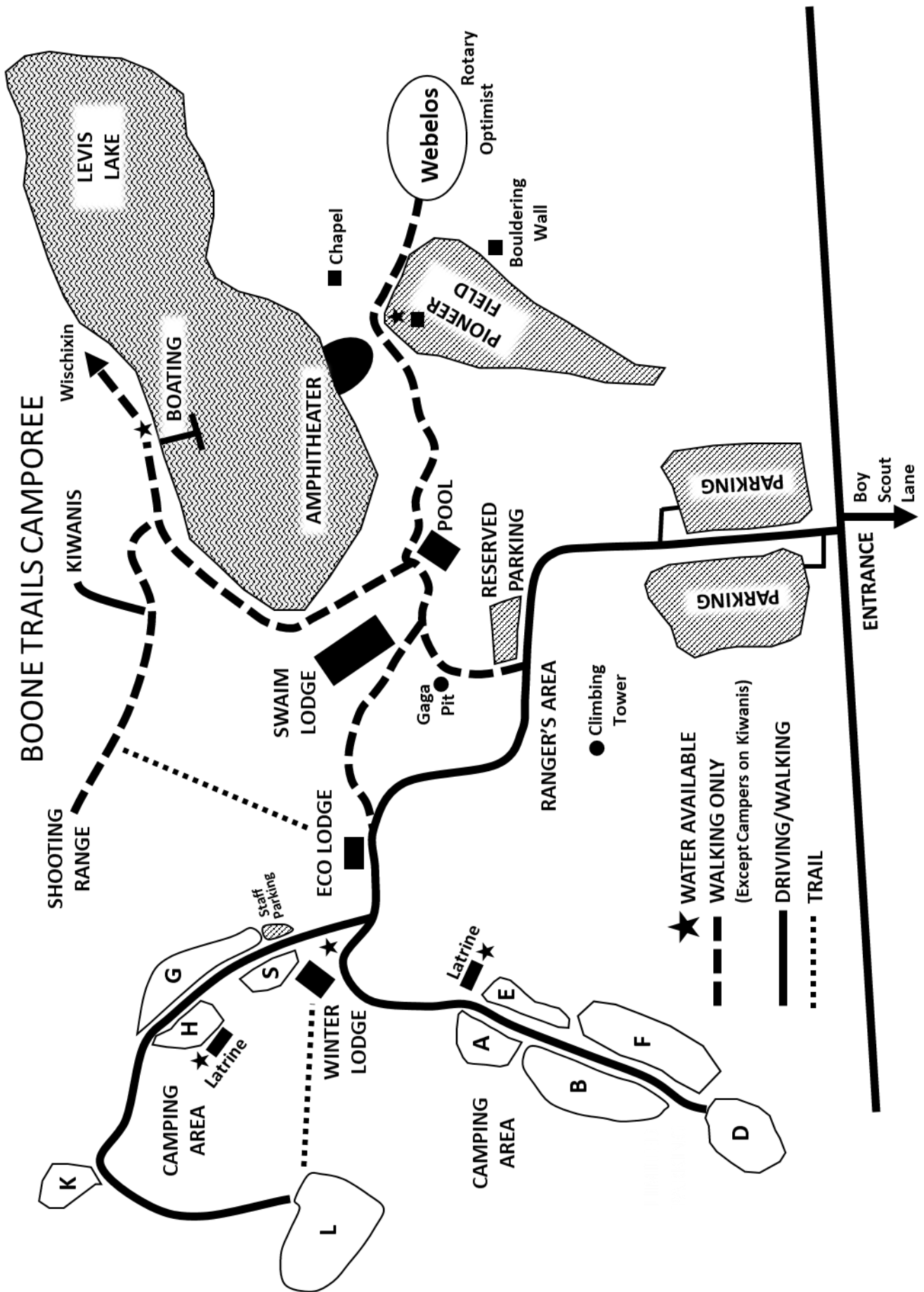
Event Map

Camp Warren Levis is about 40 miles from St. Charles in Godfrey, Illinois. Entrance to the camp is on Boy Scout Lane. From Route 3 (W. Delmar Ave), Boy Scout Lane will go through a residential area for about half a mile and then enter the camp.

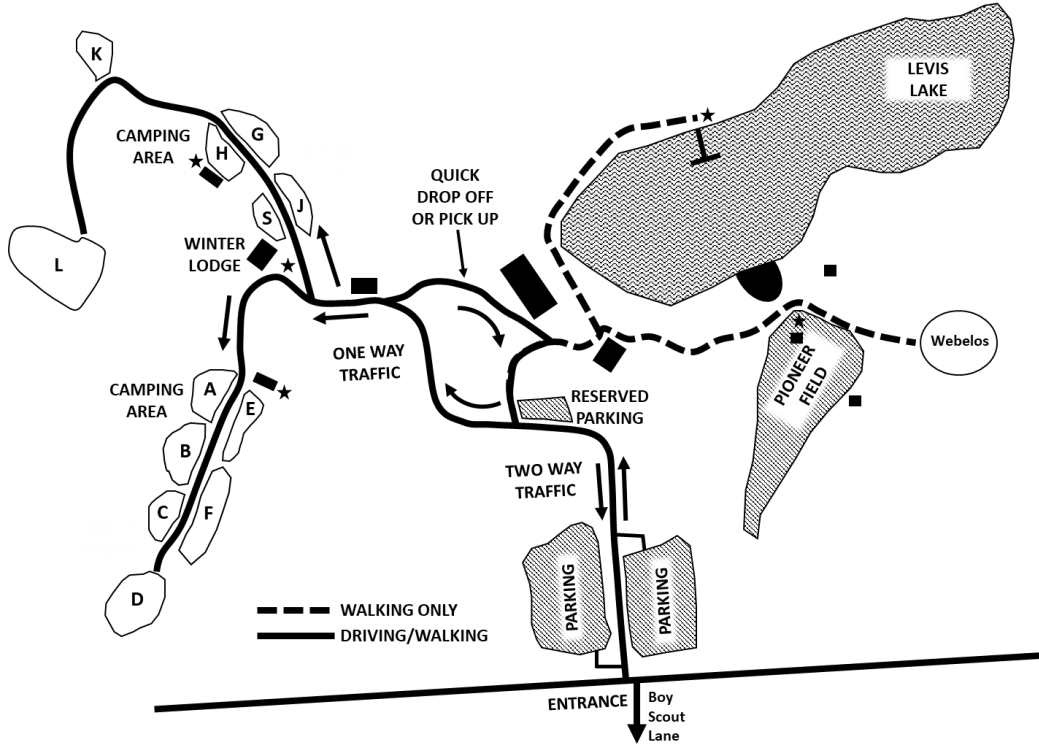


We have access to the entire camp for our camporee. Camping will generally be on the West side and activities will mostly be around Pioneer Field and the lake. Events and the schedule have been planned to get the most out of the camp facilities while limiting required travel between sides as much as possible. Nevertheless, participants are advised to prepare for some additional walking at this camporee similar to a summer camp.





Parking and Friday Night Traffic Plan



The main parking lots are located in the front of the camp. Campers are encouraged to park in this area. All cars parked past this main parking area should plan to remain in place during the camporee. Troops should plan to limit campsite parking as much as possible to conserve space for camping. Any cars parked in the camping area should be completely within the troop campsite.

Since the main parking lots are a distance from the campsites, all campers are encouraged to combine camping gear into their troop trailer and/or a support vehicle. A limited "Quick Drop Off or Pick Up" area is indicated on the map above for vehicles that are not staying the weekend but have a significant amount of equipment that needs to be dropped off closer to the campsites.

Most of the roads in camp are sized for one-way traffic as shown in the map above and can be rough in areas.

Provisions are being made for Troops to drop off their troop trailer early. Troops planning to drop off their trailer before 5:30 pm Friday should check the Boone Trails camporee page or contact venegoni1910@gmail.com for their campsite assignment.

SHOOTING SPORTS PERMISSION FORM

Boone Trails District (Unit, District or Council) will be conducting an open shooting experience. In this program, Scouts will be able to participate in archery, rifle, shotgun, and/or pistol (Venture or Sea Scouts only) programs under the direction of an NRA Range Safety Officer, NRA certified instructors, or USA Archery Level 1 Instructor.

Scouts will be required to wear appropriate protection equipment at all times while on the range. Scouts are expected to abide by all safety rules and the instructions of the Range Safety Officer(s) and rifle, pistol, shotgun, archery instructor(s).

I, the undersigned, give my child, _____, permission to participate in this program. I understand that participation in the activity involves a certain degree of risk. I have carefully considered the risk involved and have given consent for my child to participate in the activity. I understand that participation in the activity is entirely voluntary and requires participants to abide by the rules and standards of conduct. I release the Boy Scouts of America, the local council, the activity coordinators, and all employees, volunteers, related parties, or other organizations associated with the activity from any and all claims or liability arising out of this participation. For safety, my child and I agree that they will do the following or they will be removed from the program. I understand that any additional cost associated with participation in this program will not be refunded if my child is removed for not following the rules below.

1. Complete a range safety briefing.
2. Wear all safety gear at all times while on the range.
3. Follow all the safety rules provided in the briefing.
4. Follow the instructions of the Range Safety Officer(s) and rifle, pistol, shotgun, and archery instructor(s).
5. Do not handle the firearms until instructed to do so by the instructor(s).
6. Is a registered Venturer or Sea Scout (for pistol programs).

Participant signature _____ Date: _____

Parent/guardian signature _____ Date: _____

Parent/guardian printed name _____

Home phone _____ Cell _____