

# Winter Camp

**LEADER GUIDE**

**DECEMBER 26 - 29, 2024**

**RHODES FRANCE SCOUT RESERVATION**



GREATER ST. LOUIS AREA COUNCIL  
SCOUTING

# GSLAC Winter Camp

## **What is Winter Camp?**

Winter Camp is a short-term camp experience for Scouts BSA members. Scouts will be able to work on advancement and merit badges similar to Summer Camp. Scouts also get to enjoy one of the GSLAC Camp Properties in the winter! Scouts may participate with their Troop or as a provisional attendee (individually with camp-provided adult leadership).

## **Where and When is Winter Camp?**

Winter Camp 2024 will be held at Rhodes France Scout Reservation from December 26 - 29. Rhodes France is located just outside of Pana, Illinois.

## **Arrival and Departure**

Units and provisional participants should plan to arrive at Rhodes France between 2:00pm and 4:00pm on December 26th. Departure will be by 9:30am on December 29th. Upon arrival unit leaders and provisional Scouts must check-in at the Registration Building.

## **Food and Food Service**

Units have the option of choosing to eat in the dining hall with meals provided, or they can bring their own meals and cook in their campsites. Provisional Scouts will eat in the dining hall. If eating in the Dining Hall, please be sure to indicate any special dietary restrictions as part of your registration.

## **Housing**

All participants must provide their own camping gear. This includes tents, cots, and bedding. Make sure to bring warm sleeping gear!

## **Facilities & Showers**

Some portions of the camp are already winterized, but participants will have access to everything they need. The camp showerhouse will be open for showers\* and restrooms. Latrines and campsites will not have water - but the central area of camp will.

*\*Showers will be available unless weather is consistently below freezing.*



# GSLAC Winter Camp

## Winter Camp Fees

Youth with Meals	\$150.00
Adult with Meals	\$80.00
Youth without Meals	\$120.00
Adult without Meals	\$50.00
Provisional Scout	\$150.00

## Registration

Units or individual participants can register online at <https://scoutingevent.com/312-wintercamp>.

## Pre-Camp Leader Meeting

All unit leaders are encouraged to participate in the Pre-Camp Leader Meeting on Tuesday, December 10th at 7:00pm. This meeting will be held via Zoom. This is a great opportunity for leaders to ask questions and get any additional information necessary for a fantastic experience.

## Health & Safety

All participants MUST have parts A & B of the BSA Annual Health and Medical Record at camp for Winter Camp. The Rhodes France health office will be staffed during the camp and participants will have access to medical assistance 24 hours a day. Units must have a locking container for any prescription medications. Be sure Scouts and Leaders are prepared for cold temperatures. Scouts will also be expected to utilize the buddy system at all times at camp. If you have any specific health and safety concerns, please contact Camp Director Matt Kaufman at [matt.kaufman@scouting.org](mailto:matt.kaufman@scouting.org).

## Trading Post

The Rhodes France Trading Post will be open during Winter Camp and is stocked with Scouting items, snacks, and other souvenirs. Cash, checks, and credit cards are accepted.



# GSLAC Winter Camp

## Winter Camp Environment

At Winter Camp, all attendees bring their own tent and bedding. Some campsites have wooden platforms that campers can set up on. Only Spinner Campsite has electricity available, so leaders who use a CPAP machine should plan to bring a battery. Water will not be on in the campsites, but the pit latrines can be used. Water is available at the Food Service Building. A suggested packing list is included in this guide.

## Vehicles at Camp

All vehicles must remain in the parking lot with the exception of the unit trailer and the vehicle pulling it. Scouts and leaders should plan to walk to all activities.

## Campsite Assignments

Units can list their campsite preference during their online registration. The Camp Administration will do their best to accommodate these requests, but they are not guaranteed.

## Uniforms at Winter Camp

Warmth and safety are the priority at Winter Camp. Scouts and leaders should dress for warmth and comfort. Uniforms are NOT required at Winter Camp.

## Volunteers Needed

Winter Camp is a volunteer-led program. Some members from our Summer Camp Staff will return to help lead program and merit badge sessions, work in the kitchen, and ensure things run smoothly, but we need other adults to volunteer! If you are interested in serving on the Winter Camp Staff, please contact Program Director Sharon Renfro at [renfro6@gmail.com](mailto:renfro6@gmail.com) or Camp Director Matt Kaufman at [matt.kaufmanescouting.org](mailto:matt.kaufmanescouting.org). Thank you in advance for sharing your expertise!



# Winter Camp Program

## Check-In Process

Units should plan to arrive at Rhodes France Scout Reservation between 2:00pm and 4:00pm on December 26. An adult leader must check-in at the Registration Building near the parking lot. Groups will then be guided through the remainder of check-in and taken to their campsites. At least one adult and youth leader should plan to attend the opening Leader Meeting at 4:30pm in the Dining Hall.

## December 26

2:00pm - 4:00pm	Arrival & Check-in
4:30pm	Leader Meeting at Dining Hall
6:10pm	Flag Lowering at Flag Poles
6:15pm	Dinner at Dining Hall
7:20pm	Gather for Opening Campfire at Flag Poles
10:00pm	Quiet Time

## December 27 & 28

7:55am	Flag Raising at Flag Poles
8:00am	Breakfast at Dining Hall
9:00am	Session 1
12:15pm	Gather for Lunch at Flag Poles
2:00pm	Session 2
5:00pm	Free Time
6:10pm	Flag Lowering at Flag Poles
6:15pm	Dinner in Dining Hall
7:15pm	Evening Programs
10:00pm	Quiet Time

## December 29

8:00am	Breakfast (delivered to campsites)
9:00am	Check-Out and Departure*

\*A Staff member will be at your campsite to help with check-out. They will also deliver your check-out packet.



# Winter Camp Program

## Winter Camp Theme Days

Certain days at Winter Camp will have a special theme. Each Scout and adult is encouraged to participate in these special days! All we ask is that the costumes/props/etc remain Scout appropriate.

- **Friday, December 27th - Ugly Holiday Sweater Day!** Wear your ugliest holiday sweater!
- **Saturday, December 28th - Crazy Hat Day!** Wear your silliest hat for the day!

## Campfire Programs

All units will gather with the Winter Camp Staff on Thursday evening for our Opening Campfire program. Units will meet at the Flag Poles at 8:00pm and will be guided to the Firebowl for a fun program put on by the Camp Staff. On Saturday night, the Scouts in attendance will take the stage for the closing campfire program. Units should plan to present a song, skit, or other special talent with the crowd!

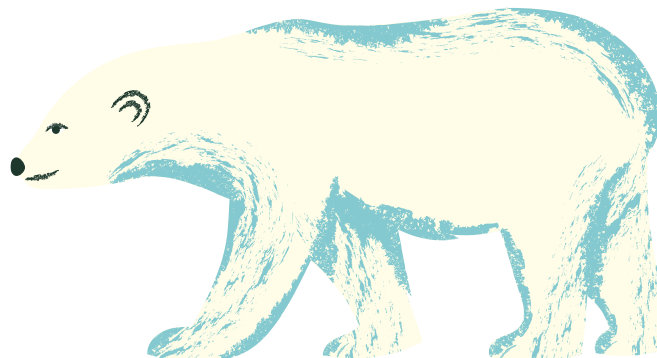
## Evening Programs

Special evening programs will take place at Winter Camp. These are open to all in attendance.

- **Friday - GAME NIGHT & KARAOKE!** All are invited to play games and sing karaoke! Bring your own or use some of ours. Magic, DND, etc...
- **Saturday - MOVIE NIGHT!** Join us after the Closing Campfire in the dining hall for a movie presentation and snacks!

## Winter Camp Polar Plunge

Join us for the Scout Polar Bear Plunge! Brave the icy waters with fellow Scouts and Scouters for an unforgettable adventure. Whether plunging or cheering, embrace the chill and make lasting memories!



# Winter Camp Program

## Merit Badge Schedule

The following pages give the details of the Winter Camp Merit Badge and Activity Program.

Badges will take place in one of 3 sessions.

**Morning Session** - Friday & Saturday, 9am - Noon

**Afternoon Session** - Friday & Saturday, 2:00pm - 5:00pm

Scouts are strongly encouraged to have the merit badge pamphlet and have read it for any class they are taking.

## Adult Leader Trainings

The following trainings will be available for adults attending Winter Camp (Looking to add more!).

- **Introduction to Outdoor Leader Skills** - This is one of the required trainings to be considered fully-trained as a Scoutmaster or Assistant Scoutmaster. This course will take place Friday (9am - 5pm) and Saturday (9:00am - Noon).
- **NRA Basic Rifle Shooting Course** - This is a basic NRA Course that is a required prerequisite for other courses. This course will take place Friday and Saturday from 1:00pm - 5:00pm. There is a \$40 class fee for this course.

Session 1 (9:00am - 12:00pm)	Session 2 (2:00pm - 5:00pm)
Merit Badge/Program	Merit Badge/Program
Archery	Archery
Chess	Camping (28th Only)
Citizenship in the Nation	Citizenship in Society (27th Only)
Cooking	Citizenship in the World
Environmental Science	Crate Stacking (Pick One Day)
Fire Safety	First Aid
Model Design & Building	Geocaching
Rifle Shooting	Law
Scouting Heritage	Photography
Search & Rescue	Radio
Shotgun Shooting	Signs, Signals & Codes
Wayfinder - 2nd Class	Wayfinder - 1st Class
	Wood Carving





# 2024 Scouts BSA Winter Camp at Rhodes France

## Class Catalog

### Event Contacts

Name	Title	Phone	Email
Matt Kaufman	Camping Director	217.429.2326	matt.kaufman@scouting.org

Registration opens September 26, 2024  
Visit [www.scoutingevent.com/312-wintercamp](http://www.scoutingevent.com/312-wintercamp) to register



BOY SCOUTS  
OF AMERICA®

GREATER SAINT LOUIS AREA COUNCIL





## Class Catalog

2024 Scouts BSA Winter Camp at Rhodes France at Rhodes France Scout Reservation

### Scouts BSA Winter Camp (Scheduled Classes)



#### WC1 Archery

Archery is a fun way for Scouts to exercise minds as well as bodies, developing a steady hand, a good eye, and a disciplined mind. This merit badge can provide a thorough introduction to those who are new to the bow and arrow - but even for the experienced archer, earning the badge can help to increase the understanding and appreciation of archery.

9-12 PM

**Days:** Fr Sa **Room:** Archery Range

**Maximum number of participants:** 8

2-5 PM

**Days:** Fr Sa **Room:** Archery Range

**Maximum number of participants:** 8

**Prerequisites:** None



#### WC16 Camping

Camping is one of the best-known methods of the Scouting movement. When he founded the Scouting movement in the early 1900s, Robert Baden-Powell encouraged every Scout to learn the art of living out-of-doors. He believed a young person able to take care of himself while camping would have the confidence to meet life's other challenges, too.

2-5 PM

**Days:** Sa **Room:** McCoy Village

**Maximum number of participants:** 15

**Prerequisites:** #3, #4b, #5e, #7b, #8d, #9 (bring documentation of your total camping experiences, in the form of reports of each trip; have the reports signed by your Scoutmaster. This can be pulled using the Activity Log in Scoutbook)



#### WC20 Chess

Chess builds critical thinking, forward thinking, and proper sportsmanship in young people.

9-12 PM

**Days:** Fr Sa **Room:** Handicraft Area

**Maximum number of participants:** 15

**Prerequisites:** None



#### WC15 Citizenship in Society

"Discussion" requirements will be either with a counselor and another individual (in accordance with Youth Protection Guidelines <https://www.scouting.org/health-and-safety/gss/gss01/>), or with your counselor and a small group (of Scouts), depending upon your preference.

2-5 PM

**Days:** Fr **Room:** McCoy Village

**Minimum Age:** 15

**Maximum Age:** 17

**Maximum number of participants:** 5

**Prerequisites:** #7, #8



#### WC13 Citizenship in the Nation

As Scouts fulfill the requirements for this merit badge, they will learn how to become active citizens are aware of and grateful for their liberties and rights, to participate in their governments and protect their freedom, helping to defend their country and standing up for individual rights on behalf of all its citizens.

9-12 PM

**Days:** Fr Sa **Room:** McCoy Village

**Maximum number of participants:** 15

**Prerequisites:** #5, #6, #7, #8

This badge requires extensive pre-work



#### WC14 Citizenship in the World

Scouts who earn the Citizenship in the World merit badge will discover that they are already citizens of the world. How good a world citizen each person is depends on his willingness to understand and appreciate the values, traditions, and concerns of people in other countries.

2-5 PM

**Days:** Fr Sa **Room:** McCoy Village

**Maximum number of participants:** 15

**Prerequisites:** #7

## Class Catalog

2024 Scouts BSA Winter Camp at Rhodes France at Rhodes France Scout Reservation



### WC2 Cooking

The Cooking merit badge introduces principles of cooking that can be used both at home or in the outdoors. Scouts who earn this badge will learn about food safety, nutritional guidelines, meal planning, and methods of food preparation, and will review the variety of culinary (or cooking) careers available.

9-12 PM **Days:** Fr Sa **Room:** Wayfinder Area  
**Maximum number of participants:** 15  
**Prerequisites:** #2c, #4, #5, #6



### WC19 Crate Stacking & Slacklines

Scouts sign up for 1 day to participate in these activities.

2-5 PM **Days:** Fr **Room:** McCoy Village  
**Maximum number of participants:** 10  
2-5 PM **Days:** Sa **Room:** McCoy Village  
**Maximum number of participants:** 10



### WC6 Environmental Science

While earning the Environmental Science merit badge, Scouts will get a taste of what it is like to be an environmental scientist, making observations and carrying out experiments to investigate the natural world.

9-12 PM **Days:** Fr Sa **Room:** Nature Area  
**Maximum number of participants:** 15  
**Prerequisites:** #3



### WC10 Fire Safety

The ability to use fire safely is essential to human survival. By earning this merit badge, Scouts will learn to use fire safely and responsibly, how to prevent home fires, and how to handle fire safely, as well as burn prevention, and camping safety.

9-12 PM **Days:** Fr Sa **Room:** Nature Area  
**Maximum number of participants:** 15  
**Prerequisites:** #6a, #6b, #12



### WC8 First Aid

First aid - caring for injured or ill persons until they can receive professional medical care - is an important skill for every Scout. With some knowledge of first aid, a Scout can provide immediate care and help to someone who is hurt or who becomes ill. First aid can help prevent infection and serious loss of blood. It could even save a limb or a life.

2-5 PM **Days:** Fr Sa **Room:** Wayfinder Area  
**Maximum number of participants:** 15  
**Prerequisites:** #5  
Scouts should review the conditions that must exist before performing CPR and be familiar with the CPR technique.



### WC23 Geocaching

The word geocache is a combination of "geo," which means "earth," and "cache," which means "a hiding place." Geocaching describes a hiding place on planet Earth - a hiding place you can find using a GPS unit. A GPS (Global Positioning System) unit is an electronic tool that shows you where to go based on information it gets from satellites in space.

2-5 PM **Days:** Fr Sa **Room:** Scoutcraft Area  
**Maximum number of participants:** 15  
**Prerequisites:** #7, #8



### WC5 Law

Earning this merit badge enables a Scout to learn about the history and kinds of laws, the purpose and methods of law enforcement, consumer protection agencies, emerging law, and careers in the legal profession.

2-5 PM **Days:** Fr Sa **Room:** Nature Area  
**Maximum number of participants:** 15  
**Prerequisites:** #4, #6

## Class Catalog

2024 Scouts BSA Winter Camp at Rhodes France at Rhodes France Scout Reservation



### WC22 Model Design and Building

Model making, the art of creating copies of objects that are either smaller or larger than the objects they represent, is not only an enjoyable and educational hobby: it is widely used in the professional world for such things as creating special effects for movies, developing plans for buildings, and designing automobiles and airplanes.

9-12 PM

**Days:** Fr Sa **Room:** Handicraft Area

**Maximum number of participants:** 15

**Prerequisites:** #5



### WC21 Photography

Beyond capturing family memories, photography offers a chance to be creative. Many photographers use photography to express their creativity, using lighting, composition, depth, color, and content to make their photographs into more than snapshots. Good photographs tell us about a person, a news event, a product, a place, a scientific breakthrough, an endangered animal, or a time in history.

2-5 PM

**Days:** Fr Sa **Room:** Nature Area

**Maximum number of participants:** 15

**Prerequisites:** #1a

Scouts should plan to bring a camera or use their smartphone



### WC12 Radio (2017 version)

Radio is a way to send information, or communications, from one place to another. Broadcasting includes both one-way radio (a person hears the information but can't reply) as well as two-way radio (where the same person can both receive and send messages).

2-5 PM

**Days:** Fr Sa **Room:** Handicraft Area

**Maximum number of participants:** 15



### WC3 Rifle Shooting

Unless a rifle is handled incorrectly or recklessly, it is not dangerous. A rifle, like any other precision instrument, is manufactured to perform a specific task and can do so at no risk to the user or others. By earning this badge, Scouts can develop their shooting skills while learning safe practices.

9-12 PM

**Days:** Fr Sa **Room:** Rifle Range

**Maximum number of participants:** 12

**Prerequisites:** #1f



### WC24 Scouting Heritage

Introduces youth to the history of the Boy Scouts of America. They'll learn it all - from Scouting's beginnings under Lord Baden-Powell to the history of their own troop.

9-12 PM

**Days:** Fr Sa **Room:** Scoutcraft Area

**Maximum number of participants:** 15

**Prerequisites:** #4, #5, #6



### WC7 Search and Rescue

The process and safety methods of working around specialized teams such as aircraft, canine, and aquatic rescue teams. Identifying differences between search and rescue environments, such as coastal, wilderness, rural, and urban landscapes. Determining when Universal Transverse Mercator (UTM) and latitude and longitude (Lat/Lon) should be used.

9-12 PM

**Days:** Fr Sa **Room:** Scoutcraft Area

**Maximum number of participants:** 15

**Prerequisites:** #4, #6a



### WC4 Shotgun Shooting

A shotgun is a precision instrument, designed to shoot a shot charge in a specific pattern to cover a designated area at a certain distance. Unlike a rifle, the bore of the shotgun is not rifled, so the shot emerging from the muzzle is not spinning.

9-12 PM

**Days:** Fr Sa **Room:** Shotgun Range


**Maximum number of participants:** 6

**Prerequisites:** #1f


## Class Catalog

2024 Scouts BSA Winter Camp at Rhodes France at Rhodes France Scout Reservation


---

 **WC9 Signs, Signals, and Codes**  
American Sign Language (ASL) is the third most used language in the United States. The Signs, Signals, and Codes merit badge will cover Morse code, ASL, Braille, signaling, trail markings, and other nonverbal communications. Did you know that some of these have even saved people's lives?  
2-5 PM **Days:** Fr Sa **Room:** Scoutcraft Area  
**Maximum number of participants:** 15  
**Prerequisites:** #7


---

 **WC17 Wayfinder - 2nd Class**  
Scouts BSA Second Class rank advancement. Not all requirements are covered.  
9-12 PM **Days:** Fr Sa **Room:** Wayfinder Area  
**Maximum number of participants:** 15

---

 **WC18 Wayfinder - First Class**  
Scouts BSA First Class rank advancement. Not all requirements are covered.  
2-5 PM **Days:** Fr Sa **Room:** Wayfinder Area  
**Maximum number of participants:** 15

---

 **WC11 Wood Carving**  
As with any art, wood carving involves learning the basics of design, along with material selection and tools and techniques, as well as wood-carving safety. The requirements of the Wood Carving merit badge introduce Scouts to an enjoyable hobby and that can become a lifetime activity.  
2-5 PM **Days:** Fr Sa **Room:** Handicraft Area  
**Maximum number of participants:** 15  
**Prerequisites:** #2a (Totin' Chip)  
Required Materials; Bring a pocket knife

## Class Catalog

2024 Scouts BSA Winter Camp at Rhodes France at Rhodes France Scout Reservation

### Scouts BSA Winter Camp - Adults (Scheduled Classes)



#### **WCA1 Introduction to Outdoor Leader Skills**

Introduction to Outdoor Leader Skills Training Course. This is one of the courses required to be considered fully-trained as a Scoutmaster or Assistant Scoutmaster.

The Introduction to Outdoor Leader Skills (IOLS) course builds and expands on the concepts and themes introduced in Scoutmaster Position-Specific Training and provides Scouters with the confidence to take youth into the outdoors.

9-5 PM

**Days:** Fr Sa

**Prerequisites:** Class will take place 9:00am - 5:00pm on Thursday and 9:00am - Noon on Saturday.



#### **WCA2 NRA Basic Rifle Shooting Course**

Students learn NRA's rules for safe gun handling; rifle parts and operation; ammunition; shooting fundamentals; range rules; shooting from the bench rest, prone, sitting, standing and kneeling positions; cleaning, and continued opportunities for skill development. Students will receive the Basics of Rifle Shooting handbook, NRA Gun Safety Rules brochure, Winchester/NRA Marksmanship Qualification booklet, take a Basics of Rifle Shooting Student Examination, and receive a course completion certificate.

1-5 PM

**Days:** Fr Sa **Room:** Rifle Range

**Additional Fee:** \$40.00

# Winter Camp Packing Lists

## Suggested Individual Packing List

- T-Shirts (1-2)
- Underwear (fresh pair each day)
- Socks (fresh pair for each day & extras)
- Long Thermal underwear (1-2)
- Long Pants (2-3)
- Long-sleeve shirt (2-3) or Jacket
- Hiking Boots or Sturdy Shoes
- Lightweight Shoes (Closed-toed)
- Shower Shoes
- Warm Coat or Jacket
- Stocking Cap or Beanie
- Gloves/Mittens
- Poncho/Rain Coat
- Towel
- Soap/Shampoo
- Lip Balm
- Deoderant
- Toothpaste & Toothbrush
- Other personal toiletries
- Comb or Hairbrush
- Laundry Bag
- Refillable Water Bottle
- Small pocketknife
- Backpack/Daypack
- Pencil/Pen
- Notebook/writing paper
- Merit Badge Pamphlets
- Tent
- Sleeping Bag
- Pillow
- Old Blankets (for insulation)
- Camp Mattress or Foam pad/cot
- Personal First Aid Kit
- Footlocker (for gear)
- Watch
- Flashlight
- Extra Batteries
- Spending Money (at least \$40)

## Suggested Unit Packing List

- Tents
- Water Cooler(s)
- US Flag
- Troop Flag
- Cooking Equipment (if cooking)
- First Aid Kit
- Brooms/Rake
- Tools (saws, axes, etc.)
- Lanterns
- Rope
- Tarps
- Dining Fly (most sites have pavilions)

## Items to Leave at Home

No personal firearms or ammunition are allowed at Scouting events. Personal bows are also not allowed. Alcoholic beverages and non-prescribed drugs are prohibited. Tobacco use and vaping are only allowed in designated areas. No fireworks are allowed. No pets are allowed.



# GSLAC Winter Camp

