



2024 Spring Camporee

April 26 - 28

Camp Warren Levis

“Scouting in the 1940s”

FINAL MANUAL

Table of Contents

Welcome to Camp.....	3
Camporee Event Overview	4
Camporee Manual.....	4
Camporee Staff	4
Registration	5
Camporee Lunch	5
Coffee Klatch	5
Leader Training.....	6
Red Card Training.....	6
Clothing and Food Drive.....	6
Boone Trails Items.....	6
Event Guidelines	7
Camp Etiquette	10
Activities	11
Competitions.....	12
Activities	12
Scouts BSA Merit Badges	13
Webelos/AOL STEM Nova.....	14
Webelos/AOL Adventure	15
Schedule	16
Activity Locations	17
Event Map	18
SHOOTING SPORTS PERMISSION FORM	21

Welcome to Camp

Welcome to the Boone Trails 2024 Spring Camporee - "Scouting in the 1940s". We will have a lot of activities for Scouts BSA, Venturers and Webelos to have fun while providing advancement opportunities.

When arriving at camp, participants are asked to stop at the checkpoint to receive updated information from staff. Please be courteous and ask your troop leaders and guests to park in the designated parking areas and follow the traffic guidelines as outlined in this manual.

Upon arrival, please send your Scoutmaster and SPL to Headquarters (HQ) to check in along with a copy of your registration list. Check-in will begin at 5:30 PM and end at 9:00 PM Friday night. Headquarters will be at **Winter Lodge**.

There will be an opening leaders' meeting on Friday night. During this meeting, staff will provide updates regarding all changes to this manual including plans for possible weather during the event. We will also review camp safety and emergency procedures including both weather and medical emergencies. Please be sure to send your Scoutmaster and SPL to the opening meeting for these important updates.

At checkout please send your Scoutmaster and SPL to HQ when your campsite is clean including all gear stowed away and campsite inspected for trash. Staff will inspect your campsite and then release your troop and event package when completed.

Our Boone Trails camporee is youth led. During the camp, please listen to and follow the directions provided by the youth staff. If you have any questions or comments, please don't hesitate to contact staff or visit HQ. We are here to make sure that your troop has a great time and looks forward to our next District camping event. We welcome and appreciate your feedback along with suggestions for the future.

SENIOR STAFF FOR THIS EVENT:

- CAMPMASTER: John Grogan john.s.grogan@gmail.com
- ASST. CAMPMASTER: Dylan Steur
- SCOUT ACTIVITY LEAD: Alex Derenski
- CUB ACTIVITY: Connor McMaken
- LOGISTICS: Ben Henry
- ADULT ADVISOR: Rick Hammond
- CAMPING CHAIR: Mike Venegoni venegoni1910@gmail.com

Camporee Event Overview

The Boone Trails 2024 Spring Camporee will be held at Camp Warren Levis on April 26 - 28. Scouts BSA and Webelos/AOL activities include rank advancement opportunities, merit badges, shooting sports, games, and many unique competitions. Registration includes a lunch for all participants catered by the OFP (if registered by April 21).

Camporee Manual

Planning for the camporee takes months and goes right up to opening night as staff adjusts for the availability of equipment, resources, counselors, and the weather. In order to publish information as soon as possible, a draft manual is provided for troop planning. A final manual will be published about a week before the camporee and updates will be announced at the opening leaders' meeting. Troop feedback based upon the draft manual is appreciated for review during the planning process.

Camporee Staff

Our District camporee is youth led. The Campmaster, senior staff, and many youth staff volunteers from troops around our District are excited about the event and working hard to ensure that every participant has a good time.

We welcome Scouts and adults to join staff and help plan events that your troop wants to attend. Meetings for this event are held on Wednesday night from 7:00 to 8:30 PM. Scouts are asked to contact the Campmaster for meeting information.

Tentative meeting dates are as follows:

- March 6
- March 13
- March 20
- March 27
- April 3
- April 10
- April 17
- April 24

Registration

The event fee for this camporee will be **\$20 until online registration closes on April 21**. If you do not register by this date but still wish to attend you may pay a fee of \$25 at the event. **The fee includes the event patch, program materials, lunch on Saturday by the Boone Trails OFP, and all activities (except shotgun). Please note that Saturday lunch is not guaranteed for registrations after April 21.** Event registration can be found on the Boone Trails District webpage.

Scouts also have the opportunity to purchase shotgun shooting during pre-registration and (if there are any remaining) at HQ on Friday night. The ticket price is \$5 for a five-round set (i.e., 5 shots plus 5 clays). There will be a maximum of 23 sets available for purchase.

Additionally, preregistration will be available for merit badges and Webelos Nova to reserve a spot for your Scouts and so they can be prepared with any prerequisites. We're offering very exciting badges and Nova that are sure to fill quickly. Therefore, if your Scouts are interested in a badge or Nova please register as soon as possible; however, please also ensure that the limited number of reserved spots will be used. Any open merit badge or Nova spots after registration closes will be announced at the opening leaders' meeting.

Camporee Lunch

A lunch on Saturday is included with registrations made before April 21. After that, we will try to accommodate but cannot guarantee lunch since the food will be ordered. The planned lunch menu is BBQ pulled pork sandwich, chips, cookies and bottled water. A limited amount of pulled pork without BBQ sauce will be available. Plates and utensils will be provided. Some accommodations for participants with dietary restrictions may be available by emailing Darrel Tadsen (dtadsen@aol.com).

Adults/leaders are welcome to contact Darrel Tadsen (dtadsen@aol.com) at the Boone Trails O.F. Patrol or visit the OFP Saturday morning to review ingredient labels or ask any questions about the lunch.

Coffee Klatch

Adults are welcome to visit the OFP Coffee Klatch on Saturday morning to meet with fellow leaders and unit commissioners

Leader Training

Adult leader Scoutmaster/Assistant Scoutmaster training, pressurized fuel training, and Merit Badge Counselor training are planned for this camporee. Preregistration is available during registration, but walk-in registration will be available by visiting HQ on Saturday morning immediately after the opening flag ceremony.

Scoutmaster/Assistant Scoutmaster training and Merit Badge Counselor training will begin immediately after opening flag ceremony.

Pressurized fuel training will begin immediately after coffee klatch. Please bring a pressurized fuel item such as a stove or lantern for training.

Red Card Training

Red Card Training will be offered on Saturday morning and afternoon. There will be two sessions that are approximately 45 minutes each with 60 scouts max per session. Pre-registration for either the morning or afternoon session is required. Troops can sign up for Red Card training at the Opening Leaders' Meeting on Friday night.

Clothing and Food Drive

Reminiscent of the collection drives by many Scouts and Scouting Units during World War II, we will be collecting canned food and socks for the **Salvation Army** during Spring Camporee. Please bring new (in package) socks and canned food to HQ (Winter Lodge). The Salvation Army will collect our donations at 4:00 PM on Saturday.

Boone Trails Items

There will be unique Boone Trails items for sale at HQ including previous Boone Trails event patches. Please stop by HQ to see what is available.



Boone Trails adult leader patches will be available at HQ for \$3 each (while supplies last). All funds generated by the patch sale will be used by the Boone Trails District Advancement Committee.

Event Guidelines

1. The Scout Oath and Law will be our guide during this event.
2. Our camporee is youth led. Please listen to and follow the youth staff directions. If you have any questions or concerns, please visit the event headquarters (HQ).
3. All adults staying overnight in connection with a Scouting activity (the Camporee) must be currently registered as an adult volunteer or an adult program participant.
 - a. Adult volunteers must register in the position(s) they are serving in. For example, an adult volunteer attending the Camporee must be registered in a unit, district, or council position. Registration as a merit badge counselor does not satisfy this requirement.
 - b. An adult program participant is an individual aged 18 or older (most often aged 18-20) who is registered as a program participant in which youth members are also eligible to participate (for example Venturing, Sea Scouting, and Exploring).
4. Webelos/AOL Dens that would like to camp with a troop must provide their own two-deep leadership and follow all overnight camporee guidelines.
5. Absolutely NO fireworks, personal firearms, weapons, alcohol or other drugs will be permitted at the camporee. Adults that need to smoke are asked to please make sure that they are out of sight of all Scouts.
6. All troops must check in their Scouts and adults when arriving and then check out before leaving.
 - a. Each unit should present a roster of those present and those who are expected to arrive during the event. The roster should include, at a minimum, name and emergency contact name, phone number, and identification of any Scouts that are to be picked up before the conclusion of the event and by whom.
 - b. All participants are required to wear their wristband for the duration of the event.
 - c. Please review the Camper Security Policies (NCAP Standard AO-804) for more information, which is available as an attachment on the registration webpage.

7. Personal Vehicles

- a. All vehicles used in camp must be operated in a safe and legal manner. All posted speed limits must be adhered to.
- b. Passengers must be seated in a seat and seatbelts used. No one may ride in a vehicle's cargo area.
- c. Please park in designated parking areas and be courteous to other troops. Vehicles should stay on camp roads unless given permission by the camp ranger, event adult advisor or event headquarters. Vehicles must stay out of pavilions and buildings. Roads must remain clear for emergency vehicles.
- d. If required for the event, vehicles staying overnight should post the parking pass visibly on the dash while the vehicle is within camp. If required, parking passes will be handed out by staff upon arrival or will be available at HQ.
- e. Anyone wishing to use a personal ATV, UTV, golf cart or similar vehicle on a GSLAC property and/or a GSLAC Scouting event must receive permission from the event adult advisor and camp ranger and have required training per GSLAC Motor Vehicle Policy.
- f. Vehicle operation should not interrupt or spoil the experience of any Scout or participant, or program presentation such as campfires, flag ceremonies, etc.
- g. Vehicles may only be operated after dark if equipped with working headlights.
- h. Follow the *Guide to Safe Scouting* including:
 - i. Youth drivers are prohibited. Must be 18 years of age or older.
 - ii. Transportation of passengers in a pickup or truck bed, recreational camper or towed trailer is prohibited. See limited exception for parade and hayrides.

8. Medical Care

- a. Every participant in a short-term event must have an up-to-date BSA Annual Health and Medical Record, with parts A and B completed. The BSA Annual Health and Medical Record for all in camp (scouts and adults) should be kept in a secure location accessible to the unit leader and the health officer.
- b. Camp staff and volunteer leaders may and should treat minor cuts, scrapes, or other minor injuries. Anything beyond their expertise should be sent to the Camp Health Officer.

- c. Please review the Short-Term Medical Care Policies (NCAP Standards HS-503 through HS-509) for more information, which is available as an attachment on the registration webpage.
9. Please review the Emergency Procedures (NCAP Standard AO-805), which is available as an attachment on the registration webpage.
10. The current camp requirements for safe fire building will be reviewed at the opening meeting. Troops are responsible for ensuring that any troop fires are built safely, managed and put out cold when finished.
11. The scout uniform should be worn during the camporee. We ask that you wear your field uniform during flag ceremonies. Your activity uniform may be worn at all other times. If you are a former staffer and just attending, please refrain from wearing your staff shirt or hoodie.
12. Troops must maintain the BSA guidelines for two-deep leadership and follow all other Youth Protection Training (YPT) guidelines.
13. The Buddy System is required at this event and Scouts should remain within the event boundaries.
14. Campsite size will be assigned based upon the number of participants included in your registration. Early registration is greatly appreciated and will help staff better plan the campsite assignments and activities.
15. To attend any shooting sports activity (if available), participants will be required to attend the safety brief and bring a completed Shooting Sports Permission Form.
16. Garbage and trash
 - a. Participants are expected to practice Leave No Trace guidelines and properly dispose of all trash.
 - b. Garbage and trash should be removed from the campsite daily.
17. All leaders and participants should read and follow the Greater St. Louis Area Council (GSLAC) BSA guidelines for COVID-19.
18. There will be NO fighting (verbally or physically) at this event. Any issues should be reported to staff at HQ.

Camp Etiquette

Based upon feedback from previous events, a few common camping etiquette practices help improve the enjoyment for all participants. Experienced campers are asked to share and promote these practices within their troop.

1. It is generally preferable and safer to walk around another troop's campsite rather than walk through the campsite. If you must walk through a campsite, it is courteous to first ask for permission.
2. Please observe quiet hours between lights-out and reveille. Between those hours, please keep noise from conversations, music, cooking equipment, latrine doors and vehicles to a minimum so that all can get a good night's sleep.
3. Please observe surrounding campsites and the wind before building a fire. Fires built too close to another campsite risk the possibility of burning holes in tents from wind carried embers.
4. Follow Leave No Trace guidelines and keep the camp clean of trash.
5. Troops that arrive early should be courteous when setting camp and leave room for later arriving neighbors by not spreading out beyond their designated area.

Activities

Session 1 (8:15 am - 11:45 am)

- 1940s Scouting Memorabilia Displays
- Semaphore Flag Demo
- Discontinued Merit Badges
- Shooting Sports
 - Rifle
 - Knife and Hawk
 - Archery
 - BB-Guns
 - Wrist Rockets
- Games
 - Cornhole & Washers
 - Kick Ball / Capture the Flag
 - Slinky's/Jacks/Marbles
 - Leatherworking/Duct tape Wallets
 - Gaga Ball
 - Kubb
 - Frisbee Toss
 - Bocce Ball
 - Minuteman Bar
- Climbing
 - Bouldering Wall
 - Climbing Tower
 - Crate Stacking
- Canoeing
- Fishing
- Competitions
 - Top Shot
 - Code Breaking Challenge
 - Paper Airplane
 - Fishing Derby
 - Frisbee Contest
 - 1940s Personal Fitness Challenge
- Training
 - Red Card Training
 - SM/ASM Training
 - Pressurized Fuel
 - Merit Badge Counselor

SESSION 3 (Saturday Evening Program)

- Campfire

LUNCH SESSION (12:00 pm - 1:00 pm)

- B-25 Flyover and Speaker
- World War II Displays & Vehicles

SESSION 2 (1:00 pm - 4:00 pm)

- 1940s Scouting Memorabilia Displays
- Semaphore Flag Demo
- Discontinued Merit Badges
- Shooting Sports
 - Rifle
 - Knife and Hawk
 - Archery
 - BB-Guns
 - Wrist Rockets
 - Shotgun (ticket required)
- Games
 - Cornhole & Washers
 - Kick Ball / Capture the Flag
 - Slinky's/Jacks/Marbles
 - Leatherworking/Duct tape Wallets
 - Gaga Ball
 - Kubb
 - Frisbee Toss
 - Bocce Ball
 - Minuteman Bar
- Climbing
 - Bouldering Wall
 - Climbing Tower
 - Crate Stacking
- Canoeing
- Fishing
- Competitions
 - Top Shot
 - Code Breaking Challenge
 - Patrol Flag
 - Paper Airplane
 - Frisbee Contest
 - Canoe Race
 - 1940s Personal Fitness Challenge
 - Dutch Oven Cookoff
 - Fishing Derby
 - Chess

Competitions

- Top Shot: There will be separate Archery Top Shot and Rifle Top Shot competitions based upon the Highest Score in the respective competition. Each Scout gets one (1) “round” and must state BEFORE THEY SHOOT that the round is for top shot (one try only per Scout). Scoring will be based on the individual events normal score system. Scouts only.
- Dutch Oven SPAM Cookoff: All entries must be cooked in a Dutch oven and must contain at least one can of SPAM. The entry must be planned, prepared, and cooked by either Scouts or Adults and will be judged separately. Staff will judge entries on Taste, Quality, and Creativity that best showcases SPAM as an ingredient. The entry must be brought to HQ by 3:00 pm on Saturday.
- Chess: Win the bracket competition. Games will be 15 minutes long. After time has expired, the remaining pieces will be scored to determine the winner (Pawn=1, Knight=3, Bishop=3, Rook=5, and Queen=9 points). Open chess play in the morning and competitions in the afternoon.
- Code Breaking Challenge: The challenge is to decode the text within 2 minutes
- Patrol Flag: Scouts will make at camp a patrol flag and will be judged based upon design, Scout spirit and presentation. A table of supplies for the flags will be available (one set of supplies provided per Patrol). Entries must be submitted to the judges on Pioneer Field by 3:00 pm on Saturday.
- Fishing Derby: The fishing derby is based on the longest fish caught. Whoever catches the longest fish will win this competition.
- Paper Airplane Contest: the Scout that builds the airplane that flies the furthest during the contest wins.
- Frisbee Contest: the Scout with the longest throw during the contest wins
- Canoe Race: the team with the fastest time over the course during the contest wins
- 1940s Personal Fitness Challenge: the Scout with the fastest time to complete the route wins

Activities

- Shotgun: Scouts have the opportunity to purchase shotgun shooting tickets during pre-registration and (if there are any remaining) at HQ on Friday night. The ticket price is \$5 for a five-round set (i.e., 5 shots plus 5 clays). There will be a maximum of 23 sets available for purchase. Tickets that have not been used before 3:00 PM will be forfeit and remaining rounds will be on a first-come basis.

Scouts BSA Merit Badges

Merit badge spots can be reserved online along with camporee registration. Remaining spots (if any) will be announced during the opening leader's meeting on Friday night. Scouts are asked to bring a blue merit badge card to the merit badge and complete any prerequisites as noted below.



American Heritage

Prerequisites: 2, 3c, 5



Radio

Prerequisites: TBA



Chess

Prerequisites: None



Gardening

Prerequisites: TBA



Engineering

Prerequisites: 1, 2, 5



Nuclear Science

Prerequisites: 2b, 5, 6b

Opportunities to visit a local nuclear power plant or nuclear reactor have been arranged by the Nuclear Science Merit Badge Counselors. Either visit would meet requirement 6(b). The tours will be held on separate dates either before or after the Camporee. Transportation to and from these facilities are the responsibility of the scout and the scout will need to sign up before hand for the visit through Mr. Westley by email to kevin@westley.us.

These visits are open to any scout even if they are not taking the merit badge; however, priority will be given to scouts signed up for the merit badge.

Parents/adult leaders providing transportation are welcome to stay and attend if space is available.

The two opportunities are:

1. **Missouri S&T's pool-type nuclear reactor**

<https://reactor.mst.edu/> Tour is Saturday, 13 April 3pm to 5pm in Rolla, MO before the Camporee.

This 200-kilowatt reactor is used for research and does not generate electricity. Instead, the output is used to generate nuclear effects for research and education purposes.

2. **Callaway Nuclear Generating Station**

<https://www.ameren.com/missouri/company/environment-and-sustainability/nuclear> Tour is Saturday, 11 May 10AM to 1PM at the station near Portland, MO after the Camporee.

This 1.2 Gigawatt (3.57 Gigawatt Thermal) pressurized water reactor is operated by Ameren to provide electric power to its customers. This station produces 9.7% of Missouri's electricity.

Webelos/AOL STEM Nova



Webelos will have the opportunity to participate in a STEM Nova during this event.

Cub Scout Nova: Swing

This module is designed to help you explore how engineering and simple machines called levers affect your life each day.

Prerequisites:

- Requirement 1:
 - Watch an episode or episodes (about one hour total) of a show about anything related to motion or machines.
 - Come prepared to talk about what you watched - what did you find surprising or interesting
- Requirement 4:
 - Visit a place that uses levers, such as a playground, carpentry shop, construction site, restaurant kitchen, or any other location that uses levers.
 - Come prepared to discuss the equipment or tools that use levers in the place you visited

Webelos/AOL Adventure

Webelos Adventure: Engineer

Prerequisites: Requirement 2.

- Learn to follow engineering design principles by doing the following:
 - a. Examine a set of blueprints or specifications. Using these as a model, prepare your own set of blueprints or specifications to design a project.
 - b. Using the blueprints or specifications from your own design, complete your project. Your project may be something useful or something fun.
 - c. Share your project with others at Spring Camporee.

Schedule

FRIDAY

5:30 pm Check-in opens at HQ
9:00 pm Check-in closes
Opening Leaders' Meeting starts
Movie night starts (bring a chair)
11:00 pm Lights out

SATURDAY

6:00 am Reveille
7:30 am Flag ceremony at HQ and morning announcements
8:15 am Activities open and Merit Badges start
Webelos Nova Morning Session Starts
Scoutmaster/ASM training starts (Adults/Leaders)
Merit Badge Counselor training starts (Adults/Leaders)
9:00 am Coffee Klatch by OFP (Adults/Leaders)
Pressurized fuel training (Adults/Leaders)
11:45 am Activities close
12:00 pm Lunch by OFP
Special activities during lunch
1:00 pm Activities open
Chess Tournament Starts
3:00 pm Bring Dutch Oven creation to HQ to be judged
Patrol Flag Competition Submissions judged
4:00 pm Activities close
4:30 pm All Campfire sheets are to be turned in to HQ
5:00 pm Dinner at campsites
6:15 pm Flag ceremony at HQ
7:00 pm Religious Services start
8:00 pm Religious Services end
8:15 pm Campfire starts
10:00 pm Campfire ends
11:00 pm Lights Out

SUNDAY

6:00 am Reveille
7:30 am Closing Flag Ceremony at HQ
8:00 am Check-out begins at HQ
11:00 am Camp Closed

Activity Locations

FRIDAY

Check-in	HQ at Winter Lodge
Movie Night	Winter Lodge
Opening Leaders' Meeting	Swaim Lodge

SATURDAY

Opening Flag Ceremony	Winter Lodge
Coffee Klatch	Winter Lodge
Lunch by OFP	Pioneer Field
SM/ASM & Pressurized Fuel	Winter Lodge
Red Card Training	Swaim Lodge
Merit Badge Counselor	Swaim Lodge

Nuclear Science MB	Swaim Lodge
American Heritage MB	Amphitheater
Radio Merit Badge	Eco Lodge
Chess Merit Badge	Pioneer Pavilion
Gardening Merit Badge	Pioneer Field
Engineering Merit Badge	Chapel

Webelos Adventures	Rotary Campsite
Webelos Nova	Optimist Campsite

Competitions:

• Top Shot	Ranges
• Code Breaking	Pioneer Field
• Patrol Flag	Pioneer Field
• Paper Airplane	Pioneer Field
• Frisbee Contest	Pioneer Field
• Canoe Race	Waterfront
• Fishing Derby	Waterfront
• 1940s Personal Fitness	Pioneer Field
• Dutch Oven Cookoff	Winter Lodge

Religious Services:

• Catholic	Swaim Lodge
• Protestant	Chapel
• Scouts Own Service	Eco Lodge

Campfire	Amphitheater
----------	--------------

SUNDAY

Closing Flag Ceremony	HQ at Winter Lodge
Check-Out	HQ at Winter Lodge

1940s Scouting:

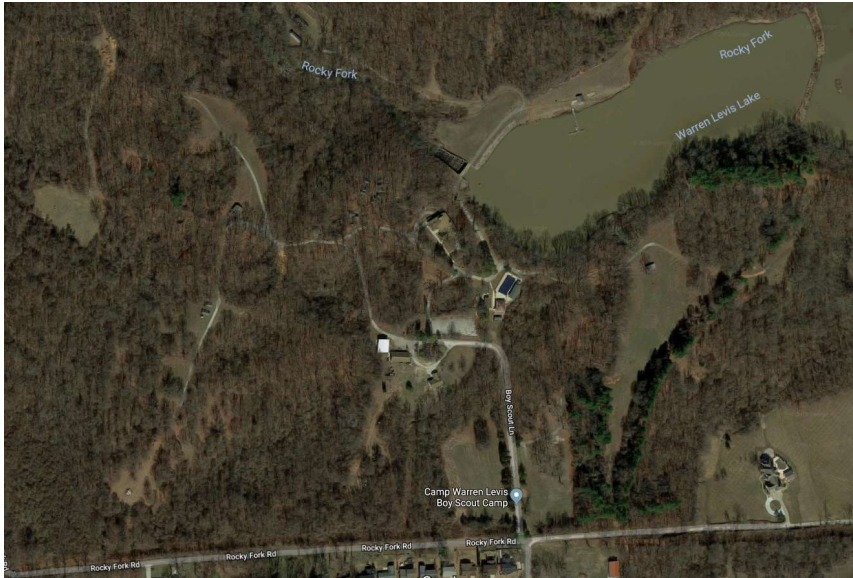
• B-25 Flyover and Speaker	Pioneer Field
• World War II Displays	Pioneer Field
• 1940s Scouting Memorabilia	Near Swaim
• Semaphore Flag Demo	Pioneer Field
• Discontinued Merit Badges	Pioneer Field

Activities:

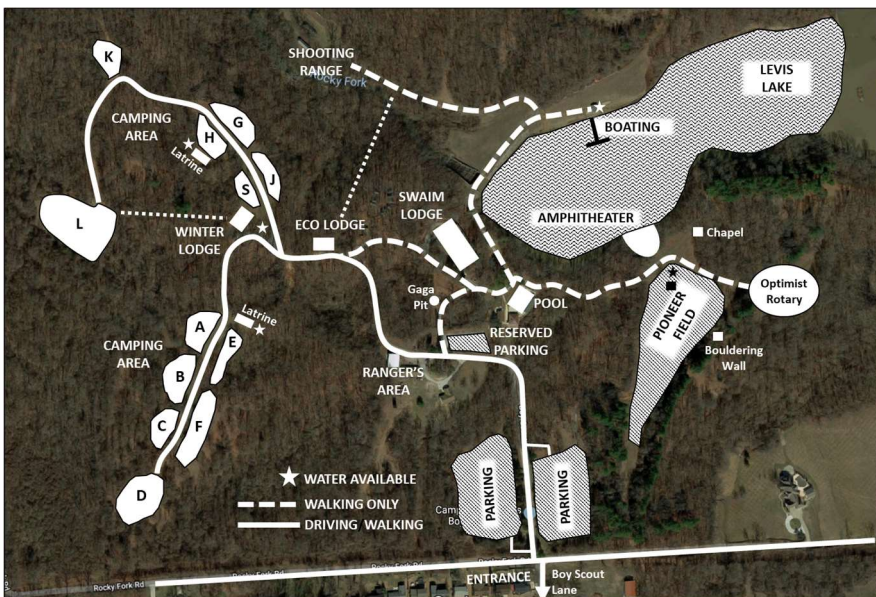
• Knife and Hawk	Archery/BB Range
• Archery	Archery Range
• BB-Guns	BB-Gun Range
• Wrist Rockets	Archery/BB Range
• Rifle	Rifle Range
• Shotgun	Shotgun Range
• Gaga Ball	Gaga Pit
• Canoeing / Fishing	Waterfront
• Climbing Tower	Climbing Tower
• Bouldering Wall	Pioneer Field
• Crate Stacking	Bouldering Wall
• Cornhole/Washer	Pioneer Field
• Kick Ball	Pioneer Field
• Capture the Flag	Pioneer Field
• Slinky's/Jacks/Marbles	Pioneer Field
• Leatherworking	Pioneer Field
• Duct tape Wallet	Pioneer Field
• Kubb	Pioneer Field
• Frisbee Toss	Pioneer Field
• Minuteman Bar	Pioneer Field
• Bocce Ball	Pioneer Field
• Chess	Pioneer Pavilion

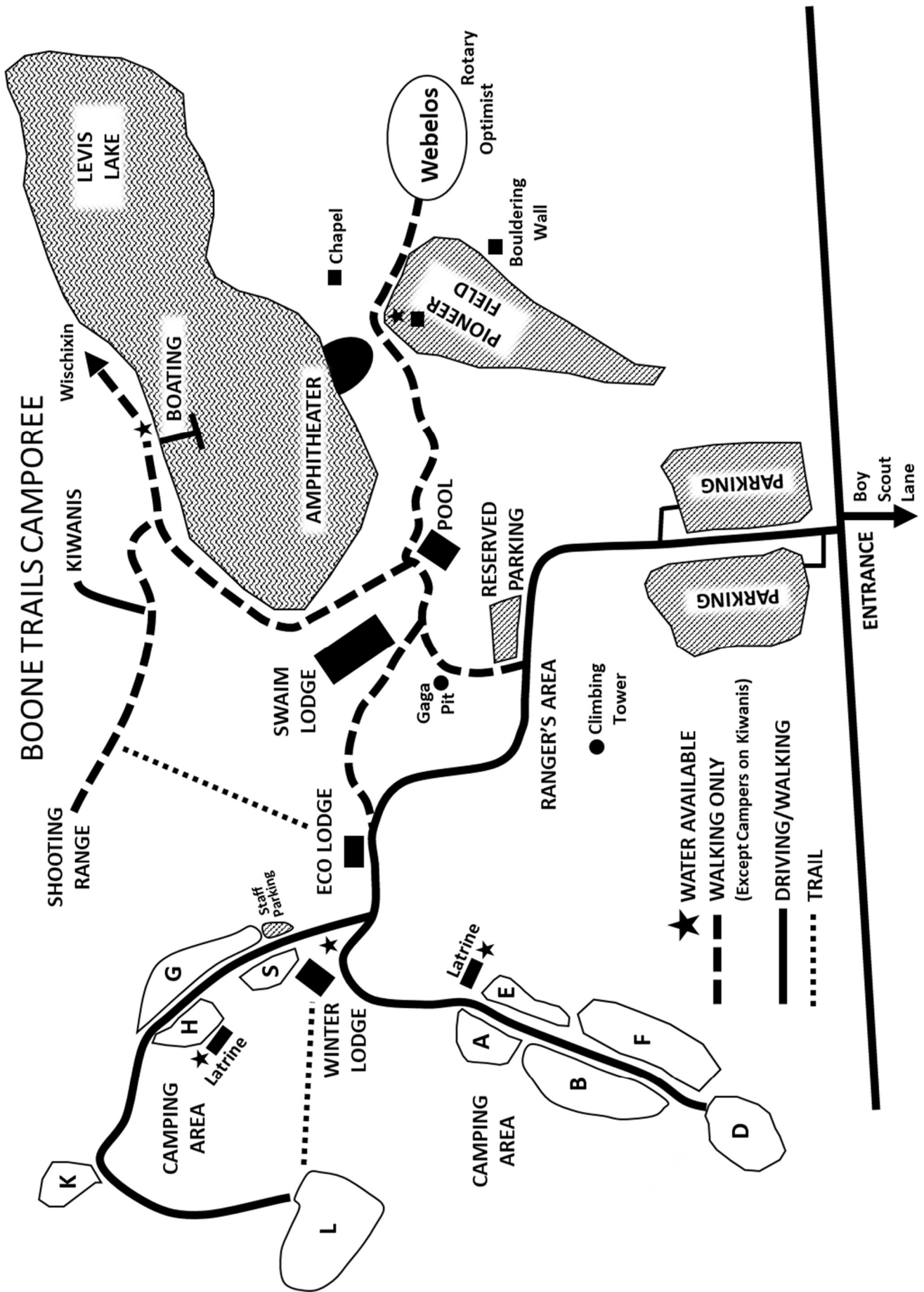
Event Map

Camp Warren Levis is about 40 miles from St. Charles in Godfrey, Illinois. Entrance to the camp is on Boy Scout Lane. From Route 3 (W. Delmar Ave), Boy Scout Lane will go through a residential area for about half a mile and then enter the camp.

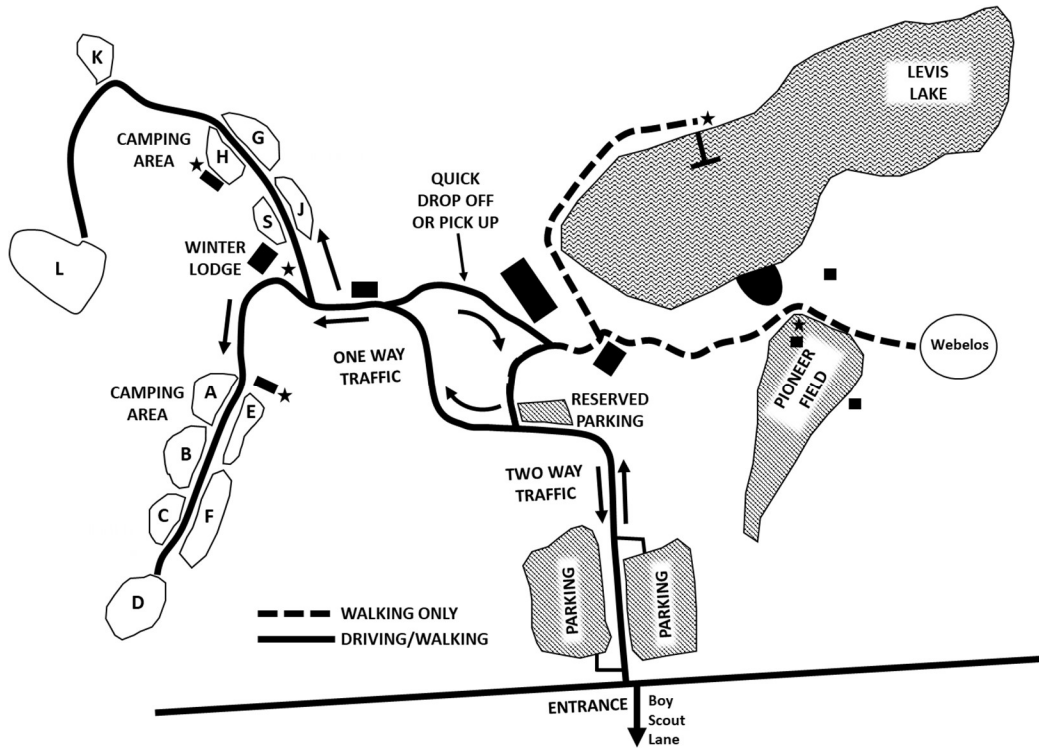


We have access to the entire camp for our camporee. Camping will generally be on the West side and activities will mostly be around Pioneer Field and the lake. Events and the schedule have been planned to get the most out of the camp facilities while limiting required travel between sides as much as possible. Nevertheless, participants are advised to prepare for some additional walking at this camporee similar to a summer camp.





Parking and Friday Night Traffic Plan



The main parking lots are located in the front of the camp. Campers are encouraged to park in this area. All cars parked past this main parking area should plan to remain in place during the camporee. Troops should plan to limit campsite parking as much as possible to conserve space for camping. Any cars parked in the camping area should be completely within the troop campsite.

Since the main parking lots are a distance from the campsites, all campers are encouraged to combine camping gear into their troop trailer and/or a support vehicle. A limited "Quick Drop Off or Pick Up" area is indicated on the map above for vehicles that are not staying the weekend but have a significant amount of equipment that needs to be dropped off closer to the campsites.

Most of the roads in camp are sized for one-way traffic as shown in the map above and can be rough in areas.

Provisions are being made for Troops to drop off their troop trailer early. Troops planning to drop off their trailer before 5:30 pm Friday should check the Boone Trails camporee page or contact venegoni1910@gmail.com for their campsite assignment.

SHOOTING SPORTS PERMISSION FORM

Boone Trails District (Unit, District or Council) will be conducting an open shooting experience. In this program, Scouts will be able to participate in archery, rifle, shotgun, and/or pistol (Venture or Sea Scouts only) programs under the direction of an NRA Range Safety Officer, NRA certified instructors, or USA Archery Level 1 Instructor.

Scouts will be required to wear appropriate protection equipment at all times while on the range. Scouts are expected to abide by all safety rules and the instructions of the Range Safety Officer(s) and rifle, pistol, shotgun, archery instructor(s).

I, the undersigned, give my child, _____, permission to participate in this program. I understand that participation in the activity involves a certain degree of risk. I have carefully considered the risk involved and have given consent for my child to participate in the activity. I understand that participation in the activity is entirely voluntary and requires participants to abide by the rules and standards of conduct. I release the Boy Scouts of America, the local council, the activity coordinators, and all employees, volunteers, related parties, or other organizations associated with the activity from any and all claims or liability arising out of this participation. For safety, my child and I agree that they will do the following or they will be removed from the program. I understand that any additional cost associated with participation in this program will not be refunded if my child is removed for not following the rules below.

1. Complete a range safety briefing.
2. Wear all safety gear at all times while on the range.
3. Follow all the safety rules provided in the briefing.
4. Follow the instructions of the Range Safety Officer(s) and rifle, pistol, shotgun, and archery instructor(s).
5. Do not handle the firearms until instructed to do so by the instructor(s).
6. Is a registered Venturer or Sea Scout (for pistol programs).

Participant signature _____ Date: _____

Parent/guardian signature _____ Date: _____

Parent/guardian printed name _____

Home phone _____ Cell _____