

# OSARK HOWLERS DISTRICT DAY CAMP DINOTOPIA ADVENTURE



**3 Fun-Filled days with Archery, BB Guns, Adventures and more!**  
**Registration includes a T-shirt and patch.**

June 4<sup>th</sup>, 5<sup>th</sup> and 6<sup>th</sup> at  
Joplin Springfield Railway (Map on Last Page)  
1040 N. Airport Blvd.  
Springfield, MO 65802

## **Fees & Registration**

\$30/ Scout if paid by May 19<sup>th</sup> (\$40 after)

\$10/ Per Adult

*There is no fee for Volunteer Staff!*

***Lunch is not provided***

***Bring your Health Forms A and B***

# EVENT SCHEDULE

## 2026 Ozark Howlers Cub Scout Day Camp - Outdoor Adventure

Thursday 5:30 to 6:30 6:30 to 7:00 7:00 to 8:00	Rotation	Tigers	Wolves	Bears	Webelos	Arrows
	Check-in					
	Opening Ceremony					
	Adventure	Bobcat	Bobcat	Bobcat	Bobcat	Bobcat

Friday 5:30 to 6:30 6:30 to 7:00 7:00 to 8:00	Rotation	Tigers	Wolves	Bears	Webelos	Arrows
	Check-in					
	Opening Ceremony					
	Adventure	Adventure	Adventure	Adventure	Adventure	Adventure

Saturday 8:00 to 8:45 8:45 to 9:00	Rotation	Tigers	Wolves	Bears	Webelos	Arrows
	Check-in					
Opening Ceremony						
9:00 to 9:55	Block 1	Wrist Rocket	Adventure	Global Block	Adventure	Archery
10:00 to 10:55	Block 2	Archery	BB Guns	Adventure	Global Block	Adventure
11:00 to 11:55	Block 3	Adventure	Archery	BB Guns	Adventure	Global Block
12:00 to 1:00	Lunch	Lunch	Lunch	Lunch	Lunch	Lunch
1:05 to 2:00	Block 4	Global Block	Adventure	Archery	BB Guns	Adventure
2:05 to 3:00	Block 5	Adventure	Global Block	Adventure	Archery	BB Guns

## **Who may attend?**

For Tigers, Wolves, Bears, and Webelos, and AOLs – Scouts do not stay overnight.

BSA guidelines state that each Tiger Cub must have their own adult partner with them at camp. All other Cub Scouts require an adult leader to be responsible for them at camp.

Adult leadership is critical to having a great camp experience. The Pack must provide leadership and adult supervision for their Cub Scouts who attend Day Camp, plus provide transportation to and from the camp. Just like all Scouting activities, two deep leadership, must be followed and [Youth Protection Training](#) completed for all adults. This requires **two** registered adult leaders 21 years of age or over. Everyone must complete parts A and B of the [Annual Health and Medical Record](#).

All Scouts must have a completed Health and Medical Form, parts A and B, prior to day camp. The medic must be shown these at check-in. Leadership for the pack must retain these and have them available for reference should an incident occur.

## **Refund Policy**

Refunds are awarded on a case-by-case basis. You may request a refund by contacting the council office at 417-883-1636.

## **The Buddy System**

We use the Buddy System at Day Camp. No Scout is allowed to go anywhere without another Scout (buddy.) Please remember that *buddies must be of the same gender* unless the buddy is a parent/guardian. Please review the buddy system with your Scouts and all Walking Leaders before coming to Day Camp. This will help keep your groups together and our camp safe.

## **What to Bring to Day Camp:**

- ☒ Water bottle/cup (there will be water stations for refills)
- ☒ Day Camp T-shirt. This is your Scout's uniform for Day Camp.
- ☒ Sturdy, closed toe shoes. Please note that these may get wet. (No open-toed shoes, crocs or sandals!)
- ☒ Sunscreen/ Sun protection (hats are recommended)
- ☒ Bug Spray/ Insect Repellent
- ☒ Rain gear if the forecast predicts rain
- ☒ Backpack/day bag
- ☒ Pencil or pen
- ☒ Healthy snacks and a LUNCH for your Scout/Pack on Saturday
- ☒ A positive attitude
- ☒ Scout spirit
- ☒ Pop up canopy for Saturday, pack flag
- ☒ Hand sanitizer/ disinfectant wipes (as needed)
- ☒ Camp Chair (For adults at program areas)

## **Please Leave at Home:**

- ☒ Pets
- ☒ Pocket Knives
- ☒ Electronics
- ☒ Matches, lighters, fireworks
- ☒ Alcohol and Tobacco

## **Arriving at Camp:**

- ☒ Check-in begins at 5:30 p.m. on Thursday, June 4, 2026, at the old Joplin-Springfield Railway
- ☒ When you locate the check-in area, **please designate ONE adult to check in your pack.** Have your additional Adults and your Scouts proceed to the gathering area.
- ☒ Verify your Pack's Leadership and youth attending Camp.
- ☒ If you bring in additional Scouts, turn in all properly completed forms and payment at the Check-In Table.
- ☒ All Participants are asked to wear provided T-shirt and wrist band for identification and safety purposes.
- ☒ Please arrange to arrive on time. A gathering activity will be available for the Scouts while their Leaders are completing Check-in. Opening Ceremonies will begin promptly at 6:30 on Thursday evening and 8:45 on Saturday morning.

**Medical Awareness:** Please turn in a medical awareness form per pack along with pack roster upon check-in. This will inform Camp Staff of any conditions that we need to be aware of. Reportable conditions include, but are not limited to: **Severe allergies to bees, nuts, foods, asthma, autism, etc.**

## **Medicine/ First Aid**

Medical personnel will be at camp from start to finish, if you have any serious medical concerns, please relay that to the medical staff upon arrival. The medic will be available to treat any minor injuries or heat-related illness. Local EMS and Health Authorities are notified of the camp and will be available for any emergency.

## **Emergency procedures**

In the event camp must be evacuated, a clear signal will be made. This is outlined during the camp safety brief at the start of each program day. This is a rain or shine event, but in the event of severe weather, cancellation may be considered and will be communicated.

## **Vehicles in Camp**

No vehicles are permitted in camp. Upon arrival, a staff member will direct the driver to the parking area. If special permission is needed, please reach out to the Camp Director. Our goal is to keep all roadways and access to the program clear for emergency vehicles if necessary.

### **Scout late arrival or early departure**

Only persons listed on the registration forms may pick up scouts from camp. Those persons not on the registration form list will not be allowed to retrieve the scout early and will be asked to leave. If your unit has members planning to arrive late or leave early, please communicate that to staff prior to camp.

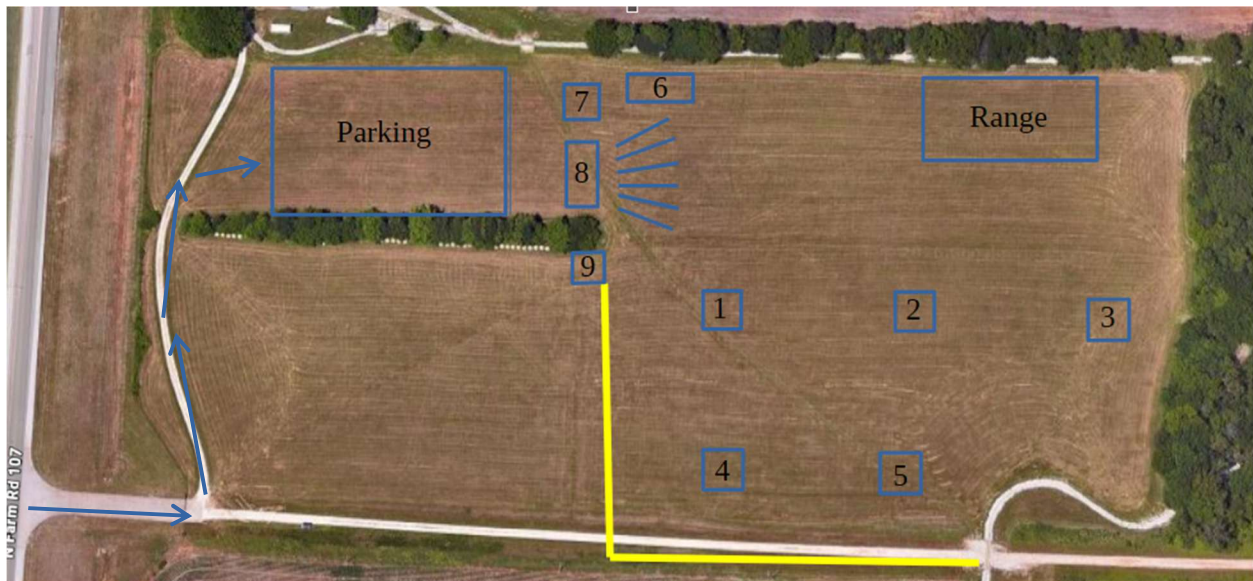
### **Program**

The programs on Thursday, Friday and Saturday will be by den level with age-appropriate activities, games, and crafts. On Saturday, Scouts will get a chance to shoot BB Guns, Bows & Arrows, Sling Shots, crafts, and play games. **Lunch is not provided for participants on Saturday.**

## 2026 OZARK HOWLERS CUB SCOUT DAY CAMP

### Location:

Joplin Springfield Railway (37.22217, -93.40253)  
1040 N. Airport Blvd.  
Springfield, MO 65802



1. Tigers
2. Wolves
3. Bears
4. Webelos
5. AOLs
6. Global Block
7. Check-in / Medical Tent
8. Gathering Area / Stage

