

Hood Scout Reservation Usage Guide FOR CUB SCOUT FAMILY CAMPS



UPDATED FEBRUARY 21, 2022



Welcome to Hood Scout Reservation

Thank you for joining us for one of our Cub Scout Family Camps (Akela Cub Weekend, Cub Scout Polar Bear, or Cuboree). Our Cub Scout Outdoor Program Committee has planned a weekend of fun and adventure for your Cub Scout.

As you know it takes a lot of volunteers to make these events happen. If you would like to volunteer or have questions for the Cub Scout Outdoor Program Committee, you can contact:

Tyler Scott, Camp Director	Traci Osburn, Program Director
tyler@bsa-jackson.org	traci@bsa-jackson.org
601.540.2439	601- 260 - 6429

TABLE OF CONTENTS	
CAMP POLICIES	3
VEHICLES IN CAMP	4
CHECK-IN CHECKOUT	4-5
EMERGNECY PROCEDURES	5-6
HEALTH LODGE	6
FISHING	7
CAMPING	8-9
CUB SCOUT FAMILY CAMP PROGRAM	10-11
MAP OF HOOD SCOUT RESERVATION	12



CUB SCOUT FAMILY CAMP POLICIES

In the follow pages are the guidelines, policies, and procedures for all Cub Scout Family Camps (Akela Cub Weekend, Cuboree, and Polar Bear Weekend).

CAMP POLICIES

Scouts, Scouters, and parents will be expected to exemplify the Scout Oath and Law while in camp.

Tobacco: Our Scout Oath reminds us to keep ourselves physically strong and our Scout Law reminds us to be clean. The use of tobacco products adversely affects our bodies and may cause cancer. The use of smoke, chewing tobacco, vaping, and electronic cigarettes are not permitted at Hood Scout Reservation.

Alcohol & Drugs: Possession or use of any alcoholic beverages, illegal drugs, or the misuse of any prescribed drug is expressly prohibited. Groups or individuals found in violation of this will be asked to leave camp immediately.

Firearms and Fireworks: No Firearms or fireworks should be at Hood Scout Reservation. If you have registered firearms, we asked that you leave them locked in your vehicle or check them in at the Shooting Sports Area.

Fuels: Propane and liquid fuels are allowed at camp, but must be used under adult supervision. Please depose of “empty” propane containers properly.

Campfires: Campfires are only allowed in designated fire rings. All fires must be monitored by adults at all times, and must be fully extinguished prior to departure.

Per the Hood Scout Reservation Forestry Plan, **No outside wood** is allowed to be brought onto camp property.

Portable raised fire pits may be allowed for large group events. Use proper fire safety around all fires and open flames. Do not move fire rings.

Pets: No pets are allowed at HSR. Service animals are permitted. They must have the proper documentation and wear service animal gear. We ask that you let us know that you will have your service animal on camp.

Generators: No generators are allowed on camp. If you have need electricity for a medical device ask your Cub Scout Leader contact the HSR Cub Scout Program Committee or HSR Ranger to select a site with electricity.



VEHICLES IN CAMP

Speed limit through camp is 5 miles per hour. This includes the main camp road. All vehicles must be parked in the parking lot. Vehicles must be parked in designated parking lots so as to ensure ready access to the camp facilities by emergency, law enforcement, and camp vehicles. Please park and lock vehicles and pocket your keys.

ALL VEHICLES MUST PARKED IN THE PARKING LOT.
No vehicles will be allow past the service road gate.

Individuals will have to transport their gear to the individual campsite. We encourage you to bring a wagon or small cart to transport your gear to and from the campsite. HSR does provide wheelbarrows to help move your gear. We ask that you bring the wheelbarrow back to the parking lot before returning to set up your campsite.

Pack(s) are encouraged to bring their own trailers and help transport their packs' gear to the campsite.

CHECK IN

We have two check in time frames.

1. **Friday from 4:00 PM to 7:00 PM.** at the Shooting Sports Classroom.
2. **Saturday from 7:00 AM to 9:00 AM** at the Shooting Sports Classroom.

Please have your e-ticket ready to scan. You and your family will receive color armband for the event. We ask that you wear the armband the whole weekend.

On Saturday, after the program begins at 8:30 AM, the road from the Shooting Sports area to Parking Lot will be closed to all traffic unless its a HSR vehicle. Families that arrive during this time will be asked to park at the Shooting Sports area. Once the program stops at noon, the road will open back vehicle traffic. It will close again once program start again.



CHECK OUT

If you have to leave during the day. Please inform one the Hood Scout Reservation camp staff members. They will be able to get the gates unlock to that you can leave.

Campsites: should be clean – no trash or debris around the site. Latrine/Central Showers Facility should be cleaned. Stack any firewood left by the fire ring. Any other sticks or wood is to be removed to the edge of the campsite in the woods. Please report any maintenance items to the Ranger I Campmaster.

Trash Removal: All trash is to be removed from the campsite. Units are responsible for transporting their own trash off camp property.

EMERGENCY PROCEDURES

Although it is never planned, emergencies happen. The Camp Staff has taken steps to mitigate any injury or other issues at camp. However our staff cannot be everywhere on camp all the time. If in the event of an emergency, please follow the direction of the staff. If you hear continuous ringing of the bell, please move to the parade field at fast as possible.

It is recommend that all units have on file with their units a current and properly completed Annual Health and Medical Record. Units should have at least both A & B completed. All **injuries**, no matter how small, must be reported immediately to the Health Officer.

Child Abuse, Youth Protection, and Membership Violations

In the event of any suspected or observed abuse or violation to the Youth Protection Guidelines or the Guide to Safe Scouting, it is the responsibility, by law, to report it to the Camp Director or a designated individual.

Lost Campers – to prevent Lost Campers, it is important that all scouts use the **buddy system** at all times. If a camper is lost, please follow these steps: Notify a HSR Camp Staff Member. Give a detail description of the missing Scouts. This would include but limited to Height, Weight, Skin Color, Clothing.

EMERGENCY PROCEDURES



Severe Weather is one of the highest threats at scout camp. We encourage both parents and volunteers to take care of their kids. Several steps are taken to prevent any injury or damage. This includes observing weather forecast before camp begins and while camp is happening. Multiple weather radios are located around camp. In addition the Camp Ranger has direct communication from the Copiah County Emergency Management Center and the National Weather Service. If weather is forecasted to be hazardous prior to camp, the Camp Director will make the decision to postpone the event.

If while at camp, severe weather approaches, the Camp Ranger will be in direct contact with the Copiah County Emergency Management Center. It is important to follow all direction given by camp staff to ensure safety.

Fire – notify the Ranger or camp staff member immediately and safeguard all personnel. If a fire can not be controlled by the staff, the camp will be evacuated. It is recommended that all people who drive to camp keep their car keys with them at all times.

HEALTH LODGE

In an effort to provide a safe environment for all who come to Hood Scout Reservation, all participants (including scouts, siblings, parents, guardians, guests, leaders, and staff are encouraged to have a BSA Annual Health and Medical Form - Parts A and B completed before coming to camp. It is recommended that the unit leader at camp maintain the health forms in an easily accessible location.

The Health Lodge is staffed 24 hours a day by a highly qualified healthcare professional. Medication storage is located there too if needed.

Injuries – all injuries, no matter how small, must be reported immediately to the Health Lodge . An accident report must be filed.

In case of serious medical emergencies, transportation will be available. Copiah County Medical Center is the closest hospital.



FISHING

Fishing is encouraged. Participants will need to bring their own fishing equipment.

Bass

- a. Under 14” – remove from lake
- b. Over 14” – return to lake

Bream – 5 bream per person may be kept if planning to eat them. Return all others to lake.

Crappie – Remove all crappie caught from lake.

Catfish – Remove all catfish caught from lake.

Do not fish behind the Arena or in the Aquatics (swimming/boating) areas.

Do not clean any fish at Central Showers or latrine sinks. Give a catch report (species/numbers removed) to the Ranger or camp staff member upon checkout.



CAMPING

GENERAL INFORMATION

Whether you are new to Scouting or a seasoned professional, it is important to make sure you have everything you need for camp. It is highly recommended that Packs work with families (especially those new to Scouting) to help them prepare to camp. Many units have a practice campout before the Cub Scout Family Camps to work out kinks, make sure you know how to set up your equipment, etc.

WEATHER

Weather plays a significant role in comfort at camp and what clothing and equipment you bring. Here are some general rules of thumb to follow:

Always plan for rain, even if it is not in the forecast.

When determining temperature, remember to subtract 5 - 10 degrees from the forecasted temperature in Hazlehurst.

Plan for dust and/or mud.

Always remember to factor in wind chill and heat index

Consult your scout handbook, or talk with your cubmaster.

For more information about Hazardous Weather, you can complete the Hazardous Weather Training found in the training section of www.my.scouting.org.



CAMPING

CAMPSITES

There are a varied size of campsites at Hood Scout Reservation. When the unit leader (cubmaster) completes a unit registration, the unit will be able to choose three possible campsites for their unit. This is subject to change, based on the number of participants for each unit and the overall number of participants at the campout. Some units will have to share campsites.

Hood Scout Reservation offers established campsites numbering 1 - 9. These campsites include the following:

- Outdoor Latrine (Restroom) and Outdoor Shower

- Water Access

- Pavilion (with a fan, lights, and electrical outlets, except campsites 4 and 10)

- Platforms with Tent Frames*

- Fire Ring

A number of non-established campsites are also used. This includes: Cubworld, Ecology Conservation, Gillwell Field, field in front of campsite 1, area behind the Administration Building, Handicraft Shelter, and the old archery range. These temporary campsites are used when a unit requires a large amount of space or the available space is full. These campsites are considered primitive. When using these campsites, units are required to observe leave no trace principles.

*The Platforms and Tent Frames are designed for the canvas tents that are used during Summer Camp. Families are welcome to use the platforms to set up tents.

No part of the metal frame can be used to tie a guide line to the pole. Example would be hamcocks. Any damage to the tent frame will be charged to the units using the campsite.



CUB SCOUT FAMILY CAMP PROGRAM

Unit Leaders Meeting

Unit leaders and staff will have a brief meeting on Friday Night at 9:00 PM in the Dining Hall. This meeting will provide information for the weekend including any schedule changes, locations of activities, a brief review of rules and guidelines at Hood Scout Reservation, and to answer any question. It is recommended that at least one member from each unit attend.

Scouts Own Service

A Scout is Reverent. This will be a 30-45 minute session. Scouts will assist in preparing a worship service, then lead in the worship service immediately following the preparation. If you have a scout who is interested in participating the scout can prepare by writing a short prayer, expressing something about their faith, or even offering a song for the group to sing.

This will complete the following Duty to God Requirements:

- Tiger- Requirements 1 and 2
- Wolf- Requirements 1, 2, and possibly 5
- Bear - Requirements 1 and 2b
- Webelos - Requirements 1 and 3 (possibly 2d and h of Maestro!)
- Arrow of Light - Requirements 1 and 2

All scouts will complete requirement 3 of the Outdoor Activity Award by participating in an outdoor interfaith or other worship service.

Closing Campfire Program

Our Closing Campfire Program will be in the Arena Saturday Night. Packs / Dens will be able to submit Songs and Skits for the campfire starting at the Leadership Meeting. Submissions must be in by Check time Saturday.

Lost and Found

If you lose anything or if you found something that does not belong to you, we ask for it to be turned in to the Administration Building or the Trading Post . If an item is found with a name, we will attempt to return it to that person. Hood Scout Reservation is not responsible for the loss of any items or devices at camp. Remember... A Scout is Trustworthy.



CUB SCOUT FAMILY CAMP PROGRAM

Riding Bikes

A bike is a great way to get around camp. Hood Scout Reservation also offers mountain biking trails. Anyone with a bike on camp must obey the following rules:

- Helmets must be used at all times and be buckled.
- Pedestrians always have the right of way.
- Bikes cannot block trails, walkways, roads, or entrances to buildings.
- Bikes should be parked in bike racks.
- No Riding Bikes After Dusk.
- Hood Scout Reservation is not responsible for any damages to bikes.

Participants with Special Needs

The Boy Scouts of America strives to include everyone with age appropriate activities. All facilities have been modified for handicapped participants , including a campsite. If you have a special requirement for camp, please contact the Camp Director at least one week prior to camp to make arrangements.

Camper Security

In an effort to provide a safe environment for all, All Campers and Staff will be required to wear an armband at all times. This provides the ability to identify those who have not checked in with our administration. If an armband is lost, please come to the administration building for another.

Buddy System

Scouts are friendly and kind. Having a buddy to do things with makes camp a lot more fun, plus helps keep everyone safe. We ask that every Scout travels with a buddy (preferably a parent) around camp. Units are asked to move around camp as a group.

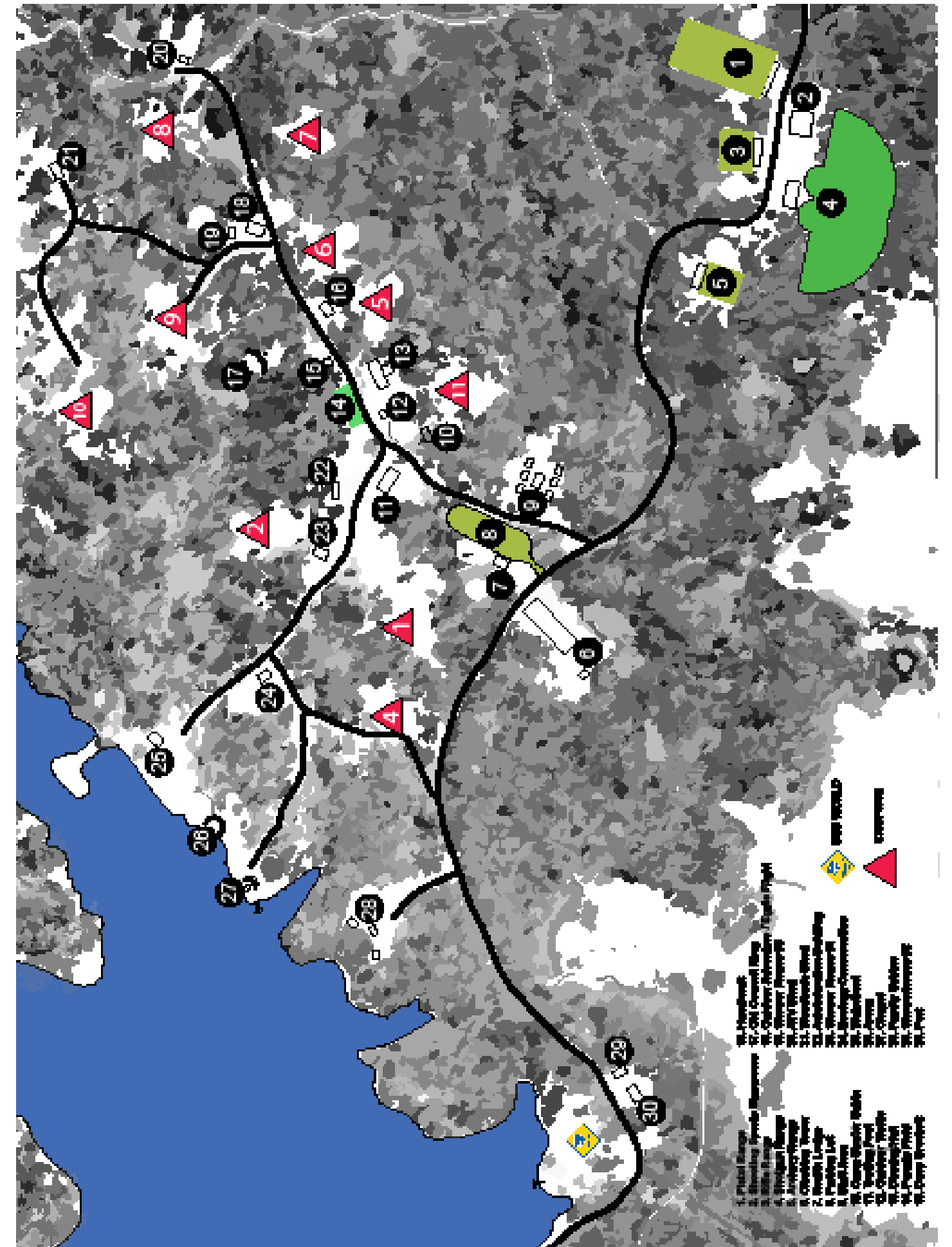
Wild Life

Please be mindful about local wildlife. Snakes are common around camp. We also have deer, turkey, possums, raccoons, and other animals on the property. This is their home, we are the visitors. Do not leave food or trash unattended or unsecured in your campsite.



APPENDIX

MAP OF HOOD SCOUT RESERVATION





Hood Scout Reservation

SHORT TERM CAMPING • GENERAL CAMP USE FORM

REQUEST FORM AND FEES ARE DUE TWO WEEKS PRIOR TO REQUESTED USAGE DATE

UNIT INFORMATION

☐ PACK☐ TROOP☐ CREW☐ SHIP☐ POST

BSA UNIT #CHARTER PARTNER

DistrictCouncil

GROUP LEADER INFORMATION

NAMEEMAIL

ADDRESS

PHONECITYSTATEZIP

SECOND ADULT LEADER

NAMEEMAIL

ADDRESS

PHONECITYSTATEZIP

REGISTERED LEADERS		TRAINING						
PROVIDE THE COMPLETION DATES FOR ALL TRAININGS THAT APPLY		YOUTH PROTECTION	WEATHER HAZARD	FIRST AID & CPR	BALOO	OUTDOOR LEADER SKILLS	SAFE SWIM DEFENSE	SAFETY AFLOAT
1.								
2.								
3.								
4.								
5.								
TOTAL LEADERS			TOTAL SCOUTS		TOTAL ADULTS		TOTAL OTHER YOUTH	

CAMPING INFORMATION

☐ CAMPSITE #☐ CUBWORLD☐ PRIMITIVE CAMPING AREA

Arrival (Date | Time)Departure (Date | Time)

Confirm your check-in time with Camp Ranger or Campmaster prior to your arrival.

UNIT COMMITTEE APPROVAL (Signatures Required)

COMMITTEE CHAIRDATE

CHARTER ORGANIZATION REPRESENTATIVEDATE

PAYMENT INFORMATION

TOTAL PARTICIPANTSX \$10 =

TOTAL FACILITIES USAGE FEES=

TOTAL PROGRAM FEES=

(SEE BACK FOR FEES)TOTAL

ANDREW JACKSON COUNCIL APPROVAL

DATE RECEIVEDAMOUNT RECEIVED

Hood Scout Reservation

SHORT TERM CAMPING • GENERAL CAMP USE FORM

REQUEST FORM AND FEES ARE DUE TWO WEEKS PRIOR TO REQUESTED USAGE DATE

FACILITIES RATES				
FACILITY	CAPACITY	RATE	DESCRIPTION	NOTES
CAMPSITES 1-10	50-100 People	No Charge	Small Shelter w/ Picnic Table, Lights & Fans, Fire Ring	No Lights or Fans in CS 4 or 10
CUBWORLD	50-150 People	No Charge	Large Area with Central Bathroom Access	Multiple Units can camp in this area
PRIMITIVE CAMPING AREA		No Charge	Campsite in the undeveloped areas of HSR	Unit will have to pack water and other supplies.
STAFF CABINS 10 Cabins	8 People per Cabin	\$100 per Night	4 Bunk beds with mattresses. Lights, Heating, and AC. Access to the Staff Central Bathrooms	
DIRECTOR'S CABIN	9 People per Cabin	\$150 per Night	1 private room, 4 bunk beds, bathroom, Heating & AC.	
LARGE PROGRAM SHELTER		\$50 per Day	Lights, 4 to 5 picnic tables	Ecology Handicraft
SMALL PROGRAM SHELTER		\$30 per Day	Lights, Fan, 2 to 3 picnic tables	Davy Crockett Outdoor Thrills

PROGRAM RATES Programs must be approved by Program Committee Chairs			
PROGRAM	CAPACITY	RATE	DESCRIPTION
HSR CHALLENGE COURSE PACKAGE #1	50 People	\$50 per person	Climb & Repel using the HSR Tower 50' & 30' areas
HSR CHALLENGE COURSE PACKAGE #2	50 People	\$50 per person	Saferoller Course Your unit will have to work through 8 obstacles 30' off the ground. Swing by Choice Each participant chooses when they swing.
HSR CHALLENGE COURSE PACKAGE #3	50 People	\$50 Per person	Dual Zip Lines Race down the over 400' zip line.
HSR ATV ATVI SAFETY COURSE	8 participants	\$75 per Person	Take the ATVI Safety Course & Trail Ride around HSR. Scouts must be at least 13 years old. Scouts will have to wear long pants, boots with a heel.
HSR MOUNTAIN BIKING	15 Participants	\$20 per bike per day	\$20 if the participant uses HSR bikes and equipment. HSR equipment limited to 15 people.
HSR SHOOTING SPORTS RIFLE	10 Participants Minimum	\$30 per person	HSR supplies the safety equipment, firearm, rounds, and targets.
HSR SHOOTING SPORTS SHOTGUN	10 Participants Minimum	\$50 per person	HSR provides the safety equipment, firearm, shells, clays, and throwers
HSR SHOOTING SPORTS ARCHERY	10 Participants Minimum	\$20 per person	HSR provides the bow, arrows, safety equipment, and targets.
HSR AQUATICS PACKAGE #1 (Swimming)	50 People Maximum	\$25 Per Person	Swimming in the Swimming Area (Use the Non-swimmer, Beginners, and Swimmers Area) For half day program Two Certified Lifeguards provided.
HSR AQUATICS PACKAGE #2 (Swimming)	25 People Maximum		Swimming in the Swimming Area (Use the Non-swimmer, Beginners, and Swimmers Area) A minimum two of unit leaders must be current in Safe Swim Defense and present at all times. At least one unit leader on site is current in CPR & First Aid.
HSR AQUATICS PACKAGE # 3 (Boating)	50 People Maximum	\$45 per Person	The Unit chooses the two types of boats that they want to use. Scouts can choose from Board-sailing, Kayaking, Canoing, Rowing. A minimum two of unit leaders must be current in Safe Swim Defense and present at all times.. At least one unit leader on site is current in CPR & First Aid.
HSR LAKE FISHING			Please HSR Use Guide for details on fishing.

GENERAL RULES AND POLICIES | PLEASE REVIEW THE HSR USE GUIDE FOR ALL HSR POLICIES