



**Mississippi Riverlands Council
Cub Scout Family Camps
Camp Guide**



**2026 Cuboree
April 24-26, 2026
Under the Stars**

Cub Scout Program Director – Tre' Burch
Camp Ranger – Grayson Erwin
Staff Advisor - Kimberly Paul

CUB SCOUT FAMILY CAMP

Welcome to Hood Scout Reservation! As you may know, Cub Scouting is a family-centered program, and one of its most rewarding elements is the opportunity to enjoy the outdoors together. When these two come together, the result is an unforgettable experience—Cub Scout Family Camp.

Cub Scout families are invited to participate in council-organized camping events designed to provide fun, adventure, and meaningful shared experiences. These programs are planned and conducted by the Council’s Cub Scout Outdoor Program Committee and typically span two nights.

In the following pages, you will find the guidelines, policies, and procedures that apply to all Cub Scout Family Camps—Akela Cub Weekend (fall), Polar Bear Weekend (winter), and Cuboree (spring)—along with information specific to this event.

All Scouts, leaders, and family members are expected to conduct themselves in accordance with the Scout Oath and Scout Law throughout their time in camp.

Table of Contents	
Topic	Page #
General camp polices	Page 3
Vehicles in camp	Page 4
Check-in / Check-out	Page 4
Cub family camp staff	Page 5
Emergency Procedures	Page 6
Health Lodge	Page 7
Activity rotation schedule	Page 11
Cub Scout family program	Page 8
Specific information for 2026 Cuboree	Page 5
Recommended packing list	Page 10
Schedule for 2026 Cuboree	Page 12
Description of Program for 2026 Cuboree	Page 13
Map of Hood Scout Reservation	Page 14

General Camp Policies

Tobacco:

The Scout Oath reminds us to keep ourselves physically strong, and the Scout Law reminds us to be clean. The use of tobacco products is harmful to health and inconsistent with these values. The use of cigarettes, cigars, pipes, chewing tobacco, vaping devices, and electronic cigarettes is not permitted at Hood Scout Reservation.

Alcohol & Drugs:

The possession or use of alcoholic beverages, illegal drugs, or the misuse of any prescribed medication is strictly prohibited. Any individual or group found in violation of this policy will be required to leave camp immediately.

Firearms and Fireworks:

Firearms and fireworks are not permitted at Hood Scout Reservation. If you have a legally registered firearm, it must remain secured in your locked vehicle or be checked in at the Shooting Sports Area.

Fuels:

Propane and liquid fuels are permitted but must be always used under adult supervision. Please ensure that all empty propane containers are disposed of properly.

Campfires:

Campfires are only allowed in designated fire rings. All fires must be always supervised by an adult and fully extinguished before leaving the area. In accordance with the Hood Scout Reservation Forestry Plan, no outside firewood may be brought onto camp property. Portable raised fire pits may be permitted for large group events with prior approval. Do not move fire rings and always practice proper fire safety.

Pets:

Pets are not allowed at Hood Scout Reservation. Service animals are permitted but must have proper documentation and wear appropriate service identification.

Please contact us in advance if you need to bring a service animal.



Vehicles in Camp



The speed limit throughout camp is 5 miles per hour, including the main camp road. All vehicles must be parked in designated parking areas to ensure access for emergencies, law enforcement, and camp vehicles. Please Park, lock your vehicle, and keep your keys with you. No vehicles are permitted past the service road gate after dark. Families are encouraged to transport camping equipment using personal wagons or carts, or by using camp-provided wheelbarrows.

The service road gate will be open from 4:00 PM until dusk on Friday. During this time, you may drive in to unload your vehicle, but you must return your vehicle to the parking lot before setting up camp. The gate will close at 7:30 PM or at dark, whichever comes first. After that time, all gear must be transported to campsites by foot. Please return any borrowed wheelbarrows to the parking lot promptly after unloading.

CHECK-IN

All participants must register online at <https://scoutingriverlands.org/>
Check-in will take place during the following times:

- Friday: 4:00 PM – 7:30 PM (Main Road in front of the Shooting Sports Building)
- Saturday: 7:00 AM – 8:15 AM (Main Road near the Service Road entrance)

At check-in, each participant will receive a colored armband, which must be worn at all times throughout the weekend. You will also receive a parking pass—please write your last name, unit number, and campsite number on the pass and place it on your dashboard. A printed schedule for the weekend will also be provided.



If you need to leave camp during the day, please notify a Hood Scout Reservation staff member so the gate can be opened for you.

Campsites: All campsites must be left clean and free of trash and debris. Central shower facilities should be left in clean condition. Stack any remaining firewood neatly near the fire ring. Any additional sticks or wood should be moved to the wooded edge of the campsite.

Trash Removal: All trash must be removed from your campsite. Tied trash bags may be placed along the main road at the entrance to your campsite prior to departure. Camp staff will collect the trash from these locations.

Please report any maintenance concerns to the Ranger or Camp master.

Camp Staff Requirements and Information

The Cub Scout Outdoor Program follows the Camp Staff Requirements outlined in NCAP Standards. Camp staff includes all paid and volunteer personnel who interact with camp participants, including employees, CITs, and ongoing volunteers.

Adult Camp Staff Members:

Must be at least 18 years old, registered with Scouting America as camp staff, and must complete Youth Protection Training and Hazardous Weather Training.

Youth Camp Staff Members:

Must be at least 14 years old, registered with Scouting America as camp staff, and must complete Youth Protection Training and Hazardous Weather Training.

Camping

General Information

Whether you are new to Scouting or an experienced camper, preparation is key to a successful weekend. Packs are encouraged to assist families, especially those new to camping—in preparing for the event. Many units choose to hold a practice campout prior to Cub Scout Family Camp to work out logistics, learn how to set up equipment, and ensure everyone is ready.

Weather

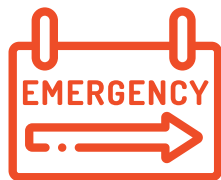
Weather can greatly impact your camping experience, so plan accordingly:

- Expect temperatures at camp to feel 5–10 degrees cooler than the forecast for Hazlehurst.
- Be prepared for both dust and mud.
- Consider wind chill and heat index when packing clothing.
- Consult your Scout handbook or speak with your Cubmaster if you have questions.

Always prepare for rain, even if it is not in the forecast.

Specific Information for Cuboree 2026

1. All Cub Scouts must be accompanied by a parent or legal guardian at all times
2. Be respectful, kind, and patient with others
3. Follow all directions given by camp staff (both youth and adults)
4. Dress appropriately for the weather
5. Have fun!



Emergency Procedures

While emergencies are never planned, they can happen. Camp staff have taken steps to minimize risks and respond quickly; however, staff cannot always be everywhere. In the event of an emergency, follow all directions given by camp staff immediately. If you hear the continuous ringing of the camp bell, proceed quickly and calmly to the parade field.

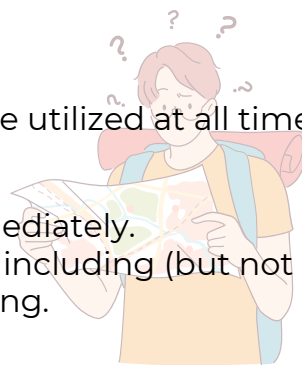
Child Abuse, Youth Protection, and Membership Violations:

Any suspected or observed abuse, or violation of Youth Protection policies or the Guide to Safe Scouting, must be reported immediately to the Camp Director or a designated staff member. Reporting is required by law.

Lost Campers:

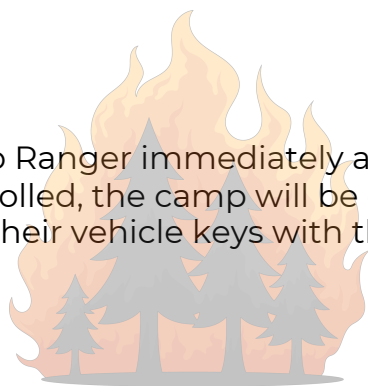
To help prevent lost campers, the buddy system must be utilized at all times. If a camper is missing:

- Notify a Hood Scout Reservation staff member immediately.
- Provide a detailed description of the missing Scout, including (but not limited to) height, weight, physical description, and clothing.



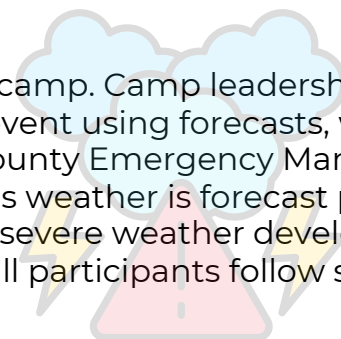
Fire:

Notify the Camp Ranger immediately and ensure all personnel are safe. If a fire cannot be controlled, the camp will be evacuated. All drivers are strongly encouraged to always keep their vehicle keys with them.



Severe Weather:

Severe weather is one of the most significant risks at camp. Camp leadership actively monitors weather conditions before and during the event using forecasts, weather radios, and direct communication with the Copiah County Emergency Management Center and the National Weather Service. If hazardous weather is forecast prior to camp, the Camp Director may postpone the event. If severe weather develops during camp, staff will provide instructions. It is critical that all participants follow staff directions immediately to ensure safety.





HealthLodge



To help maintain a safe environment, all participants, including Scouts, siblings, parents, guardians, guests, leaders, and staff — An Annual Health and Medical Record must be on file with your unit. At a minimum, Parts A and B must be completed. Unit leaders should keep these forms in a secure but easily accessible location during the event. A medic will be on-site while camp is in session. If the medic is not in the Health Lodge, please locate a staff member with a radio for assistance.

Injuries:

All injuries must be reported immediately to the Health Lodge. An accident report must be completed for every incident. In the event of a serious medical emergency, transportation will be provided. The nearest hospital is Copiah County Medical Center.

Campsites



Hood Scout Reservation offers a variety of campsite sizes. Cubmasters may request their first and second campsite choices by emailing cubscoutingwithtiny@gmail.com. Assignments are based on unit size and total camp attendance, and some units may be required to share campsites. Established campsites (1-10) include:

- Water access • Pavilion (with fan, lights, and electrical outlets—except campsites 4 and 10) • Tent platforms with frames*
- Fire ring

Additional primitive campsites may be used when needed, including Cub World, Ecology Conservation, Gilwell Field, the field in front of Campsite 1, the area behind the Administration Building, the Handicraft Shelter, and the old archery range. Units camping in primitive areas must follow Leave No Trace principles.

Tent Platforms and Frames:

These are designed for canvas tents used during summer camp. Families may use the platforms for their own tents; however, do not attach guidelines, ropes, or equipment (such as hammocks) to the metal frames. Any damage to tent frames will be charged to the unit.

Hammock Camping

Hammock camping is permitted but must be set up between trees or in designated hammock areas only.

- No hammock stacking • Do not attach hammocks to pavilion structures or tent frames





Cub Scout Family Camp Program

Program Overview: A detailed description of the program for the 2026 Cuboree Weekend can be found on page 14.

Unit Leaders Meeting

A brief meeting for unit leaders and staff will be held on Friday at 9:00 PM in the Dining Hall. This meeting will cover important information for the weekend, including any schedule updates, activity locations, a review of camp rules and guidelines, and time for questions. It is highly recommended that at least one representative from each unit attend.

Scouts' Own Service

A Scout is Reverent. A devotional will be provided to each unit for use as a Scouts' Own Service at a time of your choosing during the weekend.

Closing Campfire Program

The Closing Campfire Program will take place Saturday evening in the Arena. Packs and dens are invited to participate by submitting songs or skits. Sign-ups will begin at the Friday night leaders' meeting, and all submissions must be completed by Saturday afternoon. A specific deadline will be announced during the meeting.

Lost and Found

If you find an item that does not belong to you, please turn it in to the Administration Building or the Trading Post. If the item is labeled, staff will make every effort to return it to its owner. Hood Scout Reservation is not responsible for lost or damaged personal items. Remember... A Scout is Trustworthy.

Riding Bikes

Bicycles are a great way to get around camp, and Hood Scout Reservation offers mountain biking trails. For everyone's safety, the following rules must be followed:

- Helmets must be worn and properly always fastened
- Pedestrians always have the right way
- Do not block trails, walkways, roads, or building entrances
- Bikes should be parked in designated racks
- No riding after dusk

Hood Scout Reservation is not responsible for damage to bicycles.

Participants with Special Needs

Scouting strives to provide inclusive experience for all participants through age-appropriate activities. Camp facilities have been adapted to accommodate individuals with special needs, including one accessible campsite. If you have specific needs or accommodation, please contact the Camp Director at least one week prior to camp so arrangements can be made.

Camper Security

To help maintain a safe environment, all campers and staff are required to always wear their event armbands. This allows staff to easily identify registered participants. If an armband is lost, please report to the Administration Building for a replacement.

Buddy System

A Scout is Friendly and Kind. The buddy system helps ensure safety and makes the camp experience more enjoyable. All Scouts should travel around camp with a buddy, preferably a parent or guardian. Units are encouraged to move together as a group whenever possible.

Wildlife

Please be mindful of local wildlife. Animals such as snakes, deer, turkey, opossums, and raccoons are common in the area. Remember: this is their home—we are the visitors. Do not leave food or trash unattended or unsecured in your campsite.

Fishing

Fishing is encouraged at Hood Scout Reservation. Participants must bring their own fishing equipment.

Fishing Limits:

- **Bass**
 - Under 14" - must be removed from the lake
 - Over 14" - must be returned to the lake
- **Bream**
 - Up to 5 per person may be kept if you plan to eat them
 - All others must be released
- **Crappie**
 - All must be removed from the lake
- **Catfish**
 - All must be removed from the lake

Additional Guidelines:

- Do not fish behind the Arena or in Aquatics areas
- Do not clean fish in the showers or latrines
- Provide a catch report (species & number removed) to the Ranger at check out



CAMP

PACKING LIST.

XXX GEAR XXX

- TENT WITH RAIN FLY & STAKES
- BACK PACK OR DUFFEL BAG
- SLEEPING BAG PILLOW
- SLEEPING PAD OR COT
- SUNGLASSES
- HEADLAMP OR FLASHLIGHT
- LANTERN (OPTIONAL)
- CAMP CHAIR BUG SPRAY
- CANTEEN OR WATER BOTTLE
- MESS KIT: PLATE, MUG, UTENSILS
- MARSHMALLOW ROASTING STICK
- _____
- _____
- _____
- _____

>> COOKING <<

- DINNER FOOD OR SACK DINNER
- SNACKS OR CANDY
- S'MORES (OPTIONAL)
- HOT CHOCOLATE POUCHES & MUG
- BRING COOKING & EATING UTENSILS!
- NAPKIN, PAPER TOWELS OR BANDANA
- DISH SOAP & SCRUB SPONGE
- MESH BAG FOR MESS KIT (OPTIONAL)
- _____
- _____

^^^ CLOTHING ^^

- SLEEPWEAR JACKET
- FULL CHANGE OF CLOTHING
- SOCKS & UNDERWEAR
- HAT (FOR WARMTH OR SHADE)
- STURDY SHOES OR BOOTS
- SWIM SUIT (IF SWIMMING)
- RAIN GEAR OR PONCHO

CHECK THE WEATHER BEFORE YOU PACK!

TOILETRIES

- DEODORANT SUN BLOCK
- TOOTH BRUSH & TOOTH PASTE
- SHAMPOO & SOAP (IF SHOWERING)
- TOWEL TOILET PAPER/KLEENEX
- COMB OR HAIRBRUSH
- HAND SOAP CHAPSTICK
- MEDICATIONS (IF NEEDED)
- SMALL FIRST AID KIT #####
- _____



CUB SCOUT SIX ESSENTIALS



FIRST-AID KIT



FLASHLIGHT



SUN PROTECTION



TRAIL FOOD



WATER BOTTLE



WHISTLE

Group Rotation Sessions

Time	Group 1	Group 2	Group 3	Group 4
9:00 am to 9:55 am	Archery	Boulder Wall	Crafts	Games
10:00 am to 10:55 am	BB Guns	Archery	Games	Waterfront
11:00 am to 11:55 am	Boulder Wall	BB Guns	Waterfront	Crafts

Lunch with your unit

2:00 pm to 2:55 pm	Crafts	Games	Archery	Boulder Wall
3:00 pm to 3:55 pm	Games	Waterfront	BB Guns	Archery
4:00 pm to 4:55 pm	Waterfront	Crafts	Boulder Wall	BB Guns



Schedule

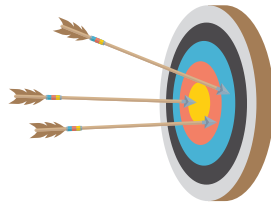
Friday		
4:00 pm to 7:30 pm	Check in	Main road in front of shooting sports building
At Dusk	Service Road Gate Locked	All Vehicles Must be out of camp - Unless attached to a unit trailer
9:00 pm	Leaders Meeting	Dining Hall
9:30 pm	Staff Meeting	Dining Hall
10:00 pm	Lights Out	All of Camp
Saturday		
7:00 am to 8:15 am	Check in	Main Road just before Service Road
8:00 am to 8:15 am	Dance Music	Parade Field
8:15 am to 8:45 am	Opening Ceremony	Parade Field
9:00 am to 11:55 am	Moring Rotation Sessions	Program Areas
12:00 pm to 2:00 pm	Lunch & Camp site cleanup	Your Units assigned campsite
2:00 pm to 4:55 pm	Afternoon Rotation Sessions	Program Areas
5:00 pm to 7:00 pm	Dinner & Camp site cleanup	Your Units assigned campsite
7:15 pm to 7:30 pm	Dance Party	Arena
7:30 pm to 8:00 pm	Closing Campfire	Arena
8:00 pm to 9:00 pm	Stargazing	Arena Area
9:00 pm	Leaders' Cracker Barrel	Dining Hall
Sunday		
8:00 am to 10:00 pm	Check out	Campsites & Administration
10:00 am	Camp Closed	Please be safe traveling home!

Description of Program for 2026 Cuboree

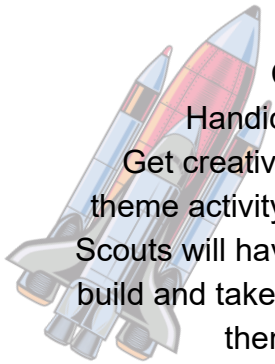
Get ready for an action-packed weekend full of adventure, teamwork, and fun! The Cuboree program is designed to give Scouts and their families a chance to explore new activities, build skills, and create lasting memories.



Shooting Sports:
Archery and BB -
Take aim and test
your focus as you
shoot at targets
under the guidance
of trained staff.



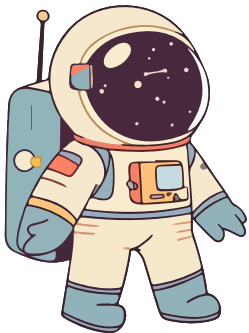
**Adventure
Activities:**
Boulder Wall -
Tower Field -
Challenge yourself
on the bouldering
wall.
Can you make it all
the way up and
across?



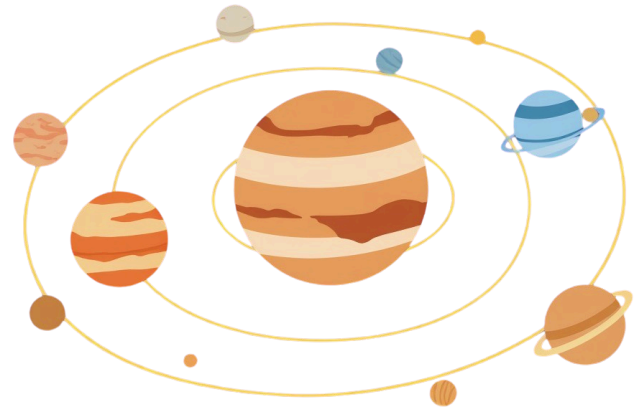
Crafts:
Handicrafts Area -
Get creative with this year's
theme activity - Rocket Science!
Scouts will have the opportunity to
build and take home a fun, space-
themed craft.



Waterfront:
Canoeing - Enjoy time on
the water while learning
basic paddling skills in a
safe, supervised
environment.

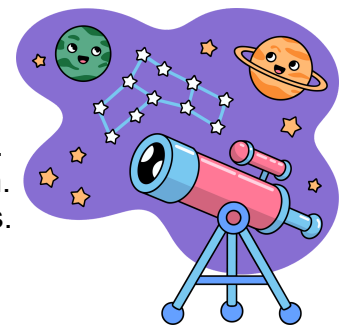


Games & Teams challenges -
Join in on high-energy, team-based
games that promote teamwork and
friendly competition:
Astronaut Training Camp - Test your
skills and see if you have what it
takes to be space ready.
Planet Hopping - Race your team
across the "galaxy" in this relay-
style challenge.



Activities & Contests - There are plenty of opportunities for Scouts and families to participate and show off their skills:

- Scavenger Hunt - Explore camp while searching for hidden items.
- Cobbler Cook-off - Show off your camp cooking skills with a Dutch Oven cobbler.
- Cleanest Campsite Award - Keep your campsite in top shape for a chance to win.
- Best Scouting Spirit Award - Recognizing enthusiasm, teamwork, & Scout values.
- Most Creative Skit or Song - Perform at the closing campfire and impress the crowd.



MAP OF HOOD SCOUT RESERVATION



HOOD SCOUT RESERVATION

LEGEND

TRAILS

- | | | | |
|-----------------------------|-----------------------------|----------------------------|---------------------|
| 1. Camp Entrance | 8. Pioneering | 17. Handcraft Area | 25. Pirate Ship |
| 2. Rifle Range | 10. Outdoor Skills | 18. Outdoor Adventure | 26. Fort |
| 3. Shooting Sports Building | 11. Trading Post | 19. Kickapoo Waterfront | 27. Cub World |
| 4. Pistol Range | 12. Chief's Lodge | 20. McLarty-Cooke Arena | 28. Challenge Tower |
| 5. Steadman Shotgun Range | 13. Dining Hall | 21. Ecology & Conservation | 29. C.O.P.E. Course |
| 6. Archery Range | 14. Sports Area | 22. Gerald Kees Chapel | 30. Boat Ramp |
| 7. Staff Housing | 15. Administration Building | 23. Family Cabins | CH Camp Site |
| 8. Health Lodge | 16. Davy Crockett Area | 24. Tee Pees | |
-
- | | |
|--|-------------|
| | BROTHERHOOD |
| | PERIMETER |
| | BIG TREE |
| | BEAR DEN |

WWW.BSA-JACKSON.ORG

