

# 2019 Ripley Rendezvous



May 17<sup>th</sup>, 18<sup>th</sup> & 19<sup>th</sup>

Unit Leaders Guide

Like us on Facebook at Ripley Rendezvous

*It is the vision of the 2019 Ripley Rendezvous event to provide scouts and leaders with a safe and unique outdoor experience that engages, challenges and thrills all that attend.*

*It is our Mission that everyone will discover the hands-on excitement of learning, and exploring, while building the confidence to meet those challenges.*

# Table of Contents

Registration .....	3
Check In .....	3
Motor Vehicles / Parking / Pedestrians.....	4
Health and Safety .....	4
Emergency Phone Numbers .....	4
Reporting Incidents in Camp .....	4
Youth Protection Policy .....	5
Accommodations.....	5
Sub Camp Information .....	5
Restrooms.....	5
Unit & Personal Equipment.....	6
Unit Equipment .....	6
Personal Gear .....	6
Optional Personal Items .....	7
Program Descriptions .....	7
Action Centers .....	7
Adventure Program .....	7
Extreme Program.....	7
Military Museum .....	7
Saturday Evening.....	7
Sunday .....	7
Check out.....	7
Sub Camps Map.....	8
Lost and Found .....	9
Policy on Smoking, Alcohol, Drugs and Weapons .....	9
EXPLOSIVES & AMMUNITION.....	9
Participating Area Councils.....	10
Tentative Schedule .....	11
Cantonment Map .....	12
Emergency Phone Numbers .....	12

## Registration

- **REGISTRATIONS AFTER 05/08/2019 will be \$75.**
- Indicate the program options (Action, Adventure, or Extreme) for each participant.
- The Adventure and Extreme programs will be down range for half the day so come prepared.
- Registrations will be confirmed with sub camp area and program choices. (1800 Adventure, 700 Extreme)
- There will be a small online service fee charged to each registration
- If you have not received confirmation within 10 days of the event, please contact the Central Minnesota Council, BSA office at 320-251-3930

## Check In

- You will receive special instructions for check-in within the week after the event registration closes on May 8<sup>th</sup>. If you haven't seen anything, please contact our office at 320-251-3930.
- Check-in is from 5 p.m. to 11 p.m., Friday May 17, welcome letter will specify procedures. Only two people from your unit will need to come to check-in. (Hangar/MWR Bldg. 8-195)
- The 2019 Ripley Rendezvous is designed for Scouts BSA members, Ventures', and Explorers. Boys and Girls who are currently Webelos in the 5<sup>th</sup> grade and who will transition into the Scout Troop as of June 1<sup>st</sup>, 2019 are able to participate as Scouts for this event and should register through a Troop. No Cub Scouts may participate in this event!
- **NO HEALTH FORMS or NO SIGNATURE = NO PARTICIPATION**
- Adult Leadership: It is mandatory that all units have two-deep leadership, per BSA guidelines. 1 to 5 ratios of leaders to youth is recommended.
- Be patient when you arrive at the gate and while you are waiting to check in. Camp Ripley will be doing their best to ensure that the post remains secure during our check in process and during the weekend events. It's a big deal, be sure to remain respectful and patient.
- Be sure **all adults that are driving bring a valid drivers' license** to pass Camp Ripley Gate-**it's required. All adults must have a valid ID**, it will be checked at the gate against our Roster by Camp Ripley Staff (required).
- Put your colored parking pass in the window of each vehicle before entering Camp Ripley.
- **Drivers are forbidden to use cell phones while driving-** this is a Camp Ripley Post Policy and could result in a fine.
- *There should be no smoking within sight of Scouts during the weekend and dispose of properly!*
- *It is **required** that all registered adults from each unit be Youth Protection Trained.*
- Be sure to bring a health form, parts A and B, for each person in attendance from your unit. You will turn a set into the check in area and you should have a set for your unit as well. You will get the health forms back at check out when you receive your event patches.
- **Scouts are guests of the Minnesota National Guard & Camp Ripley.** We (the Scouts) are not their primary focus during our stay on post. The Minnesota National Guard will do their best to display, demonstrate, and include us in the cool things they have available.

## Motor Vehicles / Parking / Pedestrians

- Trailers may be dropped off in the campsite, no cars/trucks/vehicles can remain at the campsite
- Do not block roadways or sidewalks when parking
- Never ride in the bed of a truck
- Speed limits must be obeyed
- No skateboards, inline skates, bikes, scooters or 4 wheelers
- Stay off the roadway except to cross at designated areas
- Walk facing traffic
- Carry a flashlight at night
- Give Emergency vehicles the right-of-way
- Stay in your designated scouting areas

## Health and Safety

***Emergency Medical, Please DO NOT use 911!***

### Emergency Phone Numbers

- **Headquarters Building 21-1 call: 320-616-7221**
- **A staffed 24-hour First Aid station will be available at Building 23-1 call: 320-616-7222**
- There will be first aid stations in all program areas
- On-site EMT and security personnel provided

### Camp Ripley Emergency #

Camping Area Emergency 320-632-7375

Range Emergency 320-616-3137

Ripley Rendezvous leadership, Security numbers, plus opt-in text messaging capabilities will be included in check in packet.

### Reporting Incidents in Camp

In case of an emergency, such as Fire, bodily injury, or lost person, report to the Event Headquarters in Building 21-1 call: 320-616-7221

- Completed Health Forms Part A and B, for everyone, must be presented to the Sub Camp staff upon check-in (down loadable at BSACMC.org)
- Each unit is responsible for providing a first aid kit at their camp site
- Distribution of medicines is the responsibility of the unit leadership. (Follow the Guide to Safe Scouting: XI Medical Information – under Prescriptions.)
- If you have an adult or youth with any physical or behavioral conditions that limit participation, please notify the Central Minnesota Council at 320-251-3930 to make the appropriate accommodations.
- **NO HEALTH FORM or NO SIGNATURE = NO PARTICIPATION**

## Youth Protection Policy

All youth Protection Policies of the Boy Scouts of America will be followed during this event. Any incidents should be reported immediately to your Council's Scout Executive or if unavailable, contact headquarters at the **Building 21-1** to receive instructions and support.

## Accommodations

- The 2019 Ripley Rendezvous is a Jamboree style camp out
- Every troop will be assigned to a sub-camp area and will be directed at arrival
- Unit Trailers will be allowed in the camp sites. However, camping space and parking is limited, be sure to bring only the vehicles you need, the tents and gear that your unit will need. Only the vehicle pulling the trailer will be allowed into the site to drop off the trailer. Then those vehicles need to park in Parking area. No vehicles can be left in camping area. NO EXCEPTIONS.
- No open fires will be allowed due to safety concerns. Units can use cooking stoves and charcoal but utilize leave no trace. Bring something to put the charcoal on.
- There will be no running water at camp sites, **units will need to bring water containers to be filled at sites located away from the camp sites.** Please be sure to have Scouts bring personal water containers as well.
- **Units will be responsible for bringing and cooking their food for all meals except the Saturday Lunch meal. Saturday Lunch will be provided. If you have attendees with special diets it is the individuals/parent's responsibility to provide a safe lunch and meals for them.**
- **Food –all units will bring/provide their own;**
  - **Friday Supper or eat before you arrive**
  - **Saturday breakfast**
  - **Saturday supper**
  - **Sunday breakfast**

## Sub Camp Information

- **Event Headquarters will be in the (Bldg 21-1)**
- **First Aid stations (Bldg 23-1 & Bldg 21-1)**
- Water points (Bldgs 21-27, 21-28, 22-134, 23-29, 23-27)
- Gray water dump locations – Inside Buildings TBD, \_\_\_\_\_
- Each Sub Camp may have cooking stoves but not ground fires. (Leave No Trace Camping)

## Restrooms

- Participants will utilize portable restrooms during the weekend.
- Sub Camp officials will monitor these facilities
- Report the depletion of supplies to the headquarters building (Bldg 21-1)
- Do not throw trash in the toilets

## Unit & Personal Equipment

Camp Ripley / 2019 Ripley Rendezvous personnel are not be responsible for lost or stolen items. Unit Adult & Junior leaders are expected to inspect their campsites daily to maintain the high standards of BSA. Ripley Staff members will inspect your sites daily and your help will be greatly appreciated in keeping Camp Ripley clean

**Unit Equipment** *(for a more complete list refer to Scout hand book)*

- **5 gallon water containers for troop water**
- A Supply of **trash bags- Dumpsters & recycling receptacles will be provided throughout the camp please use them (Camp Ripley has a recycling program please review & comply)**
- Troop Identification flags (optional)
- Means of securing valuables
- **First Aid Kit**
- Patrol box and Cooking Equipment
- Dining fly, tables ,chairs
- Tents
- Cooking stoves and food for meals

### Personal Gear

- **Official Scout Uniform-** Adults and Youth are required to wear the Class A scout uniform (correctly) during the following times;
  - During road travel to and from event
  - Saturday night stage show
  - Sunday morning religious services
- Rain Gear/ Cold weather Gear (Dress for the weather) Gloves/hat/cap
- Personal hygiene items
- Tents if not supplied by unit
- **Sleeping bag/Pillow**
- Sleeping mat or cot
- **Flashlight**
- **Water bottle**
- Extra footwear
- **Tick repellent**
- Sunscreen
- Personal medications
- Troop activity shirt or other troop activity uniform maybe worn during program activities
- **Personal Health Forms**
- Scout Handbook

**At the request of the Camp Ripley National Guard NO Camouflage clothing of any kind is to be worn!**

## Optional Personal Items

- Money for Trading Post and Scout Shop
- Camp Chair or tripod stool for Saturday Evening Show
- Day Pack
- Phone
- Camera

## Program Descriptions

**Action Centers** (open to all scouts) 30 plus exhibits and displays; Scout Skills, Emergency Preparedness, Camping equipment, Team Building Games, Nature, Cooking Area, Ham Radio, Military displays, Adventure Alley and more.

**Adventure Program** (12+ First 1,800 Scouts) Shooting Sports program; 20 gauge Shot gun, Black Powder, .22 rifle, Archery, GaGa Ball, and other activities.

**Extreme Program** (14 + or Venture Crew member) All will be organized in Patrols and challenged physically and mentally throughout the training facility. Obstacle course, Rappelling tower, Military presence, Patrol challenges, Leadership Reaction Course, Bouldering Wall, Slackline, Pioneering and Trebuchet building.

**Military Museum** (Saturday & Sunday) donations encouraged

**Saturday Evening** Camp Ripley Post Commander welcome and address, Stage show with live music, comedian, and additional entertainment, special guest introductions.

**Sunday** Religious Services (Offering a Catholic & Non-denominational), Camp Good Turn

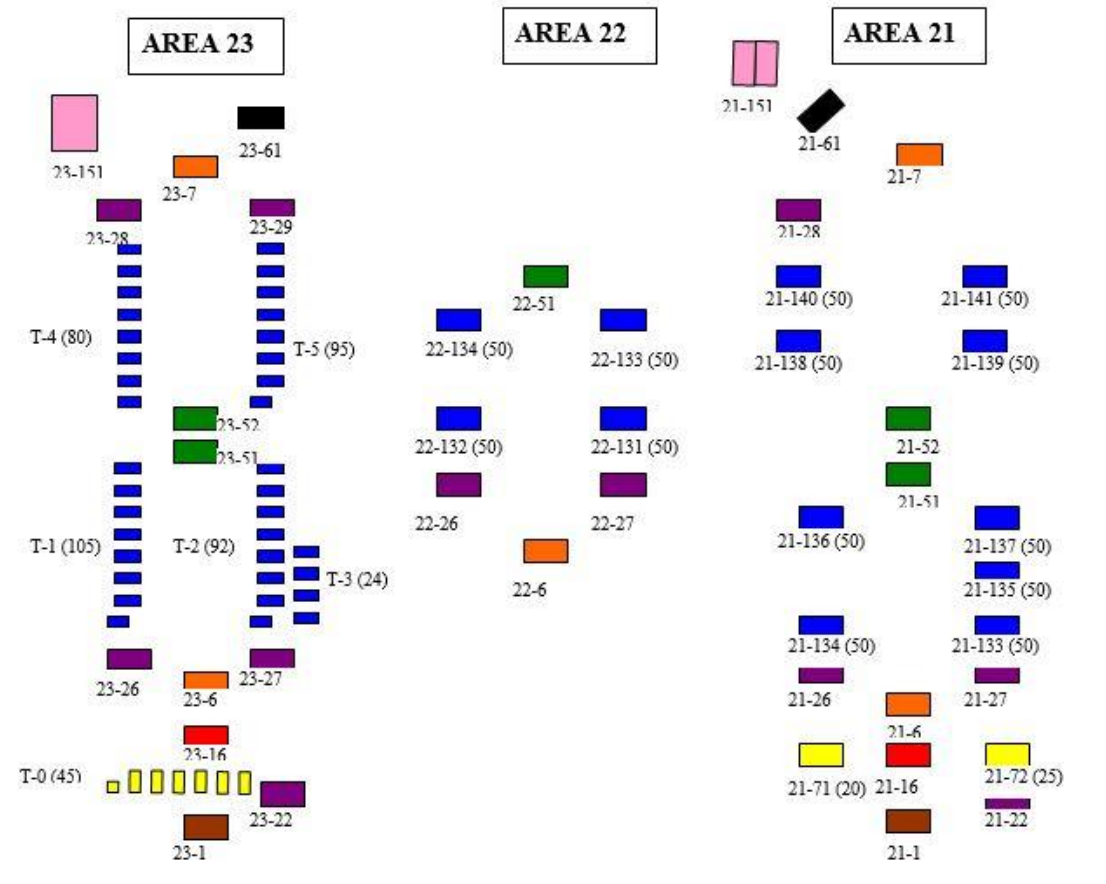
- Catholic Services 8am-9am – Camp Ripley Chapel
- Non-Denominational 8am-9am @ Hangar/MWR (Bldg 8-195)

**Check out**– Front door of Hangar/MWR Building (Bldg 8-195)

**Trading Post** – Hamburgers/Hotdogs, Snacks (Candy & Chips), Gatorade, Water, Pop and much more.

**Scout Shop** – Camping Gear, Knives, Water bottle, Cooking Gear, Flashlights and much more.

## Sub Camps Map



### Key Buildings for 2019

\*\*\*Hangar/MWR Bldg. 8-195 Registration, Leader Meeting, Cracker Barrel, Program, Lost & Found, Staff, Midway Vendors, and VIP Check-ins, Check out (Use Front Door)

\*\*\*Bldg. 21-1 Headquarters Building, 1<sup>st</sup> Aide, Explorers HQ, Lost & Found

\*\*\*Bldg.23-1 Ham Radio and 1<sup>st</sup> Aide

\*\*\*Program Area for Action Center Chickamauga Road across from bldg. 21-1, 23-1

\*\*\*Collins Avenue (North Side of Area 21, 22, 23)-Bus loading & unloading for Extreme & Adventure

\*\*\*Saturday meal distribution bldg. 21-27

\*\*\*Bldg. 22-26 Scout Shop

\*\*\*Bldg. 22-27 Trading Post and Concession Stand

\*\*\*Potable (drinkable) water point hoses located on end of bldg. (Bldg. 21-27, 21-28, 22-134, 23-29, 23-27)

\*\*\*Bldg. 23-22 Order of Arrow Headquarters



## Lost and Found

- A lost and found department will be located at event headquarters (Building 21-1 and Hanger/MWR Bldg. 8-195)
- Persons seeking lost items should report to event headquarters to describe the missing item.
- To guard against loss of valuables everyone should:
  - Mark all personal items with name, council, and unit number
- Store equipment in a locked container when not in use  
(Especially when leaving your camping sites)
- Each unit should plan for the safe storage of members' valuables. Do not wear or carry with you any more valuables than necessary while at the Ripley event

## Policy on Smoking, Alcohol, Drugs and Weapons

While in uniform leaders will not smoke. Please, dispose of your cigarettes properly.

The use of Alcoholic beverages, non-prescription drugs, fireworks, or controlled substances is strictly prohibited. No personal firearms can be brought onto Camp Ripley property. This includes conceal and carry weapons.

## EXPLOSIVES & AMMUNITION

**Camp Ripley is an active Military Training Facility with the primary purpose of training Military Personnel. Should anyone find explosives or ammunition on the ground DO NOT PICK IT UP! Contact a Ripley Staff member at once, to arrange for proper disposal. Please alert your Scouts of this policy.**

## Participating Area Councils

### Central Minnesota Council

1191 Scout Drive  
Sartell, MN, 56377

### Gamehaven Council

1124 11 ½ Street Southeast  
Rochester, MN 55904

### Gateway Area Council

2600 Quarry Road  
LaCrosse, WI 54601

### Twin Valley Council

810 Madison Avenue  
Mankato, MN 56001

### Scouts Canada

Manitoba Council  
2140 Brownsea Dr. NW  
Calgary, AB T2N 3G9

### Northern Star Council

6202 Bloomington Rd  
Fort Snelling, MN 55111

### Northern Lights Council

301 South 7<sup>th</sup> Street  
Fargo, ND 58103

### Sioux Valley Council

3200 West 49<sup>th</sup> Street  
Sioux Falls, SD 57106

### Chippewa Valley Council

710 S Hastings Way  
Eau Claire, WI 54701

### Voyageur Area Council

3877 Stebner Road  
Hermantown, MN 55811

## Tentative Schedule

### **Friday:**

5:00pm-11:00pm	Participant check in Bldg. 8-195
5:00pm-11:00pm	Participant site set up
5:00 pm-10:00pm	Scout Shop Hours – Bldg. 22-26
5:00 pm-10:00pm	Trading Post/Concessions Hours – Bldg. 22-27
9:45pm-10:30pm	<b>Scoutmaster &amp; SPL meeting Hangar/MWR bldg. 8-195 (check in bldg.)</b>

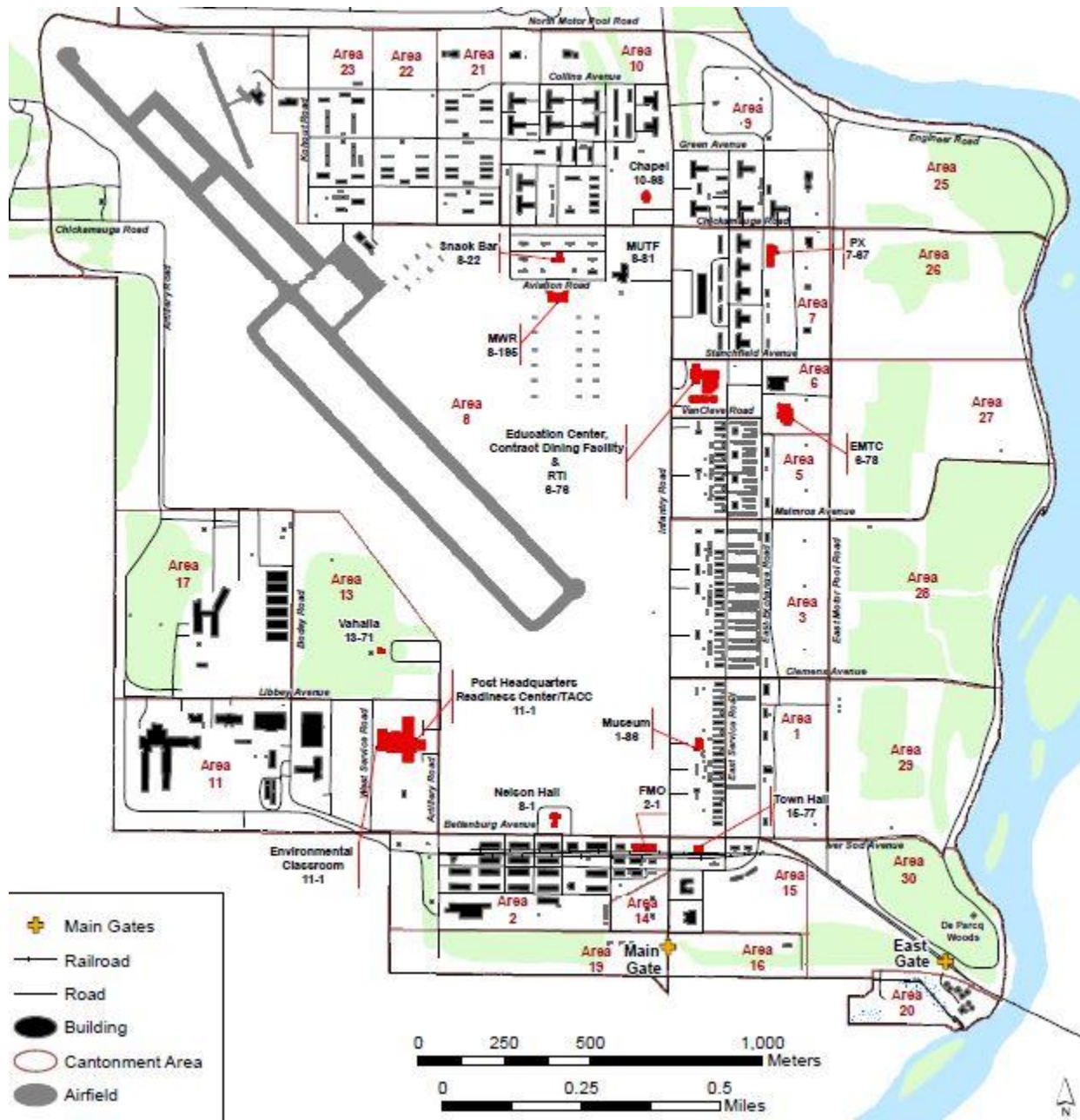
### **Saturday:**

6:30am-7:30am	Breakfast (troops provide and prepare their own meal)
7:00am-10:30pm	Scout Shop Hours (Closed During Stage Show) Bldg. 22-26
7:00am-10:30pm	Trading Post/Concessions Hours (Closed During Stage Show) Bldg. 22-27
8:00am (leaves)	Group 1 Busing for morning Extreme loads at Collins Avenue
8:30am (leaves)	Group 1 Busing for morning Adventure loads at Collins Avenue
8:30am-11:30am	Extreme & Adventure Group 1 session-
9:00am-12:00pm	Midway open
10:00am-11:30am	Group 2 Extreme & Adventure pick up lunches @ bldg. _____ TBD
12:00am-1:30pm	Group 1 Extreme & Adventure pick up lunch @ bldg. _____ TBD
12:00pm (leaves)	Group 2 Departure for afternoon Extreme loads at Collins Avenue
12:30pm (leaves)	Group 2 Departure for afternoon Adventure loads at Collins Avenue
1:00-4:00pm	Midway Action Center open
1:00pm-4:00pm	Extreme & Adventure Group 2 session
4:30pm-6:30pm	Dinner Meal (troops provide and prepare their own meal)
7:00pm-9:30pm	Stage Show starts – Next to the Hangar
9:30pm	Key announcements followed by Fireworks show
10:30pm	Lights out

### **Sunday:**

6:00am	Commissioners Coffee @ Hangar/MWR bldg. 8-195
6:00am-6:30am	Wake up & personal hygiene
7:00am-10:00am	Trading Post/Concession Hours – Bldg. 22-27
6:30am-8:00 a.m.	Breakfast (troops provide and prepare their own meal)
8:00am-9:00am	Catholic Religious Service at the Chapel Bldg. 10-98
8:00am-9:00am	Non-Denominational Religious Service at the Hangar/MWR Bldg. 8-195
9:00am-11:00am	Unit Good Turn/Unit Check-Out receive patches, & travel safely home

# Cantonment Map



## Emergency Phone Numbers

**Emergency Medical, Please DO NOT use 911!**

- **Headquarters Building 21-1 call: 320-616-7221**
- **A staffed 24-hour First Aid in Building 23-1 call: 320-616-7222**
- **Camp Ripley Camping Area Emergency: 320-632-7375**
- **Camp Ripley Range Emergency: 320-616-3137**