

2026 Konza District Spring Camporee

“KONZAVOUS”



March 27-29, 2026
RVML Camp, Wakefield, KS

The Republican Valley Muzzleloaders are hosting the 2026 District Spring Camporee. The RVML is a group of individuals dedicated to providing the best possible experience of portraying (re-enacting) the fur-trapping era or the lives of mountain men (and women). The Camp is located at their campground, Cedar Cove, 3 miles west of Wakefield (See [map](#)). The campout will be held in the Rendezvous style; therefore, the name “Konzavous” will be used. Similar to the Trappers Rendezvous, but without flea-market trading. Fun and learning go hand in hand for the enjoyment of Scouts and Leaders alike.

About the campground: The campground is a mature cedar tree grove with roads and campsites cleared out. The campsites can be rather cozy, so units must be careful of tent spacing. All campsites will be assigned based on unit registration; some units may have to use multiple sites. When that happens, we will make sure you have sites side by side. This will be an excellent opportunity to utilize the Patrol Method.

Event Fee:	Scouts BSA youth	\$30 until March 13, 11:59 pm
	All Adults	\$20 until March 13, 11:59 pm
	Registrations after March 12 th add \$5 more	

Registration closes Wednesday, March 20, 11:59 pm.

Check-in: Check-in will start at 6 pm on Friday, March 27th. Units must confirm everyone on site. Medical forms Part A & B must be brought for all attendees and will be turned in to the camp medical officer. Health forms will be returned to the unit leader upon check-out. [Scout Participation and Hold-Harmless Agreement Forms](#) must be provided for all attendees participating in the rifle-shooting event. Forms not picked up will be shredded at the Konza District office on the first business day following the event. **Please inform event leadership beforehand if you have Scouts or leaders with food allergies.**

Parking: Due to the limited space in the camping area, **all vehicles will be parked in the main parking area (See Aerial Map)**. When units arrive, the vehicle pulling the trailer can drive to their site, unload, and return to the parking area. **This is the only vehicle allowed at the campsite.** All Scouts and leaders must walk unless they are in the trailing vehicle. **Please note:** the trails are not large enough for buses to maneuver. In the event of rain or muddy roads, **NO** vehicles will be allowed on camp roads north of the main entrance. Please plan accordingly. Watch and follow all posted signs throughout the area.

Meals: There will be a camp-wide dinner on Saturday night with the meat and sides provided. We ask each unit to bring at least 1 dessert to share for every 8 people. This can be cooked in camp or brought from home. **IF YOU COOK IN CAMP, PLEASE MARK YOUR VESSEL.** Units will be responsible for all other meals. Units will need to provide their own firewood for the weekend. Due to the amount and density of cedar trees, please try not to bring hedge (bois de arc) firewood. Adult assistance with serving dinner is requested.

Visitors: Per BSA policy beginning Sept 1, 2024, Webelos and AOLs are not allowed to visit on Saturday.

Saturday activities: The RVML and its members will provide activities to keep the Scouts busy and engaged. Activities may include Tomahawks, Black powder rifles, Archery, Trapping, and Native American living and folklore. Even though this is Rendezvous-themed, there will NOT be a trading area. Please do not allow your scouts to bring trade goods. **Personal firearms, archery equipment, and tomahawks on the ranges are NOT PERMITTED.** The Friday night leader's meeting will provide a map of activity locations. Units will be assigned a rotation schedule to visit the activities throughout the day. (See [Aerial Map](#) and [Activities Matrix](#) at the end of this guide.)

Mountain Man Campsites: Youth are welcome to visit the different Mountain Man campsites, as many activities are available. However, youth are NOT permitted to enter any tent and must ask permission to enter the campsite before entry. If a "bucksinner" or "trapper" is not present, please refrain from entering the site.

RVML Venture Crew: Formation of a Fur Trade Venture Crew has been discussed. If you or any of your Scouts are interested in joining and learning more about the fur trade-era reenactment, please get in touch with David at the office.

RANGES RULES

- 1. DO NOT walk in or through the various ranges (rifle, archery, hawk, and knife) when the range is open UNLESS you are part of the group there to participate.**
- 2. LISTEN to the Safety Briefing and the range instructor.**
- 3. When handling the black powder (muzzleloading) rifles, remember the 3 Rules of Gun Safety:**
 - a. Always keep your gun pointed in a safe direction (downrange or at the ground).**
 - b. Always keep your finger off the trigger until ready to shoot.**
 - c. Always keep your gun unloaded until ready to shoot.**
- 4. Wear Eye and Ear protection before entering the loading/unloading area.**

Schedule of Events (Subject to Change)

Friday, March 27th

6:00 – 9:00 pm - Registration check-in starts. [Please follow instructions from RVML members and use [Location Map](#).]

Camp set up after check-in.

9:30 pm - Scoutmaster, SPL and Chaplain's Aide Cracker Barrel – Central Camp pavilion (yellow circle)

Saturday, March 28th

Until 8:00 am – Unit time

8:00 am – Opening Flags

8:05 am - Shooting Sports Safety Briefing/Assignment of Session Groups A - H

9:00 am – 12 pm – Activities (See [Activity Session Matrix](#))

12n – 1:00 pm – Lunch at unit campsite

1:00 pm – 4:00 pm – Activity sessions continue (See [Matrix](#))

4:00 – 6:00 pm – Cooking/Unit Time

6:00 pm – Closing Flags

6:10 – 7:30 pm – Dinner

10 pm – Lights-out, quiet time

Sunday, March 29rd

Until 9 am – Unit time

9:00 am – Unit check out

Please check the lost and found before you depart

Activity Session Matrix – (Subject to change)

Time Slot	BP Rifle	Archery	Native Living	Native Stories	MM Trapping/Living	MM Transportation	Period Music
9:00 - 9:45	Group A	Group B	Group C	Group D	Group E	Group F	Group G
9:45 - 10:30	Group G	Group A	Group B	Group C	Group D	Group E	Group F
10:30 - 11:15	Group F	Group G	Group A	Group B	Group C	Group D	Group E
11:15 - 12:00	Group E	Group F	Group G	Group A	Group B	Group C	Group D
12:00 - 1:00	LUNCH	LUNCH	LUNCH	LUNCH	LUNCH	LUNCH	LUNCH
1:00 - 1:45	Group D	Group E	Group F	Group G	Group A	Group B	Group C
1:45 - 2:30	Group C	Group D	Group E	Group F	Group G	Group A	Group B
2:30 - 3:15	Group B	Group C	Group D	Group E	Group F	Group G	Group A
3:15 - 4:00	OPEN RANGE - Rifle and Archery open for those who didn't shoot during their slot						

Station	Presenter(s)	Location
BP Rifle	RVML NRA-BP Instr.	Green Rectangle
Archery	Doug/Frank	Pink Line
Native Living	PantherHeart, Buzz, Moose	White "Tipi"
Native Stories	Verleta	White Circle
MM Trapping/Living	Bullit, Nestor	Lt. Blue Circle
MM Transportation	Ed Lindsey	Lt. Blue Circle
Period Music	Wade Davis	Lt. Blue Circle

NOTES:

- Each group consists of 9-15 scouts
- Multiple Troops can combine to equal the number needed per group
- Traffic and parking are indicated on the map in red
- Only 1 truck/trailer to site; pack'n/hike from parking lot
- Please stay on developed paths

TROOP ASSIGNMENT LEGEND

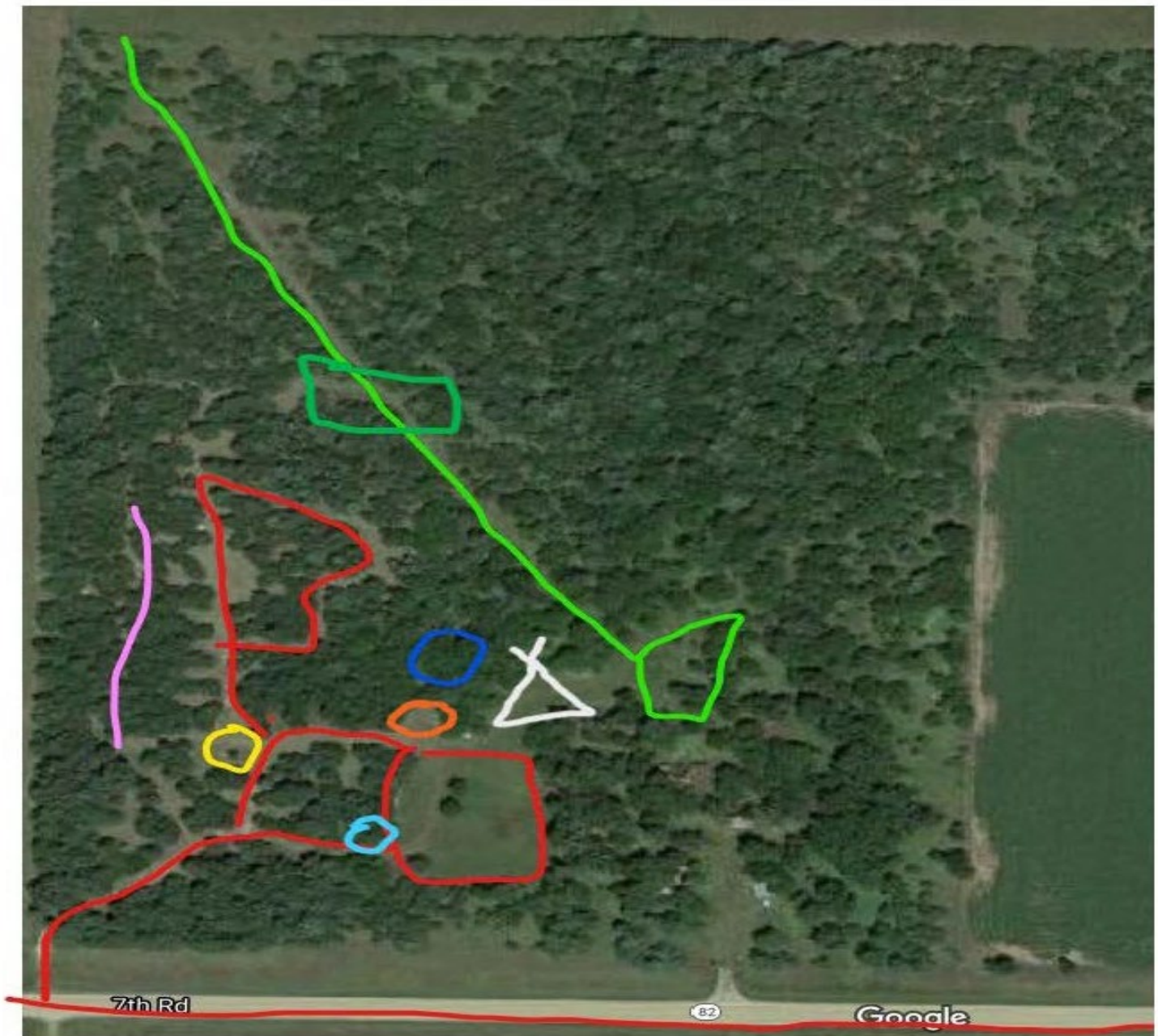
Troop #	Group	Scout Count
1	C	10
32	A	3
38	B	4
40	B	12
41	A	12
60	D	7
66	G	8
79	D	5
86	F	5
254	C	4
264	G	5
284	E & F	26

GROUP SUMMARY

Group	Troops Included	Total Scouts
Group A	Troop 41, Troop 32	15
Group B	Troop 40, Troop 38	16
Group C	Troop 1, Troop 254	14
Group D	Troop 60, Troop 79	12
Group E	Troop 284 (Part 1)	15
Group F	Troop 284 (Part 2), Troop 86	16
Group G	Troop 66, Troop 264	13
TOTAL		101

NOTE: Troop 284 (26 scouts) was split between Groups E and F to maintain balanced group sizes.

RVML Aerial Map



Legend

RED – Driving/vehicle path. Parking is the red square to the east.

[NOTE: the “B” on the north side of the camping area is one-way, north to south, starting at the hairpin turn.]

YELLOW CIRCLE – Central camp/fire.

PINK LINE – Archery range.

DARK BLUE CIRCLE – ‘Hawk and Knife Range.

LIGHT BLUE CIRCLE – American Mountain Men

GREEN LINE – Range Road. Rifle Range notated w/ DARK green rectangle

ORANGE CIRCLE – Native Americans

WHITE TEEPEE – Native American Living

Scouting Participation and Hold-Harmless Agreement

Konza District, Coronado Area Council, is conducting range and target activities program. Scouts will be instructed in how to handle, maintain, and safely shoot a muzzle-loading rifle, and will be provided instruction to improve their shooting skills. Scouts will receive classroom instruction and range instruction, during which they will fire a rifle under the supervision of a trained NRA Range Safety Officer and an NRA-certified Rifle Instructor.

Scouts will be required to always wear eye and hearing protection while on the range. Scouts are expected to abide by all safety rules and the instructions of the Range Safety Officer(s) and Rifle Instructor(s).

I, the undersigned, give my child, _____, permission to participate in this program. I understand that participation in the activity involves a certain degree of risk.

I have carefully considered the risk involved and have given consent for my child to participate in the activity. I understand that participation in the activity is entirely voluntary and requires participants to abide by the rules and standards of conduct. I release the Boy Scouts of America, the local council, the activity coordinators, and all employees, volunteers, related parties, or other organizations associated with the activity from all claims or liability arising out of this participation.

For safety, my child and I agree that he/she will do the following or he/she will be removed from the program. I understand that any additional cost associated with participation in this program will not be refunded if my child is removed due to behavioral problems.

1. Complete the training offered as part of the program.
2. Wear all safety gear always while on the range.
3. Follow all safety rules provided in the training class.
4. Follow the instructions of the NRA Range Safety Officer(s) and Rifle Instructor(s).
5. Do not handle any Rifles until instructed to do so by the NRA Rifle Instructor(s).
6. Follow the instructions of the NRA Range Safety Officer(s) always.
7. Is a registered Scouts BSA member, Venturer, or Sea Scout

Participant signature: _____ Date: _____

Parent/guardian signature: _____ Date: _____

Parent/guardian printed name: _____ Date: _____

Home phone: _____ Cell phone: _____