



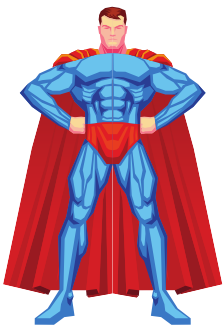
CAMP C.S. KLAUS

2025 CUB SCOUT LEADER & PARENT GUIDE



2025 CUB CAMP SESSIONS & FEES

CUB SCOUT DAY CAMP
 June 14, 2025
 @ Camp CS Klaus
 \$50 by May 15, 2025
 \$60 after May 15, 2025
 must be accompanied
 by an adult



NEW **CUB SCOUT ADVENTURE**
 @ Camp C.S. Klaus
 3 Days/2 Nights
 June 19-21, 2025
 \$145 by May 15, 2025
 \$165 after May 15, 2025
 \$60 for adults



NEW **WEBELOS & ARROW OF LIGHT CAMP**
 @ Camp C.S. Klaus
 4 Days/3 Nights
 June 15-18, 2025
 \$180 by May 15, 2025
 \$200 after May 15, 2025
 \$85 for adults

CUB OVERNIGHT
 @ Camp C.S. Klaus
 2 Days/1 Night
 July 12-13
 \$120 by May 15, 2025
 \$140 after May 15, 2025
 (1 adult included in price)



CANCELLATIONS

If it is necessary for a family to cancel a reservation a refund request can be reviewed by the council's camping committee. A refund request form must be filled out and submitted to the Council Service Center no later than August 30, 2025. If instances of illness or death in the family make it impractical for the Scout to attend Camp Klaus, a partial fee may be refunded. **Fees are not refundable for homesickness.**



Scouting America

Northeast Iowa Council



Mailing Address:
P.O. Box 732
Dubuque, IA 52004-0732
www.scoutsiowa.org

Physical Address:
10601 Military Rd
Dubuque, IA 52003
Phone: (563) 556-4343

CAMP C.S. KLAUS

28157 Horseshoe Rd
Greeley, IA 52050

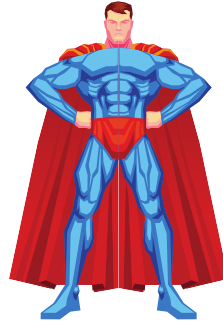
Emergency Phone
563.856.3845

CUB SCOUT DAY CAMP

June 14, 2025 @ Camp C.S. Klaus

SCHEDULE

8:30am - Check-In
4:30pm - Check-Out



PROGRAM ACTIVITIES

Archery, BB, Slingshot, Climbing Tower, and much more!

FEES & REGISTRATION

The cost of this camp is \$50 per youth and adult partner if registered by May 15. After May 15, 2025 the price is \$60 per youth and adult partner. Registration is limited to the first 100 youth/adult pairs that sign up. Each Scout will receive a patch for attending.

WHO SHOULD ATTEND?

This summer camp experience is open to any youth entering 1st grade through 5th grade, but is designed primarily for younger youth.

PARENT-TO-CHILD RATIO

Each youth must be accompanied by a parent or guardian. In most cases, this will be a parent or direct relative of the child. In some special cases, it may be a friend of the family or another well-trusted adult. For families with more than one child, it is permissible for one parent to bring multiple children. It is not, however, permissible for one parent to bring multiple children from different families.

DAY CAMP PACKING LIST - SEE PAGE 13 FOR DRESS CODE

Personal Items

- Swimwear and towel
- Sunscreen
- Insect Repellant
- Water Bottle
- Sack Lunch

Very Important

- Signed and completed BSA Medical Form (Parts A & B)

Prescription Medications

CUB OVERNIGHT - 2 DAYS / 1 NIGHT



July 12-13, 2025 @ Camp C.S. Klaus

Check-In: Saturday @ 10:00am

Check-Out: Sunday @ 9:00am

FEES & REGISTRATION

The cost of this camp is \$120.00 per Cub Scout and parent/guardian if paid before May 15, 2025.

After May 15, 2025 the price is \$140.00 per Cub Scout and parent/guardian. Additional adults are \$50.00 per person. Registration is limited to the first 100 Scout/adult pairs that sign up per weekend. Each Scout will receive a patch for attending. Patches will also be available for purchase by adults in attendance.

WHO SHOULD ATTEND?

This summer camp experience is open to any Cub Scout entering 1st grade through 5th grade, but is designed primarily for younger Cubs. For Scouts entering 4th and 5th grade, we recommend the Webelos & Arrow of Light Adventure (see page 9).

PARENT-TO-CHILD RATIO

For this overnight camp, each Scout must be accompanied by a parent or guardian. In most cases, this will be a parent or direct relative of the child. In some special cases, it may be a friend of the family or another well-trusted adult. If the adult is not a parent or legal guardian of the child, they may not share a tent with the child. For families with more than one child in Scouting, it is permissible for one parent to bring multiple children. It is not, however, permissible for one parent to bring multiple children from different families.

CHECK-IN

Parents, be advised! Check-in happens at 10:00am, and our campsites leave as groups. If you arrive after 11:00am, your site may have left already, and you may need to tour with another campsite.

DINING

All meals in the Dining Hall are served buffet style. Please inform the Council Service Center of any dietary restrictions when registering online.

Meals may offer assorted fresh fruit, juice, milk, water, and/or tea. Coffee will be available for adults. The following may also be available bread, butter, jelly, peanut butter, and condiments.

Salad Bar may include: Lettuce, Diced Onion, Tomato, Green Pepper, Croutons, Bacon Bits, and Salad Dressing.

CUB OVERNIGHT PACKING LIST - SEE PAGE 13 FOR DRESS CODE

Very Important

- **Signed and completed BSA Medical Form (Parts A & B) for youth and adults**
- **Prescription Medications**

Clothing Items

- Scout Field Uniform (Class A)
- 1-2 Pairs of Socks
- Sweatshirt or Jacket
- Swimwear and Towel
- Rain Gear
- 1-2 Pairs of Underwear
- 1-2 T-Shirts
- Hiking Boots/Gym Shoes
- 1-2 Pairs of Shorts
- Rugged Jeans or Pants

Camping Gear

- Day Pack to Carry
- Water Bottle
- Sleeping Bag
- Pack or Duffel Bag
- Dirty Clothes Bag
- Bedroll (if desired)

Personal Items

- Toothbrush & Toothpaste
- Comb/Brush
- Soap
- Bath Towel & Wash Cloth
- Deodorant

Camp Necessities

- Flashlight/Lantern
- Sunscreen
- Bug Spray
- Clothesline with pins
- Pocket Knife(3rd grade +)
- Personal First Aid Kit
- Fishing Gear
- Spending Money

Take Note:

Electronics are prohibited for Scouts during program and we cannot guarantee adult access to wi-fi.

CUB OVERNIGHT TENTATIVE SCHEDULE

Friday, June 20, 2025



10:00am - 11:30am	Camp Check-in and Tours
11:45am	Meet in front of Munter for opening flags and announcements (in uniform)
12:00pm - 1:00pm	Lunch
1:00pm - 5:30pm	Program areas open
5:45pm	Meet in front of Munter Lodge (in uniform)
6:00pm-7:00pm	Dinner
7:15pm - 8:30pm	Evening Flag Ceremony in Parade Grounds and Campfire Program (in uniform)
8:30pm - 10:00pm	Free time in campsites, shower time, and lights out

Saturday, June 21, 2025

7:00am - 7:30am	Pack up and leave items by campsite flag pole to be driven to parade grounds
7:30am	Meet in front of Munter for Morning Flag Ceremony (in uniform)
7:45am - 8:30am	Breakfast
8:30am - 9:00am	Make sure campsites are clean and all garbage is set by the campsite flag pole & departure

CUB OVERNIGHT PROGRAM SCHEDULE

Saturday Program Schedule	1:00	2:30	4:00
AQUATICS / LAKE JOHN DEERE	Swimming Adventures All Ranks	Swimming Adventures All Ranks	Open Swim
DICK HELLER CLIMBING TOWER	Open Climb	Open Climb	Open Climb
ECOLOGY / NATURE CENTER	Hiking All Ranks	Fishing All Ranks	Open Program
FIELD SPORTS / ARCHERY RANGE	Archery All Ranks	Archery All Ranks	Archery All Ranks
FIELD SPORTS / BB RANGE	BB All Ranks	BB All Ranks	BB All Ranks
HANDICRAFT	STEM: Science & Art All Ranks	STEM: Technology All Ranks	Open Program
SCOUTCRAFT	Let's Camp Tiger through Webelos	STEM: Engineering All Ranks	Knots Pioneering, etc.
OWL'S ROOST	Champions for Nature Tiger through Wolf	Champions for Nature Bear through AOL	Conservation Project All Ranks
VISITOR CENTER BASEMENT	Race Time All Ranks	STEM: Math All Ranks	Program Area Closed

CUB OVERNIGHT TENTATIVE PROGRAMS



TIGER ADVENTURES

Archery
 BB
 Tigers in the Water
 Tigers in the Wild
 Fish On
 Sky is the Limit
 Technology All Around
 Let's Camp
 Designed by Tiger
 Champions for Nature
 Race Time
 Stories in Shapes

WOLF ADVENTURES

Archery
 BB
 Paws for Water
 Paws on the Path
 A Wolf Goes Fishing
 Digging in the Past
 Computing Wolves
 Let's Camp
 Air of the Wolf
 Champions for Nature
 Race Time
 Code of the Wolf

BEAR ADVENTURES

Archery
 BB
 Salmon Run
 Bear Habitat
 A Bear Goes Fishing
 Forensics
 Chef Tech
 Let's Camp
 Baloo the Builder
 Champions for Nature
 Race Time
 Balancing Bears

WEBELOS ADVENTURES

Aquanaut
 Archery
 BB
 Webelos Walkabout
 Catch the Big One
 Art Explosion
 Tech on the Trail
 Let's Camp
 Build It
 Champions for Nature
 Race Time
 Math on the Trail

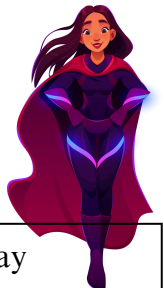
ARROW OF LIGHT ADVENTURES

Archery
 BB
 Swimming
 Outdoor Adventurer
 Fishing
 High Tech Outdoors
 Engineer
 Champions for Nature
 Race Time
 Estimations

Please see Individual Rank Handbooks for a complete set of requirements. Scouts may not be able to complete the entire adventure listed above.

Programs will be offered in 90-minute blocks. Scouts need to be on-time to participate in the activities offered unless it is listed as open on the schedule.

CUB OVERNIGHT MENU - SUBJECT TO CHANGE-



Lunch Saturday	Dinner Saturday	Breakfast Sunday
Chicken Nuggets Tater Tots Corn Peaches Bar/Cookie	Goulash Garlic Bread Carrots Ice Cream	French Toast Sticks Sausage Cold Cereal Oatmeal

CUB SCOUT ADVENTURE- 3 DAYS / 2 NIGHTS



DATES AND TIMES

June 19-21, 2025 @ Camp C.S. Klaus

Check-In: Thursday @ 1:00pm

Check-Out: Saturday @ 3:00pm

FEES & REGISTRATION

The cost of this camp is \$145.00 per Cub Scout if paid before May 15, 2025. After May 15, 2025 the price is \$165.00 per Cub Scout. Adults registration is \$60.00 per adult. Registration is limited to 200 total campers, including both youth and adults, and is taken on a first-come, first-serve basis. Each camper (both youth and adult) in attendance will receive a patch.

WHO SHOULD ATTEND?

This summer camp experience is open to any Cub Scout entering 1st grade through 5th grade, but is designed primarily for older Cubs entering 2nd and 3rd grade. For Scouts entering 4th and 5th grade, we recommend the Webelos & Arrow of Light Adventure (see page 9).

PARENT-TO-CHILD RATIO

For this three day/two night camp, each Scout must be accompanied by a parent or guardian. In most cases, this will be a parent or direct relative of the child. In some special cases, it may be a friend of the family or another well-trusted adult. If the adult is not a parent or legal guardian of the child, they may not share a tent with the child. For families with more than one child in Scouting, it is permissible for one parent to bring multiple children. It is not, however, permissible for one parent to bring multiple children from different families.

CHECK-IN

Parents, be advised! Check-in happens at 1:00pm, and our campsites leave as groups. If you arrive after 2:00pm, your site may have left already, and you may need to tour with another campsite. Swim checks start at 3:30pm.

DINING

All Meals in the Dining Hall are served buffet style. Please inform the Council Service Center of any dietary restrictions when registering online.

Meals may offer assorted fresh fruit, juice, milk, water, and/or tea. Coffee will be available for adults.

The following may also be available bread, butter, jelly, peanut butter, and condiments.

Salad Bar may include: Lettuce, Diced Onion, Tomato, Green Pepper, Croutons, Bacon Bits, Ranch, French or Vinaigrette dressings.

CUB CAMP PACKING LIST - SEE PAGE 13 FOR DRESS CODE

Very Important

- **Signed and completed BSA Medical Form (Parts A & B) for youth and adults**
- **Prescription Medications**

Clothing Items

- Scout Field Uniform (Class A)
- 3-4 Pairs of Socks
- Sweatshirt or Jacket
- Swimwear and Towel
- Rain Gear
- 3-4 Pairs of Underwear
- 3-4 T-Shirts
- Hiking Boots/Gym Shoes
- 3-4 Pairs of Shorts
- Rugged Jeans or Pants

Camping Gear

- Day Pack to Carry
- Water Bottle
- Sleeping Bag
- Pack or Duffel Bag
- Dirty Clothes Bag
- Bedroll (if desired)

Personal Items

- Toothbrush & Toothpaste
- Comb/Brush
- Soap
- Bath Towel & Wash Cloth
- Deodorant

Camp Necessities

- Flashlight/Lantern
- Sunscreen
- Bug Spray
- Clothesline with pins
- Pocket Knife(3rd grade +)
- Personal First Aid Kit
- Fishing Gear
- Spending Money

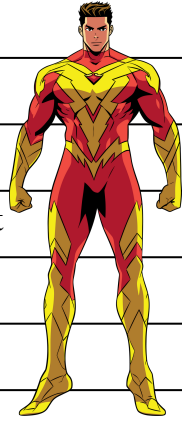
Take Note:

Electronics are prohibited for Scouts during program and we cannot guarantee adult access to wi-fi.

CUB SCOUT ADVENTURE TENTATIVE SCHEDULE

Thursday, June 19, 2025

1:00pm - 3:00pm	Check-in & Camp Tours
3:00pm	Opening Flag Ceremony at Parade Grounds and announcements (in uniform)
3:30pm - 5:30pm	Swim Checks, settle in a campsite, open climb, open shoot, visit the Trading Post
5:45pm	Meet in front of Munter in Field Uniform
6:00pm - 7:00pm	Dinner
7:30pm	Evening Flag Ceremony in Parade Grounds and Campfire Program (in uniform)
8:30pm - 10:00pm	Free time in campsites, shower time, and lights out



Friday, June 20, 2025

8:00am	Meet in front of Munter for Morning Flag Ceremony (in uniform)
8:15am - 9:15am	Breakfast
9:30am - 12:30pm	Program areas open
12:45pm	Meet in front of Munter for announcements
12:45pm - 2:00pm	Lunch & Break
2:00pm - 5:00pm	Program areas open
5:15pm	Meet in front of Munter in Field Uniform
5:30pm - 6:30pm	Dinner
6:30pm - 7:30pm	Skit practice for campfire program led by the campers
7:30pm - 8:30pm	Evening Flag Ceremony in Parade Grounds and Campfire Program (in uniform)
8:30pm - 10:00pm	Free time in campsites, shower time, and lights out

Saturday, June 21, 2025

7:00am - 8:00am	Pack up and leave items by campsite flag pole to be driven to parade grounds
8:15am	Meet in front of Munter for Morning Flag Ceremony (in uniform)
8:30am - 9:30am	Breakfast
9:30am - 12:30pm	Program areas open
12:30pm	Meet in front of Munter for announcements
12:45pm - 1:45pm	Lunch
1:45pm - 2:30pm	Make sure campsites are clean and all garbage is set by the campsite flag pole
2:30pm - 3:00pm	Closing Flag Ceremony in Parade Grounds (in uniform), pack cars, & depart

CUB SCOUT ADVENTURE PROGRAM - SUBJECT TO CHANGE-



Friday & Saturday AM Program Schedule	9:30	11:00	12:30	2:00	3:30
AQUATICS / LAKE JOHN DEERE	Paddle Craft Adventures: All Ranks	Swimming Adventures: All Ranks		OPEN SWIM	
DICK HELLER CLIMBING TOWER	Low COPE	Open Climb		OPEN CLIMB	
ECOLOGY / NATURE CENTER	Hiking: All Ranks	Fishing: All Ranks		Animals Everywhere	TBA
FIELD SPORTS / ARCHERY RANGE	Archery: All Ranks	Archery: All Ranks		Archery: All Ranks	OPEN RANGE
FIELD SPORTS / BB RANGE	BB: All Ranks	BB: All Ranks		BB: All Ranks	OPEN RANGE
HANDICRAFT	STEM: Science & Art	STEM: Technology		Learn About Leatherwork	Whittling Bears-AOL
SCOUTCRAFT	Let's Camp: All Ranks	STEM: Engineering		Knots, Pioneering, etc.	Orienteering
OWL'S ROOST	Champions for Nature: Tiger-Webelos	Champions for Nature: Arrow Of Light		Champions for Nature Conservation Project: All Ranks	
VISITOR CENTER BASEMENT	Race Time: All Ranks	STEM: Math			



CUB ADVENTURE MENU - SUBJECT TO CHANGE-

	Sunday	Monday	Tuesday
Breakfast		French Toast Bacon Cold Cereal Hot Cereal Fruit Juice Milk	Scrambled Eggs & Ham Cold Cereal Hot Cereal Muffin Juice Milk
Lunch		Sloppy Joe's Bread Chips Apples	Chicken Patties French Fries Corn Relishes Apple Dessert
Supper	Chicken Nuggets Tator Tots Carrots Relishes Peaches Bar	Burger/Brat Pasta Salad Coleslaw Baked Beans Chips Cake	

WEBELOS/AOL CAMP - 4 DAYS / 3 NIGHTS



DATES AND TIMES

June 15-18, 2025 @ Camp C.S. Klaus

Check-In: Sunday @ 1:00pm

Check-Out: Wednesday @ 11:00am

FEES & REGISTRATION

The cost of this camp is \$180.00 per Cub Scout if paid before May 15, 2025. After May 15, 2025 the price is \$200.00 per Cub Scout. Adults registration is \$85.00 per adult. Registration is limited to 200 total campers, including both youth and adults, and is taken on a first-come, first-serve basis. Each camper (both youth and adult) in attendance will receive a patch.

WHO SHOULD ATTEND?

This summer camp experience is open to Cub Scout entering 4th or 5th grade.

LEADER/PARENT-TO-CHILD RATIO

For this four-day, three-night camp, each pack must provide at least two registered adult leaders with current Youth Protection Training and maintain a 1:4 Leader to Scout ratio. Packs must work this out as families are sending in registrations – we will not keep track of whether packs are satisfying this ratio at the Council Service Center. If children show up without the minimum number of leaders, they may be sent home. Packs are always encouraged to send more than the minimum number of leaders. Or a Scout may attend one-on-one with their parent/guardian. If the adult is not a parent or legal guardian of the child, they may not share a tent with the child.

CHECK-IN

Please be advised! Check-in begins at 1:00pm, and our campsites leave as groups. If you arrive after 2:00pm, your site may have left already, and you may need to tour with another campsite. Swim checks start at 3:00pm.

DINING

All meals in the Dining Hall are served buffet style. Please inform the Council Service Center of any dietary restrictions when registering online.

Meals may offer assorted fresh fruit, juice, milk, water, and/or tea. Coffee will be available for adults.

The following may also be available bread, butter, jelly, peanut butter, and condiments.

Salad Bar may include: Lettuce, Diced Onion, Tomato, Green Pepper, Croutons, Bacon Bits, Ranch, French or Vinaigrette dressings.

WEBELOS/ARROW OF LIGHT PACKING LIST - SEE PAGE 13 FOR DRESS CODE

Very Important

- Signed and completed BSA Medical Form (Parts A & B) for youth and adults
- Prescription Medications

Clothing Items

- Scout Field Uniform(Class A)
- 4-5 Pairs of Socks
- Sweatshirt or Jacket
- Swimwear and Towel
- Rain Gear
- 4-5 Pairs of Underwear
- 4-5 T-Shirts
- Hiking Boots/Gym Shoes
- 4-5 Pairs of Shorts
- Rugged Jeans or Pants

Camping Gear

- Day Pack to Carry
- Water Bottle
- Sleeping Bag
- Pack or Duffel Bag
- Dirty Clothes Bag
- Bedroll (if desired)

Personal Items

- Toothbrush & Toothpaste
- Comb/Brush
- Soap
- Bath Towel & Wash Cloth
- Deodorant

Camp Necessities

- Flashlight/Lantern
- Sunscreen
- Bug Spray
- Clothesline with pins
- Pocket Knife(3rd grade +)
- Personal First Aid Kit
- Fishing Gear
- Spending Money

Take Note:

Electronics are prohibited for Scouts during program and we cannot guarantee adult access to wi-fi.

WEBELOS/AOL CAMP TENTATIVE SCHEDULE



Sunday, June 15, 2025

1:00pm - 2:30pm	Check-in & Camp Tours
2:30pm	Opening Flag Ceremony at Parade Grounds and announcements (in uniform)
3:00pm - 5:30pm	Swim Checks, settle in campsite, open climb, open shoot, visit the Trading Post, explore camp
5:45pm	Meet in front of Munter in Field Uniform
6:00pm - 7:00pm	Dinner
7:15pm - 8:15pm	Evening Flag Ceremony in Parade Grounds and Campfire Program (in uniform)
8:15pm - 10:00pm	Free time in campsites, shower time, and lights out

Monday, June 16, 2025

8:00am	Meet in front of Munter for Morning Flag Ceremony (in uniform)
8:15am - 9:15am	Breakfast
9:30am - 12:30pm	Program areas open
12:30pm	Meet in front of Munter for announcements
12:45pm - 2:00pm	Lunch & Break
2:00pm - 5:00pm	Program areas open
5:15pm	Meet in front of Munter in Field Uniform
5:30pm - 6:30pm	Dinner
6:30pm - 8:00pm	Games in Parade Grounds
8:00pm	Evening Flag Ceremony in Parade Grounds (in uniform)
8:15pm - 10:00pm	Free time in campsites, shower time, and lights out

Tuesday, June 17, 2025

8:00am	Meet in front of Munter for Morning Flag Ceremony (in uniform)
8:15am - 9:15am	Breakfast
9:30am - 12:30pm	Program areas open
12:30pm	Meet in front of Munter for announcements
12:45pm - 2:00pm	Lunch & Break
2:00pm - 5:00pm	Program areas open
5:15pm	Meet in front of Munter in Field Uniform

WEBELOS/AOL CAMP TENTATIVE SCHEDULE



Tuesday, June 17, 2025 Continued

5:30pm - 6:30pm Dinner

6:30pm - 7:30pm Skit practice for campfire program led by the campers

7:30pm - 8:30pm Evening Flag Ceremony in Parade Grounds and Campfire Program (in uniform)

8:30pm - 10:00pm Free time in campsites, shower time, and lights out

Wednesday, June 18, 2025

7:00am - 8:00am Pack up and leave items by campsite flag pole to be driven to parade grounds

8:15am Meet in front of Munter for Morning Flag Ceremony (in uniform)

8:30am - 9:30am Breakfast

9:30am - 10:15am Make sure campsites are clean and all garbage is set by the campsite flag pole & departure

10:15am - 11:00am Closing Flag Ceremony in Parade Grounds (in uniform), pack cars, & depart

WEBELOS/ARROW OF LIGHT CAMP TENTATIVE MENU



- SUBJECT TO CHANGE -

	Sunday	Monday	Tuesday	Wednesday
Breakfast		Breakfast Burrito Applesauce Toast/Bread Cold & Hot Cereal Fruit Juice Milk	Pancakes Sausage Links Applesauce Cold & Hot Cereal Fruit Juice Milk	Sausage & Egg Patties on Bun Fruit Juice Milk
Lunch		Chicken Nuggets Tator Tots Carrots Relishes Peaches Bar	Walking Taco Taco Meat Taco Chips Relishes Cookie Bar	
Supper	Mac and Cheese Hot Dogs Mixed Fruit Relishes Cookie Bar	Lasagna Mixed Vegetables Cake	Roast Pork Mashed Potatoes Gravy Green Beans Ice Cream	

WEBELOS/AOL CAMP TENTATIVE PROGRAMS



WEBELOS ADVENTURES

Aquanaut*
 Archery
 BB
 Catch the Big One
 Champions for Nature
 Chef's Knife
 Earth Rocks
 Let's Camp
 Math on the Trail
 Paddle Onward*
 Tech on the Trail
 Webelos Walkabout

ARROW OF LIGHT ADVENTURES

Archery
 BB
 Champions for Nature
 Estimations
 Fishing
 High Tech Outdoors
 Into the Wild
 Into the Woods
 Knife Safety
 Paddle Craft*
 Swimming*
 Outdoor Adventurer

*Must take BSA Swim Test on Sunday afternoon, available 3:00pm-5:30pm.
 All adults participating in aquatics activities must also take the BSA Swim Test.

Please see Webelos and Arrow of Light Handbooks for a complete set of requirements.

Programs will be offered in 90-minute blocks. Scouts need to be on-time to participate in the activities offered unless it is listed as open on the schedule.

2025 WEBELOS ARROW OF LIGHT CAMP PROGRAM SCHEDULE - SUBJECT TO CHANGE-



Monday & Tuesday Program Schedule	9:30	11:00	12:30	2:00	3:30	
AQUATICS / LAKE JOHN DEERE	Paddle Onward & Paddle Craft	Aquanaut & Swimming	LUNCH	OPEN SWIM		
DICK HELLER CLIMBING TOWER	Math on the Trail	Estimations		OPEN CLIMB		
ECOLOGY / NATURE CENTER	Into the Wild	Earth Rocks		Into the Woods	Catch the Big One & Fishing	
FIELD SPORTS / ARCHERY RANGE	Slingshot Both Ranks	Archery Both Ranks		Archery Both Ranks	OPEN RANGE	
FIELD SPORTS / BB RANGE	BB Both Ranks	BB Both Ranks		BB Both Ranks	OPEN RANGE	
HANDICRAFT	Chef's Knife	Knife Safety		Learn about Leatherwork	OPEN PROGRAM	
SCOUTCRAFT	Let's Camp	Outdoor Adventurer		Webelos Walkabout	Knots Pioneering, etc.	
OWL'S ROOST	Champions for Nature-AOL	Champions for Nature-Web		CONSERVATION PROJECT		
VISITOR CENTER BASEMENT	Tech on the Trail	High Tech Outdoors				

DRESS CODE



The Northeast Iowa Council encourages all campers to dress comfortably while they are at camp. Campers should use their best judgement to dress appropriately and not wear anything that would make other campers feel uncomfortable. When packing for camp, the following dress code items should be adhered to:

- **Clothing** should not include profanity or images that do not support the Scout Oath and Law
- Proper undergarments should be worn
- **Pants and shorts** must
 - completely cover undergarments
 - not allow for exposure of the buttocks
 - stay up without the use of hands
- **All shirts** must
 - have wide straps or cover the shoulders - no "spaghetti straps"
 - not be see-through or expose the side of the body
 - be worn at all times outside of the aquatics area or shower house
- **Closed-toed shoes** must be worn at all times except while in the aquatics area or shower house. At no time should a camper be barefoot unless in the designated Aquatics areas, the shower or in their tent.

Scouts will be asked to wear the Scout Field Uniform (Class A) to flag lowering, dinner, and at campfires.

Swimwear should be comfortable, functional, and appropriate for the specific aquatic activity. All Swimwear should follow these guidelines:

- clean
- designed as swimwear
- appropriate and safe for the activity
- secure enough to not shift or fall off while participating
- t-shirt or additional layer such as a rash guard may be allowed if it does not hamper movement in the water

For males: swim briefs or swim bottoms short enough to allow exposure are not allowed. Appropriate swimwear may include swim trunks or board shorts.

For females: bikinis or swim wear that allows exposure are not allowed. Appropriate swimwear may include tankinis or one-piece swimsuits.

As always, we remind everyone that Scouting's Barriers to Abuse states, "Appropriate attire is required for all activities". Our policy reflects Scouting America's statement and commitment to diversity, equity, and inclusion and are based on health & safety, dignity, and respect. These guidelines pertain to all ages, genders, and apply to Scouts, Scouters, staff, visitors, and family members.



CAMP C.S. KLAUS DINING

MEALS IN MUNTER LODGE

Camp C.S. Klaus is known for its plentiful and mouthwatering meals. All meals will be served buffet style, at the times found in the schedule. Menus have been carefully planned by our camp cook and have been approved by a registered dietician.

If anyone has special medical dietary restrictions, please notify the Council Service Center when you register for camp so reasonable accommodations may be made. Any Scout with special dietary medical restrictions should also introduce themselves to our camp cook and clarify or confirm any necessary accommodations before the first meal.

CAMP C.S. KLAUS FACILITIES

DAMAGE TO EQUIPMENT

Each campsite will be responsible for equipment provided for their use by the camp. Any damage to equipment because of abuse, whether willful or as a result of negligent or imprudent practices, will be charged to the individual or Pack.

LOST AND FOUND

The camp lost and found box will be located at the Camp Office. Leaders and parents need to remind Scouts to have their personal effects marked with name and pack number. Each Scout needs to take care of, and safeguard, their personal property. Camp is not liable for any lost items.

HEALTH LODGE

A qualified Health Officer is on duty at all times. In the event of serious accident/illness, the person will be taken to a clinic or hospital in Manchester, Iowa. Parents will be informed if the Scout needs extensive care.

SHOWER HOUSES

Each shower stall has its own entrance and is private. Youth must be accompanied by an adult leader or parent to the shower house. Usage of phones or cameras in or near the shower house is strictly prohibited.

MAINTENANCE OF CAMP PROPERTY

The Camp Ranger and council's properties committee will work with the Camp Director to maintain the facilities of Camp Klaus. In the event you discover the need for repairs (i.e. broken board on a tent platform), please report the problem to the Commissioner.

TRASH DISPOSAL

Trash bags are provided to help you keep your campsite clean. Trash bags should be placed next to the campsite sign after evening program if they are to be collected for disposal. **Please do not leave any trash in your campsite at the end of your stay.**

SUPPLIES

The Quartermaster is open each day. Toilet paper, trash bags, and various tools and equipment may be obtained from the Campsite Counselor.

CAMP HOUSING

Camp Klaus provides the following at each campsite: two-person tents on wooden platforms, cots (2 per tent), flagpole, latrine-washstands, picnic tables, and a fire ring. Tent platforms are not to be moved off their foundations! Please remember that all Scouting America Privacy Standards must be followed when it comes to the sharing of tents. A Scout may only share a tent with a parent/guardian or another Scout within 2 years of age.

*No facilities are available for use of personal camper-type vehicles.

*Camping in vehicles in the parking area is prohibited!

FOOD IN CAMPSITES

ALL CAMPERS AND LEADERS ARE ADVISED TO NOT KEEP FOOD IN THEIR TENTS. Wildlife, especially raccoons, are infamous for searching for food wherever it may be found in a campsite, including occupied tents.

TRADING POST

The Camp Klaus Trading Post is stocked with those items necessary to assist Scouts in the successful pursuit of skills and badge work (pocket knives, craft supplies, etc.) as well as snacks, toiletry/personal hygiene items, t-shirts, patches and camping gear. Hours will be posted at the Trading Post. Cash and credit cards accepted.

HEALTH & SAFETY POLICIES

ACCIDENT AND SICKNESS INSURANCE

The Northeast Iowa Council currently provides accident and sickness insurance for campers registered with the Northeast Iowa Council. The insurance is secondary to the camper's primary medical insurance. If they don't have insurance, Scouting America's insurance becomes primary. For all out-of-council campers, insurance is the responsibility of the troop and the Scout's parents unless otherwise covered by their home council. All accidents and illnesses must be reported to the Health Officer and recorded in the Camp Health Log so care can be documented in support of insurance claims. Records will be maintained in the Health Lodge and signed by the staff member in charge of Health and Safety.

ANNUAL HEALTH & MEDICAL RECORD

The Annual Health and Medical Record is required for all Cub Scout activities, with sections A & B completed for youth and adults in attendance. This will be turned in at check-in and can be picked up at check-out. Medical forms are not kept at the Council Service Center and will be destroyed after check-out. The Official Scouting America Annual Health & Medical Record can be found at <https://www.scouting.org/health-and-safety/ahmr/>.

MEDICATION - DOCTOR PRESCRIBED

If a youth camper must take doctor prescribed medicine, written instructions must be included with the Scout's name, medication name, time to be administered, and quantity to be administered. (See pg 14) The Allergies/Medications Consent Section on Part B of Scouting America Annual Health & Medical Record **MUST** be filled out by a parent/guardian and turned in at check-in. Pack Leaders can choose to keep track of prescription & over the counter medications and administration times after talking with the Camp Health Officer. Some Scouts may be able to self-administer medication, especially if they are already doing so at home. The unit must keep medications in a locked container. Otherwise, all prescription medications must be turned into the Health Office for administration. Regardless of which method your Pack decides to use, prescription medications that are controlled substances (i.e. ADHD medications, narcotics, etc) must be kept in the Health Lodge and administered by the Medical Officer. Any medication that needs to be refrigerated will be kept in the Health Lodge. (Note: If a parent is present at camp, they can choose to store and administer the medications to their child with no restrictions including the controlled substances noted above.)

MEDICATION - OVER THE COUNTER/NON-PRESCRIPTION

Several non-prescription medications are available at the Health Office. By signing the Allergies/Medications Consent Section on Part B of the Scouting America Annual Health & Medical Record, you are allowing the Health Medical Officer to dispense any over the counter/non-prescriptions to your Scout at camp.

FEMININE HYGIENE

While Scouts and adults are responsible for their own necessary hygienic supplies, we acknowledge that unexpected situations arise. Campers may expect dispensaries discreetly located in restrooms throughout camp.

PETS

Pets are **NOT** permitted at camp. The only exception is trained and certified service animals. Emotional support animals are not allowed.

DISCIPLINE

The Unit Leaders/parents are responsible for the discipline and order of their own Scouts. The Camp Staff will not assume the responsibility for, or interfere with, unit/parental discipline unless it directly involves the health and safety of youth or the Unit Leaders/parents are not present at the time of the problem. The Camp Director will be apprised of any problem by the staff member and will refer them to the unit leader/parent. No arrangements may be made to send a Scout home before informing the Camp Director of the situation. The Youth Release Form is required for a Scout to leave camp. No initiations or hazing are permitted in camp.

HEALTH & SAFETY POLICIES CONTINUED

OUTDOOR HAZARDS

In any trip to the outdoors the camper may encounter biting insects and poisonous plants or animals. Each parent should familiarize themselves and their youth with poisonous plants and biting insects, especially poison ivy and mosquitos. The effects of poison ivy, ticks, etc., can be minimized with good personal practices. All injuries of this type should be reported to the Camp Health Officer for treatment and recording.

WEATHER EMERGENCIES

In the event of impending severe weather, campers will be notified by program area staff and campsite counselors. The Camp Ranger will drive a vehicle through camp to notify campers. Staff will instruct the camp sites to proceed to the nearest severe weather shelter. There are three concrete weather shelters located on the hill near the campsites, as well as in the basements of Munter Lodge, Visitor Center and Health Lodge.

In the event of sudden, severe weather, the siren will sound continuously. All campers shall take cover immediately in a ditch or other low area. The all clear signal will be a series of on and off siren calls. Everyone should report to the Parade grounds so Campsite Counselors can account for all campers and leaders following the all clear signal.

FIREGUARD PLAN

In case of fire, the Camp Director is to be notified immediately. The Camp Director will contact the Fire Department. All campers are requested to stay clear of the fire area. The Camp Ranger will travel throughout the camp with the vehicle's horn blowing. All Scouts and adults will report to the Parade Ground flagpole area. Leaders should assemble their Scouts in a safe area and take a roll call.

OPEN FLAMES

No open flame is to be used in a campsite with the exception of campfires or cooking fires that are attended while they are burning. Open flames (i.e. candles, sterno, kerosene lanterns, etc.) are strictly prohibited in tents.

FIREARMS, AMMUNITION, BOWS AND ARROWS, SHEATH KNIVES

The camp will have available all bb guns, ammunition, and bows and arrows needed for use as part of the camp program. Personal equipment and ammo is not allowed in camp. Non-folding sheath knives are not allowed by anyone at camp. Absolutely no types of weapons are allowed at camp.

SMOKING, ALCOHOLIC BEVERAGES, ILLEGAL DRUGS

Alcoholic beverages/ illegal drugs /tobacco/vaping of any type will not be tolerated in the council camps. Possession by anyone in attendance will result in immediate dismissal from the camp property. There will be no refund of unused camp fees.

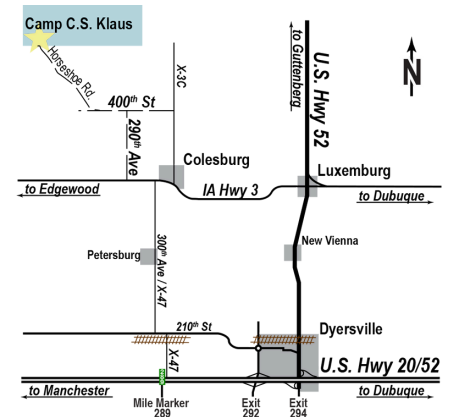
AUTOMOBILE POLICY

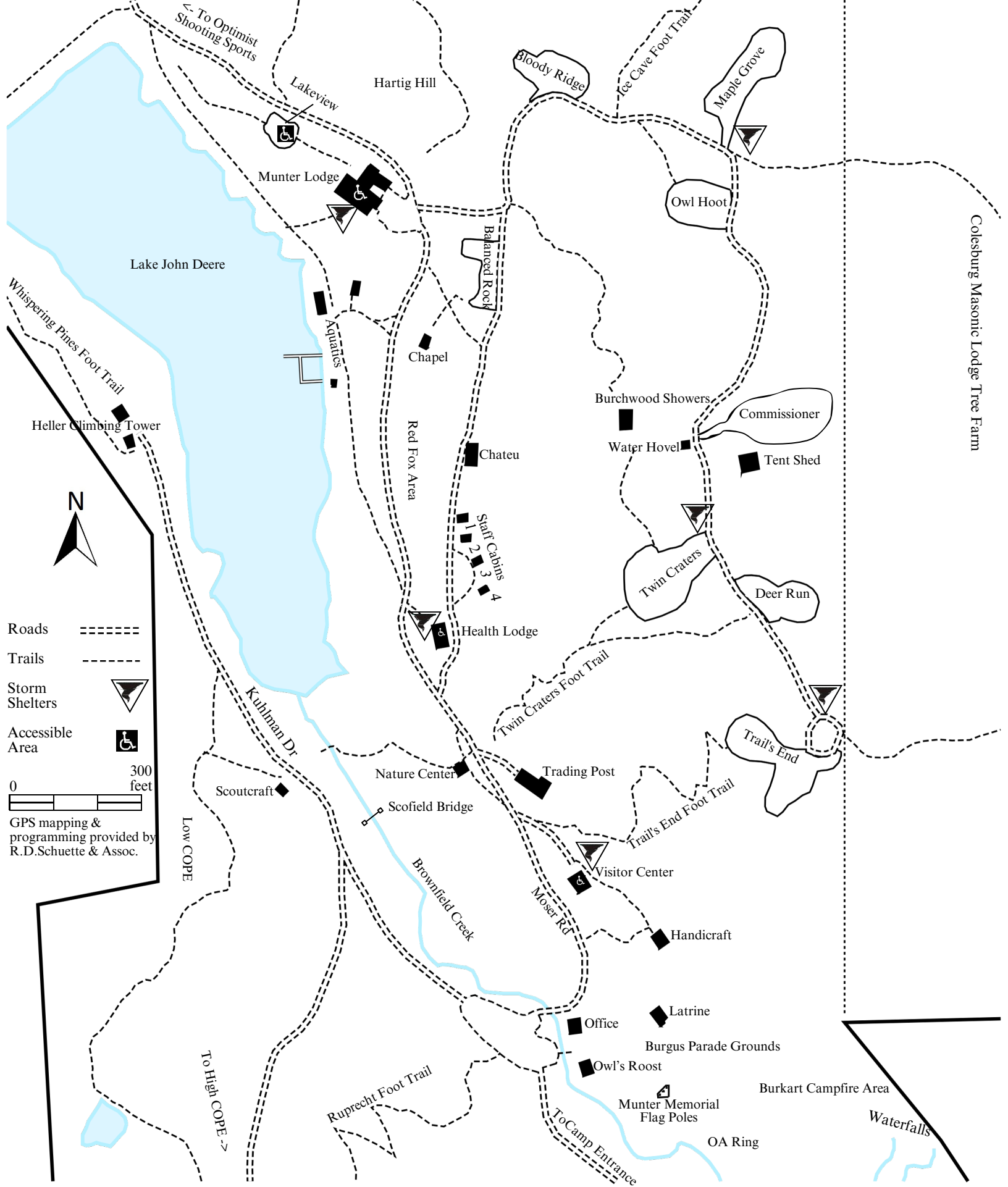
All cars/trucks must be parked and remain in the central parking lot. NO ONE is to ride in the back of a truck. All riders must be in the cab. This includes transportation of Scouts to and/or from camp.

HOW TO GET TO CAMP

GPS ADDRESS: 28157 HORSESHOE RD, GREELEY, IOWA

- One mile west of Colesburg, IA on Hwy. 3, turn north onto 290th Ave (gravel road) and drive 0.9 miles.
- Turn left (west) at the stop sign onto 400th St.
- Drive about 0.7 miles and stay to the right when the road splits. Follow Horseshoe Road for about 0.7 miles to the Camp Klaus Entrance.





Camp C.S. Klaus

Scouting America Northeast Iowa Council

28157 Horseshoe Rd, Greeley, IA 52050

Colesburg Masonic Lodge Tree Farm

Low COPE

To High COPE ->

Moser Rd

Kuhlman Dr

To Camp Entrance ->

To Optimist Shooting Sports

Munter Memorial Flag Poles

Sophia Klaus Picnic Area

Waterfalls

Burkart Campfire Area

OA Ring

Owl's Roost

Burgis Parade Grounds

Office

Latrine

Handicraft

Visitor Center

Trading Post

Nature Center

Scoutcraft

Scofield Bridge

Trail's End

Deer Run

Twin Craters

Tent Shed

Commissioner

Burchwood Showers

Water Hovel

Chateau

Staff Cabins
1
2
3
4

Red Fox Area

Chapel

Aquatics

Balanced Rock

Munter Lodge

Hartig Hill

Lakeview

Bloody Ridge

Ice Cave Foot Trail

Owl Hoot

Maple Grove

Lake John Deere

Whispering Pines Foot Trail

Heller Climbing Tower



Routine Drug Administration Record

Name: _____ Campsite: _____

Troop No.: _____ Date of birth: _____ Classification: _____

Drug hypersensitivity: _____ Weight: _____

P.O. = by mouth
PRN = as needed
A.C. = before meals

I.M. = intramuscular
B.I.D. = two times a day
P.C. = after meals

S.C. = sub-cutaneous
T.I.D. = three times a day
H.S. = hours of sleep (taken at bedtime)

S.L. = sub-lingual-under-tongue
Q.I.D. = four times a day

Prescribing Physician: _____ Medications: _____ Rx: No Yes Number(s): _____ Dosage: _____ Date filled: _____ Route: P.O. I.M. S.C. S.L. Topical Inhalation Rectal Times: PRN Daily B.I.D. T.I.D. Q.I.D. A.C. P.C. H.S. Amount in bottle: _____ Comments: _____	Prescribing Physician: _____ Medications: _____ Rx: No Yes Number(s): _____ Dosage: _____ Date filled: _____ Route: P.O. I.M. S.C. S.L. Topical Inhalation Rectal Times: PRN Daily B.I.D. T.I.D. Q.I.D. A.C. P.C. H.S. Amount in bottle: _____ Comments: _____	Prescribing Physician: _____ Medications: _____ Rx: No Yes Number(s): _____ Dosage: _____ Date filled: _____ Route: P.O. I.M. S.C. S.L. Topical Inhalation Rectal Times: PRN Daily B.I.D. T.I.D. Q.I.D. A.C. P.C. H.S. Amount in bottle: _____ Comments: _____	Prescribing Physician: _____ Medications: _____ Rx: No Yes Number(s): _____ Dosage: _____ Date filled: _____ Route: P.O. I.M. S.C. S.L. Topical Inhalation Rectal Times: PRN Daily B.I.D. T.I.D. Q.I.D. A.C. P.C. H.S. Amount in bottle: _____ Comments: _____																																																																
<table border="1" style="width: 100%; border-collapse: collapse;"> <tr><th>Med</th><th>S</th><th>M</th><th>T</th><th>W</th><th>T</th><th>F</th><th>S</th></tr> <tr><td>Time</td><td></td><td></td><td></td><td></td><td></td><td></td><td></td></tr> </table>	Med	S	M	T	W	T	F	S	Time								<table border="1" style="width: 100%; border-collapse: collapse;"> <tr><th>Med</th><th>S</th><th>M</th><th>T</th><th>W</th><th>T</th><th>F</th><th>S</th></tr> <tr><td>Time</td><td></td><td></td><td></td><td></td><td></td><td></td><td></td></tr> </table>	Med	S	M	T	W	T	F	S	Time								<table border="1" style="width: 100%; border-collapse: collapse;"> <tr><th>Med</th><th>S</th><th>M</th><th>T</th><th>W</th><th>T</th><th>F</th><th>S</th></tr> <tr><td>Time</td><td></td><td></td><td></td><td></td><td></td><td></td><td></td></tr> </table>	Med	S	M	T	W	T	F	S	Time								<table border="1" style="width: 100%; border-collapse: collapse;"> <tr><th>Med</th><th>S</th><th>M</th><th>T</th><th>W</th><th>T</th><th>F</th><th>S</th></tr> <tr><td>Time</td><td></td><td></td><td></td><td></td><td></td><td></td><td></td></tr> </table>	Med	S	M	T	W	T	F	S	Time							
Med	S	M	T	W	T	F	S																																																												
Time																																																																			
Med	S	M	T	W	T	F	S																																																												
Time																																																																			
Med	S	M	T	W	T	F	S																																																												
Time																																																																			
Med	S	M	T	W	T	F	S																																																												
Time																																																																			

Initial _____ Signature _____ Name _____ Position _____

INSTRUCTIONS: Sheet is for reproduction as needed. It should be three-hole punched and kept in a binder during camp week. Use one sheet for each camper with a prescription. Record all medicines brought to camp (up to FIVE medications per sheet). The medication, dosage and dosage schedule should be copied from the prescription. Record dispensing times and days in the blocks provided for each medication as they are dispensed. After camp, place sheet(s) inside the first aid log.

Youth Release Form
Permission for a Scout to Depart from the Premises

INSTRUCTIONS:

Youth desiring to leave camp prior to the pack's/troop's departure, or not as a part of the pack/troop, must have a release signed by their parent/guardian and approved by the unit leader. Youth will normally only be permitted to leave accompanied by their parent/guardian or for participating in an off-site activity. The form below must be used in handling all such departures. In an emergency, it may not be possible for a parent/guardian to sign the release. In this event, sufficient information must be recorded attesting to the telephone call or means of communication by which word arrived, asking for the release of the youth. This information should document the person from whom the call was received, verify telephone confirmation of the parent/guardian asking for release of the youth, and give detailed reasons for the requested release.

Request is made that: _____

Address: _____ City, State, Zip: _____

CIRCLE ONE: Pack / Troop Unit # _____ Campsite: _____

Be permitted to leave camp for the following reason:

Off-site activity or Other: _____

The Youth is to Leave On Date: _____ Time: _____

Accompanied By: _____

The Youth is to Return On Date: _____ Time: _____

In signing the request for release, Scouting America and the youth's parent(s) or guardian(s) mutually acknowledge that there will be no refund of the camp fee. Upon the youth's departure from the camp the Scouting America or it's representatives shall not be liable for any loss or injury to the youth's person or property.

This request is made by: (Parent's or guardian's signature required except as noted for emergency departure requests.)

Parent/Guardian Signature: _____ Phone: _____

Unit Leader's Signature of Approval: _____

Before leaving the camp, youth must check out with their unit leader and the camp headquarters.

APPROVALS: Unit # _____

Signed: _____ Unit Leader Date: _____

Signed: _____ Camp Director Date: _____