

Three Fires Council Operation Icicle 2024



Winter Camp LEADER and PARENT GUIDE

Version 1.5
Updated 9/26/24

Letter to Camp Leaders

Greetings:

We look forward to an exciting week of camp at Operation Icicle. This guide will help you prepare you or your unit for camp. Please review it carefully as there have been changes this year.

At Operation Icicle, our goal is to provide the highest quality customer service possible. That starts from the moment your unit decides to come to camp, all the way through your post-camp Court of Honor. We hope that for every Scout and adult leader, your week at Operation Icicle will be the highlight of your Scouting experience this year.

One of the things that makes Operation Icicle special is the opportunity for Scouts to experience a summer camp in the winter! At Operation Icicle we focus on a patrol method style of programming while also cabin camping. Baden- Powell once wrote, *"The main object of the Patrol System is to give real responsibility to as many scouts as possible"*. We strive to do just that at camp. Outside of the meals provided in a dining hall, we offer patrol-centered programming and guidance during your stay. We encourage you to read the notes on cabin camping in this guide to help you prepare for a week of patrol living.

There will be camp kickoff meetings in Fall 2024. Details on these opportunities are found later in this guide, and are also available our website, threefirescouncil.org/operationicicle Plan on attend one of these meetings to get the latest information about planning your program and get answers to any questions you may have.

It is our hope that this leader guide will serve as a resource to help meet your needs for your week at camp. If you have any questions as you plan for summer camp, please do not hesitate to contact us.

Thanks for choosing Operation Icicle!

Yours in Scouting,

Patrick Seeden

Patrick Seeden
Operation Icicle Camp Director

Ryan Predki

Ryan Predki
Operation Icicle Program Director

Prepared. For Life.
at
Three Fires Council



Three Fires Council, BSA
Norris Service Center
415 North Second St.
St. Charles, IL 60174
Phone: 630.584.9250

Operation Icicle
Fox Valley Christian Action Camp
35W624 Riverwoods Ln
St. Charles, IL 60174

Contacts

- Patrick Seeden, OP IC Camp Director.....patrick.seeden@scouting.org
- Ryan Predki, OP IC Program Director.....ryanpredki@gmail.com
- Patrick Seeden, Council Staff Advisor.....patrick.seeden@Scouting.org
- Donnie Helster, Council Program Directordonnie.helstern@scouting.org

This guide contains information to help leaders prepare for summer camp. More [information](#), can be found on the Council website at: <https://threfirescouncil.org/OperationIcicle/>



Table of Contents

Letter to Camp Leaders	I
Contacts	II
Pre-Camp Meetings	1
Camp Dates	1
Registering for Camp	1
Camper Fees & Payments	2
Provisional Opportunities (Individual Scouts).....	4
Refund Policy	4
About Camp	5
Camp Policies	7
Medical Information	8
Fires and Firewood.....	9
Additional Policies.....	10
Camp Services	11
Trading Post Services	12

Version 1.5 Updated 9/26/24

Pre-Camp Meetings

This preview meeting is for parents, adult leaders, Scoutmasters, and unit committee members and will provide an opportunity to obtain information about camp. Each unit should plan to send at least one adult leader.

Presentation Schedule

Sunday, October 6 | VIRTUAL CALL | 7:00 – 8:30pm

Sunday, October 13 | Volunteer / Staff Open House | FVCA | 12:00 – 3:00pm

Tentative Monday, October 14 | Youth, Parent, Leader Open House | FVCA | 6:00 – 8:30pm

Sunday, October 20 | VIRTUAL CALL | 7:00 – 8:30pm

Leader guides, program guides, parent guides, and other forms will be available.

You can also download them at <https://threefirescouncil.org/OperationIcicle/>

Meeting dates will be posted to our website and social media platforms.

A live online meeting option will be available, and the meetings will be recorded with the ability to watch at a later date.

Camp Dates

Operation Icicle Week	December 27 – January 1	(Friday – Wednesday)
Single Day Expeditions	December 28, 29, 30, 31	(Saturday, Sunday, Monday, Tuesday)

Registering for Camp

Registration and payment for summer camp is completed online at <https://threefirescouncil.org/OperationIcicle>

Individuals - follow the directions of your unit camp coordinator to register for Operation Icicle at FVCA. If you are camping separately from your unit as a provisional Scout, please see the Provisional Opportunities section on page 4 for more information.

Unit Coordinators – Cabin reservation and merit badge selection are all included in the camp registration. The Merit Badge selection portal opens will open on November 1st. **All payments for Operation Icicle must be current with the fee schedule to allow for class selection. Payments can be made with in the registration with a credit card or e- check; unit checks should be paid by e-check through the online registration system, not the Scout stores.**

For any questions regarding registration, please contact us at 630-797-4600.

Camper Fees & Payments

TYPE	RATE	PAYMENT DATE	DEPOSIT (Due at registration)	BALANCE	TOTAL FEE
YOUTH (Scouts BSA/Venture /Explorer)	Early Bird	Last day is October 31	\$100	\$280	\$380
	Regular	Due before December 13	\$100	\$330	\$430
	Late	After December 13	\$100	\$360	\$460
ADULT	Early Bird	Last day is October 31	\$100	\$75	\$175
	Regular	Due before December 13	\$100	\$105	\$205
	Late	After December 13	\$100	\$130	\$230
YOUTH SINGLE DAY EXPEDITION (Space Limited)	Early Bird	-	-	-	-
	Regular	Due at Registration	\$90	\$0	\$90
	Late	-	-	-	-

Deposits

- **A non-refundable \$100 deposit for each camper (each youth and adult at time of registration)**
 - **Payment of the deposit does not guarantee the Early Bird Discount.** The full fee must be paid on or before October 31, 2024 to earn the Early Bird Discount Rate.
 - Deposits are transferable between youth and adult leaders and applied to the overall camper fee. For example, a youth with the Early Bird Discount Rate of \$380 owes \$280 after the \$100 deposit is paid.

Youth Fee

- **\$380 (Early Bird Discount), \$480 (Regular), \$460 (Late)**
 - **The full fee must be paid on or before December 12, 2024 for the Early Bird Discount to apply.**
 - New Scouts who join your unit on or after December 12, 2024 are given the Early Bird rate of \$380 regardless of the payment date.
- **\$90 (Single Day Program), \$85/Day for 2+ Days**
 - **Youth may attend for a single or multiple days and receive merit badge and camp wide programming**
 - **This participant type includes a patch, along with lunch, dinner and a full day of programming**

Adult Leader Fee (Full Week)

- **\$175 (Early Bird Discount), \$205 (Regular), \$230 (Late)**
 - **The full fee must be paid on or before December 12, 2024 for the Early Bird Discount to apply.**

Payment Deadlines

Time of Registration

- Both youth and additional adult deposits are due (\$100). **This deposit alone does not guarantee the Early Bird Discount.**

Friday, October 31, 2024

- This is the last day to receive the Early Bird Discount Rate for both youth campers and adult leaders. **Payments must be made in full on or before this date to qualify for the Early Bird Discount.**

Saturday, November 1, 2024

- Youth and adult fees increase to the Regular Rate.
- New Scouts who join your unit on or after October 31, 2024, receive the Early Bird Rate.
- All camper payments (both youth and adult leader) are now due at time of registration or until December 13 to maintain the regular price.

Discounts

Early Bird Discount – Applies to all Scouts and leaders that register and pay in full and online by the Early Bird Discount payment due date. This discount is applied automatically by our online registration system. See the payment schedule for payment due dates.

New Scout Discount – Applies to Scouts who join your unit on or after the Early Bird Discount payment due date.

Provisional Opportunities (Individual Scouts)

Operation Icicle is designed for all scouts in Troops, Crews, or Posts. Scouts who cannot attend Operation Icicle as a group with their unit, will be grouped in a provisional scouting patrol with scouts and leaders. Patrols will have an opportunity to meet at our icicle breaker eve in December. This will be an opportunity to meet other campers and leaders before camp. In case of questions regarding individual scout opportunities, contact Patrick Seeden for more information. There is no additional charge for Individual Campers.

Minimum Registrants

Units with five or fewer total campers (youth and adult combined) or with less than one adult leader will be paired up with another unit or participants. Icicle Breaker Eve will be an opportunity to meet with other campers if not already connected beforehand. Being part of a larger group will ensure that your needs are better met by our patrol style-based camp. Contact the Council Program Team with any questions.

Financial Assistance

Financial assistance for camp (campership) is available only to Three Fires Council Scouts, for use at Summer or Winter Camping programs. Campership applications are reviewed by the Council Campership Committee which is comprised of volunteer representatives from all districts in the Three Fires Council. Camperships are not available for adults. Campership applications can be completed within the registration under the individual participants. The Campership Application for Operation Icicle can also be found at <https://247scouting.com/forms/?OrgKey=BSA127&id=4359>.

Applications for camperships must be received by the due date indicated on the campership request form. Any requests received after this date may not be awarded.

Campership grants are not transferrable, nor may they be split within a unit. Camperships are awarded to individuals – not units. If the individual who was awarded a campership is unable to attend camp the grant is forfeited and cannot be applied to other individuals within their registration.

Other Camp Fees

Early Arrival Fee – There are no additional fees for program. All meals and camp programming is included in the registration fees.

Refund Policy

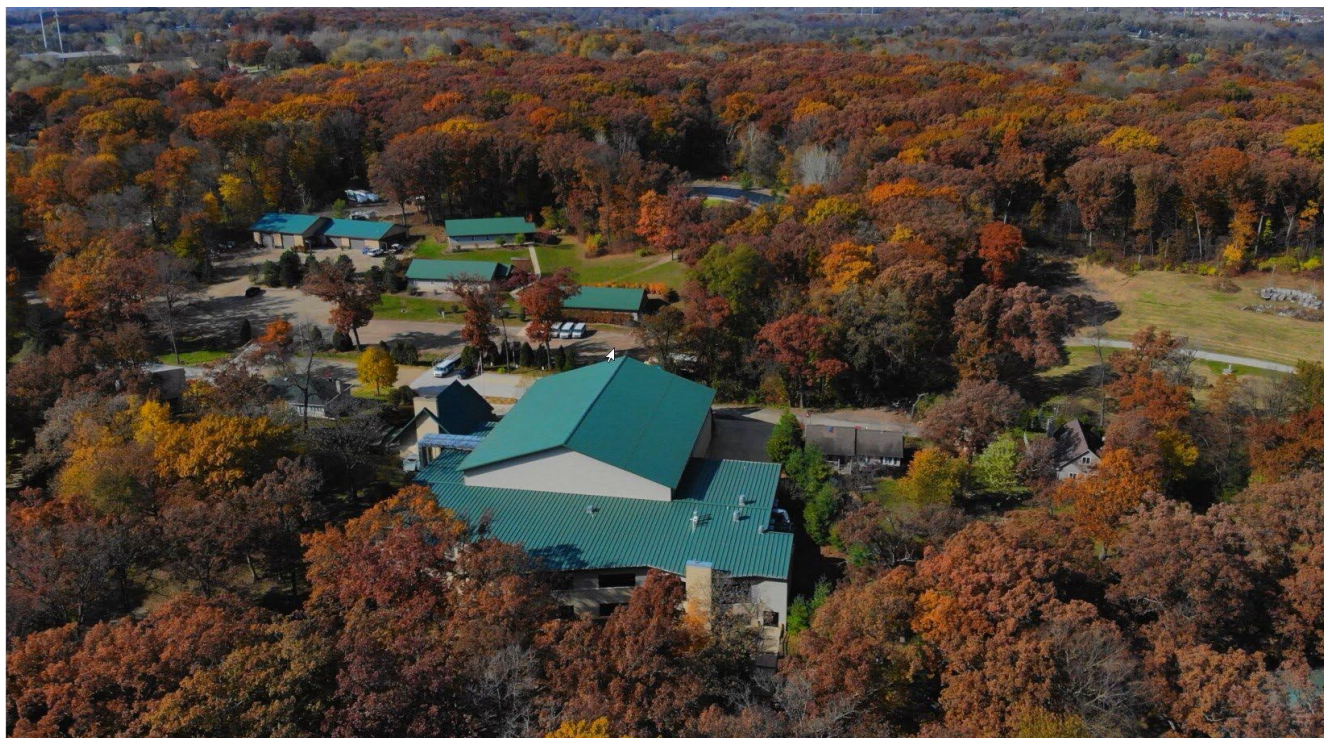
The camper fee refund policy is established by the volunteer Three Fires Council Camping Committee. **All requests for refunds must be made by using the [Refund Request Form](#) located at the bottom of the registration page.** Refund requests are not accepted by phone or email unless a refund request form is sent as an attachment.

- **All refund requests must be received at least 30 days prior to the first day of the camp session or no refund will be issued.**
- Refunds within 30 days of a camp session may be considered only in the case of an emergency such as an injury, illness, or death in the family.
- **No refunds will be made if requested after the first day of the camp session.**
- **The \$100 camper deposit is not refundable.**
- Refunds may not be processed until approximately two weeks after the camp session is complete.

STOP

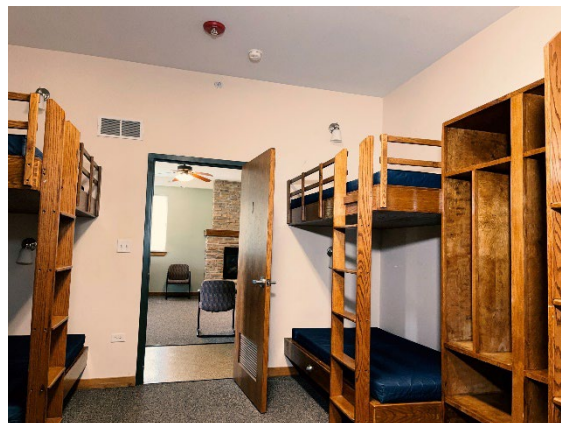
Please read the refund policy above

About FVCA – Riverwoods Camp



Fox Valley Christian Actions Riverwoods Camp is a brand-new host for Operation Icicle. Riverwoods is an 85-acre wooded campus, on the Fox River, just off Rt 25 in St Charles. Riverwoods is uniquely located—far enough away to escape the pace and noise of suburbia, close enough to be accessible with just a short drive. Riverwoods features the central Maple Multipurpose Complex which is host to the Dining Hall, full-service kitchen, indoor activity gym and program spaces. The property is also host to 5 Modern Cabins where participants will sleep. Each cabin can sleep a total of 32 individuals with 8 in 4 separate bunk rooms. Along with separated shower and bathroom accommodations, each cabin also has its own communal living space with fridge, sink, microwave and most importantly... COFFEE MAKERS! We believe that these facilities provide the best accommodation for the winter program to allow for maximum program time and minimal camping gear needs. Camp Staff members will be there to support and supervise services with each cabin group. We believe that five types of activities must be made available in for a successful camp program:

1. Activities for the Scout as an individual
2. Activities for the Scout and their friends
3. Activities for the Scout and their patrol
4. Activities for the Scout and their unit
5. Inter-unit activities



Meals and Dining

All meals will be served in the camp dining hall. Your first meal at camp will be Friday Lunch following check-in. Breakfast, lunch, and dinner are provided through Wednesdays breakfast. The only unique change to the meal schedule is Tuesday night's New Year's Eve bash where pizza and additional treats and snacks will be served. This will occur later in the evening with dinner still being served at the normal hour. While all meals are included as a participant, additional snacks and treats will be available at the onsite trading post.



The Igloo Method

While operation Icicles camping style consists of cabin camping, each cabin patrol will have a staff leader also known as our Igloo captains. They are here to make sure your experience remains cozy and fun throughout the entire week. While the Operation Icicle camp differs from the patrol method in some ways, it is also core to the program to allow for personal growth, team building, advancement and leadership.

The mission of the Scouts BSA is to prepare young people to make ethical and moral choices over their lifetimes by instilling in them the values of the Scout Oath and Law. To be successful in this mission the Scouting program has three specific objectives called the **Aims of Scouting**, which are **character development, citizenship training, and personal fitness**. The methods by which the aims are achieved are:

- Scouting Ideals
- Adult Association
- Outdoor Program
- Uniform
- Patrol Method
- Advancement
- Leadership
- Personal Growth

While Advancement is an important Method of Scouting, it should not take precedence over the other Methods of Scouting.

ADULT LEADERSHIP - By the time your troop arrives at camp, most of your adult leaders' duties have been completed. From registration to training to transportation, leaders make it possible for the scouts to come to camp.

Once at camp, adults are responsible for the health and safety of the Scouts, and for counseling the unit's youth leadership. Adults should also assist with discipline when required. Aside from these duties, adults are encouraged to take advantage of the many program opportunities available to adults, and to follow Baden Powell's motto: *"Train them, trust them, let them lead."*

The Role of Adult Leaders

Your role as a leader is to give guidance and supervision to your group's youth leadership and to individual Scouts, encourage them as they try new things, help them to stay on schedule with their goals, and provide understanding and counseling when things don't go right. As a member of a patrol and unit, Scouts will learn responsibility, cooperation, and leadership. That is a lot to ask of a Scout, but it is also why camp is such a great experience. Part of your role as a leader is to help the Patrol Method work. **Don't shortcut it. You will only be undercutting the Scout's development** (both the Patrol Method and Personal Growth are important Methods of Scouting and are as important as Advancement). Work with and through your Senior Patrol Leader and the Patrol Leaders Council and allow the youth leaders to lead.



Camp Policies

Volunteering at Camp

There are many opportunities for adults, Scouts, and even entire troops to give back to their camp.

ADULT and YOUTH VOLUNTEERS - The camp staff is continuously working to provide the best experience for you at camp. Been on camp staff or brand new to staffing? We encourage all older youth and adults looking for a unique experience to join our volunteer staff! If you have any talents or skills that can be utilized for the good of the camp, we would love to have your help! Please contact the camp administration if you are interested or looking for more information.



Medical Information

Experience has shown that scouters that double check medical information before leaving for camp can avoid unnecessary delays caused by problems that arise once the participant is at camp.

These policies are set by the National Council of the Scouts BSA and the State of Wisconsin. Compliance with the policies, regarding the completion of the health forms, is **mandatory** and necessary to maintain the admirable safety record of the Scouts BSA. This can be particularly difficult to deal with as available options are limited once the troop has arrived at camp. Please help us avoid these awkward moments that can diminish the memories of an otherwise worthwhile experience.

The [BSA Annual Health and Medical Record \(form # 680-001\)](#) is required for each youth and adult participant. Part C requires a medical examination having been completed within the past 12 months by a licensed medical physician, nurse practitioner, or physician's assistant. Upon arrival at camp, a copy of a current medical form for each youth and adult must be turned in to the medical staff. **An attached photocopy of the camper's insurance card must also be provided as directed by Part A.** Copies should also be kept by the unit or parents as medical forms will not be returned at check out.

Medication Policy

All medication brought to camp by a person under 18 years of age shall be kept in a locked unit provided by the camp or in the health lodge and shall be administered by a qualified adult leader designated by the camp health supervisor, except that bee sting medication, inhalers, an insulin syringe or other medication or device used in the event of life-threatening situations may be carried by a camper or staff member. Each camper 18 years of age or older may take responsibility for the security of his or her personal medication provided it is stored in a locked unit.

All medications brought to camp by a camper shall be in containers that are clearly labeled to include the name of the camper or staff member, the name of the medication, the dosage, the frequency of administration and the route of administration. All medication prescribed by a physician shall, in addition, be labeled to include the name of the prescribing physician, the prescription number, date prescribed, possible adverse reactions, the specific conditions when contact should be made with the physician and other special instructions as needed.

When a medication is administered to a camper, the qualified adult leader designated by the camp health supervisor shall make a record of the action in a bound book provided by the Medical Staff, indicating the following information: name of the person receiving the medication or treatment; ailment; name of the medication or treatment; quantity given; date and time administered; by whom administered; and comments.

Unit leaders are responsible for ensuring that their Scouts take medications as directed.

Insurance

All youth and adults at Operation Icicle must be registered members of Three Fires Council are covered by the Council Accident and Insurance Plan. **Units from other councils must provide their insurance policy number to the camp at least two weeks prior to arrival at camp.** Please keep in mind that this coverage is not intended to replace or diminish the need for family health insurance. Scouts BSA insurance provides supplemental coverage only. Special conditions are as follows:

1. Injuries or illness sustained prior to arriving in camp, requiring attention during your stay, are not covered.
2. Every injury or illness must be reported to the Health Lodge immediately to be covered.
3. Medical expenses incurred after camp because of an illness or injury sustained at camp are covered. These must be reported to the Council Service Center for clearance with the insurance provider.
4. Out of council units should check with their home council office to determine plan limits.
5. Unregistered youth, adults, and visitors are not covered by the Three Fires Council accident insurance.

Fires and Firewood

Campfires are allowed only inside the metal fire rings on property or within the chimneys inside each cabin. Do not create new fire scars. Fires may be prohibited due to weather conditions.

Additional Policies

1. The Scout Oath and Law are the codes of conduct for behavior expected at Operation Icicle
2. Leaders that are present must be registered members of the BSA as leaders, including the completion of a criminal background check and Youth Protection Training before the start of camp.
3. Youth Protection guidelines must always be followed by youth and adults. Please review Youth Protection guidelines before attending camp.
4. While at camp, all Scouts, adult leaders, and visitors must wear a wristband provided during check-in.
5. Everyone – campers, leaders, and staff – must sign-in and sign-out of camp when leaving the property. The sign-in and sign-out list is in the Administration Building.
6. Any camper who is a minor and is to leave camp for any reason needs to be signed out by a parent or legal guardian. All other individuals with parental permission to take a minor away from camp, must be listed on the camper's medical form and must have a photo ID to verify their identity.
7. Closed toed and closed heeled shoes and socks must always be worn, except when in a tent, showering, or during applicable program times.
8. Do not tamper with smoke detectors, fire extinguishers, or another emergency or lifesaving equipment.
9. Alcoholic beverages, illegal drugs, fireworks, or firearms are not permitted in camp. Vandalism, theft, personal injury or other illegal actions will not be tolerated. Local authorities will be called, and damages will be assessed.
10. Fishing from the shore is permitted during schedule program on a catch and release basis. Fishing permits for individuals 16 years or age or older are required in Illinois.
11. FVCA is a NON-SMOKING facility. Violators will be asked to leave the property.
12. Personal firearms may NOT be brought to camp. Personal firearms will be confiscated and secured by the Shooting Sports Director or Camp Ranger until the owner's departure. Personal shooting equipment may not be stored in campsites or vehicles.
13. Personal vehicles are not allowed on camp roads at any time. They must be kept in the parking lot.
14. Report all injuries on camp property to the health lodge and any damage or breakage of camp facilities or equipment to the Wheeler office as soon as possible.
15. Do not enter or pass through another patrols cabin without permission
16. Campers must be in their campsite and quiet by 10:30pm to 6:30am. Exceptions only occur in instances of camp program

Camp Services

Health Lodge



The Health Lodge is in the Main Multipurpose Building. A qualified Health Officer is on duty 24 hours a day. While camp is in session, routine medical needs, and daily medical care are provided during the day. If necessary, a staff member or unit leader will accompany patients to a nearby medical facility. Should a Scout or leader require hospitalization, the Camp Director will notify their parents or family. Upon check-in, please notify the Health Officer of any medical conditions or medications being taken by youth and adults.

Lost and Found

A lost and found is maintained in the Multipurpose headquarters Building. If you have lost an item, check there first. If you have found an item without an owner, bring it to the office so that we can try to find who it belongs to. Any unclaimed items are transported to the Council Service Center in St. Charles, Illinois and can continue to be claimed. A month after the end of camp, all remaining items are donated to a local charitable organization.

Trading Post Services

Operation Icicle features a Trading Post fully stocked with a variety of camp goods and snacks. Here, Check the program schedule for specific times.

Commissary Services

CAMP MENU - Our menu is reviewed annually by an approved registered dietician. Menus are set to provide each Scout with the energy and proper nutrition needed to make the most of the week at camp. The food service staff strives to provide the highest quality service. We pride ourselves on attention to detail and meeting your needs. We will see that no camper goes hungry and that food waste in campsites is minimized. If concerns arise during the week, please immediately communicate with the Food Service Staff, Business Manager, or Camp Director. Most accommodations can be rectified before the next meal is served. We love to hear your feedback!

DIETARY RESTRICTIONS - We will make every possible accommodation for Scouts or leaders who have medical, physical, or religious dietary restrictions. To make these accommodations, please make sure to note any dietary restrictions in your registration.

Suggested Packing List

PLEASE PACK EVERYTHING INTO ONE EASY TO CARRY BACKPACK, DUFFEL BAG, OR SUITCASE.

Be sure your name and unit number are clearly labeled on all your belongings!

Plan ahead and be prepared for the weather!

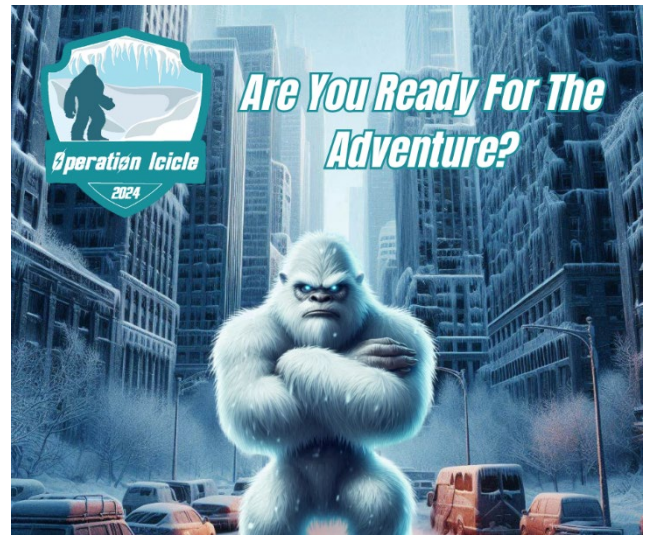
- BSA Annual Health and Medical Record (form # 680-001) with insurance card copy
- Hand sanitizer
- Medications in original containers
- Wallet / Money / Identification (recommend \$40)
- Official Scouting Uniform
- OA Sash (if a member)
- Scouting related T-shirts
- Long pants
- Base layers
- Belt
- Underwear
- Socks
- Sleeping clothes
- Sweatshirt or jacket
- Raincoat or poncho
- Winter Coat and pants
- Hat
- Gloves
- Comfortable closed toed shoes
- Boots
- Cabin shoes
- Shower shoes
- Shower towel
- Sleeping bag (or sheets & blanket)
- Pillow
- Twin size sheets
- Flashlight and extra batteries
- Water bottle or canteen



- Laundry bag for dirty clothes
- Toiletry kit – toothbrush, toothpaste, soap, shampoo, comb, etc.
- Watch
- Personal first aid kit
- Sunscreen (non-aerosol)
- Pocket knife (optional)
- Folding chair (optional)
- Fishing equipment (optional)

Program Specific Items:

- Pen/pencil and paper (All MB)
- Merit Badge Prerequisite materials



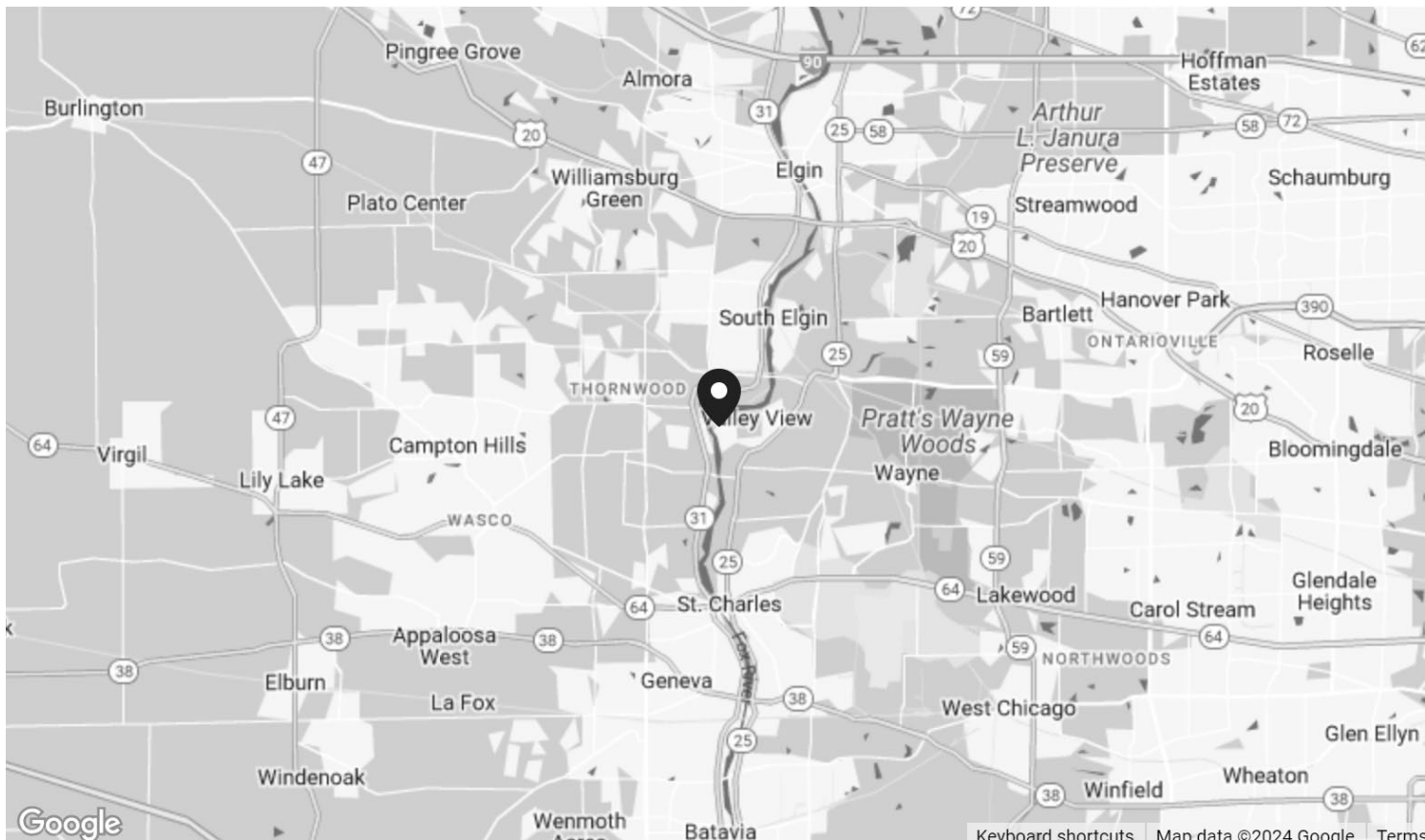
DO NOT BRING

Firewood, Fire Starters, Alcohol, Illegal Drugs, Controlled Substances, Fireworks, Pets, Firearms, Ammunitions.

***TFC assumes no responsibility for lost or broken items of any kind brought to camp. ***

Map of Camp Riverwoods

Fox Valley Christian Action – Riverwoods Camp
35W624 Riverwoods Lane
St. Charles, IL 60174



Operation Icicle Parent Guide

Dear Parent,

Thank you for supporting your Scouts Scouting experience by sending them to winter camp. Camp is a place where youth can experience Scouting at its best. Led by a highly qualified, well-trained staff, Scouts will have opportunities not available anywhere else. They will try new things, meet new people, and learn responsibility, teamwork, and self-reliance.

Because we want your Scout to get the most out of camp, we have included some tips to guide you and your Scout as you prepare for this winter's adventure.

ACTIVITIES

During the day, staff members work with the Scouts to

help them earn merit badges and other awards, work towards rank advancement, and explore other opportunities such as hikes and games. Lord Baden-Powell, the founder of Scouting, said, "Scouting is a game with a purpose," and at Operation Icicle, we make sure every program we offer is exciting, challenging, fun, and educational.

MEDICAL FORMS

The latest [BSA Annual Health and Medical Record \(#680-001\)](#), signed by a licensed medical practitioner within the last year, is required. A photocopy of an insurance card must also be attached. Please keep a copy of this form for your records. Wisconsin state law requires us to keep the form on file at camp, so it will not be returned.

MEDICATION POLICY

All medications brought to camp MUST be kept in the original container and the unit leader must be informed. While your Scout is at camp, medications will be kept in a secured container provided by TFC and dispensed by a troop leader approved by the camp health officer. Exceptions to this policy include emergency allergy kits and inhalers, which Scouts may carry with them.

WHAT SHOULD MY SCOUT BRING?

A detailed packing list is included in the Leader Guide sent to your adult unit leaders. Ask your troop leaders for a copy of the list. The Scouts BSA Handbook also contains a packing list for long-term camping. In general, they will need the same equipment as on a typical weekend campout, but also enough clothing to last the week. Please do not send electronics to camp. These items distract Scouts from a fun and true outdoor experience at camp!

WHAT IF MY SCOUT GETS HOMESICK?

Homesickness is a common problem at camp. Camp staff is trained in counseling techniques, and several staff members are specifically trained to help homesick Scouts. Our first step is always to talk to the Scout about what they like to do at camp, and then get them doing it, which cures most cases of homesickness. More severe cases are usually the result of other problems, such as being teased. Our staff will quickly identify and solve these problems.

Although it might seem like a good solution at first, the reality is that contact with home actually *increases* homesickness. For this reason, Scouts will not be allowed to call home without permission from their troop leader. Calls from home are strongly discouraged.

WHAT WILL MY SCOUT DO AT CAMP?

A typical daily schedule is:

- 6:30 AM - Wake up
- 7:30 AM - Breakfast
- 9:00 AM – Program Session 1
- 12:30 PM - Lunch and rest hour
- 2:00 PM – Afternoon Programs
- 5:30 PM - Dinner
- 7:00 PM - Evening activities/campfires 10:00 PM - Lights Out



For more commonly asked questions, visit our FAQ at the link below:
(FAQ Revision 1.5|9/24/24)