

# Scouting America™

Aloha Council

Leader's and Parent's Guide

Camp Dino Roar  
Ke' ehi Lagoon Memorial  
June 13-14 and June 20-21, 2026



# Scouting America™



## Aloha Council

Aloha Leaders and Parents,

The Scouting America, Aloha Council and Hikina/Komohana Districts are really excited about this year's Cub Scout Day Camp and this year's theme - "Camp Dino Roar", so we have designed the activities around this theme. We are so appreciative of the many Troop and Pack leaders, volunteers, Aloha Council staff, and Chaminade University undergraduates that have come together to make this Day Camp fun and educational. Please join us in thanking them and let's have a lot of fun!

**Sheldon Takahashi**

Day Camp Director

**Kelsey Takahashi**

Program Director

The Cub Scout Day Camp on Oahu is a fun-filled weekend of group activities for Cub Scouts in an outdoor learning environment and is composed of two-day sessions with no overnight component. The program is designed to provide fun and skills that are difficult to learn in an indoor setting. There are two sessions to choose from for you and your family's convenience.

Our Cub Scout Day Camps are run by the Scouting America, Aloha Council with assistance from volunteers, trained Pack Leaders, and Troop Leaders to ensure a safe and secure learning environment. The aim of this guide is to explain the role that you, as a leader or parent will have in making this Day Camp a valuable experience for everyone involved and to ensure that we strive to meet the National Standards set by Scouting America.

## Safeguarding Youth Guidelines

All Cub Scout Day Camp staffers are required to abide by Scouting America's *Safeguarding Youth Guidelines*. All on-site Pack leaders must submit a copy of their Safeguarding Youth Training certificate upon registration. It is also highly recommended that all adults attending complete the online Safeguarding Youth Training course at [my.scouting.org](http://my.scouting.org) prior to arriving at Camp and review the *Guide to Safe Scouting*.

## Transportation

Transportation to and from camp will be the responsibility of the parent and/or the Pack. Hawaii State law and Scouting America policy requires that each person have their own seat belt. Please note that the child car seat law has been updated and keiki 4 - under 10 years of age under 4'9" must be in a child safety seat or booster seat.

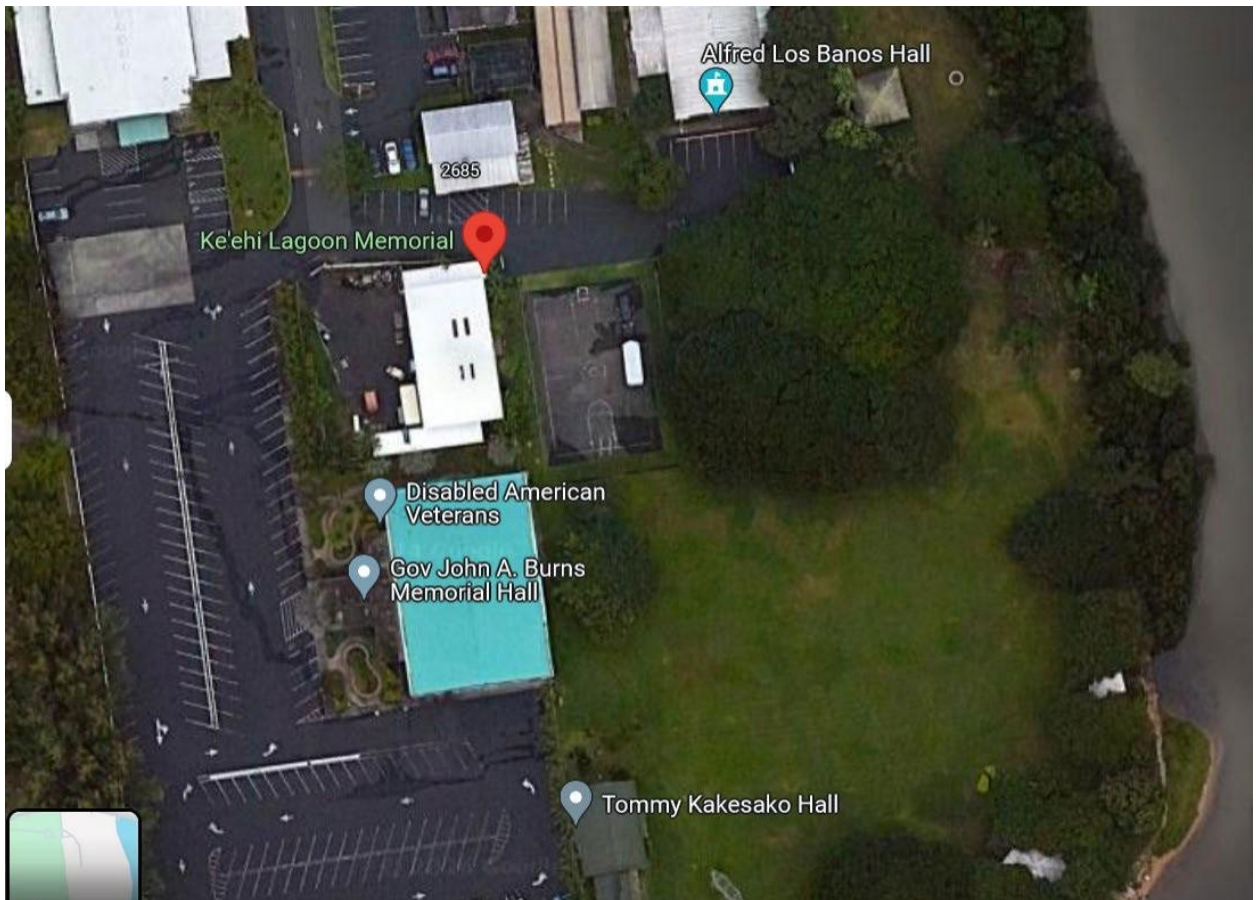
## Location

The Cub Scout Day Camp will be at Ke'ehi Lagoon Memorial State Park in the grassy area near the Disabled American Veterans (DAV) building. When making a right from Nimitz Highway into the State Park, make a quick left to the DAV area.

# Scouting America<sup>™</sup>

## Aloha Council

### Parking



Free parking will be available along the line of parking spots on south side of the Alfred Los Banos Hall and behind the Gov. John A Burns Memorial Hall/Disabled American Veterans office. Please back in for the regular spots that are not angled to provide for easier evacuation in case of emergency. Please come early and if possible, carpool as parking is very limited.

### What to bring

Refillable water bottle, lunch, sunscreen, mosquito repellent, change of clothes if needed. Class A uniform for leaders during flag ceremonies and Class B uniform (pack t-shirt) for cub scouts. If possible, please bring a pair of gloves for our service project to clean the Day Camp grounds at the conclusion of the day camp on Sunday.

### What not to bring

**Bows, arrows, sling shots, and BB guns will be provided for use, no personal weapons or shooting sports equipment will be allowed.**

# Scouting America™

## Aloha Council

### Registration/Check-in

Please plan to arrive early and bring your Health forms (A, B1, and B2) and a copy of your insurance card for each person in your family who will be on site. At Registration, all Scouts, siblings (under the age of 5), and parents will be issued a colored wrist band for the day, along with their group assignment.

Tetanus immunization must be dated within the last 10 years. An immunization exemption form is available from the Scouting America website if the family requires the form.

Please note that children entering Kindergarten in the Fall (future Lion cub scouts) are unable to participate in the day camp activities as Day Camp occurs in the summer before school begins.

\*\*\*Both parent and child will need to sign up on the Aloha Council site. Navigate to the Calendar on the Aloha Council website and go to the June Oahu Day Camp Session of your choice, log in to access the Black Pug system for the event. Children will not be able to sign up by themselves. There will not be walk in registrations so please sign up beforehand. All Cub scouts need to be accompanied by their parent/guardian when on the archery, BB gun, and slingshot ranges.

If you are volunteering at a station and your child will need accompanying at the ranges or if your child needs accommodation, please inform the Camp Director or Program Director as early as possible.

### Lunch

Please pack a lunch, bring your refillable water bottle, and bring your camp chairs. There are places to purchase food nearby if needed, but with the 30-minute lunch, it does not leave much time for travelling offsite.

### Lunch for staff and volunteers

There will be an option for staff and volunteers to purchase lunch for \$15 per day or to bring their own lunch. There will be a 30-minute lunch so please make sure to arrange to bring lunch if you have not pre-ordered lunch. Lunch orders must be placed by June 10th, 2026 to allow time for ordering.

### Restrooms

There are portable toilets between the archery and the slingshot ranges.

# Scouting America™

## Aloha Council

### Rest area

A rest area will be available for you and your family as a place to relax. This site will not be staffed and requires parents to supervise their children. Please make sure to bring chairs, mats, snacks, a water bottle, wipes, an extra change of clothes, and toys or books that your child likes that is not a choking hazard. This rest area will be under the canopy of trees near the sling Shot range.

### Schedule

<b>Time</b>	<b>Activity</b>
7:30 AM	Registration begins
8:15 AM	Gathering activity and Flag Ceremony
8:30-9:00AM	1 <sup>st</sup> Station Rotation
9:05-9:35 AM	2 <sup>nd</sup> Station Rotation
9:40-10:10AM	3 <sup>rd</sup> Station Rotation
10:15-10:45AM	4 <sup>th</sup> Station Rotation
10:50-11:20PM	Lunch group 1/ Station rotation #5 for 2 <sup>nd</sup> lunch group
11:25-11:55PM	Lunch group 2/ Lunch group 1 Station rotation #5
12:00-12:30PM	6 <sup>th</sup> Station Rotation
12:35-1:05PM	7 <sup>th</sup> Station Rotation
1:10-1:40PM	8 <sup>th</sup> Station Rotation
1:45 PM	Closing ceremony and service project

# Scouting America™

## Aloha Council

### Stations

#	Station Name	#	Station Name
1	Ally & Anky's Archery Range	7	Meteor Landing
2	Dino Diner	8	Di-KNOT-saur Keychains
3	Dino-SOARS	9	CIFAL Honolulu: Don't Choose Extinction
4	Dino-Divers	10	Dino Bathbombs
5	Fossil Prints	11	Biome BB Range
6	Mega Golf	12	Stretchasaurus Slingshots

### Station descriptions

1. Ally & Anky's Archery Range - Test your aim and precision at the Archery Adventure station, where you can shoot arrows at various targets and challenge your friends to hit the bullseye.
2. Dino Diner - Learn and experience the joy of outdoor cooking with box ovens and create delicious Dino treats. Fun and educational for all ages.
3. Dino-SOARS – Soar like a Pterodactyl. Come and make Styrofoam planes and test your skills by flying them in our obstacle course.
4. Dino-Divers – Test your fishing skills and see if you can reel in a Plesiosaurus, Mosasaurus and Ichthyosaurus.
5. Fossil Prints – Ready to take home your very own fish print. Gyo-taku is a traditional Japanese art form where you paint a fish and press it onto paper to create a detailed, beautiful print that looks just like a fish!
6. Mega Golf – Come and play our dinosaur themed backyard golf! Use your skills to navigate through obstacles and hungry dinosaurs!
7. Meteor Landing – Don't become extinct like the dinosaurs. Find your way through the obstacle course without being hit by a meteor.
8. Di-KNOT-saur Keychains – Don't lose your DI-KONT-saur! Come and make your very own paracord keychain!
9. CIFAL Honolulu: Don't Choose Extinction- Come and learn about Dinosaur facts and sustainability. Brought to you by Chaminade University School of Natural Science and Mathematics.
10. Dino Bathbombs – What can it be? I can't wait to see what's inside the egg. Make a Dino Bathbomb with a surprise in the middle.
11. Biome BB Range – Experience BB gun shooting at various targets. Range masters and highly experienced volunteers will be present to provide a safe learning experience.
12. Stretchasaurus Slingshots- Put your slinging skills to the test at the Slingshot Showdown range, where you can aim and launch projectiles at targets for a thrilling and competitive experience.

# Scouting America

## Aloha Council

### Station Map





## Camp Health officer and emergencies

If anyone is in need of medical care, the Camp Health Officer station is near the health form check in area. If it is a medical emergency, call 911 and direct someone to get the Camp Health Officer immediately.

## Medications

If your children need their medication, parents please keep them with you and administer it to them as needed.

## Emergencies and alerts

In the event of an emergency or if there is an intruder, please notify the Day Camp Director or Program Director immediately.

**In case of an active shooter, call 911 immediately. Station leaders please assume leadership over the station participants and help the group get to safety. Range masters, if possible, secure weapons.**

In the event of a fire, contact the Day Camp Director or Program Director and call 911 and make sure to move your group safely away from the area affected. Remember to be upwind of the fire area to avoid smoke and sparks. There are several fire extinguishers on property. If there is a tsunami alert, please get to a tsunami evacuation zone. This is best done by driving away from Ke'ehi Lagoon Memorial and driving inland.

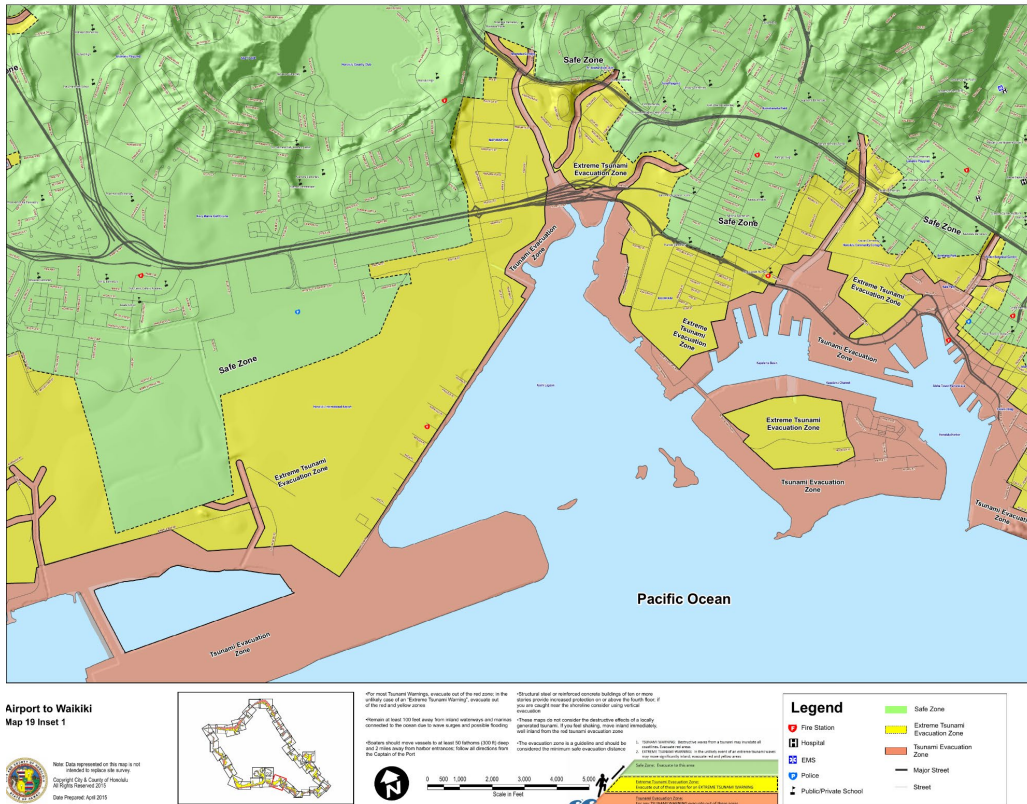
O'ahu has two Tsunami Evacuation Zones which together make up the Tsunami Hazard Area.

- **Standard (Red) Zone:** Evacuated any time there is a Tsunami Warning (Ke'ehi Lagoon Memorial). Nearest evacuation to a yellow zone is in the parking lot of the Ke'ehi Lagoon Beach Park near the light rail.
- **Extreme (Yellow) Zone:** Only evacuated if there is a Tsunami Warning due to an earthquake originating from Eastern Aleutian Islands with a magnitude 9.0 or greater

(Ref: City and County of Honolulu Tsunami Sign Project)

# Scouting America<sup>TM</sup>

## Aloha Council



[https://static.pdc.org/tsunami/oahu/Airport to Waikiki map19 inset1.png](https://static.pdc.org/tsunami/oahu/Airport%20to%20Waikiki%20map19%20inset1.png)

## Rules/Reminders

Your children's safety is of the utmost importance. We ask that each cub scout uses the buddy system. (Parent/their cub scout child or cub scout/cub scout) Parents please make sure your child does not go to the restroom alone.

Follow directions provided by the station leaders and den leaders. Absolutely no shooting arrows or pellets at others. Violence of any kind will not be tolerated. Everyone will need to follow rules, so we stay safe and have a fun time.

**No alcohol, smoking, electronic cigarettes, or illicit drugs at Day Camp. If you need to smoke/vape, there will be an area away from the youth. For the youth, no electronics allowed. No personal weapons or shooting sports equipment allowed.**

## Advancement opportunities

Participation in day camp helps to go towards obtaining achievements. Day camp will count as 1 of 3 Cub Scout Activities for Summertime Fun (for Tigers through AOL). Participation in the shooting sport ranges fulfills the requirements for all ranks for the archery, BB gun, and sling shot adventures.

# Scouting America™

## Aloha Council

### Acknowledgments

Thank you to all the Scouting America Aloha Council professional staff, adult leaders, scouts, and volunteers whose efforts made this Cub Scout Day Camp possible. Thank you to Chaminade University and students for their dinosaur fossil and sustainability station! Mahalo to all of the parents who signed up their Cub Scout(s) and spent the whole weekend together at Day Camp!

And special thanks to the following units for volunteering at Day Camp!

Pack 9 Moanalua  
Pack 35 Noelani Elementary  
Pack 147 Aiea  
Pack 167 Ewa Beach  
Pack 181 Nuuanu Elementary  
Pack 201 Maemae Elementary  
Pack 564 Mililani Mauka  
Troop 9 Moanalua  
Troop 10 Kaimuki  
Troop 35 Noelani Elementary  
Troop 201 Nuuanu  
Troop 223 Kailua  
Troop 664B Mililani  
Troop 664G Mililani  
Troop 18 - Maui (B)  
Troop 180 - Maui (G)  
Troop 1 - Big Island