



Leader's and Parent's Guide

World's Fair
Invention Convention
Ke' ehi Lagoon Memorial
June 21-22 and June 28-29, 2025



Scouting America



Aloha Council

Aloha Leaders and Parents,

The Scouting America, Aloha Council and Hikina/Komohana Districts are really excited about this year's Cub Scout Day Camp and this year's theme - "Invention Convention: World Fair", so we have designed the activities around this theme. We are so appreciative of the many Troop and Pack leaders, volunteers, Aloha Council staff, and Chaminade University undergraduates that have come together to make this Day Camp fun and educational. Please join us in thanking them and let's have a lot of fun!

Kristine Honda
Day Camp Director

Dave Morris
Program Director

The Cub Scout Day Camp on Oahu is a fun-filled weekend of group activities for Cub Scouts in an outdoor learning environment and is composed of two day sessions with no overnight component. The program is designed to provide fun and skills that are difficult to learn in an indoor setting. There are two sessions to choose from for you and your family's convenience.

Our Cub Scout Day Camps are run by the Scouting America, Aloha Council with assistance from volunteers, trained Pack Leaders, and Troop Leaders to ensure a safe and secure learning environment. The aim of this guide is to explain the role that you, as a leader or parent will have in making this Day Camp a valuable experience for everyone involved and to ensure that we strive to meet the National Standards set by Scouting America.

Youth Protection Guidelines

All Cub Scout Day Camp staffers are required to abide by Scouting America's *Youth Protection Guidelines*. All on-site Pack leaders must submit a copy of their Youth Protection Training certificate upon registration. It is also highly recommended that all adults attending complete the online Youth Protection Training course prior to arriving at Camp and review the *Guide to Safe Scouting*.

Transportation

Transportation to and from camp will be the responsibility of the parent and/or the Pack. Hawaii State law and Scouting America policy requires that each person have their own seat belt. Please note that the child car seat law has been updated and keiki 4 - under 10 years of age under 4'9" must be in a child safety seat or booster seat.

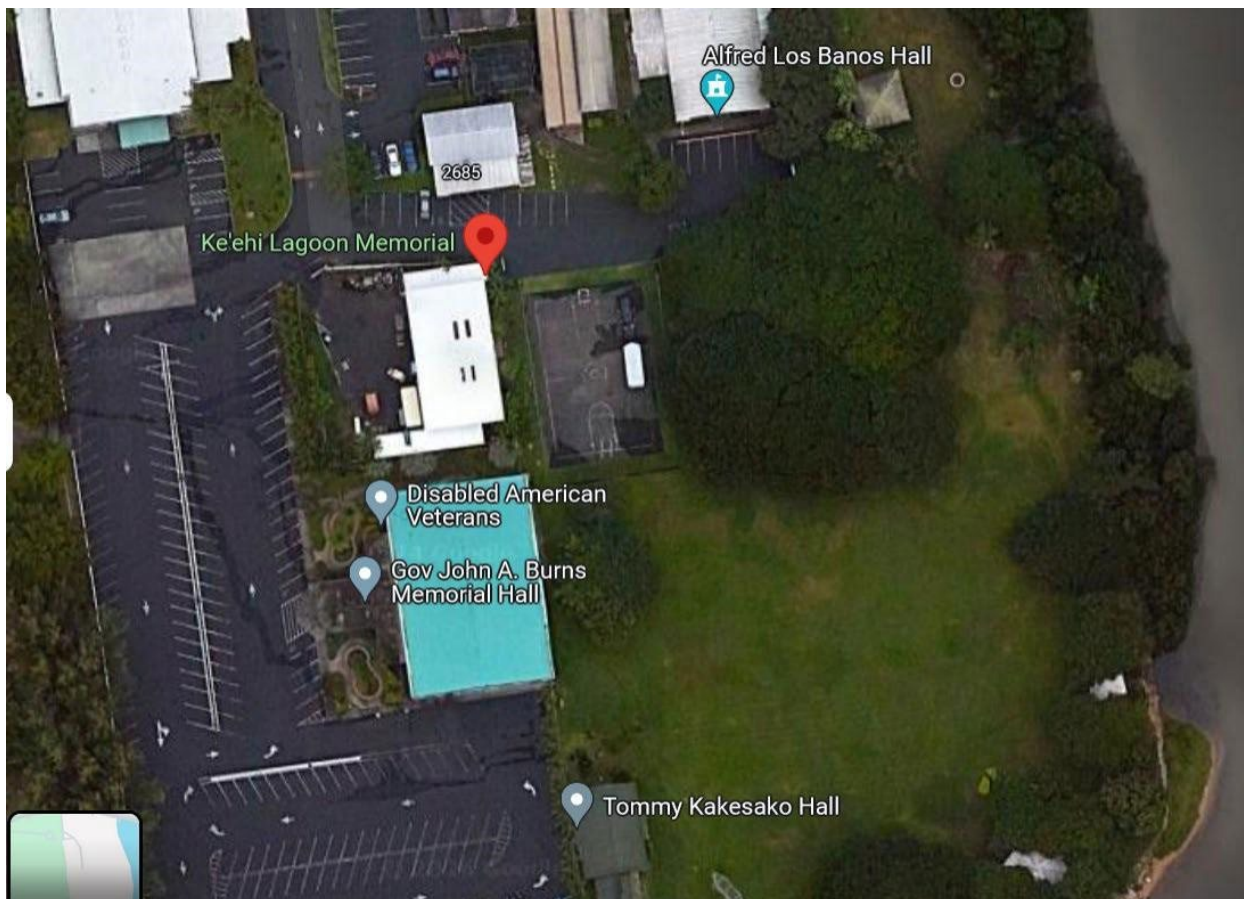
Location

The Cub Scout Day Camp will be at Ke'ehi Lagoon Memorial State Park in the grassy area near the Disabled American Veterans (DAV) building. When making a right from Nimitz Highway into the State Park, make a quick left to the DAV area.

Scouting America[™]

Aloha Council

Parking



Free parking will be available along the line of parking spots on south side of the Alfred Los Banos Hall and behind the Gov. John A Burns Memorial Hall/Disabled American Veterans office. Please back in for the regular spots that are not angled to provide for easier evacuation in case of emergency. Please come early and if possible, carpool as parking is very limited.

What to bring

Refillable water bottle, lunch, sunscreen, mosquito repellent, change of clothes if needed. Class A uniform for leaders during flag ceremonies and Class B uniform (pack t-shirt) for cub scouts. If possible, please bring a pair of gloves for our service project to clean the Day Camp grounds at the conclusion of the day camp on Sunday. Also, for staff, getting in a uniform/costume with an Invention Convention: World Fair theme would be great to set the theme for the cub scouts.

What not to bring

Bows, arrows, sling shots, and BB guns will be provided for use, no personal weapons or shooting sports equipment will be allowed.

Scouting America



Aloha Council

Registration/Check-in

Please plan to arrive early and bring your Health forms (A, B1, and B2) and a copy of your insurance card for each person in your family who will be on site. At Registration, all Scouts, siblings, and parents will be issued a colored wrist band for the day, along with their group assignment. Scouts will receive a wristband, a bag with map and station schedule, a day camp t-shirt and a nametag.

Tetanus immunization must be dated within the last 10 years. An immunization exemption form is available from the Scouting America website if the family requires the form.

Please note that children entering Kindergarten in the Fall (future Lion cub scouts) are unable to participate in the day camp activities as Day Camp occurs in the summer before school begins.

***Both parent and child will need to sign up on the Aloha Council site. Navigate to the Calendar on the Aloha Council website and go to the June Oahu Day Camp Session of your choice, log in to access the Black Pug system for the event. Children will not be able to sign up by themselves. There will not be walk in registrations so please sign up beforehand. All Cub scouts need to be accompanied by their parent/guardian when on the archery, BB gun, and slingshot ranges.

If you are volunteering at a station and your child will need accompanying at the ranges or if your child needs accommodation, please inform the Camp Director or Program Director as early as possible.

Lunch

Please pack a lunch, bring your refillable water bottle, and bring your camp chairs. There are places to purchase food nearby if needed, but with the 30 minute lunch, it does not leave much time for travelling offsite.

Lunch for staff and volunteers

There will be an option for staff and volunteers to purchase lunch for \$15 per day or to bring their own lunch. There will be a 30 minute lunch so please make sure to arrange to bring lunch if you have not pre-ordered lunch. Lunch orders must be placed by June 13th, 2025 to allow time for ordering.

Restrooms

There are portable toilets between the archery and the slingshot ranges.

Scouting America



Aloha Council

Rest area

A rest area will be available for you and your family as a place to relax. This site will not be staffed and requires parents to supervise their children. Please make sure to bring chairs, mats, snacks, a water bottle, wipes, an extra change of clothes, and toys or books that your child likes that is not a choking hazard. This rest area will be under the canopy of trees near the Slime Lab and Sling Shot Showdown range.

Mobile Trading Post

There will be a mobile Trading Post for your convenience. There will be den level books, hats, and water bottles available (subject to change).

Schedule

Time	Activity
7:30 AM	Registration begins
8:15 AM	Gathering activity and Flag Ceremony
8:30-9:00AM	1 st Station Rotation
9:05-9:35 AM	2 nd Station Rotation
9:40-10:10AM	3 rd Station Rotation
10:15-10:45AM	4 th Station Rotation
10:50-11:20PM	Lunch group 1/ Station rotation #5 for 2 nd lunch group
11:25-11:55PM	Lunch group 2/ Lunch group 1 Station rotation #5
12:00-12:30PM	6 th Station Rotation
12:35-1:05PM	7 th Station Rotation
1:10-1:40PM	8 th Station Rotation
1:45 PM	Closing ceremony and service project

Scouting America



Aloha Council

Stations

#	Station Name	#	Station Name
1	Archery Adventure	7	Slime Lab
2	Slingshot Showdown	8	Hibiscus Tea Chemistry Lab
3	BB Gun Adventure	9	Catapult and Pulley Challenge
4	Robotics Design Lab	10	Microscope Marvels and Forensics Lab
5	Helicopter Launch Pad	11	Soaring Rockets Launch Pad
6	Fabulous Box Oven Cooking	12	Escape room challenge

Station descriptions

1. Archery Adventure - Test your aim and precision at the Archery Adventure station, where you can shoot arrows at various targets and challenge your friends to hit the bullseye.
2. Slingshot Showdown - Put your slinging skills to the test at the Slingshot Showdown range, where you can aim and launch projectiles at targets for a thrilling and competitive experience.
3. BB Gun Adventure – Experience BB gun shooting at various targets. Range masters and highly experienced volunteers will be present to provide a safe learning experience.
4. Robotics Design Lab - Explore the exciting world of robotics at the Robotics Revolution station, where you can make a robot yourself!
5. Helicopter Launch Pad - Make and launch rubber band helicopters, then watch them take off!
6. Fabulous Box Oven Cooking -Learn and experience the joy of outdoor cooking with box ovens and create delicious treats. Fun and educational for all ages.
7. Slime Lab - Dive into the world of slime creation and experimentation, where you can mix and mold slime for a fun hands-on experience.
8. Hibiscus Tea Chemistry Lab – Experiment with Hibiscus tea litmus testing to discover the pH of different substances.
9. Catapult and Pulley Challenge- Experiment with catapults and pulleys to launch objects and explore the principles of physics in a fun and interactive way.
10. Microscopes – Explore the microscopic world and uncover forensic secrets by analyzing specimens. Microscopes kindly provided by Chaminade University's I am a scientist STEM outreach program and staffed by Chaminade undergraduates.
11. Soaring Rockets Launch Pad - Make and launch paper rockets, then watch them soar high into the sky!
12. Escape Room Challenge- Experience the thrill of an outdoor escape room where you solve puzzles and challenges to unlock the secrets and escape!

Scouting America

Aloha Council

Station Map





Outdoor Code for Cub Scouts

As an American, I will do my best to --

*** Be clean in my outdoor manners.**

A Cub Scout takes care of the outdoors and keeps the outdoors clean. A Cub Scout knows that putting marks on buildings, trees, or natural objects causes permanent damage.

*** Be Careful with fire**

A Cub Scout may enjoy a campfire only with adult leaders. A Cub Scout knows not to play with matches and lighters.

*** Be Considerate in the outdoors.**

A Cub Scout shares our outdoor places and treats everything on the land and in the water with respect.

*** Be Conservation-minded**

A Cub Scout works to restore the health of the land so others may enjoy, live, and learn from it as a part of the Web of Life.

<https://www.scouting.org/outdoor-programs/outdoor-ethics/outdoor-code/>

Service Project

Please join us for a brief service project at the conclusion of the weekend. We will practice the Outdoor Code and Leave no trace principles and clean the area. There are rakes and trash bags we can use. Please separate recyclables. Filled trash bags need to be disposed of in the dumpsters along the west wall of the parking lot.

Media

If there is a reporter from the media who comes, please respond by saying "No comment" and alert the Day Camp Director or Program Director. The appropriate person to comment would be our Day Camp Advisor St John Molale and Scout Executive Blake Parsons.

Camp Health officer and emergencies

If someone is in need of medical care, the Camp Health Officer station is near the health form check in area. If it is a medical emergency, call 911 and direct someone to get the Camp Health Officer immediately.



Medications

If your children need their medication, parents please keep them with you and administer it to them as needed.

Emergencies and alerts

In the event of an emergency or if there is an intruder, please notify the Day Camp Director or Program Director immediately.

In case of an active shooter, call 911 immediately. Station leaders please assume leadership over the station participants and help the group get to safety. Range masters if possible, secure weapons.

In the event of a fire, contact the Day Camp Director or Program Director and call 911 and make sure to move your group safely away from the area affected. Remember to be upwind of the fire area to avoid smoke and sparks. There are several fire extinguishers on property. If there is a tsunami alert, please get to a tsunami evacuation zone. This is best done by driving away from Ke'ehi Lagoon Memorial and driving inland.

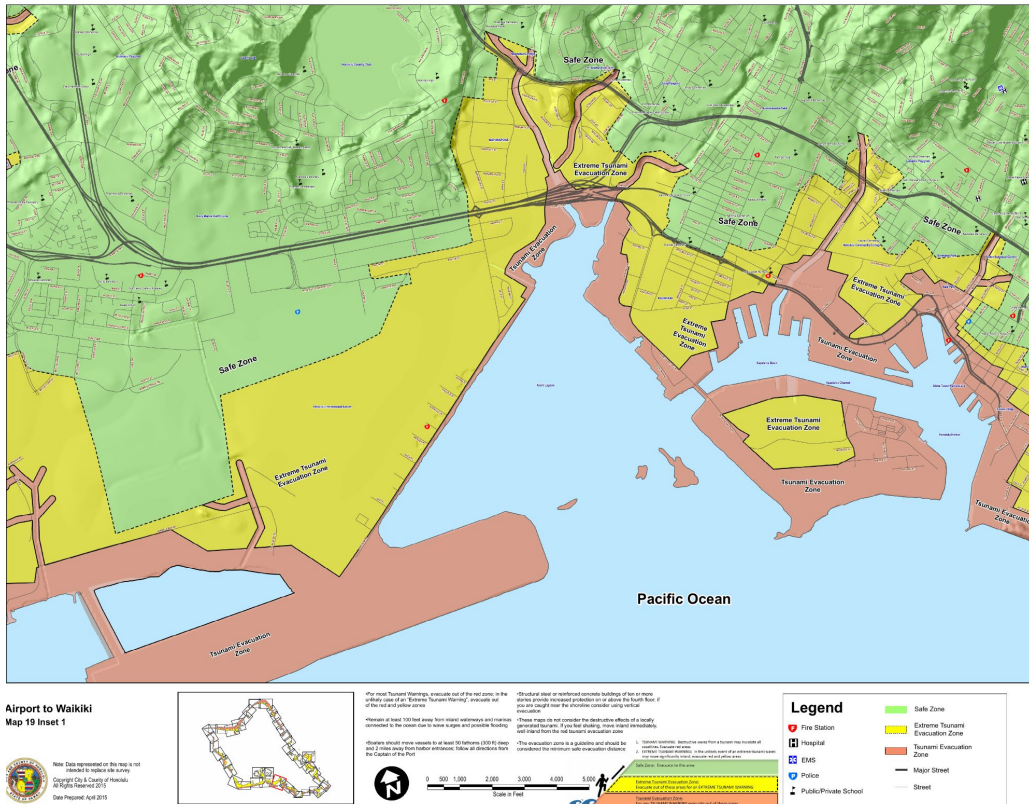
O'ahu has two Tsunami Evacuation Zones which together make up the Tsunami Hazard Area.

- **Standard (Red) Zone:** Evacuated any time there is a Tsunami Warning (Ke'ehi Lagoon Memorial). Nearest evacuation to a yellow zone is in the parking lot of the Ke'ehi Lagoon Beach Park near the light rail.
- **Extreme (Yellow) Zone:** Only evacuated if there is a Tsunami Warning due to an earthquake originating from Eastern Aleutian Islands with a magnitude 9.0 or greater

(Ref: City and County of Honolulu Tsunami Sign Project)

Scouting AmericaTM

Aloha Council



[https://static.pdc.org/tsunami/oahu/Airport to Waikiki map19 inset1.png](https://static.pdc.org/tsunami/oahu/Airport%20to%20Waikiki_map19_inset1.png)

Rules/Reminders

Your children's safety is of the utmost importance. We ask that each cub scout uses the buddy system. (Parent/their cub scout child or cub scout/cub scout) Parents please make sure your child does not go to the restroom alone.

Follow directions provided by the station leaders and den leaders. Absolutely no shooting arrows or pellets at others. Violence of any kind will not be tolerated. Everyone will need to follow rules so we stay safe and have a fun time.

No alcohol, smoking, electronic cigarettes, or illicit drugs at Day Camp. If you need to smoke/vape, there will be an area away from the youth. For the youth, no electronics allowed. No personal weapons or shooting sports equipment allowed.

Advancement opportunities

Participation in day camp helps to go towards obtaining achievements. Day camp will count as 1 of 3 Cub Scout Activities for Summertime Fun (for Tigers through AOL). Participation in the shooting sport ranges fulfills the requirements for all ranks for the archery, BB gun, and sling shot adventures.



Acknowledgments

Thank you to all the Scouting America Aloha Council professional staff, adult leaders, scouts, and volunteers whose efforts made this Cub Scout Day Camp possible. Thank you to Chaminade University and students for their wonderful microscope station! Mahalo to all of the parents who signed up their Cub Scout(s) and spent the whole weekend together at Day Camp!

And special thanks to the following units for volunteering at Day Camp!

Pack 9 Moanalua
Pack 10 Kaimuki
Pack 35 Noelani Elementary
Pack 147 Aiea
Pack 167 Ewa Beach
Pack 201 Maemae Elementary
Pack 311 Kailua
Pack 488 Newtown
Pack 564 Mililani Mauka
Troop 32 Waipio
Troop 35 Noelani Elementary
Troop 164 Mililani
Troop 223 Kailua
Troop 311 Kailua
Troop 664B Mililani
Troop 664G Mililani