

2025 BLIZZARD

Cub Scout **FEB. 21 - 23**
Information Packet

Follow the Spiders Beware of the Basilisk



February 21-23, 2025
Black Creek Scout Reservation
Scouts—\$30 Adults— \$20



*Grab your Broomstick, Wand and
your Wits!
Test Your Knowledge and Bravery.*

Bring the Whole Family out for the weekend to campout and take part in “Wizardry” activities including:

- .Campsite Decorating Contest - Shooting Sports
- .Dutch Oven Contest - BIG Campfire – Spirit Stick
- .Themed Activities - And SO MUCH MORE

All Units are encouraged to actively participate to help earn points to win the “Spirit Stick.”

DON'T FORGET TO ORDER YOUR EVENT SHIRT WHEN REGISTERING!

Limited Supply

Only \$13

Order by February 4, 2025

BSA Check In Procedures and Camp Policies to Keep Youth Safe!

- Check begins at 4:30 pm on Friday, February 21st. The gates will be locked until then.
- **No early arrivals will be checked in until 4:30 pm.**
- **No one will be allowed to enter Camp on Friday night after 9:00 PM.**
- All participants must check in at the Administration Building.
- You **MUST remain in your vehicle.**
- One Pack trailer will be allowed to be parked near the campsite, not in it.
- You will be allowed to drive to your assigned campsite. Unload your gear as quickly as possible (10-15 minutes). Then move your car to the parking area. **DO NOT** setup your tent plan. You will be holding up other families from getting their gear into the campsite.
- Please do not block the roads while you are unloading your gear.
- There will be no program on Friday night.
- **Registration fees must be paid in full! Camp staff will not be taking Registration money at check in.**
- Check-in will begin again on Saturday the 22nd at 7:30 AM and end at 10:00 AM.

No one will be allowed in camp before 7:30 AM Saturday morning.

No exceptions due to safety reasons.

- **All vehicles MUST be parked in the designated parking areas all weekend.**
- Driving in camp during check in and out is limited to 10 mph and should be slower if you are near people.
- No driving is permitted during program, plan ahead if you need to leave early.
- **Absolutely no riding in the back of trucks.**
- Leave No Trace: If you pack it in, pack it out. Please secure trash as you pack it out so it doesn't blow out.
- Use fire rings. Fires are not allowed outside of a fire ring.
- No open-toed shoes allowed.
- No use of alcohol, illegal/recreational drugs or misuse of prescription drugs.
- No firearms or fireworks allowed.
- No smoking in view of Scouts.
- No pets are allowed in camp.

Please have your medical forms (put them in a folder), a first aid kit and water in a designed place in your campsite. This is for emergencies. If someone is hurt the staff or an Adult will be able to get the information and supplies needed quickly.

Awards will be given for the following at Sunday Morning Assembly

Fill out the Entry forms (In the online Information Packet)
for each Contest.

Bring them to the Saturday morning Assembly!

Spirit Stick Contest

The Spirit Stick needs a new home until the next Cub Scout Event of 2025!
The Pack showing the most Cub Scout Spirit will be awarded the Spirit Stick to decorate
and bring back to the next Council Event.

Just because your pack may be small doesn't mean you can't win the Spirit Stick!

What staff looks for is:

- Participation in the Campsite **decoration by the youth**
- Participation in the Dutch Oven contest
- Participation in the activities
- Being present at all Assemblies
- Having a Pack/Den Cheer/Song
- Participation in campfire program (when there is a campfire)
- Practicing Leave No Trace
- Practicing Points of the Scout Law with out being told
- All-around Cub Scout Spirit!

Campsite Decoration Contest

This years Camp theme is Blizzard Wizardry.

There will be 1st, 2nd and 3rd place awards.

Turn in Entry Forms Saturday morning after assembly
on the table outside the Trading Post.

You will have until lunch time Saturday to finish decorating your campsite.
Be sure to have your Pack number displayed.

Dutch Oven Cook Off

Turn in Entry Forms Saturday morning after assembly
on the table outside the Trading Post.

Be sure to pick up a sample cup with lid.

Fill out the form completely.

Bring the Entry Form and your entry to the Dining Hall
at 6:30pm Saturday Night.

There are 2 groups:

Adult and Scout

Please prepare a soup or dessert.

The entries must be prepared and cooked in camp by the
person entering the cook off.

Good luck!!!!

The Camp theme for this weekend is “**BLIZZARD WIZARDRY**”. We
encourage everyone to dress up and have fun with the theme.

Trading Post will be open. Mrs. Grace would love to see you!

Hours for Trading Post: Friday Night 6 PM – 10:30 PM.

Saturday 8:30 AM – 7:00 PM

Camp Schedule

This camp schedule is not, set in stone. **It could change and may change.** Please be at the Assemblies so that Camp Staff can pass along any updates.

Friday – Program Schedule

4:30 – 9:00 PM	Camp opens. Check-in at the Administration Building for campsite assignment
9:30 PM	Staff and Parent meeting in Dining Hall. Only 2 representatives per Unit please.
10:30 PM	Quiet hours begin – Lights Out

Saturday -- Program Schedule

7:00 AM	Rise and Shine / Breakfast in campsites
7:30 AM	Staff Breakfast in Dining Hall & Staff Meeting Check-in opens at Administration Building.
9:30 AM	Opening Ceremonies at the flagpole in front of Dining Hall
10:00 – 12:00 AM	Day Time Activities Begin. Please move as a pack or den
12:15 – 1:30 PM	Lunch in campsites
12:30 PM	Staff Lunch in Dining Hall and Staff Meeting
2:00 PM – 5:00 PM	Day Time Activities Continue
5:15 PM	Flags retired, return to Campsites for Dinner. Practice your skit/songs for Big Campfire
5:30 PM	Staff Supper in Dining Hall & Staff Meeting
6:30 PM	Dutch Oven Cook Off Judging Starts in Dining Hall
7:45 PM	BIG Campfire at Council Campfire Ring.
10:30 PM	Quiet hours begin – Lights Out

Sunday -- Program

8:00 AM	Rise and Shine / Breakfast in campsites
8:00 AM	Staff Breakfast in Dining Hall & Staff Meeting
9:30 AM	Flag Raising / Morning Tid-Bits
9:45 AM	Chapel Service at the Flagpole / Awards
10:15 AM	Break camp and depart

Suggested Packing List for Youth and Unit

This is for both Camps in the Council

- Medical Forms (A, B1, B2)
- Tent & tent pegs/stakes
- Tarp for under Tent
- Sleeping Bags
- Air mattress, Cot or Sleeping pad
- Extra Blankets
- Pillows
- Bug Repellant
- Sunscreen
- Lantern
- Flashlight & Batteries
- Camp Chairs
- Stove and fuel or metal grate to put over campfire
- Matches/Lighter
- Canteen or water bottle
- Mess Kit (Plate, Fork, Spoon, Knife)
- Cord, rope, clothes pins
- First Aid Kit
- Fishing gear
- Fan, battery operated/extra batteries
- Pack and Den Flags
- Food, Snacks, Beverages, Coffee
- Ice Chest / Cooler w/ice
- Cookware & cooking utensils
- Hot Pads or gloves, Plastic / Paper cups, plates, utensils, bowls
- Full Uniform
- Sturdy walking shoes or boots
- Extra change of clothes
- Dry sleep clothes-you will stay warmer
- Extra socks, shoes, underwear
- Rain gear – poncho recommended
- Sweatshirt and/or Jacket
- Hat
- Towels and washcloth
- Personal items & toiletries(Baby wipes come in handy!)
- Personal medication
- Place clothing in Ziploc bags to keep dry
- Cub Scout Handbooks
- Good Attitude :)**
- Pocketknife – Only Cub scouts who have earned their Whittling Chip and are supervised by a parent are allowed to have knives. Whittling Chip must be on you***



NOTE: Leave Your Pets At Home!

Campsite Decoration Contest Entry Form

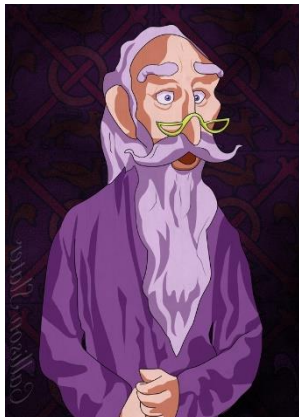
This year's camp theme is **BLIZZARD WIZARDRY**

Make sure your Pack Number is displayed on or near the campsite decorations.

Judging will begin after lunch on Saturday.

Pack Number: _____

Name: _____



Dutch Oven Cook Off Rules and Entry Forms

If you do not have an entry form, you may pick up a form after the Saturday morning assembly at the table down by the Trading Post.

Be sure to pick up a sample cup with lid.

The entries must be prepared and cooked in camp by the person entering the dish.

Good luck!!!!

There are 2 groups to be judged: Cub Scout and Adult

Judging will begin at 6:30 PM on Saturday in the Dining Hall.

Bring your sample dish in a one of the containers that is provided.

Write your name, pack number, and Entry Group on the bottom of the container.

Fill out the Entry form completely and bring with your entry.

Dutch Oven Cook Off Entry Form

Adult Entry Name: _____

Pack Number: _____ Campsite Name: _____

Name of Dish: _____

Dutch Oven Cook Off Entry Form

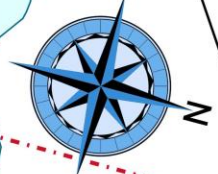
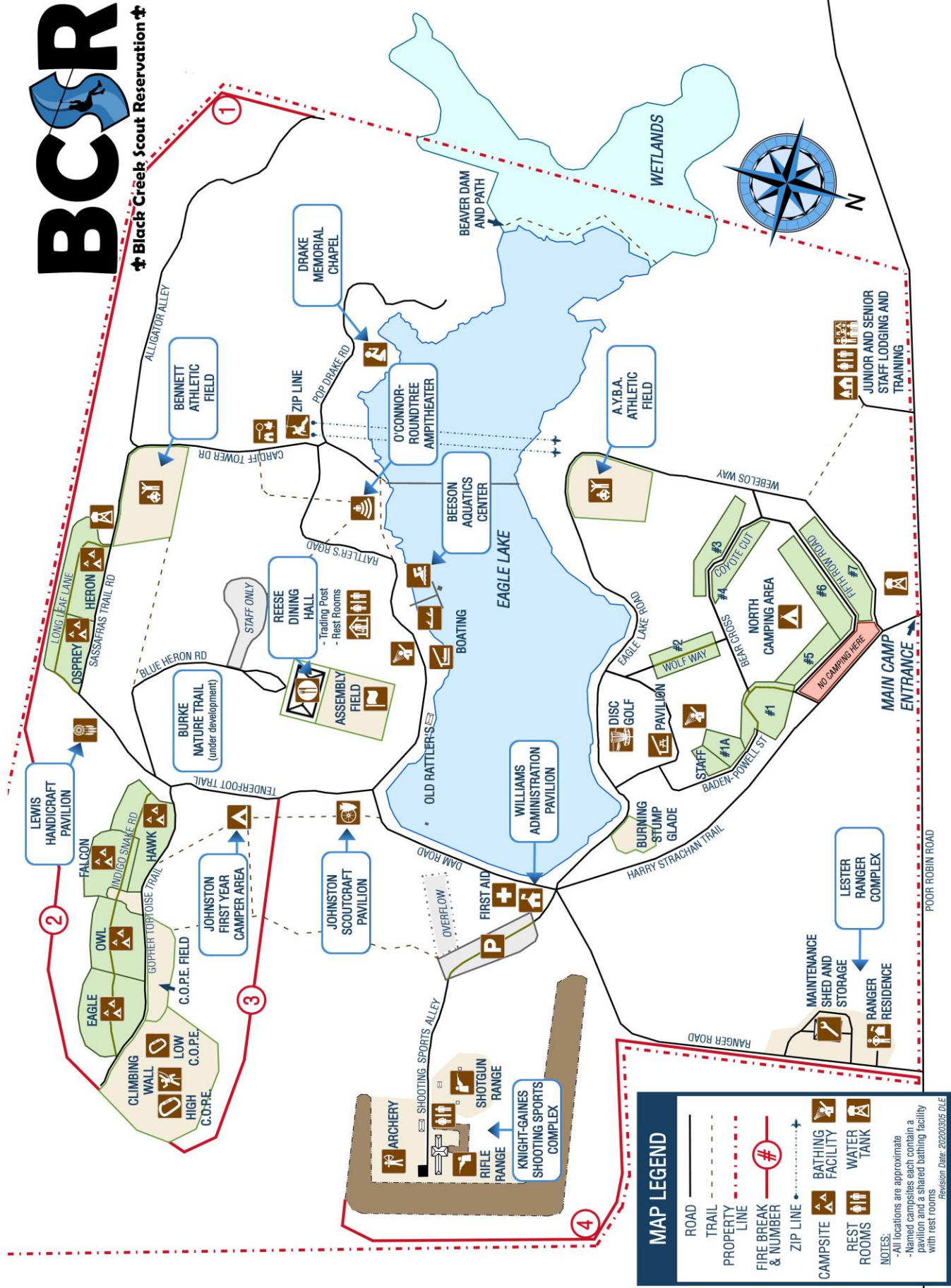
Cub Scout Entry Name: _____

Pack Number: _____ Campsite Name: _____

Name of Dish: _____

BCSR

Black Creek Scout Reservation



MAP LEGEND

- ROAD
- TRAIL
- PROPERTY LINE
- FIRE BREAK & NUMBER
- ZIP LINE
- CAMPSITE
- REST ROOMS
- BATHING FACILITY
- WATER TANK
- LESTER RANGER COMPLEX
- MAINTENANCE SHED AND STORAGE
- RANGER RESIDENCE

NOTES:
 -All locations are approximate
 -Numbered campsites each contain a pavilion and a shared bathing facility with rest rooms
 Revision Date: 20200305 DLE