



SUMMER CAMP PROGRAM GUIDE



~ Week 1- June 22-28, 2025 ~
~ Week 2- July 6-12, 2025 ~



WELCOME TO CAMP LA-NO-CHE



Parents and Leaders,

Thank you for joining us this summer at Camp La-No-Che! Our Staff is ready and waiting to provide an unparalleled camp experience to your Scouts, and we can not wait to welcome you to our home away from home. We know you will love it as much as we do! Over 75% of our Staff returns year after year, because they love making your experience the best possible!

This guide contains what you need to know about all of the great opportunities that await you this summer at Camp La-No-Che. Whether this is your first time at camp or you are returning this Summer, there are opportunities for Scouts and Adults of all interests and age levels.

Are you new to the troop?

- Check out the First Year Camper Program... "Trailblazers"!

Do you want to learn new skills and earn merit badges?

- Check out the Programs and Activities list of all we have to offer!

Looking for an adventure? Something to challenge your skills?

- Check out our Advanced Programs and choose an exciting adventure for the week! Maybe an ATV, COPE, Poseidon Odyssey or a Sailing Adventure may interest you?

Want more out of your stay with us?

- Check-out our Summer Mini Camp offerings or a Florida Attraction Tour. Both are ways to lengthen your summer experience, and make memories of a lifetime!

Are you a leader looking for adventure, training, relaxation, or a way to keep up with the office?

- We have you covered no matter your need, during your stay at Camp La-No-Che!

Use this guide to see all that we have to offer and plan your summer at Camp La-No-Che!

Adventures Await!

Mac Griffith, Program Director

Matt Ragan, Camp Director

TABLE OF CONTENTS



- 2- WELCOME TO CAMP LA-NO-CHE**
- 4- CAMP LA-NO-CHE AT A GLANCE**
- 5- OLYMPIC GAUNTLET**
- 6- PROGRAM GUIDE & COURSE CATALOG**
- 7- LEADER PROGRAMS**
- 8- LEADER ACTIVITIES**
- 9- LEADER EXPERIENCES**
- 10- PROGRAM AREAS**
- 11- ADVENTURE CAMP**
- 12- AQUATICS**
- 15- ECOLOGY**
- 16- HOBBIES/SKILLS/STEM**
- 17- LEADERSHIP**
- 18- NATIVE AMERICAN**
- 19- OUTDOOR SKILLS**
- 20- TARGET SPORTS**
- 21- TRAILBLAZERS... "FIRST YEAR CAMPERS"**
- 22- CAMP WIDE PROGRAMS/POP-UP MERIT BADGES**
- 23- UPGRADE YOUR SUMMER @ LA-NO-CHE**
- 24- PROVISIONAL CAMPING**
- 25- TRADING POST/EXPERIENCE PATCHES**
- 26- SUMMER CAMP T-SHIRTS**
- 27- FUTURE PROGRAMS**

CAMP LA-NO-CHE AT A GLANCE



This is a working draft of the Summer Camp schedule. A final schedule will be shared upon arrival to camp in your Passport to Adventure. Meals are provided from Sunday Dinner to Saturday Breakfast. If your unit needs to arrive early arrangements can be made with the camp office.

SUNDAY SCHEDULE

| Time | Event | Location |
|--------------|--|--------------------------|
| 12 PM - 3 PM | Arrival & Check In | Camp La-No-Che |
| 12 PM - 5 PM | Camp Tour/Swim Checks | Camp La-No-Che |
| 5:00 PM | SM/SPL Meeting | Williams Family Pavilion |
| 5:45 PM | Religious Service | Cappelmann Chapel |
| 6:15 PM | Evening Flag | Seneff Plaza |
| 6:30 PM | Dinner (Red/Blue Wave) | W.T. Bland Dining Hall |
| 7:45 PM | 75 th Anniversary: Belly Flop | Aquatics Center |
| 8:30 PM | Opening Program | Seneff Family Plaza |
| 8:45 PM | Staff Opening Campfire | Council Ring |
| 10:00 PM | Camp Taps/Quiet Time | Campsites |
| 11:00 PM | Lights Out | Campsites |

MONDAY - FRIDAY SCHEDULE

| Time | Mon | Tues | Wed | Thur | Fri | Location | |
|------------|-------------------------------|------|------|----------------------|--------------------|------------------------|---------------------|
| 7:30 AM | Breakfast (Red/Blue Wave) | | | | | W.T. Bland Dining Hall | |
| 8:30 AM | Morning Flag | | | | | Seneff Family Plaza | |
| 9/10/11 AM | Experience #1/2/3 | | | | | Camp Wide | |
| 12:30 PM | Lunch (Red/Blue Wave) | | | | | W.T. Bland Dining Hall | |
| 1:15 PM | Designated Troop Meeting Time | | | | | Camp Wide | |
| 2/3/4 PM | Experience #4/5/6 | | | | | Camp Wide | |
| 5:45 PM | Evening Flag | | | | | Seneff Family Plaza | |
| 6:00 PM | Dinner (Red/Blue Wave) | | | | | W.T. Bland Dining Hall | |
| 7:00 PM | Evening Troop Time Activities | | Tour | Family Night Pow Wow | Troop Led Activity | Camp Wide | |
| 7:30 PM | | | | | Opening Program | Closing Campfire | |
| 8:00 PM | | | | | | | |
| 8:30 PM | | | | | | | Seneff Family Plaza |
| 8:45 PM | | | | | | | Council Ring |
| 10:00 PM | Camp Taps /Quiet Time | | | | | Campsites | |
| 11:00 PM | Camp Lights Out | | | | | Campsites | |

SATURDAY SCHEDULE

| Time | Event | Location |
|--------------|---------------------------|------------------------|
| 7:00-8:00 AM | Breakfast (Red/Blue Wave) | W.T. Bland Dining Hall |
| 7:30-9:30 AM | Check-out | Main Camp Office |

ADULT LEADER/SPL PASSPORT SUMMER CAMP 2025- CAMP LA-NO-CHE



WELCOME TO SUMMER CAMP 2025

We hope that your stay is enjoyable and memorable. The information needed for your experience can be found within the pages of this Passport. If you should need further assistance. Please ask the closest Staff Member, and they will do their best to assist you. Welcome home to Camp La-No-Che! We hope you have a great start to your summer vacation with us!

COMMUNICATIONS:

- Email: CAMPLOCAL@CAMPLANOCHE.COM
- Website: CAMPLANOCHE.COM
- Twitter: #lanoche25
- Facebook: Camp La-No-Che
- Text: CFCEVENTS to 407-759-7390
- Phone: 352-669-8558

PASSPORT TO ADVENTURE

On your arrival to Camp La-No-Che your Summer Camp Passport will be shared. This document will detail everything you need for a memorable stay. Inside you will find program and activity schedules, area locations, operating hours, policies & procedures, safety & emergency information, and most of all your camp map. Two forms of the Passport will be available:

- Scout Passport
- Adult Leader/SPL Passport

"CELEBRATING 75 SUMMERS AT CAMP LA-NO-CHE"

75TH ANNIVERSARY GAMES



Camp La-No-Che this summer hosts the 75th Anniversary Games. Units starting in **May** will receive notice of which La-No-Che decade they will represent. This time will also allow our units to begin making adequate preparations for an epic summer!

Final plans regarding competition rules are still being finalized, and will be released in March. However, below is a sneak peak of some of the action packed fun our staff has in store for every unit, camper, and adult leaders attending Camp La-No-Che in the Summer of 2025!

Remember, only one Olympic Team will reign supreme by scoring the most points cooperatively throughout the week. The top team will go home with bragging rights, and recognition for scouting spirit, team work, creativity, and more.... Stay tuned for updates in the months ahead!

OUR 75TH ANNIVERSARY COMPETITION GUIDE COMING MARCH 2025:

CHECK BACK FOR UPDATES IN MARCH 2025

More information will be released in further Program Guide Updates, and Email Communication with the Unit Registration Contact in the months leading up to Summer Camp 2025! For the most up to date program information visit: [HTTPS://SCOUTINGEVENT.COM/083-SUMMERCAMP](https://scoutingevent.com/083-SUMMERCAMP)

"CELEBRATING 75 SUMMERS AT CAMP LA-NO-CHE"

PROGRAM GUIDE & COURSE CATALOG



MARCH 1ST- PROGRAM/ACTIVITY REGISTRATION OPENS

After a Scout/Leaders \$50 non-refundable deposit has been paid, programs and activities can be added to the schedule. *Each participant can select up to 6 (50min) programs. Some programs take more then (50min) per day.*

WHAT ARE PROGRAMS & ACTIVITIES?

These are terms to accurately describe what is offered during a week at camp.

PROGRAMS

Multi-day experiences such as: merit badge programs, ATV & Adventure, Primitive Cooking

ACTIVITIES

A one time experience during the event
(previously known as Troop Time)

ADDING PROGRAMS & ACTIVITIES:

Parents can go through the “Parent Portal” to add programs. If the unit has activated it and granted access (see pg. 8 of the Leaders Guide for detailed directions)

OR

Unit Registration Contacts can log into the unit registration, then go to the attendee tab, click on the Scout’s name, then add programs & activities to the schedule for each Scout. (Activities must be added by the Unit Registration Contact)

PROGRAM GUIDE/COURSE CATALOG

The “Program Guide” and “Course Catalog” are now live for this upcoming Summer Camp Season. Utilize both of these tools to assist in making your selections. These tools are similar yet also different, please read the below on how each can assist in making your selections easier, and provide you with the best information.

COURSE CATALOG

Accessed online through the Registration Event Page. A live updated schedule of programs and activities that will show availability and times. This is updated automatically as changes are made or other units register during the registration period. Listed here are required materials and merit badge requirements that can/can not be completed at camp listed under each program listing. Posted to the event page is also a one page PDF detailing all required materials and requirements for unit to use, and share with their Scouts.

PROGRAM GUIDE

This guide you are reading details all program and activity offerings, includes what period each program is offered, and required materials needed for each participant. This guide also includes up to date information on the camp schedule, troop competitions, family night, campfire shows, program updates, and other upcoming events at Camp La-No-Che. This will also be the location where we include details related to the Camp La-No-Che Exclusive Online Trading Post items available to pre-order.

ATTENTION

Programs and Activities are subject to change based on weather, program needs, or changes to the merit badge itself. Items listed are not guaranteed to be completed at camp. Some requirements may require outside of class time such as reports, qualifying, and/or observations.

LEADER PROGRAMS



Camp La-No-Che offers many programs for adults because lets face it, camp is a vacation from your normal everyday life. In all seriousness we understand the sacrifice every adult makes to be at camp with their Scouts. You are taking vacation time away from your family, and time away from your careers. We want to do all that we can to help make your stay enjoyable. Below are some items put in place for your own experience at a camp. Whether you are at camp to enjoy yourself, or are keeping tabs on the office when supporting your Scouts.

PROGRAMS:

There are different experiences available to adults throughout the week. Below is a list of our current offerings for this upcoming summer. Keep in mind, there may be changes to this list when registration goes live on March 1st. We encourage you to register just like our Scouts for these programs and activities, some reach capacity quickly (a complete list will be published in the Program Guide updated on January 1st). These below programs are a week long committment that you attend daily in order to complete.

| WEEK-LONG PROGRAMS | SIGN-UP | COST \$ | MIN/MAX | EXP I | EXP II | EXP III | EXP IV | EXP V | EXP VI | SUGGESTED MATERIALS | |
|--|---------|---------|---------|---------------------------------------|--------|---------|--------|-------|--------|-----------------------|--------------|
| ATV & Adventure | ONLINE | N/A | 2/8 | | | | | B | | See Adv. Camp | |
| BSA Stand Up Paddle-boarding | ONLINE | N/A | TBD | | | | A | | | Suit, Towel, Shoes | |
| Campsite Inspection Team | N/A | N/A | N/A | A | | | | | | Hat, Waterbottle | |
| Intro to Outdoor Leadership Skills | ONLINE | N/A | 6/18 | | | A | | | | Pen, Paper, Resources | |
| Mile Swim/Mile Run | ONLINE | N/A | 2/12 | A | | | | | | Suit, Towel, Shoes | |
| Night Owl Program | N/A | N/A | N/A | Monday - Friday @ 10-10:30 PM | | | | | | Water bottle | |
| Poseidon Odyssey | ONLINE | \$400 | 2/12 | | | A | | | | Suit, Towel, Shoes | |
| Primitive Cooking | ONLINE | \$100 | 2/12 | | | | | A | | Pen, Paper, Knife | |
| Scuba/Snorkeling BSA SDI Open-water Cert | ONLINE | \$475 | TBD | A (waitlist based on available spots) | | | | | | | See Aquatics |
| Snorkeling, BSA | ONLINE | \$10 | 2/10 | | | | A | | | Suit, Towel, Shoes | |
| Woodsmen | ONLINE | N/A | 2/24 | | A | | | | | Pen, Paper, Knife | |

MORE ADULT PROGRAMS COMING SOON



LEADER ACTIVITIES



Camp La-No-Che offers many daily activities for adults to engage in to share in Scouting fellowship, learn daily skills, and of course have fun! We want your stay at Camp La-No-Che to be a memorable one, be sure to check out all the fun we have in store during your stay!

ACTIVITIES:

There are different experiences available to adults throughout the week. Below is a list of our current offerings for this upcoming summer. Keep in mind, there may be changes to this list when registration goes live on March 1st. We encourage you to register just like our Scouts for these activities, some reach capacity quickly (a complete list will be published in the Program Guide updated on January 1st).

| DAILY ACTIVITIES | SIGN-UP | COST \$ | MIN/MAX | EXP I | EXP II | EXP III | EXP IV | EXP V | EXP VI | SUGGESTED MATERIALS |
|-----------------------------|---------|---------|---------|--------------------------------|--------|---------|----------|--------|-------------------|---------------------|
| Adult Leader MB | N/A | N/A | N/A | MONDAY - FRIDAY @ YOUR LEISURE | | | | | | Hat, Water Bottle |
| Advanced Clay Shoot | ONLINE | \$60 | 2/4 | | | | | FRIDAY | | Hat, Water Bottle |
| Archery Shoot | N/A | N/A | N/A | | | | TUE | | | Hat, Water Bottle |
| Dutch Oven Cooking Demo | N/A | N/A | N/A | | | WED | | | | Hat, Water Bottle |
| Native American Museum Tour | N/A | N/A | N/A | | | | MON | | | Hat, Water Bottle |
| Pen Turning & Troop Plaque | N/A | \$20 | N/A | | | | ALL WEEK | | Hat, Water Bottle | |
| Rifle Shoot (25) | N/A | N/A | N/A | | | | | WED | | Hat, Water Bottle |
| Shotgun Shoot (10) | ONLINE | \$10 | N/A | | | | | THU | | Hat, Water Bottle |
| Team Building Seminar | N/A | N/A | N/A | | | | FRI | | | Hat, Water Bottle |
| Tomahawk & Knife Throw | N/A | N/A | N/A | | | | MON | | | Hat, Water Bottle |
| Trail Hikes | N/A | N/A | N/A | Monday - Friday @ Your Leisure | | | | | | Hat, Water Bottle |

MORE ADULT ACTIVITIES COMING SOON



LEADER EXPERIENCES



NEW ADULT LEADER LOUNGE

We are proud to offer our air conditioned environment as a place for adults to relax, use our Wi-fi, or play a game of cards. Be sure to pack your laptop or tablet! Our new Adult Leader Lounge is located near the Camp Office for adults to enjoy. This space offers a quiet workspace to conduct a conference call or work quietly without interruptions. The dining hall remains an additional option that offers space to spread out and keep up with the office.



LEADER DINNER

Each troops leadership is invited to attend a dinner hosted by the Central Florida Council President and Scout Executive. You'll be able to ask questions and provide feedback on camp and learn about council programs. The dinner is held on Wednesday evening at the Williams Family Pavilion. One leader per unit is free. Additional leaders can purchase a meal during the week. Remember one adult needs to supervise Scouts at dinner.



LEADER/CAMP ADMIN COFFEE

All leaders are invited to catch up with the Camp/Program Director over coffee each morning after flag. The W.T. Bland Dinning Hall is home to our first session, but the location may change throughout the session. Please consult your SPL/Adult Leader Passport on arrival. This morning session provides an opportunity for input about your troop's Winter Camp experience at Camp La-No-Che. Program updates and reminders may also be shared. We kindly request at least one leader join us in attendance at this meeting each morning. COFFEE PROVIDED ☺



PROGRAM AREAS



ADVENTURE CAMP (P. 9)

An Advanced Scouting Program complete with adrenaline pumping programs for Scouts that like to get fast, high, and strong. Includes programs like ATV, COPE, Climbing, Static Ropes, and Zip-line.

AQUATICS (P. 10-11)

Home to the Phillip Star Waterfront that sits on our 2,352 acre Lake Norris and the Brown and Brown Aquatics Center home to 2 swimming pools that features a 70 ft water slide and 12 ft deep well, and sand-pit volleyball court.

ECOLOGY (P. 12)

The Ken Drupiewski Ecology Lodge is our home base to the southern edge of the Ocala National Forest. Experience nature first hand while not sitting in a classroom and learn about the diverse environment at Camp La-No-Che. The Ecology Lodge is full of bones, shells, specimens, and skins and will keep your Scouts coming back for more.

HOBBIES, SKILLS, STEM (P. 13)

The Hobbies, Skills and STEM area encourages Scouts to explore new hobbies, practice their skills, and innovate in STEM. Located in the Rotary Lodge and heart of camp this place is pretty “cool”. Passion and imagination collide all summer long for Scouts who call Hobbies, Skills, and STEM home.

LEADERSHIP (P. 14)

Back and better than before our Leadership area assists Scouts in their completion of Eagle Required Merit Badges. This area will be featured at both Summer Camp and Winter Camp moving forward, with rotating list of merit badges. Staffed with dedicated counselors, who welcome additional help throughout the week from unit leaders passionate about their Scouts and their journey in Scouting!

NATIVE AMERICAN (P. 15)

Journey back to a time long ago, and learn about Native American life here in Florida. Our Native American Village is home to a museum, primitive cooking chickees, pow wow ring, and Native American Trading Post. Education through reenactments, and the learning of handi-crafts takes place in this program area. Learn to make baskets, wood carvings, leather working, pottery, and sculpture.

OUTDOOR SKILLS (P. 16)

When you think of Scoutings fundamentals, you're probably thinking of offerings in this area! We help Scouts enhance those basic skills to be successful in the outdoors, while being prepared to act and take care of others no matter the emergency. Scouts always find success if they put in the time and effort with merit badges taken here.

SHOOTING SPORTS (P. 17)

Patience, self control, and being trustworthy are all tenets of this program area. Located on our Shooting Sports Trail with many programs and activities to explore. Our basic programs like Archery, Rifle, and Shotgun Shooting can be a real blast! Keep an eye out for new offerings and unique experiences like Action Archery.

TRAILBLAZER (P. 18)

A place to jump start your basic Scouting skills required for Scout, Tenderfoot, Second, and First Class ranks. Using the patrol method, Scouts are introduced to the fundamentals of being a Scout BSA member, and will leave camp with more knowledge of the fundamentals of the Scouting program.

"CELEBRATING 75 SUMMERS AT CAMP LA-NO-CHE"

ADVENTURE CAMP

[BOND BIKE BARN]



ATV & COPE ADVENTURE

Experience the ASI ATV Safety Training Course and a Low/High COPE Adventure all in one exciting program. Participants will develop their Teamwork and Rope Skills, and ride ATV's seeing parts of La-No-Che rarely seen by the average visitor to camp. Your program will consist of: 3HR ATV Experience / 3HR Low & High COPE / 3HR Static Ropes

Registrants must be at least 14 years old. Participants will be riding ATVs appropriate for their age level and body composition. All participants must have long sleeve shirts, long pants and over the ankle boots. Activities require the use of a harness, & you must have cotton shorts/pants. No swim suits, board/gym/basketball shorts, or leggings.

- Required Documents :
- (1) Hold Harmless and Rider Rules form (found on registration page)
 - (2) Completion of online ASI Course: <https://cvt.svia.org/login/index.php>

CLIMBING

Spend the session at our Climbing Tower learning and improving your climbing skills. Participants will also rappel at the Adventure Tower. Participants must be in good physical condition. Activities that require the use of a harness, you must have cotton shorts/pants. No swim suits, board/gym/basketball shorts, or leggings.

| PROGRAMS | COST \$ | MIN/ MAX | EXP I | EXP II | EXP III | EXP IV | EXP V | EXP VI | SUGGESTED MATERIALS |
|-----------------------------|---------|----------|------------|--------|---------|-----------|-------|--------|---------------------|
| ATV & Adventure (14-15) [L] | \$25 | 2 min | A (12 MAX) | | | B (6 MAX) | | | See Above |
| ATV & Adventure (16-17) [L] | \$25 | 2 min | A (6 MAX) | | | B (6 MAX) | | | See Above |
| ATV & Adventure (18) [L] | N/A | 2 min | | | | B (6 MAX) | | | See Above |
| Climbing | \$10 | 2/18 | A | | | | | | See Above |

(All Adventure Camp program fees cover the cost of supplies/materials)

An Exclusive Adventure Camp shirt is available onsite for \$20

| ACTIVITIES | COST \$ | MIN/ MAX | DAY | 7:00 PM | 7:30 PM | 8:00 PM | 8:30 PM | 9:00 PM | SIGN-UP METHOD |
|------------|---------|----------|-----|---------|---------|---------|---------|---------|--------------------|
| Climbing | \$10 | 2/12 | W | A | B | C | | | Preregister Online |

| ACTIVITIES | COST \$ | MIN/ MAX | DAY | 7:00 PM | 7:15 PM | 7:30 PM | 7:45 PM | 8:00 PM | SIGN-UP METHOD |
|------------|---------|----------|-----|---------|---------|---------|---------|---------|--------------------|
| Zip Line | \$20 | 2/12 | M/T | A | B | C | D | E | Preregister Online |

(Activities that require the use of a harness, you must have cotton shorts/pants.

No swim suits, board/gym/basketball shorts, or leggings. Zipline has a weight restriction, participants must be 100-250 pounds.)



L- LANOCHE PROGRAM
*- EAGLE MERIT BADGE

"CELEBRATING 75 SUMMERS AT CAMP LA-NO-CHE"

AQUATICS

[PHILIP STARR WATERFRONT]
[BROWN & BROWN AQUATICS CENTER]



Camp La-No-Che has a great deal to offer in terms of Aquatics Programs. Featuring experiences for beginners and advanced participants. This staff is highly knowledgeable and trained to make your week a memorable one!

| PROGRAMS | COST \$ | MIN/MAX | EXP I | EXP II | EXP III | EXP IV | EXP V | EXP VI | SUGGESTED MATERIALS |
|--------------------------------|---------|---------|-------|--------|---------|--------|-------|--------|---------------------|
| Boatswains Sailing [L] | N/A | 2/6 | | | | A | | | Suit, Towel, Shoes |
| BSA, Stand Up Paddle-boarding | N/A | 2/12 | | | | A | | | Suit, Towel, Shoes |
| Canoeing | N/A | 2/20 | | A | | | | | Suit, Towel, Shoes |
| Instructional Swim | N/A | 2/5 | A | | B | | | C | Suit, Towel, Shoes |
| Kayaking | N/A | 2/10 | | A | | | B | C | Suit, Towel, Shoes |
| Lifesaving [*] | N/A | 2/20 | | A | | | | | Suit, Towel, Shoes |
| Small Boat Sailing (Mates) [L] | N/A | 2/12 | | | | A | | | Suit, Towel, Shoes |
| Mile Swim/Mile Run | N/A | 2/10 | A | | | | | | Suit, Towel, Shoes |
| Motorboating | \$10 | 2/6 | A | B | C | | D | E | Suit, Towel, Shoes |
| Poseidon Odyssey (11-12) [L] | \$200 | 2/12 | | | A | | | | Suit, Towel, Shoes |
| Poseidon Odyssey (13+) [L] | \$200 | 2/12 | | | A | | | | Suit, Towel, Shoes |
| Snorkeling, BSA | \$10 | 2/20 | | | | A | | | Suit, Towel, Shoes |
| Swimming [*] | N/A | 2/30 | A | | B | | | C | Suit, Towel, Shoes |
| Water Sports | \$20 | 2/3 | A | B | | C | D | E | Suit, Towel, Shoes |

| ACTIVITIES | COST \$ | MIN/MAX | DAY | 7:00 PM | 7:30 PM | 8:00 PM | 8:30 PM | 9:00 PM | SIGN-UP METHOD |
|--------------------------|---------|---------|-------|-----------|---------|--------------|---------|---------|----------------|
| Canoeing | N/A | 2/20 | M/W | | A | | | | Open Program |
| Kayaking | N/A | 2/10 | M/T/W | | A | | | | Open Program |
| Sailing | N/A | 2/6 | T | | A | | | | Open Program |
| Stand-up Paddle Boarding | N/A | 2/10 | M/T/W | | A | | | | Open Program |
| Swimming | N/A | 2/80 | M/T/W | 7-7:45 PM | | 7:45-8:30 PM | | | Open Program |

SMALL BOAT SAILING MERIT BADGE (LNYC MATES)

Scouts of all ages can participate in learning the ancient skill of sailing! Scouts will learn the Small Boat Sailing Merit Badge by sailing Sunfish sailboats, which will teach scouts about the fundamentals of sailing, wind and weather conditions, and basic navigation.

LNYC BOATSWAINS

This intermediate sailing course is intended for scouts who have completed the Small Boat Sailing MB and have basic sailing knowledge. As a part of this week-long course, participants will strengthen their sailing skills learned in the Mates program, while learning basic boat and sail repair techniques, the sport of sailing, marine navigation, and culminating their skills with an overnight cruise! Participants will refresh their sailing skills Monday by sailing Sunfish sailboats, then honing their skills throughout the week on the JY-15 sailboats.

L- LANOCHE PROGRAM
*- EAGLE MERIT BADGE

AQUATICS

[POSEIDON ODYSSEY ADVENTURE]
[11-12 YEARS OF AGE]



A diverse grouping of off-camp activities has been compiled for those **11-12 years of age** to experience Florida culture during the day. In the evening they return to camp for troop time activities and fun! This list is currently in development and will be finalized as we move closer to the start of the Summer Camp Program. All transportation and meals are provided, Scouts need only bring spending money if they choose.

SCIENCE CENTER (ORLANDO)

The Orlando Science Center is a dynamic, hands-on science museum that has been inspiring curiosity and learning for over 60 years. It features interactive exhibits, live programming, and theaters that engage visitors of all ages in the wonders of science, technology, engineering, and math (STEM). Highlights include the explosive Kaboom! live show, Dr. Dare's lab, and the KidsTown exhibit.



BEACH DAY & MARINE SCIENCE CENTER EXP (DAYTONA)

The Marine Science Center in Ponce Inlet offers a unique educational experience focused on marine life conservation. Visitors can explore exhibits on sea turtle and seabird rehabilitation, participate in hands-on activities in the teaching lab, and enjoy daily presentations. The center also features a nature trail and opportunities to learn about local marine ecosystems. When done journey to the beach within walking distance for some aquatics fun and ocean exploration.



ZOO (SANFORD)

The Central Florida Zoo is a 116-acre facility that houses over 350 animals representing more than 100 species. It offers a variety of educational programs, including up-close animal encounters. The zoo also features a tropical splash pad, an aerial adventure course, and beautiful botanical gardens.



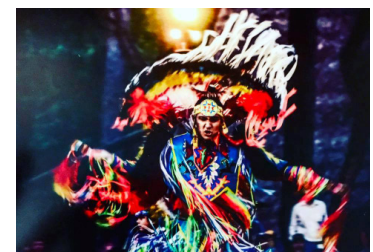
SWIMMING & BREAKFAST EXP (DELEON SPRINGS)

De Leon Springs State Park is known for its refreshing 72-degree spring waters, perfect for swimming and snorkeling. The park also offers a unique breakfast experience at the Old Spanish Sugar Mill Restaurant, where visitors can cook their own pancakes at the table. The park's rich history and natural beauty make it a popular spot for picnicking, hiking, and wildlife viewing.



NATIVE AMERICAN & AQUATICS EXP (LA-NO-CHE)

Spend a day at La-No-Che taking in the rich history of Native American life in modern day Florida. Learn from Native American educator Jim Sawgrass and experience elements of our Woodsmen & Primitive Cooking program. The remainder of the day spend at beautiful Lake Norris enjoying water activities or lounging at our Aquatics Center's two-pools during the day and enjoy our water-slide.



"CELEBRATING 75 SUMMERS AT CAMP LA-NO-CHE"

AQUATICS

[POSEIDON ODYSSEY ADVENTURE]
[13-17 YEARS OF AGE]



A diverse grouping of off-camp activities has been compiled for those **13-17 years of age** to experience Florida culture during the day. In the evening they return to camp for troop time activities and fun! This list is currently in development and will be finalized as we move closer to the start of the Summer Camp Program. All transportation and meals are provided, Scouts need only bring spending money if they choose.

RIVER TUBING EXP (ITCHNEUTUCKNEE SPRINGS)

Enjoy a relaxing and scenic float down the Ichetucknee River, known as Florida's natural lazy river. Fed by nine springs, the river's crystal-clear, blue-green waters provide a serene backdrop as you drift beneath a canopy of trees. This experience offers a perfect blend of fun and tranquility, for nature lovers



BEACH DAY & MARINE SCIENCE CENTER EXP (DAYTONA)

The Marine Science Center in Ponce Inlet offers a unique educational experience focused on marine life conservation. Visitors can explore exhibits on sea turtle and seabird rehabilitation, participate in hands-on activities in the teaching lab, and enjoy daily presentations. The center also features a nature trail and opportunities to learn about local marine ecosystems. When done journey to the beach within walking distance for some aquatics fun and ocean exploration.



CANOE & GLASS-BOTTOM BOAT EXP (SILVER SPRINGS)

This experience offers a unique opportunity to explore stunning, clear waters through canoeing and glass-bottom boats. The glass-bottom boats, a historic attraction since the 1870s, allow visitors to marvel at underwater life, ancient artifacts, and the many springs. Canoeing provides a more hands-on adventure, letting you paddle through the lush surroundings and observe wildlife up close.



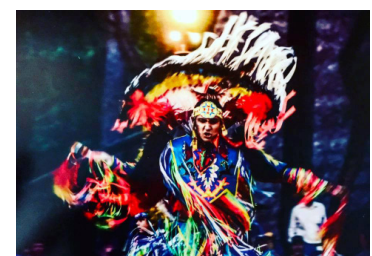
SWIMMING & BREAKFAST EXP (DELEON SPRINGS)

De Leon Springs State Park is known for its refreshing 72-degree spring waters, perfect for swimming and snorkeling. The park also offers a unique breakfast experience at the Old Spanish Sugar Mill Restaurant, where visitors can cook their own pancakes at the table. The park's rich history and natural beauty make it a popular spot for picnicking, hiking, and wildlife viewing.



NATIVE AMERICAN & AQUATICS EXP (LA-NO-CHE)

Spend a day at La-No-Che taking in the rich history of Native American life in modern day Florida. Learn from Native American educator Jim Sawgrass and experience elements of our Woodsmen & Primitive Cooking program. The remainder of the day spend at beautiful Lake Norris enjoying water activities or lounging at our Aquatics Center's two-pools during the day and enjoy our water-slide.



"CELEBRATING 75 SUMMERS AT CAMP LA-NO-CHE"

ECOLOGY

[DRUPIEWSKI LODGE]



Camp La-No-Che has a great deal to offer being located on the southeastern edge of the Ocala National Forest in terms of ecological programs. With a natural spring on camp and numerous trails, Adventures Await!

| PROGRAMS | COST \$ | MIN/MAX | EXP I | EXP II | EXP III | EXP IV | EXP V | EXP VI | SUGGESTED MATERIALS |
|-----------------------------|---------|---------|-------|--------|---------|--------|-------|--------|-----------------------|
| Animal Science | N/A | 2/12 | | | | | | A | Pen, Paper, Resources |
| Astronomy | N/A | 2/12 | | | A | | | B | Pen, Paper, Resources |
| Environmental Science [*] | N/A | 2/15 | A | | | B | | | Pen, Paper, Resources |
| Fish & Wildlife Management | N/A | 2/12 | | | A | | | | Pen, Paper, Resources |
| Fishing | N/A | 2/12 | A | | | | | | Pen, Paper, Resources |
| Oceanography | N/A | 2/12 | | | | A | | | Pen, Paper, Resources |
| Reptile and Amphibian Study | N/A | 2/12 | | A | | | B | | Pen, Paper, Resources |

| ACTIVITIES | COST \$ | MIN/MAX | DAY | 7:00 PM | 7:30 PM | 8:00 PM | 8:30 PM | 9:00 PM | SIGN-UP METHOD |
|-------------------------------------|---------|---------|-------|-----------------------------|---------|---------|---------|---------|--------------------|
| Astronomy Night | N/A | N/A | Wed | | | | A | | Open Program |
| Ecology Open House | N/A | N/A | Thur | | | A | | | Open Program |
| Fishing (Self-Guided) | N/A | N/A | M/T/W | | | A | | | Open Program |
| Snake Feeding Demonstration | N/A | N/A | Wed | A | | | | | Open Program |
| Trail: Big Stump (Staff Guided) | N/A | N/A | M/T | Hike leaves a 5:45 from Eco | | | | | Preregister Online |
| Trail: Cat Eye Red (Self-Guided) | N/A | N/A | M/T/W | | | A | | | Open Program |
| Trail: Cat Eye Blue (Self-Guided) | N/A | N/A | M/T/W | | | A | | | Open Program |
| Trail: Sulfur Springs (Self-Guided) | N/A | N/A | M/T/W | | | A | | | Open Program |
| Trail: Trapper Creek (Self-Guided) | N/A | N/A | M/T/W | | | A | | | Open Program |

BIG STUMP

Camp is home to a one of kind adventure ! Nestled just off the beaten path lies excitement and a taste of adventure, "Big Stump"! Campers are lead to the trail head and can complete a "MUDDY" adventure like no other. Hike for approximately one mile round trip, through the muck and be sure to bring a pair of shoes and clothes your willing to toss when finished. Hosted by the Ecology Area, when complete campers can purchase a patch commemorating their successful completion!

HIKER OF LA-NO-CHE

Located on the southeastern edge of the Ocala National Forest, Camp La-No-Che has several great hiking trails for Scouts and Scouter to complete throughout their stay. To earn the ability to purchase this patch participants are asked to complete at least 3 of the 5 marked trails at camp.



"CELEBRATING 75 SUMMERS AT CAMP LA-NO-CHE"

HOBBIES/SKILLS/STEM

[ROTARY CLASSROOMS]
[BURNS VOCATIONAL TRADES CENTER]



Camp La-No-Che has a growing STEM program with experienced and passionate staff interested in fostering campers love of Science, Technology, Engineering and Math! While also working to hone Scouts interests in both their hobbies and skills. These 3 distinct program areas come together to deliver an incredible long lasting experience!

| PROGRAMS | COST \$ | MIN/MAX | EXP I | EXP II | EXP III | EXP IV | EXP V | EXP VI | SUGGESTED MATERIALS |
|-----------------------------|---------|---------|-------|--------|---------|--------|-------|--------|-----------------------|
| Architecture/Drafting | N/A | 2/12 | | | | | | A | Pen, Paper, Resources |
| Automotive Maintenance | N/A | 2/12 | | | | A | | | Pen, Paper, Resources |
| Chemistry/Composite Mat. | N/A | 2/12 | A | | B | | | | Pen, Paper, Resources |
| Digital Technology/Robotics | N/A | 2/12 | | A | | B | C | | Pen, Paper, Resources |
| Inventing | N/A | 2/12 | A | | B | | | | Pen, Paper, Resources |
| Photography | N/A | 2/12 | | A | | | | B | Pen, Paper, Resources |
| Woodwork | \$20 | 2/12 | A | | | | | | Pen, Paper, Resources |

| ACTIVITIES | COST \$ | MIN/MAX | DAY | 7:00 PM | 7:30 PM | 8:00 PM | 8:30 PM | 9:00 PM | SIGN-UP METHOD |
|-------------------------|---------|---------|--------|---------------------------------|---------|---------|---------|---------|--------------------|
| Chemistry Demonstration | N/A | N/A | Mon | | A | B | | | Open Program |
| Para-cord Bracelets | \$10 | 2/12 | M/T/W | A | | B | | | Preregister Online |
| Pen Turning (Adults) | \$20 | 2/6 | M to R | Schedule @ Scoutmaster's Corner | | | | | See Area Staff |
| Wood Burning | N/A | 2/12 | M/T/W | A | | B | | | Preregister Online |



"CELEBRATING 75 SUMMERS AT CAMP LA-NO-CHE"

LEADERSHIP

[COGGINS PAVILION]



Eagle Required Merit Badges are back at Camp La-No-Che. Through unit leader feedback, and we are happy to be offering a stronger path to Eagle once again! This area will be featured at both Summer Camp, Winter Camp, and Spring Break Camp moving forward, with a rotating list of merit badges. Staffed with dedicated counselors, who welcome additional help throughout the week from unit leaders passionate about their Scouts and their journey in Scouting!

| PROGRAMS | COST \$ | MIN/MAX | EXP I | EXP II | EXP III | EXP IV | EXP V | EXP VI | SUGGESTED MATERIALS |
|-------------------------------|---------|---------|-------|--------|---------|--------|-------|--------|-----------------------|
| Citizenship in Nation* [*] | N/A | 2/15 | | | A | | | B | Pen, Paper, Resources |
| Citizenship in the World* [*] | N/A | 2/15 | A | | | B | | | Pen, Paper, Resources |
| Communication* [*] | N/A | 2/15 | | | A | | | B | Pen, Paper, Resources |
| Personal Fitness* [*] | N/A | 2/15 | | A | | | B | | Pen, Paper, Resources |
| Personal Management* [*] | N/A | 2/15 | A | | | B | | | Pen, Paper, Resources |

(*Instructors highly suggest for the benefit of all Scouts that those taking these merit badges are 13 and First Class)



L- LANOCHE PROGRAM
*- EAGLE MERIT BADGE

"CELEBRATING 75 SUMMERS AT CAMP LA-NO-CHE"

NATIVE AMERICAN

[ROTARY LODGE]
[NATIVE AMERICAN VILLAGE]



Our Native American area is growing this year by the incorporation of our Handicraft Merit Badges! Now journey to our Native American Village for one experience or stay all day and max out your schedule. With popular programs like Primitive Cooking, Woodsmen, Wilderness Survival, and Indian Lore you can stay all week in this area alone and experience programs that will last a lifetime!

| PROGRAMS | COST \$ | MIN/MAX | EXP I | EXP II | EXP III | EXP IV | EXP V | EXP VI | SUGGESTED MATERIALS |
|-----------------------------|---------|---------|-------|--------|---------|--------|-------|--------|-----------------------|
| Am. Cultures /Am. Heritage | N/A | 2/12 | A | | | B | | | Pen, Paper, Resources |
| Archeology | N/A | 2/12 | | | | | A | | Pen, Paper, Resources |
| Basketry/Textiles | \$35 | 2/12 | | A | | | B | | Pen, Paper, Resources |
| Exploration | N/A | 2/12 | A | | | B | | | Pen, Paper, Resources |
| Indian Lore | N/A | 2/12 | A | | | B | | | Pen, Paper, Resources |
| Leatherwork | \$10 | 2/12 | | | A | | | B | Pen, Paper, Knife |
| Pottery / Sculpture | \$10 | 2/12 | | A | | | B | | Pen, Paper, Resources |
| Primitive Cooking (13+) [L] | \$100 | 2/24 | | | | | A | | Pen, Paper, Knife |
| Wilderness Survival | N/A | 2/12 | A | | | | | | Pen, Paper, Knife |
| Wood Carving | \$10 | 2/12 | | | A | | | B | Pen, Paper, Resources |
| Woodsmen (13+) [L] | N/A | 2/24 | | A | | | | | Pen, Paper, Knife |

| ACTIVITIES | COST \$ | MIN/MAX | DAY | 7:00 PM | 7:30 PM | 8:00 PM | 8:30 PM | 9:00 PM | SIGN-UP METHOD |
|-----------------------------|---------|---------|-------|---------|---------|---------|---------|---------|----------------|
| Clay Model Building | N/A | N/A | M/T/W | A | | | | | Open Program |
| Man-Hunt | N/A | N/A | M/T/W | | | A | | | Open Program |
| Native American Museum Tour | N/A | N/A | M/T/W | | A | | | | Open Program |
| Native Weapons | N/A | N/A | M/T/W | | A | | | | Open Program |



L- LANOCHE PROGRAM
*- EAGLE MERIT BADGE

"CELEBRATING 75 SUMMERS AT CAMP LA-NO-CHE"

OUTDOOR SKILLS

[WILLIAMS FAMILY PAVILION]



Outdoor Skills is getting a face lift this summer with program materials, organization, and an emphasis on Scouting excellence. This program area focuses on the foundation of Scouting, and these Staff members will not disappoint. Throughout the week campers will have the ability to learn by doing and utilizing the edge method. Your Scouts will leave at the end of the week with a strong foundation to take their scouting adventures to the next level!

| PROGRAMS | COST \$ | MIN/ MAX | EXP I | EXP II | EXP III | EXP IV | EXP V | EXP VI | SUGGESTED MATERIALS |
|----------------------------|---------|----------|-------|--------|---------|--------|-------|--------|---------------------------|
| Camping [*] | N/A | 2/15 | | | | | A | | Pen, Paper, Resources |
| Cooking [*] | \$20 | 2/15 | | A | | | | | Pen, Paper, Resources |
| Emergency Preparedness [*] | N/A | 2/15 | | | | A | | B | Pen, Paper, Resources |
| First Aid [*] | N/A | 2/15 | | | A | | B | | Pen, Paper, First Aid Kit |
| Pioneering | N/A | 2/6 | A | | | | | | Pen, Paper, Resources |
| Signs, Signals, Codes | N/A | 2/12 | A | | | B | | | Pen, Paper, Resources |



L- LANOCHE PROGRAM
 *- EAGLE MERIT BADGE

"CELEBRATING 75 SUMMERS AT CAMP LA-NO-CHE"

TARGET SPORTS

[TARGET SPORTS TRAIL]



Outdoor education and firearm safety goes hand and hand, and this experienced staff will provide an outstanding first exposure to all things shooting sports. Our dedicated ranges featuring Archery, Rifle, and Shotgun can all be active simultaneously. This area features not only program time shooting during the day, but evening troop time target shooting as well!

| PROGRAMS | COST \$ | MIN/MAX | EXP I | EXP II | EXP III | EXP IV | EXP V | EXP VI | SUGGESTED MATERIALS |
|----------------------------------|---------|---------|-------|--------|---------|--------|-------|--------|-----------------------|
| Advanced Clay Shooting (13+) [L] | \$300 | 2/4 | A | | | | | | Pen, Paper, Resources |
| Archery | N/A | 2/16 | A | | | | | B | Pen, Paper, Resources |
| Rifle | N/A | 2/16 | A | | B | | C | | Pen, Paper, Resources |
| Shotgun | \$25* | 2/12 | | | A | | | | Pen, Paper, Resources |

(*Covers 100 Shots for Merit Badge, more shots can be purchased if needed to qualify)

| ACTIVITIES | COST \$ | MIN/MAX | DAY | 7:00 PM | 7:30 PM | 8:00 PM | 8:30 PM | 9:00 PM | SIGN-UP METHOD |
|--------------------------|---------|---------|-----|---------|---------|---------|---------|---------|--------------------|
| Archery Shoot | N/A | 2/24 | M/T | A | B | C | D | | Preregister Online |
| Black Powder (2 shots) | \$5 | 2/6 | W | A | | | | | Preregister Online |
| Rifle Shoot (25 shots) | \$5 | 2/24 | M/T | A | B | C | D | | Preregister Online |
| Shotgun Shoot (10 shots) | \$10 | 2/6 | W | | | A | B | C | Preregister Online |

NRA PROGRAMS

Scouts working to complete their Rifle and Shotgun Merit Badge will have the opportunity to qualify for these awards from the NRA. Work alongside our Target Sports Staff to mark your score sheets and show improvement throughout the week. At the end of the session receive your certificate and option to purchase the patch showcasing your skills with each firearm.



L- LANOCHE PROGRAM
*- EAGLE MERIT BADGE

"CELEBRATING 75 SUMMERS AT CAMP LA-NO-CHE"

TRAILBLAZERS

"FIRST YEAR CAMPER"
[WILLIAMS FAMILY PAVILION]



Camp La-No-Che is excited to welcome Scouts who are at camp for the first time, and offer a place to jump start your basic Scouting Skills required for Scout, Tenderfoot, Second, and First Class ranks. Using the patrol method, Scouts are introduced to the fundamentals of being a Scout, and will leave camp with more knowledge than they came with. How much each Scout completes is up to them, and it is possible that different Scouts may complete more requirements than others. Unit should follow up with Scouts when they return from camp to ensure their knowledge and retention of requirements completed during their program. We offer 3 programs for Scouts focusing on rank advancement.

PATHFINDER: FOR THOSE WORKING ON SCOUT AND TENDERFOOT

Planned rank requirements covered:

- Scout: 3a, 4a, 4b, 5
- Tenderfoot: 3a, 3b, 3c, 3d, 4a, 4b, 4c, 6a, 7a, 8

VOYAGER: FOR THOSE WORKING ON SECOND CLASS

Planned rank requirements covered:

- Second Class: 2a, 2b, 2c, 2d, 2f, 2g, 3a, 3b, 3c, 3d, 5a, 5b, 5c, 5d, 6a, 6b, 6c, 6d, 6e, 8a, 8b

VANGUARD: FOR THOSE WORKING ON FIRST CLASS

Planned rank requirements covered:

- First Class: 3a, 3b, 3c, 3d, 4a, 6a, 6b, 6c, 6d, 6e, 7a, 7b, 7c, 7e, 7f

| PROGRAMS | COST \$ | MIN/MAX | EXP I | EXP II | EXP III | EXP IV | EXP V | EXP VI | SUGGESTED MATERIALS |
|----------------|---------|---------|-------|--------|---------|--------|-------|--------|--------------------------|
| Pathfinder [L] | N/A | 2/20 | | | A | | | | Scoutbook, Paper, Pencil |
| Voyager [L] | N/A | 2/20 | | | | | A | | Scoutbook, Paper, Pencil |
| Vanguard [L] | N/A | 2/20 | A | | | | | | Scoutbook, Paper, Pencil |

| ACTIVITIES | COST \$ | MIN/MAX | DAY | 7:00 PM | 7:30 PM | 8:00 PM | 8:30 PM | SIGN-UP METHOD |
|---------------------------|---------|---------|------|---------|---------|---------|---------|--------------------|
| Firema'n Chit | N/A | 2/20 | Tues | A | | | | Preregister Online |
| Flag Etiquette/Retirement | N/A | 2/40 | Tues | | | A | | Preregister Online |
| Totin' Chip | N/A | 2/20 | Mon | | A | | | Preregister Online |



L- LANOCHE PROGRAM
*- EAGLE MERIT BADGE

"CELEBRATING 75 SUMMERS AT CAMP LA-NO-CHE"

CAMP-WIDE PROGRAMS



Camp takes great pride in offering additional Activities in the evening hours to enhance unit programming. These are hosted in each Program Area throughout the week, as well as in the W.T. Bland Dining Hall and Dr. Phillips Park. A complete list can be found online in February.

| ACTIVITIES | COST \$ | MIN/MAX | DAY | 7:00 PM | 7:30 PM | 8:00 PM | 8:30 PM | 9:00 PM | SIGN-UP METHOD |
|--|---------|---------|-----|---------|---------|---------|---------|---------|--------------------|
| Basketball | N/A | N/A | ALL | A | | | | | Open Program |
| Bouldering Wall | N/A | N/A | ALL | A | | | | | Open Program |
| Board Games | N/A | N/A | M/W | | | A | | | Open Program |
| Gaga Ball | N/A | N/A | ALL | A | | | | | Open Program |
| Ice Cream (by the bar) | \$4 | N/A | M/T | | A | B | C | | Preregister Online |
| Pizza (by the pie) | \$12 | N/A | M/T | | A | B | C | | Preregister Online |
| Smores (see Trading Post for purchase) | | N/A | W | A | | | | | Open Program |

POP-UP MERIT BADGES

A new experience being piloted this summer leveraging the wealth of knowledge provided by our visiting unit leaders. A survey will go out to units registered in April 2025 asking for content area experts who would be willing to teach a merit badge not already offered during traditional program times. Our camp program team will review this list of volunteers, and create a schedule of evening opportunities that will be shared in May of 2025 to our units attending camp.

Scouts can then choose to attend these Pop-Up opportunities in lieu of troop time activities, to work on these merit badges with our volunteer instructors. While our program team would love to accept every volunteer willing to instruct, we will need to be selective due to facilities, materials, and time needed for Scouts to complete. Stay tuned for future communication from camp!

UNIT LEADER: POP-UP INTEREST LINK

[FORM.JOTFORM.COM/230857444463158](https://form.jotform.com/230857444463158)

FELLOWSHIP GATHERINGS

During the Summer Camp week various gatherings will take place to share in fellowship and comraderie through past shared experiences. A designated meeting location and time will be shared on arrival for those interested to take part in learning of other stories and adventures.

- ORDER OF THE ARROW
- WOOD BADGE PARTICIPANTS
- EAGLE SCOUTS
- STAFF ALUMNI (ALL CAMPS)

"CELEBRATING 75 SUMMERS AT CAMP LA-NO-CHE"

UPGRADE YOUR SUMMER EXPERIENCE @ LA-NO-CHE



Here is your chance of a lifetime! Camp La-No-Che is proud to offer exciting tour packages for units visiting year round, especially during the summer season. Camp La-No-Che is uniquely positioned in Central Florida just hours from Disney World, Universal Studios, Islands of Adventure, Sea World, Kennedy Space Center, Daytona International Speedway, St. Augustine, Water-parks, Beaches and State Springs.

Open to all units attending camp year-round, Camp La-No-Che is your base camp to all that Central Florida has to offer. The possibilities are endless as you can choose to arrive days early, stay a days later, or you may soon realize you want to stay an extra week for a blended attraction and camp experience. Camp will work to make your program unique and memorable.

In the following pages we have shared some of our most popular options for units visiting close to home, traveling across state lines, and from around the world. In order to best serve our units attending camp from all parts of the world, and the ever changing pricing and access to parks, we ask units contact camp directly for more information on these options. The prices listed are estimates and often changing due to economic conditions. Our Camp Program Team will work with you developing a schedule that best fits your units needs while at camp and touring Florida Adventures throughout Central Florida! Our Camp La-No-Che Program Team is committed to helping make the most of your units stay, and we stand ready to assist!

EXTEND YOUR STAY AT CAMP

Lots of options exist in this area! As who doesn't want to spend more days at Camp La-No-Che. Read on for options that may work for your units plans to stay and place more in Central Florida!

3-Night/4-Day Extended Stay

The perfect amount of time to stay at camp by night, and explore area attractions by day. Camp can even accommodate special meal requests, times and needs. The average cost for this option is only **\$150.00** per person (that just \$50 per night). Contact our camp office directly to add this to your reservation, and let Camp La-No-Che handle the rest during your stay!



"CELEBRATING 75 SUMMERS AT CAMP LA-NO-CHE"

ORLANDO THEME PARKS



One of our most popular additions made by our units is Universal Studios Florida's 3-day/3-park option. With groups of 10 or more La-No-Che can help secure group rates for those visiting with us starting at **\$250.00**. This bundled with our extended stay option is a must for those wanting to get the most out of their vacation! Check out what each park has to offer below, but you don't have to take our word for it. Join us this Summer for adventure!

VOLCANO BAY:

A premier water theme park, offering a tropical paradise centered around the majestic Krakatau volcano. This park is designed to provide both relaxation and excitement, featuring a variety of attractions such as thrilling water slides, a lazy river, and wave pools. The innovative TapuTapu wearable technology enhances the experience by allowing guests to join virtual lines and interact with various elements throughout the park. The lush, island-inspired atmosphere, complete with sandy beaches and cabanas, makes it a perfect escape. A park that emphasizes convenience and guest comfort by providing a unique and immersive experience.



ISLANDS OF ADVENTURE:

A theme park that takes guests on a journey through various fantastical worlds, each with its own unique attractions and experiences. From the superhero thrills of Marvel Super Hero Island to the enchanting magic of The Wizarding World of Harry Potter, this park offers something for everyone. Visitors can explore the prehistoric wonders of Jurassic Park, encounter mythical creatures in The Lost Continent, and enjoy whimsical fun in Seuss Landing. The park is known for its cutting-edge rides and immersive environments, making it a favorite among thrill-seekers and families alike. The park's attention to detail and storytelling is evident in every corner, creating an immersive experience that transports guests into different worlds.



UNIVERSAL STUDIOS:

A theme park that brings the magic of movies and television to life with its immersive attractions and shows. Guests can step into the worlds of their favorite films and TV shows, from the wizarding wonders of Diagon Alley to the animated antics of Springfield, home of The Simpsons. The park features a mix of thrilling rides, interactive experiences, and live entertainment, making it a must-visit for movie buffs and thrill-seekers alike. Highlights include the adrenaline-pumping Hollywood Rip Ride Rockit roller coaster, the 3D excitement of Transformers: The Ride-3D, and the magical journey of Harry Potter and the Escape from Gringotts. With its blend of cutting-edge technology, immersive storytelling, and a wide range of attractions, Universal Studios provides a dynamic and engaging experience that captures the Hollywood magic.



"CELEBRATING 75 SUMMERS AT CAMP LA-NO-CHE"

TRANSPORTATION OPTIONS



CENTRAL FLORIDA AIRPORTS: ARRIVALS & DEPARTURES

Camp La-No-Che can assist in coordinating arrivals and departures from area airports (Orlando International Airport, Orlando Sanford International Airport or Daytona Beach International Airport). Whether your group is in need of a bus, van, cargo van, trailer or all the above we can assist with groups big or small!

- Van service for parties of 10-14 with luggage typically runs **\$15-\$40** per person/one-way
- Bus service for parties 36-52 with luggage typically runs **\$7-\$10** per person/one-way

Please coordinate your groups itinerary through correspondence with: CAMPLOCAL@CAMPLANO-CHE.COM. We look forward to welcoming you to Central Florida very soon on your next adventure!

ORLANDO THEME PARKS: DROP-OFF & PICK-UP

Camp La-No-Che can assist in coordinating drop-offs and pick-ups from Orlando Theme parks Whether your group is in need of a bus or van we can assist with groups big or small!

- Van service for parties of 10-14 round-trip typically runs **\$11-\$15** per person
- Bus service for parties of 36-52 round-trip typically runs **\$17-\$25** per person

Please coordinate your groups itinerary through correspondence with: CAMPLOCAL@CAMPLANO-CHE.COM. We look forward to helping you to explore Central Florida very soon on your next adventure!



"CELEBRATING 75 SUMMERS AT CAMP LA-NO-CHE"

PROVISIONAL CAMPING

[INDIVIDUAL CAMPER EXPERIENCES]



SCOUTS! If your Unit is not able to attend Summer Camp look no further than the Provisional Camper Program! Provisional offers a unique experience for Scouts to come together from different cities, councils, or even states to meet one another and have a great experience!

All programs are available to Provisional (Provo) Scouts as if they attended with their unit and we provide adult leadership to watch over them throughout their stay! The additional cost for Provo helps offset the cost for their two-deep leadership, and additional activities just for Provo Scouts.

Scouts must utilize camp provided tents as a part of the Provisional Program. This is due to the buddy system and in order to accommodate adequate space within the campsite. The Camp La-No-Che Provisional Team also registers your Scout for Troop Times prior to their arrival. A list of these Troop Times, Provo Guidelines, and Frequently Asked Questions can be found at the links below, and under attachments on the Registration Page. Thank you!



Provisional
Scout Guidelines



Provisional
Parent Guidelines



Provisional
FAQ



Provisional
Troop Time



"CELEBRATING 75 SUMMERS AT CAMP LA-NO-CHE"

JACK JENNINGS TRADING POST



The Jack Jennings Trading Post and Concession comes fully-stocked with everything you and your Scouts may need while away at camp. Be sure to stop by and stock up on La-No-Che gear!

EXPERIENCE PATCHES

In order to help units plan after leaving camp. Our Camp Office working with the Trading Post has created this below chart to assist units in planning their Courts of Honor following camp. Experiences at Camp La-No-Che vary widely with what is available for Scout recognition, along with what National BSA requires. If you have any questions after reviewing the below chart please contact camp directly we will be happy to assist you and your unit!

| EXPERIENCE | BSA CARD | CAMP CERTIFICATE | PATCH INCLUDED | TRADING POST PATCH OPTION |
|--------------------------|----------|------------------|----------------|---------------------------|
| ADVENTURE CAMP PROGRAMS | | X | | X |
| BIG STUMP | | | | X |
| FIREMA'N CHIT | X | | | X |
| HIKER OF LA-NO-CHE | | | | X |
| LNYC- SAILING | | X | | X |
| PRIMITIVE COOKING | | X | | X |
| MILE RUN | | X | | |
| MILE SWIM | X | | | X |
| NRA AWARDS | | X | | X |
| POSEIDON ODYSSEY | | X | | X |
| SNORKELING | X | | | X |
| STAND-UP PADDLE BOARDING | X | | | X |
| TOTIN' CHIP | X | | | X |
| TRAILBLAZERS | | | X | |
| WOODSMEN | | X | | X |

Don't forget to pre order a Summer Camp 2025 T-shirt or (see the next page for more information). We will have a limited quantity of Summer Camp shirts available for purchase. Don't delay if waiting until camp to make shirt purchases, as supplies are extremely limited!

See you at the Trading Post!

"CELEBRATING 75 SUMMERS AT CAMP LA-NO-CHE"

SUMMER CAMP T-SHIRTS



Camp La-No-Che offers online ordering for Summer Camp T-shirts. *Starting on April 1st your unit or individual Scout family can visit the online registration page to place an Online Trading Post order.* Several styles and options are available including: t-shirts of all types. Make sure to purchase your swag before the deadline. Orders must be placed by May 21, 2025.

Our Camp Trading Post will stock several varieties and options of Camp La-No-Che swag. ***Unfortunately the below shirt is only available as a pre-order. Please plan accordingly!***

CHECK BACK FOR
DESIGN & LINK
IN APRIL 2025

"CELEBRATING 75 SUMMERS AT CAMP LA-NO-CHE"

2ND WEEK OF SUMMER CAMPER DISCOUNT



WAS ONE WEEK NOT ENOUGH?

Camp La-No-Che has more to offer than what can be accomplished during just one week at camp! If you want to attend camp for an additional week, there is a \$25 discount to attend Provo. Adult leadership is provided for Scouts all week. Provisional campers have the same opportunity to enjoy the program as other Scouts, and even have the opportunity for some special activities.

IS YOUR TROOP LOOKING FOR MORE ADVENTURE?

Bring your troop back to Camp La-No-Che for a Second Week of Summer Camp and get a discount of \$25 per Scout for a second week full of new experiences and memories!



"CELEBRATING 75 SUMMERS AT CAMP LA-NO-CHE"



Can you survive in the wilderness? How about with an injury? What about the bitter cold or harsh heat of the environment? Would you "BE PREPARED" if called upon during your next emergency? Do you have what it takes to perform search and rescue operations for a lost hiker? These are just some of the skills you will learn at camp!



Professor Pandemonium has taken over Camp La-No-Che and challenged you to use your skills, knowledge and teamwork to solve his epic camp-wide escape room adventure. He has scattered clues and challenges throughout camp and wants to know if you have what it takes to outsmart him. The Professor is prepared to offer keepsake awards to all who emerge victorious.



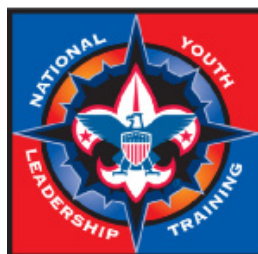
The BEAST is THE EVENT of the FALL and one you will not want to miss. Choose one tract, and spend all week-end honing your chosen skill.

Featuring a wide range of events for participants in the areas of Aquatics, Climbing and Sports. More information will be available online be sure to check out the latest and greatest and plan to attend!



Winter Camp is back at Camp La-No-Che in 24/25, and this year's theme is based off a holiday classic all Scouts can enjoy! The adventure of "Home Alone" comes to Winter Camp, and themed fun will be present in the lead up and throughout your visit to camp this holiday season!

This year will feature 3 separate epic sessions, where scouts can choose 4-5 merit badge experiences that fit Scouts needs and specific interests. Help us make sure no Scouts are left "Home Alone" make preparations today for Winter Camp!



WINTER NATIONAL YOUTH LEADERSHIP TRAINING

DECEMBER 26-31ST

National Youth Leadership Training (NYLT) is the ultimate training available in the Council! It is an exciting, action-packed course designed to provide youth participants with the leadership skills and experiences they can use at home, at school, on the job, and at their Unit level. Attendees will gain the confidence and knowledge to run the Unit program in an atmosphere that is Scouting at its best!




CLAW WKND
Feb. 7-9th
CAMP LA-NO-CHE
ACTIVITY WEEKEND
(UNIT CAMPING)



Camping prices have been reduced for this special event for our units/families throughout Central Florida. This opportunity is open to all registered members of Scouting.

Come camp with us and plan your own unit activities, or take advantage of camps program offerings! The pricing is a la carte based upon what you would like to experience.



RESERVE YOUR CAMPSITE TODAY
"NEW PROGRAMS AT CAMP"
CAMPLANOCH.COM



TNAW

AN EVENT FOR SCOUTS OF ALL AGES...

MARCH 28TH-30TH



HOSTED BY:
TIPISA LODGE
ORDER OF THE ARROW



CAMP LA-NO-CHE SUMMER CAMP

~ WK I: JUNE 22-28TH ~ WK II: JULY 6-12TH ~

“CELEBRATE LA-NO-CHE’S 75TH ANNIVERSARY WITH US”

Come join Tipisa Lodge for the biggest event of 2025! Attend as a family or with your pack to Camp La-No-Che for a fun filled weekend to immerse yourselves in Native American culture! This event has something for all!

Summer Camp is for Scouts who want to have a week-long experience at camp that will leave them with memories that last a lifetime! Scouts will be able to participate in up to six different programs, such as merit badges, or other specialty programs like COPE, SCUBA or CLAYS.

Each day features evening activities from , swimming, climbing, to our Big Stump Mud Hike! Summer 2025 features our 75th Anniversary Celebration visit our registration page to learn more about our events planned!



Academy & Trades at La-No-Che is the place for all things:

- MEDICAL - SAFETY - FITNESS -
- SPORTS - TRADES - TRAINING -

Trainings & programs for adults/youth from a diverse course listing, brought to you during 1 WEEKEND at camp!

- WILDERNESS FIRST AID - BSA LIFEGUARD -
- CUB SCOUT SHOOTING SPORTS - COPE LEVEL I -
- MERIT BADGES OFFERED AS WELL -



SUMMER NATIONAL YOUTH LEADERSHIP TRAINING

JULY 13-19TH

National Youth Leadership Training (NYLT) is the ultimate training available in the Council! It is an exciting, action-packed course designed to provide youth participants with the leadership skills and experiences they can use at home, at school, on the job, and at their Unit level. Attendees will gain the confidence and knowledge to run the Unit program in an atmosphere that is Scouting at its best!



In 2025, Camp La-No-Che is home to the event of the year! THE BEAST’S REVENGE takes center stage for all Scouts BSA and Venturers for an unforgettable weekend!

Featuring a wide range of events for participants including:

- SWIMMING
- SAILING
- CLIMBING
- RAPPELLING
- SPORTS
- AND MORE...



The Eagle Week Program is an intensive learning program conducted three weeks during the summer. Community Experts who are accomplished in the Merit Badges offered are brought to camp to conduct rigorous, but valuable instruction for Scouts working towards the rank of Eagle. Participants are housed in air-conditioned or adirondack housing throughout their stay, and all courses are conducted in air-conditioned environments.

RESERVE YOUR CAMPSITE TODAY
“NEW PROGRAMS AT CAMP”
CAMPLANOCHE.COM





Camp La-No-Che located at the Leonard and Marjorie Williams Family Scout Reservation has been providing unparalleled outdoor experiences for thousands of youth and adults annually in Central Florida and beyond since 1950. We are ready to assist you in planning your next outdoor adventure.

CONTACT US:

CAMPLOCAL@CAMPLANOCH.COM

CAMPLANOCH.COM

352.669.8558

**CAMP LA-NO-CHE
LEONARD AND MARJORIE WILLIAMS
FAMILY SCOUT RESERVATION
41991 BOY SCOUT ROAD, PAISLEY, FL 32767**