

YUKON YEARLY

2024
EDITION

SCOUTING THE LAST GREAT FRONTIER

NEWS FROM THE KLONDIKE

A Winter Scouting Adventure Awaits.

It is time to start planning for the 2024 Klondike Derby to be held February 16-18, 2024, at Camp Chawanakee in Shaver Lake, California. This is the 32nd year that the Sequoia Council volunteers will host this great event commemorating the prospectors that sought their fortune in the Klondike gold rush of the Yukon Territory.

Troops and Crews from around California are invited to participate in this winter adventure. Camp Chawanakee will be transformed into the wild Yukon where scouts will traverse the frontier, traveling from town to town testing their scout skills, competing for gold, and demonstrating the Patrol Method. Start planning now for a great Scouting adventure.

Recommended Winter Awareness Training.

Success at the Klondike Derby is all about preparation. We will do our best to help you prepare your unit for this Scouting adventure. The winter awareness training held in years past has now been made available in a series of short training videos that can be viewed at your convenience. We recommend that the unit leader, assistant unit leaders, senior youth leaders, and other interested scouts or parents review these training videos in the weeks leading up to Klondike. They contain valuable information that will help you prepare for an overnight snow camping outing. You can find all of the training videos at www.seqbsa.org/klondike-derby/.

GOLD! GOLD! GOLD! GOLD!



Trading Gold for Provisions

Unit Preparation

Preparing a Troop or Crew for an overnight snow camping adventure is no small task. It takes weeks of planning to be sure your unit is ready to take on the cold and possibly wet weather. Be prepared by planning in advance, following the Guide to Safe Scouting, and checking the type of clothing to be worn by your scouts.

It may be a good idea to plan a unit snow camping outing prior to the Klondike where your scouts can have a trial run setting up their gear in the snow while staying close to the cars. Once at Klondike, they will be hiking nearly a mile in the snow to get from the parking area to their campsite. Better to find any issues ahead of time.



Cutting Logs at the Dawson Lumber Mill

PATROLS COMPETE FOR PRECIOUS GOLD

EVENTS!

Rail Spike Drive – Visit Caribou Crossing where construction is underway on the White Pass and Yukon Railroad. Test your patrol's strength and accuracy to see if you can drive a rail spike into a wooden tie.

Log Saw – The Dawson Lumber Mill will host the log saw. Use an eight-foot long back saw to cut a tamarack log. When you're done, brand the round with the BSA emblem and keep it as a patrol souvenir.

Fire Building – Out in the wild Yukon, show that your patrol has what it takes to build a fire in the harsh conditions and that you can work as a team.

Log Lift – The pioneering spirit continues in Nome, Alaska with the knot tying competition.

Snow Cannons – New recruits are needed at Fort St. Michael. Both accuracy and distance will be needed to keep the local bears at bay with precision snow balls.

Morse Code – The telegraph office in Bennett, British Columbia is looking for new telegraph operators. See if your patrol can successfully transmit and receive messages using Morse code.

Tomahawk Throw – Head East to the village of Teslin where you can test your skill at traditional hunting. In this event patrols will see who can stick a tomahawk in the target, and closest to the center.

Snowshoe Race – With all these new prospectors seeking to strike it rich, it's a race to the gold fields! Here at Chilcoot Pass, see how quickly you can navigate a course in the snow while wearing a pair of snow shoes.

Additional events may be added. Final event list is subject to change.

THE GREAT SLED RACE

SATURDAY AFTERNOON

Starting in Whitehorse, this event will challenge your Patrol's physical endurance, teamwork, and scout skills. For this event you will need a sled capable of transporting one of your patrol members plus some essential patrol supplies.

CLAIM A TOWN

Want to run an event at the Klondike? Have an idea for a new event? New Mayors are appreciated. Claim an available town or start your own. Contact the council office for more information or register as staff if you would just like to help.

Registration Deadlines

Carrying out an event like this takes many months of planning and preparation. To help the planning committee anticipate the number of attendees and properly prepare for the event, we ask that you register early. All those registered by February 2nd, 2024 will receive a \$10.00 discount per person off the regular registration price. You can still register after that, but will be charged the full price. We recommend registering what youth and adults you can early, and you can always register additional attendees as the event gets closer. Don't over estimate though. We may not be able to offer refunds if you end up bringing less people than you registered. Registering early also ensures that you will receive any event updates that are emailed out.

Register online at www.seqbsa.org/klondike-derby/.



Driving Spikes at Caribou Crossing

TRAVELERS PREPARE FOR SNOW

UNIT PREPARATION CHECKLIST

December

- * Work on the Patrol Method
- * Add the Klondike Derby to your annual planning calendar
- * Build your sled (or tune up your old one)
- * Promote the event at unit meetings
- * Practice skills for events – develop your patrol yell
- * Have a unit meeting focusing on snow camping – Show pictures from prior Klondike Derbies

January

- * Register for the 2024 Klondike Derby
- * Plan unit meetings around snow camping
- * Take a practice trip (day trip or overnight)
- * Perfect your event skills
- * Review the Guide to Safe Scouting – Section XIII Winter Activities

- * Conduct an equipment and clothing “shakedown”

February

- * Final preparation
- * Attend the 2024 Klondike Derby February 16-18, 2024
- * Meet with the unit after the event for Start, Stop, Continue

TAKE NO OTHER “IT IS THE BEST”



The “Hickory” Hand Sled Patent filed. Constructed with our patent socket devices and rods which combine runner, knee and rive together, making the strongest and most durable sled ever made. The sled is so constructed that it can be easily closed together, making a large saving in freight rates. Experience has proven that the knee on the mortised sleds will break off at the tenants in the runner, same being too light and having no iron braces.

We also manufacture HORSE BOB SLEDs suitable for Alaska.

Our Sleds are sold by all leading outfitting houses in Seattle and Tacoma, Wash.

Honeyman, DeHart & Co. Dunham, Carrigan & Hayden Co.
Alaska Outfitters Alaska Outfitters
PORTLAND, OREGON SAN FRANCISCO, CAL.

MANUFACTURED BY
Pacific Wagon Co.
SEATTLE, WASH. SO. THIRD AND LANE STREET
Opp. N. P. Depot

There may or may not be much snow, so plan ahead to have wheels for your sled if needed. The sled race will go on all the same and we encourage your innovation.

Participant Packing List

Camping Gear

Sleeping Bag
Sleeping Pad (air or foam)
Pad to kneel or sit on
Tent (with rainfly & stakes)

Clothing to Pack

2-3 Base Layers, top & bottom
Extra Clothes
Extra Gloves
Wool Hat
Underwear
2-3 Pair Extra Socks (hiking socks)
Poncho (rain/snow gear)
Snow Pants (or spare dry pants)

Clothing to Wear

Waterproof Outer Rain Shell
Sweater or Jacket
Layered Clothing
Snow Boots/Waterproof Boots
Snow Pants
Gloves
Whistle (on person)
Sunglasses & Hat
Hiking Socks (wool works best)

Personal Items

Compass
1 Quart Water Bottle (full)
Knife
Mess Kit & Utensils
First Aid Kit
Lip Balm & Sunscreen
The Papers (Toilet Paper)
2 Small Flashlights
Large Trash Bags (to keep things dry)
Notebook & Pencil
Toiletries Kit

Cooking Gear for the Patrol

Stove & Fuel
Water Containers (filled)
Utensils
Matches/Fire Starter
Pots & Pans as needed
Clean-up Gear

Unit Items

Passport

Typical Sled Packing List

The following is a suggested list of items to pack on your sled. This does not include personal gear, which should be carried on each person's backpack.

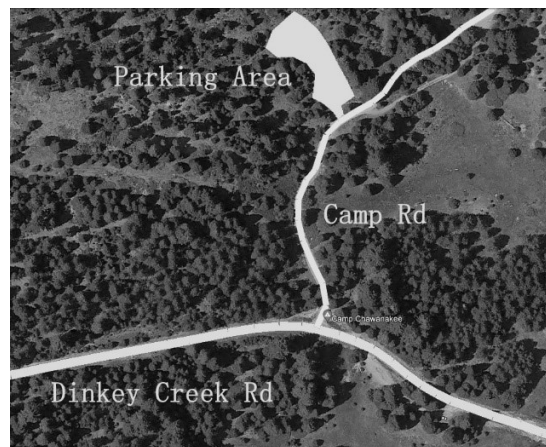
- Firepan and firewood (this will be used for the fire building event and for a campfire at your campsite)
- Flint & steel for the fire building competition
- Blanket used for emergencies and for the sled race
- Gold nugget poke bag for your gold winnings
- 2 or more garbage bags for use in camp
- Tents for your unit
- Large tarps for ground and overhead protection
- Unit first aid kit
- Equipment repair kit for use on packs and sled
- Camp stoves and fuel for cooking
- Food for your unit in animal proof containers
- Potable water for your Patrol

HUNDREDS ARRIVE IN SKAGWAY

Arrival at the Klondike Derby

We will have a parking area cleared for units to park their vehicles when they attend the Klondike Derby. The parking area will be marked on the left a few hundred feet past the gate. An unloading area will be marked near the entrance to the parking area. When you arrive, units will turn in at the camp entrance and wait in line along the camp road for your turn to unload. When you reach the unloading area, drivers can unload people and gear along the camp road, staging equipment in piles before proceeding to the parking area. We ask that you unload quickly so you can move your vehicle out of the way for the next in line to unload.

We will do our best to keep the road and parking area plowed, but be prepared if it snows at Klondike. You may need a shovel to dig out your vehicle and an ice scraper for your windshield. Leaving your wiper blades up will prevent them from freezing to the windshield.



**Roads will be cleared, but could still be icy.
Tire chains are required for all vehicles!
Trucks and SUVs are recommended for
transporting gear. Trailers are not advised.**

Carpool! Carpool! Carpool!

Parking is always a challenge. We will have limited parking available if there is snow on the ground. Please carpool. We need the space. Also, have your unit fully dressed and ready to unload before you reach the unloading area. We recommend a stop in Shaver Lake to get clothing on and gear ready.

Safety First Guideline

On Friday night, a check-in post will be near the start of the trail into camp. This is a safety control point to prevent lost scouts or groups. The top youth leader and an adult must check your unit in to receive your information packet. You will need your wilderness passport that we email you ahead of time to check in. Units should stay together when hiking into camp.

Stake Your Claim

You will be assigned a campsite at check-in. There may be more than one unit assigned to a campsite so please keep your unit to a reasonable area when setting up camp. Restrooms will be open and available in the camping area and along the events trail on Saturday. All trash must be deposited in the dumpsters behind the dining hall or packed out. No garbage may be left in the campsites.

Mushing into Camp is Part of the Experience

Scouts and scouters must hike into and out of camp, packing all their personal gear and pulling patrol gear on sleds. Note to the wise, "Don't overload your sled." It makes moving the sled much more difficult. Unit leaders watch your scouts. Don't allow your scouts to overheat by carrying too big a personal load and straining to pull an overloaded sled. Hike together on the trail, and always use the buddy system.

*Scouts with disabilities who may need
transportation assistance can call the Scout
Office and we will try to provide accommodations.*

Units are required to practice "Leave No Trace" and to pack only that which is necessary for the trip. Instead of packing in bulky and heavy ice chests, we suggest putting food in smaller critter-safe containers to save space and weight. While campfires are great, they do not provide as much warmth as a well-fed scout. So instead of firewood, bring plenty of food to keep your personal internal heaters burning warm.