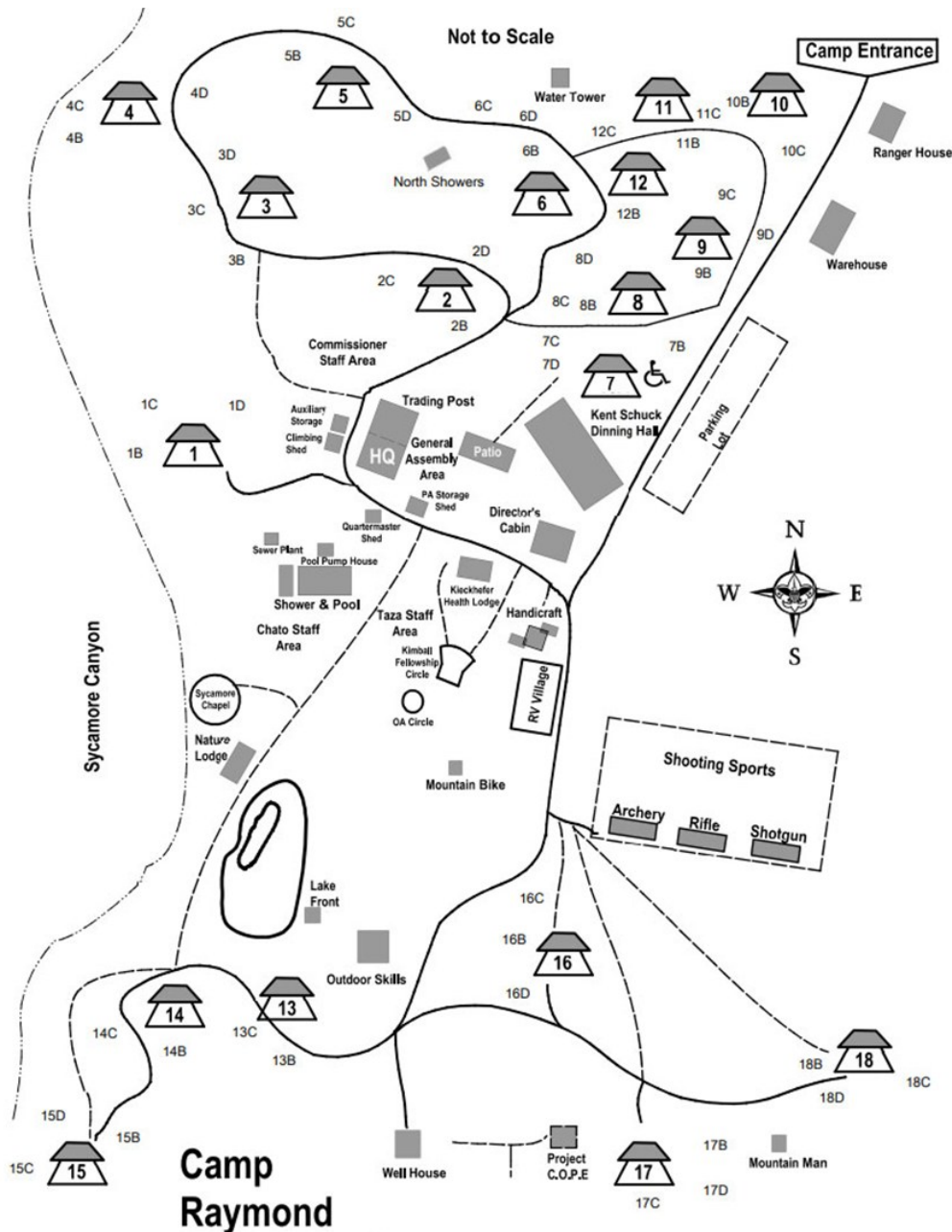




# Welcome To Camp Kaibab

## LEI'D BACK LU-WOW

PLEASE NOTE SOME OF THE CAMPSITES ARE SHARED. IF YOU SET UP AT THE WRONG CAMPSITE, YOU WILL HAVE TO MOVE TO THE CORRECT CAMPSITE.



## 2025 CAMPING ASSIGNMENTS

### Campsite #2

Pack 10 [2]  
Pack 194 [3]  
Pack 247 [3]  
Pack 735 [6]  
Pack 787 [4]  
Pack 919 [2]

### Campsite #5

Pack 7031 [21]

### Campsite #6

Pack 105 [10]  
Pack 682 [5]  
Pack 7036 [5]

### Campsite #7

Pack 324 [33]

### Campsite #8

Pack 555 [23]

### Campsite #9

Pack 618 [22]

### Campsite #10

Pack 88 [56]

### Campsite #11

Pack 7006 [17]

### Campsite #12

Pack 278 [16]

### Campsite #16

Pack 64 [30]

### Campsite #17

Pack 7140 [22]

[# of Campers]

### Vehicles at Campsite for Loading/Unloading Only

- Speed limit is 5 mph in camp.
- Bring your car to the campsite only when ready to unload/load.
- Cars must be parked in the main parking lot and cannot stay at the campsite.
- Please back-in to your parking spot, to easily depart if we had to evacuate.

### Campsite Campfires

- Only Propane campfires are allowed at the campsites.

### Campsite Clean-Up

- Pick-up all trash in the campsite and take trash to the dining hall dumpster or take home with you.
- Place trash can upside down on the table under the Ramada.

### Check-In

- Check-In starts Friday evening at 6 p.m. on the Dining Hall Back Porch.

### Check-Out

- When leaving the camp, please check-out on the Dining Hall Back Porch.
- If you should need to check-out during the night, there is a check-out binder on the table on the Dining Hall Back Porch.