

Safari Camp



**2025 R-C Scout Ranch
Family Camp
Parents' Guide**



Welcome to the Jungle

Let's Go On Safari!

Get ready for an exciting jungle expedition for the entire family at R-C Scout Ranch!

Safari Camp is open to all family members. We welcome all youth, siblings, parents, grandparents and relatives. We even have a Tot Lot for the smallest family members.

Your family can explore Safari Camp and experience fun and interactive activities. Enjoy the expedition and encounter the unique aspects of the jungle.



Tips For Your Jungle Expedition

We recommend registering early. When registering please be sure to complete all the registration questions to let us know important information on all the travelers in your family. Safari updates will be on the GCC Calendar / Registration site on the Event Details page.

Jungle Accommodations

You can bring your tent, OR you can rent a rustic tent, family tent or cabin – it's your choice. You can learn more about what makes R-C Scout Ranch Family Camp special and all your options in our easy-to-follow Parent Guide. We look forward to seeing you in the great outdoors!

Expedition Guides – Your Questions

We are here to guide you on your expedition. If you have questions, please contact us at GCC.Program@GrandCanyonBSA.org or call us at (602) 955-7747.

Jennifer Hess
Camp Director

Karen Albers
Program Director

Craig Burkholder
R-C Scout Camp Ranger



BSA MISSION STATEMENT

The mission of the Boy Scouts of America is to prepare young people to make ethical and moral choices over their lifetimes by instilling in them the values of the Scout Oath and Law.

GRAND CANYON COUNCIL MISSION STATEMENT

The mission of the Grand Canyon Council camping program is to provide each Scout with a memorable and challenging outdoor experience. The Grand Canyon Council enriches the fundamentals of Scouting through unique opportunities for leadership and educational growth. All programs and activities will be guided by the principles of the Scout Oath and Law.

The Grand Canyon Council is an equal opportunity organization that does not discriminate on the basis of sex, color, race, creed, or religion.

Safari Camp Information



Table of Contents

Welcome to R-C Scout Ranch	1
Safari Camp for Families	1
Tot Lot.....	1
Safari Camp Registration.....	1
Horse Experience Options.....	2
Lodging Options	2
▪ Arrive a Day Early	2
▪ Lodging Rental Options.....	3
○ Rent a Rustic Tent	3
○ Rent a Family Tent.....	3
○ Rent a Cabin	3
Camp Shirts.....	3
Payment Plan	3
Early Camp Rate	3
Regular Camp Rate	4
Last Chance for Camp.....	4
Refund Policy	4
Camperships	4
BSA Annual Health and Medical Record (<i>Required</i>).....	5
Arrival	5
Campsite Assignments	5
Meals / Dietary Needs	5
Health Lodge / Headquarters	6
Camper Care – Drinking Water	6
Camper Care – Washing Hands	6
Scout Uniform / Camp Attire	6
Lost & Found.....	6
Leaving Camp / Check-Out	7
Trading Post	7
Safari Camp Activities.....	7
Safari Camp Schedule.....	8
Caring For Your Campsite	9
Wildlife Safety.....	9
Items Not To Bring	10
Items Not Allowed.....	10
Directions to R-C Scout Ranch.....	11
R-C Scout Ranch Map.....	12

Welcome to the Jungle



Welcome to R-C Scout Ranch

Welcome to the breathtaking R-C Scout Ranch, nestled along the scenic Christopher Creek and surrounded by the awe-inspiring beauty of one of the world's largest Ponderosa Pine forests. With nearly 80 years of rich Scouting tradition, we extend our warmest welcome to you and your family.

We want to thank you for taking the time to explore the official 2025 Parents' Guide, a comprehensive resource providing essential information to help you plan and prepare for an unforgettable summer camp experience. We strongly encourage all adults attending camp to read this guide in its entirety. For your convenience, the latest version of this document is always available at [2025 Family Camp Registration](#).

Safari Camp for Families

The entire family is welcome at Safari Camp – cub scouts, siblings, parents, grandparents, cousins or any other relative. At Safari Camp, families select the activities they would like to attend. Some of the activities your children may need your assistance.

Families stay together whether camping in their own tent or taking advantage of the many options available - renting a cabin, rustic tent or deluxe family tent.

Tot Lot

For siblings that are potty trained and under five, they can be checked into the Tot Lot while the family participates in activities. The Tot Lot is open during morning and afternoon activities. Toddlers must be potty trained, and their special wristband will get them into Tot Lot.

Safari Camp Registration

Please be sure to fill out the entire registration form with your contact information, Pack number, participant information, sibling or rank information, dietary needs and special needs.

2025 Family Camp Registration

We have three sessions, and each session is three days, two nights of camping and includes seven meals. Two sessions are on the weekend and one during the week. In the Spring, you will receive an email inviting you to register for your preferred activities.

- Expedition 1 – **Weekend Session** | Friday, June 6 through Sunday, June 8
- Expedition 2 – **Weekday Session** | Tuesday, June 10 through Thursday, June 12
- Expedition 3 – **Weekend Session** | Friday, June 13 through Sunday, June 15

Within the family registration, youth must be accompanied by at least one parent or an adult family member (over 21 years of age). All family members must be registered participants. Babies/Toddlers (4 and under) must be registered participants and do not pay camp fees.

	Early Registration <i>Ends February 5, 2025</i>	Regular Registration	Late Registration <i>Starts May 8, 2025</i>
Weekend Session	\$210	\$225	\$255
Weekday Session	\$180	\$195	\$225

Safari Camp registration closes Wednesday, May 21, 2025.

Safari Camp Options



Horse Experience Options

Enjoy the outdoors with an amazing horse experience. We encourage participants to sign up during online registration as there is limited availability. During registration, please select only 9 safari camp activities, leaving a time slot available for your horse experience.

❖ **Horse Trail Ride**

..... \$30 During Online Registration Per Rider/ \$35 at Camp Per Rider *(if available)*
(Minimum Age - Second Grade or Wolf Rank for the 2025-2026 school year)

❖ **Horse Led Ride**

Accompanied by an Adult \$15 during Online Registration / \$20 at Camp *(if available)*
(Kindergarten/First Grade – Lion/Tiger Rank for the 2025-2026 school year)

For the safety of our campers and our horses, please remember:

- To participate, all riders (youth and adult) must have a waiver. Youth must have a completed waiver signed by their parents.
- Youth (Minimum Age – Second Grade or Wolf Rank for the 2025-2026 school year) go on a **Horse Trail Ride** where they ride the horse on their own.
- Young youth (Kindergarten/First Grade – Lion/Tiger Rank for the 2025-2026 school year) are welcome to experience a **Horse Led Ride** with an accompanying adult. The adult walks with the horse while the youth is on the horse.
- We follow the stables standard of a 220 lb. maximum weight limit for our riders. The safety of our riders and the well-being of our horses is always our priority. A variety of horses are brought to R-C each summer with the main focus of youth riders. During each trail ride, depending on the size of the adults and availability of the horses will determine whether a horse is available for an adult.
- Helmets are provided and required for all riders.
- Long pants (preferably jeans) are required.
- Closed-toed shoes (tennis shoes work the best) are required. Crocs and sandals are not considered close-toed shoes. We do not suggest hiking boots as they tend to be bulky and are challenging to get them in and out of the stirrups. Steel toed boots are not allowed.
- Please be sure to be on time for your horse ride. There is limited availability, and we will not be able to reschedule the ride.
- The horses are chosen by the Equestrian Director for size and temperament to suit the rider.
- If we experience bad weather or there are safety concerns, the rides may need to be cancelled.

Lodging Options

- Arrive a Day Early
You can join us the day before your session starts. The early arrival fee is \$10 per person. You can check in any time **after 4 p.m.** There are no meals offered that evening so please plan accordingly. The next day enjoy breakfast in the morning and relax until camp orientation at 11 a.m.

About Camp



- Lodging Rental Options
Campers bring their own tents, or we have several options for your family.
 - Rent a Rustic Tent
 - Camp Rustic Tent Fee \$30
 - Canvas Tent (7' x 9') with a platform.
 - Sleeps two with 2 cots.
 - Bring your own bedding – sleeping bag, pillow, sheets, blankets.
 - Be sure to bring a lantern / flashlight.
 - Rent a Family Tent
 - Camp Family Tent Fee \$100
 - Canvas Tent (12' x 12') with a platform and a porch with chairs.
 - Queen bed, 2 cots, side table & light.
 - Family tent can accommodate your playpen.
 - Bring your own bedding – sleeping bag, pillow, sheets, blankets.
 - Be sure to bring a flashlight for nighttime activities.
 - Rent a Cabin
 - Camp Cabin Fee \$150
 - Queen bed and two bunk bed sets (a total of 4 twin beds).
 - Table and chairs.
 - Cabin has electricity, heating and air.
 - Cabin can accommodate additional youth with add-on cot (*no fee*).
 - Cabin can accommodate your playpen.
 - Bring your own bedding – sleeping bag, pillow, sheets, blankets.
 - Be sure to bring a flashlight for nighttime activities.
 - Bathrooms and Showers available at the Shower House.

Camp T-Shirt

Each camper who registers by **Wednesday, February 5, 2025 – 11:59 p.m.**, will receive a free camp t-shirt. If you missed the free camp t-shirt or would like extra t-shirts, you can order t-shirts while registering or by returning to your original registration by **Wednesday, May 7, 2025 – 11:59 p.m.** Be sure to include the size needed. There will also be a limited number of camp t-shirts in the Trading Post.

Payment Plan

Early Camp Rate

Register by Wednesday, February 5, 2025, for Early Camp Rate:

- \$50 Deposit per person
- Free Camp T-Shirt for Youth 5+ and Adults
- \$75 Payment per person due by Wednesday, April 2, 2025
Note: Payment required to keep your Early Camp Rate.
- Final Payment due by Wednesday, May 7, 2025
- Late Fee starts per person on Thursday, May 8, 2025, for registrations with unpaid balance.

About Camp



Regular Camp Rate

Register on Thursday, February 6 through May 7, 2025, for Regular Camp Rate:

- \$125 Deposit per person.
- Final Payment due by Wednesday, May 7, 2025
Each participant must be paid in full by Wednesday, May 7, 2025
- Late Fee of \$30 per person starts on May 8, 2025 for registrations with unpaid balance.

Last Chance for Camp

Register on Thursday, May 8 through Wednesday, May 21, 2025, for Last Chance for Camp:

- Entire Camp Fee due per person at registration.
- Registration closes on Wednesday, May 21, 2025

Payments are due by 11:59 p.m. on the “by date”.

Refund Policy

It is important to remember that all camp fees are nonrefundable at each payment stage. In the case of death of an immediate family member, sickness, or injury prior to attending camp, or military transfer, we will give a partial refund when verified by a physician, military commander, or such official. Reasons such as vacation schedule, summer school, and last-minute changes of mind are not acceptable reasons for refunds.

Participants that leave camp during the session, for any reason, will not receive a refund. This is to help our council camps provide the very best program, since we sign contracts with our staff and vendors long before your family arrives on the property. **All refund requests must go through the camp registrar. The staff at camp are not authorized to make refund decisions.**

Camperships

Campership applications will open on December 1, 2024. Please submit your application early to increase your likeliness of being awarded a campership. A limited number of camperships are available to help Cub Scouts in need of financial assistance to attend any Grand Canyon BSA programs including, but not limited to, R-C Family Camp, R-C Horse Camp and Raymond Adventure Camp. We also now offer Camperships for out-of-council youth.

Follow this link to the Campership form on the Grand Canyon Council Support Center:

<https://247scouting.com/forms/010-financialassistancewww.grandcanyonbsa.org/forms/>.

The deadline to apply for campership is Wednesday, April 2, 2025.

Campership will be applied to the registration balance once approved. Please note, if a Scout does not attend the program a campership was awarded for, then they will forfeit their personal contributions. Additionally, camperships are awarded for a specific program and cannot be transferred to other programs.

About Camp



BSA Annual Health and Medical Record (Required)

The event **does not** require a medical professional signature on the Annual Health and Medical form.

On arrival at camp, all campers must submit a BSA Annual Health and Medical Record – Part A, B1 & B2 with immunization records written on B2 or attached and a copy of the family insurance card. The health form used for all scouting events is on the BSA website at:

[Annual Health and Medical Record | Scouting America \(scouting.org\)](http://www.scouting.org/health-and-safety/ahmr/)
www.scouting.org/health-and-safety/ahmr/

This record is provided as a fillable PDF, and members are encouraged to fill it out on their computer, then print the record (rather than printing the record and filling it out by hand). Doing this will improve the readability and accuracy of each member's medical information.

While you may have other types of health forms, the only form accepted at camp is the BSA Annual Health and Medical Record.

Arrival

For a few days, this will be your home away from home and we want to make sure you enjoy your time at camp.

Check-in is from 9:00 a.m. to 10:30 a.m. on Friday (Weekend Session) or Tuesday (Weekday Session). Upon your arrival, you will be greeted by camp staff, and you will receive directions on your check-in procedures. Late arrivals must notify camp management at Headquarters/Health Lodge to receive check-in instructions.

At Check-In you will receive

- ❖ Your Campsite Assignment
- ❖ Your Camp Safari Family Schedule
- ❖ R-C Scout Ranch Map
- ❖ Wristband for each Camper for Meals
- ❖ Meals – Food Allergy / Dietary Restrictions Wristband (*if applicable*)



Campsite Assignments

During the registration process please include your Pack number or indicate the families you would like to camp with during summer camp. We will try to accommodate your camping requests. Upon arrival at camp, you will be given your campsite assignment.

Meals / Dietary Needs

All meals are provided in our camp dining hall starting with lunch on day one and all campsites have drinking water. Additional snacks, treats and drinks are available for purchase in the Trading Post.

Campers with special dietary needs, including allergies, must be noted during the online registration process so the proper accommodation can be made. You will receive your food allergy / dietary restrictions wristband at check-in.

About Camp



Health Lodge / Headquarters

The Camp Health Lodge is staffed 24 hours a day by qualified medical personnel. For insurance purposes and for the health and safety of all participants, all accidents and illnesses, no matter how minor, must be reported to the Health Lodge and recorded. Arrangements have been made with the local medical services to handle any medical emergencies.

Camper Care – Drinking Water

R-C Scout Ranch has an elevation of over 5,000'. It is important that everyone **drinks lots of water** each day and stays hydrated. All campsites have drinking water / water jugs as well as water in the dining hall.

Camper Care – Washing Hands

It's vital for every camper to wash their hands regularly. All participants are required to wash their hands before meals. We strongly encourage everyone to utilize our centralized hand washing station behind the dining hall.

Latrines / Bathrooms / Showers

Latrines are located in or next to campsites as well as by the field, cabin 5, stables and the parking lot. The latrines are stocked with toilet paper. If they run out of toilet paper, please notify Headquarters. Campers need to keep latrine seats down. Please do not throw trash or items into the latrines, this causes problems when pumping out and cleaning the latrines.

There are also flushing bathrooms next to the entrance to the dining hall as well as in the Shower House.

Scout Uniform / Camp Attire

For Cub Scouts, the official Scout uniform is encouraged to be worn for evening flag ceremonies, evening meals and campfire. The full field uniform consists of a Scout shirt, Scout belt, Scout pants or shorts with Scout socks. Cub Scouts wear the neckerchief for their den – Tigers, Wolf, Bear, Webelos and Arrow of Light, and they can wear their den hat too.

During the day, a Scout t-shirt and Scouts shorts or pants are great. For non-BSA members, we ask that attire be family appropriate and conservative.

Lost & Found

Prior to arriving at camp, please be sure to clearly mark all personal items with your first and last name. This will help us return items to their owners prior to your departure. Lost and found is located at the Health Lodge / Headquarters. Any items left at camp will be kept for two more weeks and then donated to local charities.

About Camp



Leaving Camp / Check-Out

Any time you would like to leave camp, please be sure to check-out at Health Lodge / Headquarters (24 Hour Staffing). It is important we know when you are gone.

At the end of camp, check-out is after the final morning scheduled activities. The check-out time for all families is by 3:00 p.m. If you need a special check-out time, please schedule in Headquarters.

Please be sure to check-out at Headquarters to pick-up your medical forms.

Trading Post

R-C has a Trading Post filled with clothing, souvenirs, camp essentials, snacks, drinks, and treats. If you forgot anything from home, check out the Trading Post. We have a lot of items to help you with those forgotten items.

Safari Camp Activities

Camp will be filled with fun activities with ten different activities that families can enjoy. Those activities will include cub scout favorites including Archery, BBs, Crowddading, and much more. Information on Camp Activities will be on the GCC Calendar Event Details page as an attachment.

Safari Camp Schedule



Safari Camp Schedule

Start Time	Stop Time	DAY ONE	DAY TWO	DAY THREE
6:30 a.m.		Camp Closed	Reveille 6:30 a.m.	Reveille 6:30 a.m.
7:15 a.m.	7:30 a.m.		Flag Ceremony	Flag Ceremony
7:30 a.m.	8:30 a.m.		BREAKFAST	BREAKFAST
8:30 a.m.	9:00 a.m.		Family Time - 30 Minutes	Family Time - 30 Minutes
9:00 a.m.	10:00 a.m.	Check In	D 9:00 - 10:00	I 9:00 - 10:00
10:00 a.m.	10:15 a.m.	Camp Setup	Transition - 15 Minutes	Transition - 15 Minutes
10:15 a.m.	11:15 a.m.	Parent Orientation 11:00 a.m.	E 10:15 - 11:15	J 10:15 - 11:15
11:15 a.m.	11:30 a.m.		Transition - 15 Minutes	Transition - 15 Minutes
11:30 a.m.	12:30 p.m.	LUNCH	LUNCH	LUNCH
12:30 p.m.	1:00 p.m.	Family Time - 30 Minutes	Family Time - 30 Minutes	Pack Up & Check Out by 3:00 p.m.
1:00 p.m.	2:00 p.m.	A 1:00 - 2:00	F 1:00 - 2:00	
2:00 p.m.	2:15 p.m.	Transition - 15 Minutes	Transition - 15 Minutes	
2:15 p.m.	3:15 p.m.	B 2:15 - 3:15	G 2:15 - 3:15	
3:15 p.m.	3:30 p.m.	Transition - 15 Minutes	Transition - 15 Minutes	Camp Closed
3:30 p.m.	4:30 p.m.	C 3:30 - 4:30	H 3:30 - 4:30	
4:30 p.m.	5:00 p.m.	Family Time - 30 Minutes	Family Time - 30 Minutes	
5:00 p.m.	5:15 p.m.	Flag Ceremony	Flag Ceremony	
5:15 p.m.	6:15 p.m.	DINNER	DINNER	
6:15 p.m.	6:45 p.m.	Family Time - 30 Minutes	Family Time - 30 Minutes	
6:45 p.m.		Evening Activity	Campfire	
10:00 p.m.		Lights Out	Lights Out	



Safari Camp offers optional Horse experience with Trail Ride and Horse Led Ride with additional fees. Please see page 2 for details and rider requirements.

The Great Outdoors



Caring For Your Campsite

By taking care of your campsite, it will help us to take care of the camp.

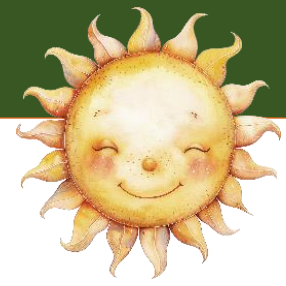
- No Litter in campsite or camp. All trash in trashcans.
- Ground cover (pine needles and leaves) removed only around fire areas.
- Please do not cut or damage the trees or plants at camp.
- Do not use the sinks to rinse food out as it can clog the drains.
- Hammocks must use straps that shield trees from abrasion.

Wildlife Safety

Campers have an opportunity to observe many types of wildlife that includes deer, bats, raccoons, birds, skunks, turkey, snakes, coyotes, and amphibians. It is wise to remember that these animals are the permanent residents of the backcountry. Please make sure all campers remember to:

- ❖ Treat all animals with respect and observe from a distance.
- ❖ Do not follow, feed, tease or handle wildlife.
- ❖ Store all food in a secure place: personal vehicle, bear proof storage container, cooler that is strapped shut or 5-gallon bucket with screw on lid.
If you store food in your tent, in a bag or backpack, the critters will find the food and chew through the bags to get to the food.
- ❖ Keep your campsite clean! All trash should be removed from your campsite or secured each time you leave the campsite.
- ❖ If you decide to cook at your campsite, clean up immediately after the meal and pour your grey water (strained to remove food particles) into a nearby sink and rinse the sink with clean water. Please do not scatter your grey water near camp or dump it in a latrine. Food scraps will attract animals.
- ❖ If you discover a snake or an animal that is behaving strangely, please notify the camp staff immediately.

What to Bring to Safari Camp



Please label belongings so we can help get them back to you.

Required Documents

- Medical Form
Parts A, B for every participant
- Copy of Family Insurance Card
- Horse Waiver for all Riders

Personal Gear

- Day Pack (carry stuff during the day)
- Water Bottle or Hydration System
- Field Uniform (aka Class A)
(Cub Scout shirt, shorts or pants, belt and socks)
- Activity Uniform (aka Class B)
(Cub Scout T-shirt)
- Rain Jacket or Poncho
- Warm Jacket (fleece or sweater)
- Hat (ball cap and stocking cap)
- Underwear & Socks
- Pajamas
- Scout appropriate T-Shirts
long sleeve & short sleeve
- Long Pants Required for Horseback
Ride (**Jeans Preferred**)
- Pants/Shorts (jeans or Scout pants –
long, short or both)
- Tennis Shoes / Extra Pair is Handy
**(Closed Toed Shoes required for Horseback
Ride – Crocs are not considered closed-toed
shoes.)**
- Toiletries (Soap, Toothbrush &
Toothpaste, Deodorant, Shampoo)
- Washcloth & Towel
- Sunscreen, Chapstick
- Bug Spray
- Flashlight or Head Lamp & Extra
Batteries
- Whistle
- Medications (if applicable)
- Spending Money

Family Equipment

- Tent(s) for Family
- Tarp or ground cover for tents
- Sleeping Bags for each Camper
- Extra blankets in case it's cold
- Sleeping pad, air mattress or cot
- Pillow
- Camp Chair (one per camper)
- Small First-Aid Kit
- Lantern / Flashlight
(For Campsite & Nighttime Activities)
- If you are renting a tent or cabin,
be sure to bring bedding for bed.**

Items Not To Bring

- Electronic Games and devices
- Radios, iPods, etc.
- Matches & Lighters
- Hot Sparks
- Laser Pointers
- Personal archery/shooting sports
equipment
- Any questionable item

Items Not Allowed

- Fireworks
- Alcoholic beverages or illegal drugs
- Flames in tents
- Sheath knives
- Personal firearms
- Projectile items like Wrist rockets
- Pets
- Bicycles

Use or possession of tobacco products by anyone under the age of 21 is illegal in Arizona. All camp buildings are smoke and vaping free. The only authorized location for adult smoking or vaping is in your personal vehicle.

Safari Camp Directions



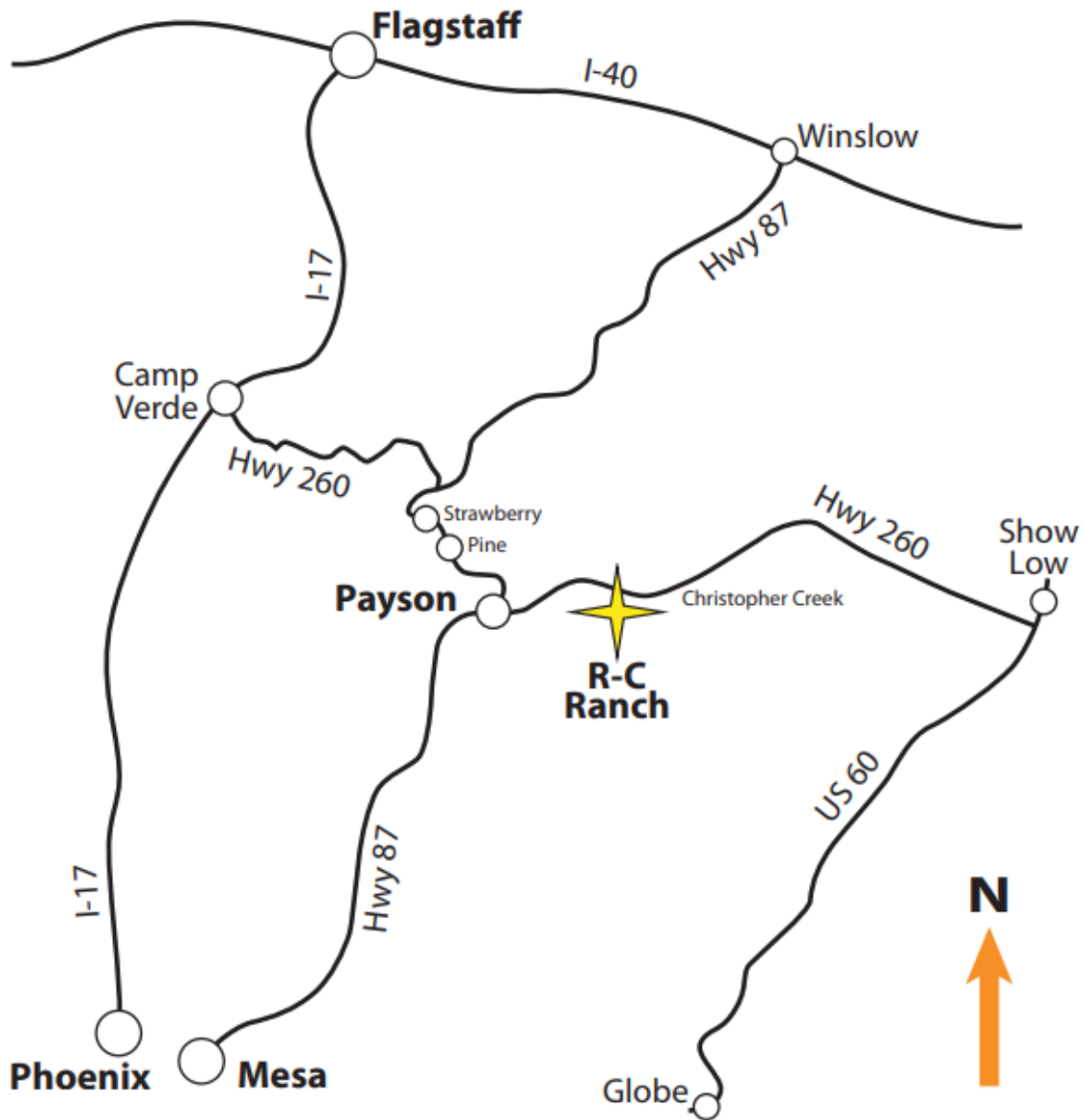
Directions to R-C Scout Ranch

R-C Scout Ranch
19887 E. AZ Hwy 260
Payson, AZ 85541-9215

GPS: Latitude: N 34° 18' 42"
Longitude: W 111° 2' 60"



R-C Scout Ranch is on Highway 260 approximately 19.6 miles east of the intersection of 260 and Highway 87 in Payson, Arizona. The entrance is between mile marker 271 and 272 on the South side of the road. If you get to the small township of Christopher Creek, you've gone too far – approximately two miles past R-C Scout Ranch.



R-C Scout Ranch Map

R-C Scout Ranch Map

19887 E. AZ Hwy 260
Payson, AZ 85541

Revised 8/14/19

